

Data File : VW011326.D  
 Acq On : 18 Jul 2019 00:33  
 Operator : SY/VA  
 Sample : K3863-08  
 Misc : 3.99G/10ML/MSVOA\_W/SOIL  
 ALS Vial : 1 Sample Multiplier: 1

Instrument :  
 MSVOA\_W  
 ClientSampleId :  
 A52H2

Quant Time: Jul 18 06:42:12 2019  
 Quant Method : Z:\VOASRV\HPCHEM1\MSVOA\_W\METHOD\SOM2WLM070219S.M  
 Quant Title : VOC Analysis  
 QLast Update : Thu Jul 18 06:37:55 2019  
 Response via : Initial Calibration

| Internal Standards         | R.T.  | QIon | Response | Conc  | Units | Dev(Min) |
|----------------------------|-------|------|----------|-------|-------|----------|
| 1) 1,4-Difluorobenzene     | 8.84  | 114  | 212869   | 25.00 | ug/L  | 0.00     |
| 28) Chlorobenzene-d5       | 11.63 | 117  | 153948   | 25.00 | ug/L  | 0.00     |
| 60) 1,4-Dichlorobenzene-d4 | 13.56 | 152  | 38637    | 25.00 | ug/L  | 0.00     |

System Monitoring Compounds

|                                |        |       |          |          |      |          |
|--------------------------------|--------|-------|----------|----------|------|----------|
| 4) Vinyl Chloride-d3           | 2.34   | 65    | 50850    | 15.64    | ug/L | 0.00     |
| Spiked Amount                  | 25.000 | Range | 30 - 150 | Recovery | =    | 62.56%   |
| 7) Chloroethane-d5             | 2.88   | 69    | 45364    | 19.89    | ug/L | 0.00     |
| Spiked Amount                  | 25.000 | Range | 30 - 150 | Recovery | =    | 79.56%   |
| 10) 1,1-Dichloroethene-d2      | 4.01   | 63    | 91338    | 13.27    | ug/L | 0.00     |
| Spiked Amount                  | 25.000 | Range | 45 - 110 | Recovery | =    | 53.08%   |
| 20) 2-Butanone-d5              | 7.07   | 46    | 98895    | 77.24    | ug/L | 0.00     |
| Spiked Amount                  | 50.000 | Range | 20 - 135 | Recovery | =    | 154.48%# |
| 24) Chloroform-d               | 7.64   | 84    | 140377   | 24.06    | ug/L | 0.00     |
| Spiked Amount                  | 25.000 | Range | 40 - 150 | Recovery | =    | 96.24%   |
| 26) 1,2-Dichloroethane-d4      | 8.31   | 65    | 98864    | 27.51    | ug/L | 0.00     |
| Spiked Amount                  | 25.000 | Range | 70 - 130 | Recovery | =    | 110.04%  |
| 29) Benzene-d6                 | 8.27   | 84    | 261172   | 27.54    | ug/L | 0.00     |
| Spiked Amount                  | 25.000 | Range | 20 - 135 | Recovery | =    | 110.16%  |
| 33) 1,2-Dichloropropane-d6     | 9.27   | 67    | 97116    | 31.45    | ug/L | 0.00     |
| Spiked Amount                  | 25.000 | Range | 70 - 120 | Recovery | =    | 125.80%# |
| 37) Toluene-d8                 | 10.32  | 98    | 186738   | 22.10    | ug/L | 0.00     |
| Spiked Amount                  | 25.000 | Range | 30 - 130 | Recovery | =    | 88.40%   |
| 38) trans-1,3-Dichloropropene- | 10.57  | 79    | 32771    | 24.95    | ug/L | 0.00     |
| Spiked Amount                  | 25.000 | Range | 30 - 135 | Recovery | =    | 99.80%   |
| 39) 2-Hexanone-d5              | 10.92  | 63    | 61588    | 86.96    | ug/L | 0.00     |
| Spiked Amount                  | 50.000 | Range | 20 - 135 | Recovery | =    | 173.92%# |
| 48) 1,1,2,2-Tetrachloroethane- | 12.69  | 84    | 82562    | 32.32    | ug/L | 0.00     |
| Spiked Amount                  | 25.000 | Range | 45 - 120 | Recovery | =    | 129.28%# |
| 61) 1,2-Dichlorobenzene-d4     | 13.85  | 152   | 33420    | 22.53    | ug/L | 0.00     |
| Spiked Amount                  | 25.000 | Range | 75 - 120 | Recovery | =    | 90.12%   |

Target Compounds

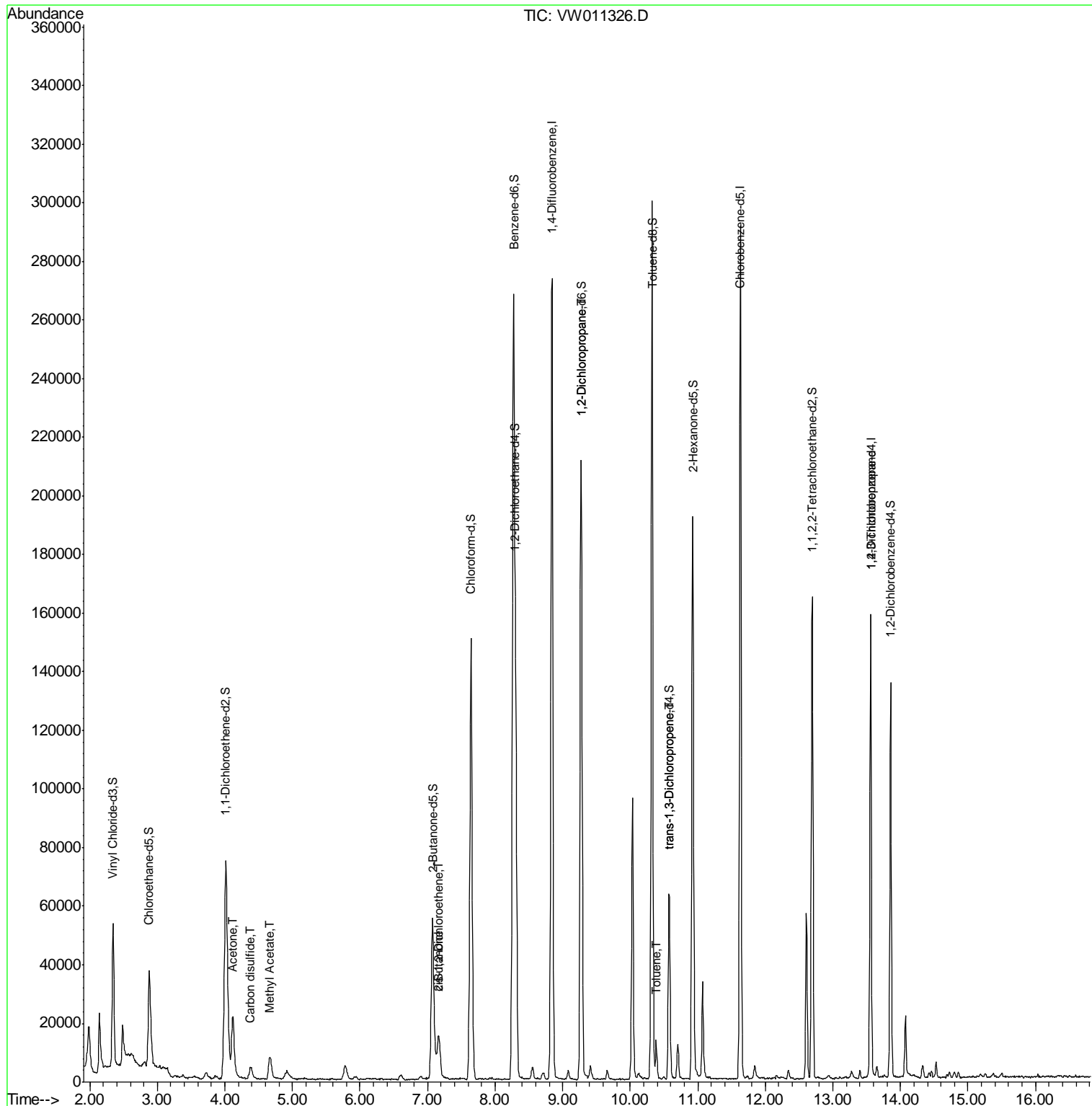
|                               |       |    |       |        | Qvalue    |
|-------------------------------|-------|----|-------|--------|-----------|
| 13) Acetone                   | 4.12  | 43 | 38363 | 30.675 | ug/L 98   |
| 14) Carbon disulfide          | 4.38  | 76 | 6413  | 0.801  | ug/L 99   |
| 15) Methyl Acetate            | 4.67  | 43 | 15766 | 7.747  | ug/L # 78 |
| 21) 2-Butanone                | 7.17  | 43 | 9987  | 6.186  | ug/L 96   |
| 22) cis-1,2-Dichloroethene    | 7.16  | 96 | 2457  | 0.803  | ug/L 94   |
| 40) 1,2-Dichloropropane       | 9.27  | 63 | 11153 | 4.230  | ug/L # 88 |
| 44) Toluene                   | 10.38 | 91 | 8398  | 0.843  | ug/L 96   |
| 45) trans-1,3-Dichloropropene | 10.57 | 75 | 1705  | 0.530  | ug/L 98   |
| 59) 1,2,3-Trichloropropane    | 13.56 | 75 | 5386  | 2.888  | ug/L 90   |

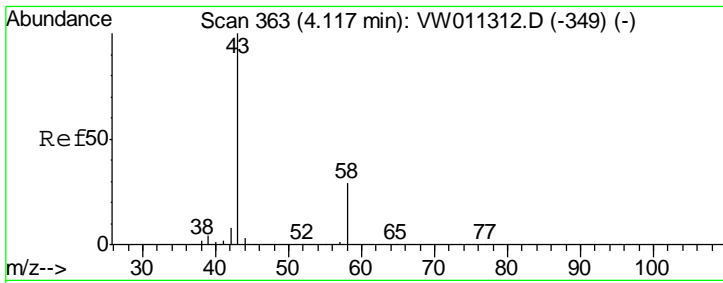
(#) = qualifier out of range (m) = manual integration (+) = signals summed

Data File : VW011326.D  
Acq On : 18 Jul 2019 00:33  
Operator : SY/VA  
Sample : K3863-08  
Misc : 3.99G/10ML/MSVOA\_W/SOIL  
ALS Vial : 1 Sample Multiplier: 1

Instrument :  
MSVOA\_W  
Client Sampled :  
A52H2

Quant Time: Jul 18 06:42:12 2019  
Quant Method : Z:\VOASRV\HPCHEM1\MSVOA\_W\METHOD\SOM2WLM070219S.M  
Quant Title : VOC Analysis  
QLast Update : Thu Jul 18 06:37:55 2019  
Response via : Initial Calibration

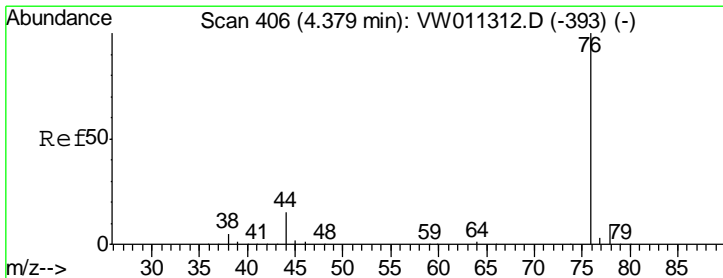
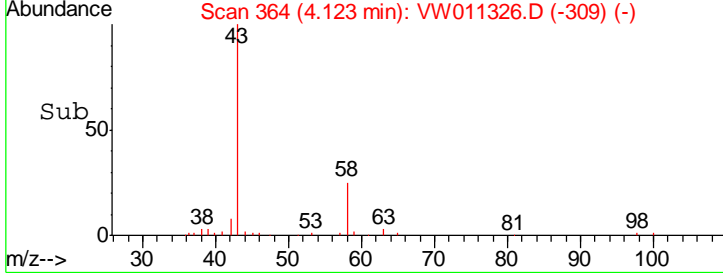
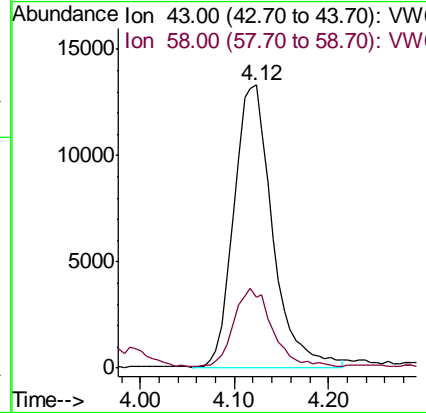
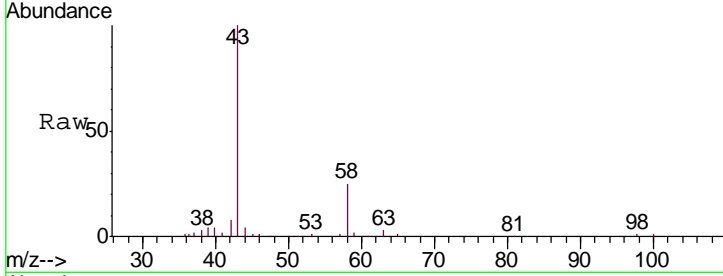




#13  
 Acetone  
 Concen: 30.675 ug/L  
 RT: 4.12 min Scan# 364  
 Delta R.T. 0.01 min  
 Lab File: VW011326.D  
 Acq: 18 Jul 2019 00:33

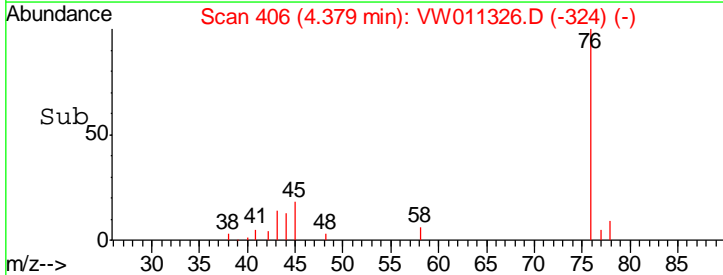
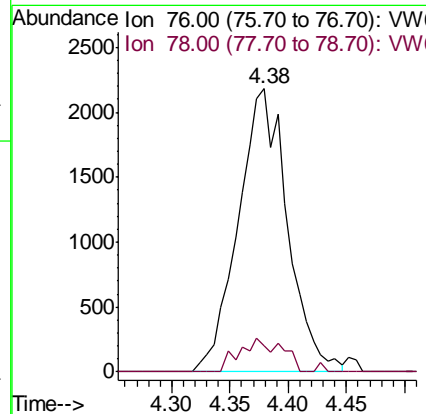
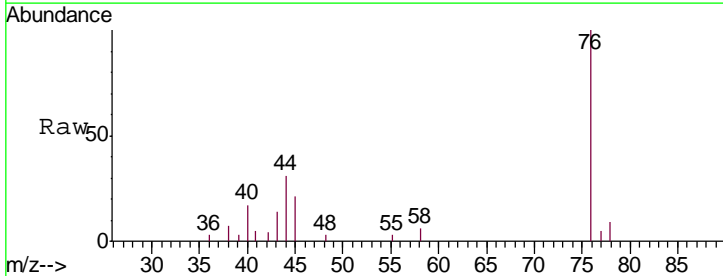
Instrument :  
 MSVOA\_W  
 ClientSampled :  
 A52H2

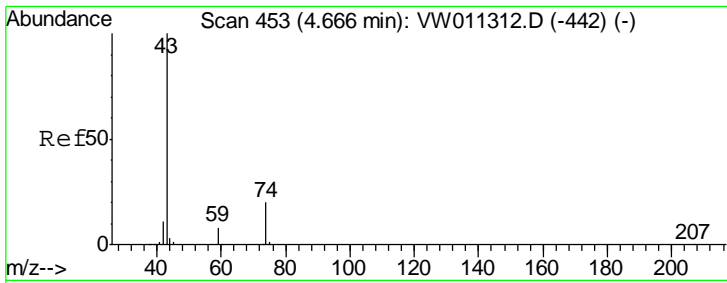
Tgt Ion: 43 Resp: 38363  
 Ion Ratio Lower Upper  
 43 100  
 58 26.2 0.0 55.0



#14  
 Carbon disulfide  
 Concen: 0.801 ug/L  
 RT: 4.38 min Scan# 406  
 Delta R.T. -0.00 min  
 Lab File: VW011326.D  
 Acq: 18 Jul 2019 00:33

Tgt Ion: 76 Resp: 6413  
 Ion Ratio Lower Upper  
 76 100  
 78 9.4 7.3 10.9

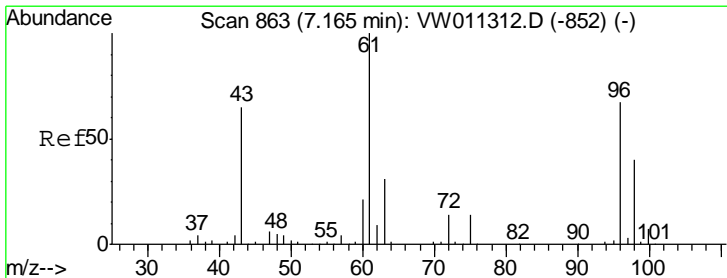
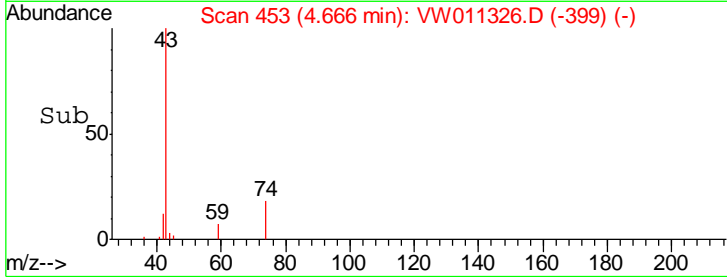
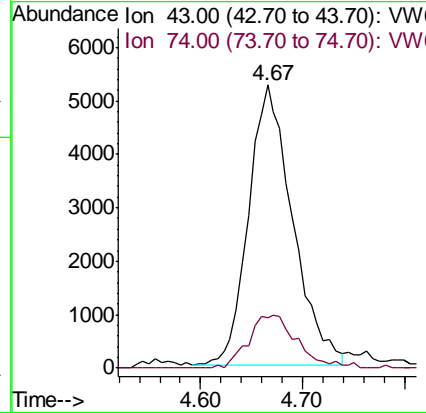
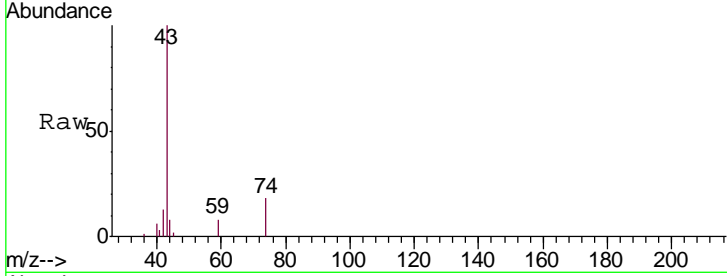




#15  
 Methyl Acetate  
 Concen: 7.747 ug/L  
 RT: 4.67 min Scan# 453  
 Delta R.T. -0.00 min  
 Lab File: VW011326.D  
 Acq: 18 Jul 2019 00:33

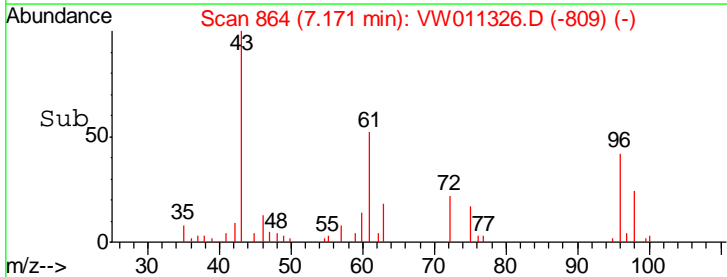
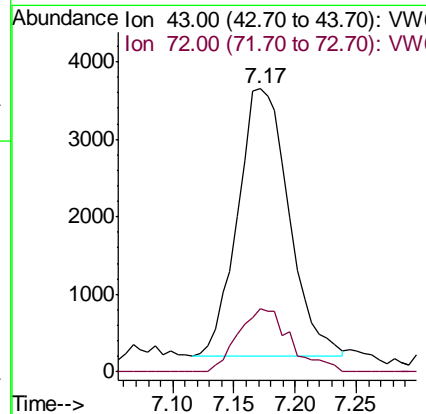
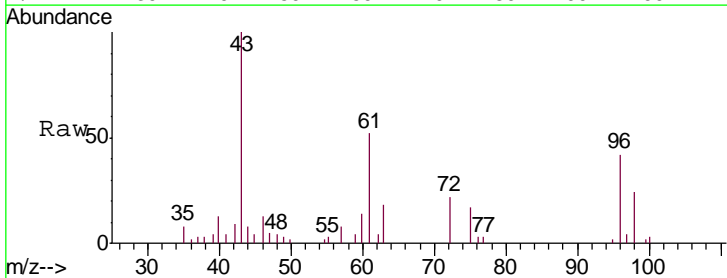
Instrument :  
 MSVOA\_W  
 ClientSampled :  
 A52H2

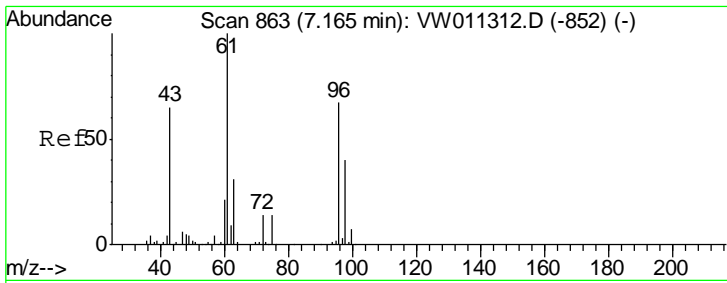
Tgt Ion: 43 Resp: 15766  
 Ion Ratio Lower Upper  
 43 100  
 74 9.2 15.1 22.7#



#21  
 2-Butanone  
 Concen: 6.186 ug/L  
 RT: 7.17 min Scan# 864  
 Delta R.T. 0.01 min  
 Lab File: VW011326.D  
 Acq: 18 Jul 2019 00:33

Tgt Ion: 43 Resp: 9987  
 Ion Ratio Lower Upper  
 43 100  
 72 24.5 11.2 33.6

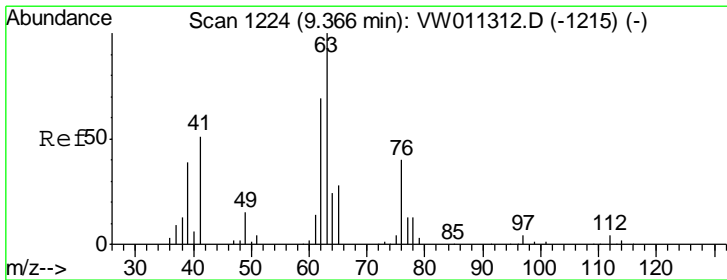
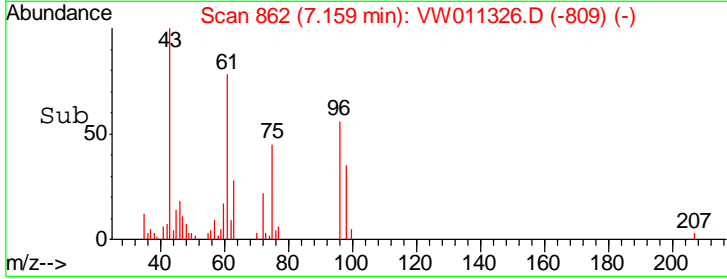
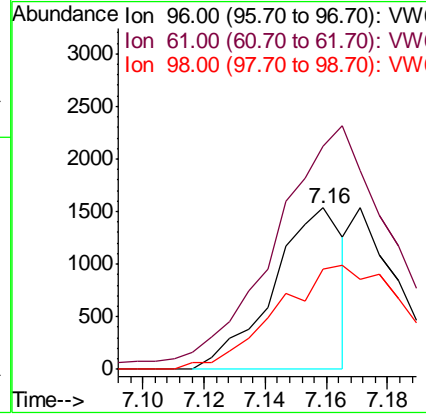
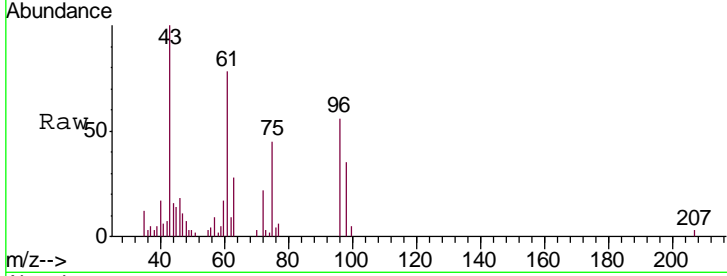




#22  
 cis-1,2-Dichloroethene  
 Concen: 0.803 ug/L  
 RT: 7.16 min Scan# 862  
 Delta R.T. -0.01 min  
 Lab File: VW011326.D  
 Acq: 18 Jul 2019 00:33

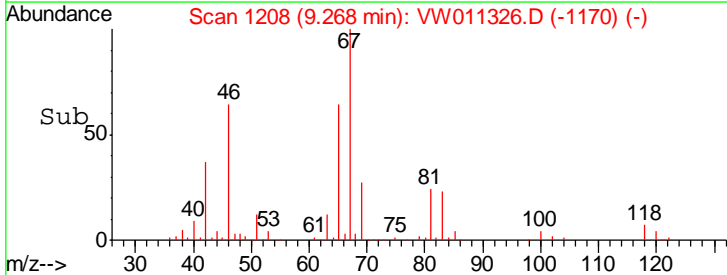
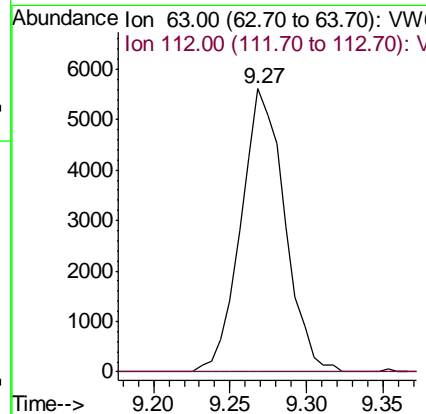
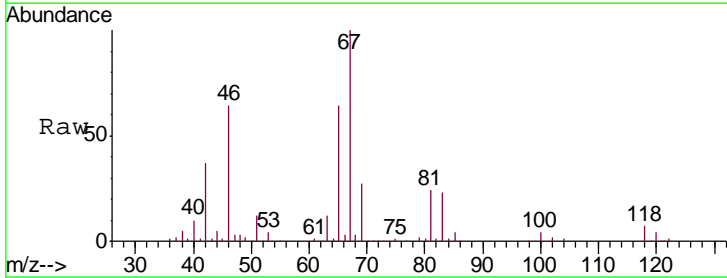
Instrument :  
 MSVOA\_W  
 ClientSampled :  
 A52H2

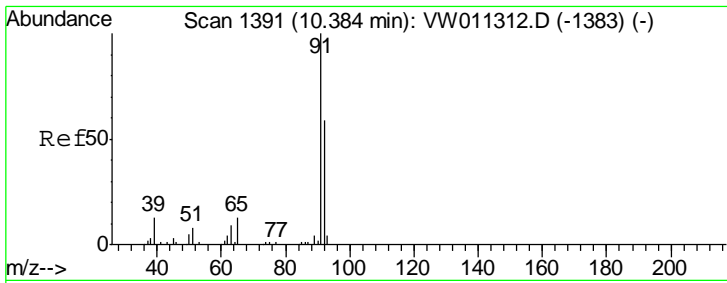
| Tgt Ion | Resp  | Lower | Upper |
|---------|-------|-------|-------|
| 96      | 2457  |       |       |
| 61      | 138.4 | 103.2 | 191.6 |
| 98      | 61.9  | 44.8  | 83.2  |



#40  
 1,2-Dichloropropane  
 Concen: 4.230 ug/L  
 RT: 9.27 min Scan# 1208  
 Delta R.T. -0.10 min  
 Lab File: VW011326.D  
 Acq: 18 Jul 2019 00:33

| Tgt Ion | Resp  | Lower | Upper |
|---------|-------|-------|-------|
| 63      | 11153 |       |       |
| 112     | 0.0   | 3.0   | 4.6#  |

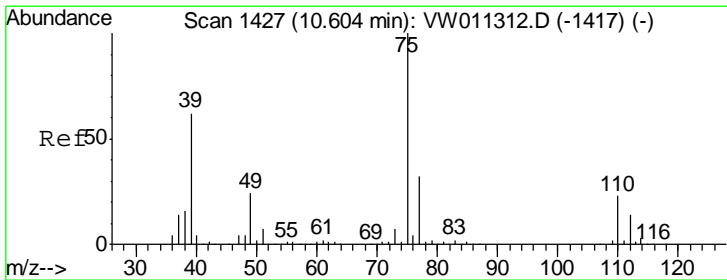
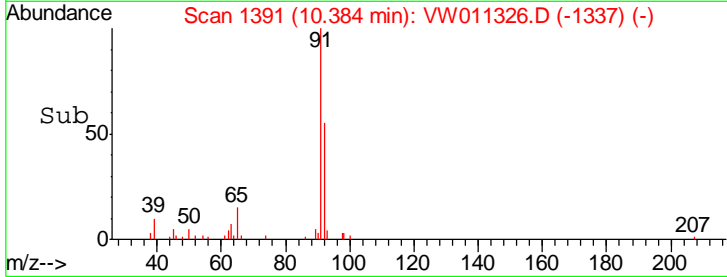
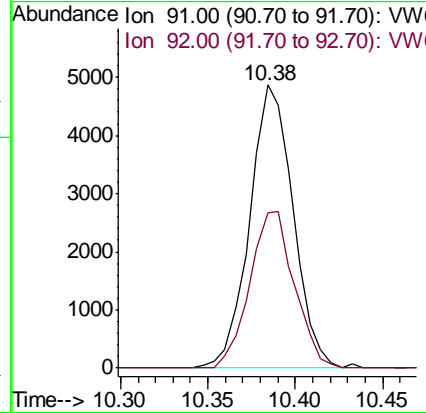
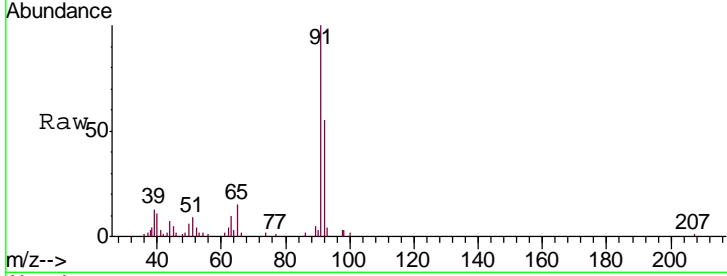




#44  
 Toluene  
 Concen: 0.843 ug/L  
 RT: 10.38 min Scan# 1391  
 Delta R.T. -0.00 min  
 Lab File: VW011326.D  
 Acq: 18 Jul 2019 00:33

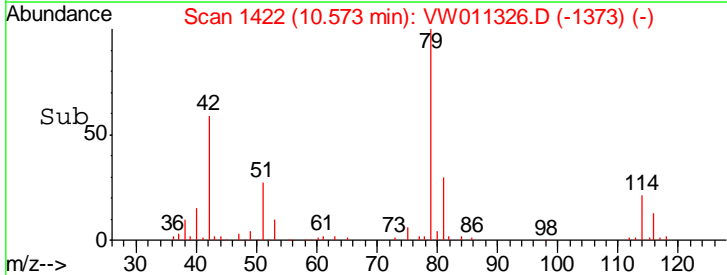
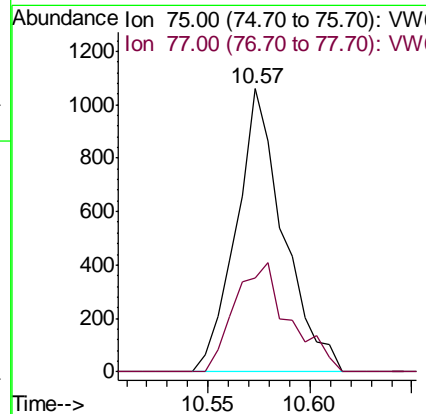
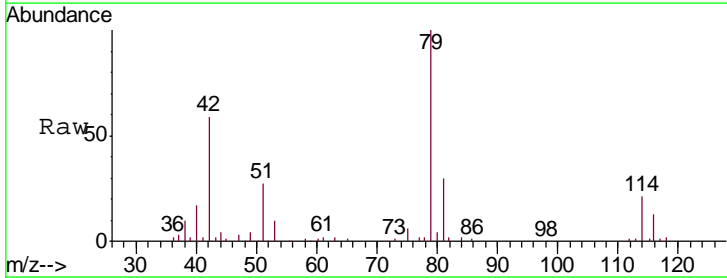
Instrument :  
 MSVOA\_W  
 ClientSampled :  
 A52H2

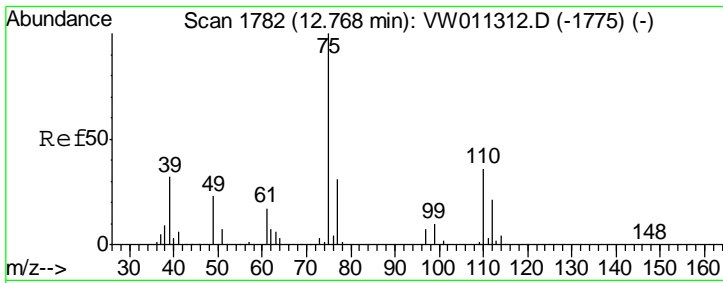
Tgt Ion: 91 Resp: 8398  
 Ion Ratio Lower Upper  
 91 100  
 92 55.0 40.8 75.8



#45  
 trans-1,3-Dichloropropene  
 Concen: 0.530 ug/L  
 RT: 10.57 min Scan# 1422  
 Delta R.T. -0.03 min  
 Lab File: VW011326.D  
 Acq: 18 Jul 2019 00:33

Tgt Ion: 75 Resp: 1705  
 Ion Ratio Lower Upper  
 75 100  
 77 33.1 22.3 41.5





#59  
 1,2,3-Trichloropropane  
 Concen: 2.888 ug/L  
 RT: 13.56 min Scan# 1912  
 Delta R.T. 0.79 min  
 Lab File: VW011326.D  
 Acq: 18 Jul 2019 00:33

Instrument :  
 MSVOA\_W  
 ClientSampled :  
 A52H2

Tgt Ion: 75 Resp: 5386  
 Ion Ratio Lower Upper  
 75 100  
 77 37.5 25.4 38.0

