

Data Path : Z:\VOASRV\HPCHEM1\MSVOA W\DATA\VW071719\
 Data File : VW011307.D
 Acq On : 17 Jul 2019 14:28
 Operator : SY/VA
 Sample : K3755-10
 Misc : 5.38G/10ML/MSVOA W/SOIL
 ALS Vial : 1 Sample Multiplier: 1

Instrument :
 MSVOA_W
 ClientSampleId :
 DB915

Quant Time: Jul 18 05:55:08 2019
 Quant Method : Z:\VOASRV\HPCHEM1\MSVOA_W\METHOD\SOM2WLM070219S.M
 Quant Title : VOC Analysis
 QLast Update : Thu Jul 18 04:56:38 2019
 Response via : Initial Calibration

Internal Standards	R.T.	QIon	Response	Conc	Units	Dev(Min)
1) 1,4-Difluorobenzene	8.84	114	319985	25.00	ug/L	0.00
28) Chlorobenzene-d5	11.63	117	290867	25.00	ug/L	0.00
60) 1,4-Dichlorobenzene-d4	13.56	152	133215	25.00	ug/L	0.00

System Monitoring Compounds

4) Vinyl Chloride-d3	2.34	65	57951	11.86	ug/L	0.00
Spiked Amount	25.000	Range	30 - 150	Recovery	=	47.44%
7) Chloroethane-d5	2.88	69	50436	14.71	ug/L	0.00
Spiked Amount	25.000	Range	30 - 150	Recovery	=	58.84%
10) 1,1-Dichloroethene-d2	4.01	63	116675	11.28	ug/L	0.00
Spiked Amount	25.000	Range	45 - 110	Recovery	=	45.12%
20) 2-Butanone-d5	7.07	46	68525	35.60	ug/L	0.00
Spiked Amount	50.000	Range	20 - 135	Recovery	=	71.20%
24) Chloroform-d	7.65	84	167620	19.11	ug/L	0.00
Spiked Amount	25.000	Range	40 - 150	Recovery	=	76.44%
26) 1,2-Dichloroethane-d4	8.31	65	104030	19.26	ug/L	0.00
Spiked Amount	25.000	Range	70 - 130	Recovery	=	77.04%
29) Benzene-d6	8.27	84	331726	18.51	ug/L	0.00
Spiked Amount	25.000	Range	20 - 135	Recovery	=	74.04%
33) 1,2-Dichloropropane-d6	9.27	67	115310	19.76	ug/L	0.00
Spiked Amount	25.000	Range	70 - 120	Recovery	=	79.04%
37) Toluene-d8	10.32	98	283731	17.77	ug/L	0.00
Spiked Amount	25.000	Range	30 - 130	Recovery	=	71.08%
38) trans-1,3-Dichloropropene-	10.58	79	40331	16.25	ug/L	0.00
Spiked Amount	25.000	Range	30 - 135	Recovery	=	65.00%
39) 2-Hexanone-d5	10.93	63	43073	32.19	ug/L	0.00
Spiked Amount	50.000	Range	20 - 135	Recovery	=	64.38%
48) 1,1,2,2-Tetrachloroethane-	12.69	84	91336	18.92	ug/L	0.00
Spiked Amount	25.000	Range	45 - 120	Recovery	=	75.68%
61) 1,2-Dichlorobenzene-d4	13.85	152	103796	20.30	ug/L	0.00
Spiked Amount	25.000	Range	75 - 120	Recovery	=	81.20%

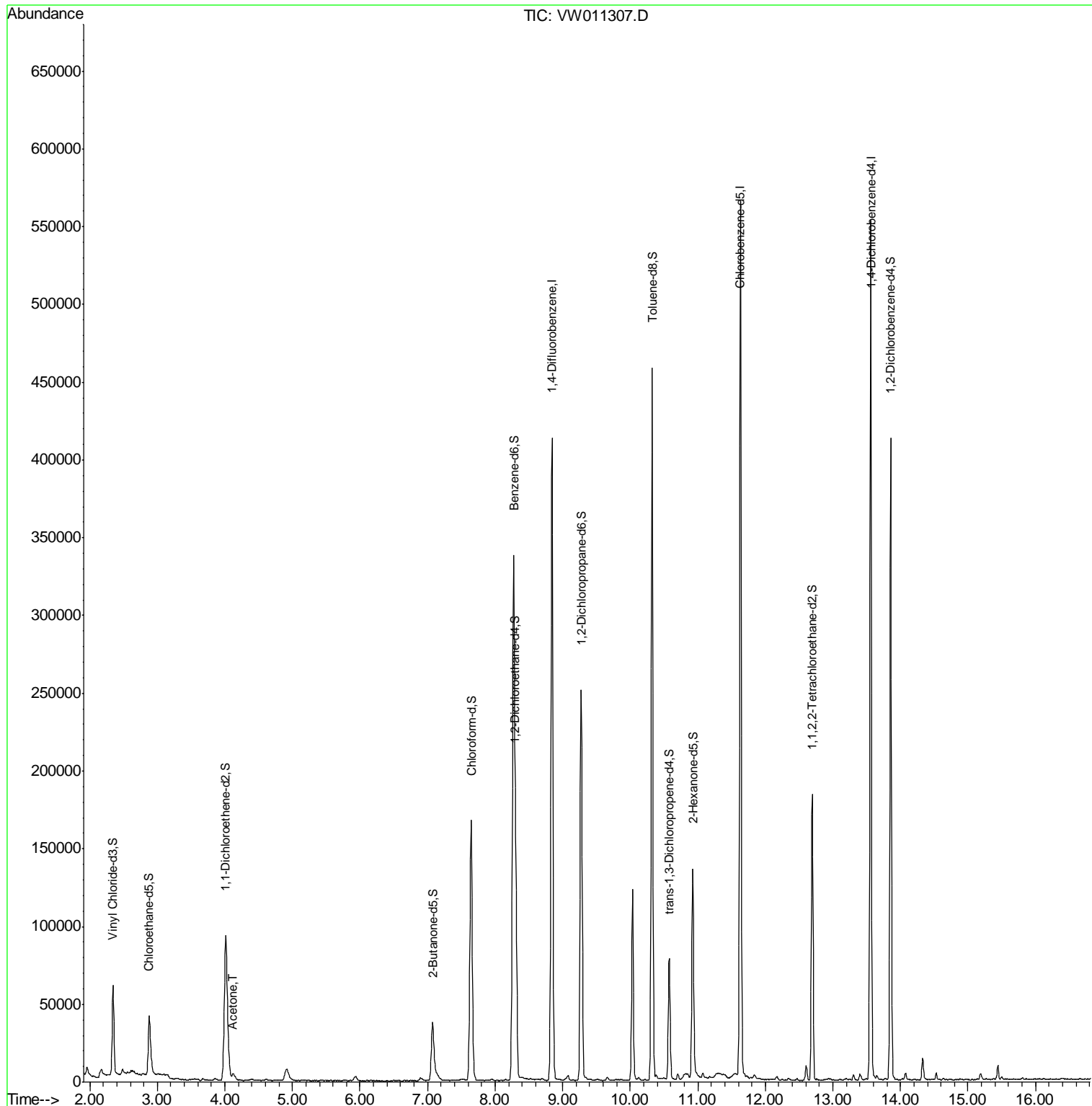
Target Compounds					Ovalue
13) Acetone	4.12	43	6319	3.361 ug/L	70

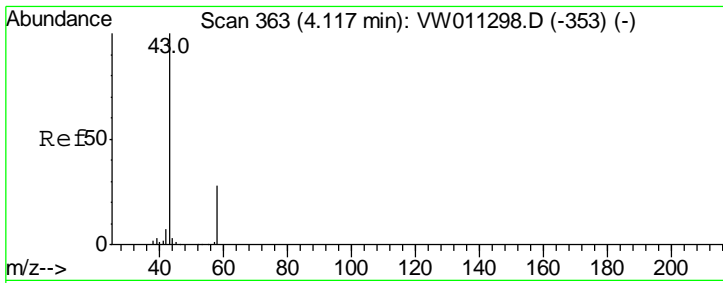
(#) = qualifier out of range (m) = manual integration (+) = signals summed

Data Path : Z:\VOASRV\HPCHEM1\MSVOA W\DATA\VW071719\
 Data File : VW011307.D
 Acq On : 17 Jul 2019 14:28
 Operator : SY/VA
 Sample : K3755-10
 Misc : 5.38G/10ML/MSVOA W/SOIL
 ALS Vial : 1 Sample Multiplier: 1

Instrument :
 MSVOA_W
 ClientSampleID :
 DB915

Quant Time: Jul 18 05:55:08 2019
 Quant Method : Z:\VOASRV\HPCHEM1\MSVOA_W\METHOD\SOM2WLM070219S.M
 Quant Title : VOC Analysis
 QLast Update : Thu Jul 18 04:56:38 2019
 Response via : Initial Calibration





#13
 Acetone
 Concen: 3.361 ug/L
 RT: 4.12 min Scan# 363
 Delta R.T. -0.00 min
 Lab File: VW011307.D
 Acq: 17 Jul 2019 14:28

Instrument : MSVOA_W
 ClientSampled : DB915

Tot Ion: 43 Resp: 6319

Ion	Ratio	Lower	Upper
43	100		
58	11.6	0.0	55.0

