

Data Path : Z:\voasrv\HPCHEM1\MSVOA\_W\Data\VW071922\  
 Data File : VW023897.D  
 Acq On : 19 Jul 2022 21:17  
 Operator : SY/VA  
 Sample : N3743-01  
 Misc : 5.96g/10mL/MSVOA\_W/SOIL  
 ALS Vial : 1 Sample Multiplier: 1

Instrument :  
 MSVOA\_W  
 ClientSampleId :

Quant Time: Jul 20 03:00:32 2022  
 Quant Method : Z:\voasrv\HPCHEM1\MSVOA\_W\Method\SFAMWLM071322SMA.M  
 Quant Title : SFAM01.0  
 QLast Update : Wed Jul 20 02:42:08 2022  
 Response via : Initial Calibration

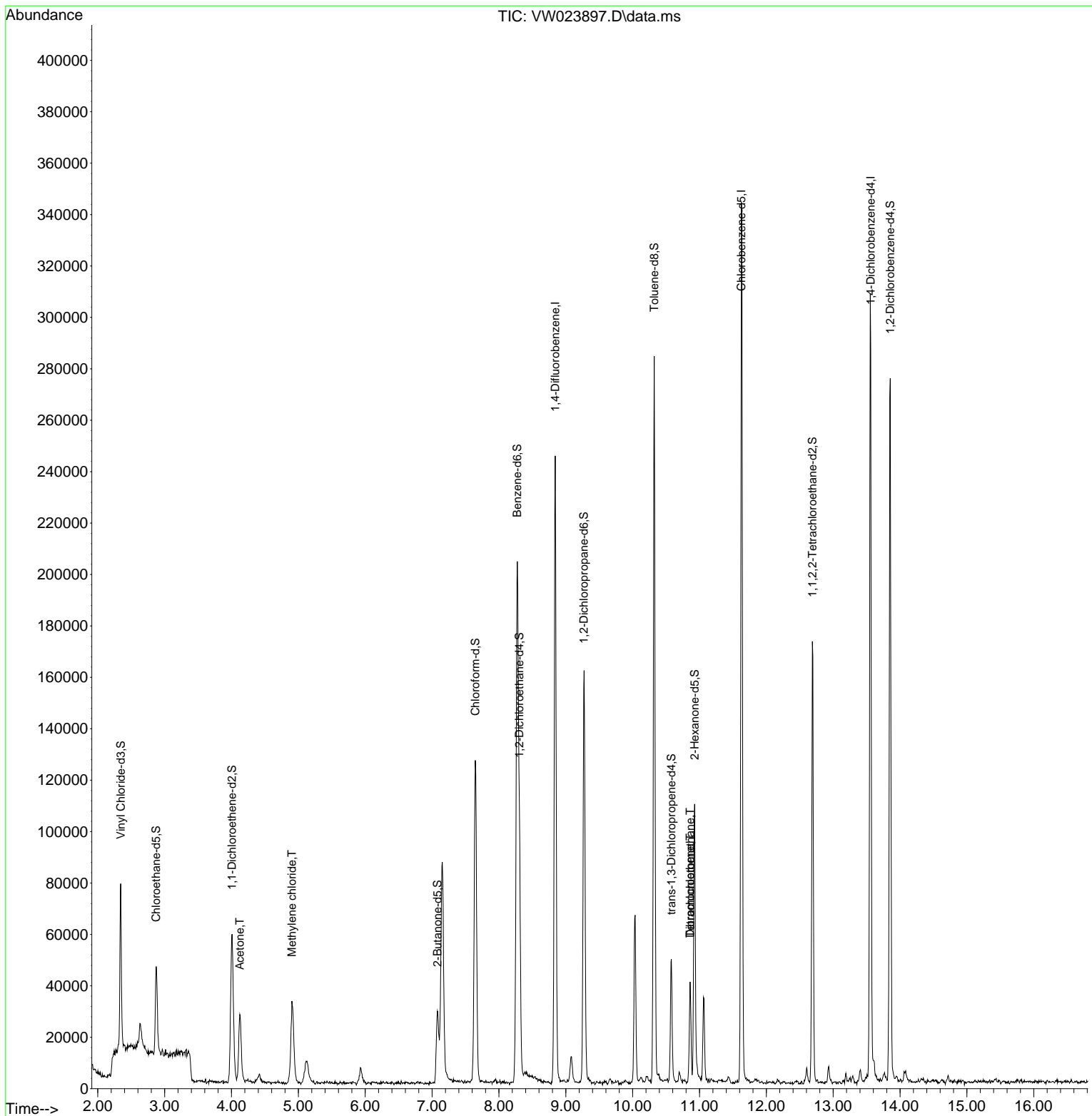
| Compound                      | R.T.   | QIon           | Response   | Conc     | Units  | Dev(Min) |
|-------------------------------|--------|----------------|------------|----------|--------|----------|
| Internal Standards            |        |                |            |          |        |          |
| 1) 1,4-Difluorobenzene        | 8.842  | 114            | 193720     | 25.000   | ug/L   | 0.00     |
| 28) Chlorobenzene-d5          | 11.628 | 117            | 186204     | 25.000   | ug/L   | 0.00     |
| 58) 1,4-Dichlorobenzene-d4    | 13.560 | 152            | 76819      | 25.000   | ug/L   | 0.00     |
| System Monitoring Compounds   |        |                |            |          |        |          |
| 4) Vinyl Chloride-d3          | 2.343  | 65             | 58531      | 11.830   | ug/L   | 0.00     |
| Spiked Amount                 | 25.000 | Range 30 - 150 | Recovery = | 47.320%  |        |          |
| 7) Chloroethane-d5            | 2.873  | 69             | 37214      | 11.274   | ug/L   | 0.00     |
| Spiked Amount                 | 25.000 | Range 30 - 150 | Recovery = | 45.080%  |        |          |
| 11) 1,1-Dichloroethene-d2     | 4.007  | 63             | 54233      | 13.461   | ug/L   | 0.00     |
| Spiked Amount                 | 25.000 | Range 45 - 110 | Recovery = | 53.840%  |        |          |
| 21) 2-Butanone-d5             | 7.080  | 46             | 44614      | 58.133   | ug/L   | 0.00     |
| Spiked Amount                 | 50.000 | Range 20 - 135 | Recovery = | 116.260% |        |          |
| 24) Chloroform-d              | 7.647  | 84             | 125021     | 22.166   | ug/L   | 0.00     |
| Spiked Amount                 | 25.000 | Range 40 - 150 | Recovery = | 88.680%  |        |          |
| 26) 1,2-Dichloroethane-d4     | 8.305  | 65             | 71157      | 20.628   | ug/L   | 0.00     |
| Spiked Amount                 | 25.000 | Range 70 - 130 | Recovery = | 82.520%  |        |          |
| 32) Benzene-d6                | 8.275  | 84             | 204769     | 21.155   | ug/L   | 0.00     |
| Spiked Amount                 | 25.000 | Range 20 - 135 | Recovery = | 84.600%  |        |          |
| 36) 1,2-Dichloropropane-d6    | 9.268  | 67             | 70014      | 24.013   | ug/L   | 0.00     |
| Spiked Amount                 | 25.000 | Range 70 - 120 | Recovery = | 96.040%  |        |          |
| 41) Toluene-d8                | 10.323 | 98             | 177834     | 18.113   | ug/L   | 0.00     |
| Spiked Amount                 | 25.000 | Range 30 - 130 | Recovery = | 72.440%  |        |          |
| 43) trans-1,3-Dichloroprop... | 10.579 | 79             | 25398      | 18.584   | ug/L   | 0.00     |
| Spiked Amount                 | 25.000 | Range 30 - 135 | Recovery = | 74.320%  |        |          |
| 47) 2-Hexanone-d5             | 10.927 | 63             | 33268      | 54.262   | ug/L   | 0.00     |
| Spiked Amount                 | 50.000 | Range 20 - 135 | Recovery = | 108.520% |        |          |
| 56) 1,1,2,2-Tetrachloroeth... | 12.689 | 84             | 80713      | 25.050   | ug/L   | 0.00     |
| Spiked Amount                 | 25.000 | Range 45 - 120 | Recovery = | 100.200% |        |          |
| 66) 1,2-Dichlorobenzene-d4    | 13.853 | 152            | 66976      | 24.424   | ug/L   | 0.00     |
| Spiked Amount                 | 25.000 | Range 75 - 120 | Recovery = | 97.680%  |        |          |
| Target Compounds              |        |                |            |          |        |          |
| 13) Acetone                   | 4.123  | 43             | 43846      | 80.808   | ug/L   | 99       |
| 16) Methylene chloride        | 4.903  | 84             | 24099      | 7.956    | ug/L   | 89       |
| 46) Tetrachloroethene         | 10.860 | 164            | 7397       | 3.424    | ug/L   | 92       |
| 49) Dibromochloromethane      | 10.860 | 129            | 7021       | 2.610    | ug/L # | 11       |

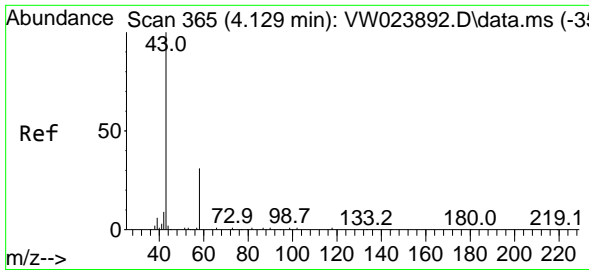
(#) = qualifier out of range (m) = manual integration (+) = signals summed

Data Path : Z:\voasrv\HPCHEM1\MSVOA\_W\Data\VW071922\  
 Data File : VW023897.D  
 Acq On : 19 Jul 2022 21:17  
 Operator : SY/VA  
 Sample : N3743-01  
 Misc : 5.96g/10mL/MSVOA\_W/SOIL  
 ALS Vial : 1 Sample Multiplier: 1

Instrument :  
 MSVOA\_W  
 ClientSampleId :

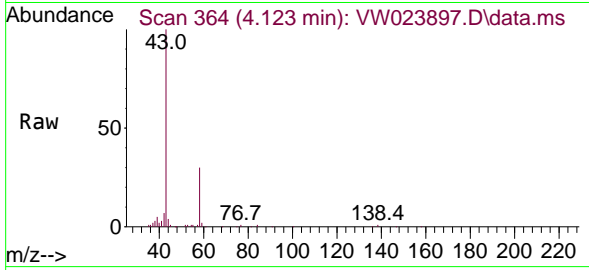
Quant Time: Jul 20 03:00:32 2022  
 Quant Method : Z:\voasrv\HPCHEM1\MSVOA\_W\Method\SFAMWLM071322SMA.M  
 Quant Title : SFAM01.0  
 QLast Update : Wed Jul 20 02:42:08 2022  
 Response via : Initial Calibration



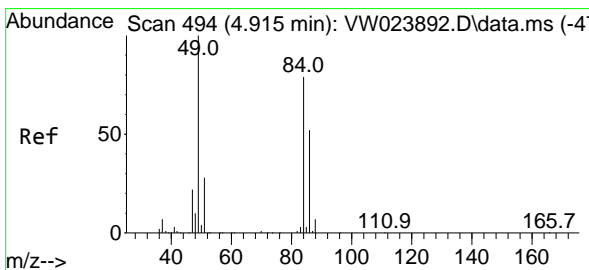
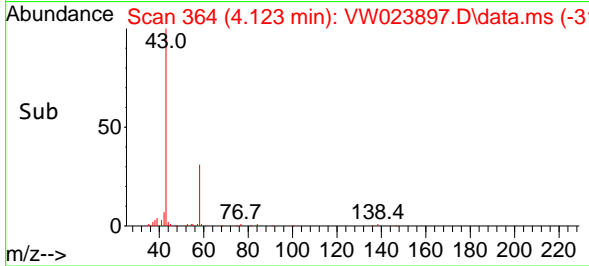
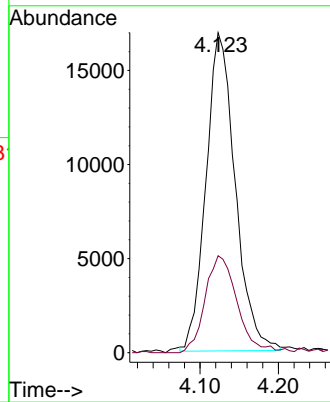


#13  
 Acetone  
 Concen: 80.808 ug/L  
 RT: 4.123 min Scan# 364  
 Delta R.T. -0.006 min  
 Lab File: VW023897.D  
 Acq: 19 Jul 2022 21:17

Instrument : MSVOA\_W  
 ClientSampleId :

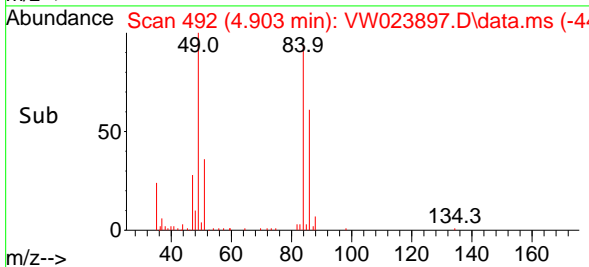
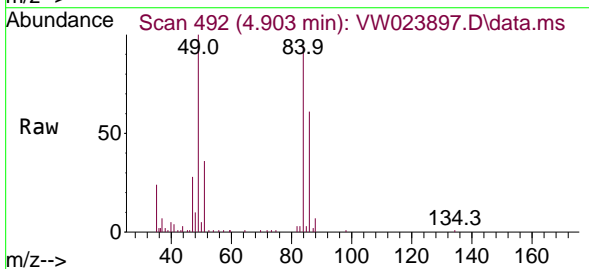
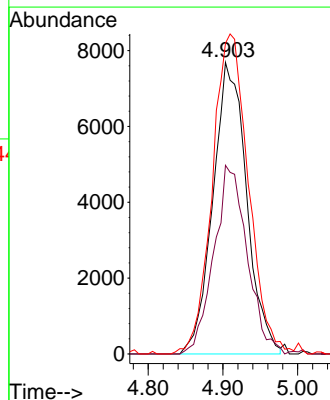


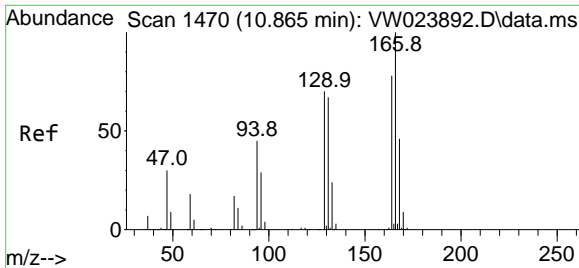
Tgt Ion: 43 Resp: 43846  
 Ion Ratio Lower Upper  
 43 100  
 58 32.7 0.0 64.2



#16  
 Methylene chloride  
 Concen: 7.956 ug/L  
 RT: 4.903 min Scan# 492  
 Delta R.T. -0.012 min  
 Lab File: VW023897.D  
 Acq: 19 Jul 2022 21:17

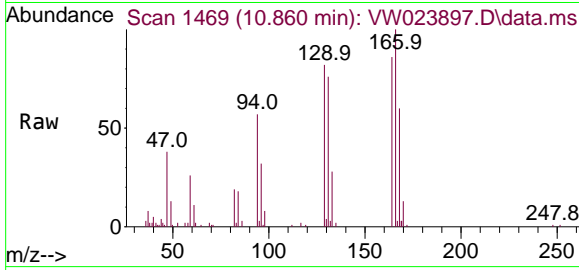
Tgt Ion: 84 Resp: 24099  
 Ion Ratio Lower Upper  
 84 100  
 86 64.7 42.8 79.6  
 49 106.6 85.4 158.6





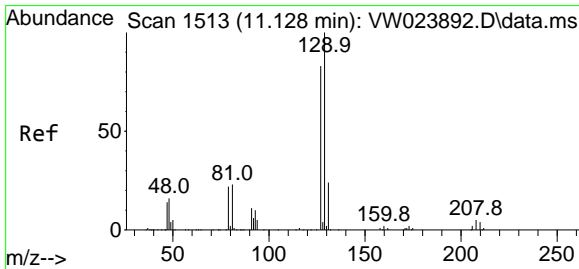
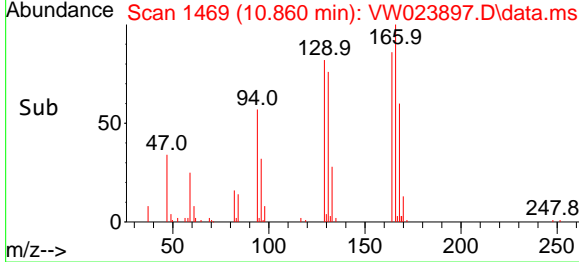
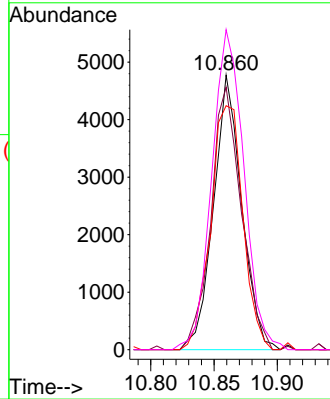
#46  
 Tetrachloroethene  
 Concen: 3.424 ug/L  
 RT: 10.860 min Scan# 1469  
 Delta R.T. -0.006 min  
 Lab File: VW023897.D  
 Acq: 19 Jul 2022 21:17

Instrument : MSVOA\_W  
 ClientSampleId :



Tgt Ion:164 Resp: 7397

| Ion | Ratio | Lower | Upper |
|-----|-------|-------|-------|
| 164 | 100   |       |       |
| 129 | 95.5  | 72.4  | 134.5 |
| 131 | 88.9  | 67.8  | 125.8 |
| 166 | 116.5 | 88.9  | 165.1 |



#49  
 Dibromochloromethane  
 Concen: 2.610 ug/L  
 RT: 10.860 min Scan# 1469  
 Delta R.T. -0.268 min  
 Lab File: VW023897.D  
 Acq: 19 Jul 2022 21:17

Tgt Ion:129 Resp: 7021

| Ion | Ratio | Lower | Upper |
|-----|-------|-------|-------|
| 129 | 100   |       |       |
| 127 | 0.0   | 53.7  | 99.7# |

