

Data Path : Z:\voasrv\HPCHEM1\MSVOA_W\Data\VW071922\
 Data File : VW023903.D
 Acq On : 19 Jul 2022 23:44
 Operator : SY/VA
 Sample : N3743-07
 Misc : 5.75g/10mL/MSVOA_W/SOIL
 ALS Vial : 1 Sample Multiplier: 1

Instrument :
 MSVOA_W
 ClientSampleId :
 F5C94

Quant Time: Jul 20 03:01:40 2022
 Quant Method : Z:\voasrv\HPCHEM1\MSVOA_W\Method\SFAMWLM071322SMA.M
 Quant Title : SFAM01.0
 QLast Update : Wed Jul 20 02:42:08 2022
 Response via : Initial Calibration

Compound	R.T.	QIon	Response	Conc	Units	Dev(Min)

Internal Standards						
1) 1,4-Difluorobenzene	8.842	114	318492	25.000	ug/L	0.00
28) Chlorobenzene-d5	11.628	117	296540	25.000	ug/L	0.00
58) 1,4-Dichlorobenzene-d4	13.554	152	119529	25.000	ug/L	0.00
System Monitoring Compounds						
4) Vinyl Chloride-d3	2.343	65	92580	11.381	ug/L	0.00
Spiked Amount	25.000	Range 30 - 150	Recovery =	45.520%		
7) Chloroethane-d5	2.879	69	68707	12.661	ug/L	0.00
Spiked Amount	25.000	Range 30 - 150	Recovery =	50.640%		
11) 1,1-Dichloroethene-d2	4.013	63	84257	12.720	ug/L	0.00
Spiked Amount	25.000	Range 45 - 110	Recovery =	50.880%		
21) 2-Butanone-d5	6.958	46	144	0.114	ug/L	-0.12
Spiked Amount	50.000	Range 20 - 135	Recovery =	0.220%#		
24) Chloroform-d	7.647	84	212109	22.874	ug/L	0.00
Spiked Amount	25.000	Range 40 - 150	Recovery =	91.480%		
26) 1,2-Dichloroethane-d4	8.305	65	120636	21.271	ug/L	0.00
Spiked Amount	25.000	Range 70 - 130	Recovery =	85.080%		
32) Benzene-d6	8.275	84	358292	23.243	ug/L	0.00
Spiked Amount	25.000	Range 20 - 135	Recovery =	92.960%		
36) 1,2-Dichloropropane-d6	9.275	67	125674	27.066	ug/L	0.00
Spiked Amount	25.000	Range 70 - 120	Recovery =	108.280%		
41) Toluene-d8	10.323	98	323901	20.715	ug/L	0.00
Spiked Amount	25.000	Range 30 - 130	Recovery =	82.880%		
43) trans-1,3-Dichloroprop...	10.573	79	44695	20.535	ug/L	0.00
Spiked Amount	25.000	Range 30 - 135	Recovery =	82.160%		
47) 2-Hexanone-d5	10.927	63	60422	61.883	ug/L	0.00
Spiked Amount	50.000	Range 20 - 135	Recovery =	123.760%		
56) 1,1,2,2-Tetrachloroeth...	12.689	84	129949	25.324	ug/L	0.00
Spiked Amount	25.000	Range 45 - 120	Recovery =	101.280%		
66) 1,2-Dichlorobenzene-d4	13.853	152	117168	27.460	ug/L	0.00
Spiked Amount	25.000	Range 75 - 120	Recovery =	109.840%		

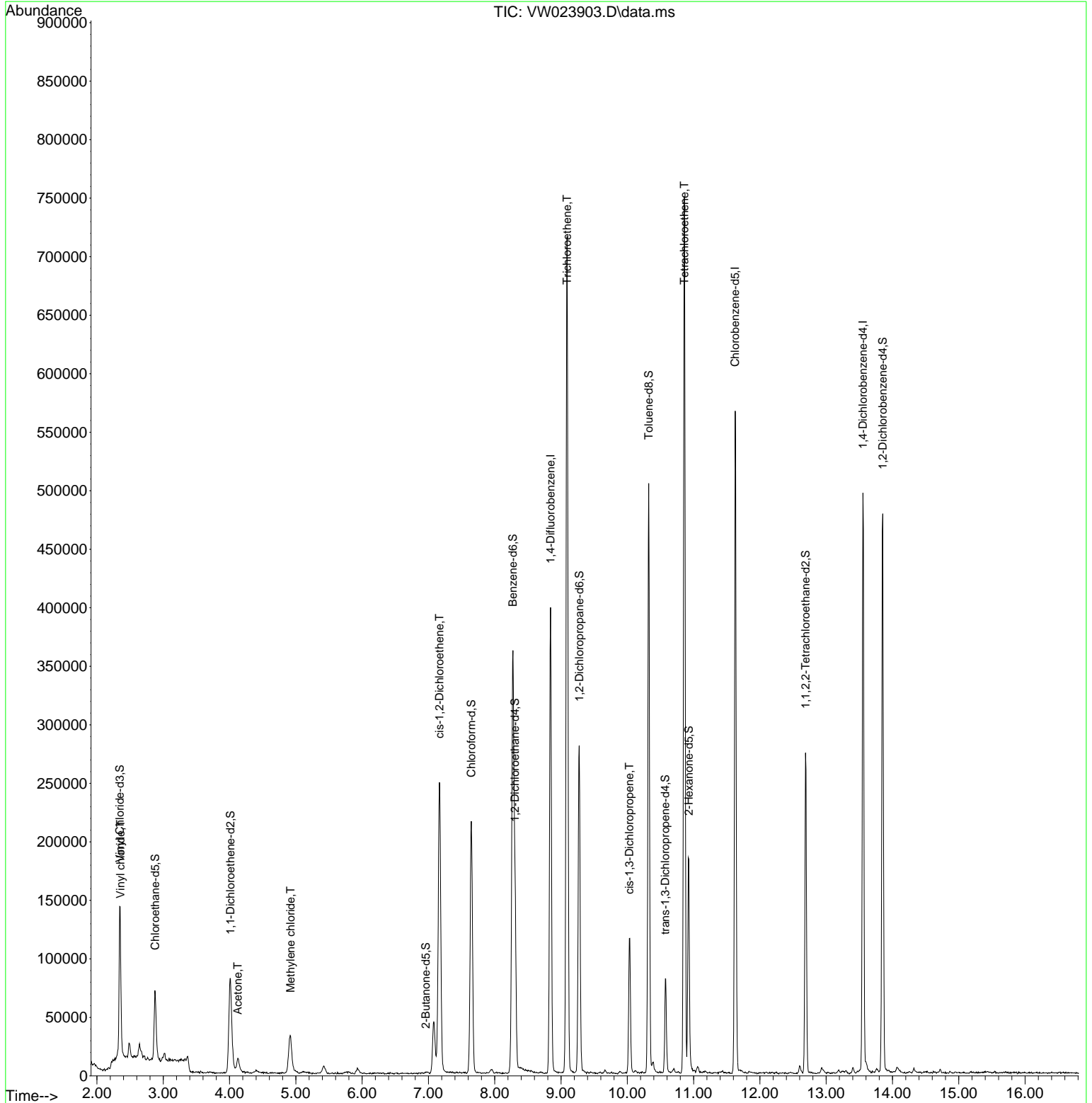
Target Compounds						Qvalue
5) Vinyl chloride	2.355	62	56082	6.162	ug/L	98
13) Acetone	4.123	43	19180	21.500	ug/L	97
16) Methylene chloride	4.922	84	26696	5.360	ug/L	88
20) cis-1,2-Dichloroethene	7.165	96	144183	31.772	ug/L #	95
34) Trichloroethene	9.092	95	242449	54.484	ug/L	95
39) cis-1,3-Dichloropropene	10.030	75	3557	0.559	ug/L #	79
46) Tetrachloroethene	10.860	164	150956	43.872	ug/L	96

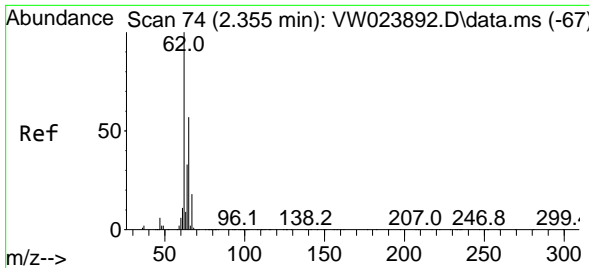
(#) = qualifier out of range (m) = manual integration (+) = signals summed

Data Path : Z:\voasrv\HPCHEM1\MSVOA_W\Data\VW071922\
 Data File : VW023903.D
 Acq On : 19 Jul 2022 23:44
 Operator : SY/VA
 Sample : N3743-07
 Misc : 5.75g/10mL/MSVOA_W/SOIL
 ALS Vial : 1 Sample Multiplier: 1

Instrument :
 MSVOA_W
 ClientSampleId :
 F5C94

Quant Time: Jul 20 03:01:40 2022
 Quant Method : Z:\voasrv\HPCHEM1\MSVOA_W\Method\SFAMWLM071322SMA.M
 Quant Title : SFAM01.0
 QLast Update : Wed Jul 20 02:42:08 2022
 Response via : Initial Calibration

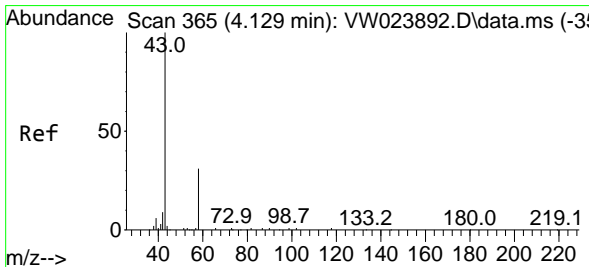
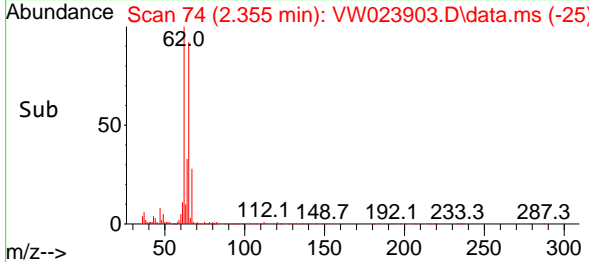
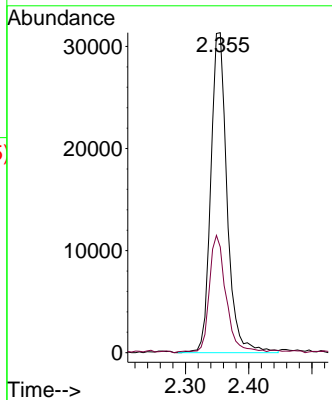
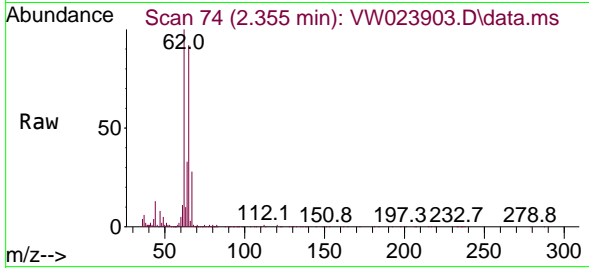




#5
 Vinyl chloride
 Concen: 6.162 ug/L
 RT: 2.355 min Scan# 74
 Delta R.T. 0.000 min
 Lab File: VW023903.D
 Acq: 19 Jul 2022 23:44

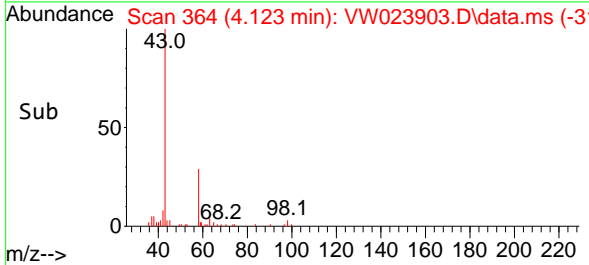
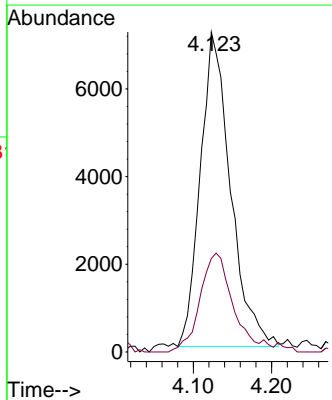
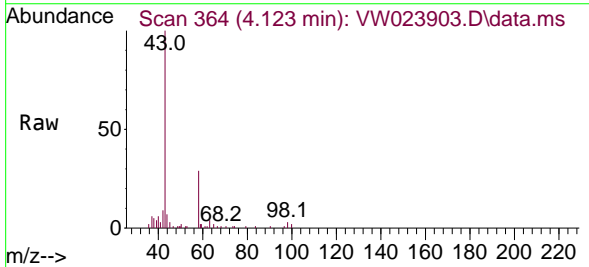
Instrument : MSVOA_W
 ClientSampleId : F5C94

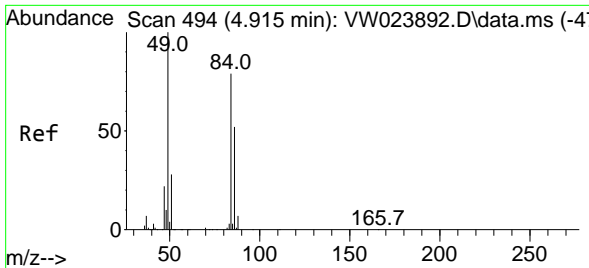
Tgt Ion: 62 Resp: 56082
 Ion Ratio Lower Upper
 62 100
 64 33.0 24.0 44.6



#13
 Acetone
 Concen: 21.500 ug/L
 RT: 4.123 min Scan# 364
 Delta R.T. -0.006 min
 Lab File: VW023903.D
 Acq: 19 Jul 2022 23:44

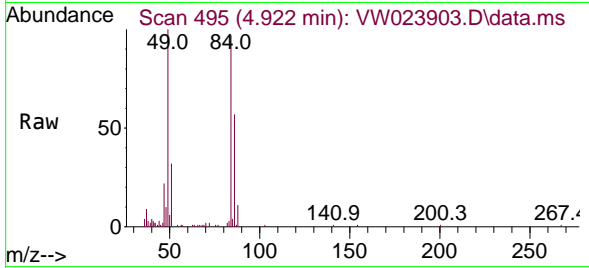
Tgt Ion: 43 Resp: 19180
 Ion Ratio Lower Upper
 43 100
 58 33.7 0.0 64.2



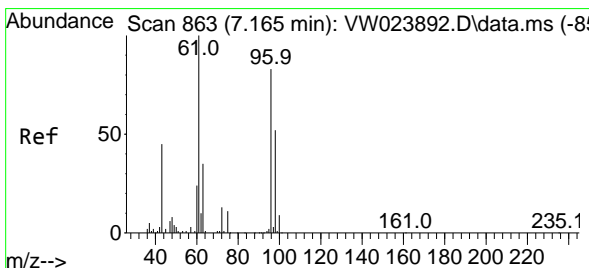
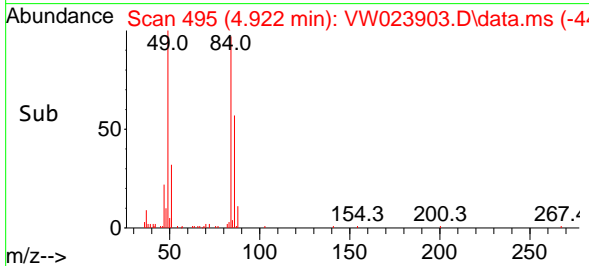
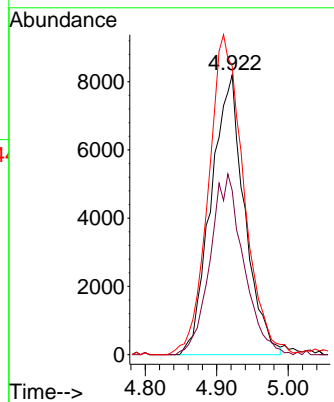


#16
 Methylene chloride
 Concen: 5.360 ug/L
 RT: 4.922 min Scan# 494
 Delta R.T. 0.006 min
 Lab File: VW023903.D
 Acq: 19 Jul 2022 23:44

Instrument :
 MSVOA_W
 ClientSampleId :
 F5C94

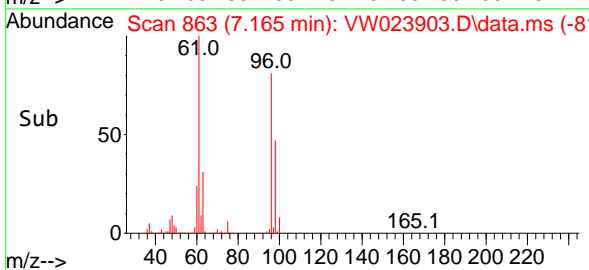
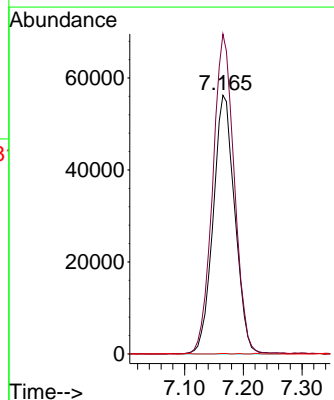
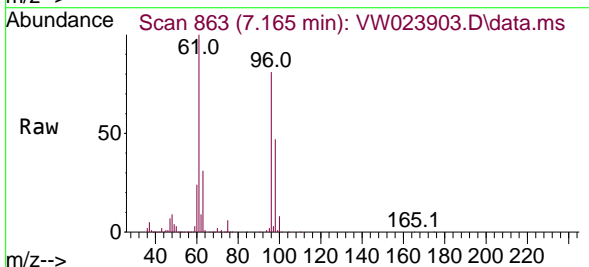


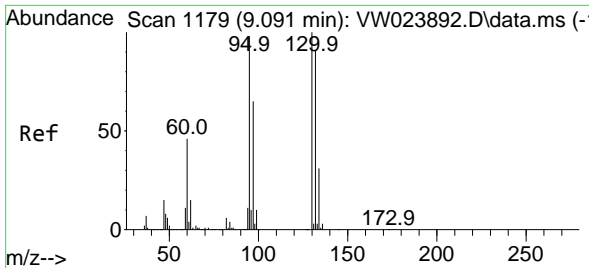
Tgt Ion: 84 Resp: 26696
 Ion Ratio Lower Upper
 84 100
 86 58.6 42.8 79.6
 49 103.1 85.4 158.6



#20
 cis-1,2-Dichloroethene
 Concen: 31.772 ug/L
 RT: 7.165 min Scan# 863
 Delta R.T. 0.000 min
 Lab File: VW023903.D
 Acq: 19 Jul 2022 23:44

Tgt Ion: 96 Resp: 144183
 Ion Ratio Lower Upper
 96 100
 61 123.7 90.6 168.2
 68 0.2 0.2 0.4#



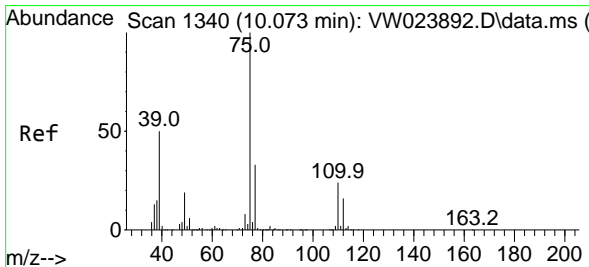
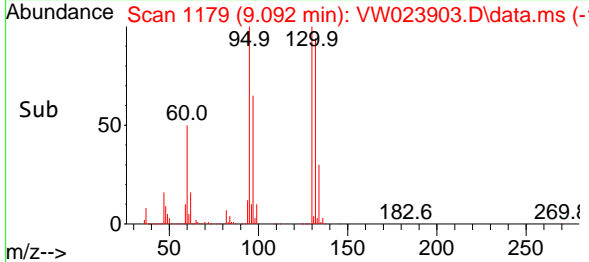
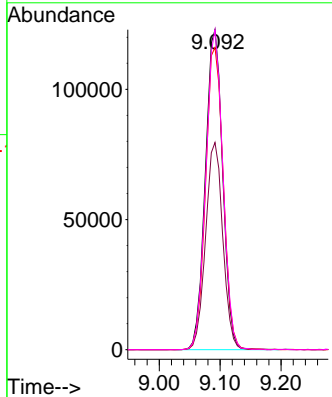
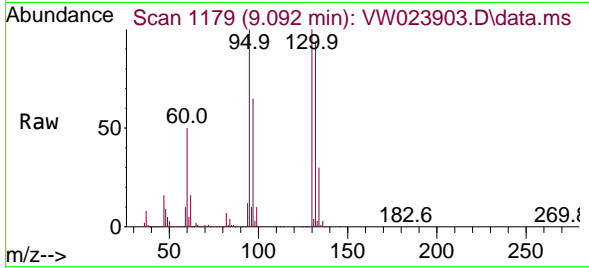


#34
 Trichloroethene
 Concen: 54.484 ug/L
 RT: 9.092 min Scan# 1179
 Delta R.T. 0.000 min
 Lab File: VW023903.D
 Acq: 19 Jul 2022 23:44

Instrument : MSVOA_W
 ClientSampleId : F5C94

Tgt Ion: 95 Resp: 242449

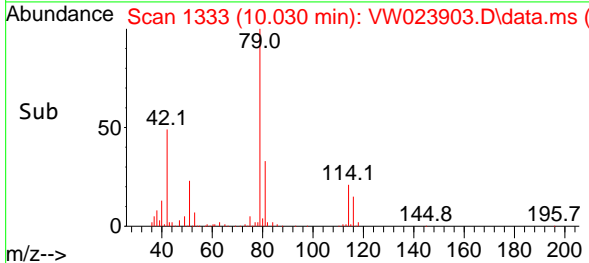
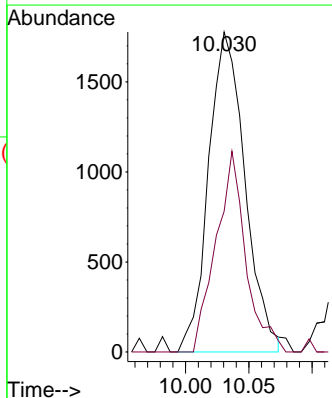
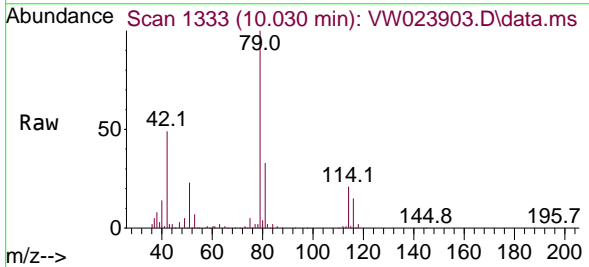
Ion	Ratio	Lower	Upper
95	100		
97	64.8	45.6	84.8
132	94.4	69.9	129.7
130	99.9	75.4	140.0

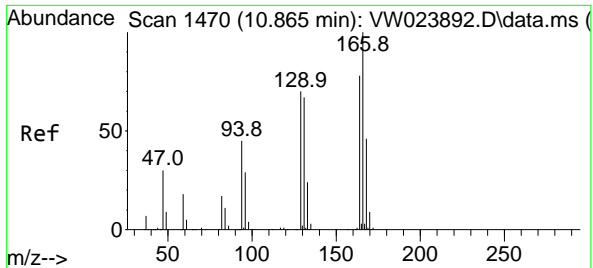


#39
 cis-1,3-Dichloropropene
 Concen: 0.559 ug/L
 RT: 10.030 min Scan# 1333
 Delta R.T. -0.042 min
 Lab File: VW023903.D
 Acq: 19 Jul 2022 23:44

Tgt Ion: 75 Resp: 3557

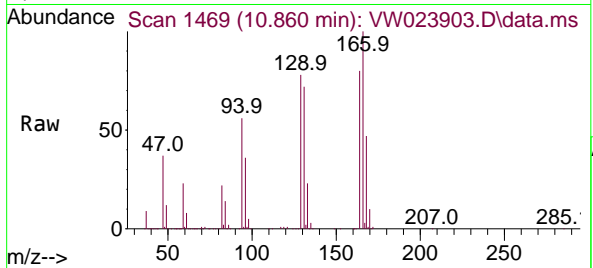
Ion	Ratio	Lower	Upper
75	100		
77	44.0	22.5	41.9





#46
 Tetrachloroethene
 Concen: 43.872 ug/L
 RT: 10.860 min Scan# 14
 Delta R.T. -0.006 min
 Lab File: VW023903.D
 Acq: 19 Jul 2022 23:44

Instrument :
 MSVOA_W
 ClientSampleId :
 F5C94



Tgt Ion:164 Resp: 150956

Ion	Ratio	Lower	Upper
164	100		
129	97.3	72.4	134.5
131	90.7	67.8	125.8
166	125.1	88.9	165.1

