

Data Path : Z:\voasrv\HPCHEM1\MSVOA_W\Data\VW072222\
 Data File : VW024048.D
 Acq On : 23 Jul 2022 11:55
 Operator : SY/VA
 Sample : N3790-24
 Misc : 3.47g/10mL/MSVOA_W/SOIL
 ALS Vial : 15 Sample Multiplier: 1

Instrument :
 MSVOA_W
 ClientSampleId :
 DBUM3

Integration Parameters: LSCINT.P

Integrator: RTE
 Smoothing : OFF
 Sampling : 1
 Start Thrs : 0.2
 Stop Thrs : 0

Filtering: 5
 Min Area: 0 % of largest Peak
 Max Peaks: 100
 Peak Location: TOP

If leading or trailing edge < 100 prefer < Baseline drop else tangent >
 Peak separation: 5

Method : Z:\voasrv\HPCHEM1\MSVOA_W\Method\SFAMWLM071322SMA.M
 Title : SFAM01.0

Signal : TIC: VW024048.D\data.ms

peak #	R.T. min	first scan	max scan	last scan	PK TY	peak height	corr. area	corr. % max.	% of total
1	2.343	68	72	87	rVB	96649	163543	22.77%	2.922%
2	2.879	155	160	170	rVB	59592	124725	17.37%	2.229%
3	3.592	276	277	281	rVB3	1845	1261	0.18%	0.023%
4	3.629	281	283	285	rBV3	1213	1080	0.15%	0.019%
5	3.830	310	316	318	rBV5	1145	2229	0.31%	0.040%
6	4.013	336	346	357	rBV2	58452	180829	25.18%	3.231%
7	4.604	440	443	446	rBV4	1009	1361	0.19%	0.024%
8	4.653	449	451	454	rBV4	795	951	0.13%	0.017%
9	4.806	474	476	477	rBV2	1433	1138	0.16%	0.020%
10	5.110	524	526	528	rBV3	1526	1540	0.21%	0.028%
11	5.391	568	572	575	rBV6	1497	2265	0.32%	0.040%
12	5.494	588	589	592	rVB3	1557	839	0.12%	0.015%
13	5.683	618	620	622	rBV3	1102	966	0.13%	0.017%
14	5.708	622	624	625	rBV2	1064	857	0.12%	0.015%
15	5.757	629	632	634	rBV3	912	977	0.14%	0.017%
16	5.854	646	648	651	rVV3	843	822	0.11%	0.015%
17	6.025	674	676	678	rBV3	1022	977	0.14%	0.017%
18	6.080	682	685	686	rBV3	873	987	0.14%	0.018%
19	6.232	707	710	713	rBV5	1039	1264	0.18%	0.023%
20	6.372	731	733	735	rVV3	974	881	0.12%	0.016%
21	6.500	751	754	757	rVV3	1668	1662	0.23%	0.030%
22	6.695	784	786	788	rBV3	939	770	0.11%	0.014%
23	6.921	821	823	826	rBV4	1115	1546	0.22%	0.028%
24	7.080	842	849	861	rBV	23594	61055	8.50%	1.091%
25	7.305	882	886	889	rVB6	2089	2866	0.40%	0.051%
26	7.354	889	894	895	rBV5	1076	1505	0.21%	0.027%
27	7.439	905	908	910	rBV4	850	899	0.13%	0.016%
28	7.647	932	942	952	rBV	133439	328754	45.77%	5.875%
29	7.890	978	982	984	rBV5	946	1351	0.19%	0.024%
30	8.000	998	1000	1002	rBV3	978	1062	0.15%	0.019%
31	8.092	1013	1015	1017	rVB3	1321	836	0.12%	0.015%
32	8.274	1035	1045	1060	rBV2	232964	718210	100.00%	12.834%
33	8.677	1109	1111	1114	rVB4	1197	995	0.14%	0.018%
34	8.768	1123	1126	1129	rBV4	1187	2000	0.28%	0.036%
35	8.841	1129	1138	1148	rVV	248925	480131	66.85%	8.580%
36	8.988	1160	1162	1167	rVB5	976	1339	0.19%	0.024%

Data Path : Z:\voasrv\HPCHEM1\MSVOA_W\Data\VW072222\
 Data File : VW024048.D
 Acq On : 23 Jul 2022 11:55
 Operator : SY/VA
 Sample : N3790-24
 Misc : 3.47g/10mL/MSVOA_W/SOIL
 ALS Vial : 15 Sample Multiplier: 1

Instrument :
 MSVOA_W
 ClientSampleId :
 DBUM3

Integration Parameters: LSCINT.P

Integrator: RTE
 Smoothing : OFF
 Sampling : 1
 Start Thrs : 0.2
 Stop Thrs : 0

Filtering: 5
 Min Area: 0 % of largest Peak
 Max Peaks: 100
 Peak Location: TOP

If leading or trailing edge < 100 prefer < Baseline drop else tangent >
 Peak separation: 5

Method : Z:\voasrv\HPCHEM1\MSVOA_W\Method\SFAMWLM071322SMA.M
 Title : SFAM01.0

37	9.274	1196	1209	1218	rBV	174647	362208	50.43%	6.473%
38	9.488	1242	1244	1248	rBV3	1000	1087	0.15%	0.019%
39	9.573	1255	1258	1260	rBV4	744	768	0.11%	0.014%
40	9.591	1260	1261	1264	rBV2	1040	1194	0.17%	0.021%
41	9.725	1281	1283	1287	rBV4	1140	1918	0.27%	0.034%
42	9.841	1298	1302	1303	rBV4	1001	1397	0.19%	0.025%
43	9.878	1307	1308	1310	rVB2	1391	876	0.12%	0.016%
44	10.036	1326	1334	1341	rBV	81764	154715	21.54%	2.765%
45	10.219	1362	1364	1366	rVB3	1056	793	0.11%	0.014%
46	10.256	1366	1370	1371	rBV3	722	939	0.13%	0.017%
47	10.323	1372	1381	1389	rBV	340712	573086	79.79%	10.241%
48	10.481	1405	1407	1410	rBV4	1586	2016	0.28%	0.036%
49	10.579	1417	1423	1432	rVB	53603	97123	13.52%	1.736%
50	10.695	1439	1442	1448	rVB5	2459	4227	0.59%	0.076%
51	10.926	1473	1480	1487	rBV	96370	165634	23.06%	2.960%
52	11.219	1526	1528	1530	rBV3	865	740	0.10%	0.013%
53	11.268	1533	1536	1540	rVB5	1617	2451	0.34%	0.044%
54	11.311	1540	1543	1546	rBV4	1020	1663	0.23%	0.030%
55	11.469	1566	1569	1572	rBV5	934	937	0.13%	0.017%
56	11.628	1587	1595	1605	rBV	379511	640209	89.14%	11.440%
57	11.969	1649	1651	1653	rBV3	998	922	0.13%	0.016%
58	12.030	1659	1661	1663	rBV3	836	1025	0.14%	0.018%
59	12.249	1696	1697	1701	rVB3	1396	1411	0.20%	0.025%
60	12.286	1701	1703	1705	rBV3	1157	1158	0.16%	0.021%
61	12.329	1708	1710	1711	rBV2	1231	1277	0.18%	0.023%
62	12.383	1717	1719	1722	rVB4	1174	1125	0.16%	0.020%
63	12.469	1728	1733	1735	rBV6	1408	2215	0.31%	0.040%
64	12.524	1739	1742	1743	rBV3	1471	1633	0.23%	0.029%
65	12.603	1751	1755	1760	rVB8	2533	4569	0.64%	0.082%
66	12.688	1762	1769	1776	rBV	162271	267255	37.21%	4.776%
67	12.841	1792	1794	1796	rBV3	792	918	0.13%	0.016%
68	12.865	1796	1798	1799	rBV2	1016	856	0.12%	0.015%
69	12.926	1804	1808	1811	rBV6	1610	3130	0.44%	0.056%
70	13.078	1828	1833	1837	rBV6	1642	3118	0.43%	0.056%
71	13.139	1840	1843	1846	rVB5	1868	2633	0.37%	0.047%
72	13.170	1846	1848	1850	rVB3	1299	741	0.10%	0.013%
73	13.200	1850	1853	1855	rBV4	918	1453	0.20%	0.026%
74	13.335	1873	1875	1877	rVB2	1235	832	0.12%	0.015%
75	13.389	1879	1884	1893	rVV10	2180	5479	0.76%	0.098%
76	13.554	1904	1911	1919	rBV	375039	590455	82.21%	10.551%

Data Path : Z:\voasrv\HPCHEM1\MSVOA_W\Data\VW072222\
 Data File : VW024048.D
 Acq On : 23 Jul 2022 11:55
 Operator : SY/VA
 Sample : N3790-24
 Misc : 3.47g/10mL/MSVOA_W/SOIL
 ALS Vial : 15 Sample Multiplier: 1

Instrument :
 MSVOA_W
 ClientSampleId :
 DBUM3

Integration Parameters: LSCINT.P

Integrator: RTE
 Smoothing : OFF
 Sampling : 1
 Start Thrs : 0.2
 Stop Thrs : 0

Filtering: 5
 Min Area: 0 % of largest Peak
 Max Peaks: 100
 Peak Location: TOP

If leading or trailing edge < 100 prefer < Baseline drop else tangent >
 Peak separation: 5

Method : Z:\voasrv\HPCHEM1\MSVOA_W\Method\SFAMWLM071322SMA.M
 Title : SFAM01.0

77	13.743	1941	1942	1945	rVB3	1215	929	0.13%	0.017%
78	13.853	1952	1960	1970	rBV	341089	552528	76.93%	9.874%
79	14.048	1991	1992	1994	rBV2	1633	1252	0.17%	0.022%
80	14.182	2011	2014	2018	rVB4	1041	1360	0.19%	0.024%
81	14.322	2032	2037	2043	rBV6	6694	10565	1.47%	0.189%
82	14.517	2067	2069	2078	rVB10	2404	5411	0.75%	0.097%
83	14.718	2098	2102	2106	rBV7	2255	3559	0.50%	0.064%
84	14.761	2108	2109	2111	rBV2	1441	1009	0.14%	0.018%
85	14.792	2111	2114	2115	rBV3	1385	1307	0.18%	0.023%
86	15.066	2157	2159	2163	rVB5	1098	1090	0.15%	0.019%
87	15.121	2166	2168	2169	rBV2	1191	893	0.12%	0.016%
88	15.163	2173	2175	2176	rBV2	1297	1032	0.14%	0.018%
89	15.291	2193	2196	2199	rVB3	1310	1953	0.27%	0.035%
90	15.328	2199	2202	2203	rBV3	768	831	0.12%	0.015%
91	15.627	2249	2251	2252	rBV2	1074	995	0.14%	0.018%
92	15.718	2264	2266	2268	rBV3	1598	1789	0.25%	0.032%
93	15.877	2290	2292	2294	rVB2	1433	1096	0.15%	0.020%
94	16.084	2323	2326	2330	rBV4	916	1741	0.24%	0.031%
95	16.279	2356	2358	2360	rBV3	840	886	0.12%	0.016%
96	16.304	2360	2362	2364	rBV3	1109	988	0.14%	0.018%
97	16.425	2380	2382	2383	rBV2	1290	1046	0.15%	0.019%
98	16.462	2386	2388	2391	rVV3	805	759	0.11%	0.014%
99	16.547	2401	2402	2406	rBV4	1119	1201	0.17%	0.021%
100	16.627	2414	2415	2417	rBV2	1301	1182	0.16%	0.021%

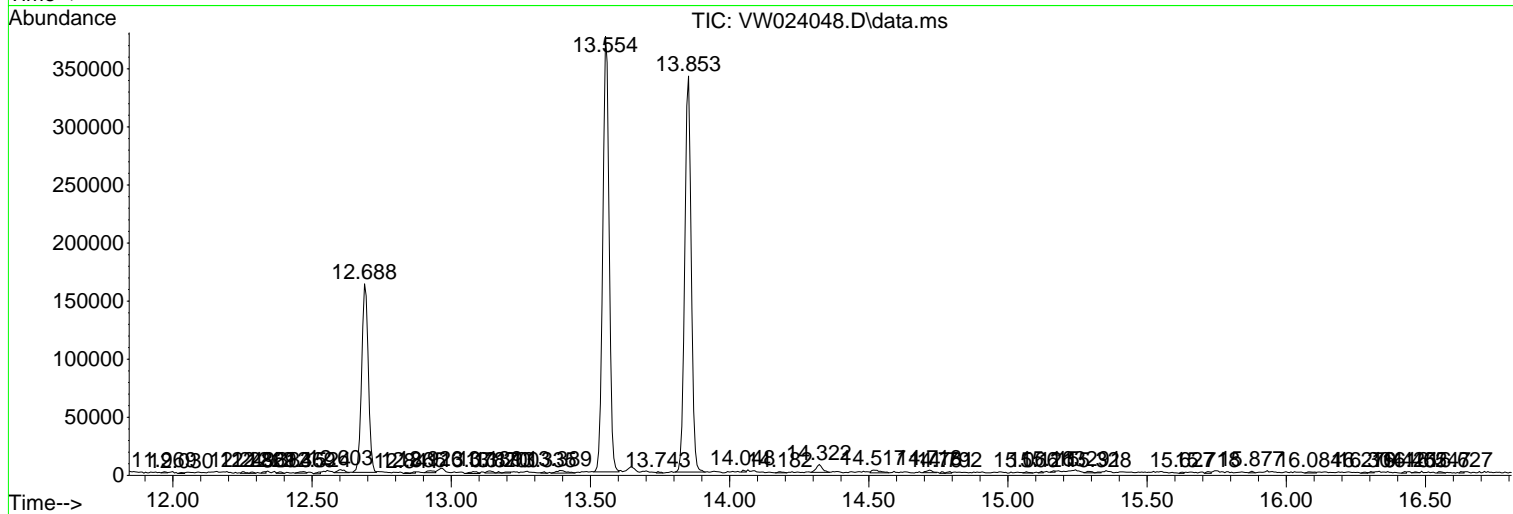
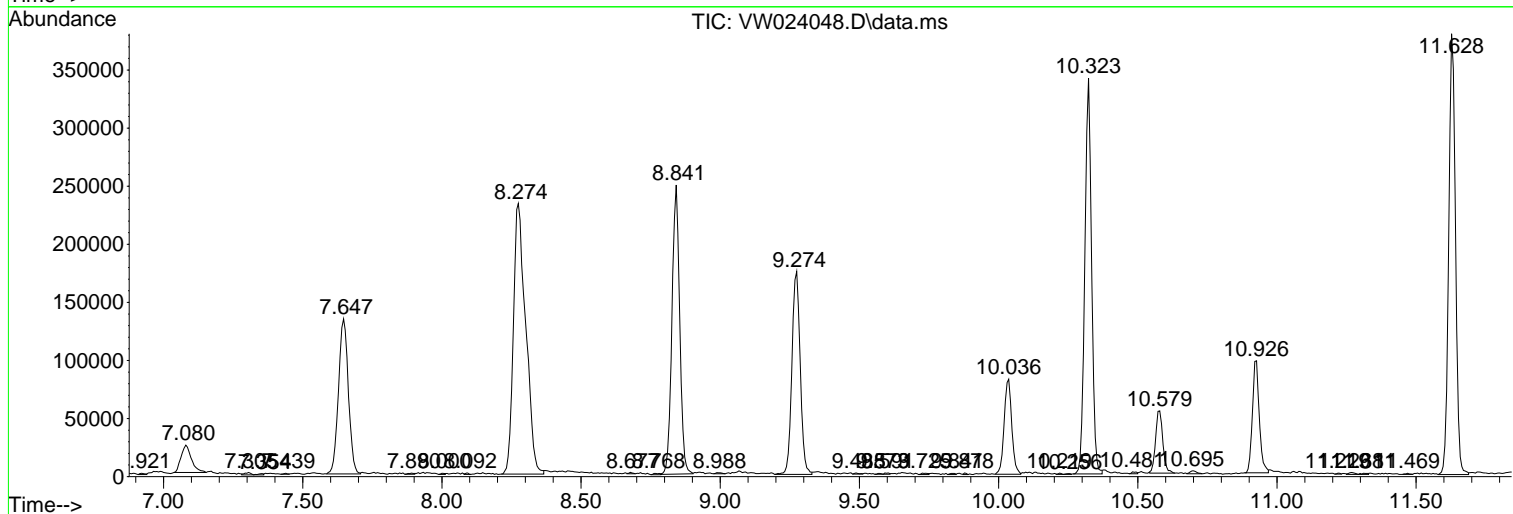
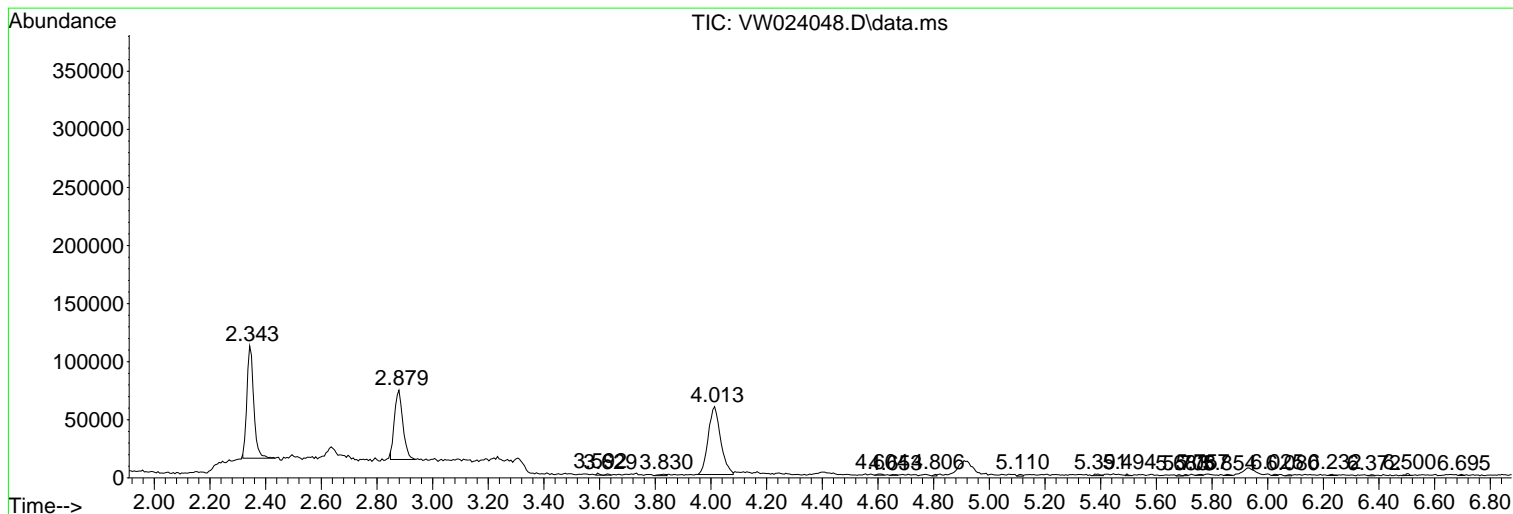
Sum of corrected areas: 5596061

Data Path : Z:\voasrv\HPCHEM1\MSVOA_W\Data\VW072222\
 Data File : VW024048.D
 Acq On : 23 Jul 2022 11:55
 Operator : SY/VA
 Sample : N3790-24
 Misc : 3.47g/10mL/MSVOA_W/SOIL
 ALS Vial : 15 Sample Multiplier: 1

Instrument :
 MSVOA_W
 ClientSampleId :
 DBUM3

Quant Method : Z:\voasrv\HPCHEM1\MSVOA_W\Method\SFAMWLM071322SMA.M
 Quant Title : SFAM01.0

TIC Library : C:\Database\NIST20.L
 TIC Integration Parameters: LSCINT.P



Library Search Compound Report

Data Path : Z:\voasrv\HPCHEM1\MSVOA_W\Data\VW072222\
Data File : VW024048.D
Acq On : 23 Jul 2022 11:55
Operator : SY/VA
Sample : N3790-24
Misc : 3.47g/10mL/MSVOA_W/SOIL
ALS Vial : 15 Sample Multiplier: 1

Instrument :
MSVOA_W
ClientSampleId :
DBUM3

Quant Method : Z:\voasrv\HPCHEM1\MSVOA_W\Method\SFAMWLM071322SMA.M
Quant Title : SFAM01.0

TIC Library : C:\Database\NIST20.L
TIC Integration Parameters: LSCINT.P

No Library Search Compounds Detected

Data Path : Z:\voasrv\HPCHEM1\MSVOA_W\Data\VW072222\
Data File : VW024048.D
Acq On : 23 Jul 2022 11:55
Operator : SY/VA
Sample : N3790-24
Misc : 3.47g/10mL/MSVOA_W/SOIL
ALS Vial : 15 Sample Multiplier: 1

Instrument :
MSVOA_W
ClientSampleId :
DBUM3

Quant Method : Z:\voasrv\HPCHEM1\MSVOA_W\Method\SFAMWLM071322SMA.M
Quant Title : SFAM01.0

TIC Library : C:\Database\NIST0.L
TIC Integration Parameters: LSCINT.P

TIC Top Hit name	RT	EstConc	Units	Response	--Internal Standard--		
					#	RT	Resp Conc
