

Data Path : Z:\voasrv\HPCHEM1\MSVOA\_W\Data\VW072224\  
 Data File : VW029683.D  
 Acq On : 22 Jul 2024 15:02  
 Operator : SY/MD  
 Sample : P3298-11  
 Misc : 5.57g/10mL/MSVOA\_W/SOIL/A  
 ALS Vial : 14 Sample Multiplier: 1

**Instrument :**  
 MSVOA\_W  
**ClientSampleId :**  
 BHB31

**Manual Integrations**  
**APPROVED**  
 Reviewed By :Romaben Patel 07/23/2024  
 Supervised By :Mahesh Dadoda 07/24/2024

Quant Time: Jul 22 15:32:56 2024  
 Quant Method : Z:\voasrv\HPCHEM1\MSVOA\_W\Method\SFAMWLM070824SMA.M  
 Quant Title : SFAM01.0  
 QLast Update : Fri Jul 19 23:16:32 2024  
 Response via : Initial Calibration

Compound	R.T.	QIon	Response	Conc	Units	Dev(Min)
<b>Internal Standards</b>						
1) 1,4-Difluorobenzene	8.843	114	376429	25.000	ug/L	0.00
28) Chlorobenzene-d5	11.629	117	370006	25.000	ug/L	0.00
58) 1,4-Dichlorobenzene-d4	13.556	152	169324	25.000	ug/L	0.00
<b>System Monitoring Compounds</b>						
4) Vinyl Chloride-d3	2.363	65	71501	11.758	ug/L	0.00
Spiked Amount	25.000	Range 30 - 150	Recovery	=	47.040%	
7) Chloroethane-d5	2.899	69	61116	13.958	ug/L	0.00
Spiked Amount	25.000	Range 30 - 150	Recovery	=	55.840%	
11) 1,1-Dichloroethene-d2	4.027	65	36704	13.441	ug/L	0.00
Spiked Amount	25.000	Range 45 - 110	Recovery	=	53.760%	
21) 2-Butanone-d5	7.075	46	60467	33.125	ug/L	0.00
Spiked Amount	50.000	Range 20 - 135	Recovery	=	66.240%	
24) Chloroform-d	7.648	84	182104	16.734	ug/L	0.00
Spiked Amount	25.000	Range 40 - 150	Recovery	=	66.920%	
26) 1,2-Dichloroethane-d4	8.307	65	112891m	17.686	ug/L	0.00
Spiked Amount	25.000	Range 70 - 130	Recovery	=	70.760%	
32) Benzene-d6	8.276	84	341783	15.420	ug/L	0.00
Spiked Amount	25.000	Range 20 - 135	Recovery	=	61.680%	
36) 1,2-Dichloropropane-d6	9.270	67	118514	16.723	ug/L	0.00
Spiked Amount	25.000	Range 70 - 120	Recovery	=	66.880%#	
41) Toluene-d8	10.319	98	289967	14.875	ug/L	0.00
Spiked Amount	25.000	Range 30 - 130	Recovery	=	59.520%	
43) trans-1,3-Dichloroprop...	10.575	79	43082	14.355	ug/L	0.00
Spiked Amount	25.000	Range 30 - 135	Recovery	=	57.440%	
47) 2-Hexanone-d5	10.922	63	43489	33.770	ug/L	0.00
Spiked Amount	50.000	Range 20 - 135	Recovery	=	67.540%	
56) 1,1,2,2-Tetrachloroeth...	12.690	84	99003	17.206	ug/L	0.00
Spiked Amount	25.000	Range 45 - 120	Recovery	=	68.840%	
66) 1,2-Dichlorobenzene-d4	13.848	152	104492	17.720	ug/L	0.00
Spiked Amount	25.000	Range 75 - 120	Recovery	=	70.880%#	
<b>Target Compounds</b>						
16) Methylene chloride	4.923	84	26776	3.973	ug/L	95
20) cis-1,2-Dichloroethene	7.173	96	184905	32.630	ug/L	91
34) Trichloroethene	9.093	95	7283	1.191	ug/L	97
46) Tetrachloroethene	10.855	164	35449	8.162	ug/L	96

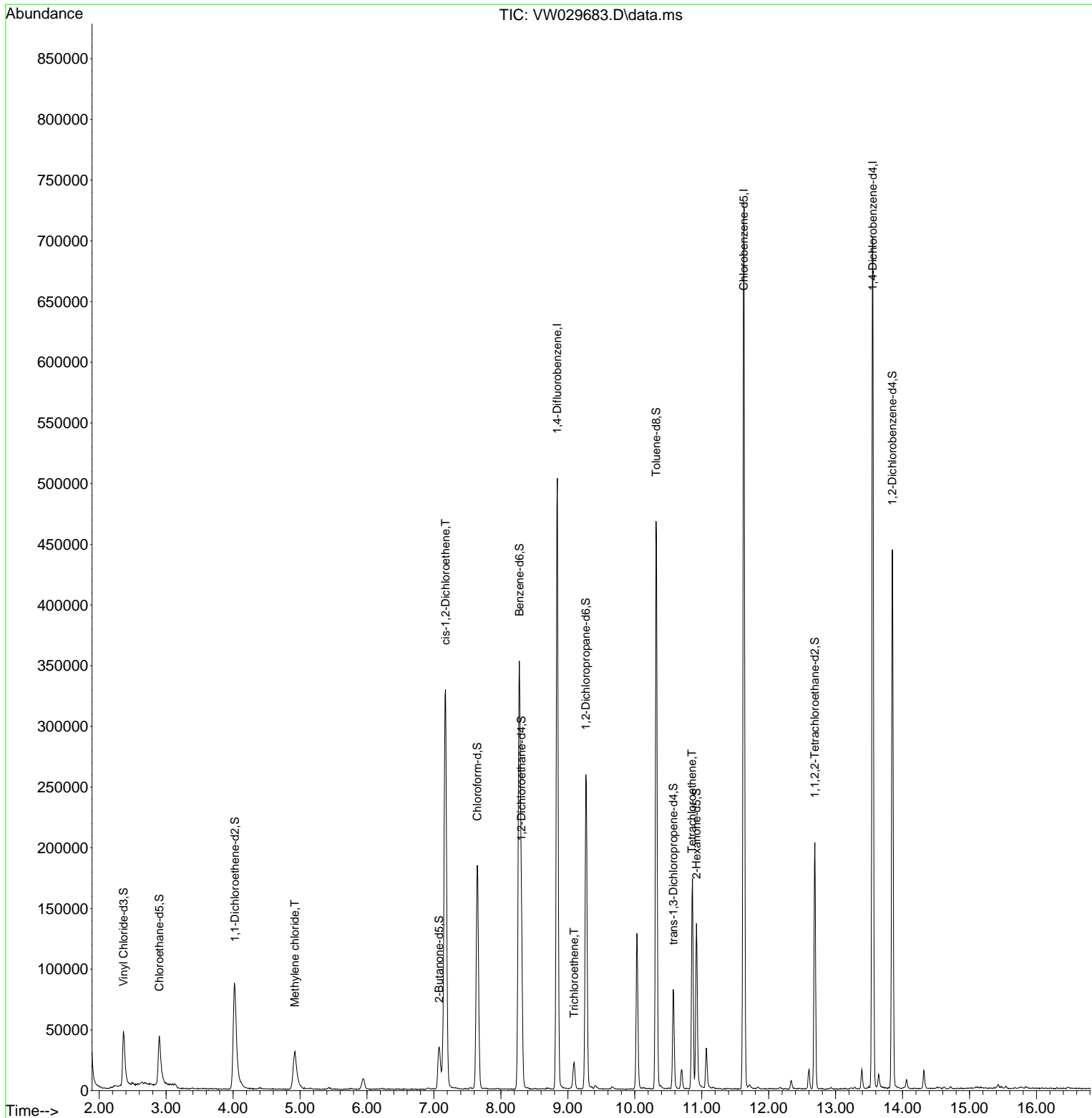
(#) = qualifier out of range (m) = manual integration (+) = signals summed

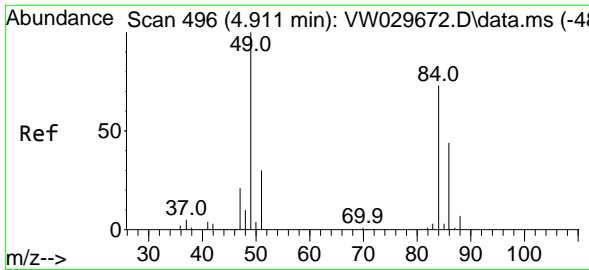
Data Path : Z:\voasrv\HPCHEM1\MSVOA\_W\Data\VW072224\  
 Data File : VW029683.D  
 Acq On : 22 Jul 2024 15:02  
 Operator : SY/MD  
 Sample : P3298-11  
 Misc : 5.57g/10mL/MSVOA\_W/SOIL/A  
 ALS Vial : 14 Sample Multiplier: 1

**Instrument :**  
 MSVOA\_W  
**ClientSampleId :**  
 BHB31

Quant Time: Jul 22 15:32:56 2024  
 Quant Method : Z:\voasrv\HPCHEM1\MSVOA\_W\Method\SFAMWLM070824SMA.M  
 Quant Title : SFAM01.0  
 QLast Update : Fri Jul 19 23:16:32 2024  
 Response via : Initial Calibration

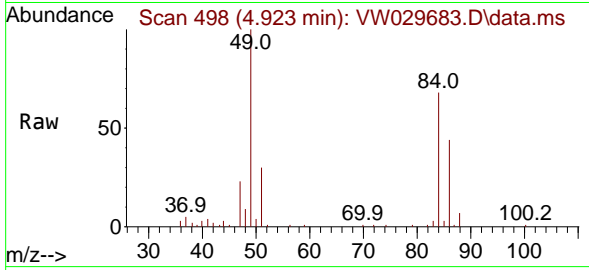
**Manual Integrations**  
**APPROVED**  
 Reviewed By :Romaben Patel 07/23/2024  
 Supervised By :Mahesh Dadoda 07/24/2024





#16  
 Methylene chloride  
 Concen: 3.973 ug/L  
 RT: 4.923 min Scan# 498  
 Delta R.T. 0.000 min  
 Lab File: VW029683.D  
 Acq: 22 Jul 2024 15:02

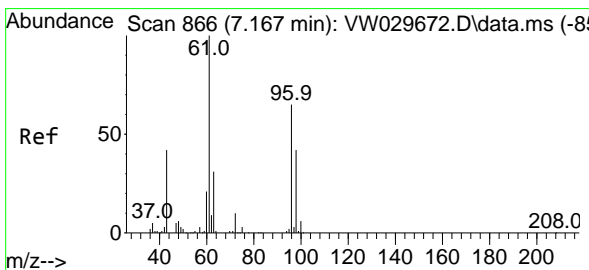
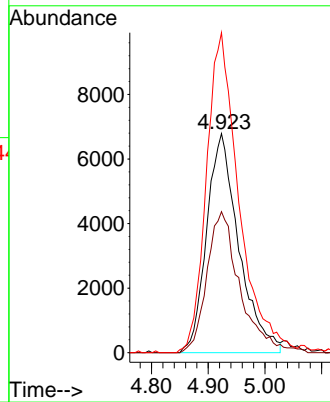
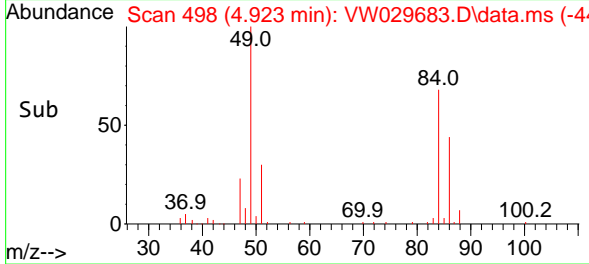
Instrument : MSVOA\_W  
 Client Sampled : BHB31



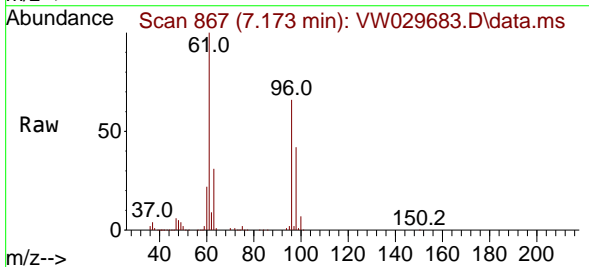
Tgt Ion: 84 Resp: 26770  
 Ion Ratio Lower Upper  
 84 100  
 86 64.4 46.2 85.8  
 49 146.1 96.7 179.7

Manual Integrations  
**APPROVED**

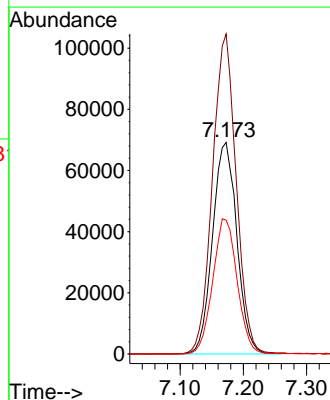
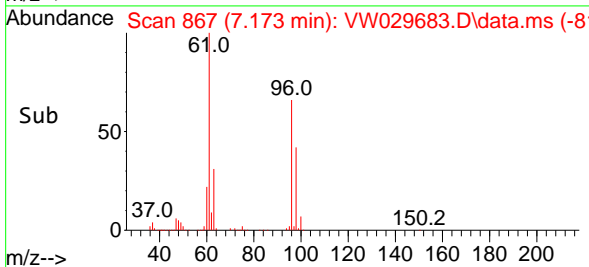
Reviewed By :Romaben Patel 07/23/2024  
 Supervised By :Mahesh Dadoda 07/24/2024

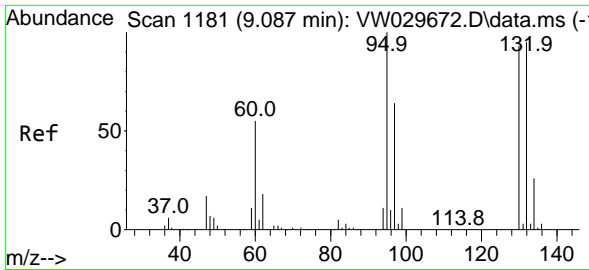


#20  
 cis-1,2-Dichloroethene  
 Concen: 32.630 ug/L  
 RT: 7.173 min Scan# 867  
 Delta R.T. 0.006 min  
 Lab File: VW029683.D  
 Acq: 22 Jul 2024 15:02



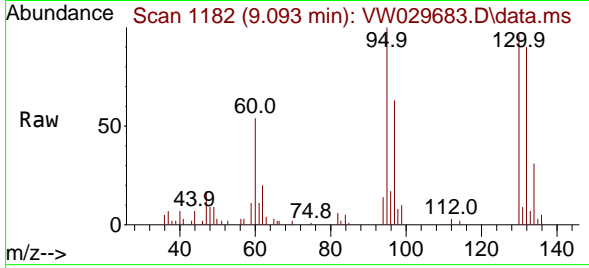
Tgt Ion: 96 Resp: 184905  
 Ion Ratio Lower Upper  
 96 100  
 61 151.2 97.4 180.8  
 98 63.2 41.6 77.2





#34  
 Trichloroethene  
 Concen: 1.191 ug/L  
 RT: 9.093 min Scan# 1181  
 Delta R.T. 0.000 min  
 Lab File: VW029683.D  
 Acq: 22 Jul 2024 15:02

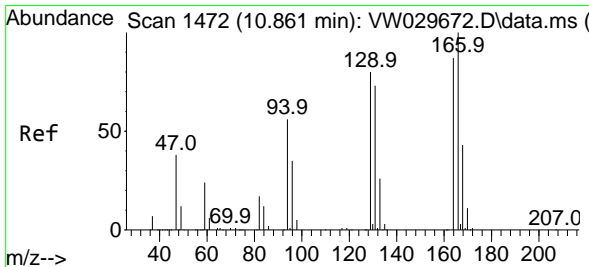
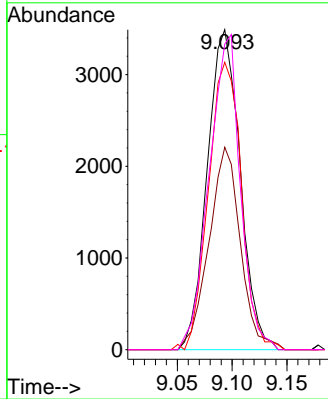
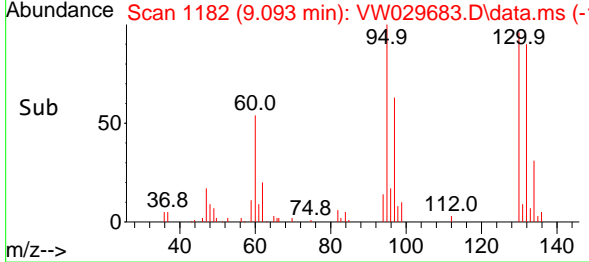
Instrument : MSVOA\_W  
 ClientSampleId : BHB31



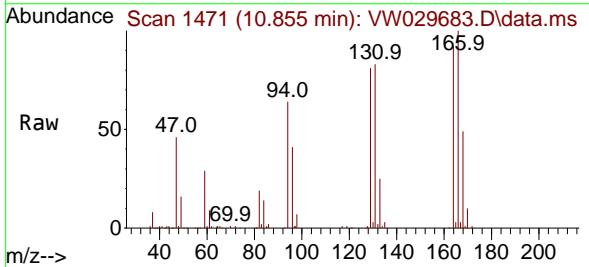
Tgt Ion: 95 Resp: 728  
 Ion Ratio Lower Upper  
 95 100  
 97 63.2 47.3 87.9  
 132 89.8 65.8 122.2  
 130 95.5 67.8 125.8

Manual Integrations  
 APPROVED

Reviewed By :Romaben Patel 07/23/2024  
 Supervised By :Mahesh Dadoda 07/24/2024



#46  
 Tetrachloroethene  
 Concen: 8.162 ug/L  
 RT: 10.855 min Scan# 1471  
 Delta R.T. -0.006 min  
 Lab File: VW029683.D  
 Acq: 22 Jul 2024 15:02



Tgt Ion:164 Resp: 35449  
 Ion Ratio Lower Upper  
 164 100  
 129 88.4 60.0 111.4  
 131 89.6 64.6 120.0  
 166 108.6 80.4 149.2

