

Data Path : Z:\voasrv\HPCHEM1\MSVOA\_W\Data\VW072624\  
 Data File : VW029758.D  
 Acq On : 26 Jul 2024 17:51  
 Operator : SY/MD  
 Sample : P3361-10  
 Misc : 8.15g/10mL/MSVOA\_W/SOIL/A  
 ALS Vial : 17 Sample Multiplier: 1

**Instrument :**  
 MSVOA\_W  
**ClientSampleId :**  
 E20P2

Quant Time: Jul 27 00:57:56 2024  
 Quant Method : Z:\voasrv\HPCHEM1\MSVOA\_W\Method\SFAMWLM072424SMA.M  
 Quant Title : SFAM01.0  
 QLast Update : Sat Jul 27 00:53:25 2024  
 Response via : Initial Calibration

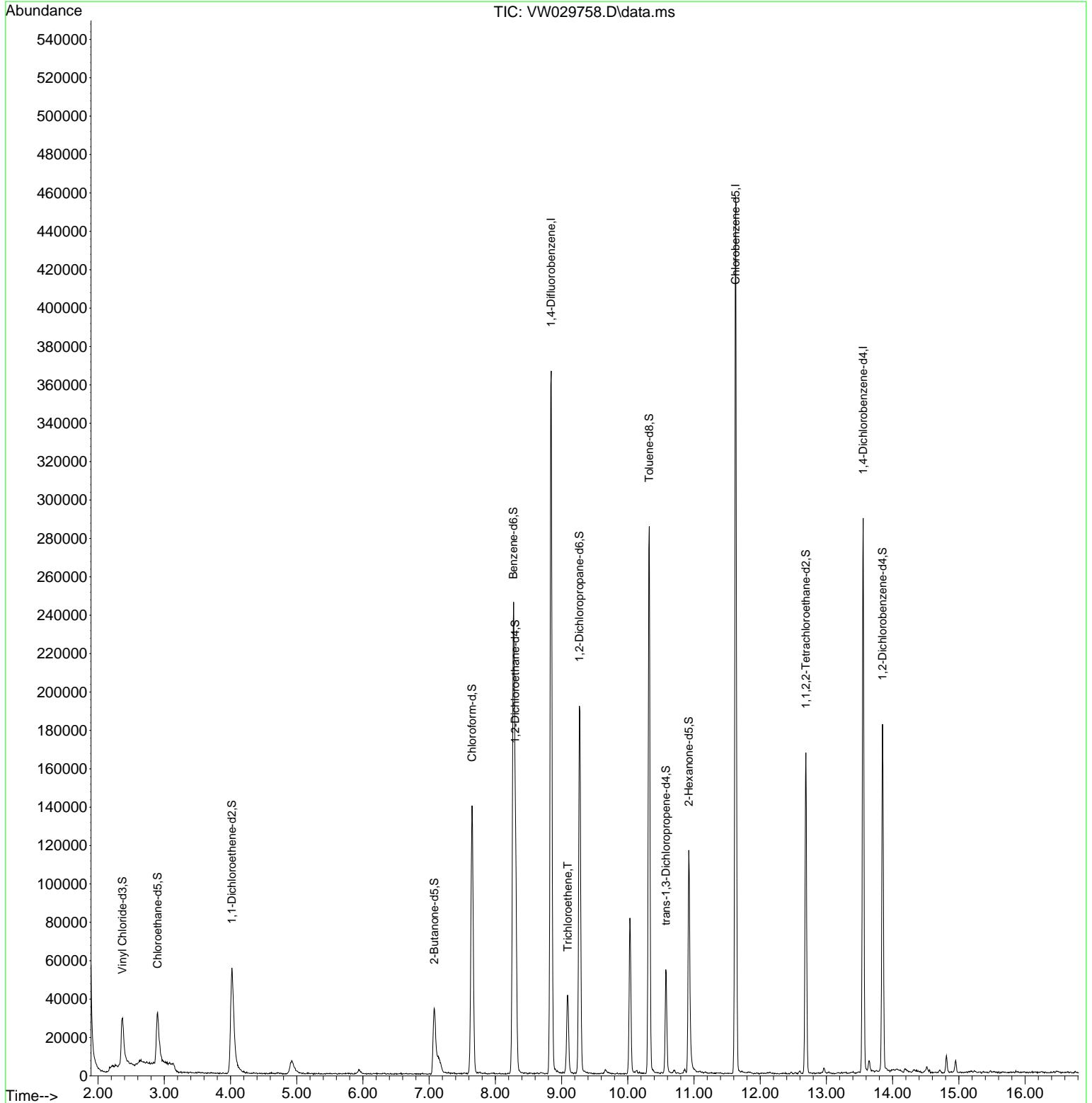
Compound	R.T.	QIon	Response	Conc	Units	Dev(Min)
-----						
Internal Standards						
1) 1,4-Difluorobenzene	8.843	114	276273	25.000	ug/L	0.00
28) Chlorobenzene-d5	11.629	117	221110	25.000	ug/L	0.00
58) 1,4-Dichlorobenzene-d4	13.556	152	66675	25.000	ug/L	0.00
System Monitoring Compounds						
4) Vinyl Chloride-d3	2.369	65	47530	12.118	ug/L	0.00
Spiked Amount	25.000	Range 30 - 150	Recovery =	48.480%		
7) Chloroethane-d5	2.899	69	43836	15.655	ug/L	0.00
Spiked Amount	25.000	Range 30 - 150	Recovery =	62.600%		
11) 1,1-Dichloroethene-d2	4.021	65	24026	13.419	ug/L	0.00
Spiked Amount	25.000	Range 45 - 110	Recovery =	53.680%		
21) 2-Butanone-d5	7.075	46	58576	54.489	ug/L	0.00
Spiked Amount	50.000	Range 20 - 135	Recovery =	108.980%		
24) Chloroform-d	7.648	84	137126	19.174	ug/L	0.00
Spiked Amount	25.000	Range 40 - 150	Recovery =	76.680%		
26) 1,2-Dichloroethane-d4	8.301	65	89248	21.909	ug/L	0.00
Spiked Amount	25.000	Range 70 - 130	Recovery =	87.640%		
32) Benzene-d6	8.270	84	230709	19.311	ug/L	0.00
Spiked Amount	25.000	Range 20 - 135	Recovery =	77.240%		
36) 1,2-Dichloropropane-d6	9.270	67	87770	23.008	ug/L	0.00
Spiked Amount	25.000	Range 70 - 120	Recovery =	92.040%		
41) Toluene-d8	10.325	98	181567	17.092	ug/L	0.00
Spiked Amount	25.000	Range 30 - 130	Recovery =	68.360%		
43) trans-1,3-Dichloroprop...	10.575	79	28200	18.269	ug/L	0.00
Spiked Amount	25.000	Range 30 - 135	Recovery =	73.080%		
47) 2-Hexanone-d5	10.922	63	35348	56.196	ug/L	0.00
Spiked Amount	50.000	Range 20 - 135	Recovery =	112.400%		
56) 1,1,2,2-Tetrachloroeth...	12.690	84	82349	29.073	ug/L	0.00
Spiked Amount	25.000	Range 45 - 120	Recovery =	116.280%		
66) 1,2-Dichlorobenzene-d4	13.848	152	42921	20.732	ug/L	0.00
Spiked Amount	25.000	Range 75 - 120	Recovery =	82.920%		
Target Compounds						
34) Trichloroethene	9.093	95	14526	3.658	ug/L	91
-----						

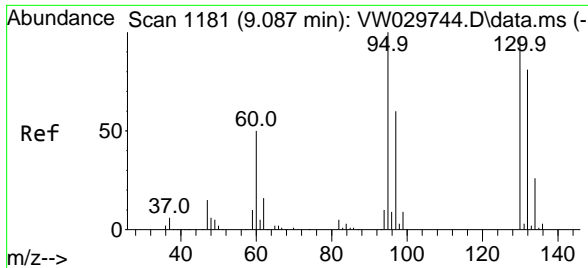
(#) = qualifier out of range (m) = manual integration (+) = signals summed

Data Path : Z:\voasrv\HPCHEM1\MSVOA\_W\Data\VW072624\  
 Data File : VW029758.D  
 Acq On : 26 Jul 2024 17:51  
 Operator : SY/MD  
 Sample : P3361-10  
 Misc : 8.15g/10mL/MSVOA\_W/SOIL/A  
 ALS Vial : 17 Sample Multiplier: 1

Instrument :  
 MSVOA\_W  
 ClientSampleId :  
 E20P2

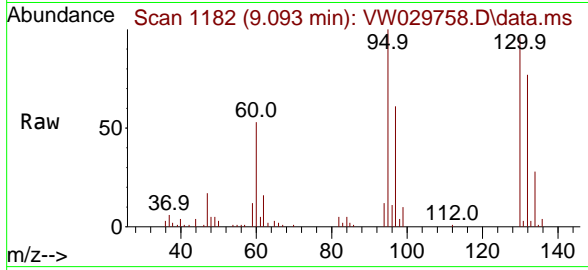
Quant Time: Jul 27 00:57:56 2024  
 Quant Method : Z:\voasrv\HPCHEM1\MSVOA\_W\Method\SFAMWLM072424SMA.M  
 Quant Title : SFAM01.0  
 QLast Update : Sat Jul 27 00:53:25 2024  
 Response via : Initial Calibration





#34  
 Trichloroethene  
 Concen: 3.658 ug/L  
 RT: 9.093 min Scan# 1182  
 Delta R.T. 0.006 min  
 Lab File: VW029758.D  
 Acq: 26 Jul 2024 17:51

Instrument : MSVOA\_W  
 ClientSampleId : E20P2



Tgt Ion: 95 Resp: 14526

Ion	Ratio	Lower	Upper
95	100		
97	61.3	45.6	84.8
132	76.6	65.2	121.0
130	96.4	69.9	129.7

