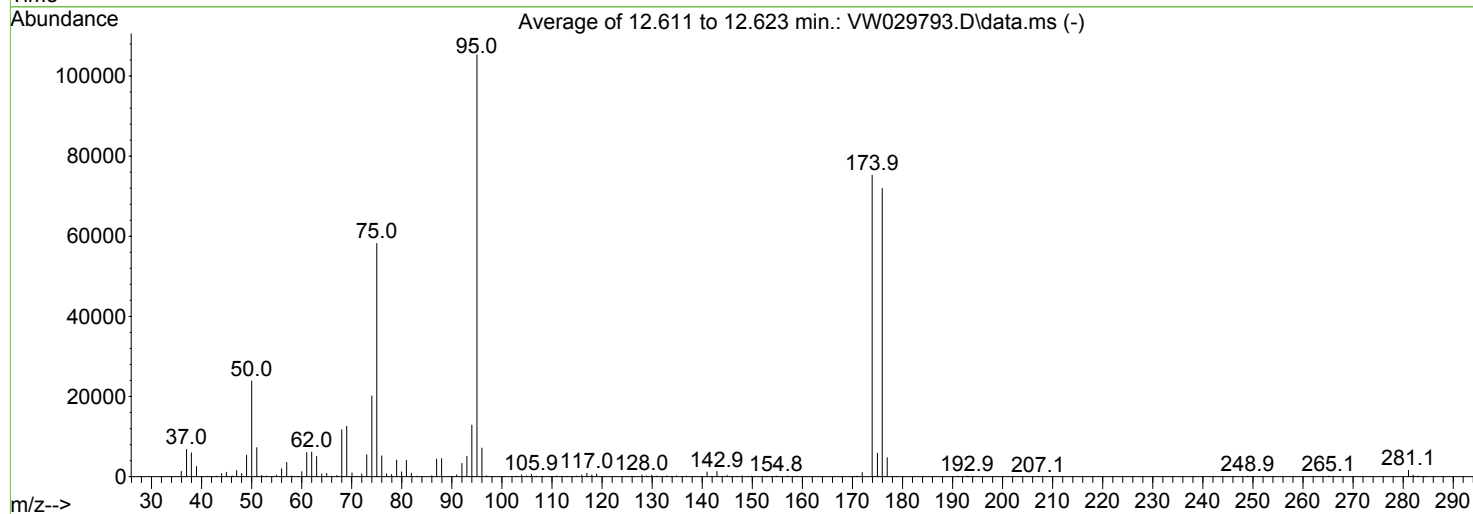
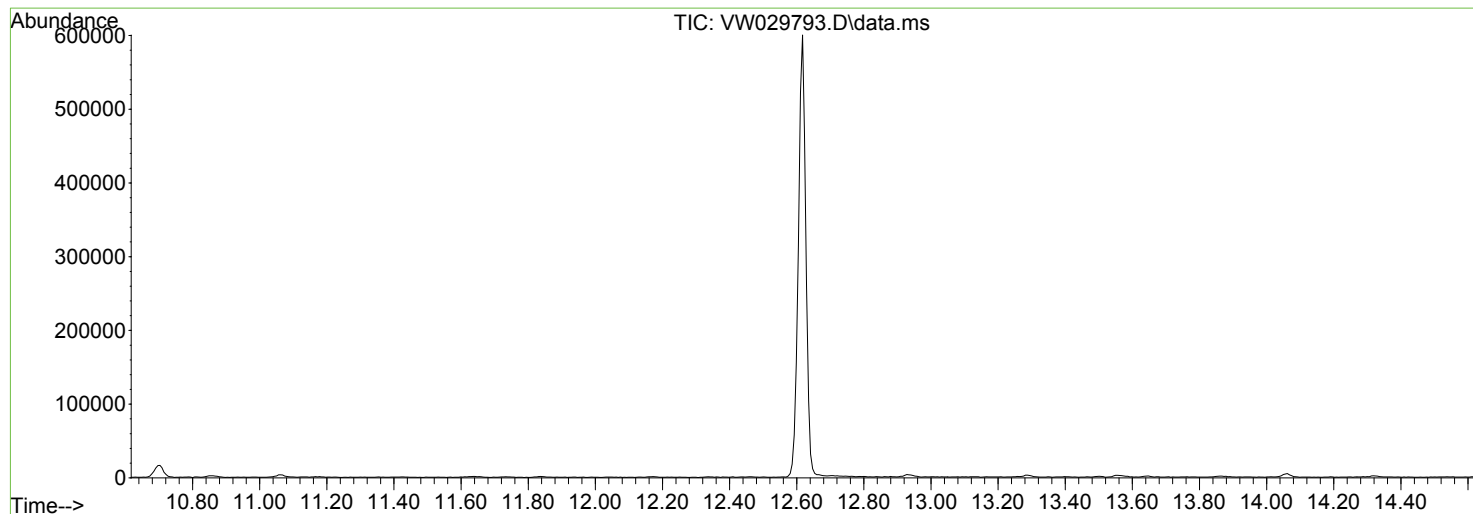


Data Path : Z:\voasrv\HPCHEM1\MSVOA_W\Data\VW073024\
 Data File : VW029793.D
 Acq On : 30 Jul 2024 08:18
 Operator : SY/MD
 Sample : BFB536
 Misc : 5.00g/10mL/MSVOA_W/SOIL
 ALS Vial : 1 Sample Multiplier: 1

Instrument :
 MSVOA_W
 ClientSampleId :
 BFB536

Integration File: LSCINT.P

Method : Z:\voasrv\HPCHEM1\MSVOA_W\Method\SFAMWLM072424SMA.M
 Title : SFAM01.0
 Last Update : Fri Aug 02 01:45:39 2024



AutoFind: Scans 1759, 1760, 1761; Background Corrected with Scan 1751

Target Mass	Rel. to Mass	Lower Limit%	Upper Limit%	Rel. Abn%	Raw Abn	Result
50	95	15	40	22.7	23893	PASS
75	95	30	80	55.3	58245	PASS
95	95	100	100	100.0	105293	PASS
96	95	5	9	6.8	7132	PASS
173	174	0.00	2	0.0	0	PASS
174	95	50	120	71.5	75267	PASS
175	174	5	9	7.8	5846	PASS
176	174	95	101	95.6	71955	PASS
177	176	5	9	6.6	4759	PASS

m/z	Abundance
36.00	1719.0
37.00	7281.0
38.00	6554.0
39.00	2872.0
40.10	337.0
41.20	69.0
43.10	88.0
44.00	1066.0
45.00	1239.0
46.10	261.0
47.00	1621.0
48.00	810.0
49.00	5532.0
50.00	25160.0
51.10	7593.0
52.10	331.0
53.00	250.0
53.90	95.0
55.00	438.0
56.00	1969.0
57.00	3675.0
58.10	110.0
59.10	129.0
60.00	1195.0
61.00	6213.0
62.00	6648.0
63.00	5387.0
64.00	819.0
65.00	1030.0
66.00	108.0
67.10	306.0
68.00	12375.0
69.00	12519.0
70.10	1094.0
71.10	88.0
72.00	719.0
73.00	5844.0
74.00	19568.0
75.00	59376.0
76.00	5361.0
77.00	669.0
78.00	461.0
79.00	4169.0
80.00	1080.0
80.90	4150.0
81.90	891.0
83.10	170.0
86.00	184.0
87.00	4157.0
87.90	4683.0
90.90	423.0
92.00	3431.0
93.00	5079.0
94.00	12499.0
95.00	103704.0
96.00	6980.0
97.00	340.0
102.90	145.0
103.90	501.0
105.00	205.0
105.90	475.0
107.00	102.0
107.90	58.0
110.00	89.0
111.00	153.0
111.90	119.0
113.10	144.0
115.00	243.0
116.00	411.0
117.00	854.0
117.90	424.0
118.90	866.0
123.80	89.0
124.80	114.0
125.90	80.0
128.00	409.0
128.90	190.0
129.90	302.0
130.90	190.0
133.00	320.0
133.80	115.0
134.80	164.0
136.90	159.0
141.00	1018.0
141.80	135.0
142.90	1367.0
145.00	442.0
145.90	211.0
147.00	54.0
148.00	131.0
149.00	120.0
149.90	91.0

Instrument :
MSVOA_W
ClientSampleId :
BFB536

151.90	118.0
153.00	100.0
153.90	52.0
154.80	242.0
156.00	51.0
157.10	129.0
158.00	67.0
159.00	110.0
160.70	144.0
163.10	85.0
170.20	73.0
170.80	194.0
172.00	1042.0
174.00	69688.0
175.00	5424.0
176.00	63704.0
177.00	3671.0
178.00	131.0
178.70	52.0
191.10	184.0
192.10	75.0
192.90	266.0
194.10	86.0
207.10	147.0
248.90	218.0
250.00	87.0
265.10	189.0
266.00	172.0
267.10	90.0
281.10	3026.0
282.00	891.0
282.90	395.0
284.10	66.0

Instrument :
MSVOA_W
ClientSampleId :
BFB536

m/z	Abundance
36.00	1542.0
37.00	7952.0
38.00	6514.0
39.00	2782.0
39.90	415.0
41.20	88.0
43.00	157.0
44.00	985.0
45.00	1250.0
46.10	205.0
47.00	1756.0
48.00	904.0
49.00	6014.0
50.00	27232.0
51.00	8338.0
52.00	395.0
53.00	173.0
53.90	95.0
55.00	430.0
56.00	2244.0
57.00	3862.0
58.00	209.0
58.90	72.0
60.00	1346.0
61.00	6586.0
62.00	6892.0
63.00	5502.0
64.00	655.0
65.00	798.0
66.00	107.0
67.00	432.0
68.00	13059.0
69.00	14419.0
70.00	1075.0
71.10	110.0
72.00	812.0
73.00	6398.0
74.00	23648.0
75.00	66984.0
76.00	5836.0
76.90	838.0
77.80	505.0
78.90	4891.0
79.90	1522.0
80.90	4334.0
81.90	916.0
83.00	95.0
85.90	199.0
87.00	5188.0
87.90	5253.0
91.00	441.0
92.00	3708.0
93.00	5673.0
94.00	14662.0
95.00	118736.0
96.00	8116.0
97.20	259.0
102.90	99.0
103.90	532.0
104.80	133.0
105.90	649.0
106.80	116.0
109.70	98.0
110.10	79.0
110.90	225.0
112.10	80.0
112.80	152.0
114.80	138.0
115.90	582.0
116.90	1054.0
118.00	499.0
118.90	658.0
122.10	80.0
123.90	80.0
125.10	104.0
125.90	68.0
127.90	435.0
128.80	249.0
129.90	466.0
130.90	195.0
132.90	164.0
133.90	83.0
134.90	218.0
136.10	98.0
136.80	155.0
141.00	1330.0
142.90	1321.0
144.00	176.0
145.00	319.0
146.10	108.0
147.00	136.0
147.90	283.0

Instrument :
MSVOA_W
ClientSampleId :
BFB536

149.00	87.0
149.90	113.0
151.90	83.0
152.90	135.0
153.80	81.0
154.80	238.0
155.90	67.0
157.00	212.0
157.90	57.0
158.90	131.0
161.00	81.0
163.10	59.0
169.50	57.0
171.00	220.0
172.00	1275.0
173.90	84944.0
175.00	6883.0
176.00	82816.0
177.00	5971.0
177.90	129.0
191.00	144.0
192.90	172.0
207.10	81.0
249.00	78.0
265.10	122.0
281.00	1057.0
282.00	354.0
283.10	224.0

Instrument :
MSVOA_W
ClientSampleId :
BFB536

m/z	Abundance
35.10	105.0
36.00	1177.0
37.00	5364.0
38.00	5075.0
39.00	1880.0
39.90	309.0
41.20	82.0
43.00	124.0
44.00	807.0
45.00	1008.0
46.10	138.0
47.00	1188.0
48.00	742.0
49.00	4513.0
50.00	19288.0
51.00	5942.0
52.00	296.0
53.00	90.0
54.20	90.0
55.00	368.0
56.00	1653.0
57.00	3162.0
58.10	203.0
59.20	58.0
60.00	1140.0
61.00	5257.0
62.00	4949.0
63.00	4218.0
64.00	564.0
65.00	594.0
66.00	98.0
67.00	236.0
68.00	9708.0
69.00	10782.0
70.00	756.0
72.00	480.0
73.00	4225.0
74.00	17240.0
75.00	48376.0
76.00	4348.0
76.90	691.0
78.00	566.0
78.90	3415.0
80.00	1049.0
80.90	3685.0
81.90	778.0
83.00	135.0
85.80	182.0
86.90	3850.0
88.00	3658.0
90.90	421.0
92.00	2839.0
93.00	4521.0
94.00	11479.0
95.00	93440.0
96.00	6300.0
96.90	213.0
102.80	81.0
103.90	479.0
104.90	194.0
105.90	533.0
106.80	96.0
109.90	88.0
111.00	124.0
111.90	70.0
112.80	81.0
114.90	87.0
116.00	348.0
116.90	645.0
117.90	367.0
118.90	494.0
124.90	77.0
126.30	79.0
127.90	340.0
128.80	204.0
129.90	367.0
131.00	137.0
132.90	92.0
133.90	67.0
134.90	234.0
136.20	69.0
136.90	198.0
139.80	88.0
140.90	1093.0
141.90	153.0
143.00	1246.0
143.90	107.0
144.90	222.0
146.00	119.0
147.00	104.0
148.00	177.0
149.00	74.0

Instrument :
MSVOA_W
ClientSampleId :
BFB536

149.80	111.0
151.90	54.0
153.00	58.0
155.00	201.0
155.90	77.0
156.90	113.0
159.00	146.0
160.90	79.0
169.40	77.0
170.50	125.0
171.00	120.0
171.90	836.0
174.00	71168.0
175.00	5230.0
175.90	69344.0
176.90	4635.0
178.00	168.0
191.00	88.0
192.80	73.0
193.10	70.0
248.90	83.0
265.00	79.0
281.20	676.0
282.20	261.0
283.00	121.0

Instrument :
MSVOA_W
ClientSampleId :
BFB536

m/z	Abundance
35.10	80.0
35.80	169.0
36.70	61.0
37.00	71.0
37.90	81.0
40.00	289.0
40.70	61.0
42.30	61.0
44.10	184.0
44.90	76.0
51.20	57.0
56.70	55.0
90.10	55.0
104.10	54.0

Instrument :
MSVOA_W
ClientSampleId :
BFB536