

Data Path : Z:\VOASRV\HPCHEM1\MSVOA W\DATA\VW080218\
 Data File : VW004420.D
 Acq On : 03 Aug 2018 01:56
 Operator : SY/AP
 Sample : J4261-13
 Misc : 4.07G/10ML/MSVOA W/SOIL
 ALS Vial : 1 Sample Multiplier: 1

Instrument :
 MSVOA_W
 ClientSampleId :
 E5F98

Quant Time: Aug 03 05:35:03 2018
 Quant Method : Z:\VOASRV\HPCHEM1\MSVOA_W\METHOD\SOM2WLM080218S.M
 Quant Title : VOC Analysis
 QLast Update : Fri Aug 03 05:29:00 2018
 Response via : Initial Calibration

Internal Standards	R.T.	QIon	Response	Conc	Units	Dev(Min)
1) 1,4-Difluorobenzene	8.85	114	770346	25.00	ug/L	0.00
28) Chlorobenzene-d5	11.63	117	658755	25.00	ug/L	0.00
60) 1,4-Dichlorobenzene-d4	13.57	152	179216	25.00	ug/L	0.00

System Monitoring Compounds

4) Vinyl Chloride-d3	2.36	65	341148	35.60	ug/L	0.00
Spiked Amount	25.000	Range	30 - 150	Recovery	=	142.40%
7) Chloroethane-d5	2.89	69	272107	33.76	ug/L	0.00
Spiked Amount	25.000	Range	30 - 150	Recovery	=	135.04%
10) 1,1-Dichloroethene-d2	4.01	63	452305	23.25	ug/L	0.00
Spiked Amount	25.000	Range	45 - 110	Recovery	=	93.00%
20) 2-Butanone-d5	7.09	46	184275	43.62	ug/L	0.00
Spiked Amount	50.000	Range	20 - 135	Recovery	=	87.24%
24) Chloroform-d	7.65	84	604420	28.98	ug/L	0.00
Spiked Amount	25.000	Range	40 - 150	Recovery	=	115.92%
26) 1,2-Dichloroethane-d4	8.31	65	338271	29.09	ug/L	0.00
Spiked Amount	25.000	Range	70 - 130	Recovery	=	116.36%
29) Benzene-d6	8.28	84	1141367	32.57	ug/L	0.00
Spiked Amount	25.000	Range	20 - 135	Recovery	=	130.28%
33) 1,2-Dichloropropane-d6	9.28	67	377552	32.96	ug/L	0.00
Spiked Amount	25.000	Range	70 - 120	Recovery	=	131.84%#
37) Toluene-d8	10.33	98	888981	28.77	ug/L	0.00
Spiked Amount	25.000	Range	30 - 130	Recovery	=	115.08%
38) trans-1,3-Dichloropropene-	10.58	79	112931	23.98	ug/L	0.00
Spiked Amount	25.000	Range	30 - 135	Recovery	=	95.92%
39) 2-Hexanone-d5	10.93	63	133569	47.90	ug/L	0.00
Spiked Amount	50.000	Range	20 - 135	Recovery	=	95.80%
48) 1,1,2,2-Tetrachloroethane-	12.70	84	300103	24.16	ug/L	0.00
Spiked Amount	25.000	Range	45 - 120	Recovery	=	96.64%
61) 1,2-Dichlorobenzene-d4	13.86	152	191597	28.46	ug/L	0.00
Spiked Amount	25.000	Range	75 - 120	Recovery	=	113.84%

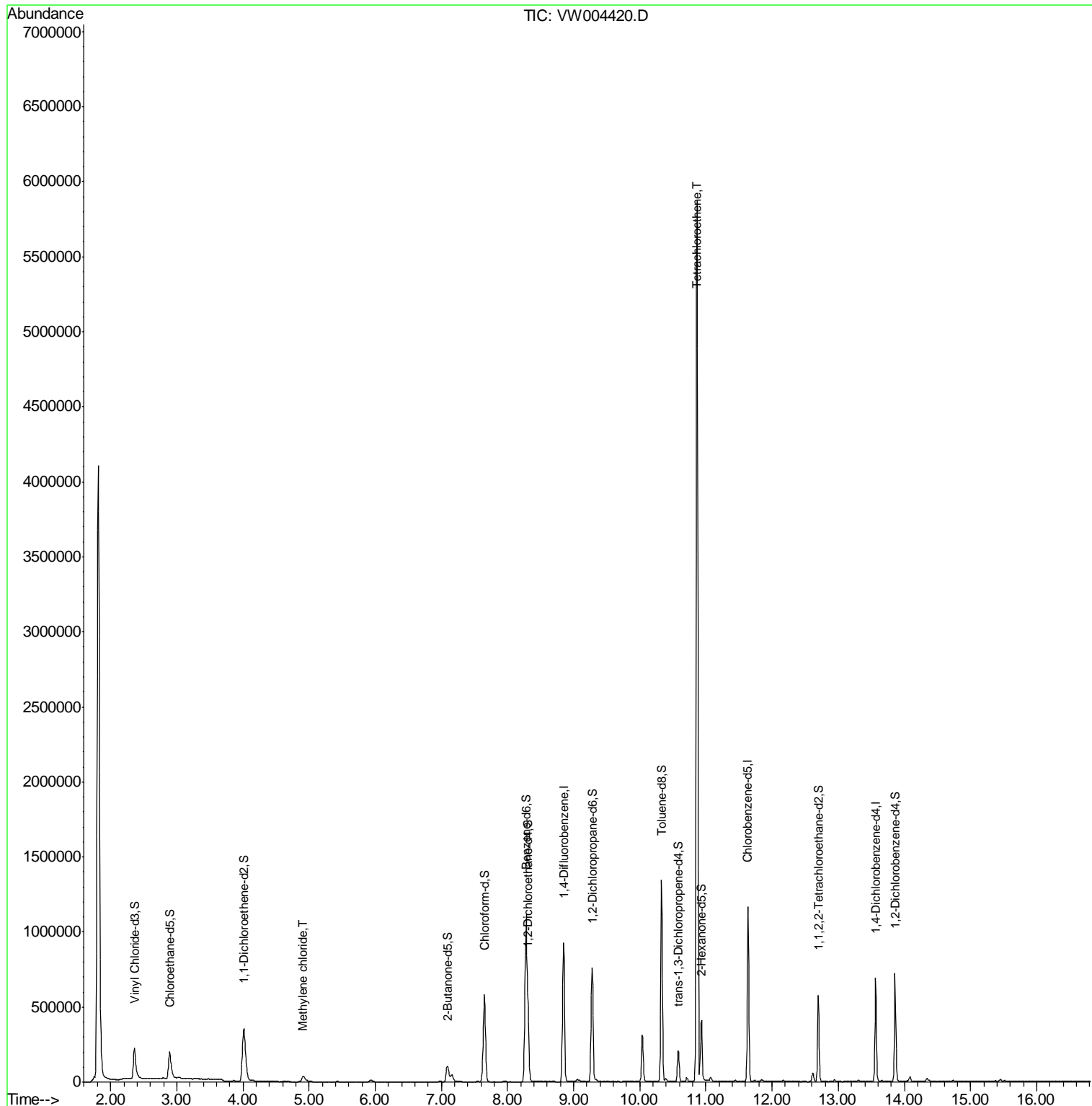
Target Compounds					Ovalue
16) Methylene chloride	4.92	84	33557	2.193	ug/L 97
47) Tetrachloroethene	10.87	164	1327289	164.203	ug/L 98

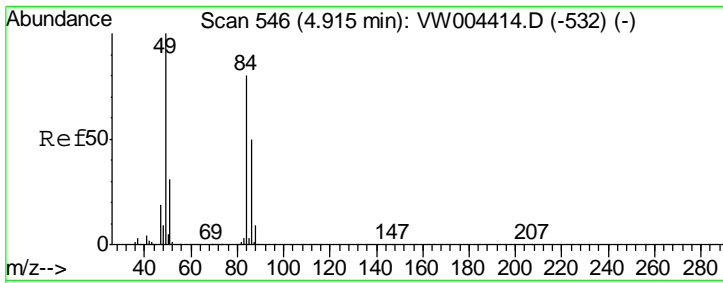
(#) = qualifier out of range (m) = manual integration (+) = signals summed

Data Path : Z:\VOASRV\HPCHEM1\MSVOA W\DATA\VW080218\
 Data File : VW004420.D
 Acq On : 03 Aug 2018 01:56
 Operator : SY/AP
 Sample : J4261-13
 Misc : 4.07G/10ML/MSVOA W/SOIL
 ALS Vial : 1 Sample Multiplier: 1

Instrument :
 MSVOA_W
 ClientSampleID :
 E5F98

Quant Time: Aug 03 05:35:03 2018
 Quant Method : Z:\VOASRV\HPCHEM1\MSVOA_W\METHOD\SOM2WLM080218S.M
 Quant Title : VOC Analysis
 QLast Update : Fri Aug 03 05:29:00 2018
 Response via : Initial Calibration

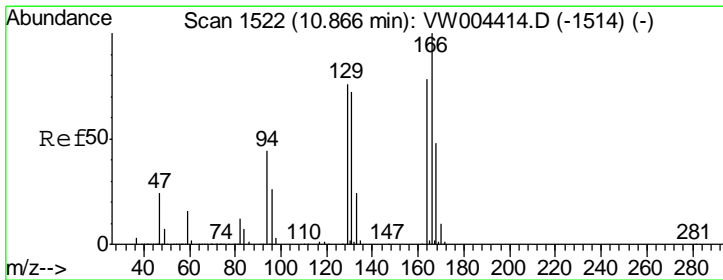
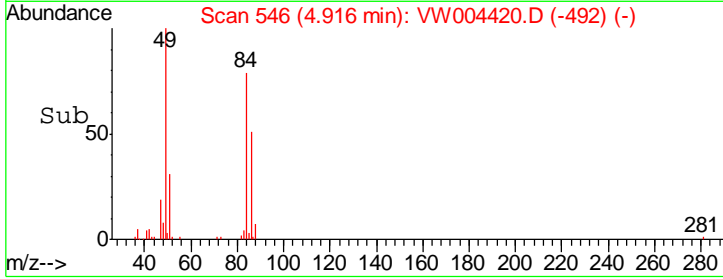
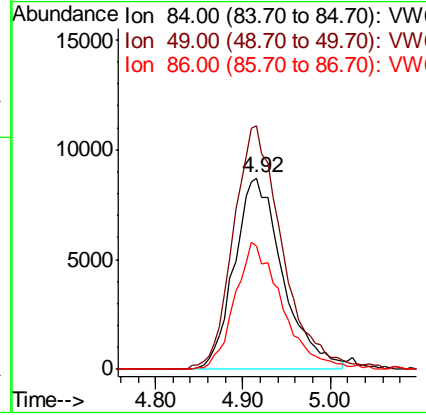
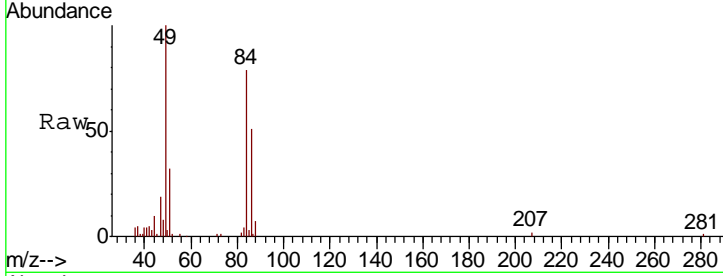




#16
 Methylene chloride
 Concen: 2.193 ug/L
 RT: 4.92 min Scan# 546
 Delta R.T. 0.00 min
 Lab File: VW004420.D
 Acq: 03 Aug 2018 01:56

Instrument :
 MSVOA_W
 ClientSampled :
 E5F98

Tgt Ion	Resp	Lower	Upper
84	33557		
84	100		
49	127.0	86.0	159.6
86	64.4	43.5	80.9



#47
 Tetrachloroethene
 Concen: 164.203 ug/L
 RT: 10.87 min Scan# 1522
 Delta R.T. 0.00 min
 Lab File: VW004420.D
 Acq: 03 Aug 2018 01:56

Tgt Ion	Resp	Lower	Upper
164	1327289		
164	100		
129	96.1	65.4	121.4
131	92.4	63.8	118.6
166	128.4	88.1	163.5

