

Data Path : Z:\VOASRV\HPCHEM1\MSVOA_W\DATA\VW080218\
 Data File : VW004459.D
 Acq On : 03 Aug 2018 20:40
 Operator : SY/AP
 Sample : J4299-09
 Misc : 7.13G/10ML/MSVOA_W/SOIL
 ALS Vial : 1 Sample Multiplier: 1

Instrument :
 MSVOA_W
 ClientSampleId :
 C0AE7

Integration Parameters: LSCINT.P

Integrator: RTE
 Smoothing : OFF
 Sampling : 1
 Start Thrs: 0.2
 Stop Thrs : 0

Filtering: 5
 Min Area: 0 % of largest Peak
 Max Peaks: 100
 Peak Location: TOP

If leading or trailing edge < 100 prefer < Baseline drop else tangent >
 Peak separation: 5

Method : Z:\VOASRV\HPCHEM1\MSVOA_W\METHOD\SOM2WLM080218S.M
 Title : VOC Analysis

Signal : TIC

peak #	R.T. min	first scan	max scan	last scan	PK TY	peak height	corr. area	corr. % max.	% of total
1	1.751	16	27	28	rBV	30716	63474	0.87%	0.155%
2	1.812	28	37	59	rVB	3133733	7328789	100.00%	17.925%
3	2.361	120	127	146	rVB	180323	475040	6.48%	1.162%
4	2.891	208	214	229	rVB	154755	425689	5.81%	1.041%
5	3.849	364	371	383	rVB9	7266	24311	0.33%	0.059%
6	4.013	386	398	412	rVV	338578	1192405	16.27%	2.916%
7	4.141	413	419	436	rVB	65503	210660	2.87%	0.515%
8	4.348	451	453	456	rBV3	798	980	0.01%	0.002%
9	4.665	502	505	506	rBV3	1006	1027	0.01%	0.003%
10	4.751	517	519	522	rBV3	886	1292	0.02%	0.003%
11	4.915	534	546	547	rBV2	16879	39858	0.54%	0.097%
12	5.300	607	609	612	rBV3	915	1307	0.02%	0.003%
13	5.415	625	628	629	rBV2	1712	1693	0.02%	0.004%
14	5.617	658	661	663	rBV2	984	1038	0.01%	0.003%
15	5.927	704	712	724	rVB3	12712	36388	0.50%	0.089%
16	6.086	735	738	739	rBV2	1266	1139	0.02%	0.003%
17	6.202	753	757	758	rBV3	1591	1560	0.02%	0.004%
18	6.305	773	774	779	rVB4	1408	1382	0.02%	0.003%
19	6.397	786	789	791	rBV4	869	1100	0.02%	0.003%
20	6.513	805	808	809	rBV2	836	946	0.01%	0.002%
21	6.854	859	864	865	rBV4	1214	1813	0.02%	0.004%
22	6.970	879	883	893	rVB8	3683	10613	0.14%	0.026%
23	7.092	893	903	912	rBV	112795	331086	4.52%	0.810%
24	7.403	953	954	956	rBV2	882	917	0.01%	0.002%
25	7.513	968	972	974	rBV4	1045	1275	0.02%	0.003%
26	7.537	974	976	978	rBV3	1301	1649	0.02%	0.004%
27	7.647	984	994	1010	rVB	597206	1474296	20.12%	3.606%
28	7.933	1034	1041	1043	rBV7	3401	7625	0.10%	0.019%
29	8.031	1052	1057	1063	rVB8	1596	3977	0.05%	0.010%
30	8.153	1072	1077	1084	rVB6	3600	7892	0.11%	0.019%
31	8.281	1084	1098	1115	rBV2	1176322	3491473	47.64%	8.540%
32	8.470	1127	1129	1130	rBV2	2837	1667	0.02%	0.004%
33	8.579	1145	1147	1153	rVB6	1840	2160	0.03%	0.005%
34	8.701	1160	1167	1172	rBV7	5352	11261	0.15%	0.028%

Data Path : Z:\VOASRV\HPCHEM1\MSVOA_W\DATA\VW080218\
 Data File : VW004459.D
 Acq On : 03 Aug 2018 20:40
 Operator : SY/AP
 Sample : J4299-09
 Misc : 7.13G/10ML/MSVOA_W/SOIL
 ALS Vial : 1 Sample Multiplier: 1

Instrument :
 MSVOA_W
 ClientSampleId :
 C0AE7

Integration Parameters: LSCINT.P

Integrator: RTE
 Smoothing : OFF
 Sampling : 1
 Start Thrs: 0.2
 Stop Thrs : 0

Filtering: 5
 Min Area: 0 % of largest Peak
 Max Peaks: 100
 Peak Location: TOP

If leading or trailing edge < 100 prefer < Baseline drop else tangent >
 Peak separation: 5

Method : Z:\VOASRV\HPCHEM1\MSVOA_W\METHOD\SOM2WLM080218S.M
 Title : VOC Analysis

35	8.848	1181	1191	1207	rBV	1112467	2181343	29.76%	5.335%
36	9.073	1223	1228	1229	rBV4	3693	4590	0.06%	0.011%
37	9.281	1252	1262	1279	rBV	804961	1659755	22.65%	4.059%
38	9.524	1298	1302	1306	rVB6	1540	2497	0.03%	0.006%
39	9.665	1319	1325	1330	rBV6	3491	6835	0.09%	0.017%
40	9.762	1337	1341	1346	rVB7	2850	4625	0.06%	0.011%
41	9.860	1353	1357	1358	rBV3	948	1043	0.01%	0.003%
42	9.896	1360	1363	1368	rVB4	2142	3387	0.05%	0.008%
43	9.963	1370	1374	1376	rBV5	1876	2166	0.03%	0.005%
44	9.982	1376	1377	1379	rBV2	896	891	0.01%	0.002%
45	10.036	1379	1386	1394	rBV	366207	658414	8.98%	1.610%
46	10.329	1425	1434	1440	rBV	1533553	2661120	36.31%	6.509%
47	10.396	1440	1445	1450	rVB	53390	97893	1.34%	0.239%
48	10.512	1460	1464	1468	rVB6	5300	8764	0.12%	0.021%
49	10.579	1468	1475	1485	rBV	257780	454374	6.20%	1.111%
50	10.713	1491	1497	1502	rBV4	4002	6942	0.09%	0.017%
51	10.853	1515	1520	1526	rBV7	4548	7951	0.11%	0.019%
52	10.933	1526	1533	1547	rBV	450367	806780	11.01%	1.973%
53	11.177	1571	1573	1578	rVB6	2202	2551	0.03%	0.006%
54	11.244	1582	1584	1588	rVB5	1165	1113	0.02%	0.003%
55	11.341	1597	1600	1605	rVB6	1250	2106	0.03%	0.005%
56	11.414	1605	1612	1619	rVB8	3923	9666	0.13%	0.024%
57	11.518	1627	1629	1632	rVB4	1267	1298	0.02%	0.003%
58	11.634	1640	1648	1656	rBV	1641808	2784503	37.99%	6.810%
59	11.737	1659	1665	1671	rVB2	10218	19676	0.27%	0.048%
60	11.841	1674	1682	1689	rBV	31400	59518	0.81%	0.146%
61	12.182	1731	1738	1745	rVB3	18667	39508	0.54%	0.097%
62	12.256	1745	1750	1754	rBV6	1414	3086	0.04%	0.008%
63	12.335	1759	1763	1767	rBV2	7772	11730	0.16%	0.029%
64	12.371	1767	1769	1775	rVB7	3503	4871	0.07%	0.012%
65	12.481	1775	1787	1799	rBV	1300778	2191971	29.91%	5.361%
66	12.615	1805	1809	1814	rVB	19704	32771	0.45%	0.080%
67	12.695	1814	1822	1836	rBV2	895927	1837312	25.07%	4.494%
68	12.871	1847	1851	1855	rBV4	6043	11000	0.15%	0.027%
69	12.963	1859	1866	1871	rBV	79332	134537	1.84%	0.329%
70	13.036	1871	1878	1890	rBV	1701495	2731216	37.27%	6.680%
71	13.164	1895	1899	1903	rVB4	8363	12793	0.17%	0.031%

Data Path : Z:\VOASRV\HPCHEM1\MSVOA_W\DATA\VW080218\
 Data File : VW004459.D
 Acq On : 03 Aug 2018 20:40
 Operator : SY/AP
 Sample : J4299-09
 Misc : 7.13G/10ML/MSVOA_W/SOIL
 ALS Vial : 1 Sample Multiplier: 1

Instrument :
 MSVOA_W
 ClientSampleId :
 C0AE7

Integration Parameters: LSCINT.P

Integrator: RTE
 Smoothing : OFF Filtering: 5
 Sampling : 1 Min Area: 0 % of largest Peak
 Start Thrs: 0.2 Max Peaks: 100
 Stop Thrs : 0 Peak Location: TOP

If leading or trailing edge < 100 prefer < Baseline drop else tangent >
 Peak separation: 5

Method : Z:\VOASRV\HPCHEM1\MSVOA_W\METHOD\SOM2WLM080218S.M
 Title : VOC Analysis

72	13.219	1904	1908	1910	rBV2	18858	27502	0.38%	0.067%
73	13.280	1910	1918	1928	rVB	617745	1065895	14.54%	2.607%
74	13.390	1932	1936	1937	rBV2	17466	23773	0.32%	0.058%
75	13.475	1945	1950	1953	rBV	244865	395404	5.40%	0.967%
76	13.566	1959	1965	1971	rVB	1853674	2929305	39.97%	7.165%
77	13.627	1972	1975	1985	rVB7	27783	54512	0.74%	0.133%
78	13.725	1986	1991	1995	rBV3	10743	16283	0.22%	0.040%
79	13.761	1995	1997	2002	rVB6	4056	5714	0.08%	0.014%
80	13.859	2006	2013	2026	rBV	1533891	2497071	34.07%	6.107%
81	13.969	2026	2031	2034	rBV5	16775	28582	0.39%	0.070%
82	14.011	2034	2038	2044	rVB3	33216	52292	0.71%	0.128%
83	14.078	2045	2049	2058	rVB3	15558	31418	0.43%	0.077%
84	14.170	2058	2064	2068	rBV7	4644	8349	0.11%	0.020%
85	14.334	2088	2091	2098	rVB7	5895	9779	0.13%	0.024%
86	14.438	2106	2108	2111	rBV3	2602	2654	0.04%	0.006%
87	14.511	2117	2120	2121	rBV2	1716	1941	0.03%	0.005%
88	14.591	2132	2133	2138	rBV5	973	1424	0.02%	0.003%
89	14.682	2145	2148	2149	rBV3	1275	1377	0.02%	0.003%
90	14.737	2155	2157	2163	rVB6	3734	4769	0.07%	0.012%
91	14.804	2163	2168	2171	rBV7	2580	5555	0.08%	0.014%
92	15.084	2209	2214	2219	rVB2	17978	27641	0.38%	0.068%
93	15.243	2235	2240	2247	rBV9	6673	13020	0.18%	0.032%
94	15.316	2247	2252	2258	rVV	21493	35532	0.48%	0.087%
95	15.432	2267	2271	2277	rVB3	6569	10495	0.14%	0.026%
96	15.511	2280	2284	2288	rBV	6567	10585	0.14%	0.026%
97	15.706	2314	2316	2319	rBV4	1984	2253	0.03%	0.006%
98	15.816	2331	2334	2335	rBV3	2082	2030	0.03%	0.005%
99	15.956	2354	2357	2359	rBV4	1280	1663	0.02%	0.004%
100	16.249	2403	2405	2407	rBV3	1285	911	0.01%	0.002%

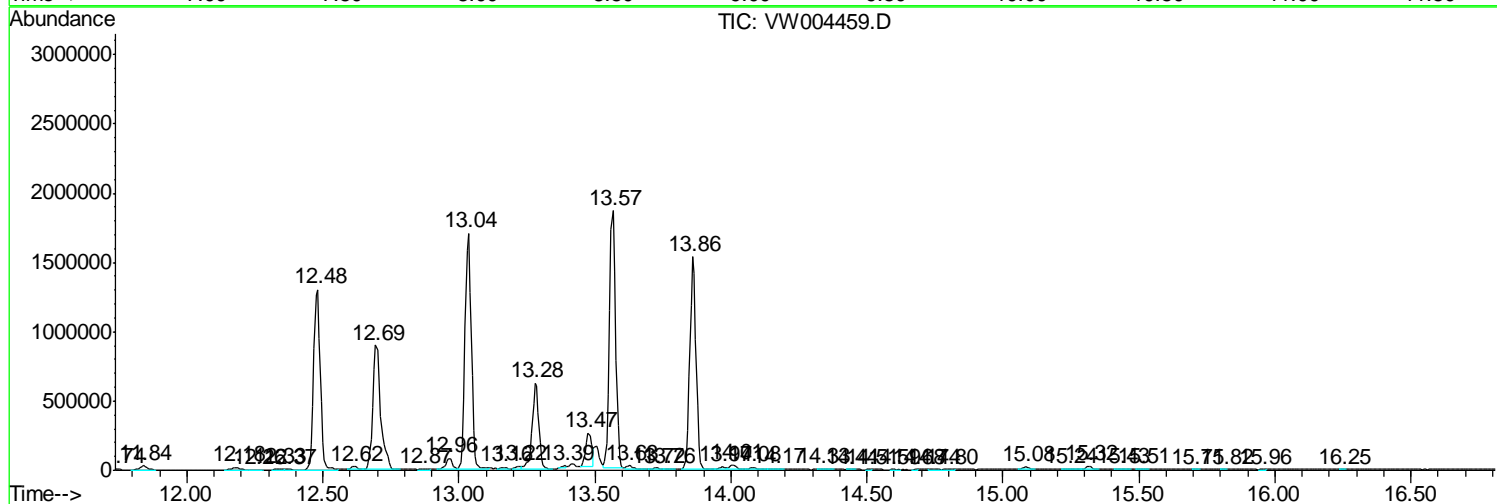
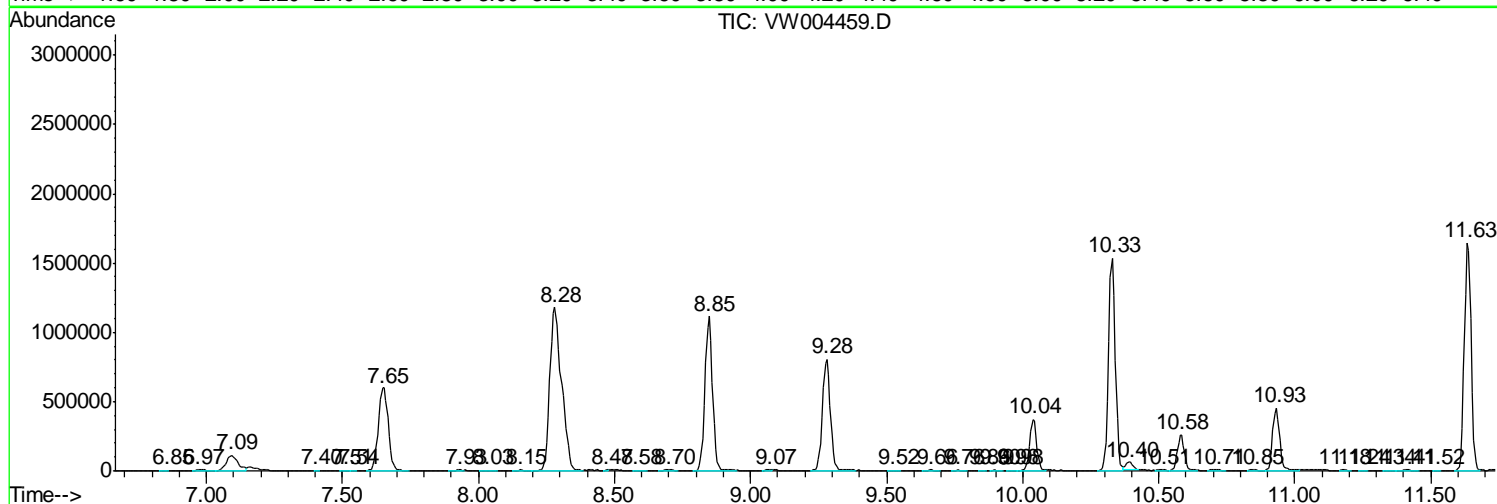
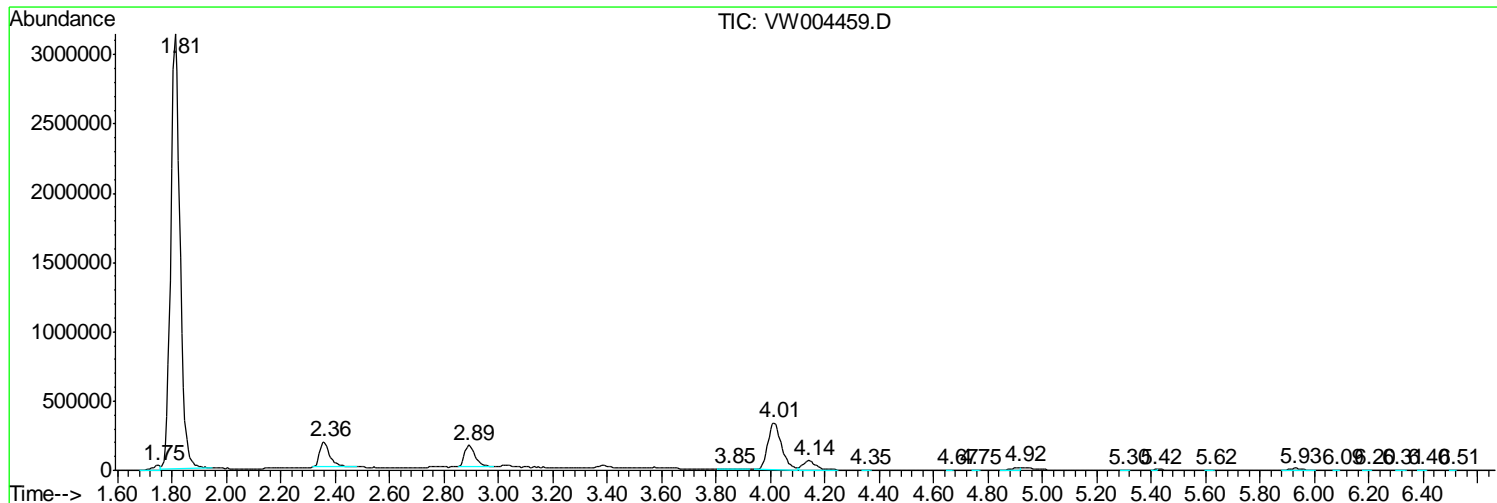
Sum of corrected areas: 40886107

Data Path : Z:\VOASRV\HPCHEM1\MSVOA_W\DATA\VW080218\
 Data File : VW004459.D
 Acq On : 03 Aug 2018 20:40
 Operator : SY/AP
 Sample : J4299-09
 Misc : 7.13G/10ML/MSVOA_W/SOIL
 ALS Vial : 1 Sample Multiplier: 1

Instrument :
 MSVOA_W
 ClientSampled :
 COAE7

Quant Method : Z:\VOASRV\HPCHEM1\MSVOA_W\METHOD\SOM2WLM080218S.M
 Quant Title : VOC Analysis

TIC Library : C:\DATABASE\NIST11.L
 TIC Integration Parameters: LSCINT.P



Data Path : Z:\VOASRV\HPCHEM1\MSVOA_W\DATA\VW080218\
 Data File : VW004459.D
 Acq On : 03 Aug 2018 20:40
 Operator : SY/AP
 Sample : J4299-09
 Misc : 7.13G/10ML/MSVOA_W/SOIL
 ALS Vial : 1 Sample Multiplier: 1

Instrument :
 MSVOA_W
 ClientSampleID :
 COAE7

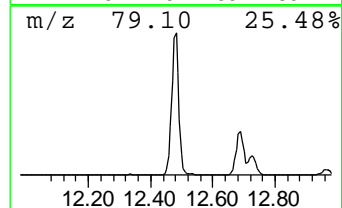
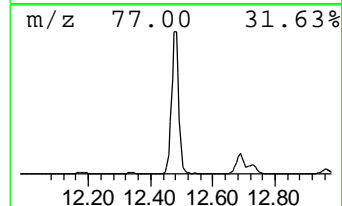
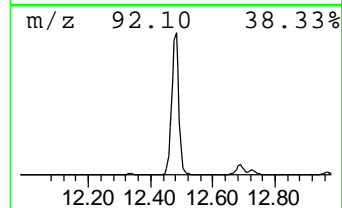
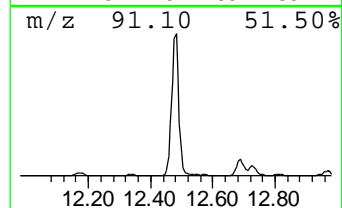
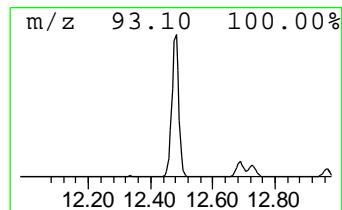
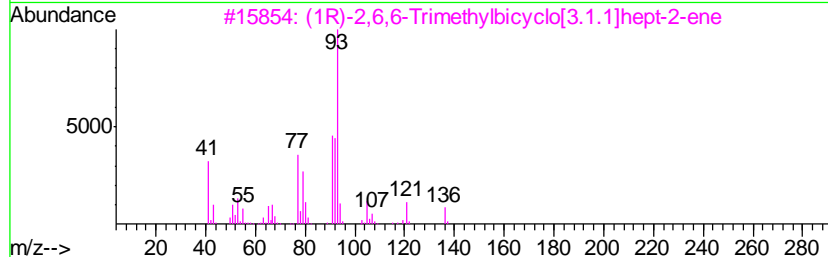
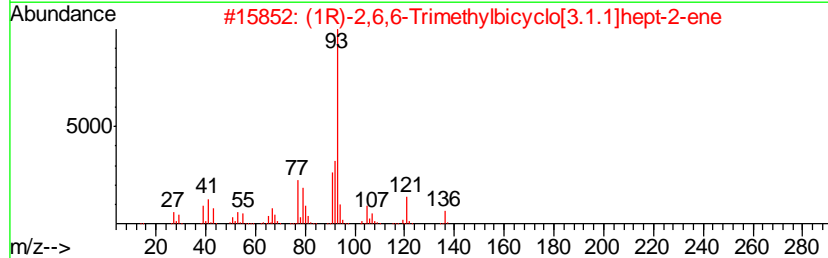
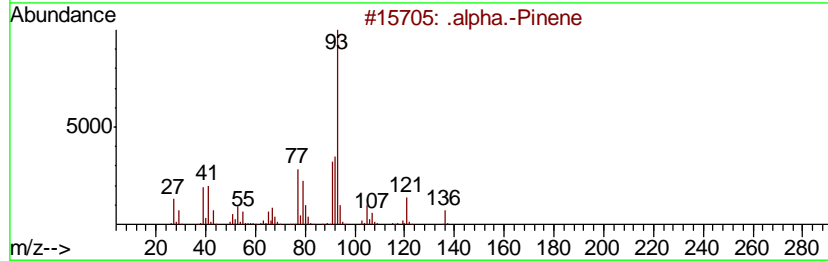
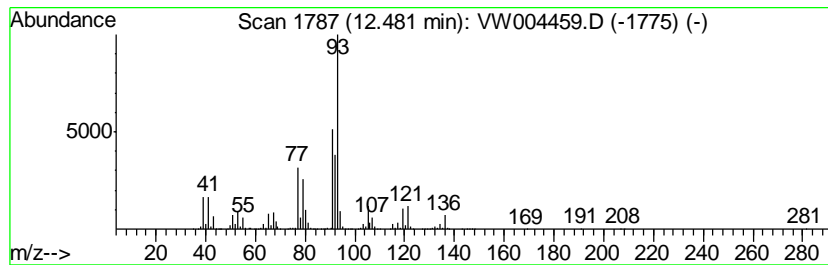
Quant Method : Z:\VOASRV\HPCHEM1\MSVOA_W\METHOD\SOM2WLM080218S.M
 Quant Title : VOC Analysis

TIC Library : C:\DATABASE\NIST11.L
 TIC Integration Parameters: LSCINT.P

 Peak Number 3 .alpha.-Pinene Concentration Rank 3

R.T.	EstConc	Area	Relative to ISTD	R.T.
12.48	19.68 ug/L	2191970	Chlorobenzene-d5	11.63

Hit#	of	Tentative ID	MW	MolForm	CAS#	Qual
1	5	.alpha.-Pinene	136	C10H16	000080-56-8	97
2		(1R)-2,6,6-Trimethylbicyclo[3.1....	136	C10H16	007785-70-8	94
3		(1R)-2,6,6-Trimethylbicyclo[3.1....	136	C10H16	007785-70-8	94
4		.alpha.-Pinene	136	C10H16	000080-56-8	93
5		Bicyclo[3.1.1]hept-2-ene, 3,6,6-...	136	C10H16	004889-83-2	91



Data Path : Z:\VOASRV\HPCHEM1\MSVOA_W\DATA\VW080218\
 Data File : VW004459.D
 Acq On : 03 Aug 2018 20:40
 Operator : SY/AP
 Sample : J4299-09
 Misc : 7.13G/10ML/MSVOA_W/SOIL
 ALS Vial : 1 Sample Multiplier: 1

Instrument :
 MSVOA_W
 ClientSampled :
 COAE7

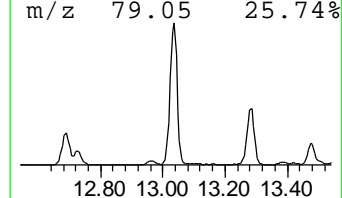
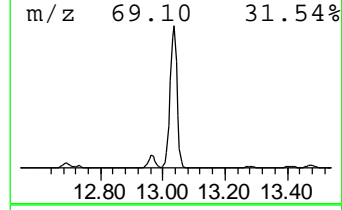
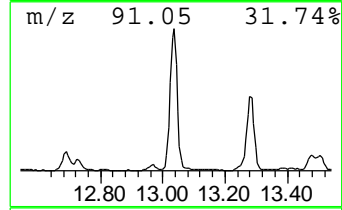
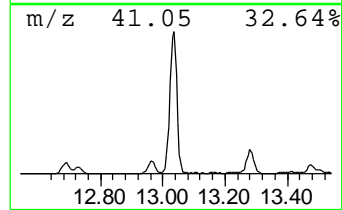
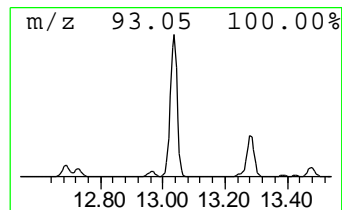
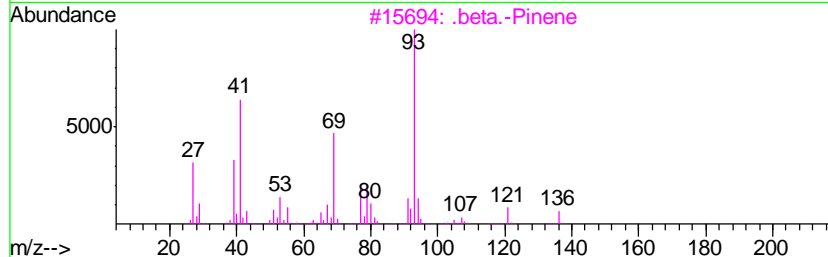
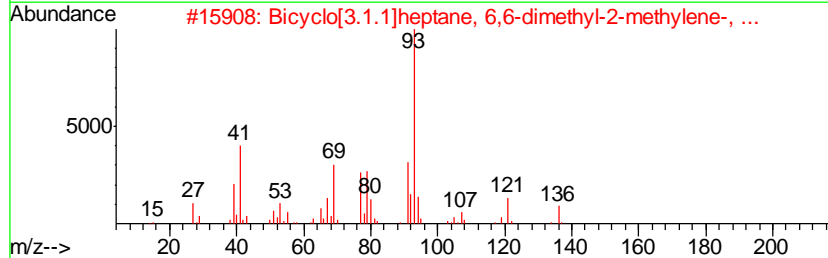
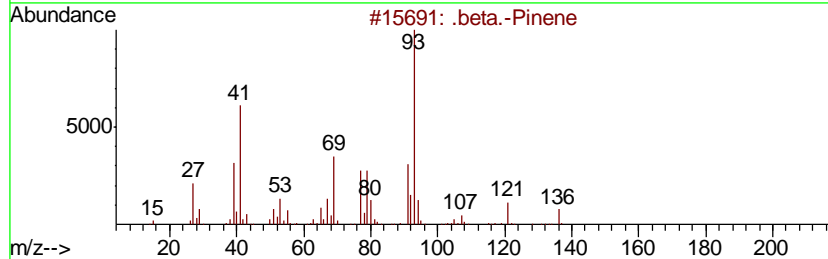
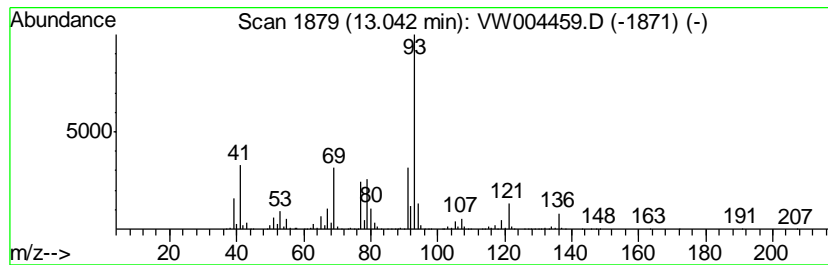
Quant Method : Z:\VOASRV\HPCHEM1\MSVOA_W\METHOD\SOM2WLM080218S.M
 Quant Title : VOC Analysis

TIC Library : C:\DATABASE\NIST11.L
 TIC Integration Parameters: LSCINT.P

 Peak Number 4 .beta.-Pinene Concentration Rank 2

R.T.	EstConc	Area	Relative to ISTD	R.T.
13.04	23.31 ug/L	2731220	1,4-Dichlorobenzene-d4	13.57

Hit#	of	Tentative ID	MW	MolForm	CAS#	Qual
1	5	.beta.-Pinene	136	C10H16	000127-91-3	97
2		Bicyclo[3.1.1]heptane, 6,6-dimet...	136	C10H16	018172-67-3	96
3		.beta.-Pinene	136	C10H16	000127-91-3	91
4		.beta.-Pinene	136	C10H16	000127-91-3	91
5		Cyclohexene, 4-methylene-1-(1-me...	136	C10H16	000099-84-3	91



Data Path : Z:\VOASRV\HPCHEM1\MSVOA_W\DATA\VW080218\
 Data File : VW004459.D
 Acq On : 03 Aug 2018 20:40
 Operator : SY/AP
 Sample : J4299-09
 Misc : 7.13G/10ML/MSVOA_W/SOIL
 ALS Vial : 1 Sample Multiplier: 1

Instrument :
 MSVOA_W
 ClientSampled :
 COAE7

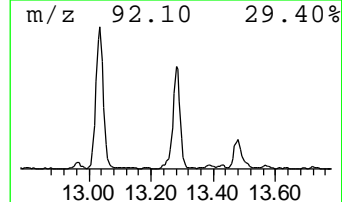
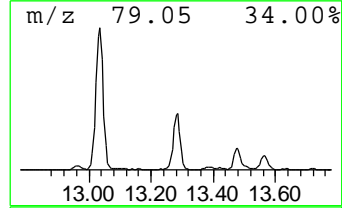
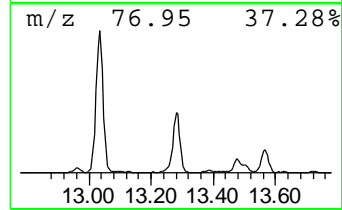
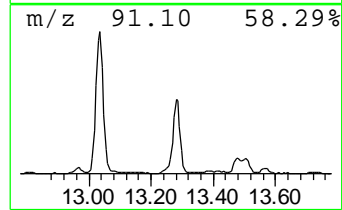
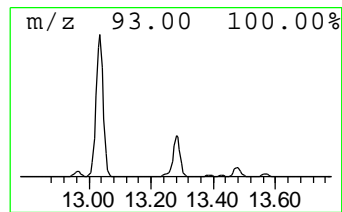
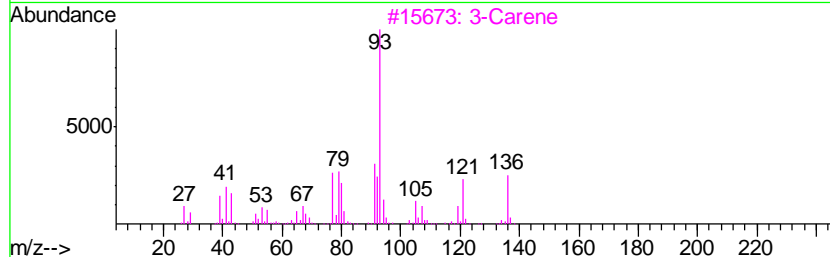
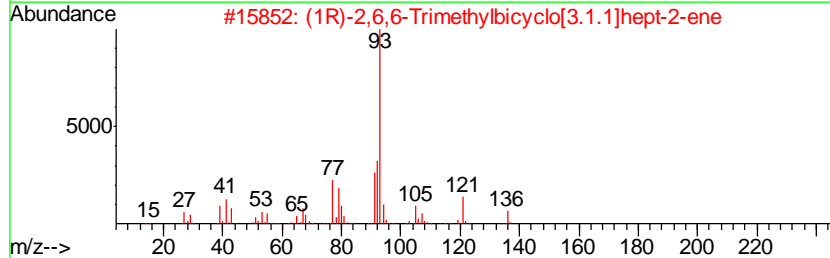
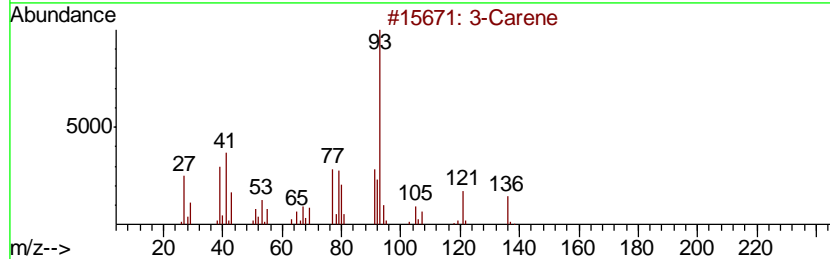
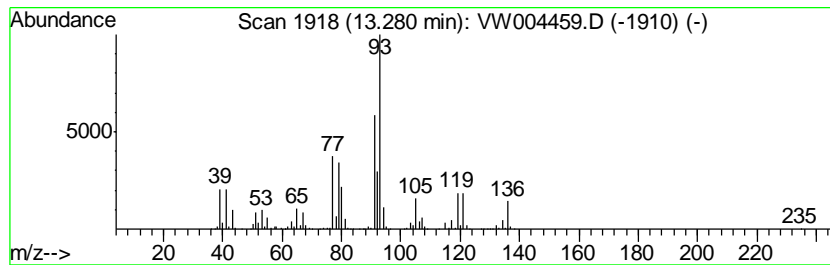
Quant Method : Z:\VOASRV\HPCHEM1\MSVOA_W\METHOD\SOM2WLM080218S.M
 Quant Title : VOC Analysis

TIC Library : C:\DATABASE\NIST11.L
 TIC Integration Parameters: LSCINT.P

 Peak Number 5 3-Carene Concentration Rank 4

R.T.	EstConc	Area	Relative to ISTD	R.T.
13.28	9.10 ug/L	1065900	1,4-Dichlorobenzene-d4	13.57

Hit#	of	Tentative ID	MW	MolForm	CAS#	Qual
1	5	3-Carene	136	C10H16	013466-78-9	93
2		(1R)-2,6,6-Trimethylbicyclo[3.1....	136	C10H16	007785-70-8	93
3		3-Carene	136	C10H16	013466-78-9	91
4		3-Carene	136	C10H16	013466-78-9	90
5		(1S)-2,6,6-Trimethylbicyclo[3.1....	136	C10H16	007785-26-4	90



Data Path : Z:\VOASRV\HPCHEM1\MSVOA_W\DATA\VW080218\
 Data File : VW004459.D
 Acq On : 03 Aug 2018 20:40
 Operator : SY/AP
 Sample : J4299-09
 Misc : 7.13G/10ML/MSVOA_W/SOIL
 ALS Vial : 1 Sample Multiplier: 1

Instrument :
 MSVOA_W
 ClientSampled :
 COAE7

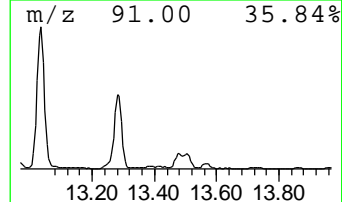
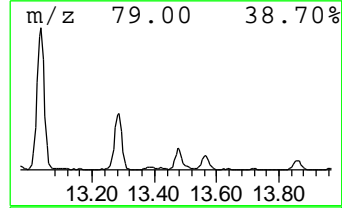
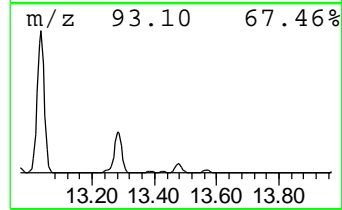
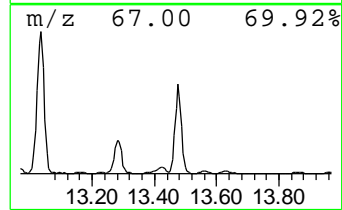
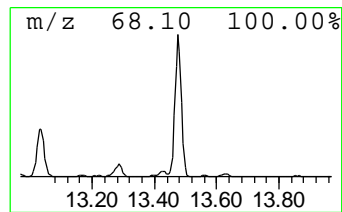
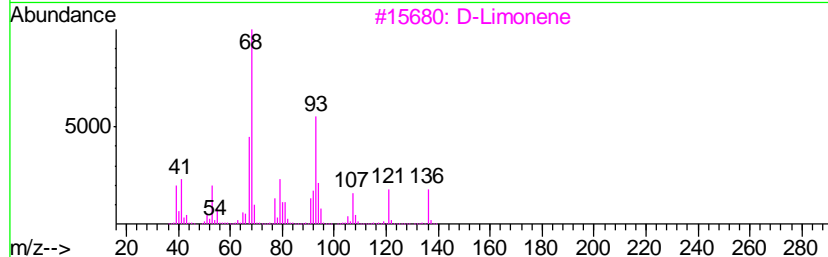
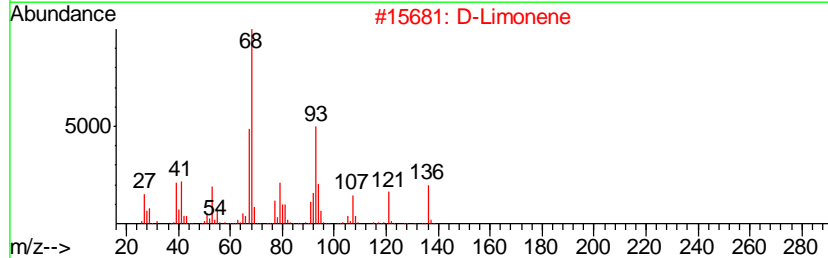
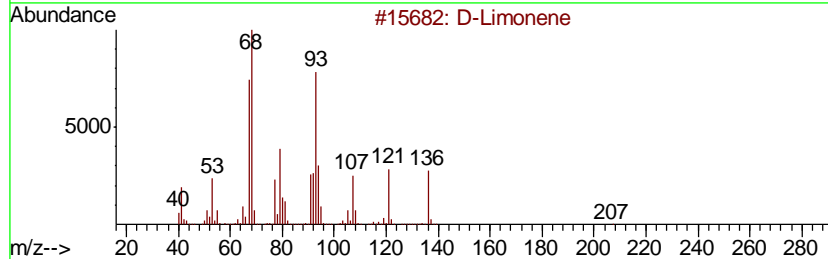
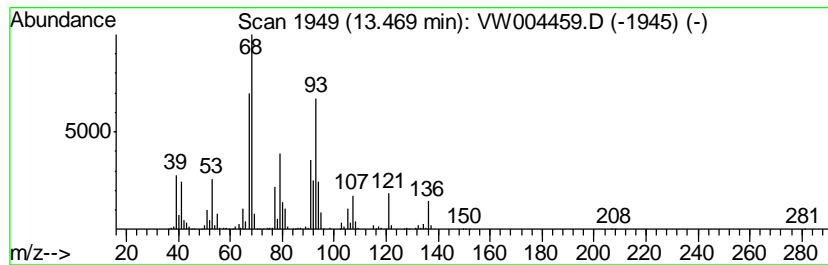
Quant Method : Z:\VOASRV\HPCHEM1\MSVOA_W\METHOD\SOM2WLM080218S.M
 Quant Title : VOC Analysis

TIC Library : C:\DATABASE\NIST11.L
 TIC Integration Parameters: LSCINT.P

 Peak Number 6 D-Limonene Concentration Rank 6

R.T.	EstConc	Area	Relative to ISTD	R.T.
13.47	3.37 ug/L	395404	1,4-Dichlorobenzene-d4	13.57

Hit#	of	Tentative ID	MW	MolForm	CAS#	Qual
1	5	D-Limonene	136	C10H16	005989-27-5	98
2		D-Limonene	136	C10H16	005989-27-5	93
3		D-Limonene	136	C10H16	005989-27-5	89
4		Cyclohexene, 1-methyl-4-(1-methy...	136	C10H16	005989-54-8	86
5		Limonene	136	C10H16	000138-86-3	83



Data Path : Z:\VOASRV\HPCHEM1\MSVOA_W\DATA\VW080218\
Data File : VW004459.D
Acq On : 03 Aug 2018 20:40
Operator : SY/AP
Sample : J4299-09
Misc : 7.13G/10ML/MSVOA_W/SOIL
ALS Vial : 1 Sample Multiplier: 1

Instrument :
MSVOA_W
ClientSampleId :
C0AE7

Quant Method : Z:\VOASRV\HPCHEM1\MSVOA_W\METHOD\SOM2WLM080218S.M
Quant Title : VOC Analysis

TIC Library : C:\DATABASE\NIST11.L
TIC Integration Parameters: LSCINT.P

TIC Top Hit name	RT	EstConc	Units	Response	--Internal Standard--			
					#	RT	Resp	Conc
.alpha.-Pinene	12.48	19.7	ug/L	2191970	2	11.63	2784500	25.0
.beta.-Pinene	13.04	23.3	ug/L	2731220	3	13.57	2929310	25.0
3-Carene	13.28	9.1	ug/L	1065900	3	13.57	2929310	25.0
D-Limonene	13.47	3.4	ug/L	395404	3	13.57	2929310	25.0