

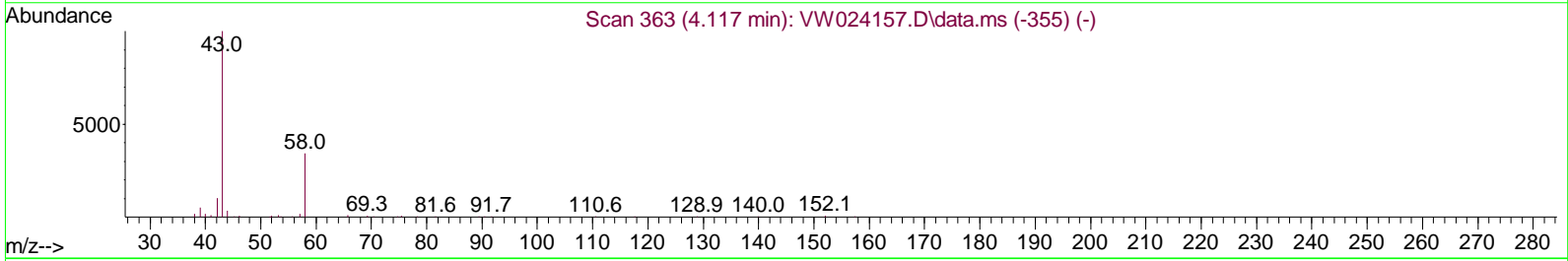
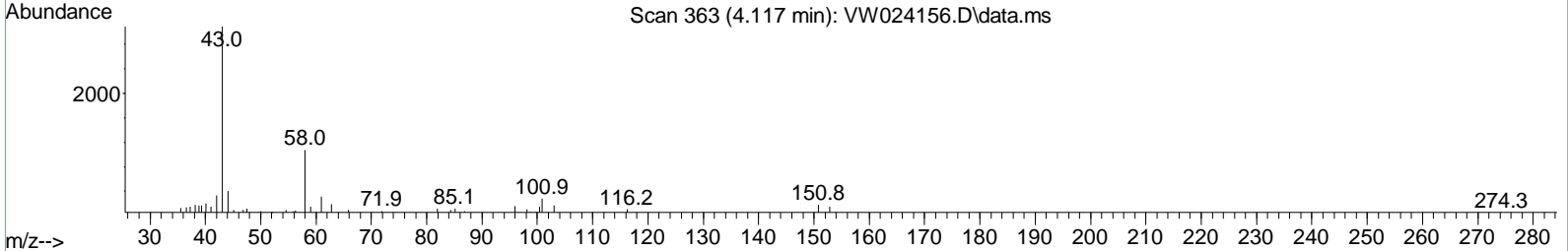
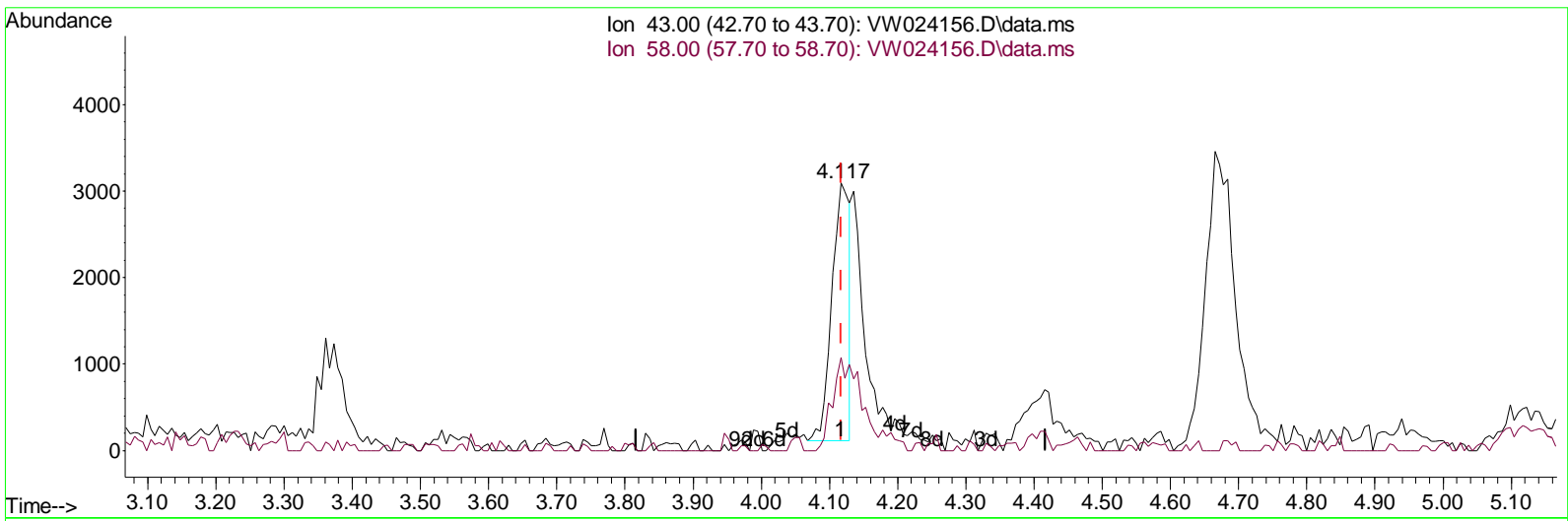
Data Path : Z:\voasrv\HPCHEM1\MSVOA_W\Data\VW080422\
 Data File : VW024156.D
 Acq On : 04 Aug 2022 09:46
 Operator : SY/VA
 Sample : VSTD00508
 Mi sc : 5.00g/10mL/MSVOA_W/SOIL
 ALS Vial : 4 Sample Multiplier: 1

Instrument :
 MSVOA_W
ClientSampleId :
 VSTD005408

Manual IntegrationsAPPROVED

Reviewed By :Semsettin Yesilyurt 08/07/2022
 Supervised By :Mahesh Dadoda 08/08/2022

Quant Time: Aug 05 00:36:43 2022
 Quant Method : Z:\voasrv\HPCHEM1\MSVOA_W\Method\SFAMLM080422SMA.M
 Quant Title : SFAM01.0
 QLast Update : Fri Aug 05 00:24:31 2022
 Response via : Initial Calibration



TIC: VW024156.D\data.ms

(13) Acetone (T)

4.117min (-0.000) 6.43 ug/L

response	5387	
Ion	Exp%	Act%
43.00	100.00	100.00
58.00	15.90	27.07
0.00	0.00	0.00
0.00	0.00	0.00

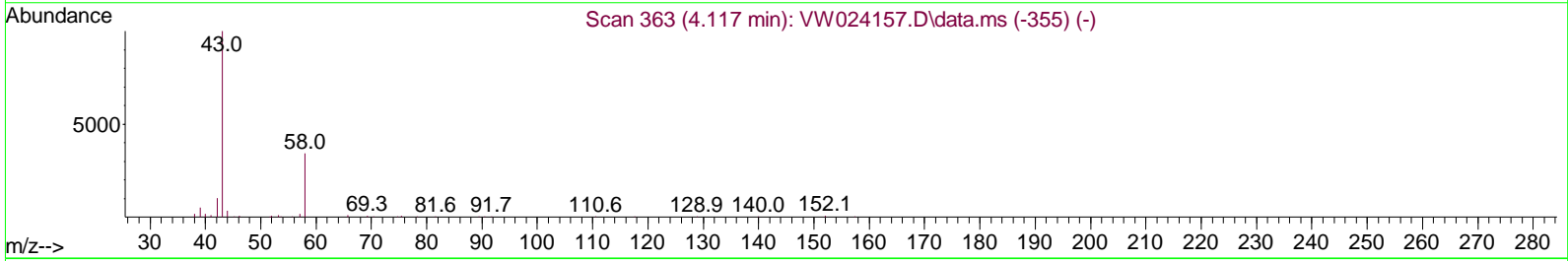
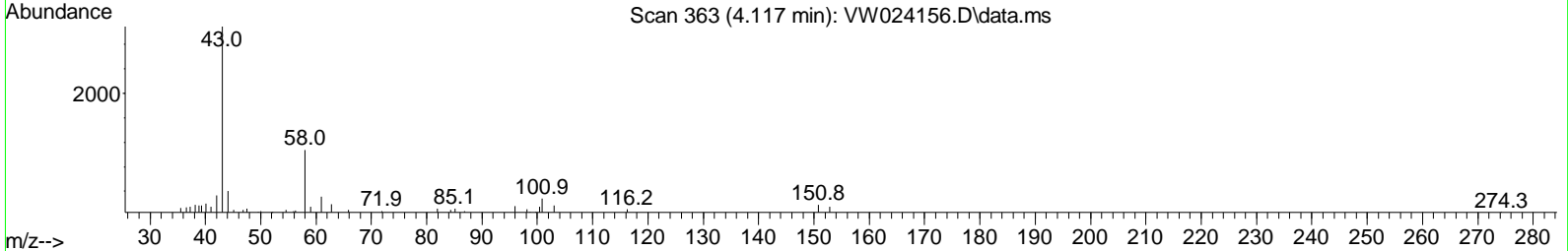
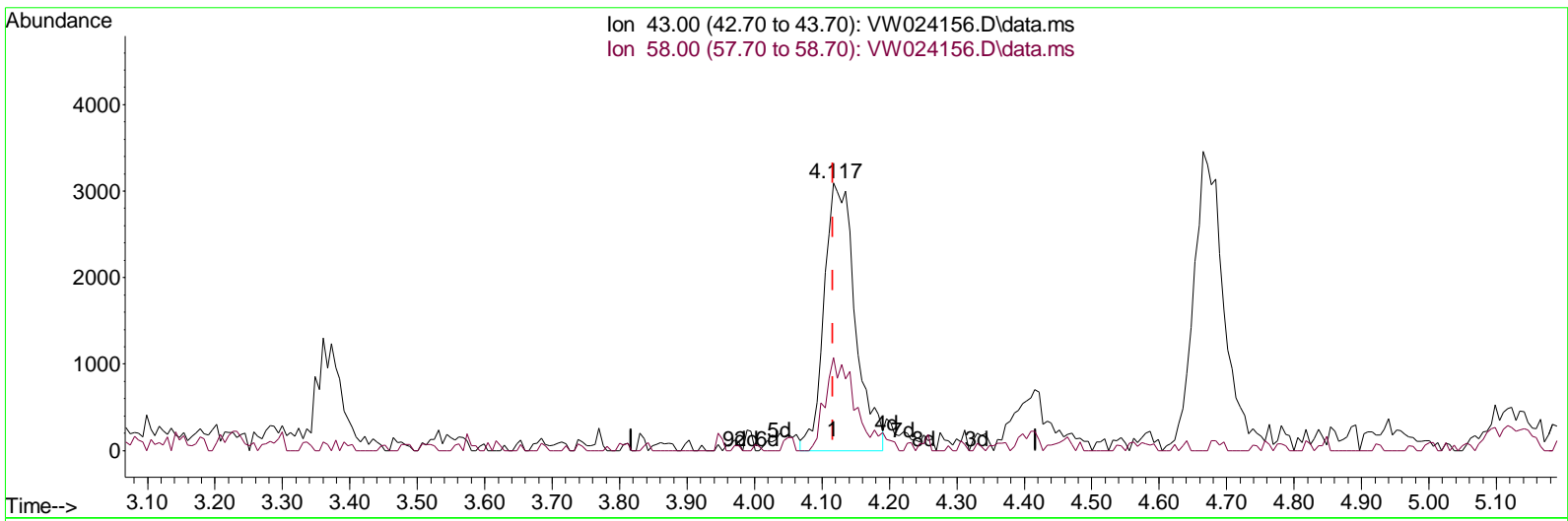
Data Path : Z:\voasrv\HPCHEM1\MSVOA_W\Data\VW080422\
 Data File : VW024156.D
 Acq On : 04 Aug 2022 09:46
 Operator : SY/VA
 Sample : VSTD00508
 Mi sc : 5.00g/10mL/MSVOA_W/SOIL
 ALS Vial : 4 Sample Multiplier: 1

Instrument :
 MSVOA_W
ClientSampleId :
 VSTD005408

Manual Integrations APPROVED

Reviewed By : Semsettin Yesilyurt 08/07/2022
 Supervised By : Mahesh Dadoda 08/08/2022

Quant Time: Aug 05 00:36:43 2022
 Quant Method : Z:\voasrv\HPCHEM1\MSVOA_W\Method\SFAMLM080422SMA.M
 Quant Title : SFAM01.0
 QLast Update : Fri Aug 05 00:24:31 2022
 Response via : Initial Calibration



TIC: VW024156.D\data.ms

(13) Acetone (T)

4.117min (-0.000) 11.89 ug/L m

response	9956
Ion	Exp% Act%
43.00	100.00 100.00
58.00	15.90 14.64
0.00	0.00 0.00
0.00	0.00 0.00

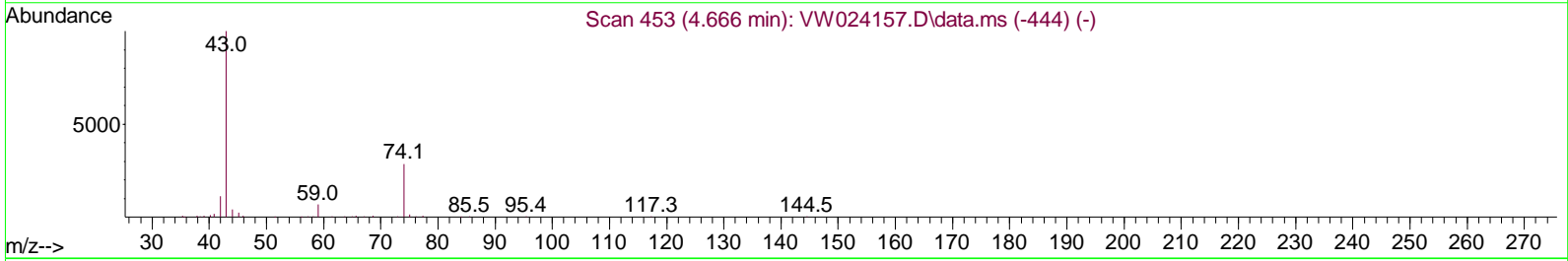
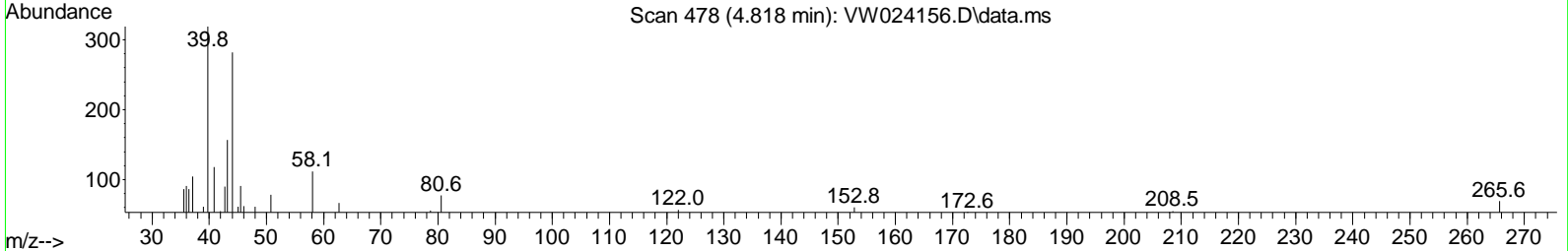
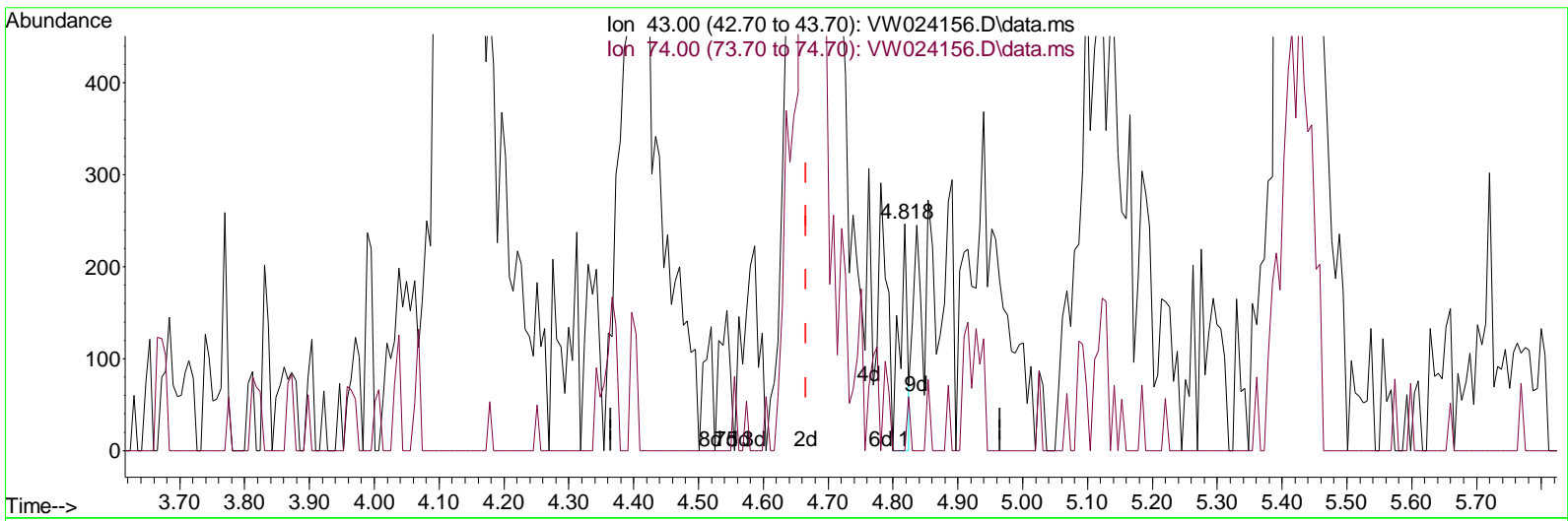
Data Path : Z:\voasrv\HPCHEM1\MSVOA_W\Data\VW080422\
 Data File : VW024156.D
 Acq On : 04 Aug 2022 09:46
 Operator : SY/VA
 Sample : VSTD00508
 Mi sc : 5.00g/10mL/MSVOA_W/SOIL
 ALS Vial : 4 Sample Multiplier: 1

Instrument :
 MSVOA_W
ClientSampleId :
 VSTD005408

Manual IntegrationsAPPROVED

Reviewed By :Semsettin Yesilyurt 08/07/2022
 Supervised By :Mahesh Dadoda 08/08/2022

Quant Time: Aug 05 00:36:43 2022
 Quant Method : Z:\voasrv\HPCHEM1\MSVOA_W\Method\SFAMLM080422SMA.M
 Quant Title : SFAM01.0
 QLast Update : Fri Aug 05 00:24:31 2022
 Response via : Initial Calibration



TIC: VW024156.D\data.ms

(15) Methyl Acetate (T)

4.818min (+ 0.152) 0.11 ug/L

response	202	
Ion	Exp%	Act%
43.00	100.00	100.00
74.00	26.90	29.21
0.00	0.00	0.00
0.00	0.00	0.00

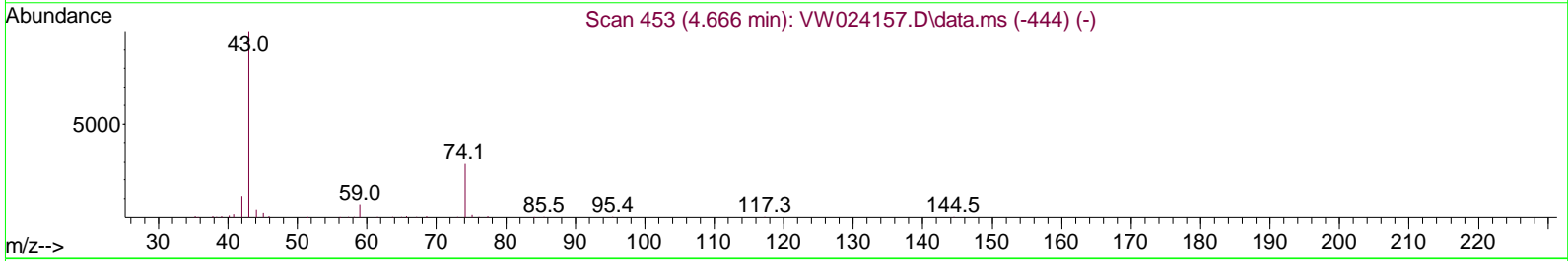
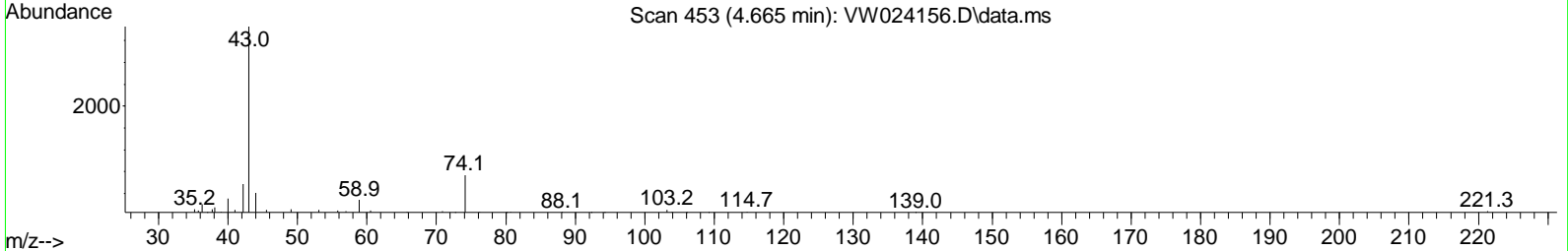
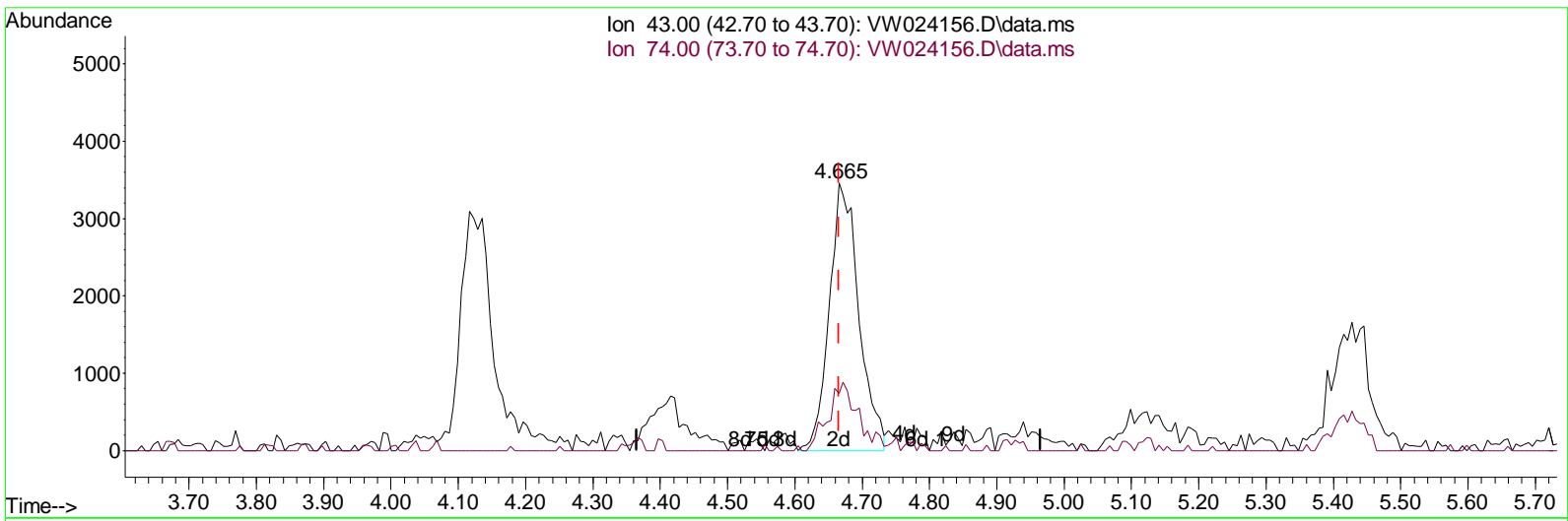
Data Path : Z:\voasrv\HPCHEM1\MSVOA_W\Data\VW080422\
 Data File : VW024156.D
 Acq On : 04 Aug 2022 09:46
 Operator : SY/VA
 Sample : VSTD00508
 Mi sc : 5.00g/10mL/MSVOA_W/SOIL
 ALS Vial : 4 Sample Multiplier: 1

Instrument :
 MSVOA_W
ClientSampleId :
 VSTD005408

Manual IntegrationsAPPROVED

Reviewed By :Semsettin Yesilyurt 08/07/2022
 Supervised By :Mahesh Dadoda 08/08/2022

Quant Time: Aug 05 00:36:43 2022
 Quant Method : Z:\voasrv\HPCHEM1\MSVOA_W\Method\SFAMLM080422SMA.M
 Quant Title : SFAM01.0
 QLast Update : Fri Aug 05 00:24:31 2022
 Response via : Initial Calibration



TIC: VW024156.D\data.ms

(15) Methyl Acetate (T)

4.665min (-0.000) 5.87 ug/L m

response	10552
Ion	Exp% Act%
43.00	100.00 100.00
74.00	26.90 0.56#
0.00	0.00 0.00
0.00	0.00 0.00

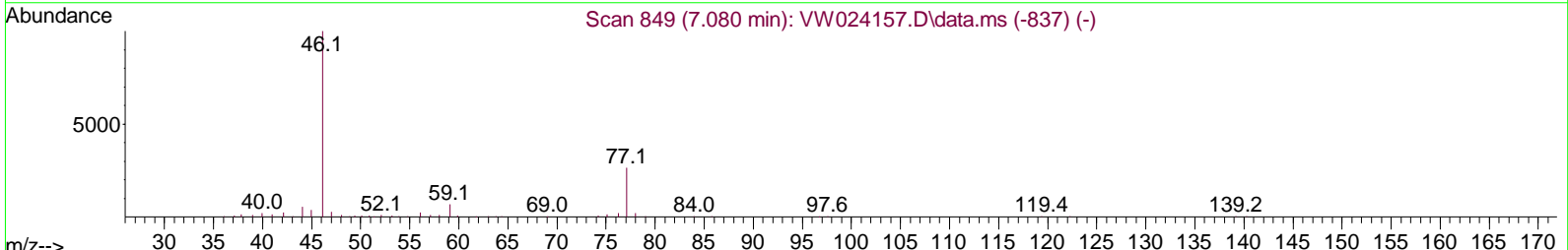
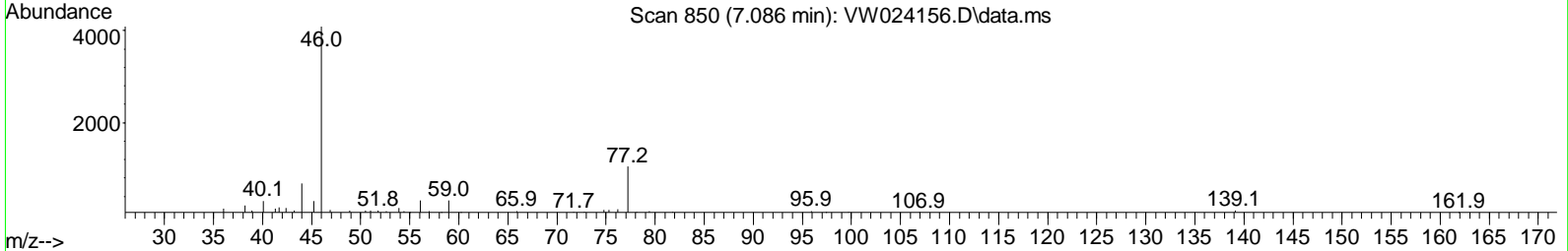
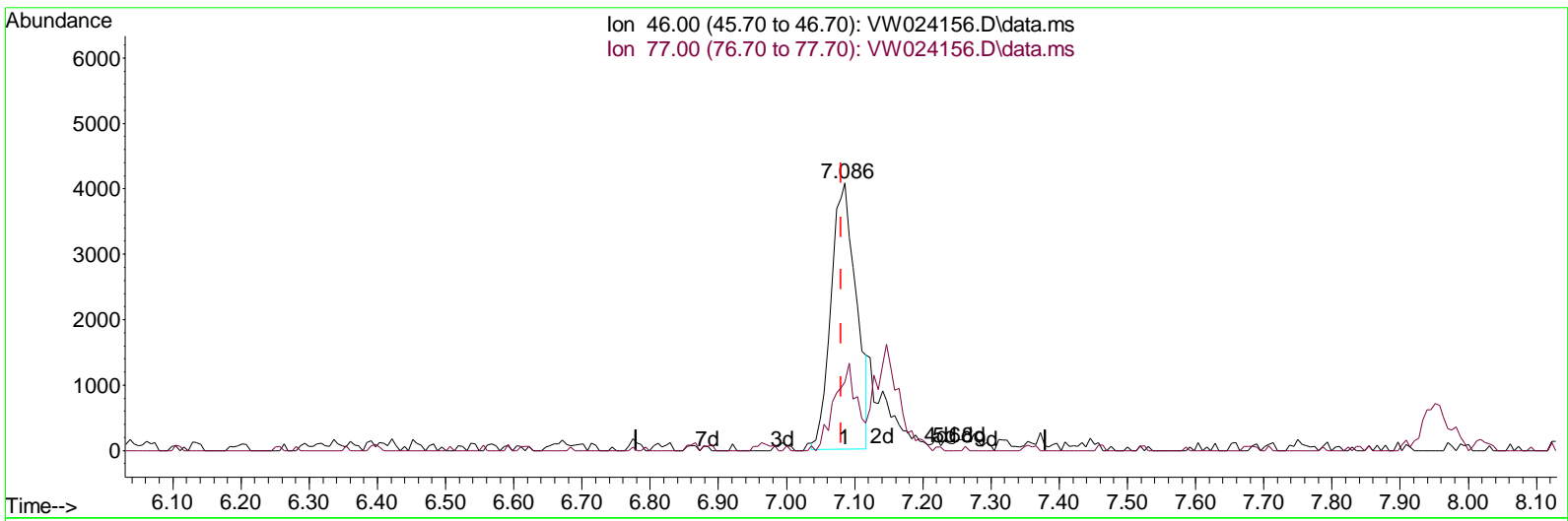
Data Path : Z:\voasrv\HPCHEM1\MSVOA_W\Data\VW080422\
 Data File : VW024156.D
 Acq On : 04 Aug 2022 09:46
 Operator : SY/VA
 Sample : VSTD00508
 Mi sc : 5.00g/10mL/MSVOA_W/SOIL
 ALS Vial : 4 Sample Multiplier: 1

Instrument :
 MSVOA_W
ClientSampleId :
 VSTD005408

Manual Integrations APPROVED

Reviewed By :Semsettin Yesilyurt 08/07/2022
 Supervised By :Mahesh Dadoda 08/08/2022

Quant Time: Aug 05 00:36:43 2022
 Quant Method : Z:\voasrv\HPCHEM1\MSVOA_W\Method\SFAMLM080422SMA.M
 Quant Title : SFAM01.0
 QLast Update : Fri Aug 05 00:24:31 2022
 Response via : Initial Calibration



TIC: VW024156.D\data.ms

(21) 2-Butanone-d5 (S)

7.086min (+ 0.006) 8.49 ug/L

response	10412
Ion	Exp% Act%
46.00	100.00 100.00
77.00	25.10 29.10
0.00	0.00 0.00
0.00	0.00 0.00

Data Path : Z:\voasrv\HPCHEM1\MSVOA_W\Data\W080422\
 Data File : W024156.D
 Acq On : 04 Aug 2022 09:46
 Operator : SY/VA
 Sample : VSTD00508
 Mi sc : 5.00g/10mL/MSVOA_W/SOIL
 ALS Vial : 4 Sample Multi plier: 1

Instrument :
 MSVOA_W
ClientSampleId :
 VSTD005408

Manual IntegrationsAPPROVED

Reviewed By :Semsettin Yesilyurt 08/07/2022
 Supervised By :Mahesh Dadoda 08/08/2022

Quant Time: Aug 05 00:36:43 2022
 Quant Method : Z:\voasrv\HPCHEM1\MSVOA_W\Method\SFAMWLM080422SMA.M
 Quant Title : SFAM01.0
 QLast Update : Fri Aug 05 00:24:31 2022
 Response via : Initial Calibration

Compound	R. T.	QI on	Response	Conc	Units	Dev(Min)	
Internal Standards							
1) 1,4-Di fluorobenzene	8.842	114	289256	25.000	ug/L	0.00	
28) Chlorobenzene-d5	11.628	117	280669	25.000	ug/L	0.00	
58) 1,4-Di chlorobenzene-d4	13.554	152	147805	25.000	ug/L	0.00	
System Monitoring Compounds							
4) Vinyl Chloride-d3	2.337	65	29499	4.879	ug/L	0.00	
7) Chloroethane-d5	2.867	69	17876	4.746	ug/L	0.00	
11) 1,1-Di chloroethene-d2	4.007	63	33767	4.900	ug/L	0.00	
21) 2-Butanone-d5	7.086	46	11635m	9.491	ug/L	0.00	
24) Chloroform-d	7.647	84	46980	5.368	ug/L	0.00	
26) 1,2-Di chloroethane-d4	8.299	65	25821	5.314	ug/L	0.00	
32) Benzene-d6	8.275	84	85861	5.187	ug/L	0.00	
36) 1,2-Di chloropropane-d6	9.274	67	26282	5.378	ug/L	0.00	
41) Toluene-d8	10.323	98	74683	4.827	ug/L	0.00	
43) trans-1,3-Di chloroprop...	10.573	79	10476	4.894	ug/L	0.00	
47) 2-Hexanone-d5	10.927	63	7730	8.566	ug/L	0.00	
56) 1,1,2,2-Tetrachloroeth...	12.688	84	26127	5.510	ug/L	0.00	
66) 1,2-Di chlorobenzene-d4	13.853	152	29091	5.378	ug/L	0.00	
Target Compounds							
							Qvalue
2) Dichlorodifluoromethane	2.001	85	12005	4.717	ug/L		98
3) Chloromethane	2.209	50	24406	5.114	ug/L		92
5) Vinyl chloride	2.349	62	35453	5.336	ug/L		95
6) Bromomethane	2.763	94	22188	5.825	ug/L		99
8) Chloroethane	2.910	64	14882	5.114	ug/L		97
9) Trichlorofluoromethane	3.245	101	16577	5.263	ug/L		96
10) 1,1,2-Tri chloro-1,2,2-...	4.050	101	22612	5.321	ug/L #		78
12) 1,1-Di chloroethene	4.025	96	18162	5.223	ug/L		91
13) Acetone	4.117	43	9956m	11.891	ug/L		
14) Carbon disulfide	4.373	76	58490	5.256	ug/L #		92
15) Methyl Acetate	4.665	43	10552m	5.867	ug/L		
16) Methylene chloride	4.909	84	31286	6.133	ug/L		98
17) trans-1,2-Di chloroethene	5.421	96	21220	5.269	ug/L		95
18) Methyl tert-butyl Ether	5.428	73	28508	4.978	ug/L #		76
19) 1,1-Di chloroethane	6.202	63	38744	5.477	ug/L		97
20) cis-1,2-Di chloroethene	7.165	96	21935	4.966	ug/L #		85
22) 2-Butanone	7.171	43	14667	10.259	ug/L		78
23) Bromochloromethane	7.506	128	11741	5.346	ug/L		97
25) Chloroform	7.671	83	41395	5.310	ug/L		98
27) 1,2-Di chloroethane	8.403	62	28709	5.473	ug/L		98
29) Cyclohexane	7.951	56	27812	4.833	ug/L		98
30) 1,1,1-Tri chloroethane	7.872	97	33397	5.276	ug/L		99
31) Carbon tetrachloride	8.061	117	31554	5.284	ug/L		99
33) Benzene	8.323	78	88166	5.319	ug/L		100
34) Trichloroethene	9.085	95	23302	5.318	ug/L		91
35) Methyl cyclohexane	9.335	83	32843	4.780	ug/L		96
37) 1,2-Di chloropropane	9.366	63	22466	5.483	ug/L #		90
38) Bromochloromethane	9.646	83	30345	5.280	ug/L		97
39) cis-1,3-Di chloropropene	10.073	75	28061	4.655	ug/L		99
40) 4-Methyl -2-pentanone	10.207	43	27054	9.948	ug/L		96
42) Toluene	10.384	91	88935	5.049	ug/L		98

Data Path : Z:\voasrv\HPCHEM1\MSVOA_W\Data\W080422\
 Data File : W024156.D
 Acq On : 04 Aug 2022 09:46
 Operator : SY/VA
 Sample : VSTD00508
 Misc : 5.00g/10mL/MSVOA_W/SOIL
 ALS Vial : 4 Sample Multiplier: 1

Instrument :
 MSVOA_W
ClientSampleId :
 VSTD005408

Manual IntegrationsAPPROVED

Reviewed By :Semsettin Yesilyurt 08/07/2022
 Supervised By :Mahesh Dadoda 08/08/2022

Quant Time: Aug 05 00:36:43 2022
 Quant Method : Z:\voasrv\HPCHEM1\MSVOA_W\Method\SFAMWLM080422SMA.M
 Quant Title : SFAM01.0
 QLast Update : Fri Aug 05 00:24:31 2022
 Response via : Initial Calibration

Compound	R. T.	QI on	Response	Conc	Units	Dev(Min)
44) trans-1,3-Dichloropropene	10.603	75	26912	4.886	ug/L	99
45) 1,1,2-Trichloroethane	10.786	97	18518	5.362	ug/L	98
46) Tetrachloroethene	10.859	164	18771	5.292	ug/L	94
48) 2-Hexanone	10.969	43	17010	9.216	ug/L #	98
49) Dibromochloromethane	11.128	129	20848	5.014	ug/L	92
50) 1,2-Dibromoethane	11.237	107	17259	5.216	ug/L #	99
51) Chlorobenzene	11.658	112	61539	5.113	ug/L	97
52) Ethyl benzene	11.731	91	93895	4.865	ug/L	96
53) m,p-Xylene	11.835	106	35670	4.748	ug/L	87
54) o-Xylene	12.164	106	33868	4.772	ug/L	93
55) Styrene	12.176	104	58530	4.742	ug/L	91
57) 1,1,2,2-Tetrachloroethane	12.713	83	23350	5.410	ug/L	99
59) Bromoform	12.347	173	11163	4.951	ug/L	97
60) Isopropyl benzene	12.463	105	87228	4.875	ug/L	97
61) 1,2,3-Trichloropropane	12.768	75	16153	5.491	ug/L	98
62) 1,3,5-Trimethyl benzene	12.938	105	67495	4.565	ug/L	99
63) 1,2,4-Trimethyl benzene	13.249	105	67140	4.611	ug/L	99
64) 1,3-Dichlorobenzene	13.499	146	44526	5.082	ug/L	93
65) 1,4-Dichlorobenzene	13.572	146	48806	5.260	ug/L	96
67) 1,2-Dichlorobenzene	13.865	146	43363	5.212	ug/L	95
68) 1,2-Dibromo-3-chloropropane	14.481	75	3766	5.480	ug/L	92
69) 1,3,5-Trichlorobenzene	14.621	180	28442	4.950	ug/L	99
70) 1,2,4-trichlorobenzene	15.127	180	21916	4.763	ug/L	97
71) Naphthalene	15.365	128	37072	4.137	ug/L #	91
72) 1,2,3-Trichlorobenzene	15.554	180	20518	4.898	ug/L	98

(#) = qualifier out of range (m) = manual integration (+) = signals summed

Data Path : Z:\voasrv\HPCHEM1\MSVOA_W\Data\VW080422\
 Data File : VW024156.D
 Acq On : 04 Aug 2022 09: 46
 Operator : SY/VA
 Sample : VSTD00508
 Mi sc : 5. 00g/10mL/MSVOA_W/SOIL
 ALS Vial : 4 Sample Multi plier: 1

Instrument :

MSVOA_W

ClientSampleId :

VSTD005408

Manual IntegrationsAPPROVED

Reviewed By :Semsettin Yesilyurt 08/07/2022

Supervised By :Mahesh Dadoda 08/08/2022

Quant Time: Aug 05 00: 36: 43 2022
 Quant Method : Z:\voasrv\HPCHEM1\MSVOA_W\Method\SFAMLM080422SMA. M
 Quant Title : SFAM01. 0
 QLast Update : Fri Aug 05 00: 24: 31 2022
 Response via : Initial Cal ibration

