

Data Path : Z:\voasrv\HPCHEM1\MSVOA_W\Data\VW081324\
 Data File : VW029899.D
 Acq On : 13 Aug 2024 16:03
 Operator : SY/MD
 Sample : VSTDCCC025EC
 Misc : 5.04g/10mL/MSVOA_W/SOIL/LA
 ALS Vial : 7 Sample Multiplier: 1

Instrument :
 MSVOA_W
ClientSampleId :

Quant Time: Aug 14 01:05:43 2024
 Quant Method : Z:\voasrv\HPCHEM1\MSVOA_W\Method\SFAMWLM072424SMA.M
 Quant Title : SFAM01.0
 QLast Update : Wed Aug 14 01:04:35 2024
 Response via : Initial Calibration

Compound	R.T.	QI on	Response	Conc	Units	Dev(Min)
Internal Standards						
1) 1,4-Difluorobenzene	8.843	114	212682	25.000	ug/L	0.00
28) Chlorobenzene-d5	11.629	117	203286	25.000	ug/L	0.00
58) 1,4-Dichlorobenzene-d4	13.555	152	102578	25.000	ug/L	0.00

System Monitoring Compounds						
4) Vinyl chloride-d3	2.362	65	85870	28.440	ug/L	0.00
Spike Amount	25.000	Range	30 - 150	Recovery	=	113.760%
7) Chloroethane-d5	2.899	69	71218	33.038	ug/L	0.00
Spike Amount	25.000	Range	30 - 150	Recovery	=	132.160%
11) 1,1-Dichloroethene-d2	4.021	65	36721	26.643	ug/L	0.00
Spike Amount	25.000	Range	45 - 110	Recovery	=	106.560%
21) 2-Butanone-d5	7.081	46	35172	42.501	ug/L	0.00
Spike Amount	50.000	Range	20 - 135	Recovery	=	85.000%
24) Chloroform-d	7.648	84	173746	31.558	ug/L	0.00
Spike Amount	25.000	Range	40 - 150	Recovery	=	126.240%
26) 1,2-Dichloroethane-d4	8.300	65	94258	30.058	ug/L	0.00
Spike Amount	25.000	Range	70 - 130	Recovery	=	120.240%
32) Benzene-d6	8.270	84	325664	29.649	ug/L	0.00
Spike Amount	25.000	Range	20 - 135	Recovery	=	118.600%
36) 1,2-Dichloropropane-d6	9.270	67	96838	27.611	ug/L	0.00
Spike Amount	25.000	Range	70 - 120	Recovery	=	110.440%
41) Toluene-d8	10.318	98	310663	31.809	ug/L	0.00
Spike Amount	25.000	Range	30 - 130	Recovery	=	127.240%
43) trans-1,3-Dichloropropene	10.574	79	40960	28.862	ug/L	0.00
Spike Amount	25.000	Range	30 - 135	Recovery	=	115.440%
47) 2-Hexanone-d5	10.922	63	26378	45.612	ug/L	0.00
Spike Amount	50.000	Range	20 - 135	Recovery	=	91.220%
56) 1,1,2,2-Tetrachloroethene	12.690	84	77053	29.588	ug/L	0.00
Spike Amount	25.000	Range	45 - 120	Recovery	=	118.360%
66) 1,2-Dichlorobenzene-d4	13.848	152	99243	31.158	ug/L	0.00
Spike Amount	25.000	Range	75 - 120	Recovery	=	124.640%#

Target Compounds						Qvalue
2) Dichlorodifluoromethane	2.015	85	64276	22.420	ug/L	91
3) Chloromethane	2.222	50	66967	18.877	ug/L	98
5) Vinyl chloride	2.375	62	88390	22.237	ug/L	98
6) Bromomethane	2.789	94	59095	27.075	ug/L	99
8) Chloroethane	2.929	64	57686	25.511	ug/L	97
9) Trichlorofluoromethane	3.265	101	74056	23.325	ug/L	100
10) 1,1,2-Trichloro-1,2,2-trifluoroethane	4.069	101	76494	24.190	ug/L	94
12) 1,1-Dichloroethene	4.039	96	69002	23.749	ug/L	80
13) Acetone	4.130	43	35988	34.992	ug/L	93
14) Carbon disulfide	4.386	76	188722	19.518	ug/L	99
15) Methyl Acetate	4.673	43	29270	17.087	ug/L #	91
16) Methylene chloride	4.917	84	82516	18.559	ug/L	84
17) trans-1,2-Dichloroethene	5.423	96	74674	23.850	ug/L	85
18) Methyl tert-butyl Ether	5.429	73	117101	22.693	ug/L #	67
19) 1,1-Dichloroethane	6.215	63	147571	22.347	ug/L	99
20) cis-1,2-Dichloroethene	7.166	96	84175	24.784	ug/L	97
22) 2-Butanone	7.172	43	41174	31.245	ug/L	83
23) Bromochloromethane	7.514	128	36786	25.513	ug/L #	74
25) Chloroform	7.672	83	160851	25.854	ug/L	99

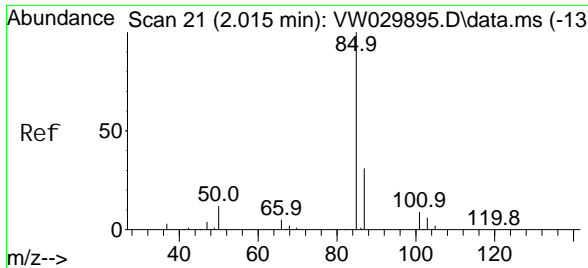
Data Path : Z:\voasrv\HPCHEM1\MSVOA_W\Data\VW081324\
 Data File : VW029899.D
 Acq On : 13 Aug 2024 16:03
 Operator : SY/MD
 Sample : VSTDCCC025EC
 Misc : 5.04g/10mL/MSVOA_W/SOIL/A
 ALS Vial : 7 Sample Multiplier: 1

Instrument :
 MSVOA_W
ClientSampleId :

Quant Time: Aug 14 01:05:43 2024
 Quant Method : Z:\voasrv\HPCHEM1\MSVOA_W\Method\SFAMWLM072424SMA.M
 Quant Title : SFAM01.0
 QLast Update : Wed Aug 14 01:04:35 2024
 Response via : Initial Calibration

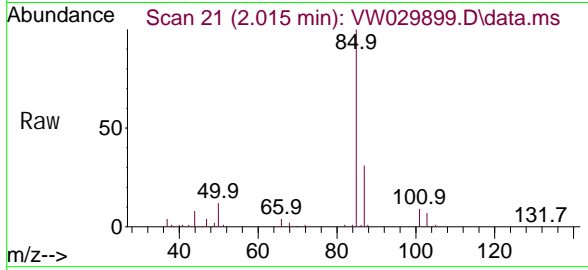
Compound	R. T.	QI on	Response	Conc	Units	Dev(Min)
27) 1,2-Dichloroethane	8.398	62	103792	22.891	ug/L	98
29) Cyclohexane	7.953	56	106556	18.445	ug/L	91
30) 1,1,1-Tri chloroethane	7.867	97	125051	24.291	ug/L	95
31) Carbon tetrachloride	8.069	117	110995	23.928	ug/L	99
33) Benzene	8.319	78	322322	23.141	ug/L	100
34) Trichloroethene	9.087	95	85571	23.435	ug/L	95
35) Methyl cyclohexane	9.337	83	132906	21.844	ug/L	94
37) 1,2-Dichloropropane	9.367	63	83811	21.957	ug/L	98
38) Bromodichloromethane	9.642	83	113423	24.954	ug/L	98
39) cis-1,3-Dichloropropene	10.068	75	128069	23.039	ug/L	97
40) 4-Methyl-2-pentanone	10.209	43	84585	34.888	ug/L #	92
42) Toluene	10.385	91	356263	25.058	ug/L	99
44) trans-1,3-Dichloropropene	10.605	75	108838	23.585	ug/L	98
45) 1,1,2-Tri chloroethane	10.788	97	62652	24.433	ug/L	98
46) Tetrachloroethene	10.861	164	61214	23.066	ug/L	94
48) 2-Hexanone	10.964	43	63737	35.101	ug/L #	92
49) Dibromochloromethane	11.123	129	66990	25.165	ug/L	97
50) 1,2-Dibromoethane	11.233	107	56906	23.985	ug/L	98
51) Chlorobenzene	11.653	112	218989	24.763	ug/L	95
52) Ethyl benzene	11.727	91	404962	25.251	ug/L	100
53) m,p-Xylene	11.836	106	147031	24.928	ug/L	98
54) o-Xylene	12.159	106	138919	25.577	ug/L	91
55) Styrene	12.178	104	247441	26.282	ug/L	98
57) 1,1,2,2-Tetrachloroethane	12.708	83	74504	23.672	ug/L #	94
59) Bromoform	12.348	173	37826	24.507	ug/L #	96
60) Isopropyl benzene	12.458	105	395311	24.904	ug/L	99
61) 1,2,3-Tri chloropropane	12.763	75	52206	20.926	ug/L	96
62) 1,3,5-Tri methyl benzene	12.940	105	324768	27.526	ug/L	98
63) 1,2,4-Tri methyl benzene	13.245	105	326621	25.885	ug/L	97
64) 1,3-Dichlorobenzene	13.494	146	167320	24.706	ug/L	92
65) 1,4-Dichlorobenzene	13.574	146	176371	25.353	ug/L	97
67) 1,2-Dichlorobenzene	13.866	146	151577	24.584	ug/L	99
68) 1,2-Dibromo-3-chloropropane	14.476	75	10958	19.344	ug/L #	85
69) 1,3,5-Tri chlorobenzene	14.622	180	113125	24.414	ug/L	99
70) 1,2,4-tri chlorobenzene	15.128	180	96372	24.688	ug/L	93
71) Naphthalene	15.360	128	175550	23.569	ug/L	99
72) 1,2,3-Tri chlorobenzene	15.549	180	84246	23.844	ug/L	96

(#) = qualifier out of range (m) = manual integration (+) = signals summed

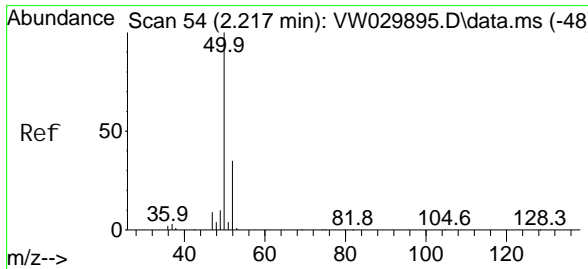
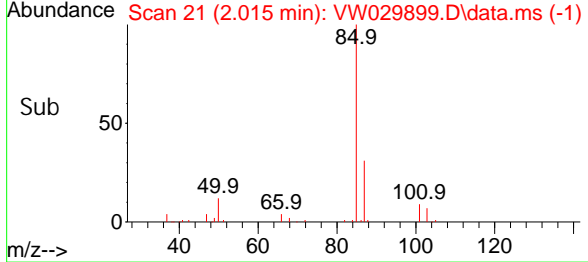
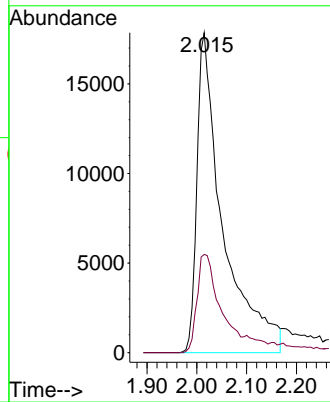


#2
 Di chl orodi fluoromethane
 Concen: 22.420 ug/L
 RT: 2.015 min Scan# 21
 Delta R.T. -0.001 min
 Lab File: VW029899.D
 Acq: 13 Aug 2024 16:03

Instrument : MSVOA_W
 ClientSampleId :

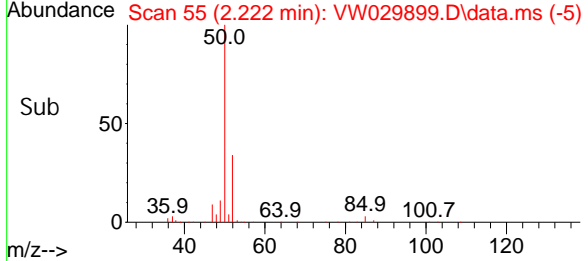
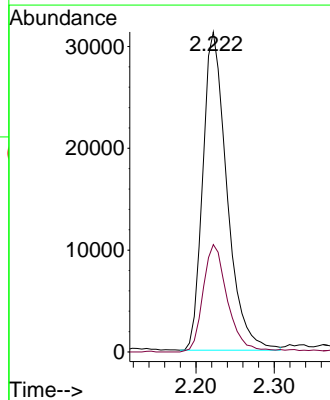
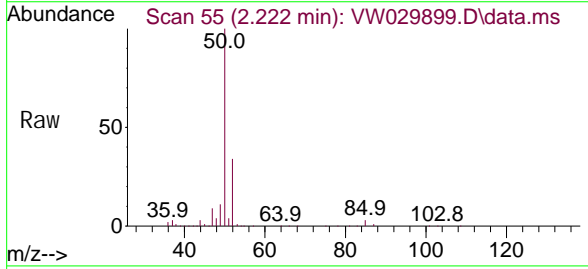


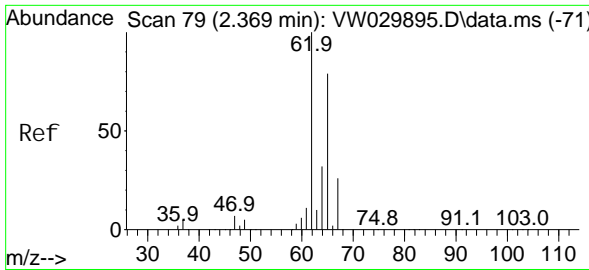
Tgt Ion: 85 Resp: 64276
 Ion Ratio Lower Upper
 85 100
 87 27.1 25.5 38.3



#3
 Chloromethane
 Concen: 18.877 ug/L
 RT: 2.222 min Scan# 55
 Delta R.T. 0.006 min
 Lab File: VW029899.D
 Acq: 13 Aug 2024 16:03

Tgt Ion: 50 Resp: 66967
 Ion Ratio Lower Upper
 50 100
 52 33.6 22.5 41.9

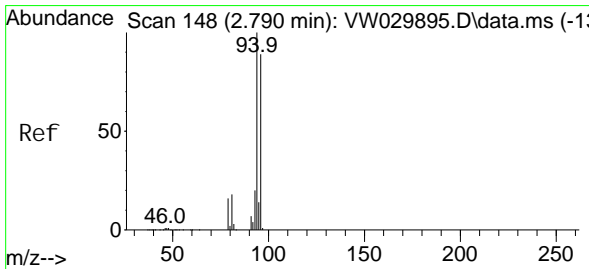
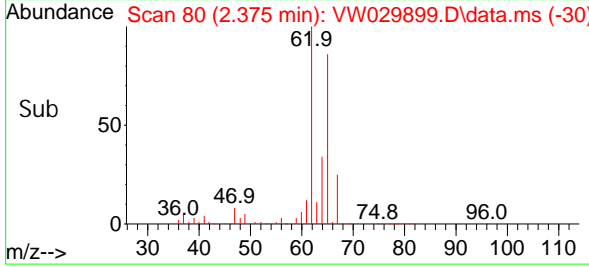
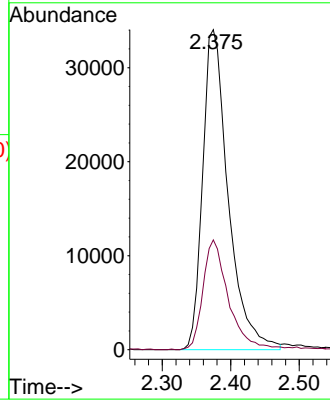
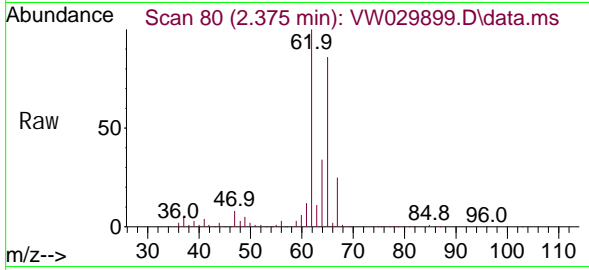




#5
 Vinyl chloride
 Concen: 22.237 ug/L
 RT: 2.375 min Scan# 80
 Delta R.T. 0.006 min
 Lab File: VW029899.D
 Acq: 13 Aug 2024 16:03

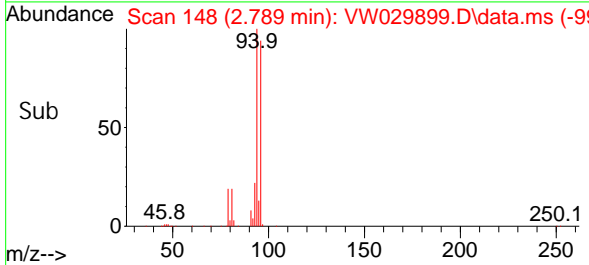
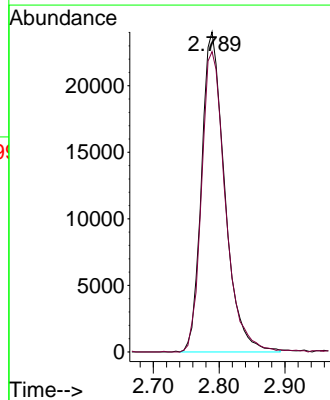
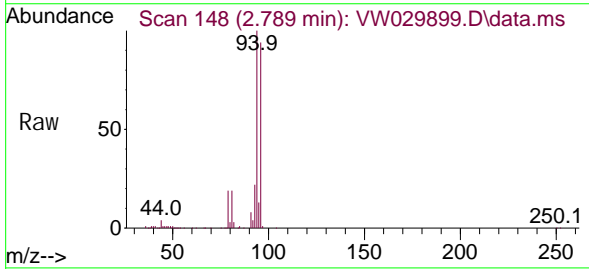
Instrument :
 MSVOA_W
 ClientSampleId :

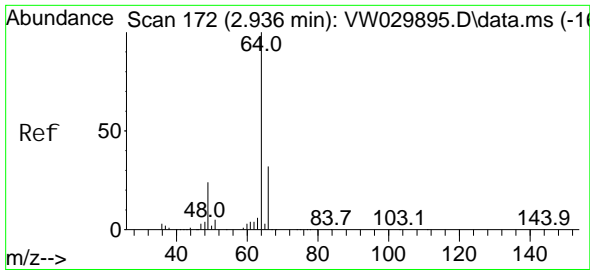
Tgt Ion: 62 Resp: 88390
 Ion Ratio Lower Upper
 62 100
 64 34.3 23.2 43.2



#6
 Bromomethane
 Concen: 27.075 ug/L
 RT: 2.789 min Scan# 148
 Delta R.T. -0.001 min
 Lab File: VW029899.D
 Acq: 13 Aug 2024 16:03

Tgt Ion: 94 Resp: 59095
 Ion Ratio Lower Upper
 94 100
 96 93.8 66.2 123.0

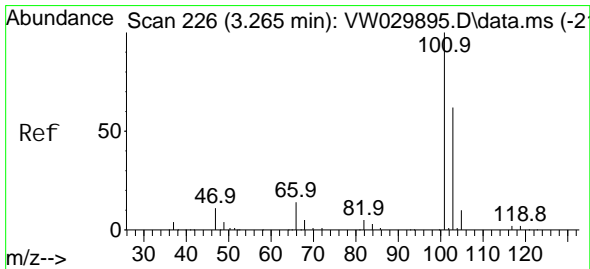
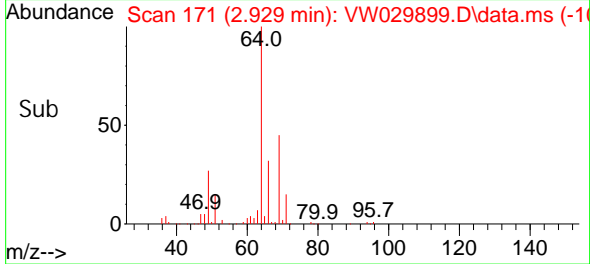
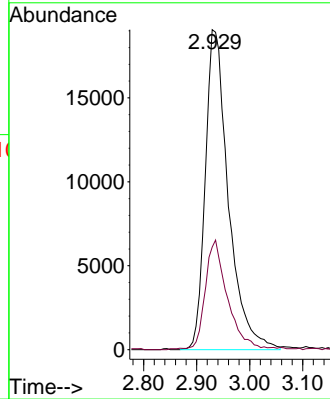
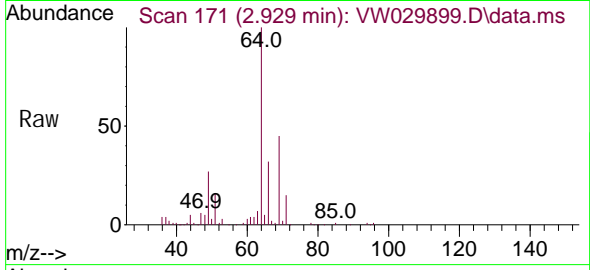




#8
 Chloroethane
 Concen: 25.511 ug/L
 RT: 2.929 min Scan# 171
 Delta R.T. -0.007 min
 Lab File: VW029899.D
 Acq: 13 Aug 2024 16:03

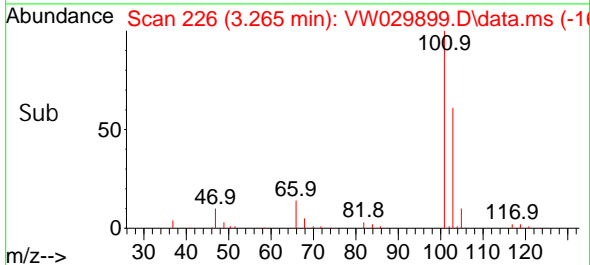
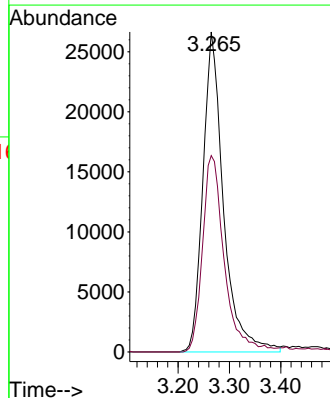
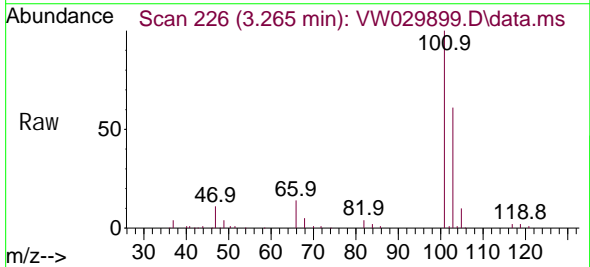
Instrument :
 MSVOA_W
 ClientSampleId :

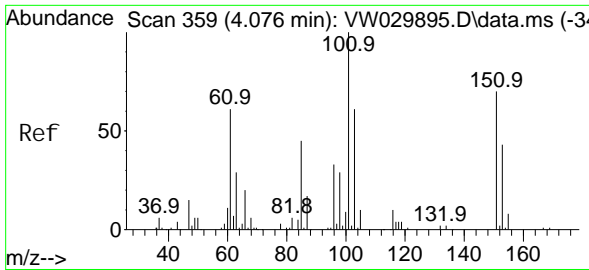
Tgt Ion: 64 Resp: 57686
 Ion Ratio Lower Upper
 64 100
 66 32.1 21.2 39.4



#9
 Trichlorofluoromethane
 Concen: 23.325 ug/L
 RT: 3.265 min Scan# 226
 Delta R.T. -0.001 min
 Lab File: VW029899.D
 Acq: 13 Aug 2024 16:03

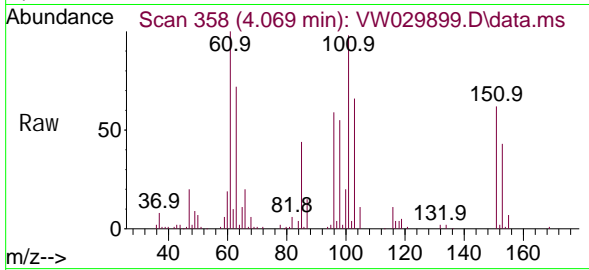
Tgt Ion: 101 Resp: 74056
 Ion Ratio Lower Upper
 101 100
 103 63.7 51.0 76.4



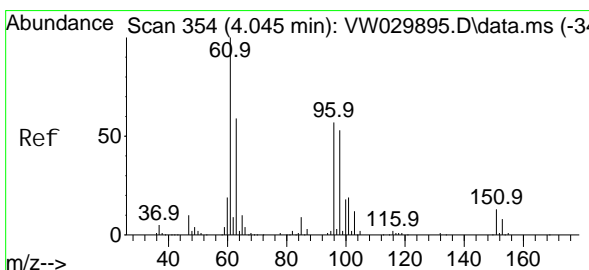
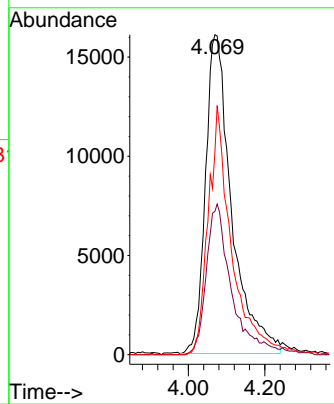
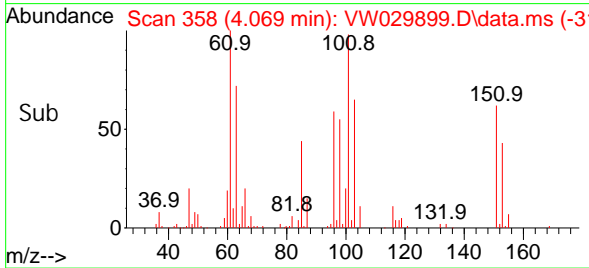


#10
 1,1,2-Tri chloro-1,2,2-tri fluoroethane
 Concen: 24.190 ug/L
 RT: 4.069 min Scan# 358
 Delta R.T. -0.007 min
 Lab File: VW029899.D
 Acq: 13 Aug 2024 16:03

Instrument : MSVOA_W
 ClientSampleId :

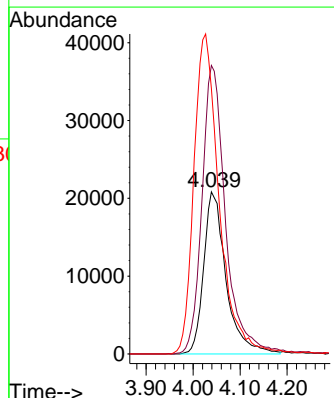
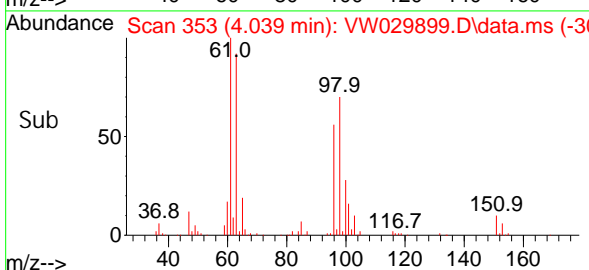
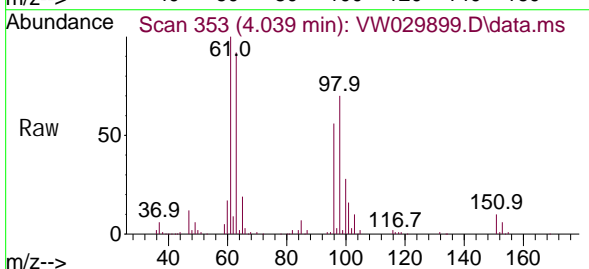


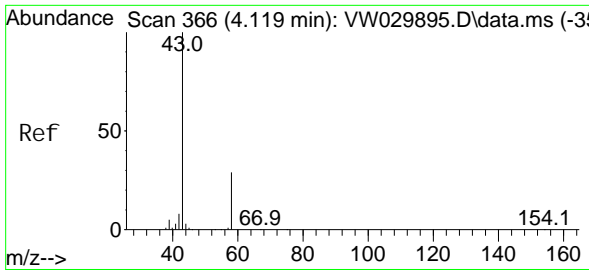
Tgt Ion: 101 Resp: 76494
 Ion Ratio Lower Upper
 101 100
 85 40.1 34.2 51.4
 151 62.3 54.2 81.2



#12
 1,1-Di chloroethene
 Concen: 23.749 ug/L
 RT: 4.039 min Scan# 353
 Delta R.T. -0.007 min
 Lab File: VW029899.D
 Acq: 13 Aug 2024 16:03

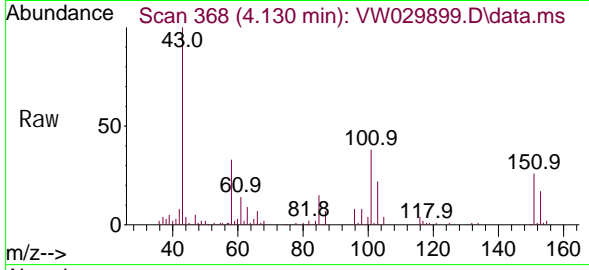
Tgt Ion: 96 Resp: 69002
 Ion Ratio Lower Upper
 96 100
 61 178.1 138.3 256.9
 63 163.8 89.0 165.4



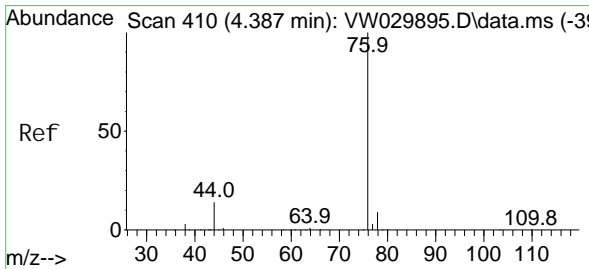
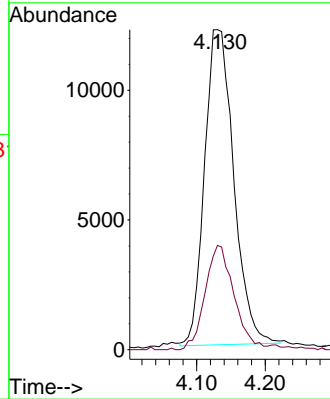
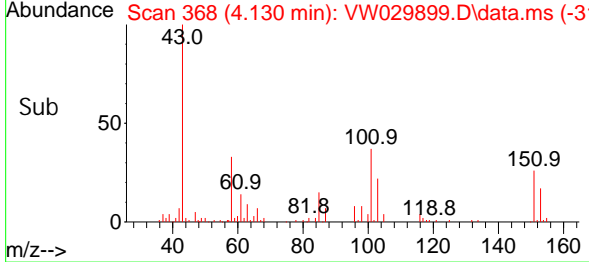


#13
 Acetone
 Concen: 34.992 ug/L
 RT: 4.130 min Scan# 368
 Delta R.T. 0.012 min
 Lab File: VW029899.D
 Acq: 13 Aug 2024 16:03

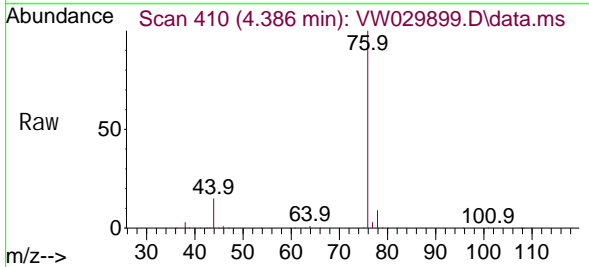
Instrument : MSVOA_W
 ClientSampleId :



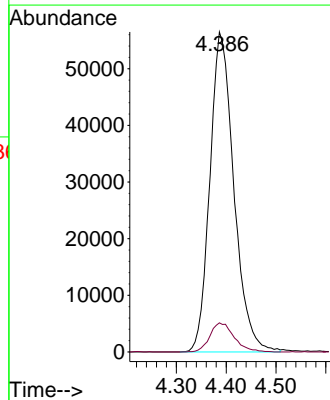
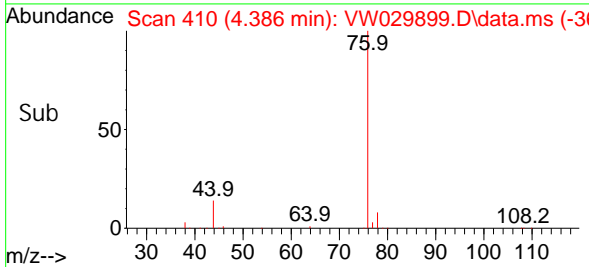
Tgt Ion: 43 Resp: 35988
 Ion Ratio Lower Upper
 43 100
 58 32.5 0.0 57.6

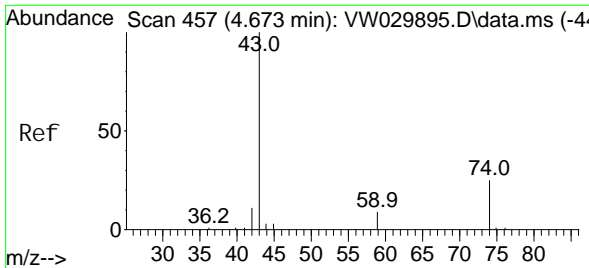


#14
 Carbon di sul fi de
 Concen: 19.518 ug/L
 RT: 4.386 min Scan# 410
 Delta R.T. -0.001 min
 Lab File: VW029899.D
 Acq: 13 Aug 2024 16:03



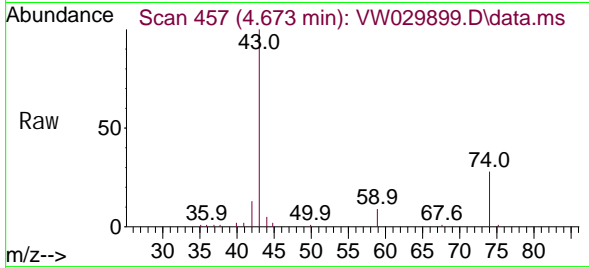
Tgt Ion: 76 Resp: 188722
 Ion Ratio Lower Upper
 76 100
 78 9.1 7.6 11.4



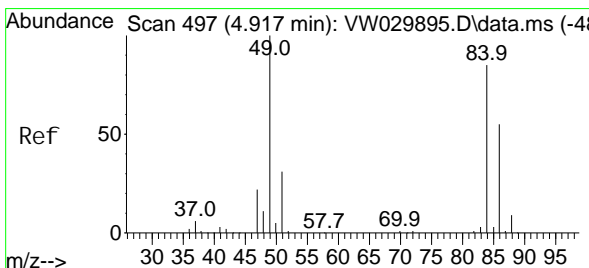
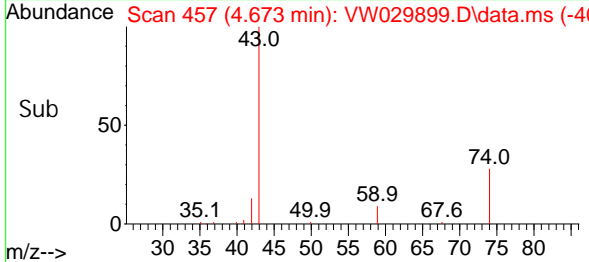
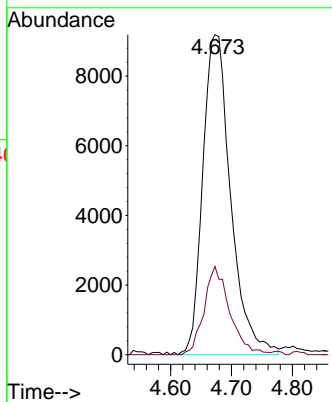


#15
 Methyl Acetate
 Concen: 17.087 ug/L
 RT: 4.673 min Scan# 411
 Delta R.T. -0.001 min
 Lab File: VW029899.D
 Acq: 13 Aug 2024 16:03

Instrument :
 MSVOA_W
 ClientSampleId :

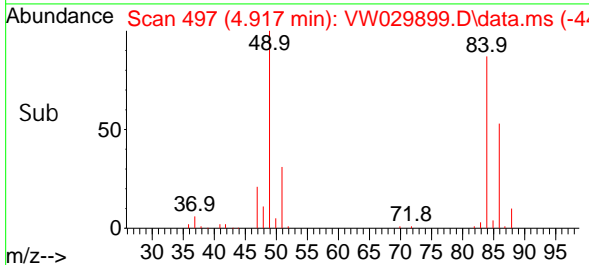
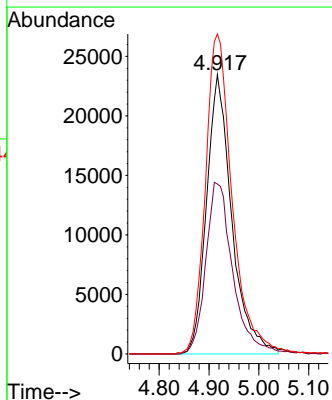
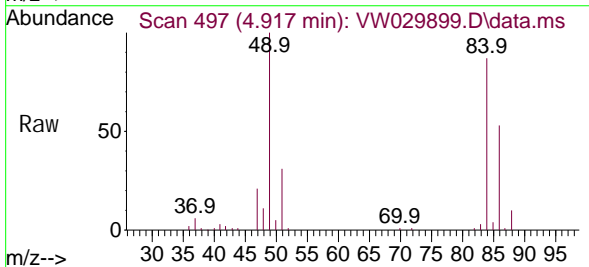


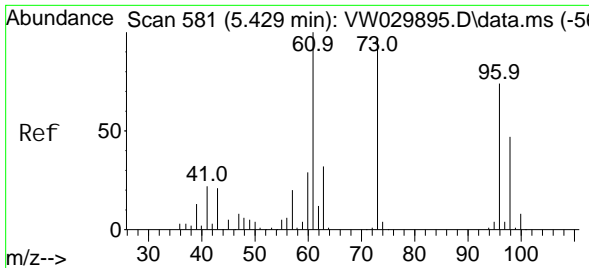
Tgt Ion: 43 Resp: 29270
 Ion Ratio Lower Upper
 43 100
 74 24.7 16.5 24.7#



#16
 Methylene chloride
 Concen: 18.559 ug/L
 RT: 4.917 min Scan# 497
 Delta R.T. -0.000 min
 Lab File: VW029899.D
 Acq: 13 Aug 2024 16:03

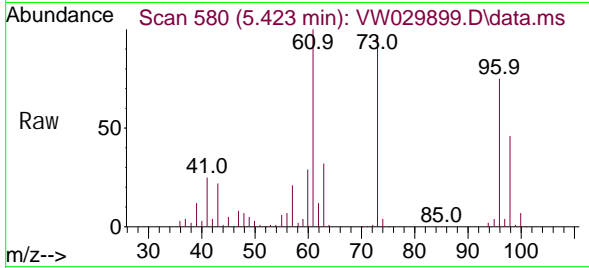
Tgt Ion: 84 Resp: 82516
 Ion Ratio Lower Upper
 84 100
 86 60.8 44.7 82.9
 49 114.5 99.0 184.0



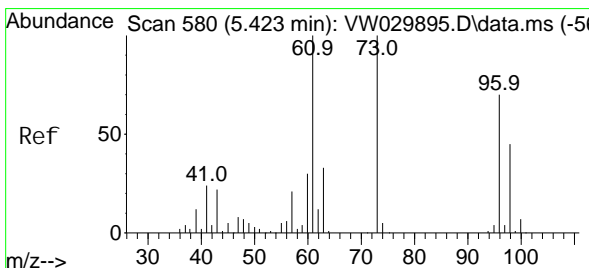
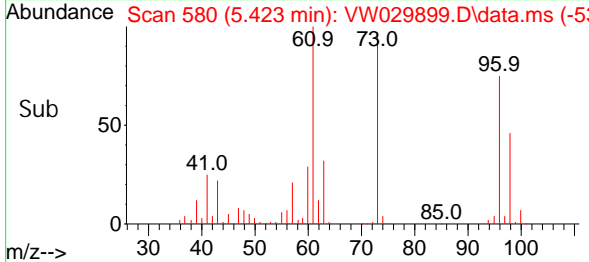
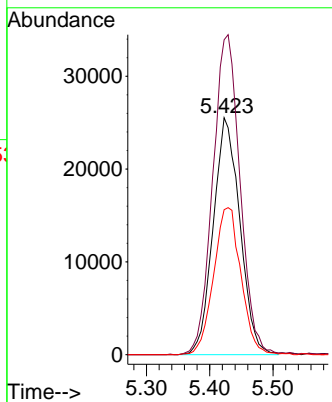


#17
 trans-1, 2-Di chloroethene
 Concen: 23.850 ug/L
 RT: 5.423 min Scan# 580
 Delta R.T. -0.007 min
 Lab File: VW029899.D
 Acq: 13 Aug 2024 16:03

Instrument : MSVOA_W
 ClientSampleId :

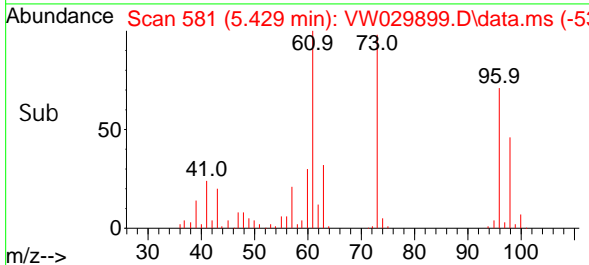
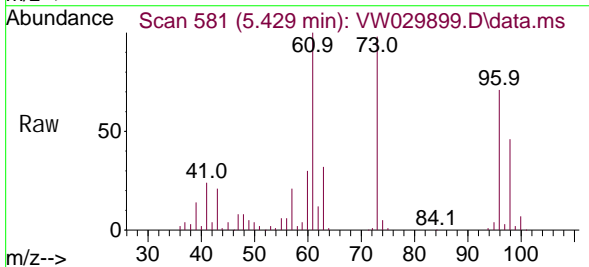
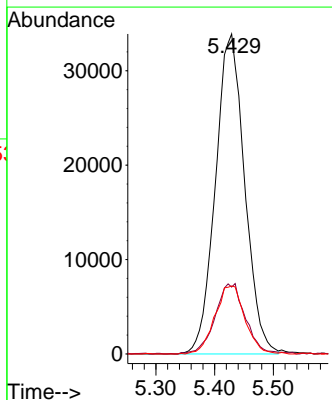


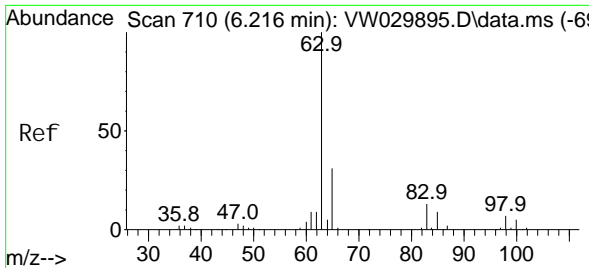
Tgt Ion: 96 Resp: 74674
 Ion Ratio Lower Upper
 96 100
 61 132.9 111.2 206.6
 98 61.1 45.0 83.6



#18
 Methyl tert-butyl Ether
 Concen: 22.693 ug/L
 RT: 5.429 min Scan# 581
 Delta R.T. 0.006 min
 Lab File: VW029899.D
 Acq: 13 Aug 2024 16:03

Tgt Ion: 73 Resp: 117101
 Ion Ratio Lower Upper
 73 100
 43 13.3 18.3 27.5#
 57 0.0 17.9 26.9#



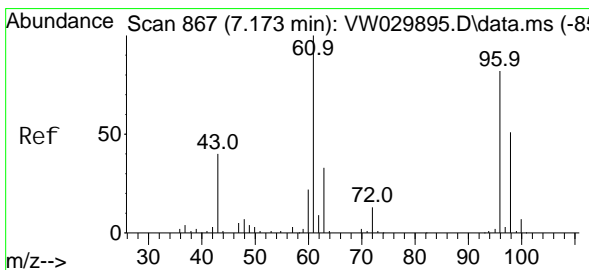
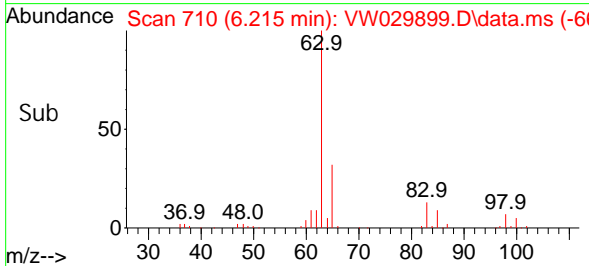
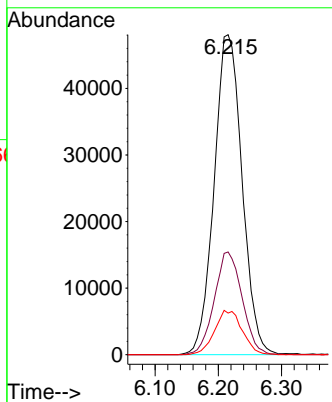
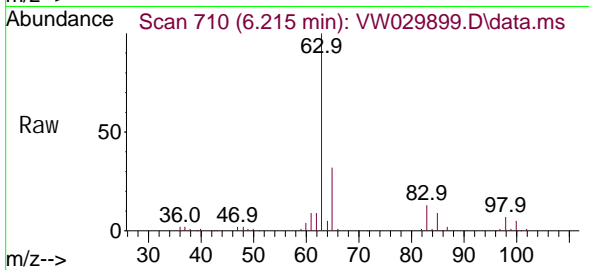


#19
 1,1-Dichloroethane
 Concen: 22.347 ug/L
 RT: 6.215 min Scan# 710
 Delta R.T. -0.001 min
 Lab File: VW029899.D
 Acq: 13 Aug 2024 16:03

Instrument : MSVOA_W
 ClientSampleId :

Tgt Ion: 63 Resp: 147571

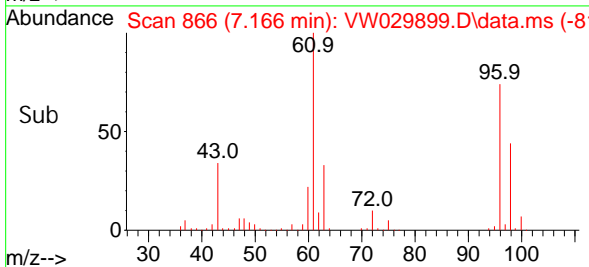
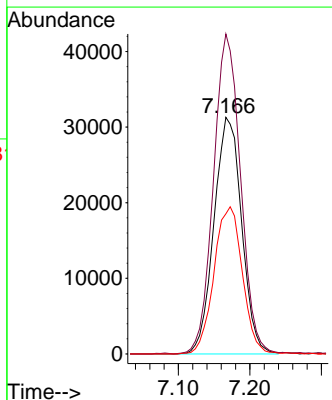
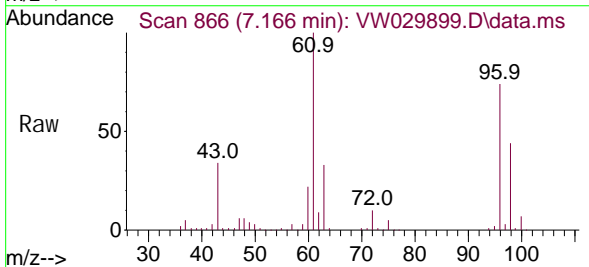
Ion	Ratio	Lower	Upper
63	100		
65	32.1	22.3	41.3
83	13.0	8.5	15.7

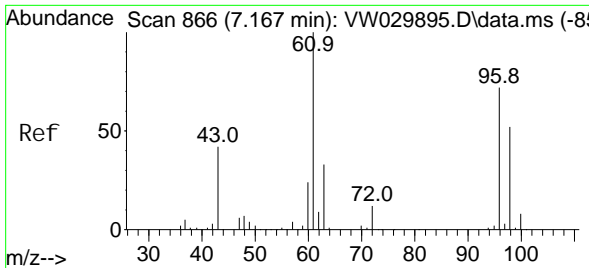


#20
 cis-1,2-Dichloroethene
 Concen: 24.784 ug/L
 RT: 7.166 min Scan# 866
 Delta R.T. -0.007 min
 Lab File: VW029899.D
 Acq: 13 Aug 2024 16:03

Tgt Ion: 96 Resp: 84175

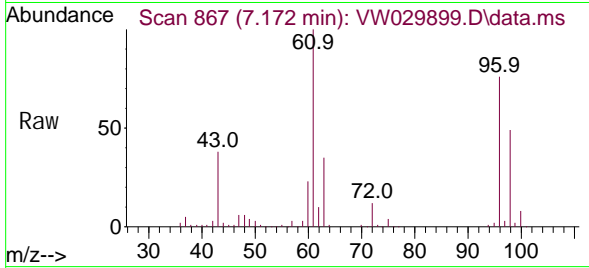
Ion	Ratio	Lower	Upper
96	100		
61	135.3	98.2	182.4
98	59.3	41.9	77.9



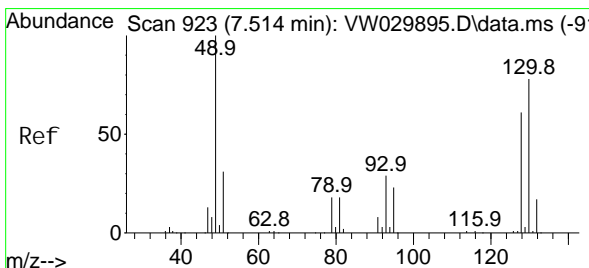
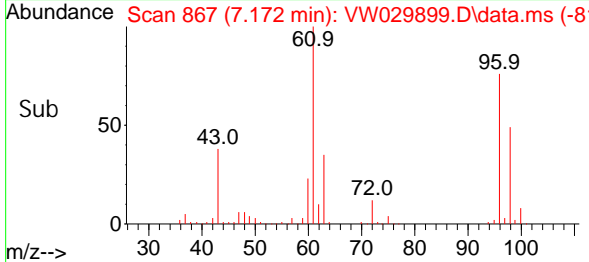
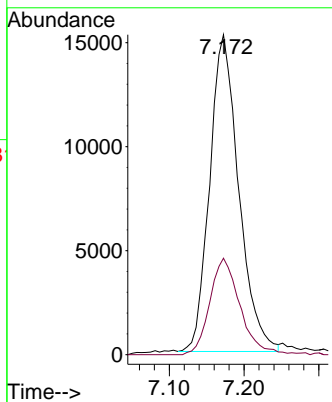


#22
 2-Butanone
 Concen: 31.245 ug/L
 RT: 7.172 min Scan# 867
 Delta R.T. 0.006 min
 Lab File: VW029899.D
 Acq: 13 Aug 2024 16:03

Instrument : MSVOA_W
 ClientSampleId :

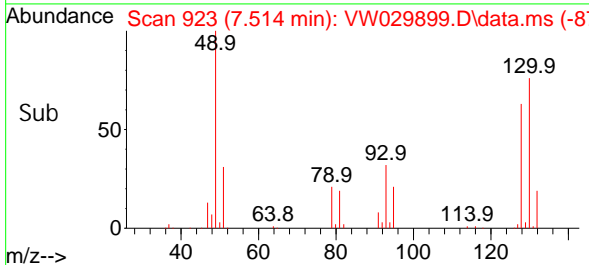
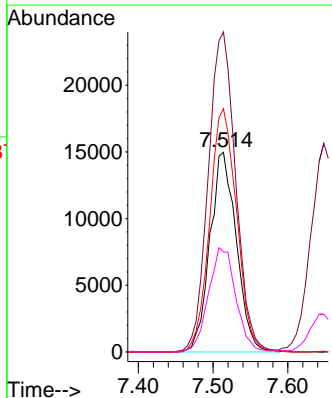
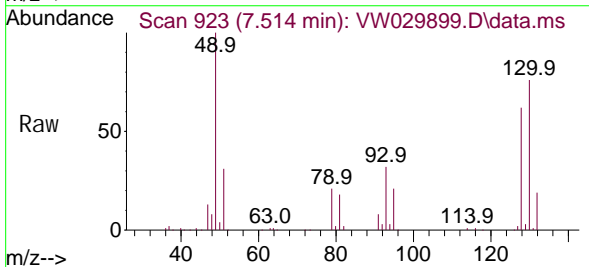


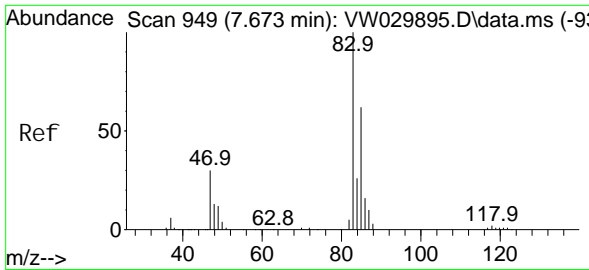
Tgt Ion: 43 Resp: 41174
 Ion Ratio Lower Upper
 43 100
 72 31.5 11.7 35.1



#23
 Bromochloromethane
 Concen: 25.513 ug/L
 RT: 7.514 min Scan# 923
 Delta R.T. -0.001 min
 Lab File: VW029899.D
 Acq: 13 Aug 2024 16:03

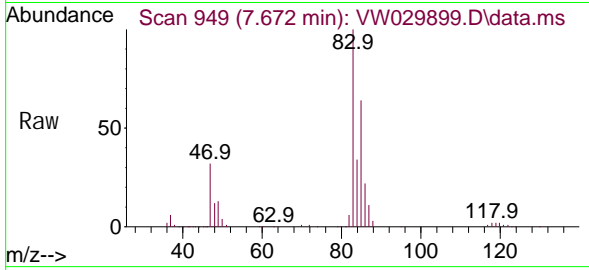
Tgt Ion: 128 Resp: 36786
 Ion Ratio Lower Upper
 128 100
 49 160.3 151.1 280.7
 130 121.8 96.8 179.8
 51 50.1 54.6 82.0#



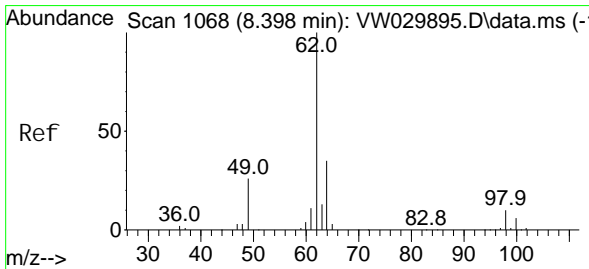
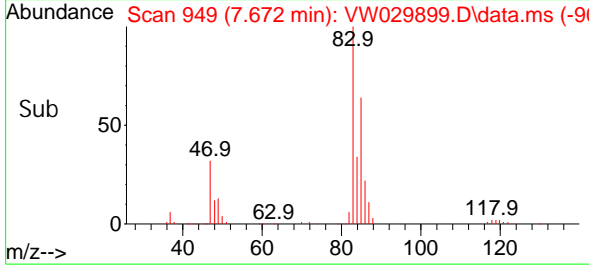
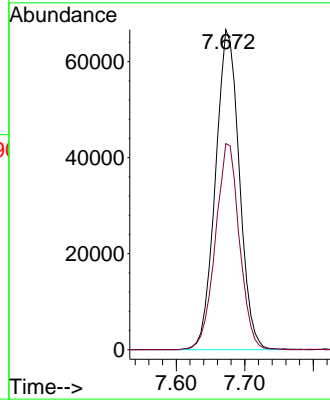


#25
 Chloroform
 Concen: 25.854 ug/L
 RT: 7.672 min Scan# 949
 Delta R.T. -0.001 min
 Lab File: VW029899.D
 Acq: 13 Aug 2024 16:03

Instrument : MSVOA_W
 ClientSampleId :

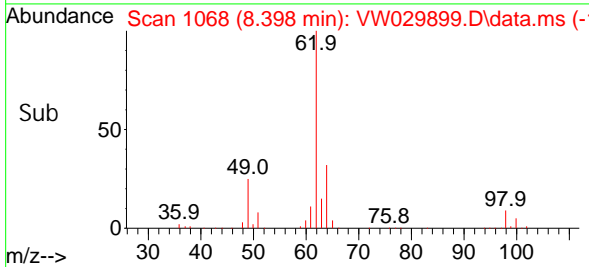
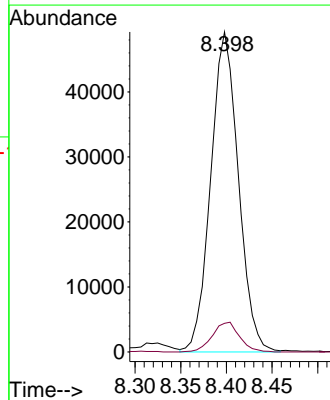
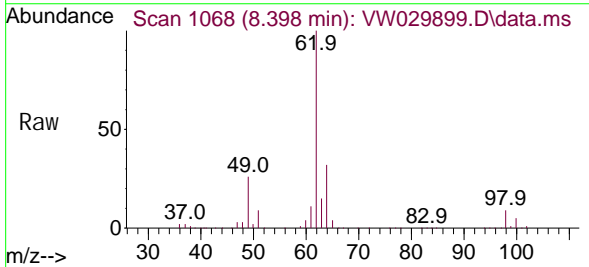


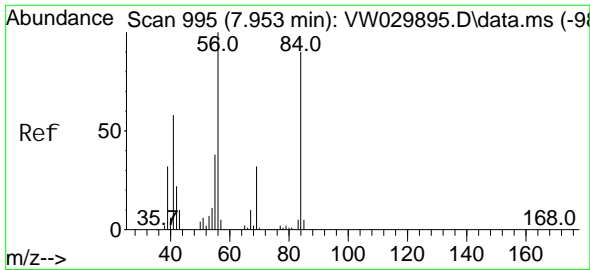
Tgt Ion: 83 Resp: 160851
 Ion Ratio Lower Upper
 83 100
 85 64.4 44.4 82.4



#27
 1,2-Dichloroethane
 Concen: 22.891 ug/L
 RT: 8.398 min Scan# 1068
 Delta R.T. -0.001 min
 Lab File: VW029899.D
 Acq: 13 Aug 2024 16:03

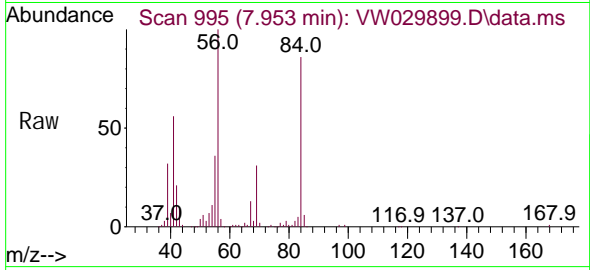
Tgt Ion: 62 Resp: 103792
 Ion Ratio Lower Upper
 62 100
 98 8.9 6.6 10.0



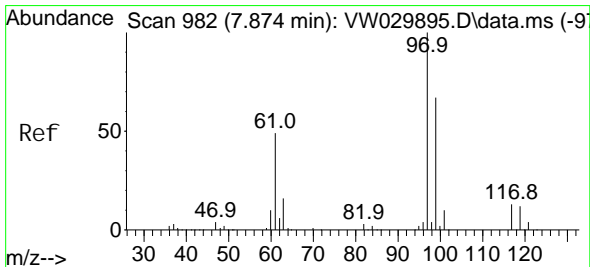
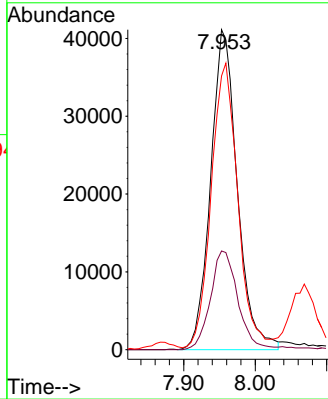
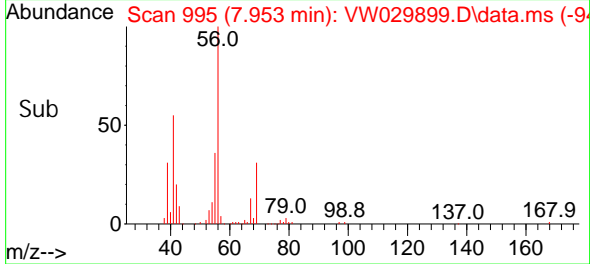


#29
 Cycl ohexane
 Concen: 18.445 ug/L
 RT: 7.953 min Scan# 995
 Delta R.T. -0.001 min
 Lab File: VW029899.D
 Acq: 13 Aug 2024 16:03

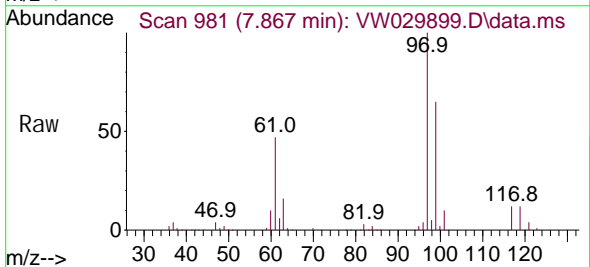
Instrument : MSVOA_W
 ClientSampleId :



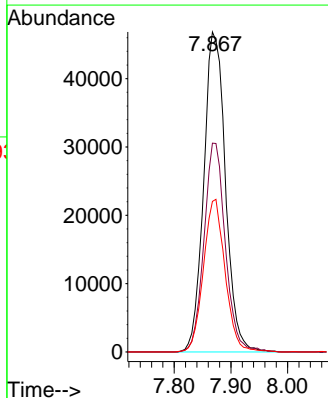
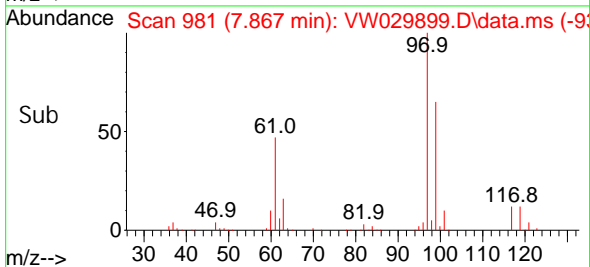
Tgt Ion	Resp	Lower	Upper
56	106556		
69	31.6	23.0	34.4
84	88.8	63.5	95.3

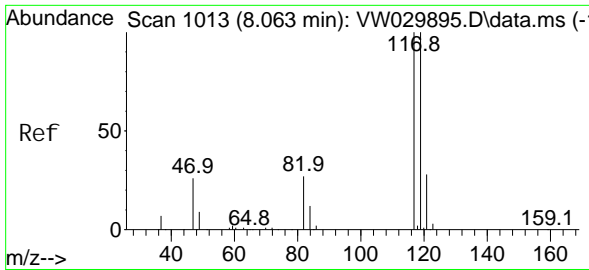


#30
 1,1,1-Tri chloroethane
 Concen: 24.291 ug/L
 RT: 7.867 min Scan# 981
 Delta R.T. -0.007 min
 Lab File: VW029899.D
 Acq: 13 Aug 2024 16:03



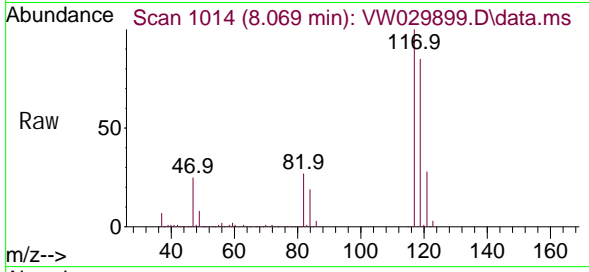
Tgt Ion	Resp	Lower	Upper
97	125051		
99	63.7	52.1	78.1
61	47.5	42.6	63.8



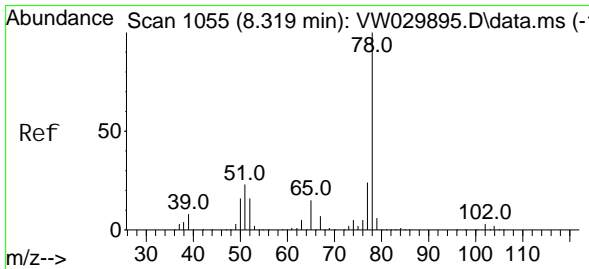
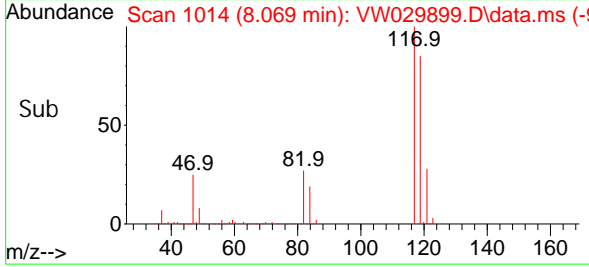
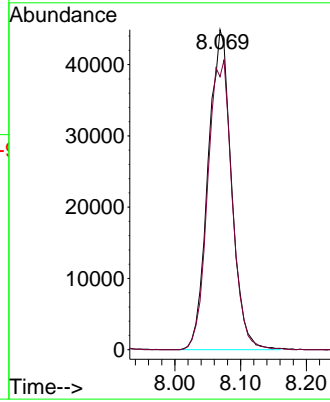


#31
 Carbon tetrachloride
 Concen: 23.928 ug/L
 RT: 8.069 min Scan# 1014
 Delta R.T. 0.006 min
 Lab File: VW029899.D
 Acq: 13 Aug 2024 16:03

Instrument :
 MSVOA_W
 ClientSampleId :

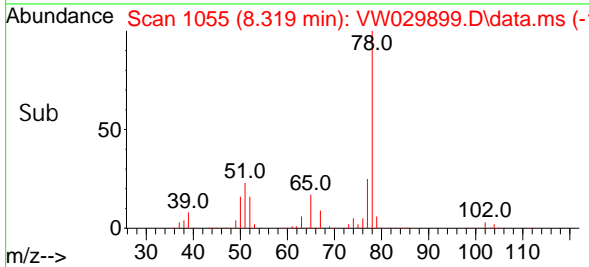
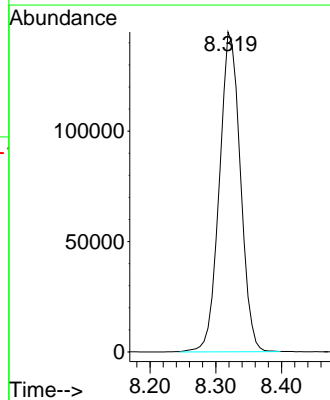
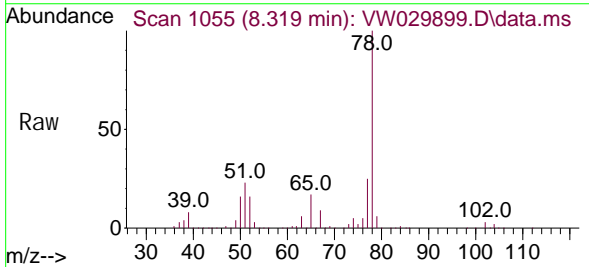


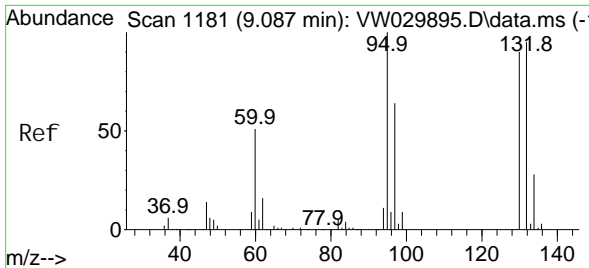
Tgt Ion: 117 Resp: 110995
 Ion Ratio Lower Upper
 117 100
 119 94.4 74.8 112.2



#33
 Benzene
 Concen: 23.141 ug/L
 RT: 8.319 min Scan# 1055
 Delta R.T. -0.001 min
 Lab File: VW029899.D
 Acq: 13 Aug 2024 16:03

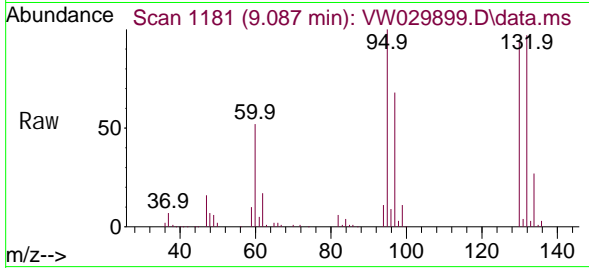
Tgt Ion: 78 Resp: 322322





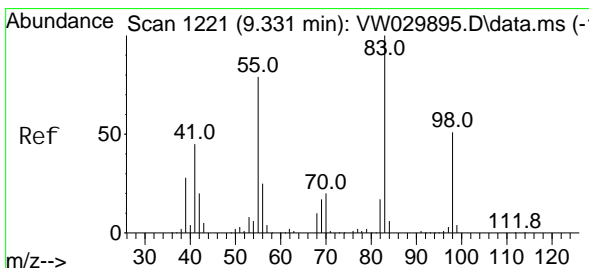
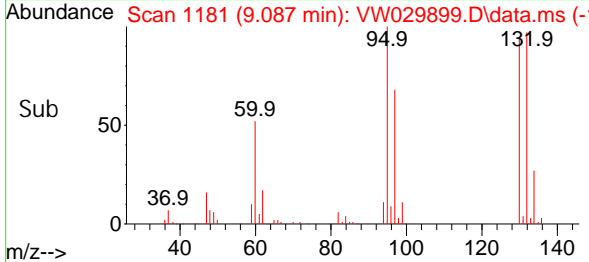
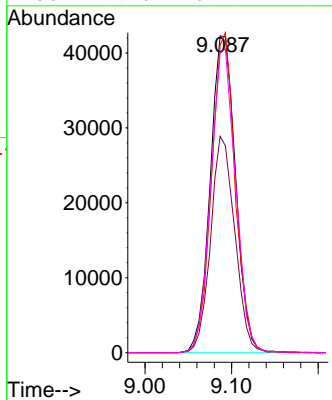
#34
 Trichloroethene
 Concen: 23.435 ug/L
 RT: 9.087 min Scan# 1181
 Delta R.T. -0.000 min
 Lab File: VW029899.D
 Acq: 13 Aug 2024 16:03

Instrument : MSVOA_W
 ClientSampleId :



Tgt Ion: 95 Resp: 85571

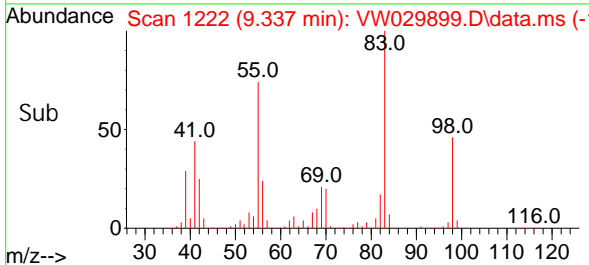
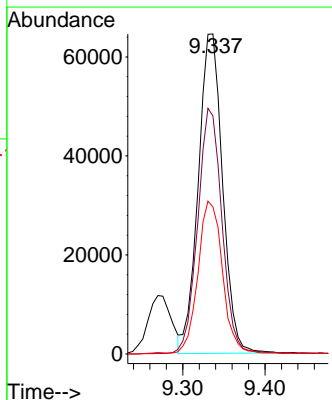
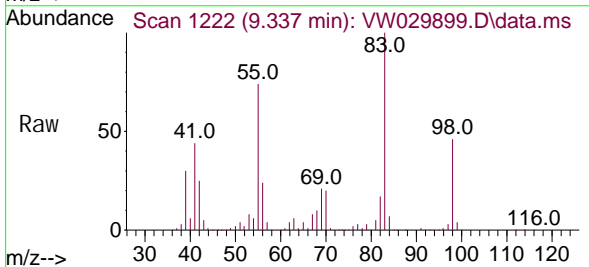
Ion	Ratio	Lower	Upper
95	100		
97	68.3	45.6	84.8
132	97.0	65.2	121.0
130	94.5	69.9	129.7

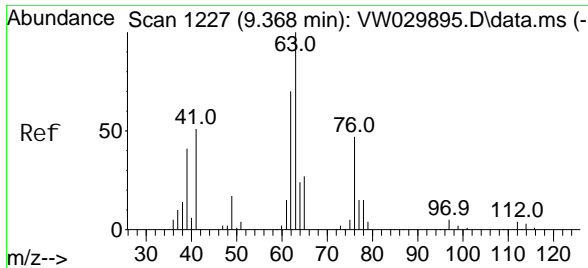


#35
 Methyl cycl ohexane
 Concen: 21.844 ug/L
 RT: 9.337 min Scan# 1222
 Delta R.T. 0.006 min
 Lab File: VW029899.D
 Acq: 13 Aug 2024 16:03

Tgt Ion: 83 Resp: 132906

Ion	Ratio	Lower	Upper
83	100		
55	77.0	67.4	101.2
98	47.8	36.7	55.1

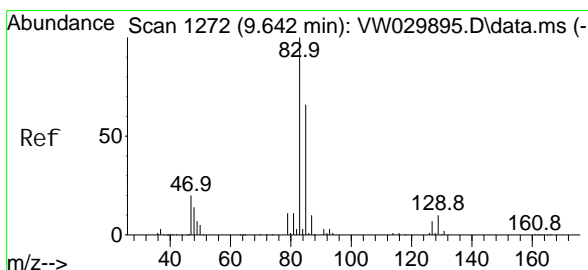
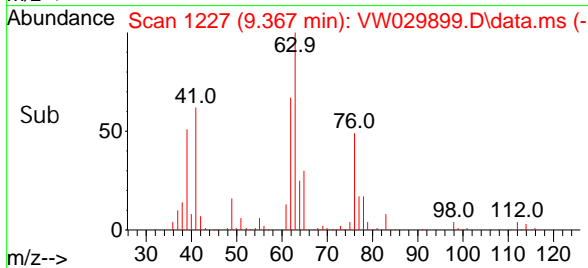
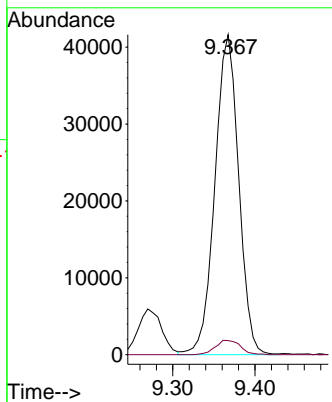
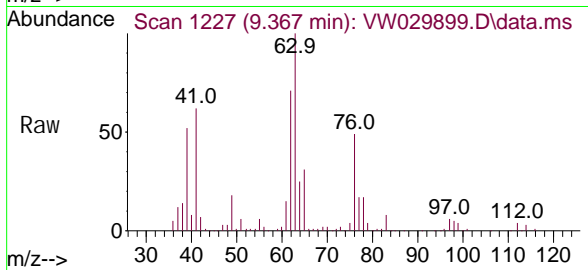




#37
 1, 2-Di chl oropropane
 Concen: 21.957 ug/L
 RT: 9.367 min Scan# 11
 Delta R.T. -0.001 min
 Lab File: VW029899.D
 Acq: 13 Aug 2024 16:03

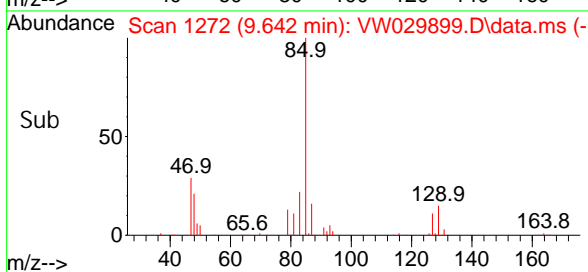
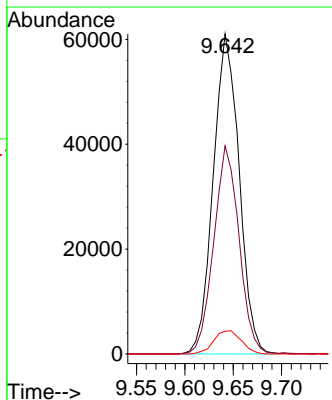
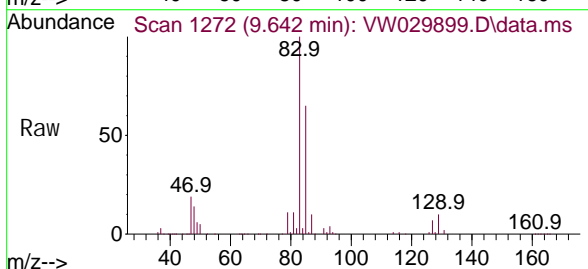
Instrument :
 MSVOA_W
 ClientSampleId :

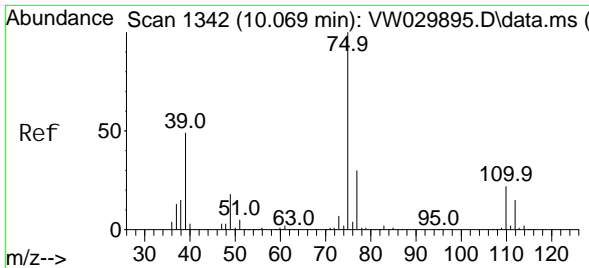
Tgt Ion: 63 Resp: 83811
 Ion Ratio Lower Upper
 63 100
 112 4.7 3.3 4.9



#38
 Bromodi chl oromethane
 Concen: 24.954 ug/L
 RT: 9.642 min Scan# 1272
 Delta R.T. -0.001 min
 Lab File: VW029899.D
 Acq: 13 Aug 2024 16:03

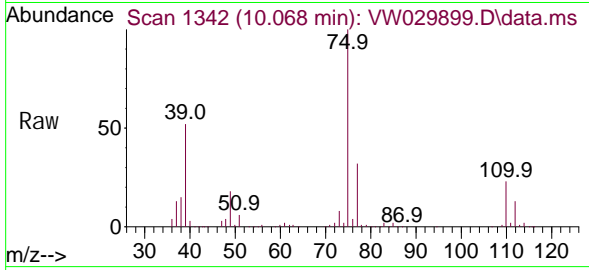
Tgt Ion: 83 Resp: 113423
 Ion Ratio Lower Upper
 83 100
 85 65.0 46.6 86.6
 127 7.1 5.9 8.9



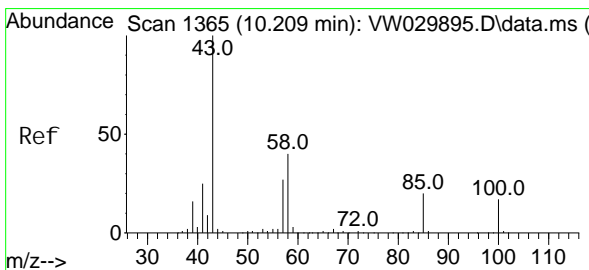
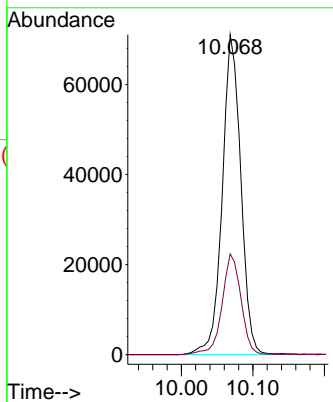
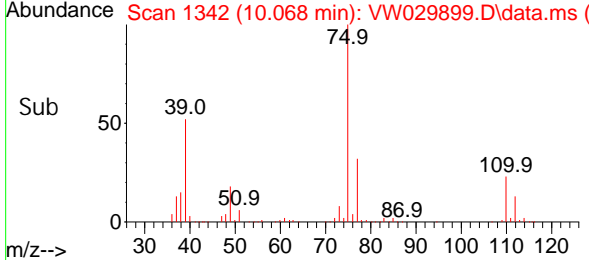


#39
 cis-1,3-Dichloropropene
 Concen: 23.039 ug/L
 RT: 10.068 min Scan# 1342
 Delta R.T. -0.001 min
 Lab File: VW029899.D
 Acq: 13 Aug 2024 16:03

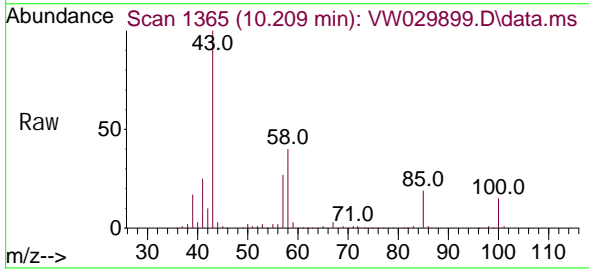
Instrument : MSVOA_W
 ClientSampleId :



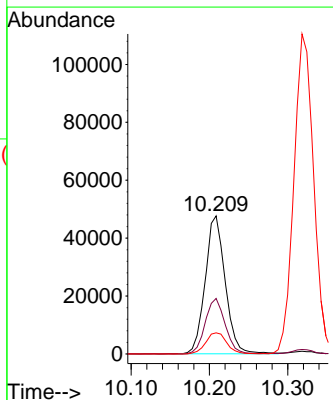
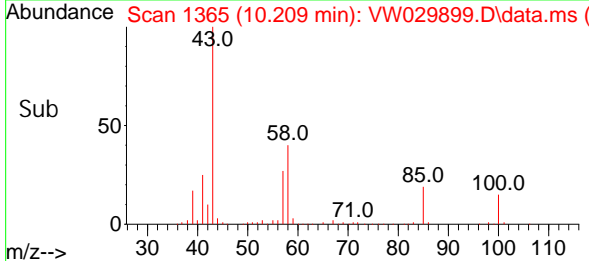
Tgt Ion: 75 Resp: 128069
 Ion Ratio Lower Upper
 75 100
 77 31.5 20.8 38.6

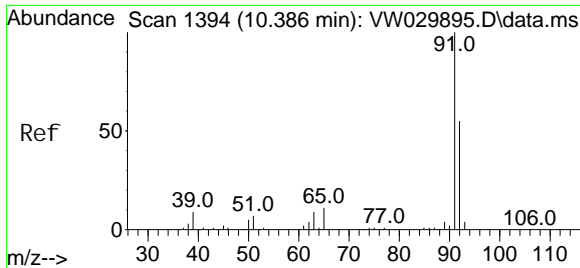


#40
 4-Methyl-2-pentanone
 Concen: 34.888 ug/L
 RT: 10.209 min Scan# 1365
 Delta R.T. -0.000 min
 Lab File: VW029899.D
 Acq: 13 Aug 2024 16:03



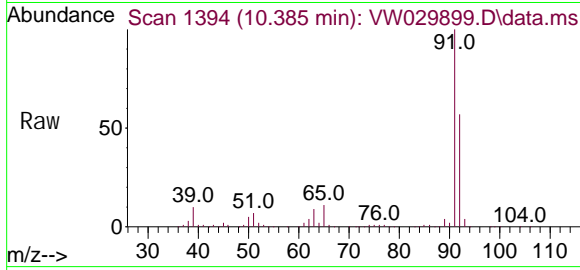
Tgt Ion: 43 Resp: 84585
 Ion Ratio Lower Upper
 43 100
 58 40.1 28.7 43.1
 100 16.2 10.0 15.0#



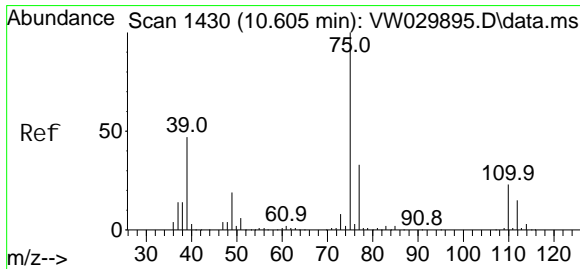
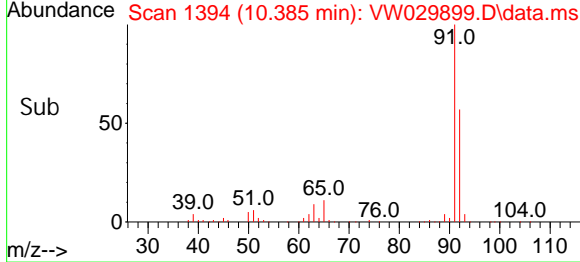
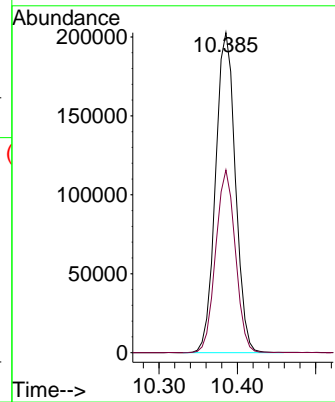


#42
 Tol uene
 Concen: 25.058 ug/L
 RT: 10.385 min Scan# 1394
 Delta R.T. -0.000 min
 Lab File: VW029899.D
 Acq: 13 Aug 2024 16:03

Instrument : MSVOA_W
 ClientSampleId :

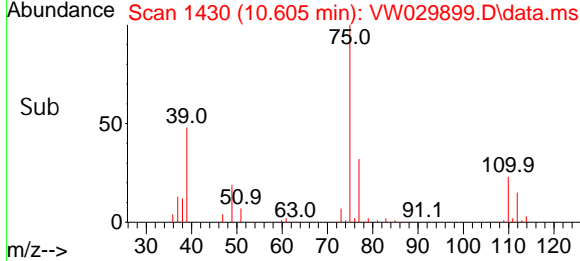
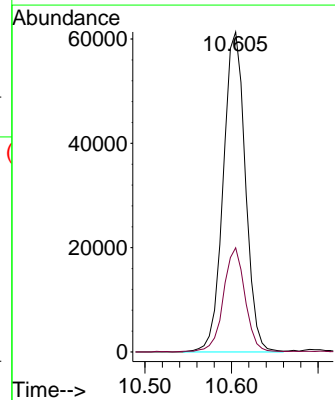
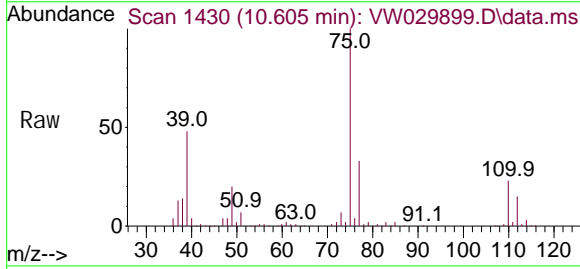


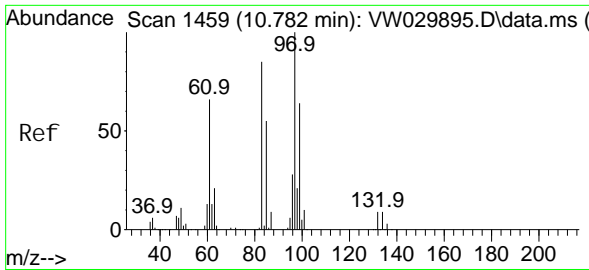
Tgt Ion: 91 Resp: 356263
 Ion Ratio Lower Upper
 91 100
 92 57.1 39.5 73.4



#44
 trans-1, 3-Di chl oroprene
 Concen: 23.585 ug/L
 RT: 10.605 min Scan# 1430
 Delta R.T. -0.001 min
 Lab File: VW029899.D
 Acq: 13 Aug 2024 16:03

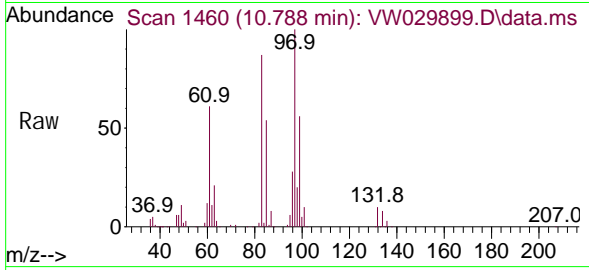
Tgt Ion: 75 Resp: 108838
 Ion Ratio Lower Upper
 75 100
 77 32.5 22.0 41.0



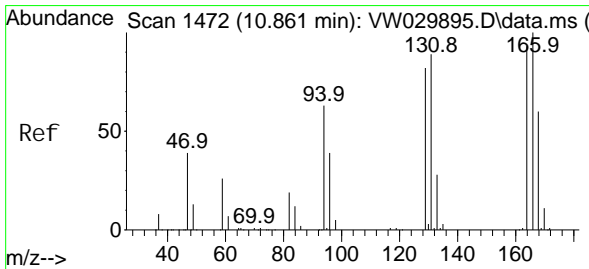
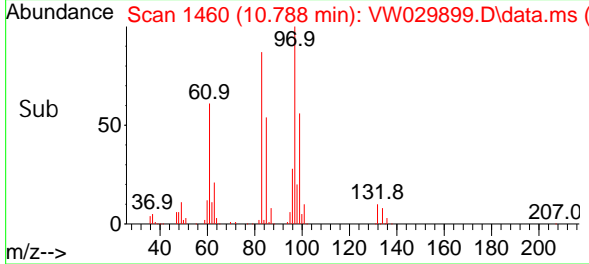
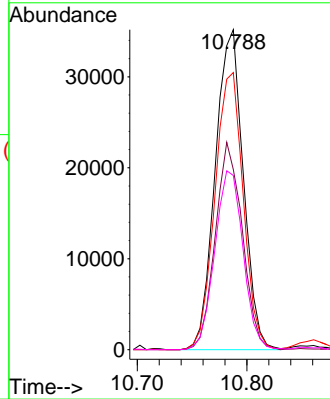


#45
 1,1,2-Trichloroethane
 Concen: 24.433 ug/L
 RT: 10.788 min Scan# 1459
 Delta R.T. 0.006 min
 Lab File: VW029899.D
 Acq: 13 Aug 2024 16:03

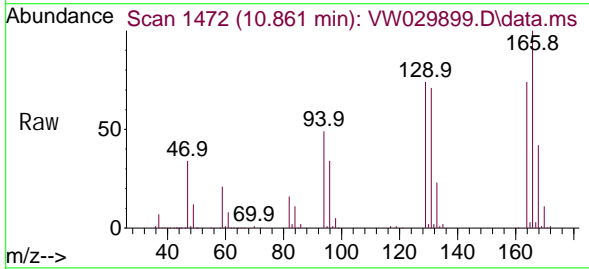
Instrument : MSVOA_W
 ClientSampleId :



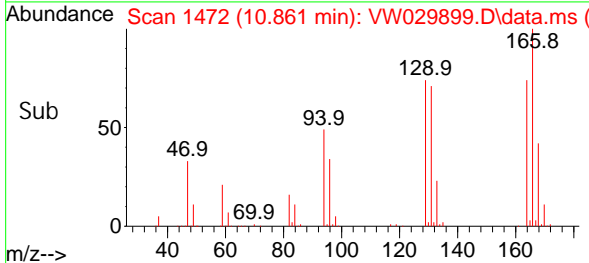
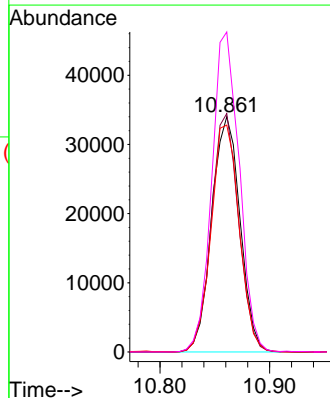
Tgt Ion: 97 Resp: 62652
 Ion Ratio Lower Upper
 97 100
 99 56.3 40.1 74.5
 83 86.6 58.5 108.7
 85 54.5 39.1 72.7

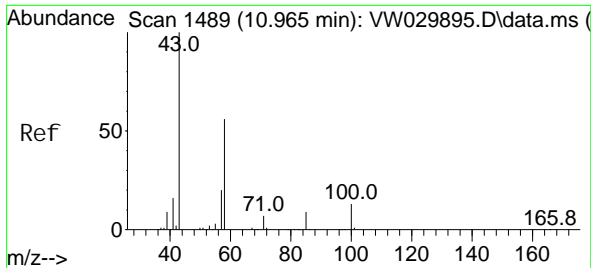


#46
 Tetrachloroethene
 Concen: 23.066 ug/L
 RT: 10.861 min Scan# 1472
 Delta R.T. -0.001 min
 Lab File: VW029899.D
 Acq: 13 Aug 2024 16:03



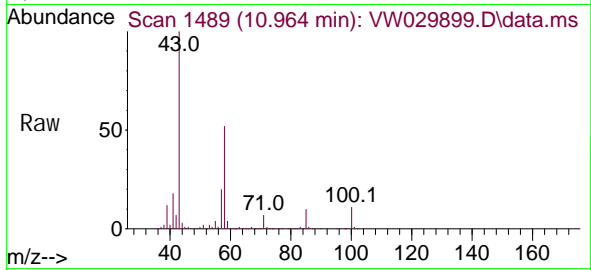
Tgt Ion: 164 Resp: 61214
 Ion Ratio Lower Upper
 164 100
 129 101.3 77.8 144.6
 131 96.4 70.9 131.7
 166 136.0 91.5 169.9



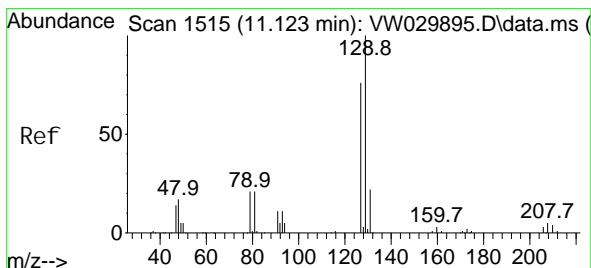
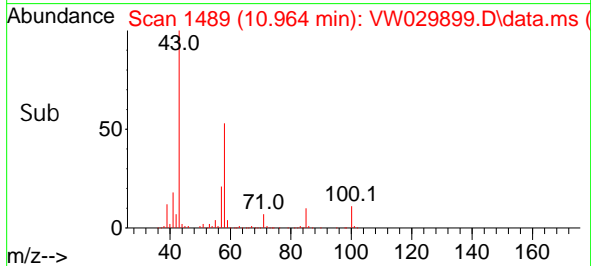
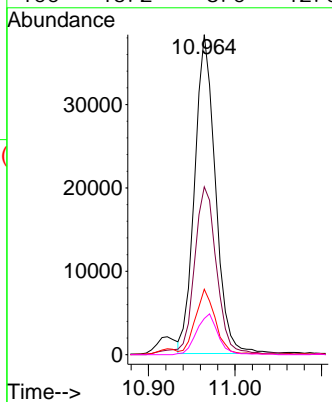


#48
 2-Hexanone
 Concen: 35.101 ug/L
 RT: 10.964 min Scan# 1489
 Delta R.T. -0.001 min
 Lab File: VW029899.D
 Acq: 13 Aug 2024 16:03

Instrument : MSVOA_W
 ClientSampleId :

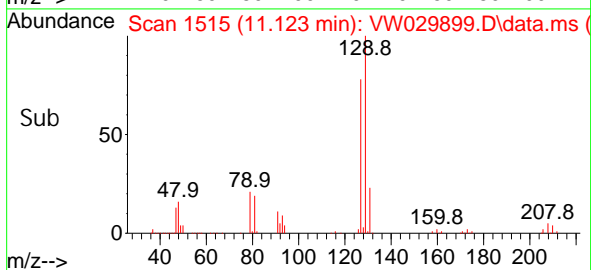
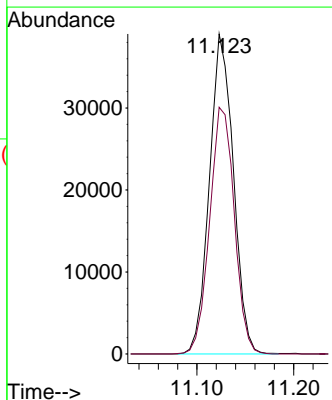
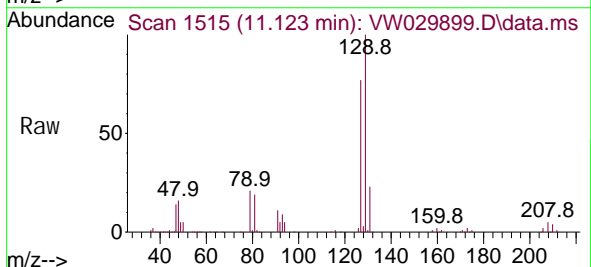


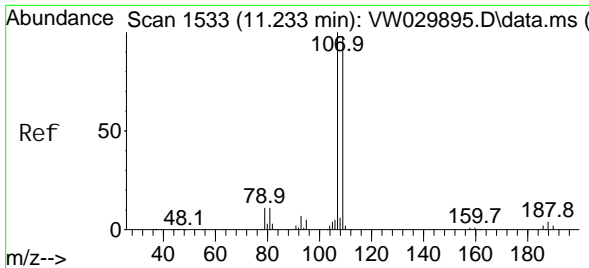
Tgt Ion: 43 Resp: 63737
 Ion Ratio Lower Upper
 43 100
 58 56.8 41.0 61.4
 57 20.3 14.1 21.1
 100 13.2 8.0 12.0#



#49
 Di bromochloromethane
 Concen: 25.165 ug/L
 RT: 11.123 min Scan# 1515
 Delta R.T. -0.001 min
 Lab File: VW029899.D
 Acq: 13 Aug 2024 16:03

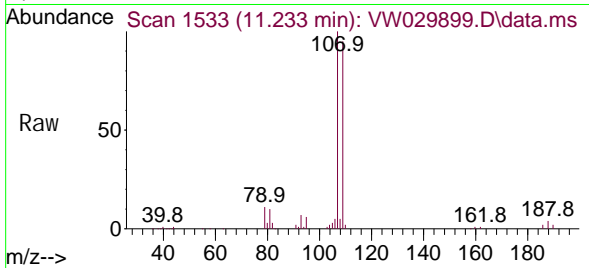
Tgt Ion: 129 Resp: 66990
 Ion Ratio Lower Upper
 129 100
 127 77.1 52.4 97.2





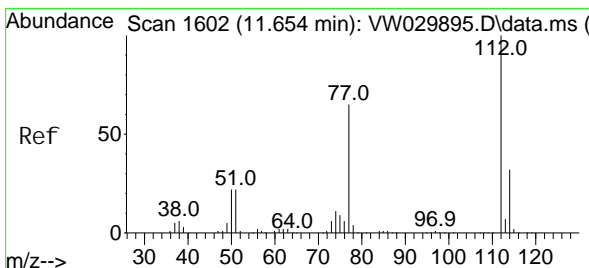
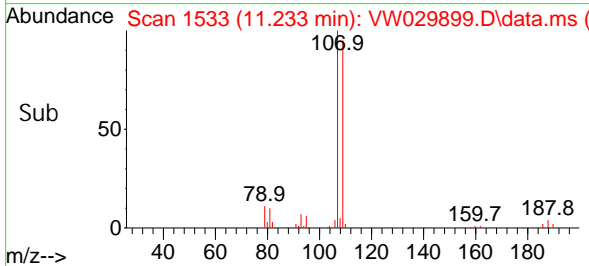
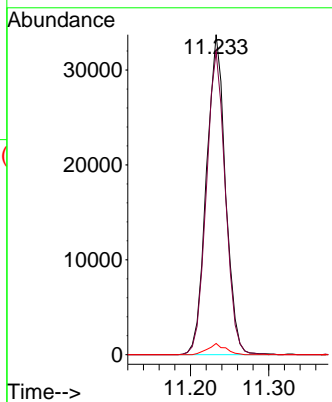
#50
 1, 2-Di bromoethane
 Concen: 23.985 ug/L
 RT: 11.233 min Scan# 1533
 Delta R.T. -0.001 min
 Lab File: VW029899.D
 Acq: 13 Aug 2024 16:03

Instrument : MSVOA_W
 ClientSampleId :



Tgt Ion: 107 Resp: 56906

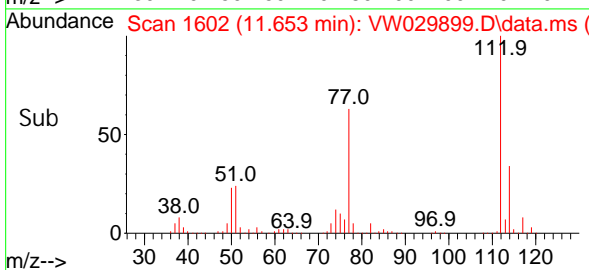
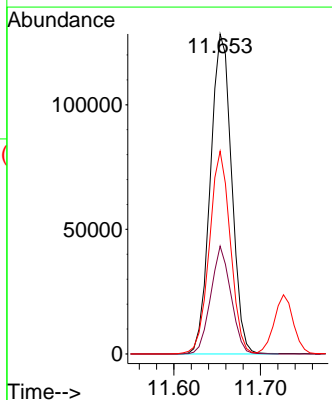
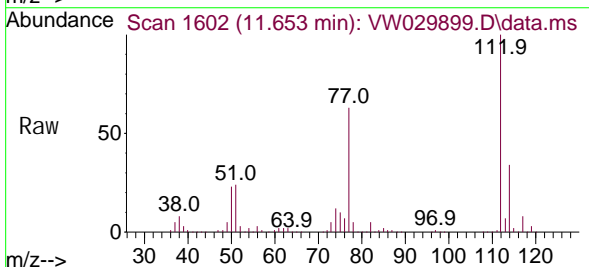
Ion	Ratio	Lower	Upper
107	100		
109	94.6	64.8	120.3
188	3.5	2.7	4.1

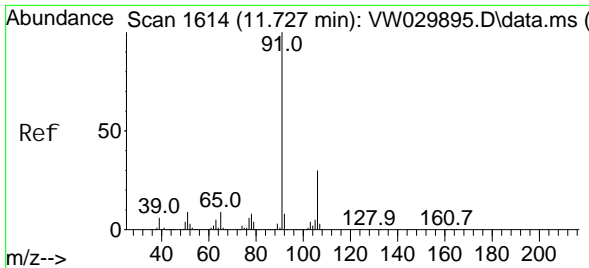


#51
 Chlorobenzene
 Concen: 24.763 ug/L
 RT: 11.653 min Scan# 1602
 Delta R.T. -0.001 min
 Lab File: VW029899.D
 Acq: 13 Aug 2024 16:03

Tgt Ion: 112 Resp: 218989

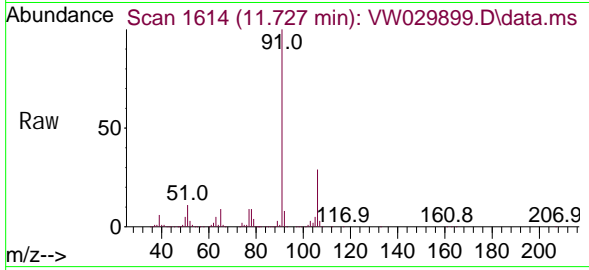
Ion	Ratio	Lower	Upper
112	100		
114	33.7	22.0	40.8
77	63.4	53.8	80.8



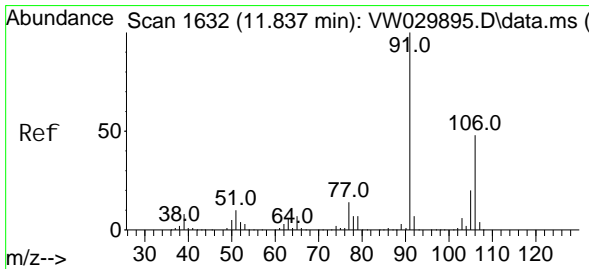
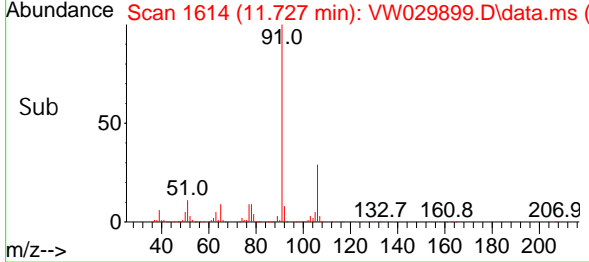
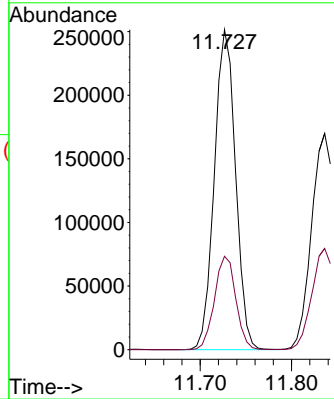


#52
 Ethyl benzene
 Concen: 25.251 ug/L
 RT: 11.727 min Scan# 1614
 Delta R.T. -0.001 min
 Lab File: VW029899.D
 Acq: 13 Aug 2024 16:03

Instrument : MSVOA_W
 ClientSampleId :

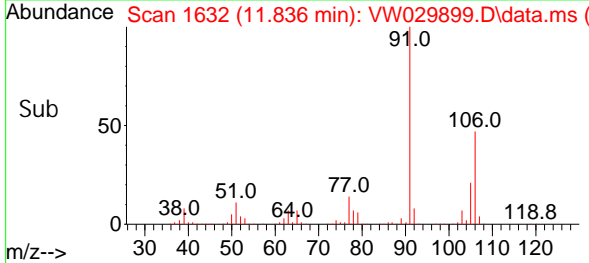
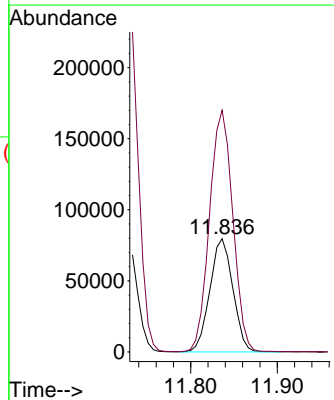
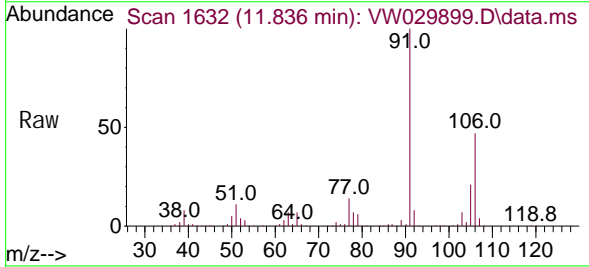


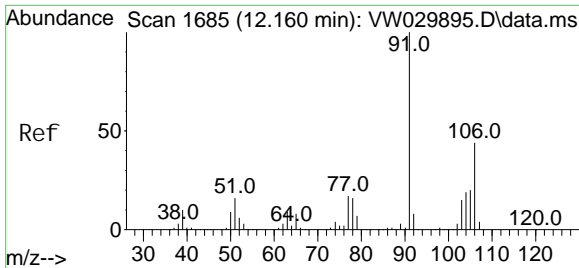
Tgt Ion: 91 Resp: 404962
 Ion Ratio Lower Upper
 91 100
 106 29.2 20.4 38.0



#53
 m, p-Xyl ene
 Concen: 24.928 ug/L
 RT: 11.836 min Scan# 1632
 Delta R.T. -0.001 min
 Lab File: VW029899.D
 Acq: 13 Aug 2024 16:03

Tgt Ion: 106 Resp: 147031
 Ion Ratio Lower Upper
 106 100
 91 213.5 151.4 281.2

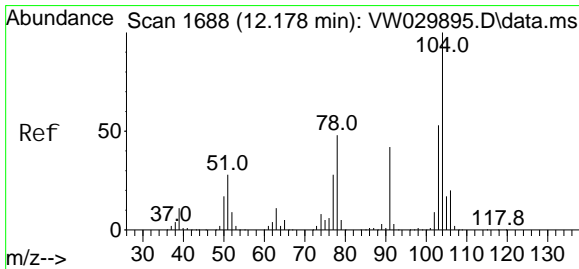
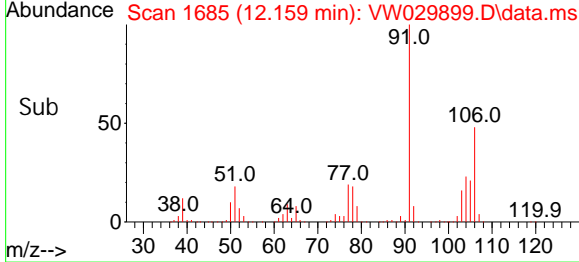
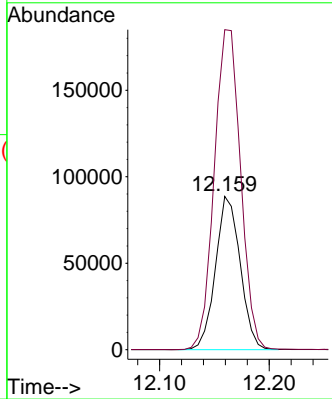
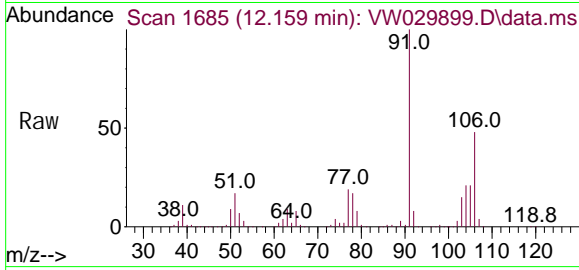




#54
 o-Xyl ene
 Concen: 25.577 ug/L
 RT: 12.159 min Scan# 1685
 Delta R.T. -0.001 min
 Lab File: VW029899.D
 Acq: 13 Aug 2024 16:03

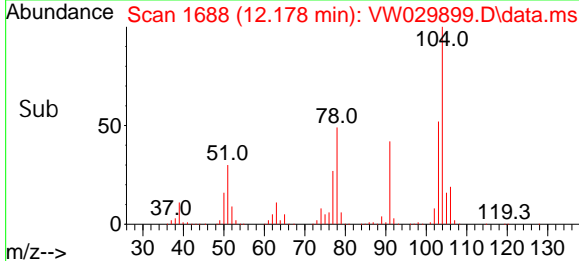
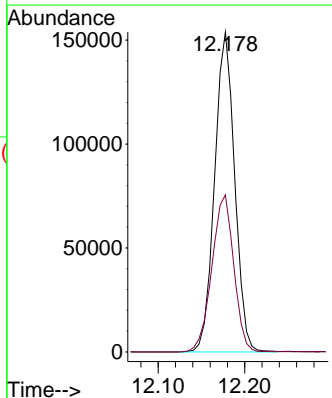
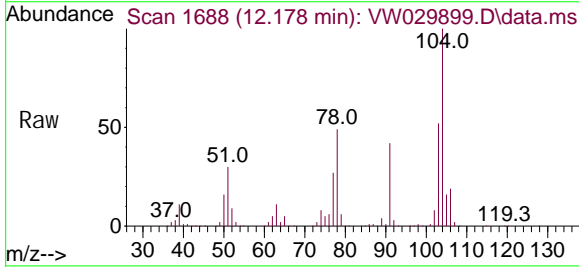
Instrument : MSVOA_W
 ClientSampleId :

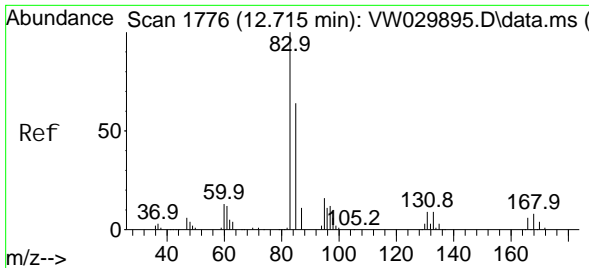
Tgt Ion: 106 Resp: 138919
 Ion Ratio Lower Upper
 106 100
 91 208.7 155.8 289.4



#55
 Styrene
 Concen: 26.282 ug/L
 RT: 12.178 min Scan# 1688
 Delta R.T. -0.001 min
 Lab File: VW029899.D
 Acq: 13 Aug 2024 16:03

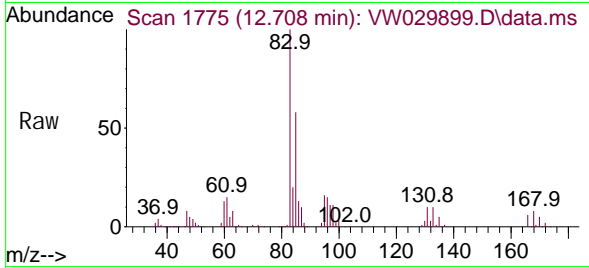
Tgt Ion: 104 Resp: 247441
 Ion Ratio Lower Upper
 104 100
 78 49.1 33.3 61.9



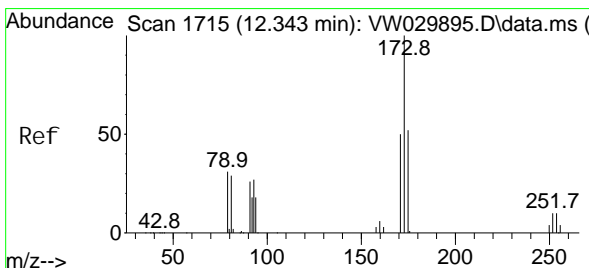
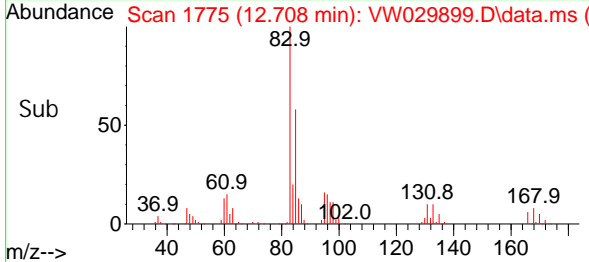
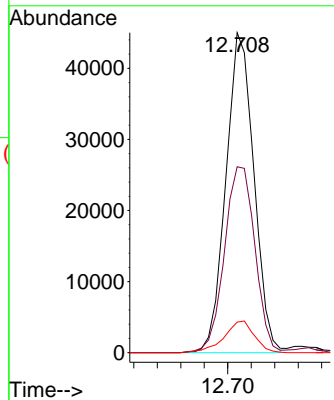


#57
 1, 1, 2, 2-Tetrachloroethane
 Concen: 23.672 ug/L
 RT: 12.708 min Scan# 1775
 Delta R.T. -0.007 min
 Lab File: VW029899.D
 Acq: 13 Aug 2024 16:03

Instrument : MSVOA_W
 ClientSampleId :

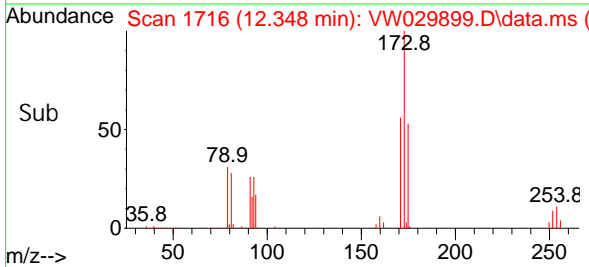
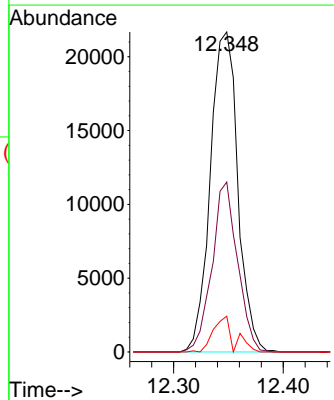
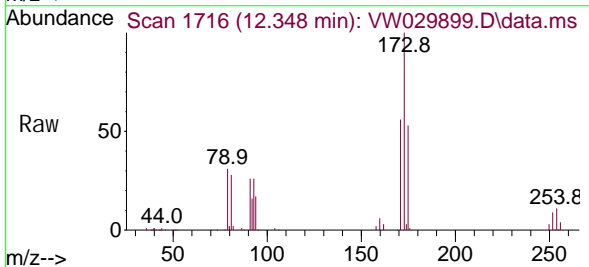


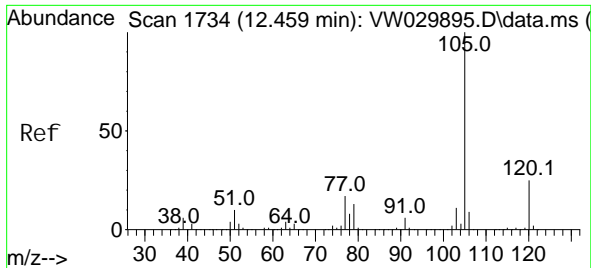
Tgt Ion: 83 Resp: 74504
 Ion Ratio Lower Upper
 83 100
 85 58.1 44.2 82.0
 131 9.6 6.2 9.2#



#59
 Bromoform
 Concen: 24.507 ug/L
 RT: 12.348 min Scan# 1716
 Delta R.T. 0.006 min
 Lab File: VW029899.D
 Acq: 13 Aug 2024 16:03

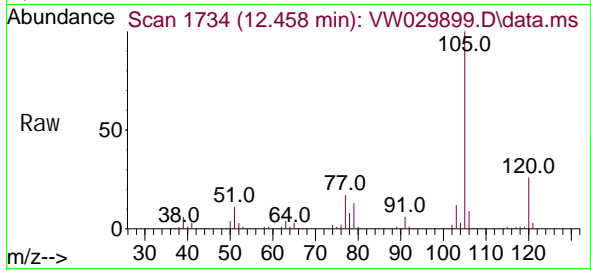
Tgt Ion: 173 Resp: 37826
 Ion Ratio Lower Upper
 173 100
 175 49.2 38.1 57.1
 254 6.3 7.8 11.6#



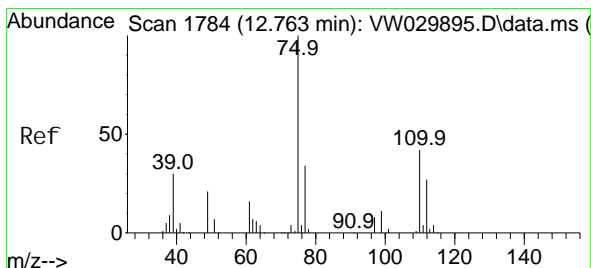
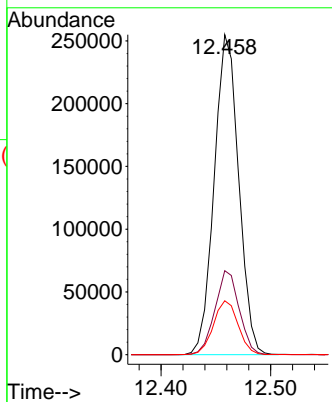
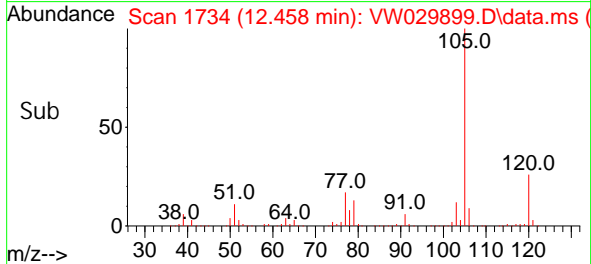


#60
 Isopropyl benzene
 Concen: 24.904 ug/L
 RT: 12.458 min Scan# 1734
 Delta R.T. -0.001 min
 Lab File: VW029899.D
 Acq: 13 Aug 2024 16:03

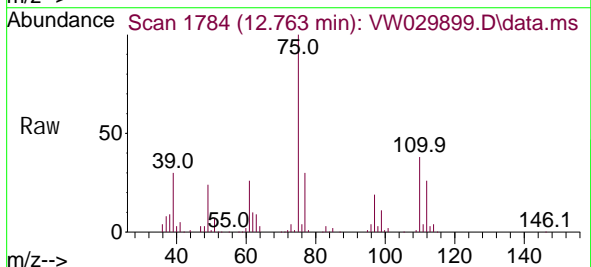
Instrument :
 MSVOA_W
 ClientSampleId :



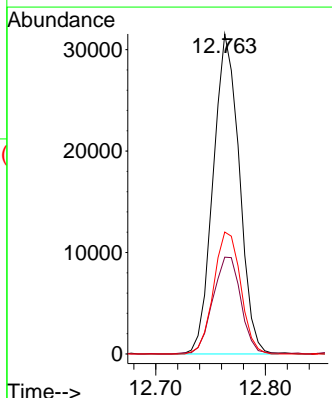
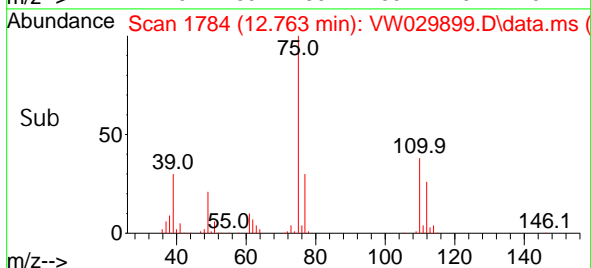
Tgt Ion: 105 Resp: 395311
 Ion Ratio Lower Upper
 105 100
 120 26.0 20.3 30.5
 77 17.1 14.0 21.0

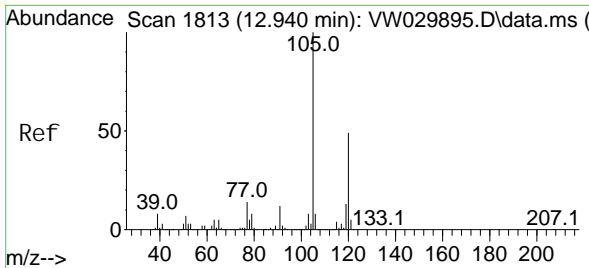


#61
 1,2,3-Trichloropropane
 Concen: 20.926 ug/L
 RT: 12.763 min Scan# 1784
 Delta R.T. -0.001 min
 Lab File: VW029899.D
 Acq: 13 Aug 2024 16:03



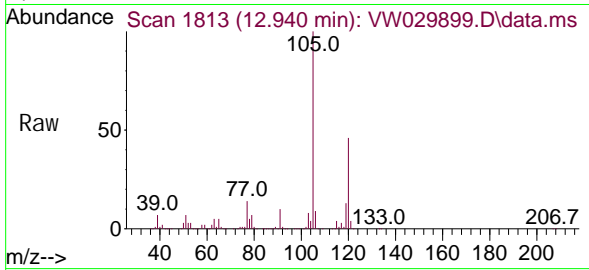
Tgt Ion: 75 Resp: 52206
 Ion Ratio Lower Upper
 75 100
 77 32.4 25.4 38.0
 110 39.5 28.6 43.0



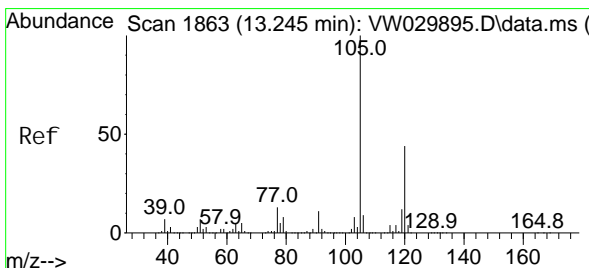
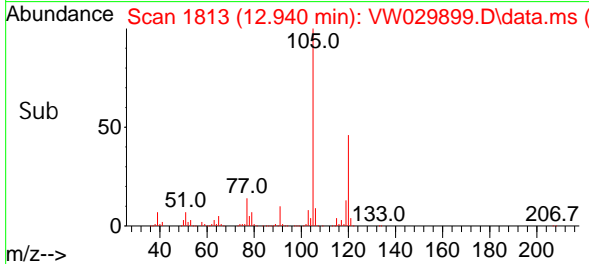
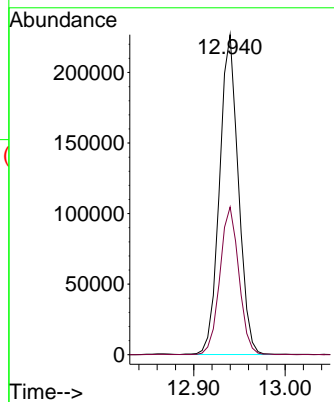


#62
 1, 3, 5-Tri methyl benzene
 Concen: 27.526 ug/L
 RT: 12.940 min Scan# 1813
 Delta R.T. -0.000 min
 Lab File: VW029899.D
 Acq: 13 Aug 2024 16:03

Instrument : MSVOA_W
 ClientSampleId :

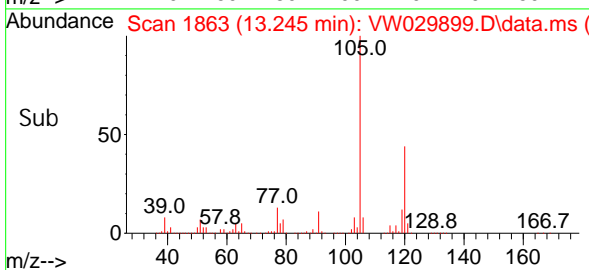
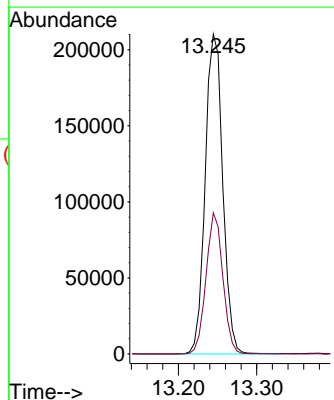
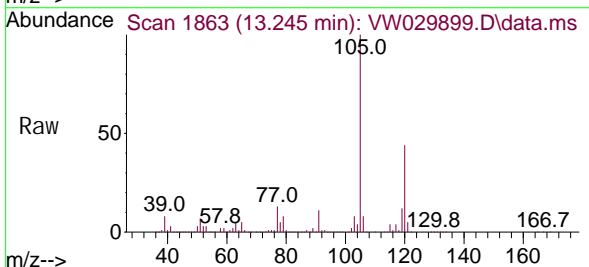


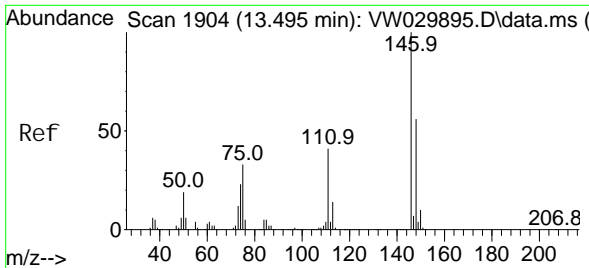
Tgt Ion: 105 Resp: 324768
 Ion Ratio Lower Upper
 105 100
 120 46.6 38.2 57.2



#63
 1, 2, 4-Tri methyl benzene
 Concen: 25.885 ug/L
 RT: 13.245 min Scan# 1863
 Delta R.T. -0.001 min
 Lab File: VW029899.D
 Acq: 13 Aug 2024 16:03

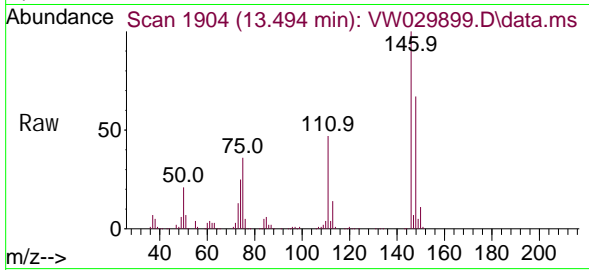
Tgt Ion: 105 Resp: 326621
 Ion Ratio Lower Upper
 105 100
 120 42.3 35.4 53.0



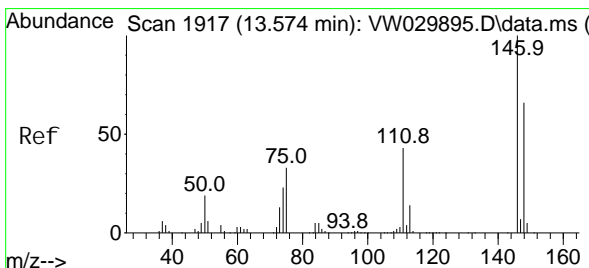
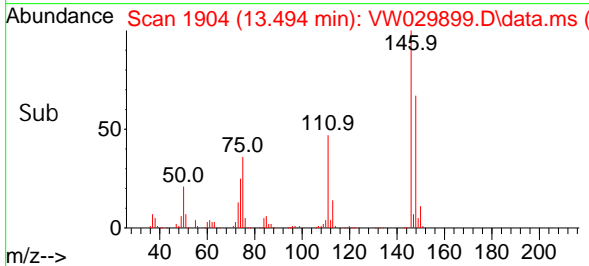
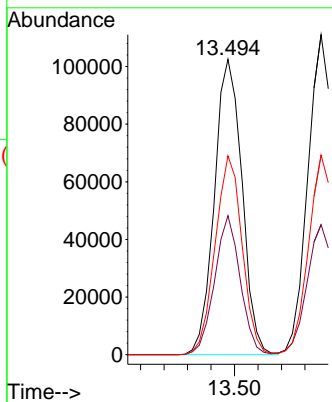


#64
 1,3-Di chl orobenzene
 Concen: 24.706 ug/L
 RT: 13.494 min Scan# 1904
 Delta R.T. -0.001 min
 Lab File: VW029899.D
 Acq: 13 Aug 2024 16:03

Instrument : MSVOA_W
 ClientSampleId :

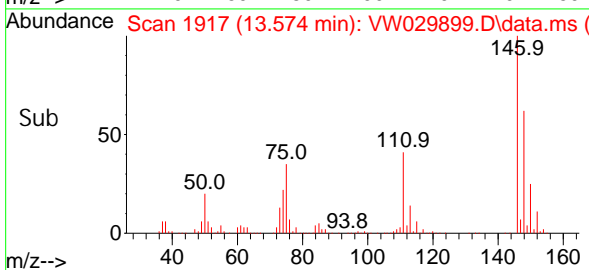
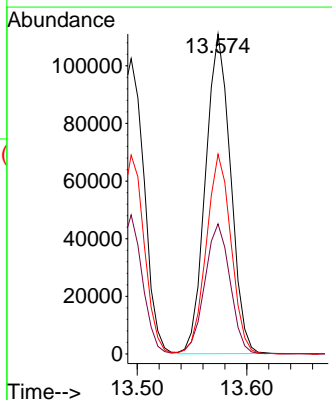
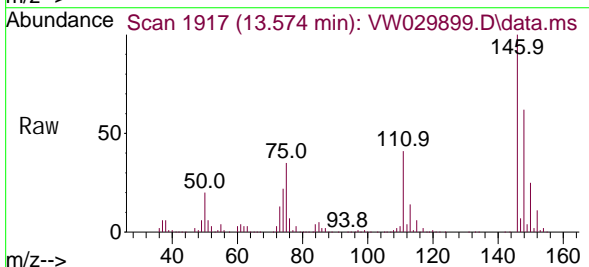


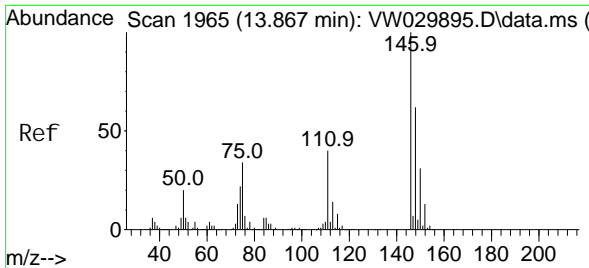
Tgt Ion: 146 Resp: 167320
 Ion Ratio Lower Upper
 146 100
 111 47.1 28.7 53.3
 148 67.3 43.4 80.6



#65
 1,4-Di chl orobenzene
 Concen: 25.353 ug/L
 RT: 13.574 min Scan# 1917
 Delta R.T. -0.000 min
 Lab File: VW029899.D
 Acq: 13 Aug 2024 16:03

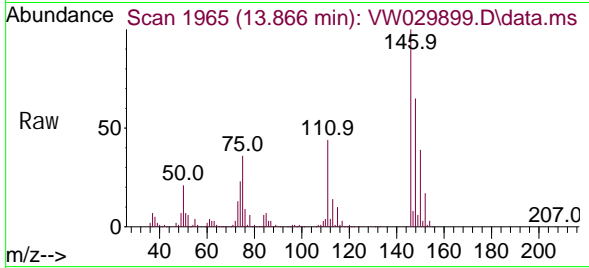
Tgt Ion: 146 Resp: 176371
 Ion Ratio Lower Upper
 146 100
 111 40.7 30.1 55.9
 148 62.4 45.4 84.4





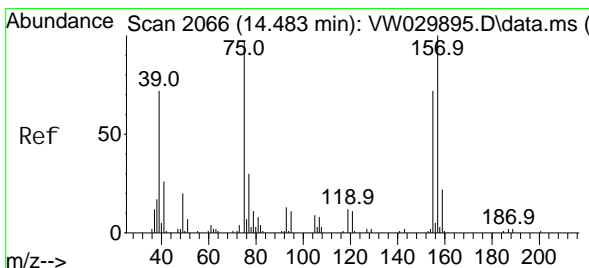
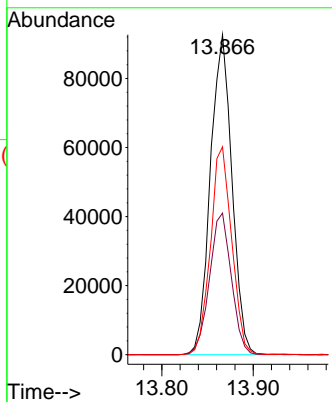
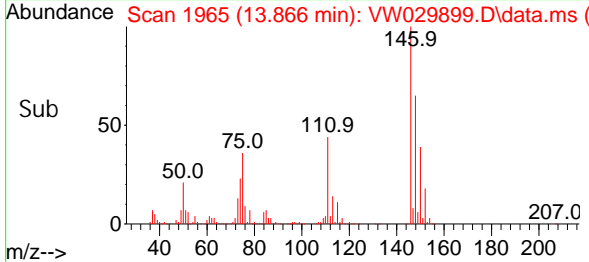
#67
 1,2-Dichlorobenzene
 Concen: 24.584 ug/L
 RT: 13.866 min Scan# 1965
 Delta R.T. -0.001 min
 Lab File: VW029899.D
 Acq: 13 Aug 2024 16:03

Instrument : MSVOA_W
 ClientSampleId :

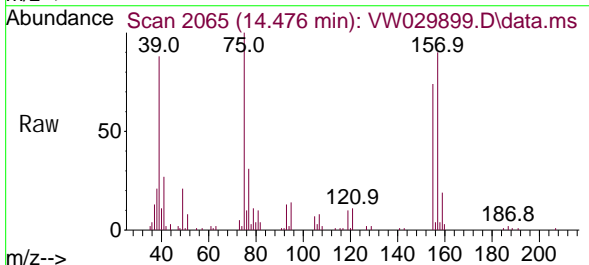


Tgt Ion: 146 Resp: 151577

Ion	Ratio	Lower	Upper
146	100		
111	44.3	35.8	53.8
148	65.0	52.6	78.8

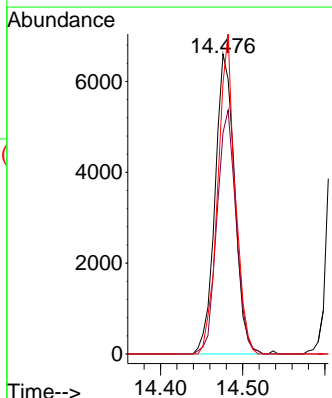
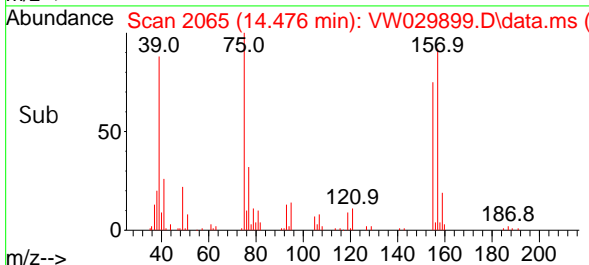


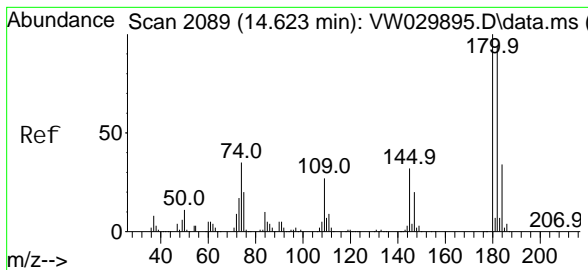
#68
 1,2-Dibromo-3-chloropropane
 Concen: 19.344 ug/L
 RT: 14.476 min Scan# 2065
 Delta R.T. -0.007 min
 Lab File: VW029899.D
 Acq: 13 Aug 2024 16:03



Tgt Ion: 75 Resp: 10958

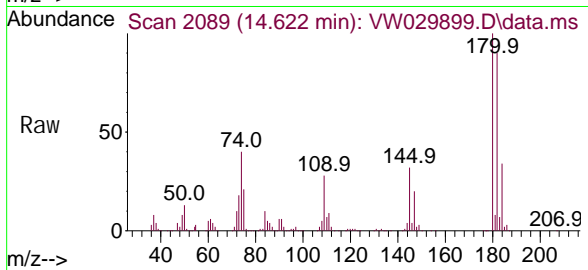
Ion	Ratio	Lower	Upper
75	100		
155	73.8	47.8	71.6#
157	90.4	63.7	95.5



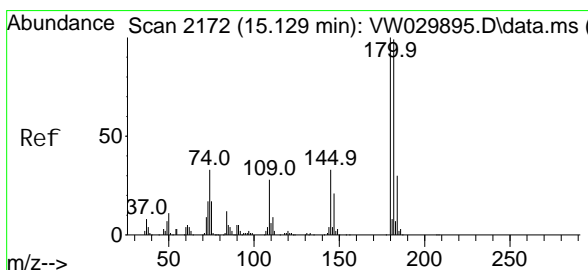
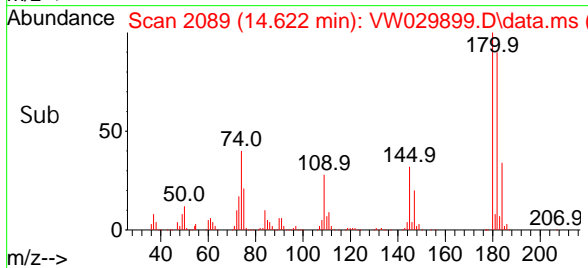
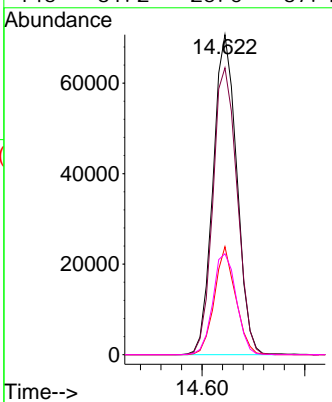


#69
 1, 3, 5-Tri chlorobenzene
 Concen: 24.414 ug/L
 RT: 14.622 min Scan# 2089
 Delta R.T. -0.001 min
 Lab File: VW029899.D
 Acq: 13 Aug 2024 16:03

Instrument : MSVOA_W
 ClientSampleId :

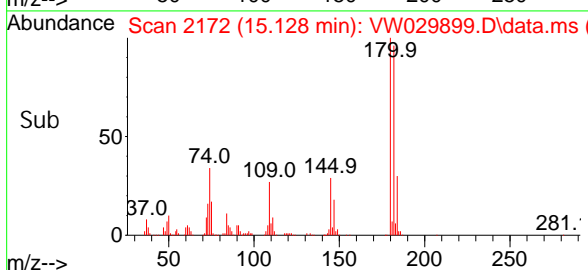
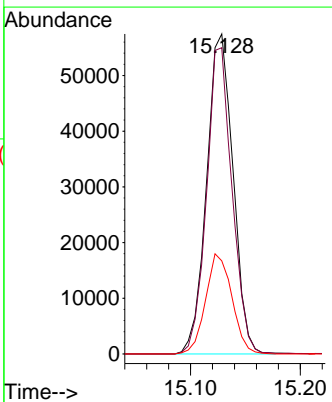
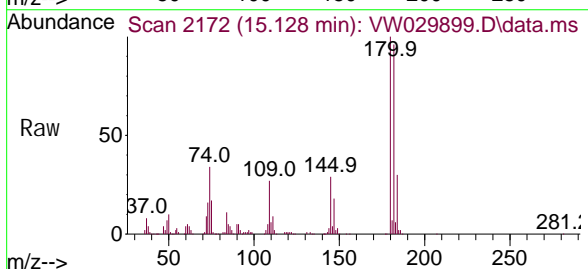


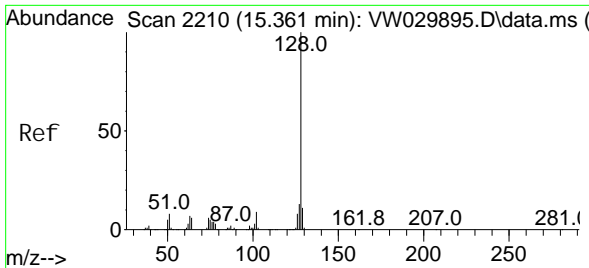
Tgt Ion: 180 Resp: 113125
 Ion Ratio Lower Upper
 180 100
 182 91.6 72.7 109.1
 184 30.1 23.3 34.9
 145 31.2 25.0 37.4



#70
 1, 2, 4-tri chlorobenzene
 Concen: 24.688 ug/L
 RT: 15.128 min Scan# 2172
 Delta R.T. -0.001 min
 Lab File: VW029899.D
 Acq: 13 Aug 2024 16:03

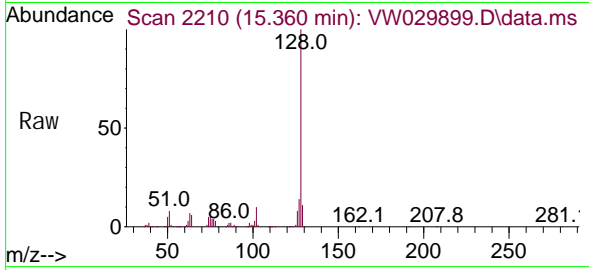
Tgt Ion: 180 Resp: 96372
 Ion Ratio Lower Upper
 180 100
 182 92.3 80.2 120.4
 145 31.1 26.3 39.5



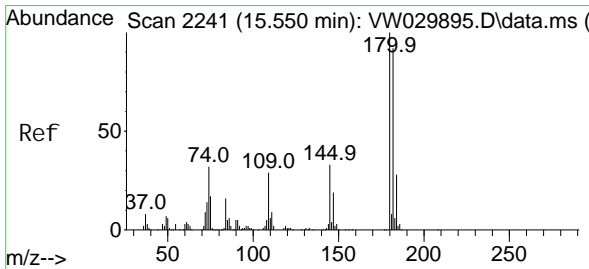
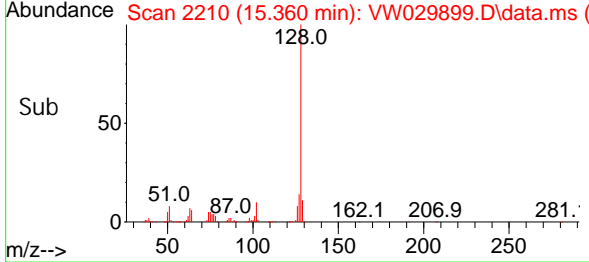
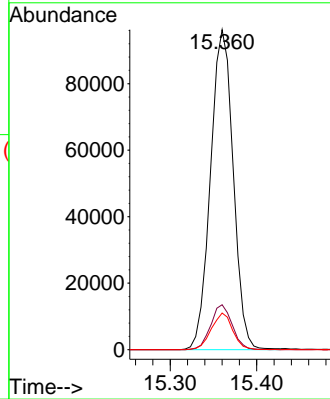


#71
 Naphthalene
 Concen: 23.569 ug/L
 RT: 15.360 min Scan# 2210
 Delta R.T. -0.001 min
 Lab File: VW029899.D
 Acq: 13 Aug 2024 16:03

Instrument : MSVOA_W
 ClientSampleId :



Tgt Ion: 128 Resp: 175550
 Ion Ratio Lower Upper
 128 100
 127 13.3 10.7 16.1
 129 10.8 8.9 13.3



#72
 1,2,3-Trichlorobenzene
 Concen: 23.844 ug/L
 RT: 15.549 min Scan# 2241
 Delta R.T. -0.001 min
 Lab File: VW029899.D
 Acq: 13 Aug 2024 16:03

Tgt Ion: 180 Resp: 84246
 Ion Ratio Lower Upper
 180 100
 182 97.0 74.0 111.0
 145 33.3 27.5 41.3

