

Data File : VW004663.D
 Acq On : 14 Aug 2018 11:29
 Operator : SY/AP
 Sample : VSTD10093
 Misc : 5.00G/10ML/MSVOA_W/SOIL
 ALS Vial : 1 Sample Multiplier: 1

Instrument :
 MSVOA_W
 ClientSampleId :
 VSTD10094

Quant Time: Aug 14 11:48:02 2018
 Quant Method : Z:\VOASRV\HPCHEM1\MSVOA_W\METHOD\SOM2WLM081418S.M
 Quant Title : VOC Analysis
 QLast Update : Tue Aug 14 11:11:08 2018
 Response via : Initial Calibration

Internal Standards	R.T.	QIon	Response	Conc	Units	Dev(Min)
1) 1,4-Difluorobenzene	8.85	114	954964	25.00	ug/L	0.00
28) Chlorobenzene-d5	11.64	117	892022	25.00	ug/L	0.00
60) 1,4-Dichlorobenzene-d4	13.57	152	468016	25.00	ug/L	0.00

System Monitoring Compounds

4) Vinyl Chloride-d3	2.36	65	1554941	130.91	ug/L	0.00
7) Chloroethane-d5	2.89	69	1236725	123.76	ug/L	0.00
10) 1,1-Dichloroethene-d2	4.02	63	2896679	120.09	ug/L	0.00
20) 2-Butanone-d5	7.09	46	984280	187.94	ug/L	0.00
24) Chloroform-d	7.65	84	2607639	100.87	ug/L	0.00
26) 1,2-Dichloroethane-d4	8.31	65	1398503	97.03	ug/L	0.00
29) Benzene-d6	8.28	84	5522106	116.36	ug/L	0.00
33) 1,2-Dichloropropane-d6	9.28	67	1698197	109.50	ug/L	0.00
37) Toluene-d8	10.33	98	5021194	120.03	ug/L	0.00
38) trans-1,3-Dichloropropene-	10.59	79	731868	114.75	ug/L	0.00
39) 2-Hexanone-d5	10.93	63	835014	221.16	ug/L	0.00
48) 1,1,2,2-Tetrachloroethane-	12.70	84	1582247	94.08	ug/L	0.00
61) 1,2-Dichlorobenzene-d4	13.86	152	1861298	105.89	ug/L	0.00

Target Compounds

						Qvalue
2) Dichlorodifluoromethane	2.01	85	1289351	129.859	ug/L	99
3) Chloromethane	2.22	50	1551256	118.286	ug/L	99
5) Vinyl chloride	2.37	62	1960969	114.587	ug/L	99
6) Bromomethane	2.78	94	1151066	116.299	ug/L	99
8) Chloroethane	2.93	64	1123796	109.460	ug/L	94
9) Trichlorofluoromethane	3.26	101	1056695	135.371	ug/L	100
11) 1,1,2-Trichloro-1,2,2-trif	4.06	101	1501021	110.748	ug/L	99
12) 1,1-Dichloroethene	4.04	96	1459800	110.246	ug/L	97
13) Acetone	4.14	43	710451	156.575	ug/L	99
14) Carbon disulfide	4.38	76	5109018	125.789	ug/L	99
15) Methyl Acetate	4.67	43	864198	93.445	ug/L	99
16) Methylene chloride	4.92	84	1492581	78.690	ug/L	99
17) Methyl tert-butyl Ether	5.43	73	2025957	113.033	ug/L	99
18) trans-1,2-Dichloroethene	5.42	96	1508538	111.402	ug/L	97
19) 1,1-Dichloroethane	6.21	63	2600345	101.197	ug/L	98
21) 2-Butanone	7.18	43	1144995	184.357	ug/L	99
22) cis-1,2-Dichloroethene	7.17	96	1643425	111.193	ug/L	99
23) Bromochloromethane	7.52	128	719152	101.660	ug/L	96
25) Chloroform	7.68	83	2559949	97.601	ug/L	99
27) 1,2-Dichloroethane	8.40	62	1670747	94.819	ug/L	99
30) Cyclohexane	7.96	56	2816427	133.506	ug/L	99
31) 1,1,1-Trichloroethane	7.88	97	2101491	110.884	ug/L	99
32) Carbon tetrachloride	8.07	117	2021924	110.700	ug/L	100
34) Benzene	8.33	78	6026913	109.584	ug/L	100
35) Trichloroethene	9.10	95	1525124	110.247	ug/L	99
36) Methylcyclohexane	9.34	83	3100289	127.667	ug/L	99
40) 1,2-Dichloropropane	9.37	63	1531843	105.165	ug/L	99
41) Bromodichloromethane	9.65	83	1814609	103.710	ug/L	100
42) cis-1,3-Dichloropropene	10.08	75	2334454	117.157	ug/L	98
43) 4-Methyl-2-pentanone	10.21	43	2315891	212.046	ug/L	99

Data File : VW004663.D
 Acq On : 14 Aug 2018 11:29
 Operator : SY/AP
 Sample : VSTD10093
 Misc : 5.00G/10ML/MSVOA_W/SOIL
 ALS Vial : 1 Sample Multiplier: 1

Instrument :
 MSVOA_W
 ClientSampleId :
 VSTD10094

Quant Time: Aug 14 11:48:02 2018
 Quant Method : Z:\VOASRV\HPCHEM1\MSVOA_W\METHOD\SOM2WLM081418S.M
 Quant Title : VOC Analysis
 QLast Update : Tue Aug 14 11:11:08 2018
 Response via : Initial Calibration

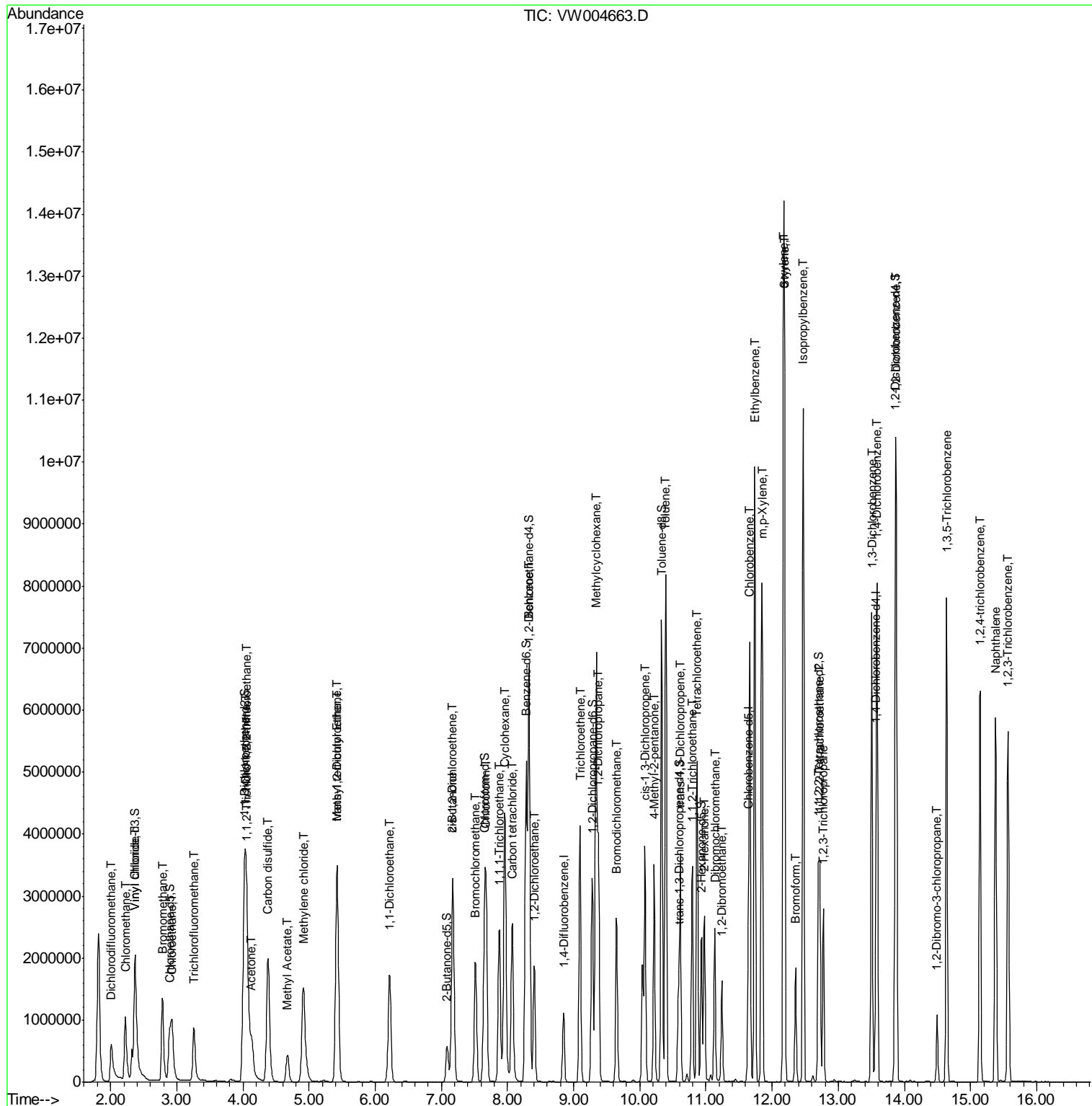
Internal Standards	R.T.	QIon	Response	Conc	Units	Dev(Min)
44) Toluene	10.39	91	6168985	111.462	ug/L	98
45) trans-1,3-Dichloropropene	10.61	75	2012895	112.381	ug/L	98
46) 1,1,2-Trichloroethane	10.79	97	1130178	99.805	ug/L	99
47) Tetrachloroethene	10.87	164	1229381	112.318	ug/L	99
49) 2-Hexanone	10.98	43	1688247	205.698	ug/L	99
50) Dibromochloromethane	11.13	129	1339496	106.633	ug/L	99
51) 1,2-Dibromoethane	11.24	107	1131406	104.232	ug/L	98
52) Chlorobenzene	11.66	112	3952361	105.595	ug/L	99
53) Ethylbenzene	11.74	91	7012079	112.747	ug/L	99
54) m,p-Xylene	11.85	106	2699140	116.324	ug/L	100
55) o-xylene	12.17	106	2623171	119.311	ug/L	96
56) Styrene	12.19	104	4482659	117.007	ug/L	99
57) Isopropylbenzene	12.47	105	7050937	118.479	ug/L	99
58) 1,1,2,2-Tetrachloroethane	12.72	83	1592109	96.870	ug/L	99
59) 1,2,3-Trichloropropane	12.77	75	1175686	95.778	ug/L	100
62) Bromoform	12.35	173	872300	102.552	ug/L	99
63) 1,3-Dichlorobenzene	13.51	146	3172498	108.938	ug/L	99
64) 1,4-Dichlorobenzene	13.59	146	3226111	103.077	ug/L	99
65) 1,2-Dichlorobenzene	13.88	146	2998101	102.748	ug/L	99
66) 1,2-Dibromo-3-chloropropan	14.49	75	276295	92.179	ug/L	95
67) 1,3,5-Trichlorobenzene	14.64	180	2515221	108.951	ug/L	99
68) 1,2,4-trichlorobenzene	15.15	180	2144932	114.845	ug/L	99
69) Naphthalene	15.38	128	4973919	116.778	ug/L	100
70) 1,2,3-Trichlorobenzene	15.57	180	2009342	110.474	ug/L	99

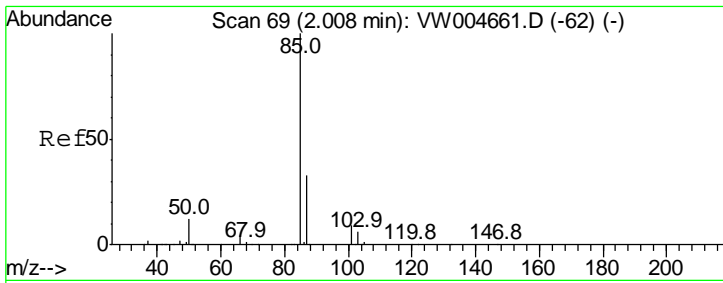
(#) = qualifier out of range (m) = manual integration (+) = signals summed

Data File : VW004663.D
Acq On : 14 Aug 2018 11:29
Operator : SY/AP
Sample : VSTD10093
Misc : 5.00G/10ML/MSVOA_W/SOIL
ALS Vial : 1 Sample Multiplier: 1

Instrument :
MSVOA_W
Client Sampled :
VSTD10094

Quant Time: Aug 14 11:48:02 2018
Quant Method : Z:\VOASRV\HPCHEM1\MSVOA_W\METHOD\SOM2WLM081418S.M
Quant Title : VOC Analysis
QLast Update : Tue Aug 14 11:11:08 2018
Response via : Initial Calibration

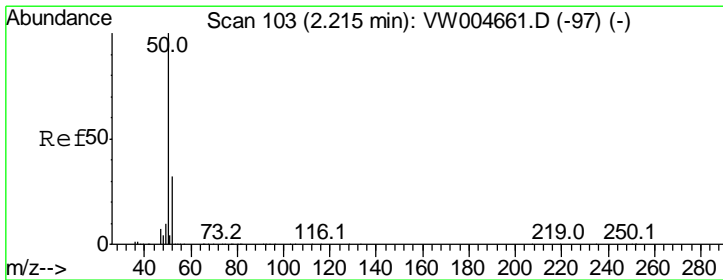
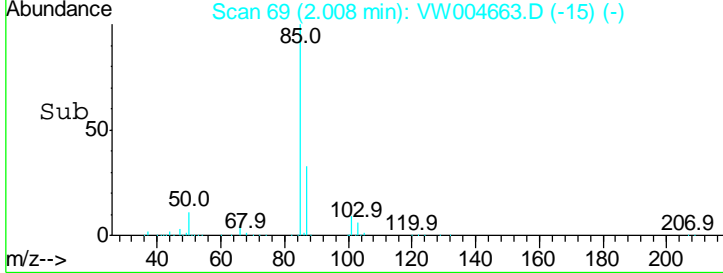
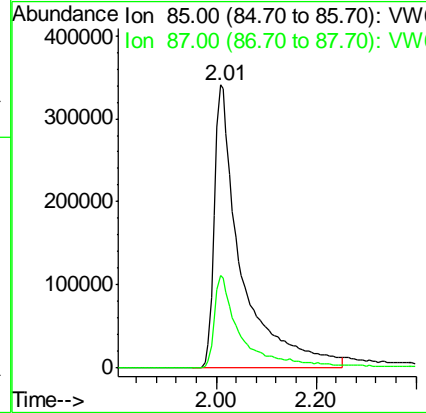
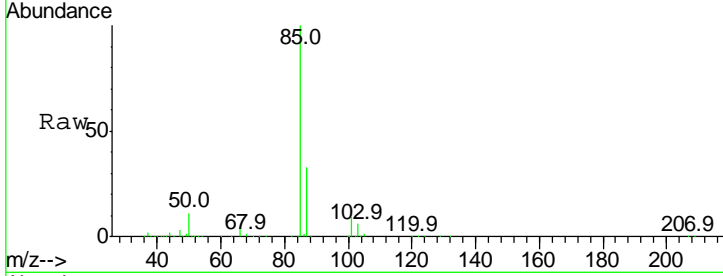




#2
 Dichlorodifluoromethane
 Concen: 129.859 ug/L
 RT: 2.01 min Scan# 69
 Delta R.T. 0.00 min
 Lab File: VW004663.D
 Acq: 14 Aug 2018 11:29

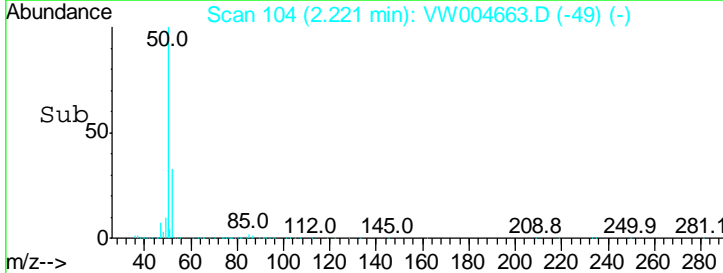
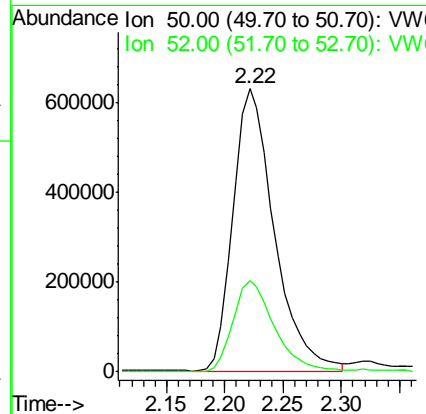
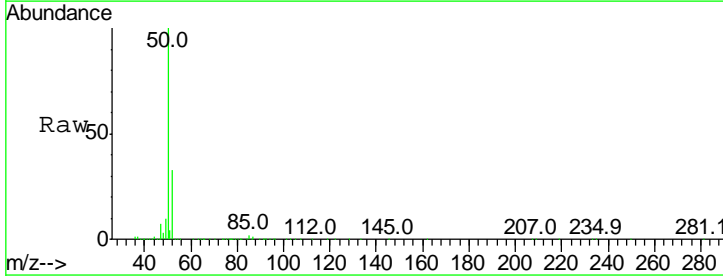
Instrument :
 MSVOA_W
 ClientSampled :
 VSTD10094

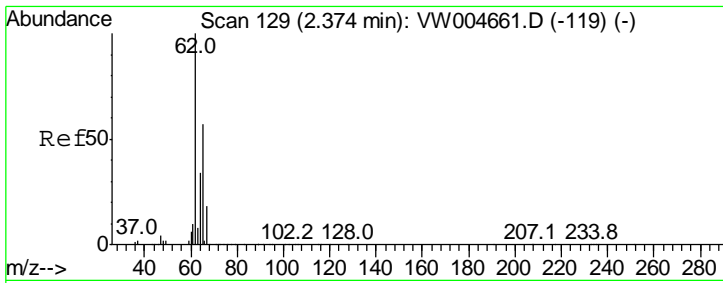
Tgt Ion: 85 Resp: 1289351
 Ion Ratio Lower Upper
 85 100
 87 29.0 19.9 37.0



#3
 Chloromethane
 Concen: 118.286 ug/L
 RT: 2.22 min Scan# 104
 Delta R.T. 0.01 min
 Lab File: VW004663.D
 Acq: 14 Aug 2018 11:29

Tgt Ion: 50 Resp: 1551256
 Ion Ratio Lower Upper
 50 100
 52 32.5 22.4 41.6

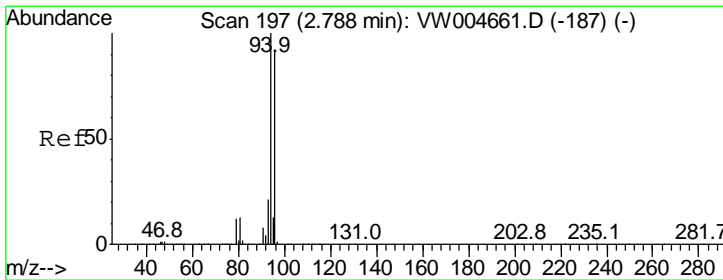
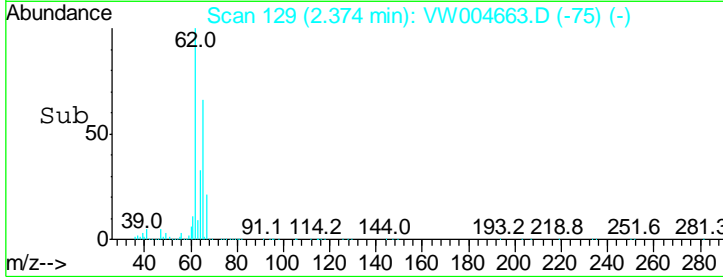
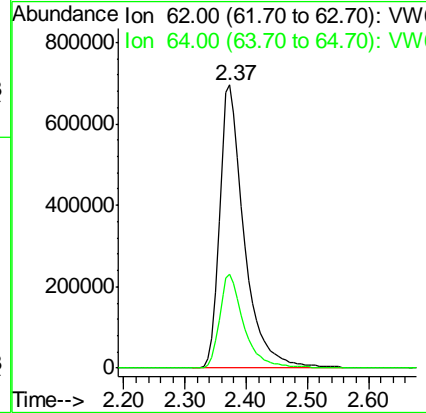
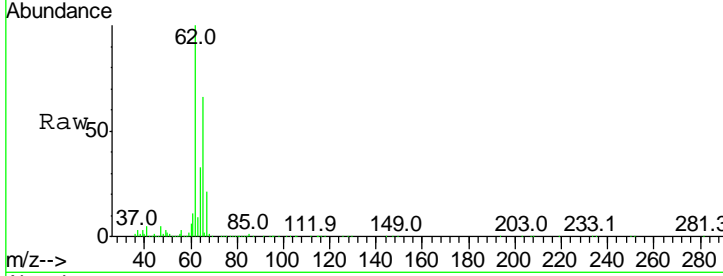




#5
 Vinyl chloride
 Concen: 114.587 ug/L
 RT: 2.37 min Scan# 129
 Delta R.T. 0.00 min
 Lab File: VW004663.D
 Acq: 14 Aug 2018 11:29

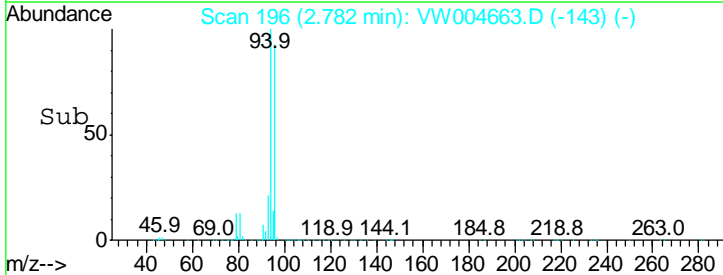
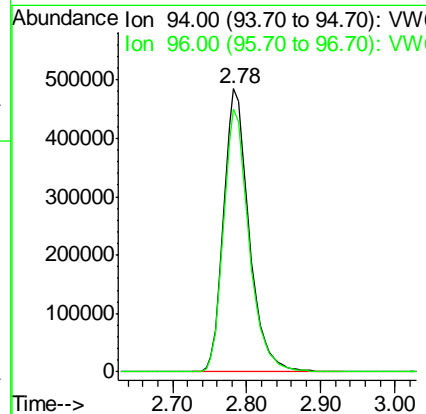
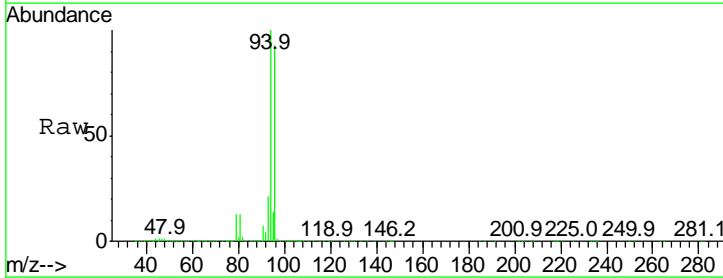
Instrument :
 MSVOA_W
 ClientSampled :
 VSTD10094

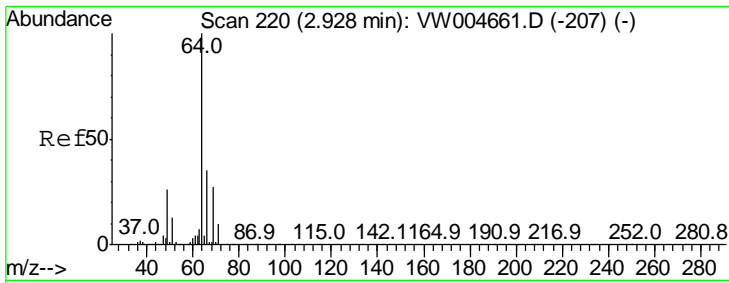
Tgt Ion: 62 Resp: 1960969
 Ion Ratio Lower Upper
 62 100
 64 33.0 23.7 43.9



#6
 Bromomethane
 Concen: 116.299 ug/L
 RT: 2.78 min Scan# 196
 Delta R.T. -0.01 min
 Lab File: VW004663.D
 Acq: 14 Aug 2018 11:29

Tgt Ion: 94 Resp: 1151066
 Ion Ratio Lower Upper
 94 100
 96 92.9 9.3 177.7

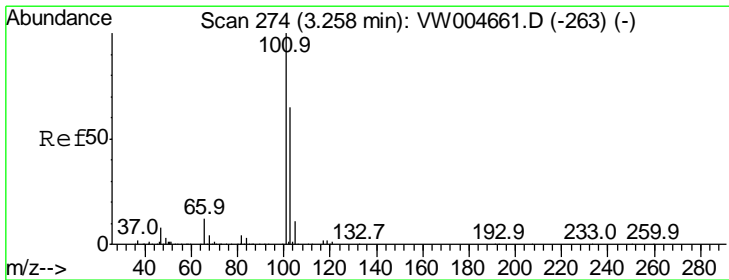
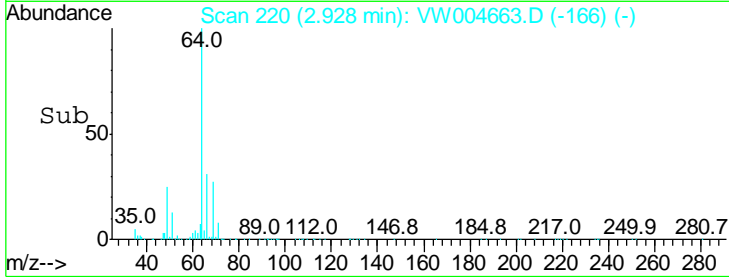
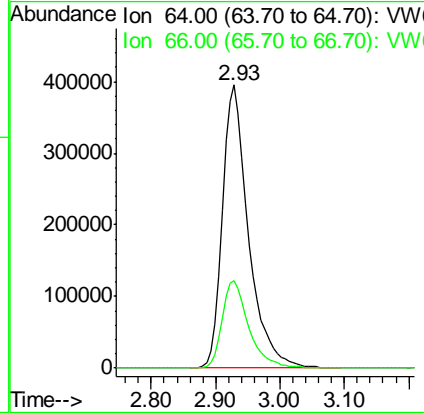
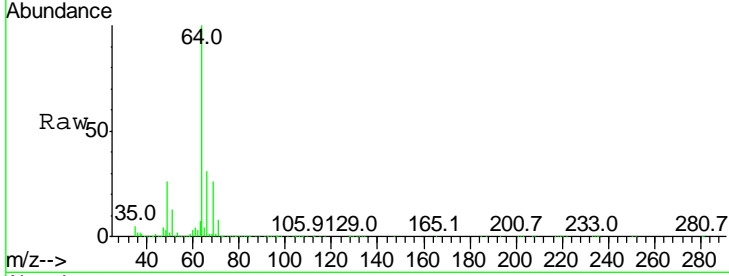




#8
 Chloroethane
 Concen: 109.460 ug/L
 RT: 2.93 min Scan# 220
 Delta R.T. 0.00 min
 Lab File: VW004663.D
 Acq: 14 Aug 2018 11:29

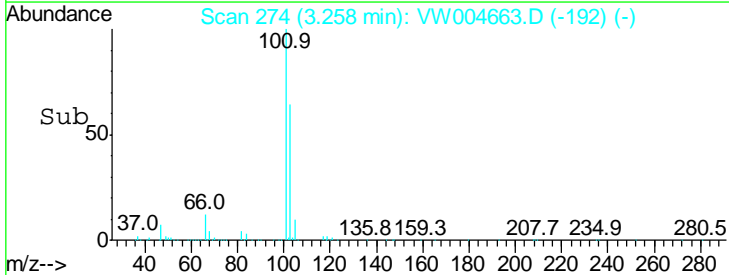
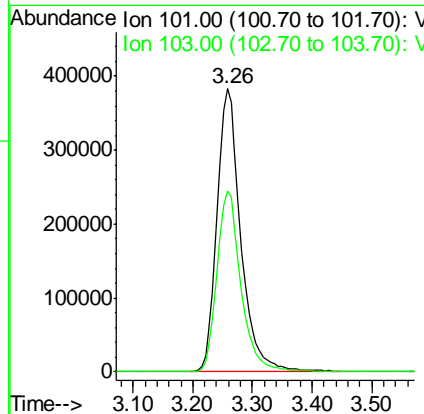
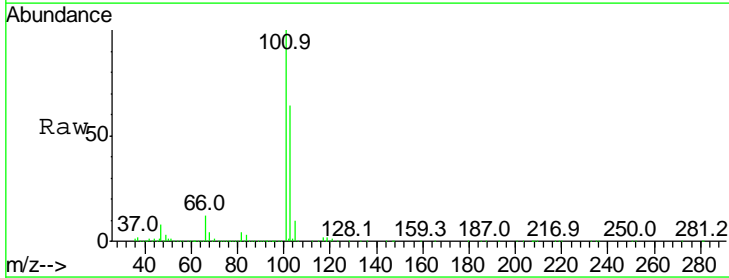
Instrument :
 MSVOA_W
 ClientSampled :
 VSTD10094

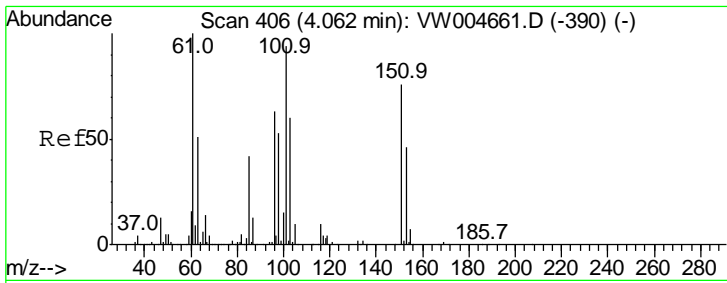
Tgt Ion: 64 Resp: 1123796
 Ion Ratio Lower Upper
 64 100
 66 30.9 24.2 45.0



#9
 Trichlorofluoromethane
 Concen: 135.371 ug/L
 RT: 3.26 min Scan# 274
 Delta R.T. 0.00 min
 Lab File: VW004663.D
 Acq: 14 Aug 2018 11:29

Tgt Ion: 101 Resp: 1056695
 Ion Ratio Lower Upper
 101 100
 103 64.2 45.1 83.7



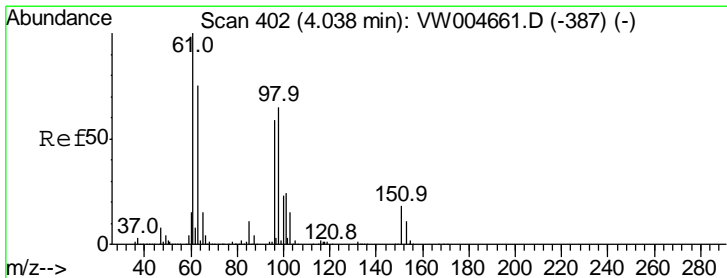
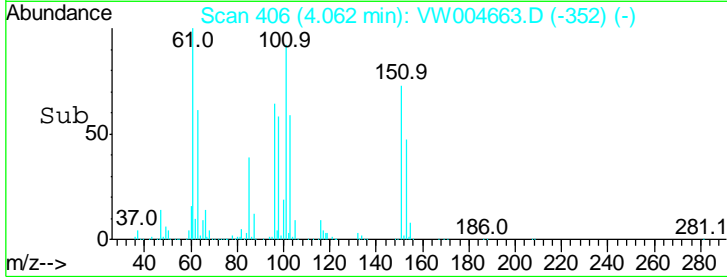
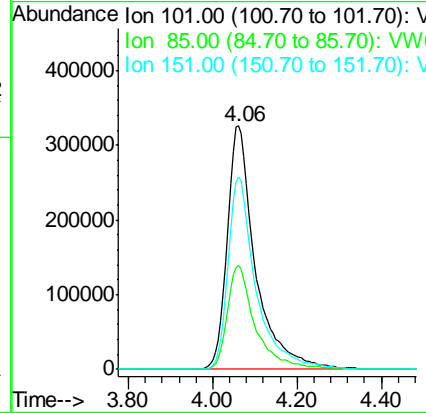
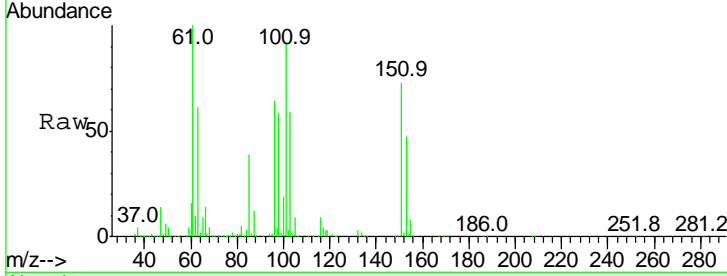


#11
 1,1,2-Trichloro-1,2,2-trifluoroethane
 Concen: 110.748 ug/L
 RT: 4.06 min Scan# 406
 Delta R.T. 0.00 min
 Lab File: VW004663.D
 Acq: 14 Aug 2018 11:29

Instrument :
 MSVOA_W
ClientSampled :
 VSTD10094

Tgt Ion: 101 Resp: 1501021

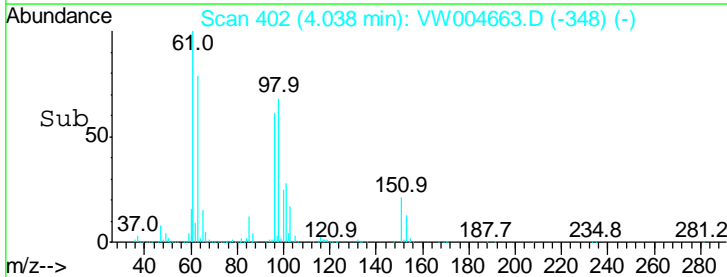
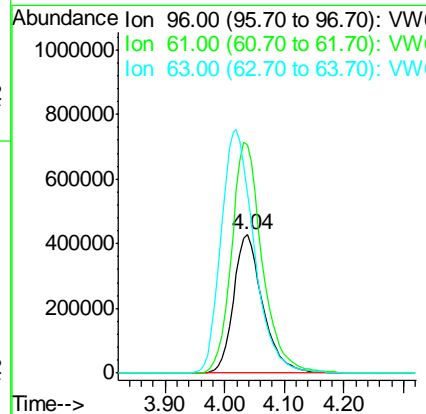
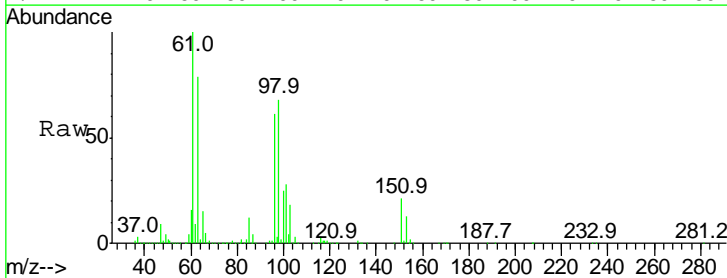
Ion	Ratio	Lower	Upper
101	100		
85	42.1	33.2	49.8
151	77.6	63.0	94.6

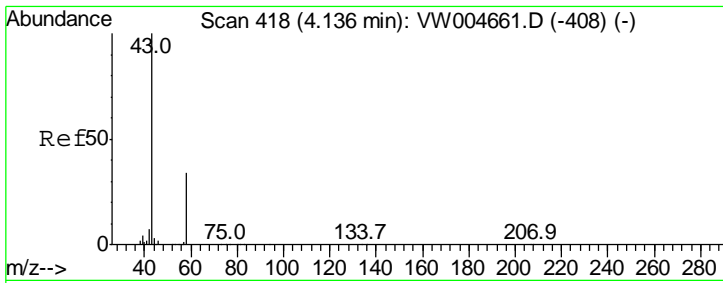


#12
 1,1-Dichloroethene
 Concen: 110.246 ug/L
 RT: 4.04 min Scan# 402
 Delta R.T. 0.00 min
 Lab File: VW004663.D
 Acq: 14 Aug 2018 11:29

Tgt Ion: 96 Resp: 1459800

Ion	Ratio	Lower	Upper
96	100		
61	165.0	118.9	220.7
63	129.9	88.9	165.1

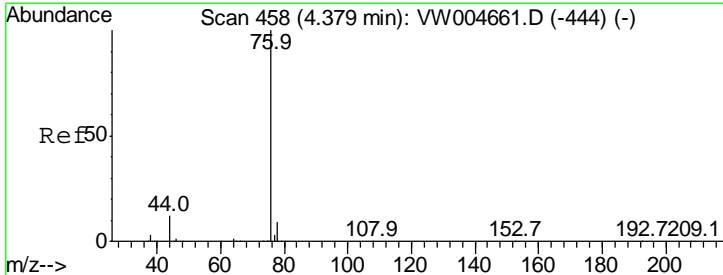
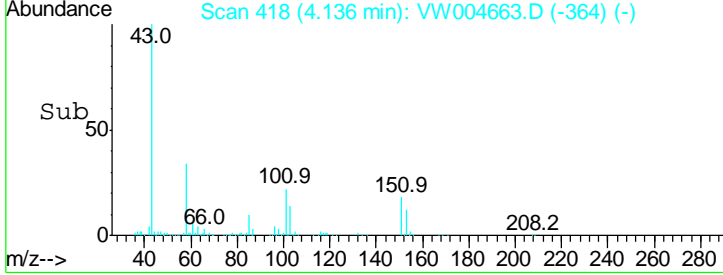
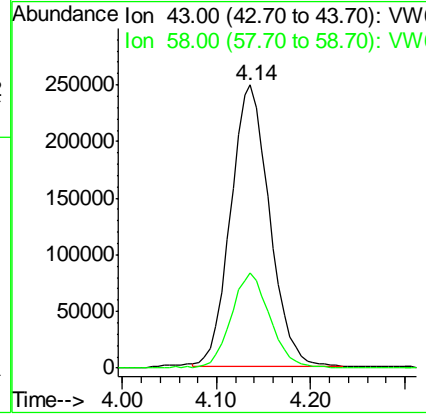
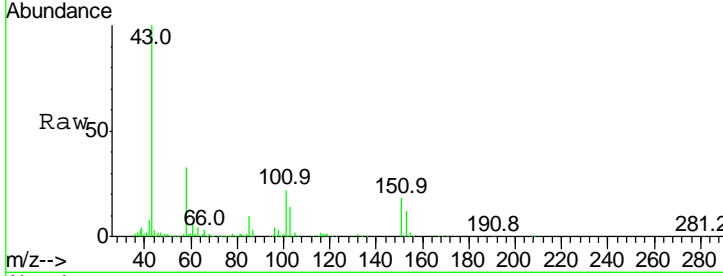




#13
 Acetone
 Concen: 156.575 ug/L
 RT: 4.14 min Scan# 418
 Delta R.T. 0.00 min
 Lab File: VW004663.D
 Acq: 14 Aug 2018 11:29

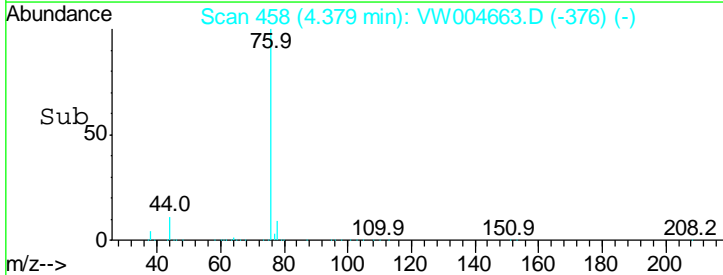
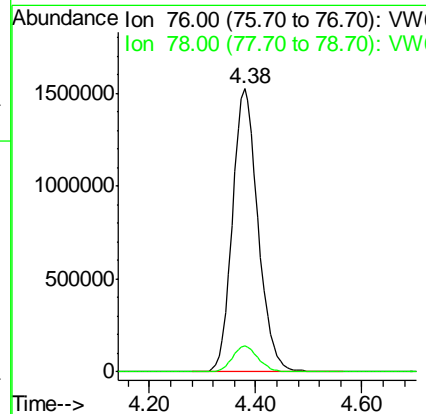
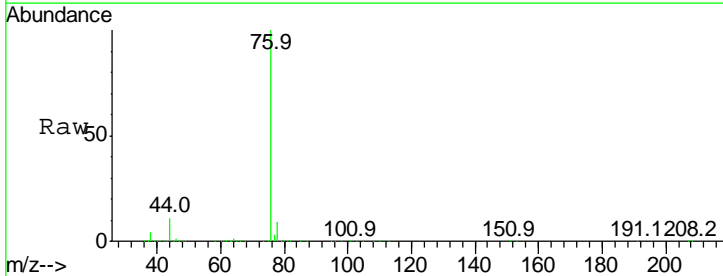
Instrument :
 MSVOA_W
ClientSampled :
 VSTD10094

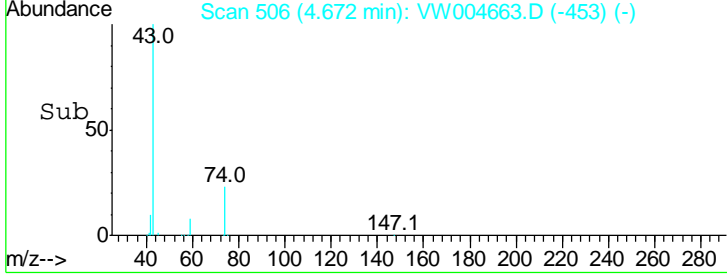
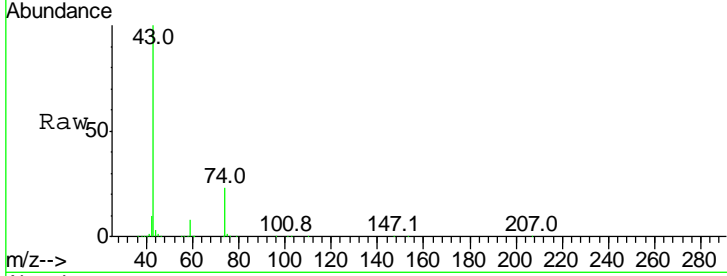
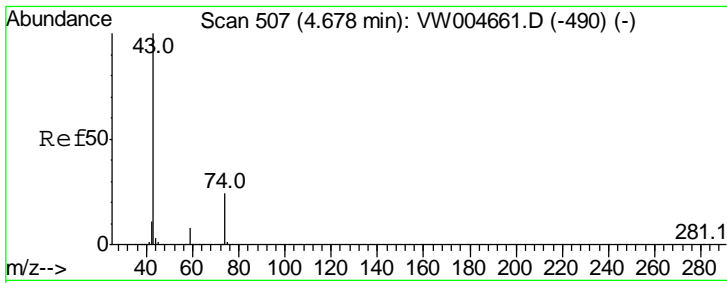
Tgt Ion: 43 Resp: 710451
 Ion Ratio Lower Upper
 43 100
 58 33.8 0.0 69.4



#14
 Carbon disulfide
 Concen: 125.789 ug/L
 RT: 4.38 min Scan# 458
 Delta R.T. 0.00 min
 Lab File: VW004663.D
 Acq: 14 Aug 2018 11:29

Tgt Ion: 76 Resp: 5109018
 Ion Ratio Lower Upper
 76 100
 78 9.1 7.4 11.2



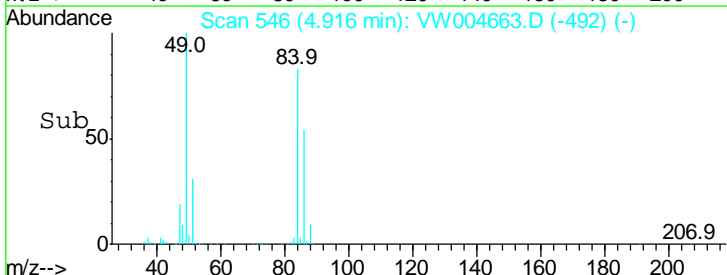
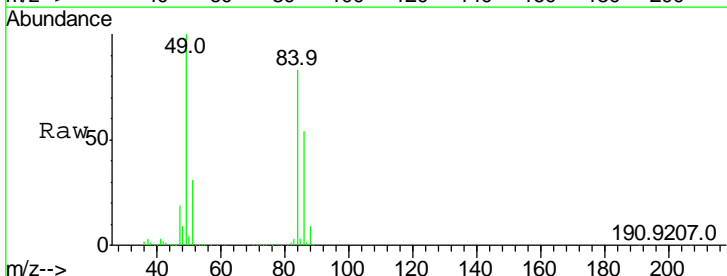
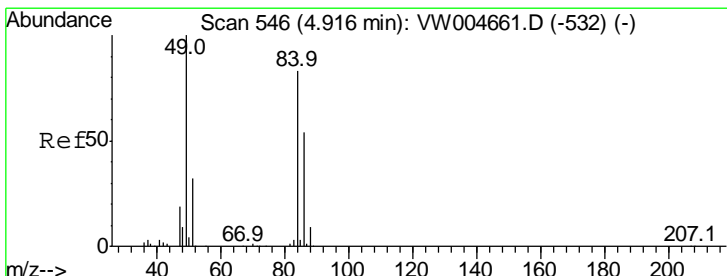
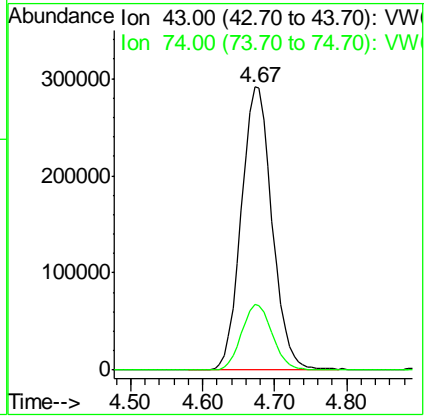


#15
 Methyl Acetate
 Concen: 93.445 ug/L
 RT: 4.67 min Scan# 506
 Delta R.T. -0.01 min
 Lab File: VW004663.D
 Acq: 14 Aug 2018 11:29

Instrument :
 MSVOA_W
ClientSampled :
 VSTD10094

Tgt Ion: 43 Resp: 864198

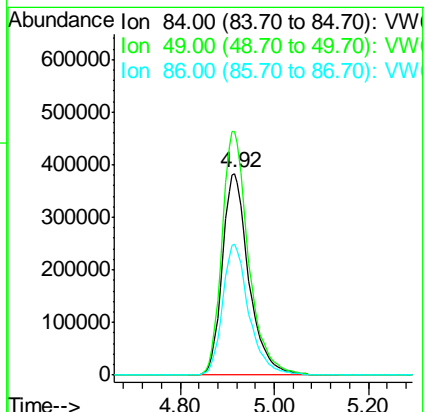
Ion	Ratio	Lower	Upper
43	100		
74	23.2	18.8	28.2

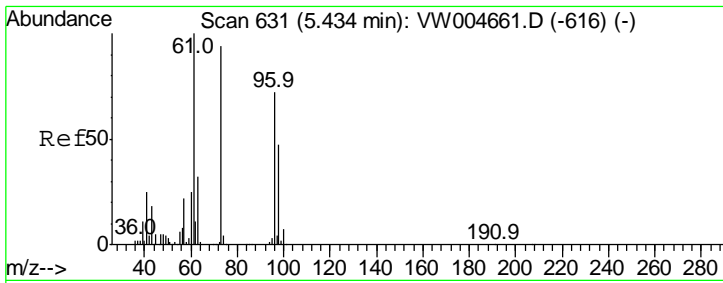


#16
 Methylene chloride
 Concen: 78.690 ug/L
 RT: 4.92 min Scan# 546
 Delta R.T. 0.00 min
 Lab File: VW004663.D
 Acq: 14 Aug 2018 11:29

Tgt Ion: 84 Resp: 1492581

Ion	Ratio	Lower	Upper
84	100		
49	120.6	84.9	157.7
86	64.7	45.7	84.9

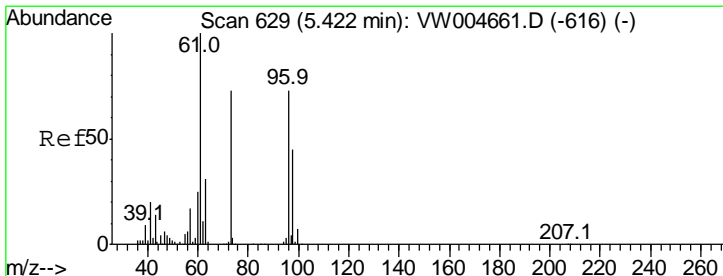
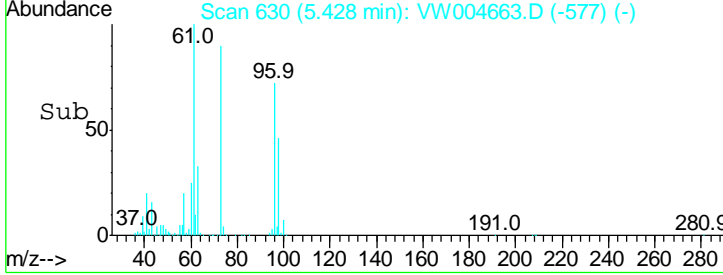
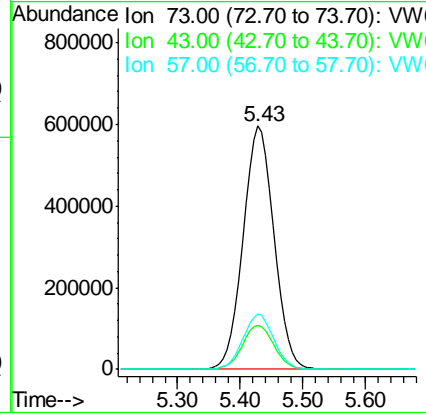
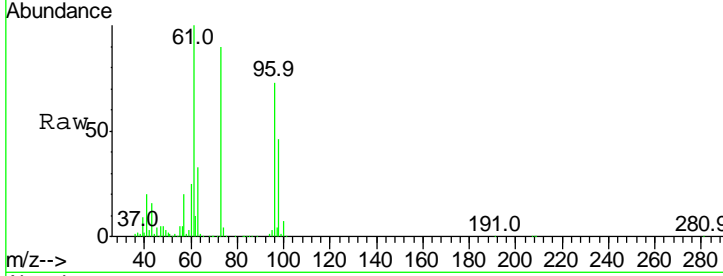




#17
 Methyl tert-butyl Ether
 Concen: 113.033 ug/L
 RT: 5.43 min Scan# 630
 Delta R.T. -0.01 min
 Lab File: VW004663.D
 Acq: 14 Aug 2018 11:29

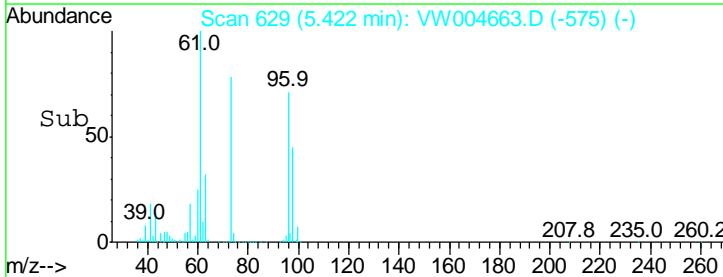
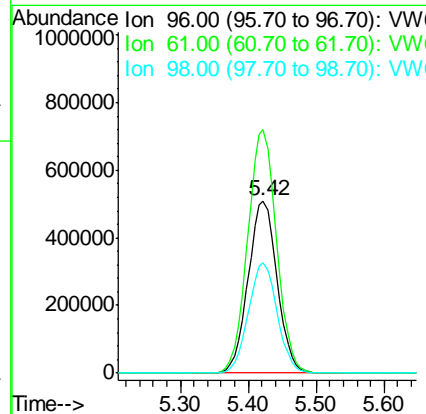
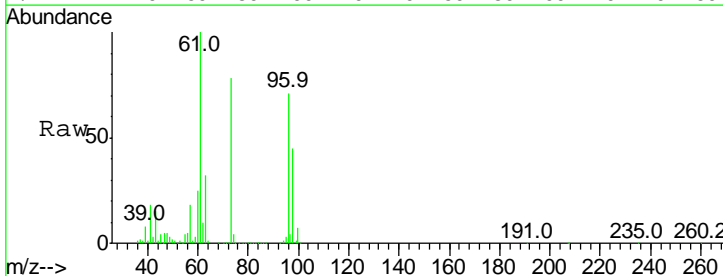
Instrument :
 MSVOA_W
 ClientSampled :
 VSTD10094

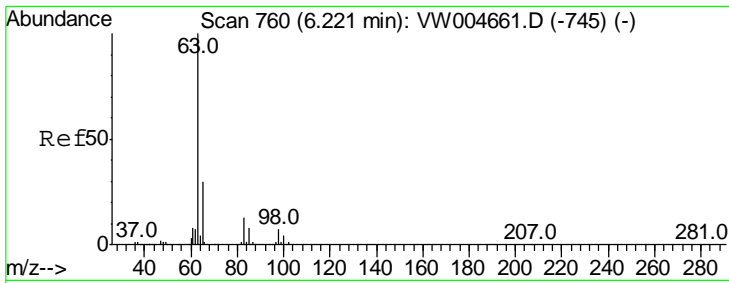
Tgt Ion	Resp	Lower	Upper
73	2025957		
73	100		
43	18.4	15.0	22.6
57	22.8	18.6	27.8



#18
 trans-1,2-Dichloroethene
 Concen: 111.402 ug/L
 RT: 5.42 min Scan# 629
 Delta R.T. 0.00 min
 Lab File: VW004663.D
 Acq: 14 Aug 2018 11:29

Tgt Ion	Resp	Lower	Upper
96	1508538		
96	100		
61	141.4	96.1	178.5
98	64.0	43.3	80.5

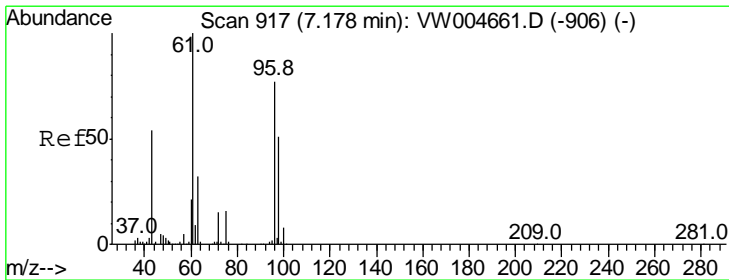
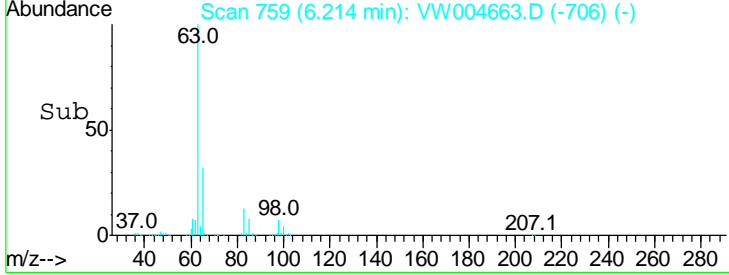
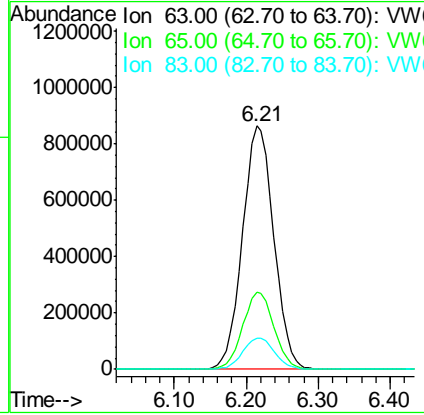
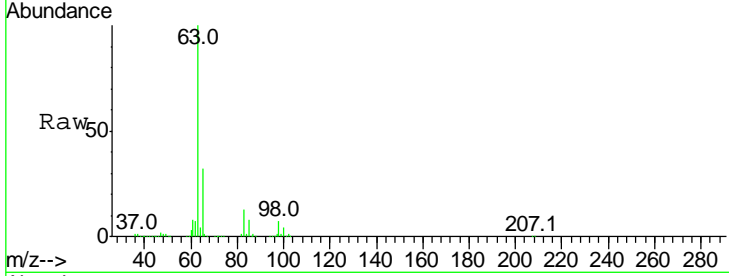




#19
 1,1-Dichloroethane
 Concen: 101.197 ug/L
 RT: 6.21 min Scan# 759
 Delta R.T. -0.01 min
 Lab File: VW004663.D
 Acq: 14 Aug 2018 11:29

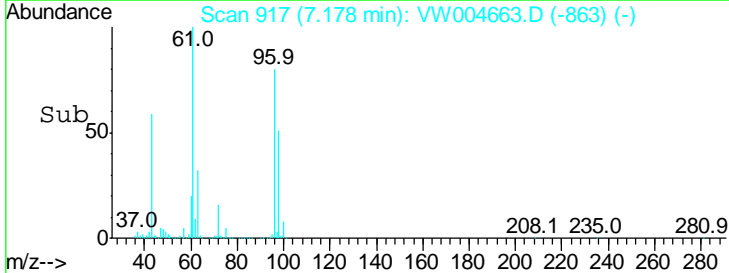
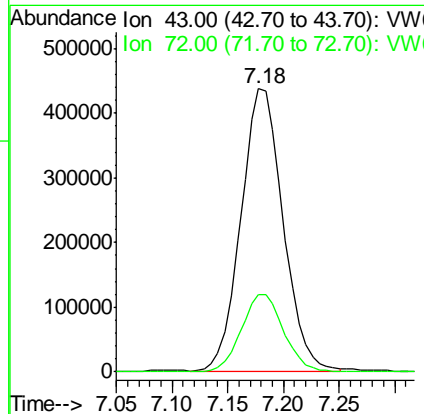
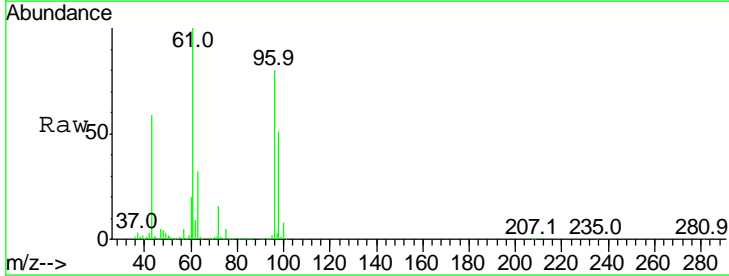
Instrument :
 MSVOA_W
 ClientSampled :
 VSTD10094

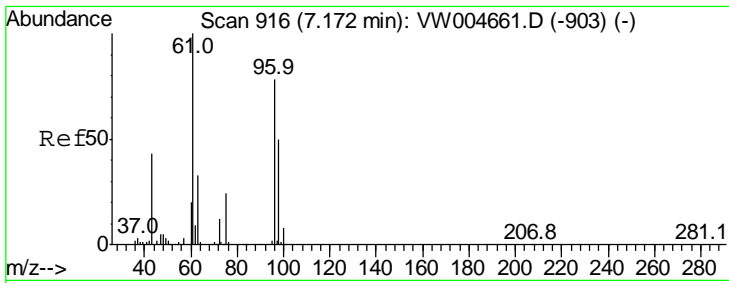
Tgt Ion	Resp	Lower	Upper
63	100		
65	31.6	21.2	39.4
83	12.9	9.2	17.0



#21
 2-Butanone
 Concen: 184.357 ug/L
 RT: 7.18 min Scan# 917
 Delta R.T. 0.00 min
 Lab File: VW004663.D
 Acq: 14 Aug 2018 11:29

Tgt Ion	Resp	Lower	Upper
43	100		
72	27.8	14.1	42.2

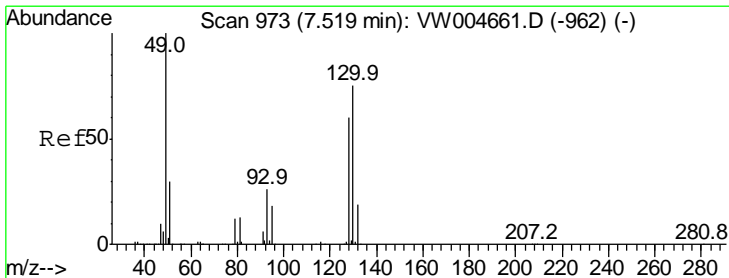
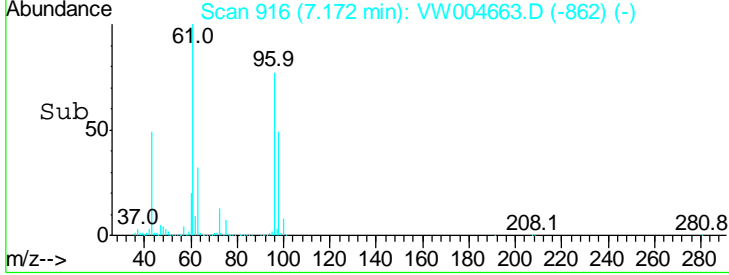
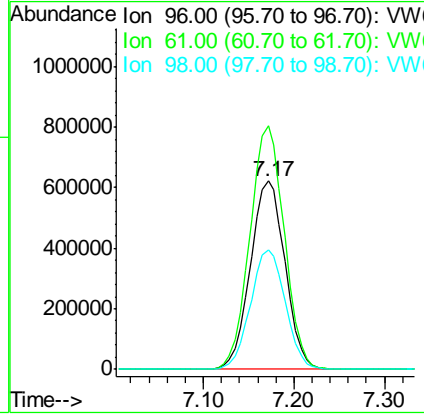
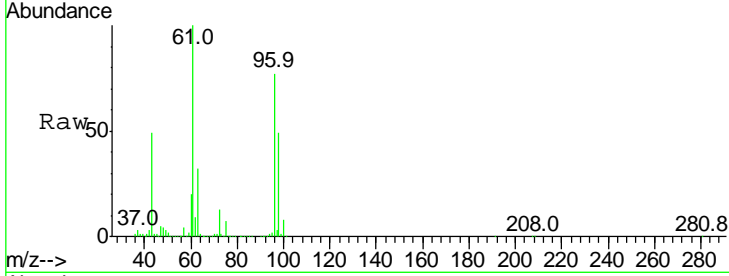




#22
 cis-1,2-Dichloroethene
 Concen: 111.193 ug/L
 RT: 7.17 min Scan# 916
 Delta R.T. 0.00 min
 Lab File: VW004663.D
 Acq: 14 Aug 2018 11:29

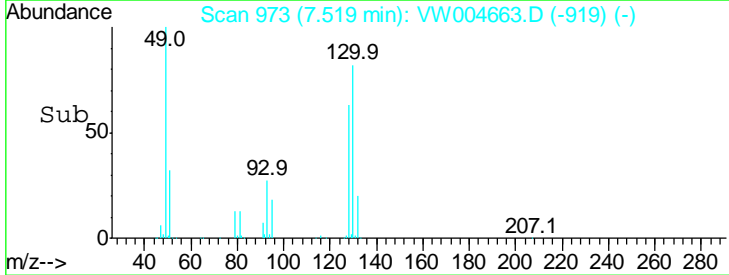
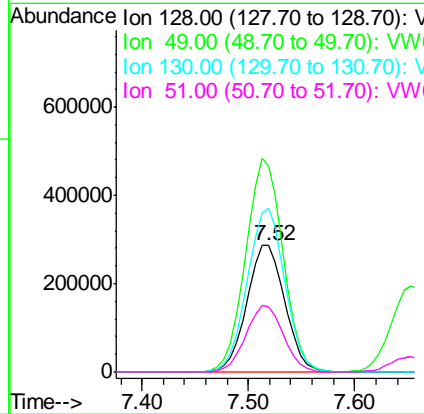
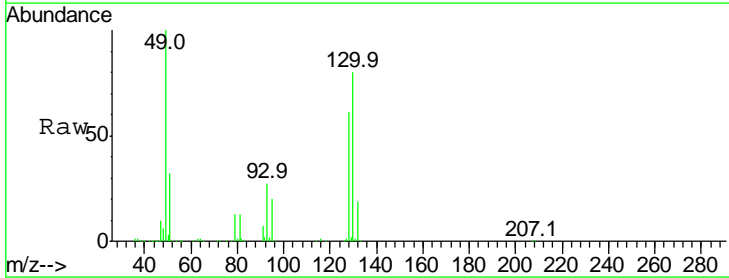
Instrument :
 MSVOA_W
 ClientSampled :
 VSTD10094

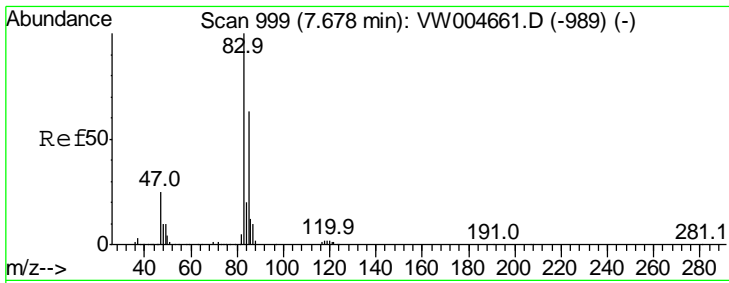
Tgt Ion	Resp	Lower	Upper
96	1643425		
96	100		
61	129.5	89.6	166.4
98	63.7	44.5	82.7



#23
 Bromochloromethane
 Concen: 101.660 ug/L
 RT: 7.52 min Scan# 973
 Delta R.T. 0.00 min
 Lab File: VW004663.D
 Acq: 14 Aug 2018 11:29

Tgt Ion	Resp	Lower	Upper
128	719152		
128	100		
49	163.2	116.0	215.4
130	130.3	86.6	160.8
51	52.0	39.8	59.8

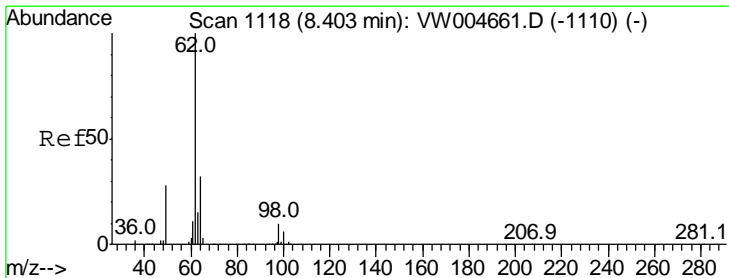
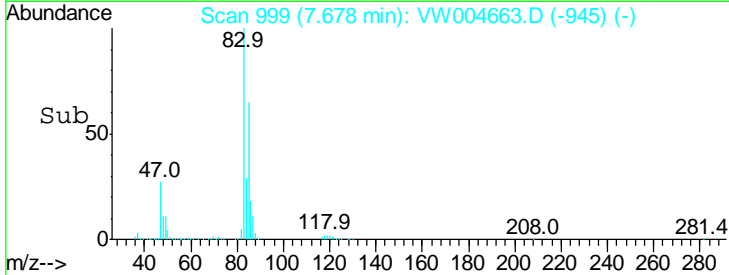
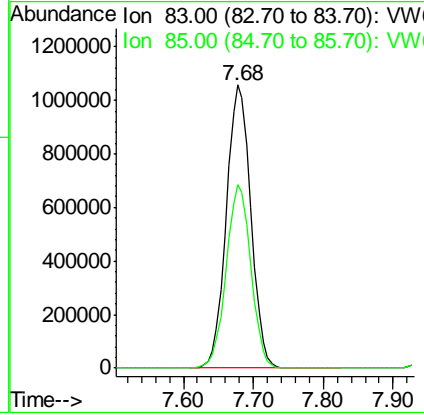
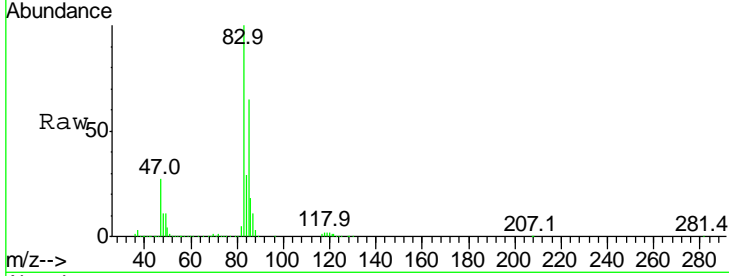




#25
 Chloroform
 Concen: 97.601 ug/L
 RT: 7.68 min Scan# 999
 Delta R.T. 0.00 min
 Lab File: VW004663.D
 Acq: 14 Aug 2018 11:29

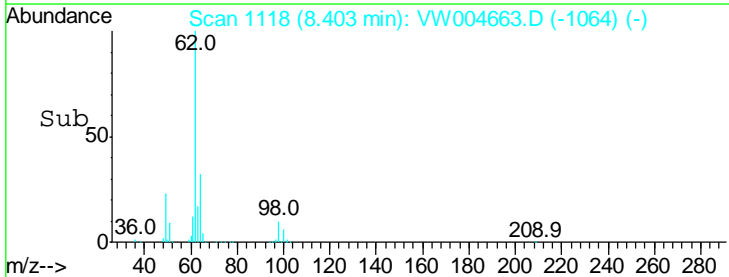
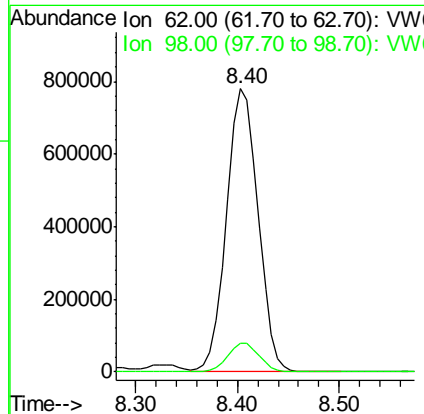
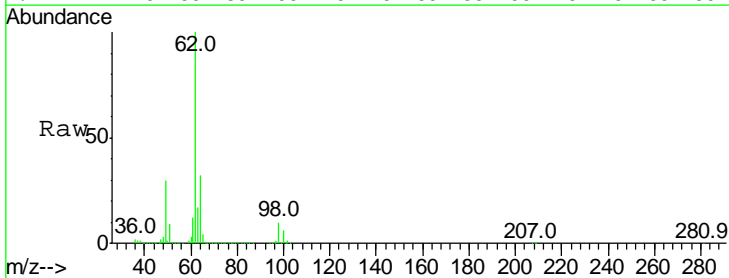
Instrument :
 MSVOA_W
 ClientSampled :
 VSTD10094

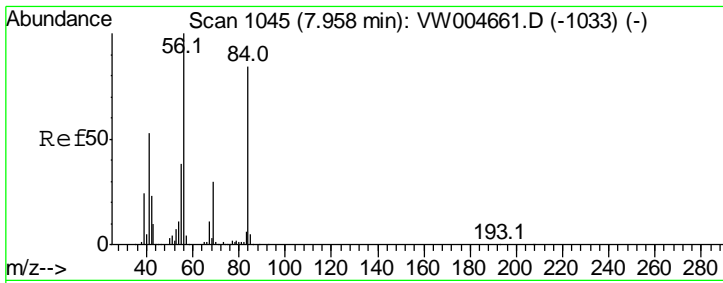
Tgt Ion: 83 Resp: 2559949
 Ion Ratio Lower Upper
 83 100
 85 65.4 45.5 84.5



#27
 1,2-Dichloroethane
 Concen: 94.819 ug/L
 RT: 8.40 min Scan# 1118
 Delta R.T. 0.00 min
 Lab File: VW004663.D
 Acq: 14 Aug 2018 11:29

Tgt Ion: 62 Resp: 1670747
 Ion Ratio Lower Upper
 62 100
 98 10.1 7.8 11.8



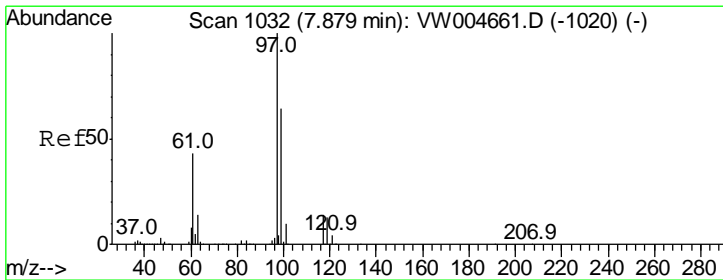
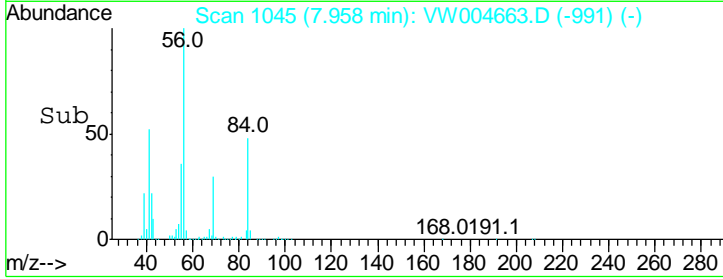
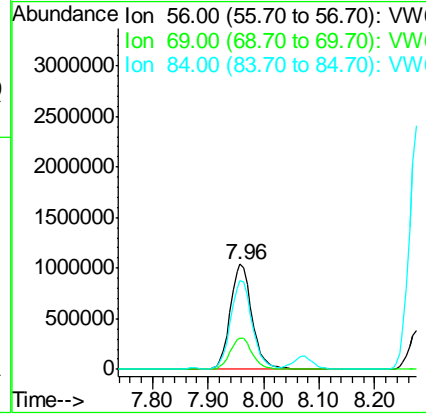
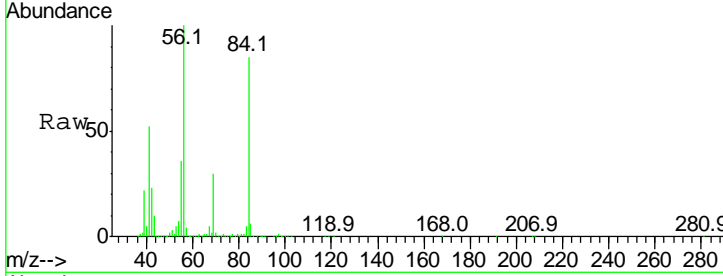


#30
 Cyclohexane
 Concen: 133.506 ug/L
 RT: 7.96 min Scan# 1045
 Delta R.T. 0.00 min
 Lab File: VW004663.D
 Acq: 14 Aug 2018 11:29

Instrument :
 MSVOA_W
 ClientSampled :
 VSTD10094

Tgt Ion: 56 Resp: 2816427

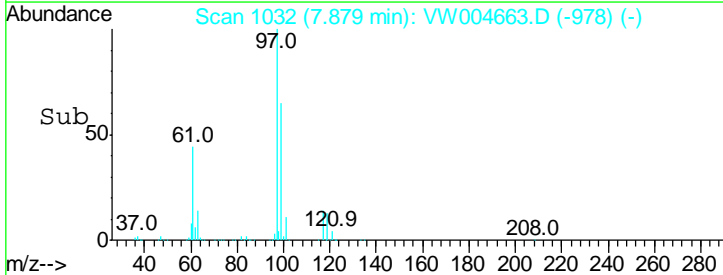
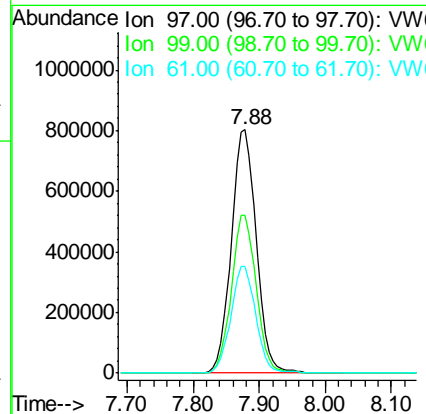
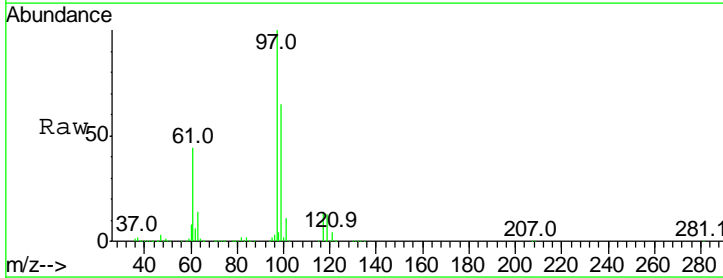
Ion	Ratio	Lower	Upper
56	100		
69	30.2	23.9	35.9
84	83.4	66.4	99.6

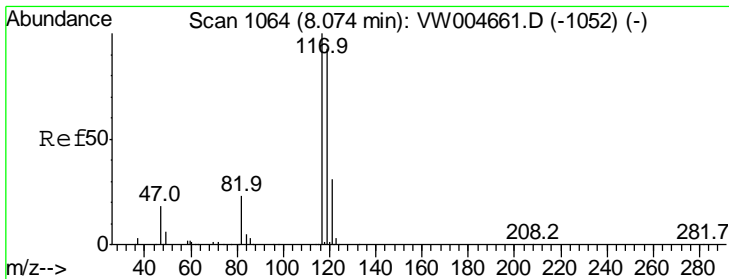


#31
 1,1,1-Trichloroethane
 Concen: 110.884 ug/L
 RT: 7.88 min Scan# 1032
 Delta R.T. 0.00 min
 Lab File: VW004663.D
 Acq: 14 Aug 2018 11:29

Tgt Ion: 97 Resp: 2101491

Ion	Ratio	Lower	Upper
97	100		
99	64.3	51.3	76.9
61	43.8	35.6	53.4

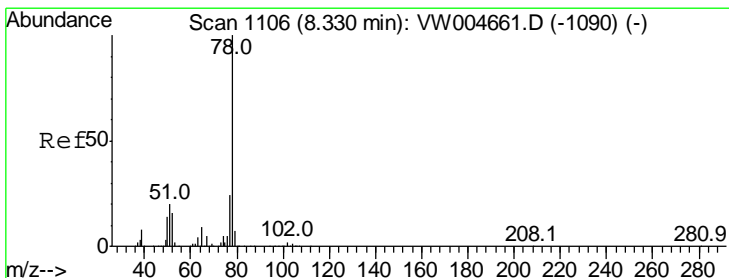
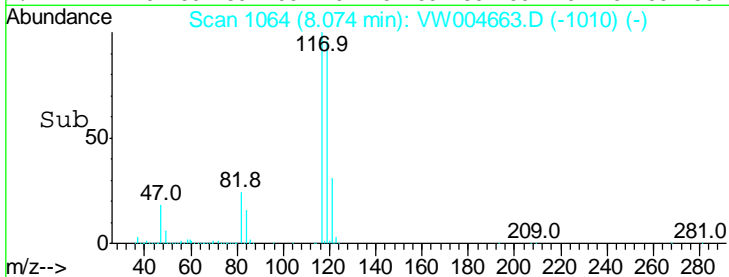
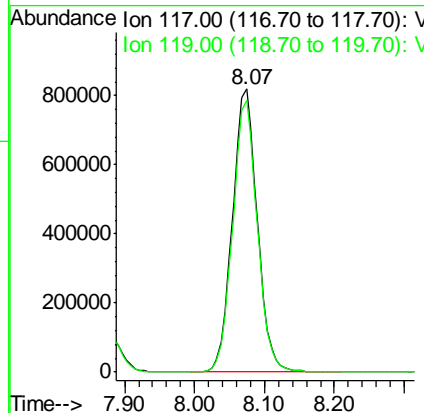
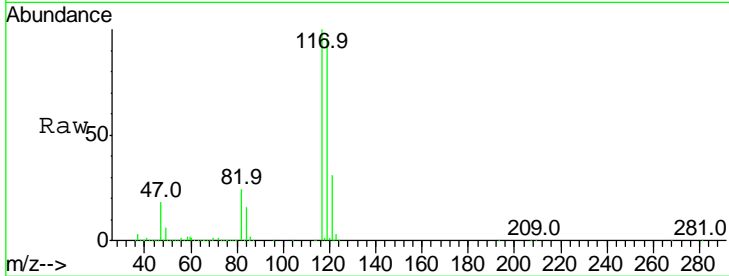




#32
 Carbon tetrachloride
 Concen: 110.700 ug/L
 RT: 8.07 min Scan# 1064
 Delta R.T. 0.00 min
 Lab File: VW004663.D
 Acq: 14 Aug 2018 11:29

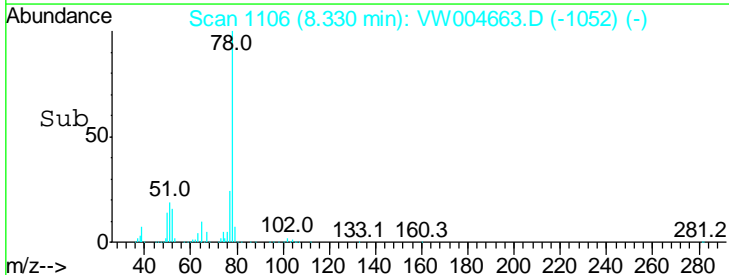
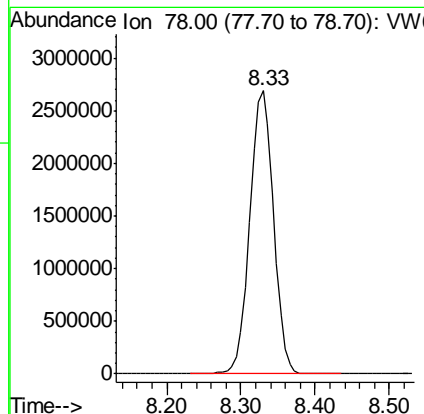
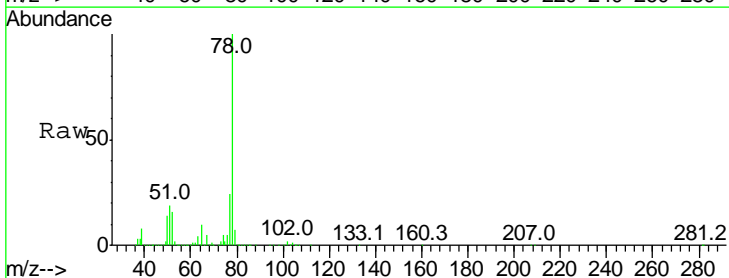
Instrument :
 MSVOA_W
 ClientSampled :
 VSTD10094

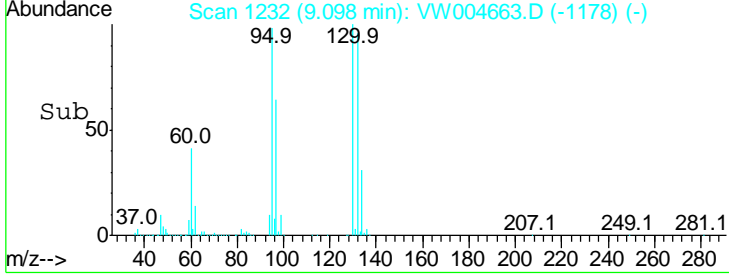
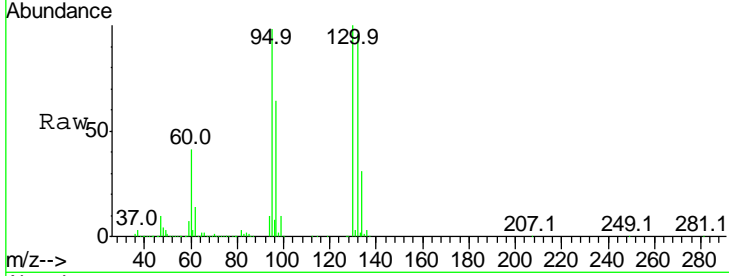
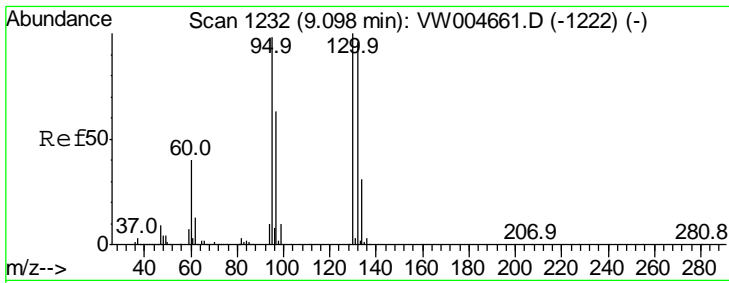
Tgt Ion: 117 Resp: 2021924
 Ion Ratio Lower Upper
 117 100
 119 95.4 76.2 114.4



#34
 Benzene
 Concen: 109.584 ug/L
 RT: 8.33 min Scan# 1106
 Delta R.T. 0.00 min
 Lab File: VW004663.D
 Acq: 14 Aug 2018 11:29

Tgt Ion: 78 Resp: 6026913

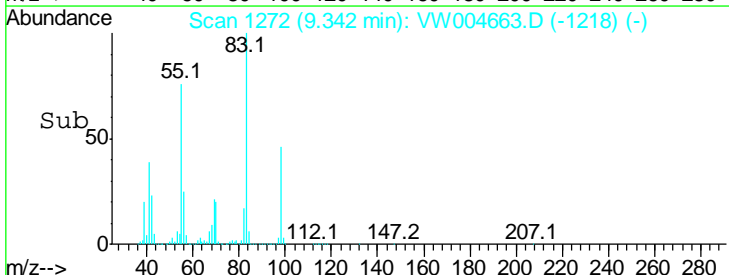
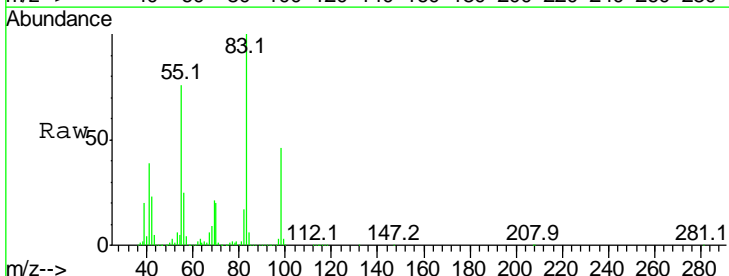
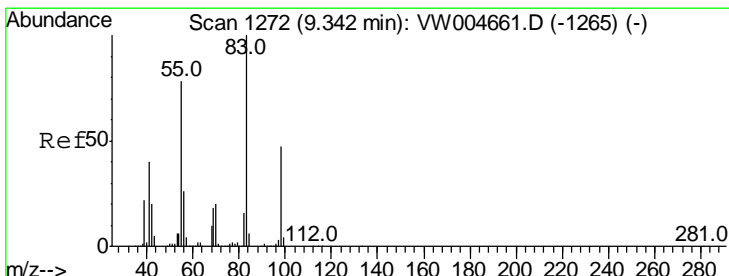
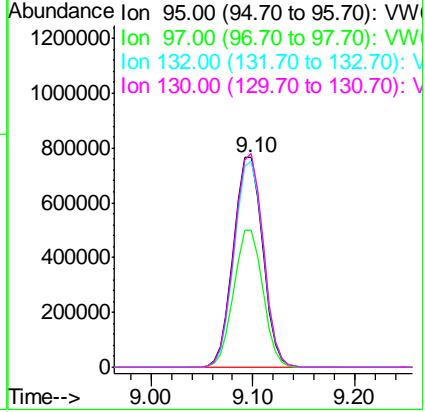




#35
 Trichloroethene
 Concen: 110.247 ug/L
 RT: 9.10 min Scan# 1232
 Delta R.T. 0.00 min
 Lab File: VW004663.D
 Acq: 14 Aug 2018 11:29

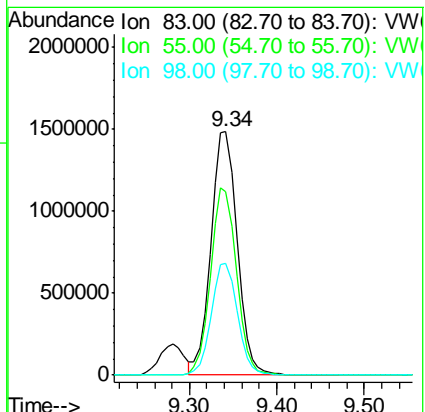
Tgt Ion	Resp	Lower	Upper
95	1525124		
95	100		
97	64.9	45.1	83.9
132	97.8	68.8	127.8
130	101.3	71.5	132.9

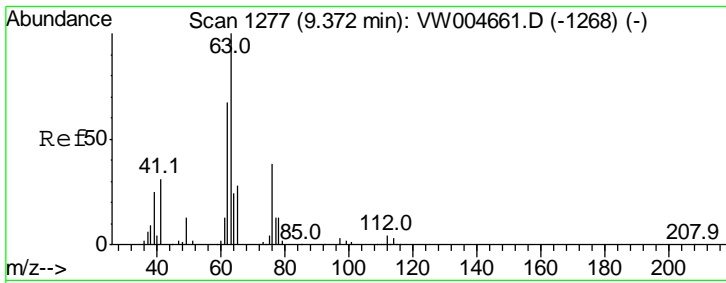
Instrument : MSVOA_W
 ClientSampleID : VSTD10094



#36
 Methylcyclohexane
 Concen: 127.667 ug/L
 RT: 9.34 min Scan# 1272
 Delta R.T. 0.00 min
 Lab File: VW004663.D
 Acq: 14 Aug 2018 11:29

Tgt Ion	Resp	Lower	Upper
83	3100289		
83	100		
55	75.8	61.4	92.2
98	45.8	36.2	54.4

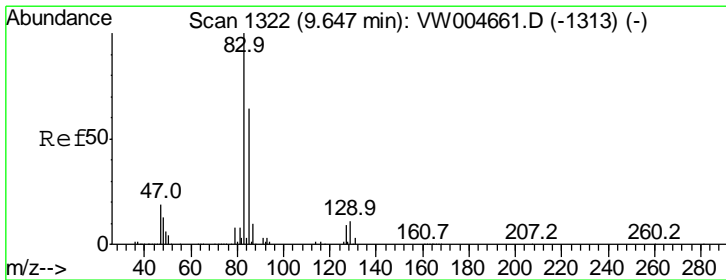
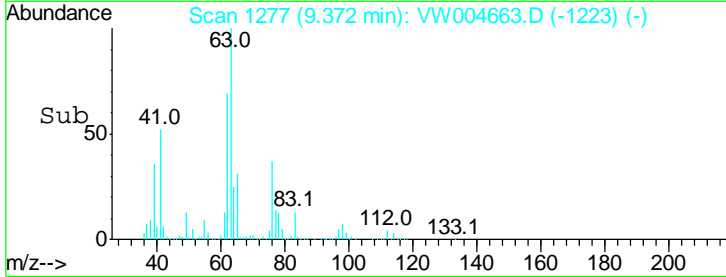
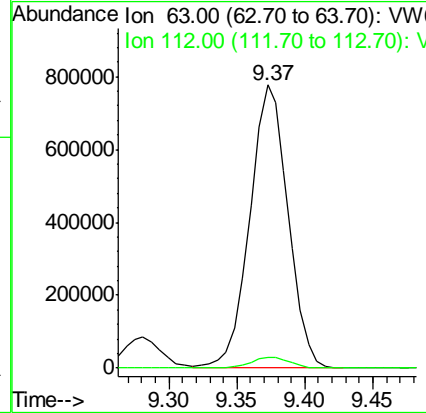
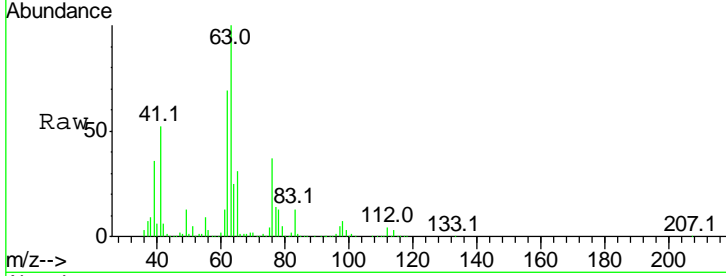




#40
 1,2-Dichloropropane
 Concen: 105.165 ug/L
 RT: 9.37 min Scan# 1277
 Delta R.T. 0.00 min
 Lab File: VW004663.D
 Acq: 14 Aug 2018 11:29

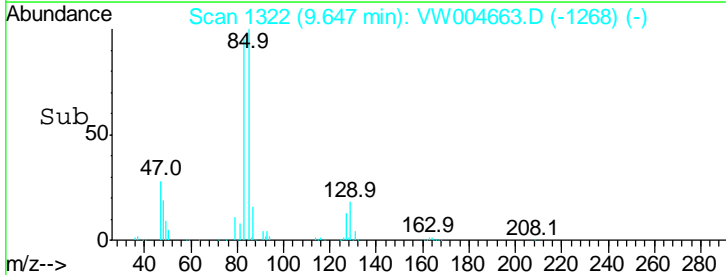
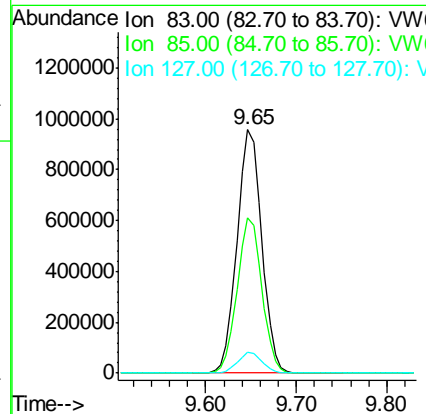
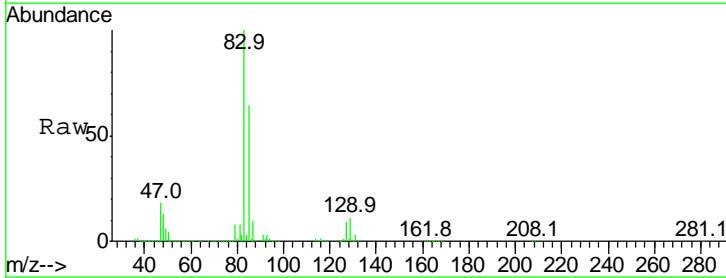
Instrument :
 MSVOA_W
 ClientSampled :
 VSTD10094

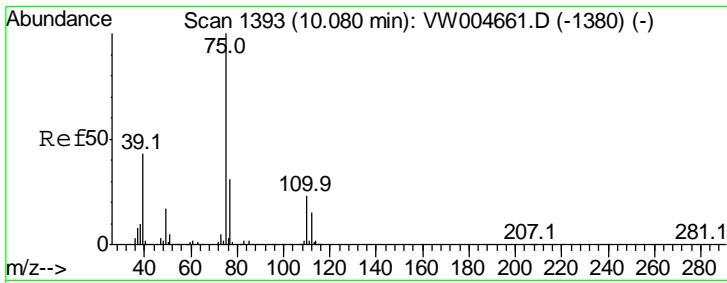
Tgt Ion: 63 Resp: 1531843
 Ion Ratio Lower Upper
 63 100
 112 3.9 3.4 5.0



#41
 Bromodichloromethane
 Concen: 103.710 ug/L
 RT: 9.65 min Scan# 1322
 Delta R.T. 0.00 min
 Lab File: VW004663.D
 Acq: 14 Aug 2018 11:29

Tgt Ion: 83 Resp: 1814609
 Ion Ratio Lower Upper
 83 100
 85 63.9 44.9 83.5
 127 8.5 7.0 10.6

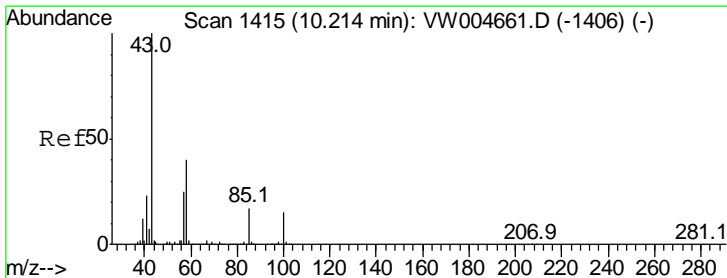
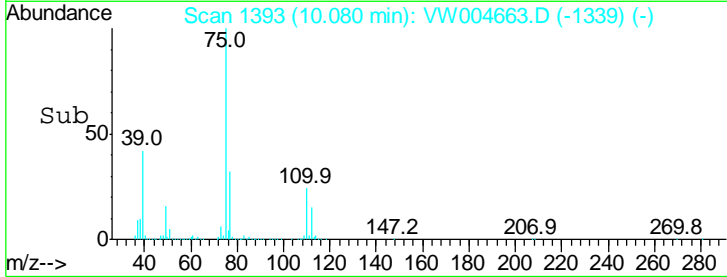
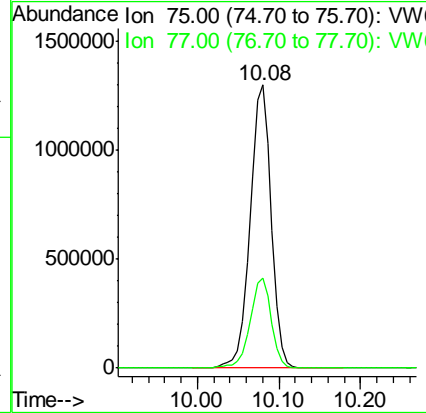
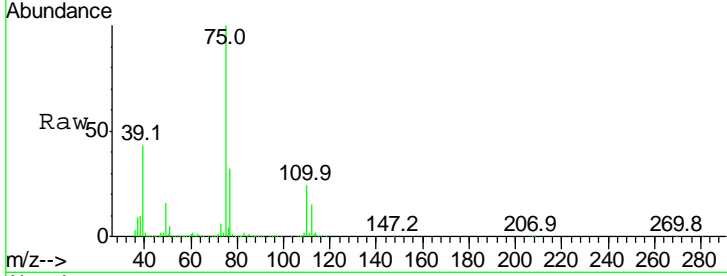




#42
 cis-1,3-Dichloropropene
 Concen: 117.157 ug/L
 RT: 10.08 min Scan# 1393
 Delta R.T. 0.00 min
 Lab File: VW004663.D
 Acq: 14 Aug 2018 11:29

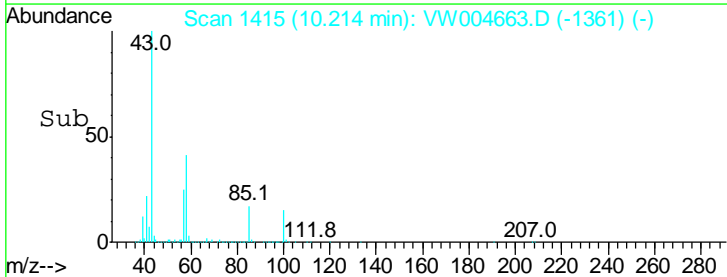
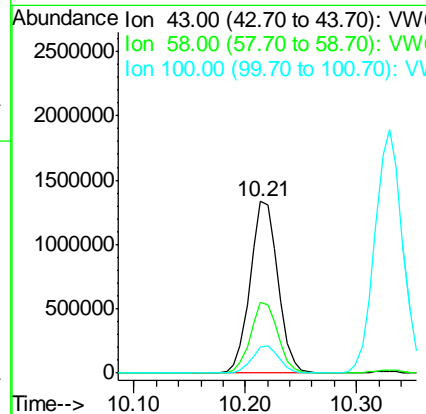
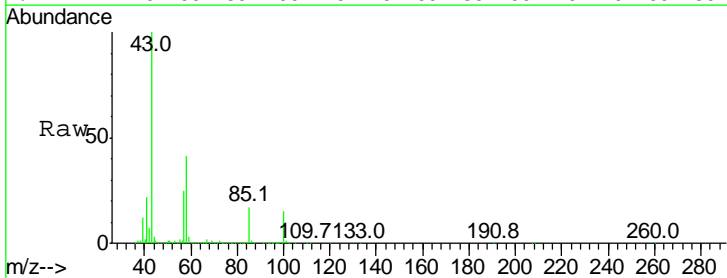
Instrument :
 MSVOA_W
 ClientSampled :
 VSTD10094

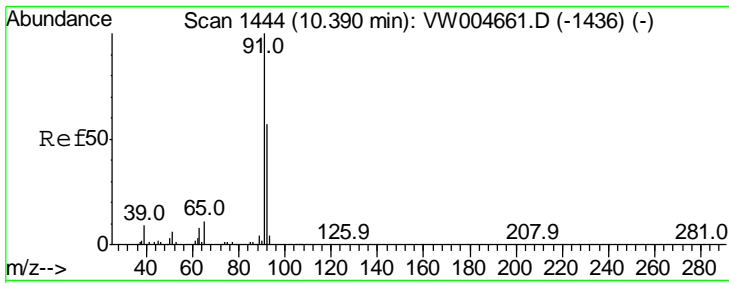
Tgt Ion: 75 Resp: 2334454
 Ion Ratio Lower Upper
 75 100
 77 31.9 21.7 40.3



#43
 4-Methyl-2-pentanone
 Concen: 212.046 ug/L
 RT: 10.21 min Scan# 1415
 Delta R.T. 0.00 min
 Lab File: VW004663.D
 Acq: 14 Aug 2018 11:29

Tgt Ion: 43 Resp: 2315891
 Ion Ratio Lower Upper
 43 100
 58 40.7 31.8 47.8
 100 15.4 12.2 18.4

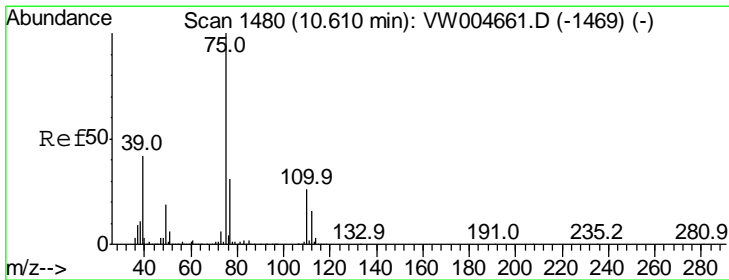
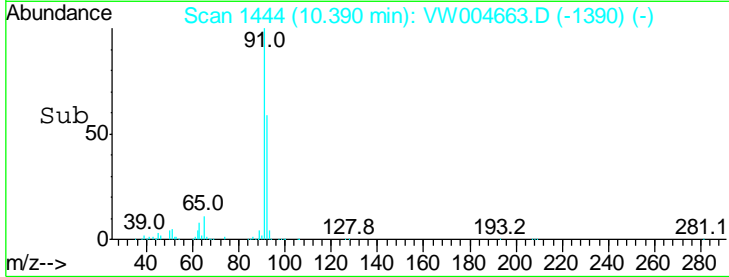
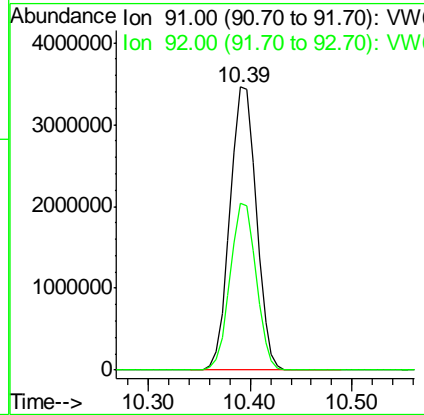
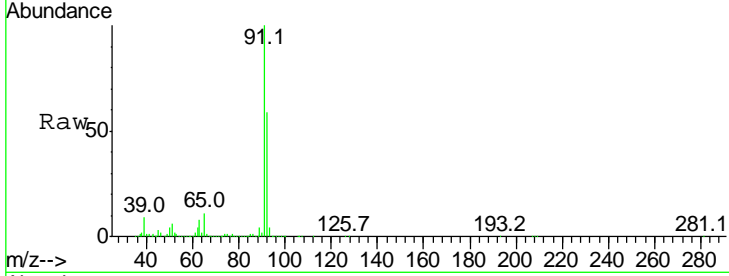




#44
 Toluene
 Concen: 111.462 ug/L
 RT: 10.39 min Scan# 1444
 Delta R.T. 0.00 min
 Lab File: VW004663.D
 Acq: 14 Aug 2018 11:29

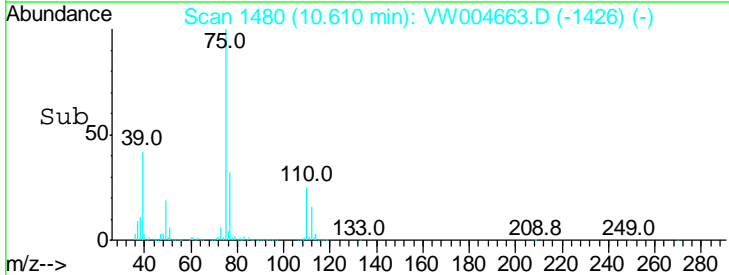
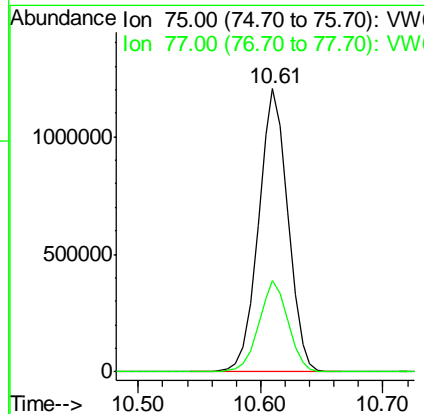
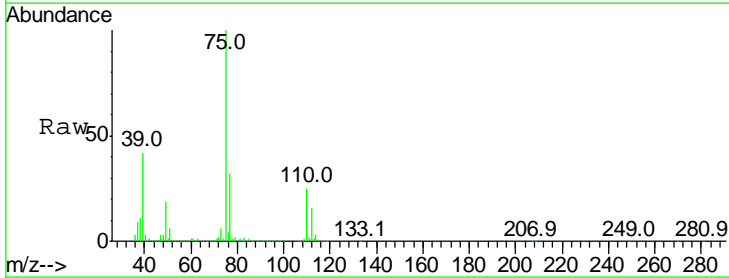
Instrument :
 MSVOA_W
 ClientSampled :
 VSTD10094

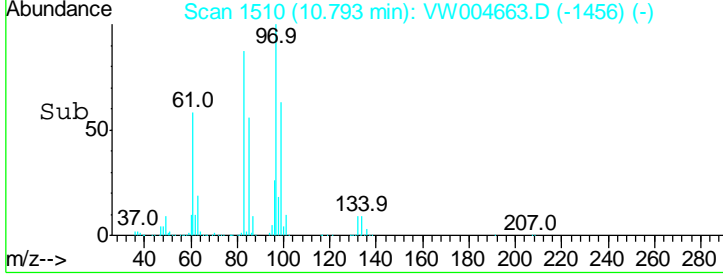
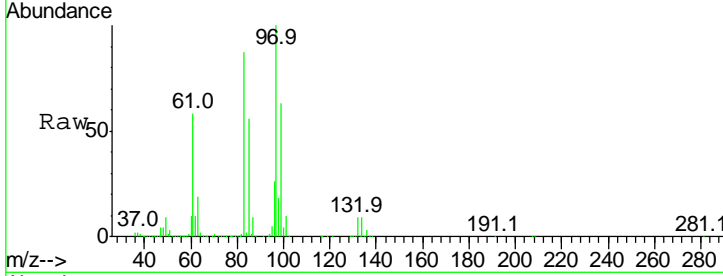
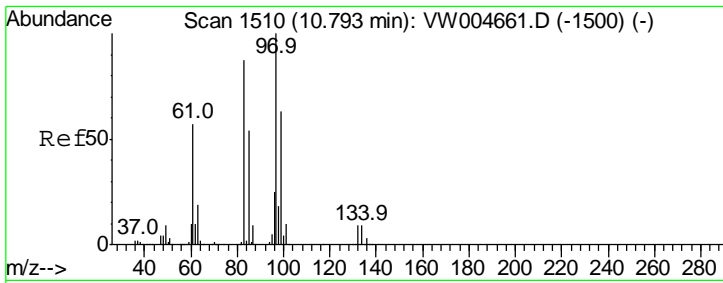
Tgt Ion: 91 Resp: 6168985
 Ion Ratio Lower Upper
 91 100
 92 58.8 40.3 74.8



#45
 trans-1,3-Dichloropropene
 Concen: 112.381 ug/L
 RT: 10.61 min Scan# 1480
 Delta R.T. 0.00 min
 Lab File: VW004663.D
 Acq: 14 Aug 2018 11:29

Tgt Ion: 75 Resp: 2012895
 Ion Ratio Lower Upper
 75 100
 77 32.1 21.8 40.6



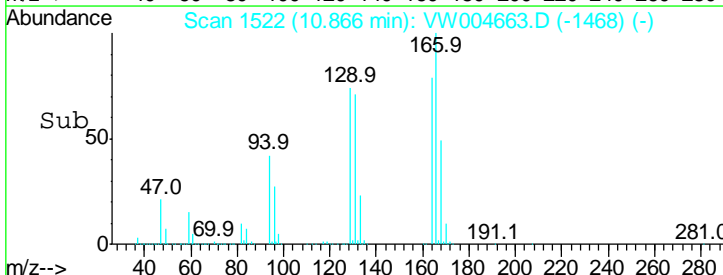
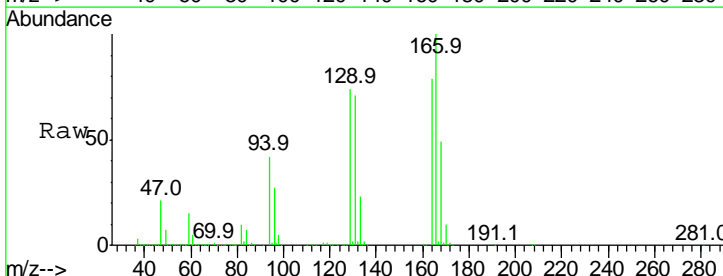
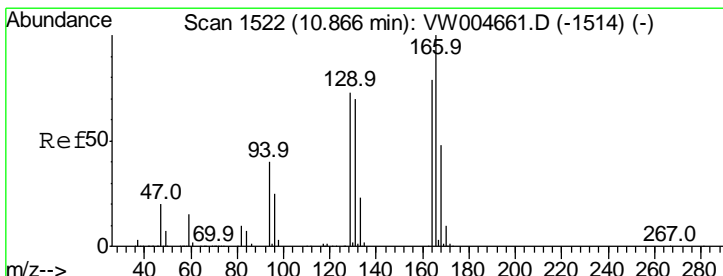
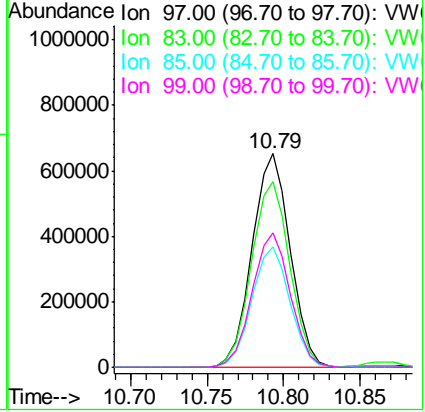


#46
 1,1,2-Trichloroethane
 Concen: 99.805 ug/L
 RT: 10.79 min Scan# 1510
 Delta R.T. 0.00 min
 Lab File: VW004663.D
 Acq: 14 Aug 2018 11:29

Instrument :
 MSVOA_W
 ClientSampled :
 VSTD10094

Tgt Ion: 97 Resp: 1130178

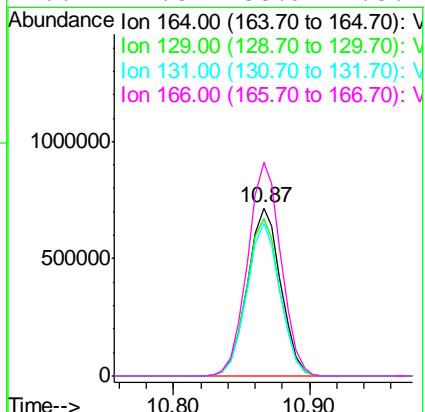
Ion	Ratio	Lower	Upper
97	100		
83	86.7	60.6	112.6
85	56.3	37.9	70.5
99	62.7	43.8	81.4

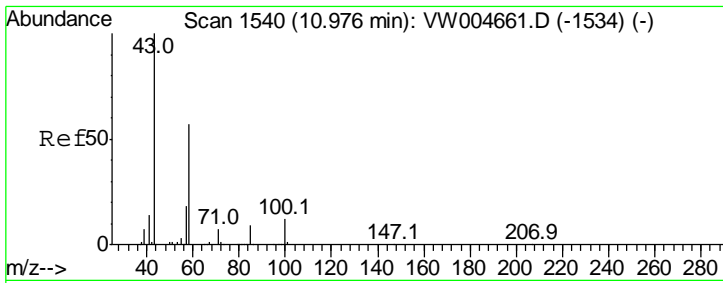


#47
 Tetrachloroethene
 Concen: 112.318 ug/L
 RT: 10.87 min Scan# 1522
 Delta R.T. 0.00 min
 Lab File: VW004663.D
 Acq: 14 Aug 2018 11:29

Tgt Ion: 164 Resp: 1229381

Ion	Ratio	Lower	Upper
164	100		
129	94.2	65.0	120.6
131	90.7	62.2	115.4
166	127.3	88.9	165.1



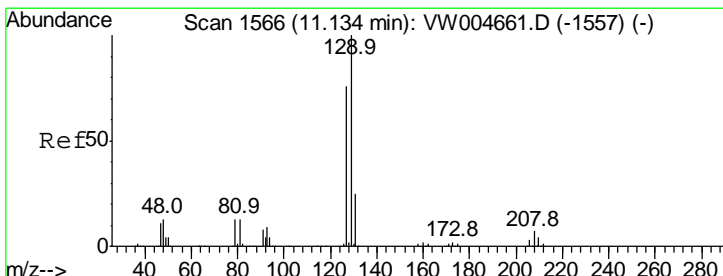
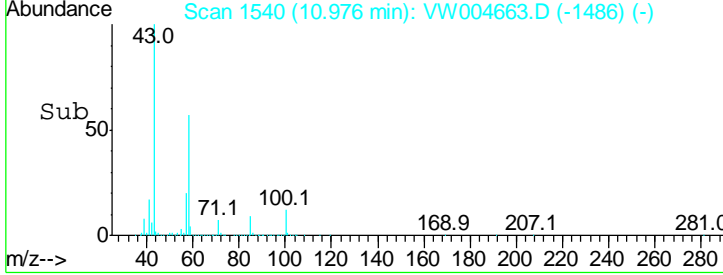
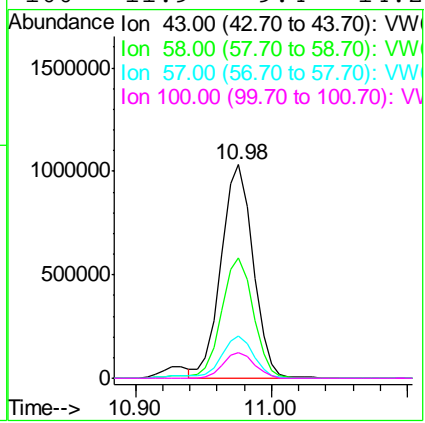
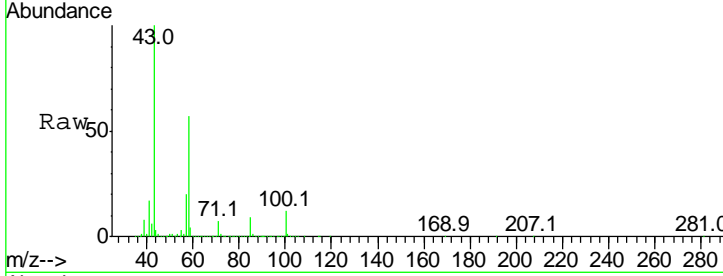


#49
 2-Hexanone
 Concen: 205.698 ug/L
 RT: 10.98 min Scan# 1540
 Delta R.T. 0.00 min
 Lab File: VW004663.D
 Acq: 14 Aug 2018 11:29

Instrument : MSVOA_W
 ClientSampled : VSTD10094

Tgt Ion: 43 Resp: 1688247

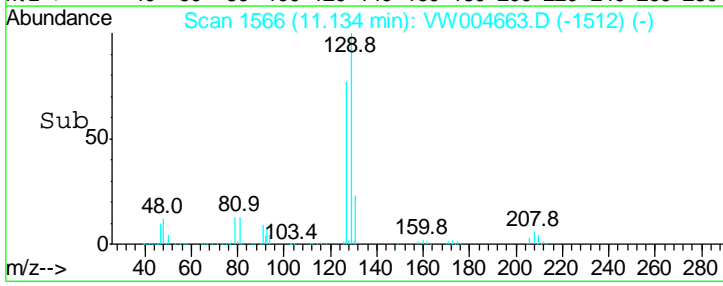
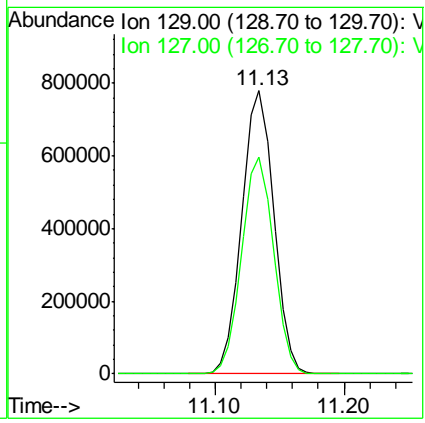
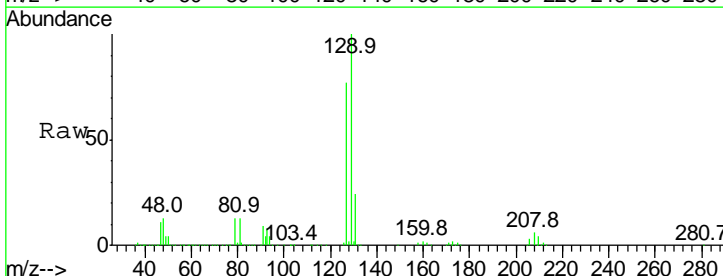
Ion	Ratio	Lower	Upper
43	100		
58	56.2	44.4	66.6
57	19.3	14.8	22.2
100	11.9	9.4	14.2

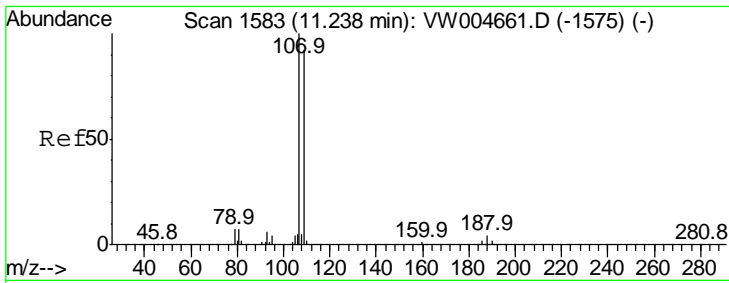


#50
 Dibromochloromethane
 Concen: 106.633 ug/L
 RT: 11.13 min Scan# 1566
 Delta R.T. 0.00 min
 Lab File: VW004663.D
 Acq: 14 Aug 2018 11:29

Tgt Ion: 129 Resp: 1339496

Ion	Ratio	Lower	Upper
129	100		
127	76.8	53.3	98.9



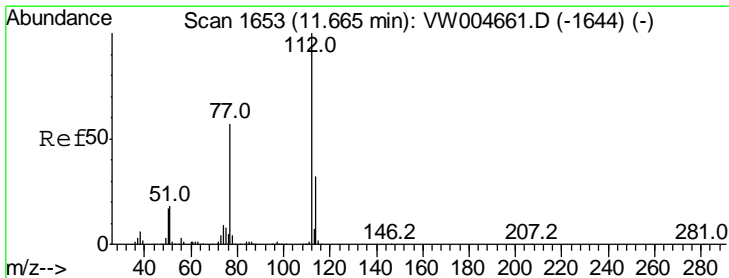
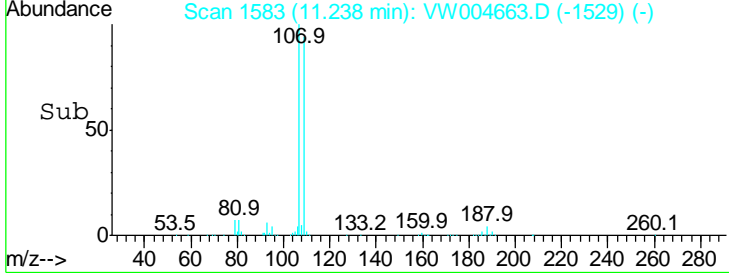
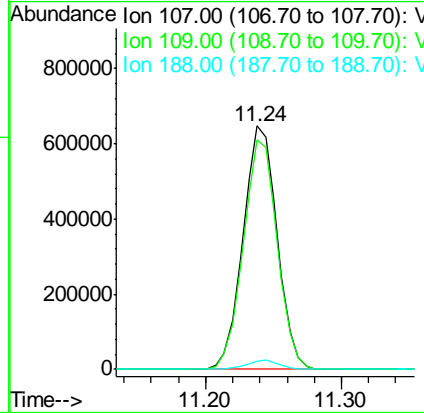
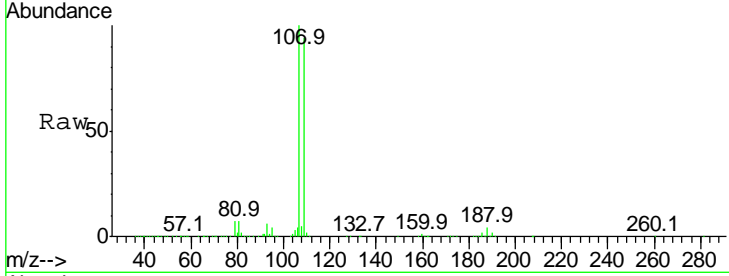


#51
 1,2-Dibromoethane
 Concen: 104.232 ug/L
 RT: 11.24 min Scan# 1583
 Delta R.T. 0.00 min
 Lab File: VW004663.D
 Acq: 14 Aug 2018 11:29

Instrument :
 MSVOA_W
 ClientSampled :
 VSTD10094

Tgt Ion:107 Resp: 1131406

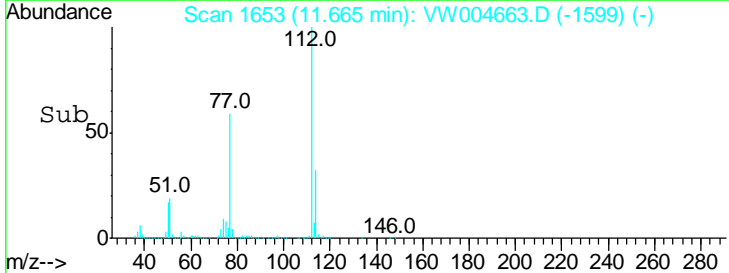
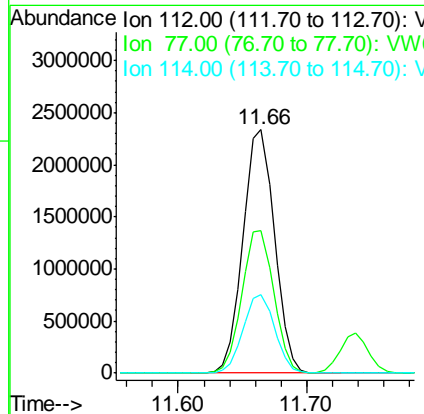
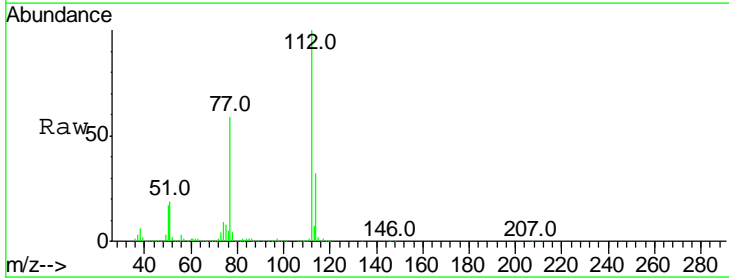
Ion	Ratio	Lower	Upper
107	100		
109	94.4	64.5	119.9
188	3.6	2.8	4.2

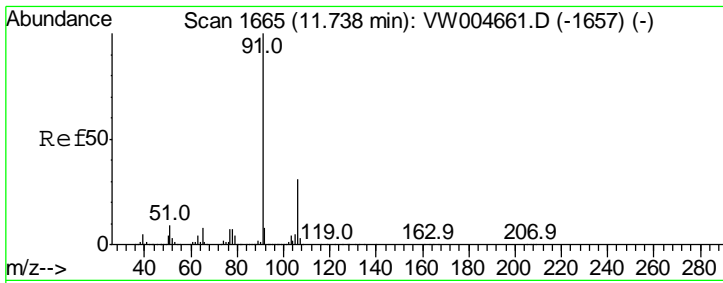


#52
 Chlorobenzene
 Concen: 105.595 ug/L
 RT: 11.66 min Scan# 1653
 Delta R.T. 0.00 min
 Lab File: VW004663.D
 Acq: 14 Aug 2018 11:29

Tgt Ion:112 Resp: 3952361

Ion	Ratio	Lower	Upper
112	100		
77	58.6	46.0	69.0
114	32.3	22.3	41.5

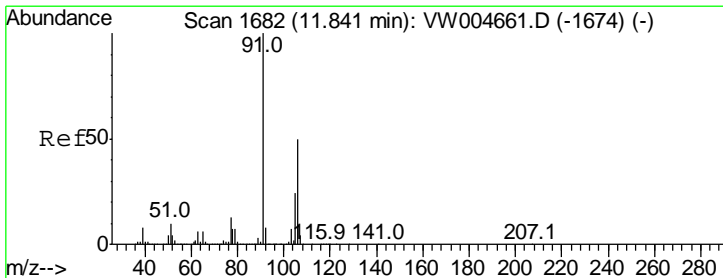
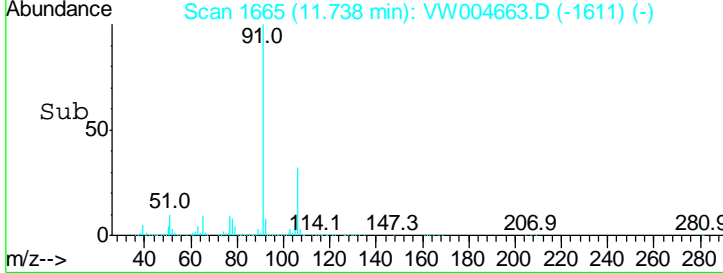
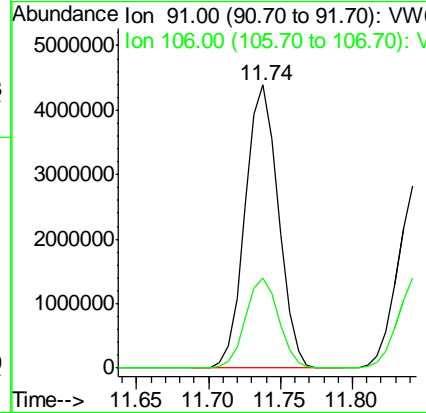
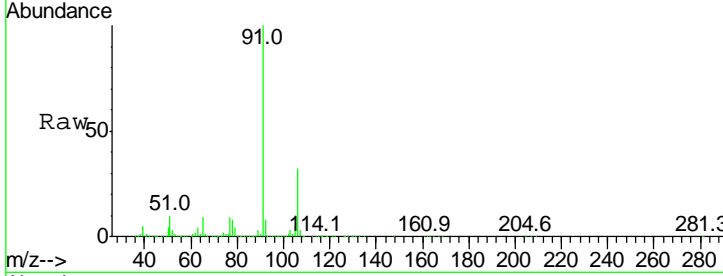




#53
 Ethylbenzene
 Concen: 112.747 ug/L
 RT: 11.74 min Scan# 1665
 Delta R.T. 0.00 min
 Lab File: VW004663.D
 Acq: 14 Aug 2018 11:29

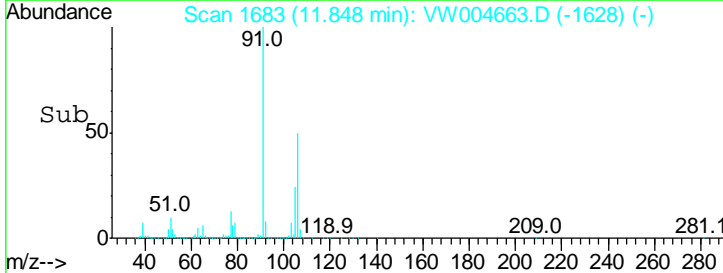
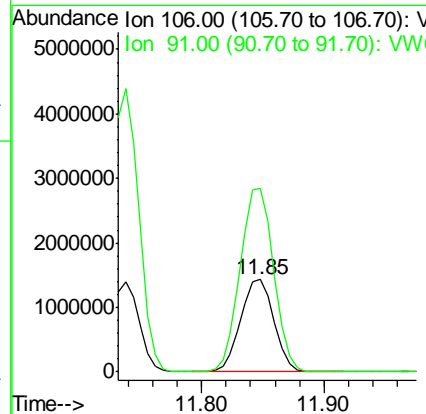
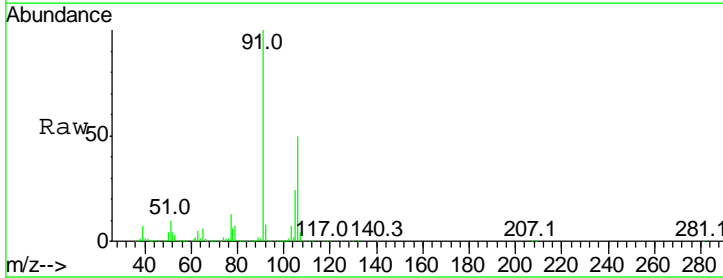
Instrument :
 MSVOA_W
 ClientSampled :
 VSTD10094

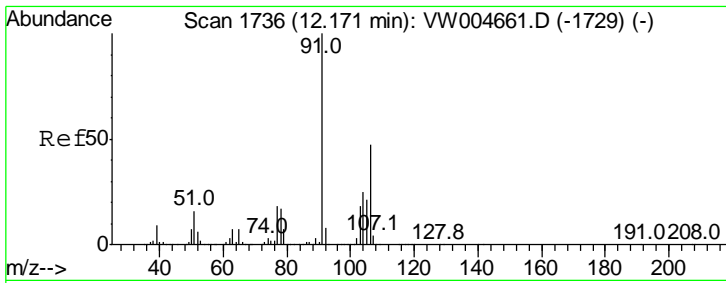
Tgt Ion: 91 Resp: 7012079
 Ion Ratio Lower Upper
 91 100
 106 31.9 22.0 40.8



#54
 m,p-Xylene
 Concen: 116.324 ug/L
 RT: 11.85 min Scan# 1683
 Delta R.T. 0.01 min
 Lab File: VW004663.D
 Acq: 14 Aug 2018 11:29

Tgt Ion: 106 Resp: 2699140
 Ion Ratio Lower Upper
 106 100
 91 198.6 139.2 258.4

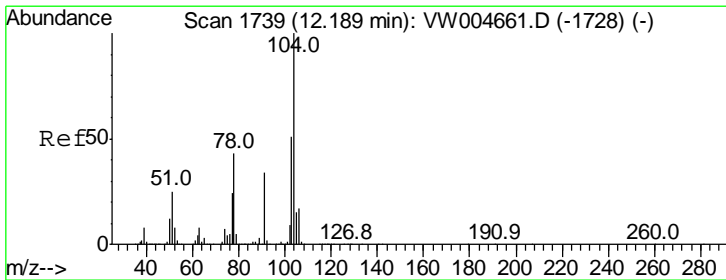
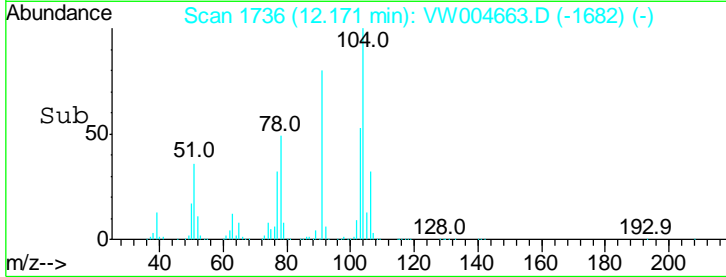
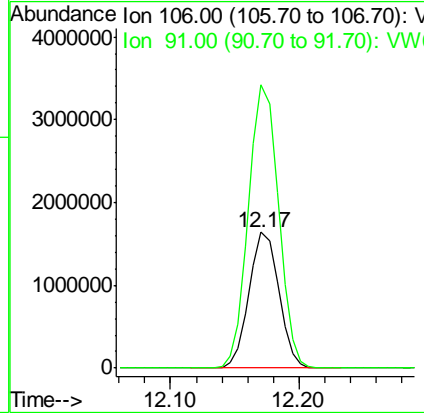
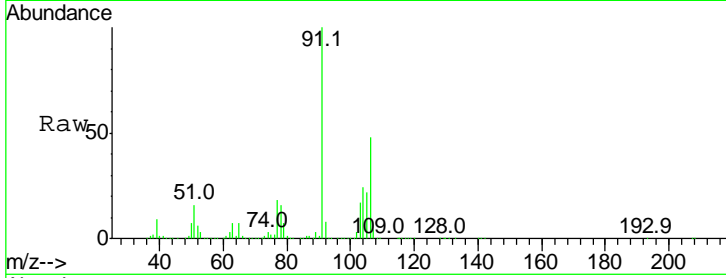




#55
 o-xylene
 Concen: 119.311 ug/L
 RT: 12.17 min Scan# 1736
 Delta R.T. 0.00 min
 Lab File: VW004663.D
 Acq: 14 Aug 2018 11:29

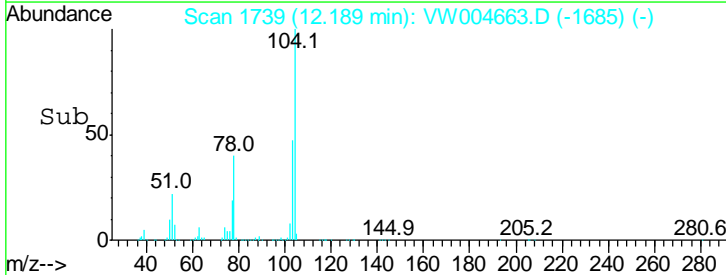
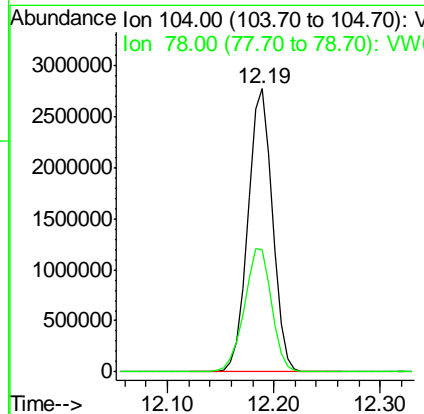
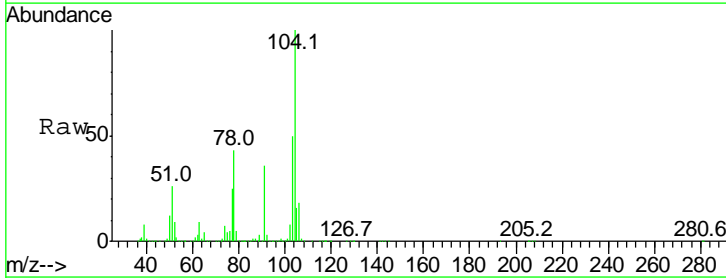
Instrument :
 MSVOA_W
 ClientSampled :
 VSTD10094

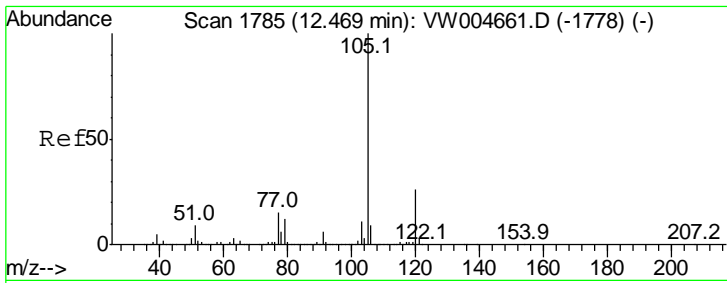
Tgt Ion:106 Resp: 2623171
 Ion Ratio Lower Upper
 106 100
 91 208.6 150.1 278.7



#56
 Styrene
 Concen: 117.007 ug/L
 RT: 12.19 min Scan# 1739
 Delta R.T. 0.00 min
 Lab File: VW004663.D
 Acq: 14 Aug 2018 11:29

Tgt Ion:104 Resp: 4482659
 Ion Ratio Lower Upper
 104 100
 78 43.1 29.9 55.5

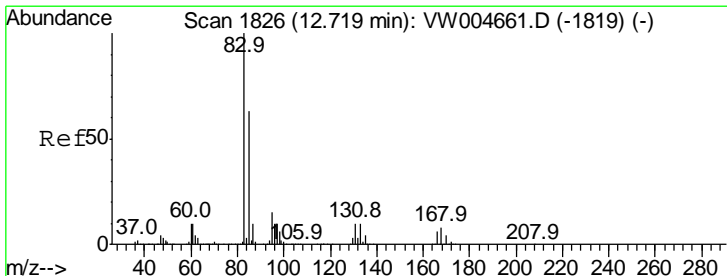
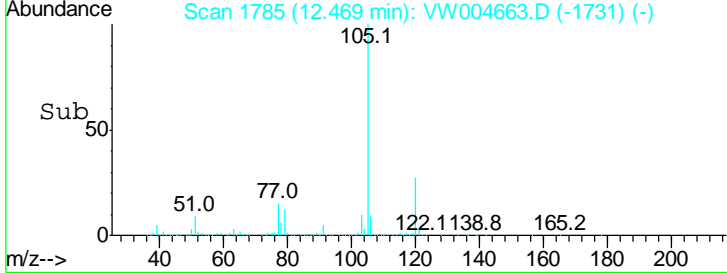
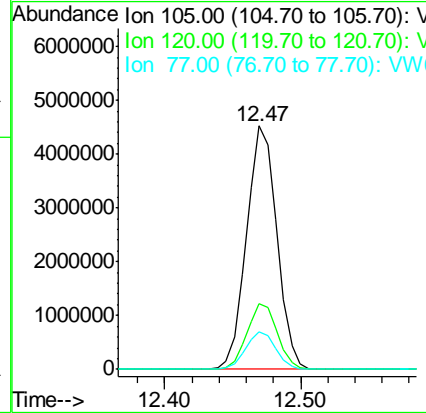
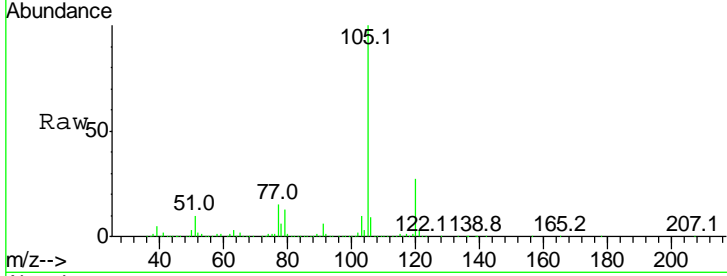




#57
 Isopropylbenzene
 Concen: 118.479 ug/L
 RT: 12.47 min Scan# 1785
 Delta R.T. 0.00 min
 Lab File: VW004663.D
 Acq: 14 Aug 2018 11:29

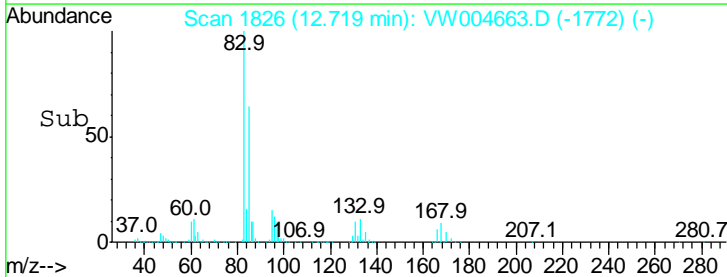
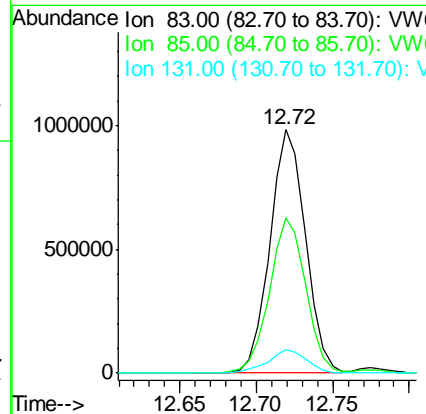
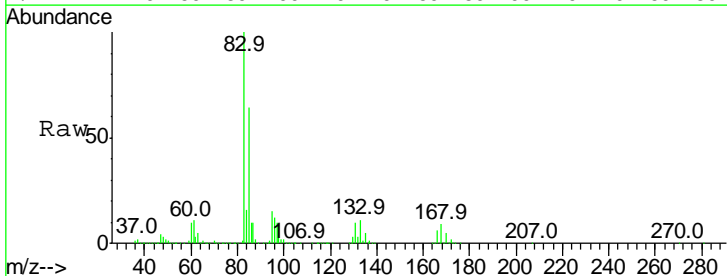
Instrument :
 MSVOA_W
 ClientSampled :
 VSTD10094

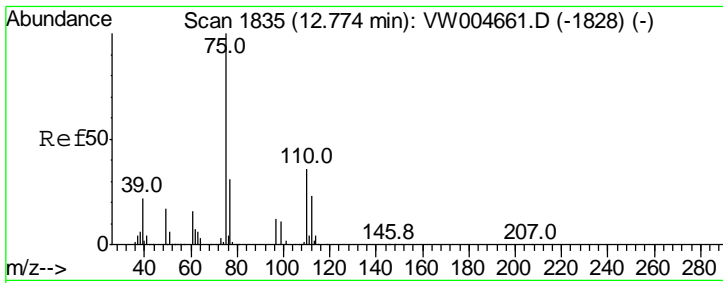
Tgt Ion	Resp	Lower	Upper
105	100		
120	26.9	21.2	31.8
77	15.3	12.1	18.1



#58
 1,1,2,2-Tetrachloroethane
 Concen: 96.870 ug/L
 RT: 12.72 min Scan# 1826
 Delta R.T. 0.00 min
 Lab File: VW004663.D
 Acq: 14 Aug 2018 11:29

Tgt Ion	Resp	Lower	Upper
83	100		
85	64.0	44.4	82.5
131	9.6	8.2	12.4

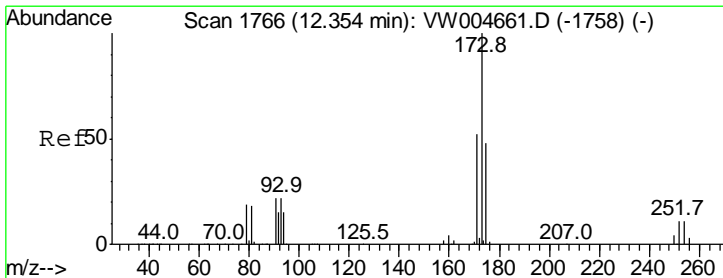
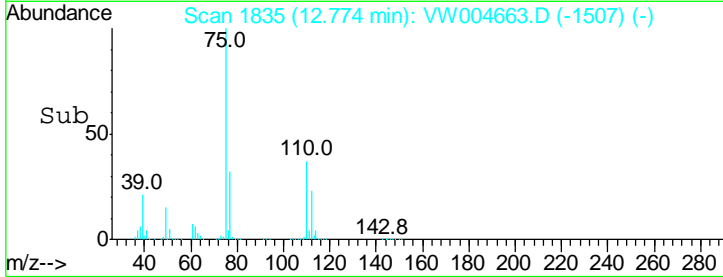
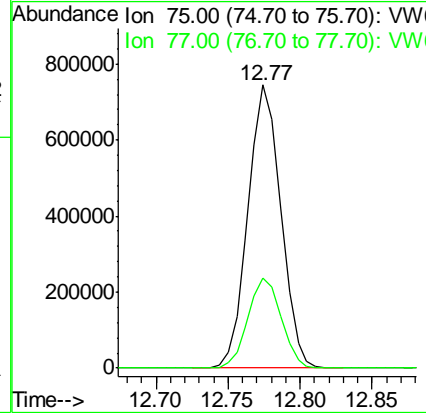
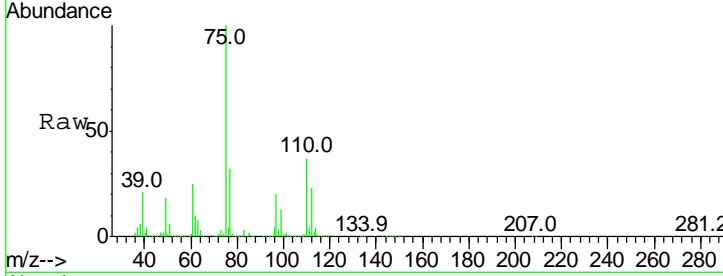




#59
 1,2,3-Trichloropropane
 Concen: 95.778 ug/L
 RT: 12.77 min Scan# 1835
 Delta R.T. 0.00 min
 Lab File: VW004663.D
 Acq: 14 Aug 2018 11:29

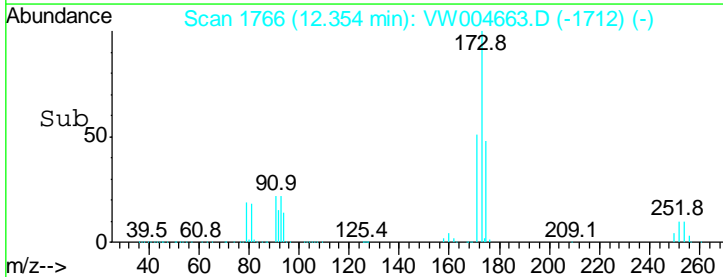
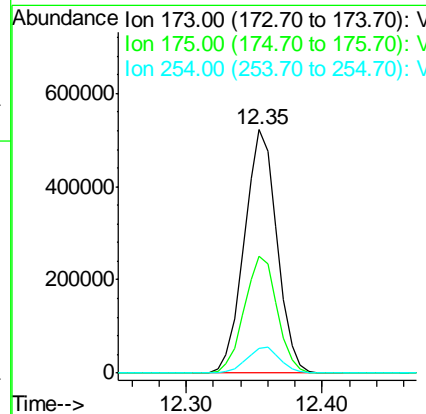
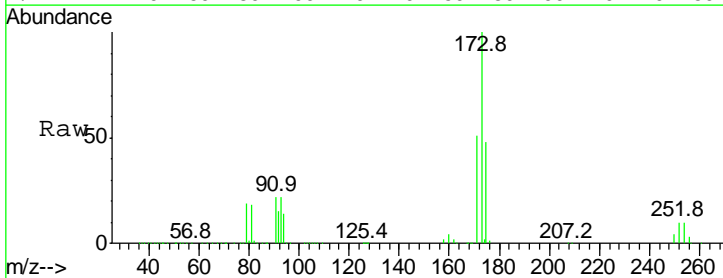
Instrument :
 MSVOA_W
 ClientSampled :
 VSTD10094

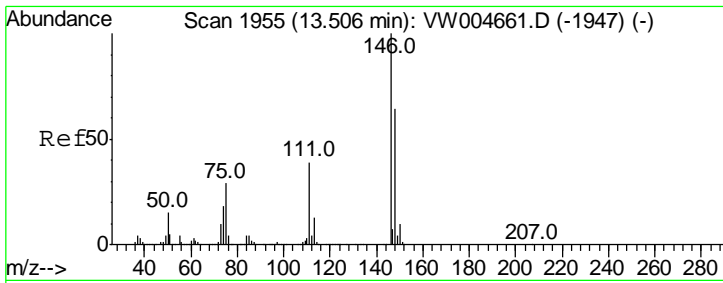
Tgt Ion: 75 Resp: 1175686
 Ion Ratio Lower Upper
 75 100
 77 32.2 25.8 38.6



#62
 Bromoform
 Concen: 102.552 ug/L
 RT: 12.35 min Scan# 1766
 Delta R.T. 0.00 min
 Lab File: VW004663.D
 Acq: 14 Aug 2018 11:29

Tgt Ion: 173 Resp: 872300
 Ion Ratio Lower Upper
 173 100
 175 48.5 39.2 58.8
 254 10.8 8.8 13.2

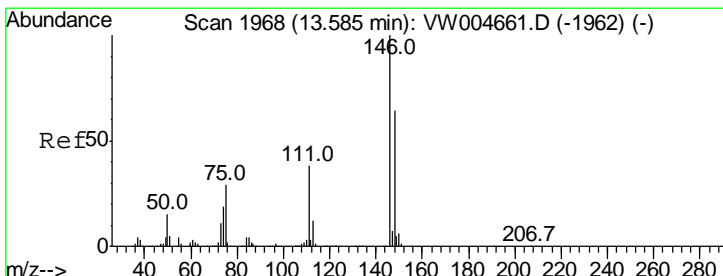
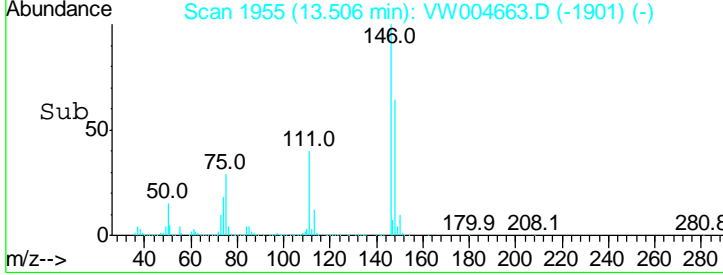
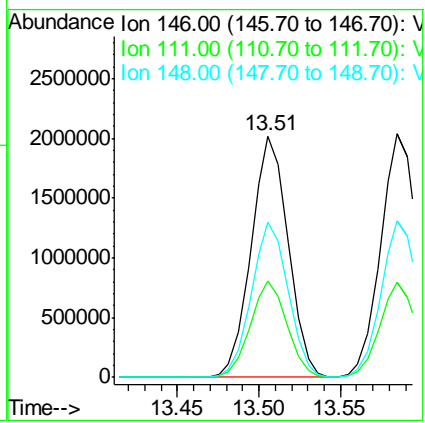
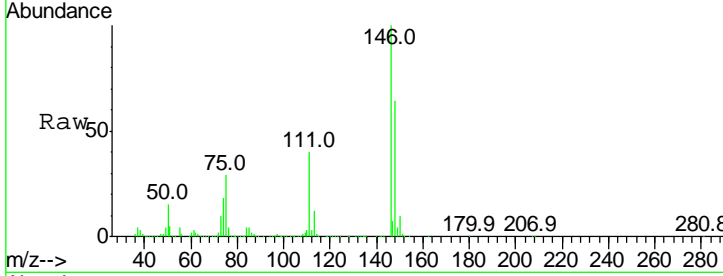




#63
 1,3-Dichlorobenzene
 Concen: 108.938 ug/L
 RT: 13.51 min Scan# 1955
 Delta R.T. 0.00 min
 Lab File: VW004663.D
 Acq: 14 Aug 2018 11:29

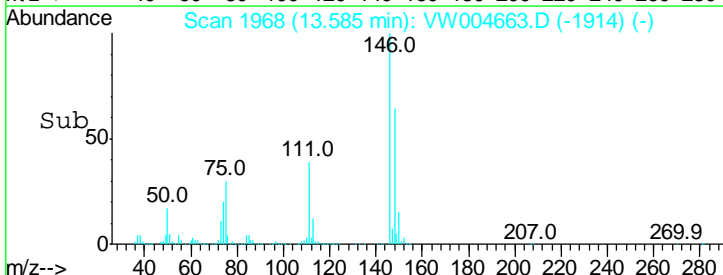
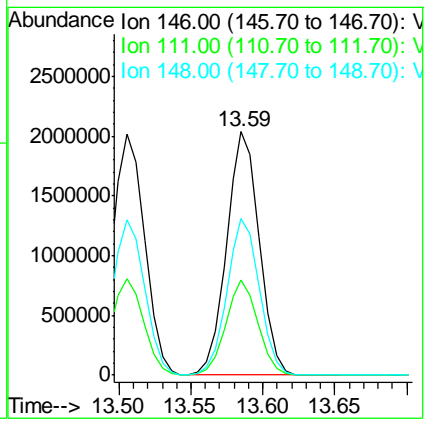
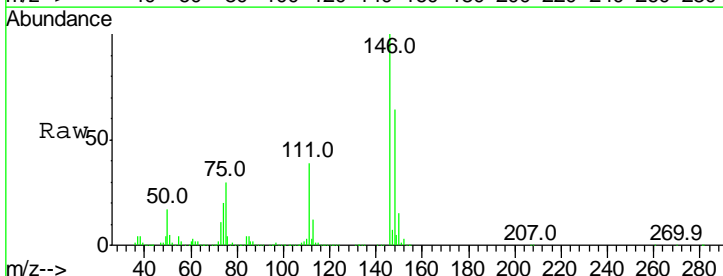
Instrument : MSVOA_W
 ClientSampled : VSTD10094

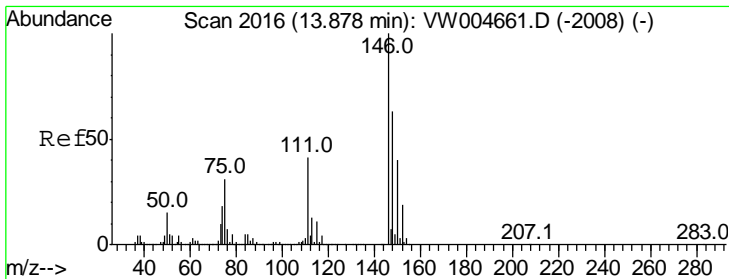
Tgt Ion	Resp	Lower	Upper
146	100		
111	39.8	27.5	51.1
148	64.2	45.1	83.9



#64
 1,4-Dichlorobenzene
 Concen: 103.077 ug/L
 RT: 13.59 min Scan# 1968
 Delta R.T. 0.00 min
 Lab File: VW004663.D
 Acq: 14 Aug 2018 11:29

Tgt Ion	Resp	Lower	Upper
146	100		
111	39.0	26.7	49.5
148	64.3	44.8	83.2

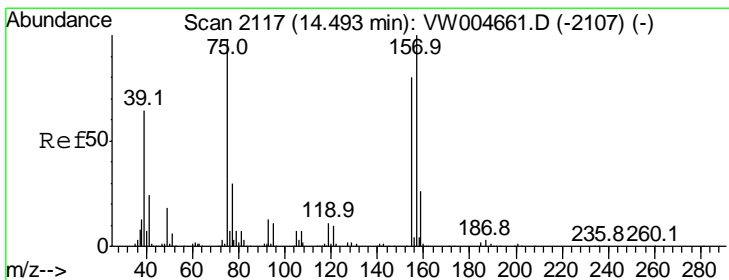
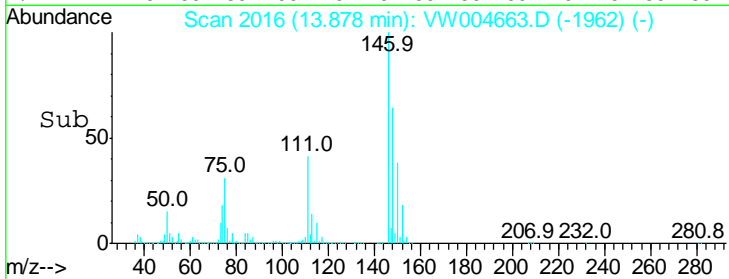
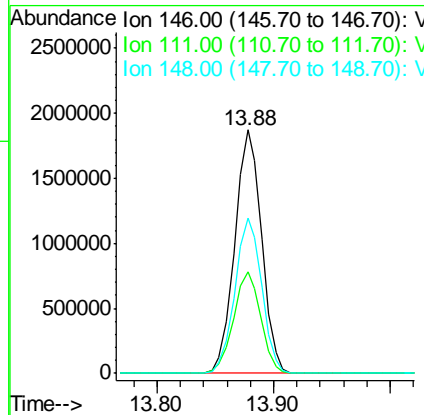
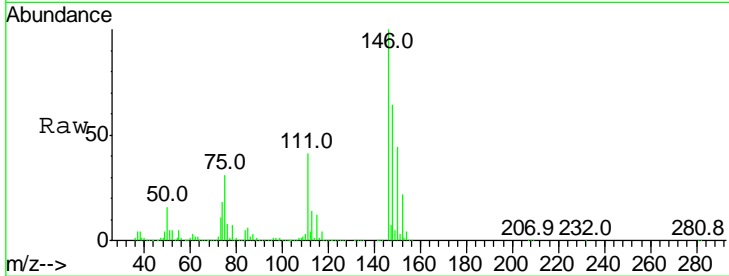




#65
 1,2-Dichlorobenzene
 Concen: 102.748 ug/L
 RT: 13.88 min Scan# 2016
 Delta R.T. 0.00 min
 Lab File: VW004663.D
 Acq: 14 Aug 2018 11:29

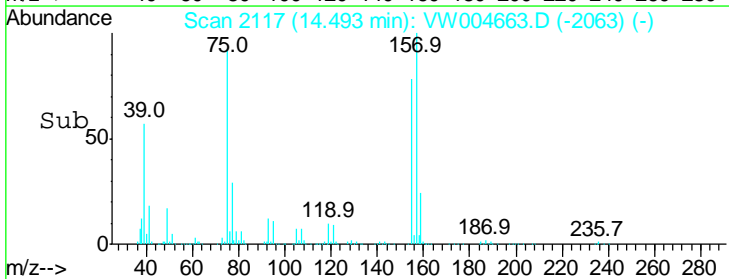
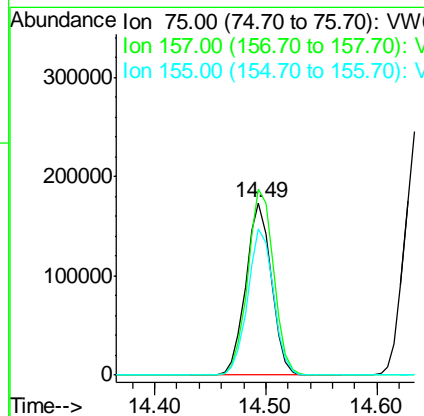
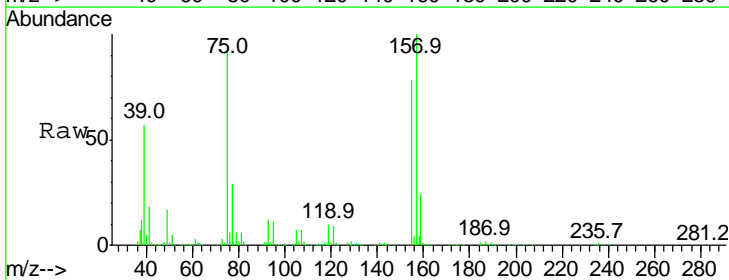
Instrument :
 MSVOA_W
 ClientSampled :
 VSTD10094

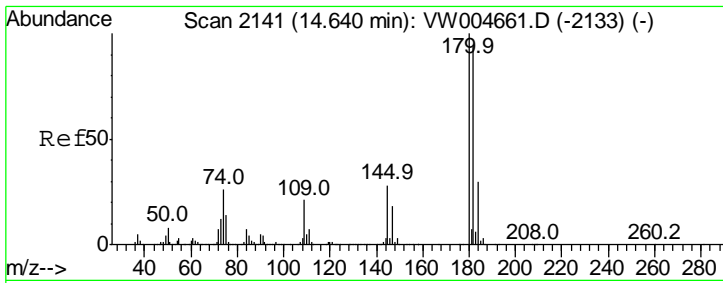
Tgt Ion	Resp	Lower	Upper
146	100		
111	41.5	32.9	49.3
148	63.8	50.7	76.1



#66
 1,2-Dibromo-3-chloropropane
 Concen: 92.179 ug/L
 RT: 14.49 min Scan# 2117
 Delta R.T. 0.00 min
 Lab File: VW004663.D
 Acq: 14 Aug 2018 11:29

Tgt Ion	Resp	Lower	Upper
75	100		
157	108.5	81.8	122.8
155	84.9	65.4	98.0



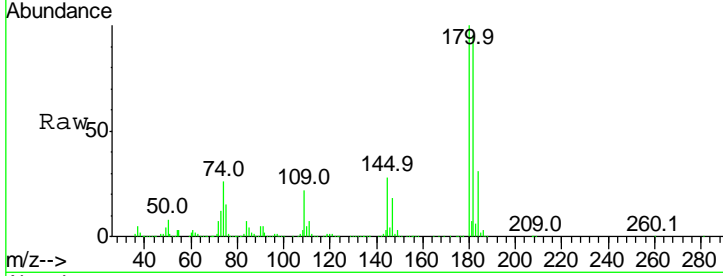


#67
 1,3,5-Trichlorobenzene
 Concen: 108.951 ug/L
 RT: 14.64 min Scan# 2141
 Delta R.T. 0.00 min
 Lab File: VW004663.D
 Acq: 14 Aug 2018 11:29

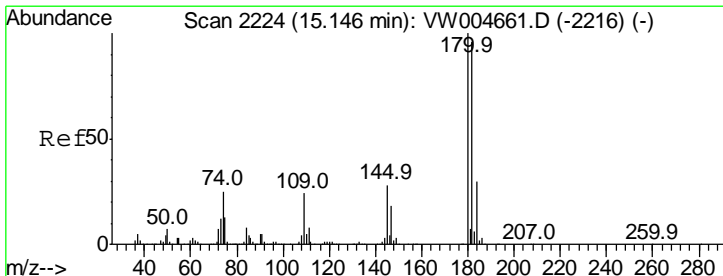
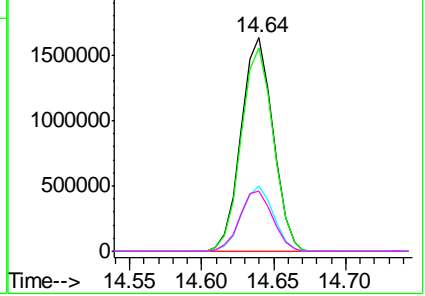
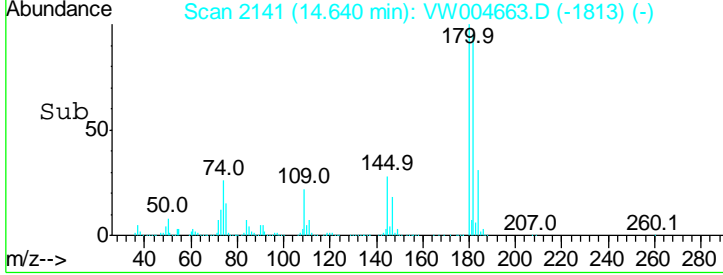
Instrument : MSVOA_W
 ClientSampled : VSTD10094

Tgt Ion:180 Resp: 2515221

Ion	Ratio	Lower	Upper
180	100		
182	95.6	76.1	114.1
184	30.4	24.2	36.4
145	29.0	22.6	34.0



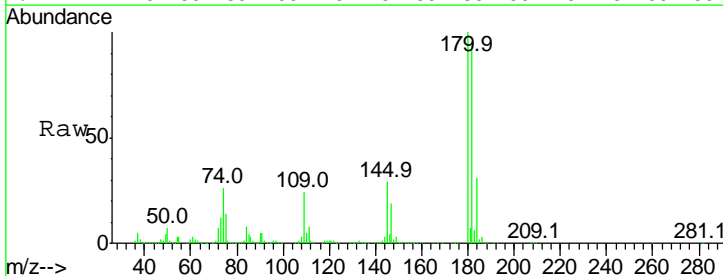
Abundance Ion 180.00 (179.70 to 180.70): V
 Ion 182.00 (181.70 to 182.70): V
 Ion 184.00 (183.70 to 184.70): V
 Ion 145.00 (144.70 to 145.70): V



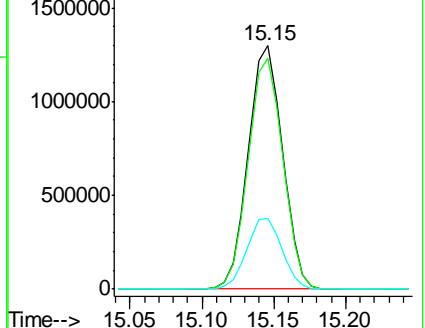
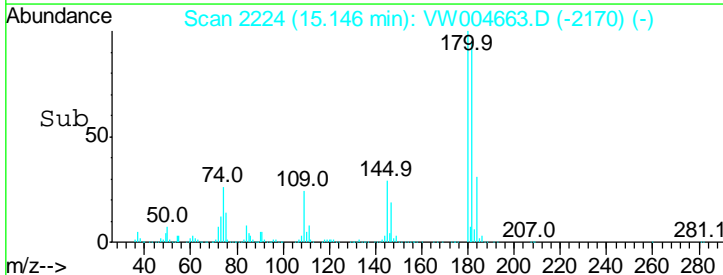
#68
 1,2,4-trichlorobenzene
 Concen: 114.845 ug/L
 RT: 15.15 min Scan# 2224
 Delta R.T. 0.00 min
 Lab File: VW004663.D
 Acq: 14 Aug 2018 11:29

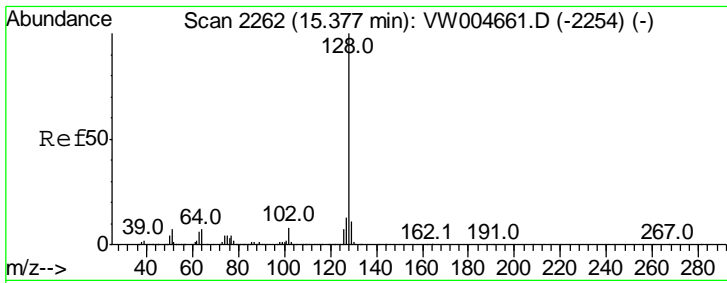
Tgt Ion:180 Resp: 2144932

Ion	Ratio	Lower	Upper
180	100		
182	95.4	76.7	115.1
145	29.7	23.4	35.2



Abundance Ion 180.00 (179.70 to 180.70): V
 Ion 182.00 (181.70 to 182.70): V
 Ion 145.00 (144.70 to 145.70): V



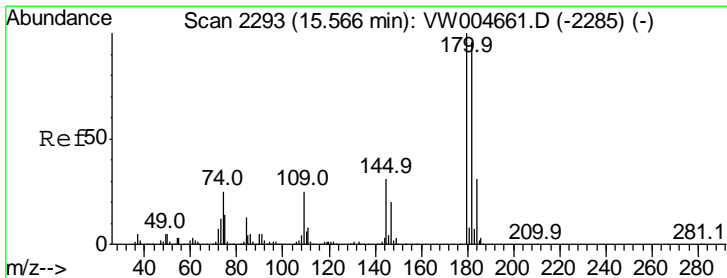
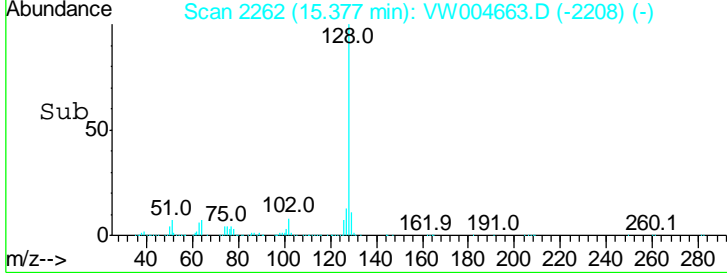
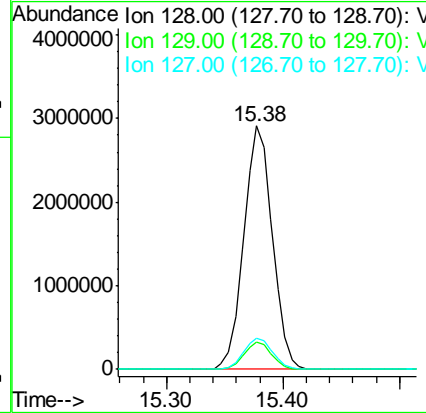
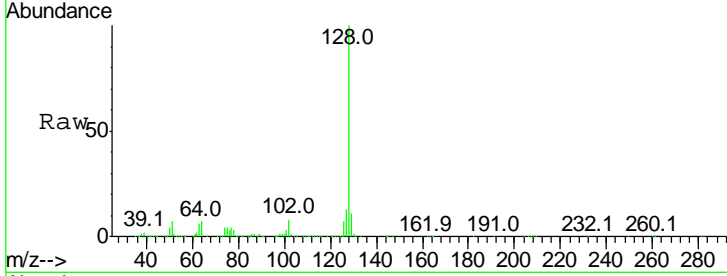


#69
 Naphthalene
 Concen: 116.778 ug/L
 RT: 15.38 min Scan# 2262
 Delta R.T. 0.00 min
 Lab File: VW004663.D
 Acq: 14 Aug 2018 11:29

Instrument :
 MSVOA_W
 ClientSampled :
 VSTD10094

Tgt Ion:128 Resp: 4973919

Ion	Ratio	Lower	Upper
128	100		
129	11.0	8.8	13.2
127	12.9	10.6	15.8



#70
 1,2,3-Trichlorobenzene
 Concen: 110.474 ug/L
 RT: 15.57 min Scan# 2293
 Delta R.T. 0.00 min
 Lab File: VW004663.D
 Acq: 14 Aug 2018 11:29

Tgt Ion:180 Resp: 2009342

Ion	Ratio	Lower	Upper
180	100		
182	95.6	75.8	113.8
145	31.5	24.4	36.6

