

Data Path : Z:\voasrv\HPCHEM1\MSVOA_W\Data\VW081922\
 Data File : VW024291.D
 Acq On : 19 Aug 2022 15:07
 Operator : SY/VA
 Sample : VIBLK
 Misc : 5.00g/10mL/MSVOA_W/SOIL
 ALS Vial : 1 Sample Multiplier: 1

Instrument :
 MSVOA_W
 ClientSampleId :
 VIBLK540

Quant Time: Aug 20 00:58:50 2022
 Quant Method : Z:\voasrv\HPCHEM1\MSVOA_W\Method\SFAMWLM080422SMA.M
 Quant Title : SFAM01.0
 QLast Update : Sat Aug 20 00:56:10 2022
 Response via : Initial Calibration

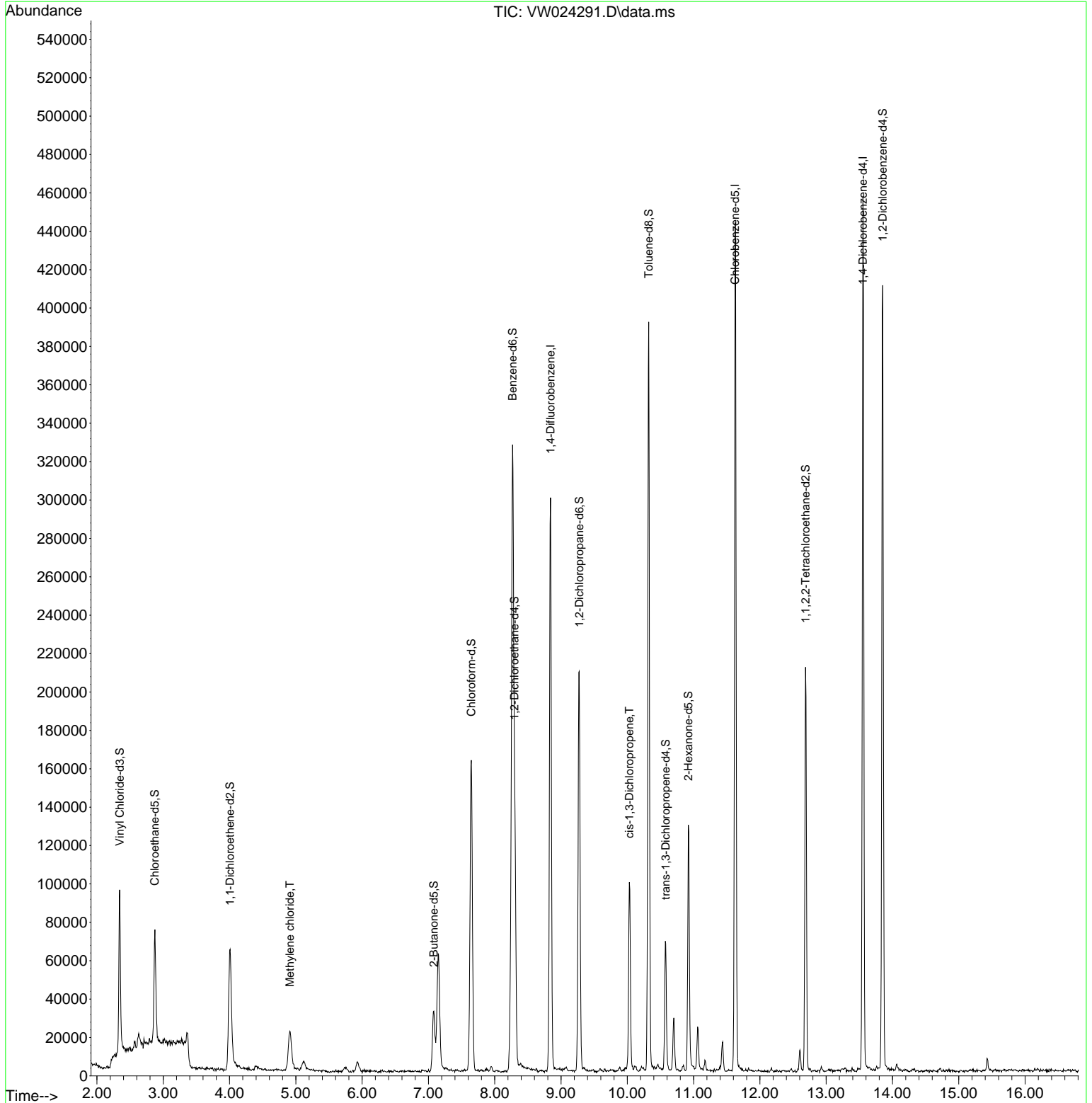
Compound	R.T.	QIon	Response	Conc	Units	Dev(Min)
Internal Standards						
1) 1,4-Difluorobenzene	8.842	114	242838	25.000	ug/L	0.00
28) Chlorobenzene-d5	11.628	117	236948	25.000	ug/L	0.00
58) 1,4-Dichlorobenzene-d4	13.554	152	110234	25.000	ug/L	0.00
System Monitoring Compounds						
4) Vinyl Chloride-d3	2.343	65	87075	17.155	ug/L	0.00
Spiked Amount	25.000	Range 30 - 150	Recovery =	68.600%		
7) Chloroethane-d5	2.873	69	64042	20.254	ug/L	0.00
Spiked Amount	25.000	Range 30 - 150	Recovery =	81.000%		
11) 1,1-Dichloroethene-d2	4.007	63	67500	11.669	ug/L	0.00
Spiked Amount	25.000	Range 45 - 110	Recovery =	46.680%		
21) 2-Butanone-d5	7.080	46	51393	54.422	ug/L	0.00
Spiked Amount	50.000	Range 20 - 135	Recovery =	108.840%		
24) Chloroform-d	7.647	84	161858	22.028	ug/L	0.00
Spiked Amount	25.000	Range 40 - 150	Recovery =	88.120%		
26) 1,2-Dichloroethane-d4	8.299	65	93336	22.880	ug/L	0.00
Spiked Amount	25.000	Range 70 - 130	Recovery =	91.520%		
32) Benzene-d6	8.269	84	287913	20.603	ug/L	0.00
Spiked Amount	25.000	Range 20 - 135	Recovery =	82.400%		
36) 1,2-Dichloropropane-d6	9.275	67	92541	22.429	ug/L	0.00
Spiked Amount	25.000	Range 70 - 120	Recovery =	89.720%		
41) Toluene-d8	10.323	98	244585	18.725	ug/L	0.00
Spiked Amount	25.000	Range 30 - 130	Recovery =	74.920%		
43) trans-1,3-Dichloroprop...	10.579	79	35495	19.641	ug/L	0.00
Spiked Amount	25.000	Range 30 - 135	Recovery =	78.560%		
47) 2-Hexanone-d5	10.921	63	39317	51.591	ug/L	0.00
Spiked Amount	50.000	Range 20 - 135	Recovery =	103.180%		
56) 1,1,2,2-Tetrachloroeth...	12.689	84	96508	24.109	ug/L	0.00
Spiked Amount	25.000	Range 45 - 120	Recovery =	96.440%		
66) 1,2-Dichlorobenzene-d4	13.853	152	106076	26.296	ug/L	0.00
Spiked Amount	25.000	Range 75 - 120	Recovery =	105.200%		
Target Compounds						
16) Methylene chloride	4.910	84	16731	3.907	ug/L	94
39) cis-1,3-Dichloropropene	10.031	75	3498	0.687	ug/L	90

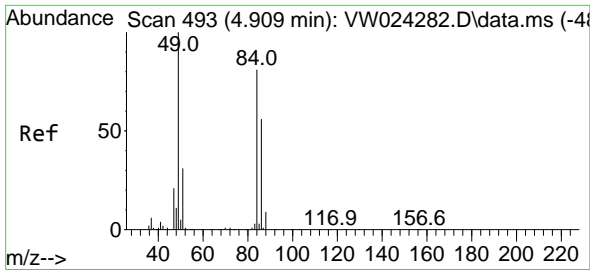
(#) = qualifier out of range (m) = manual integration (+) = signals summed

Data Path : Z:\voasrv\HPCHEM1\MSVOA_W\Data\VW081922\
 Data File : VW024291.D
 Acq On : 19 Aug 2022 15:07
 Operator : SY/VA
 Sample : VIBLK
 Misc : 5.00g/10mL/MSVOA_W/SOIL
 ALS Vial : 1 Sample Multiplier: 1

Instrument :
 MSVOA_W
 ClientSampleId :
 VIBLK540

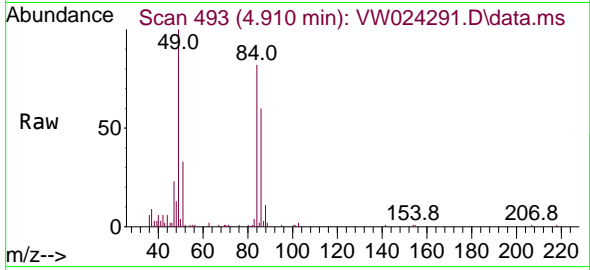
Quant Time: Aug 20 00:58:50 2022
 Quant Method : Z:\voasrv\HPCHEM1\MSVOA_W\Method\SFAMWLM080422SMA.M
 Quant Title : SFAM01.0
 QLast Update : Sat Aug 20 00:56:10 2022
 Response via : Initial Calibration



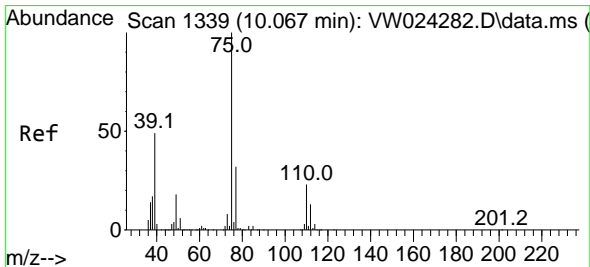
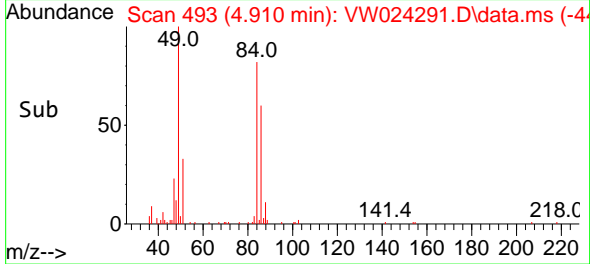
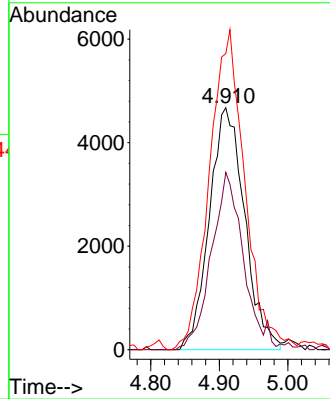


#16
 Methylene chloride
 Concen: 3.907 ug/L
 RT: 4.910 min Scan# 49
 Delta R.T. 0.000 min
 Lab File: VW024291.D
 Acq: 19 Aug 2022 15:07

Instrument :
 MSVOA_W
 ClientSampleId :
 VIBLK540



Tgt Ion: 84 Resp: 16731
 Ion Ratio Lower Upper
 84 100
 86 73.2 42.8 79.6
 49 122.3 85.3 158.3



#39
 cis-1,3-Dichloropropene
 Concen: 0.687 ug/L
 RT: 10.031 min Scan# 1333
 Delta R.T. -0.036 min
 Lab File: VW024291.D
 Acq: 19 Aug 2022 15:07

Tgt Ion: 75 Resp: 3498
 Ion Ratio Lower Upper
 75 100
 77 39.3 23.4 43.6

