

Data Path : Z:\voasrv\HPCHEM1\MSVOA_W\Data\VW081922\
 Data File : VW024290.D
 Acq On : 19 Aug 2022 14:42
 Operator : SY/VA
 Sample : N4267-04
 Misc : 6.22g/10mL/MSVOA_W/SOIL
 ALS Vial : 1 Sample Multiplier: 1

Instrument :
 MSVOA_W
 ClientSampleId :
 COZH0

Quant Time: Aug 20 00:58:09 2022
 Quant Method : Z:\voasrv\HPCHEM1\MSVOA_W\Method\SFAMWLM080422SMA.M
 Quant Title : SFAM01.0
 QLast Update : Sat Aug 20 00:56:10 2022
 Response via : Initial Calibration

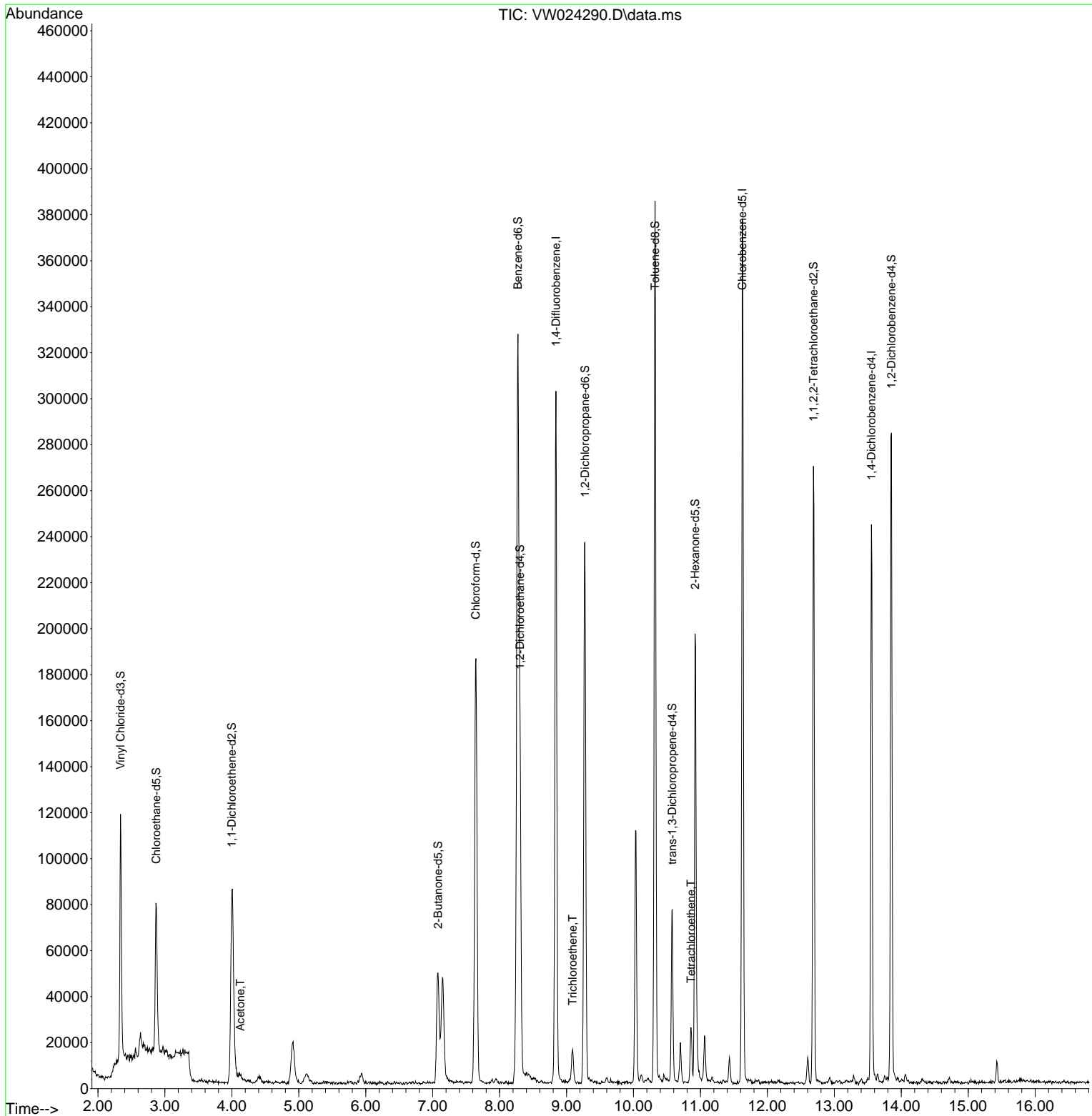
Compound	R.T.	QIon	Response	Conc	Units	Dev(Min)
Internal Standards						
1) 1,4-Difluorobenzene	8.841	114	236122	25.000	ug/L	0.00
28) Chlorobenzene-d5	11.627	117	200472	25.000	ug/L	0.00
58) 1,4-Dichlorobenzene-d4	13.554	152	59623	25.000	ug/L	0.00
System Monitoring Compounds						
4) Vinyl Chloride-d3	2.336	65	102293	20.726	ug/L	0.00
Spiked Amount	25.000	Range 30 - 150	Recovery =	82.920%		
7) Chloroethane-d5	2.873	69	73313	23.845	ug/L	0.00
Spiked Amount	25.000	Range 30 - 150	Recovery =	95.400%		
11) 1,1-Dichloroethene-d2	4.001	63	89867	15.977	ug/L	-0.01
Spiked Amount	25.000	Range 45 - 110	Recovery =	63.920%		
21) 2-Butanone-d5	7.079	46	77718	84.639	ug/L	0.00
Spiked Amount	50.000	Range 20 - 135	Recovery =	169.280%#		
24) Chloroform-d	7.640	84	185787	26.004	ug/L	0.00
Spiked Amount	25.000	Range 40 - 150	Recovery =	104.000%		
26) 1,2-Dichloroethane-d4	8.305	65	111968	28.228	ug/L	0.00
Spiked Amount	25.000	Range 70 - 130	Recovery =	112.920%		
32) Benzene-d6	8.274	84	311049	26.309	ug/L	0.00
Spiked Amount	25.000	Range 20 - 135	Recovery =	105.240%		
36) 1,2-Dichloropropane-d6	9.274	67	104708	29.995	ug/L	0.00
Spiked Amount	25.000	Range 70 - 120	Recovery =	120.000%		
41) Toluene-d8	10.323	98	249342	22.563	ug/L	0.00
Spiked Amount	25.000	Range 30 - 130	Recovery =	90.240%		
43) trans-1,3-Dichloroprop...	10.579	79	39288	25.695	ug/L	0.00
Spiked Amount	25.000	Range 30 - 135	Recovery =	102.800%		
47) 2-Hexanone-d5	10.920	63	60584	93.962	ug/L	0.00
Spiked Amount	50.000	Range 20 - 135	Recovery =	187.920%#		
56) 1,1,2,2-Tetrachloroeth...	12.688	84	125496	37.054	ug/L	0.00
Spiked Amount	25.000	Range 45 - 120	Recovery =	148.200%#		
66) 1,2-Dichlorobenzene-d4	13.853	152	72362	33.166	ug/L	0.00
Spiked Amount	25.000	Range 75 - 120	Recovery =	132.680%#		
Target Compounds						
13) Acetone	4.129	43	4328	6.402	ug/L	84
34) Trichloroethene	9.091	95	4528	1.447	ug/L #	91
46) Tetrachloroethene	10.859	164	5145	2.031	ug/L	87

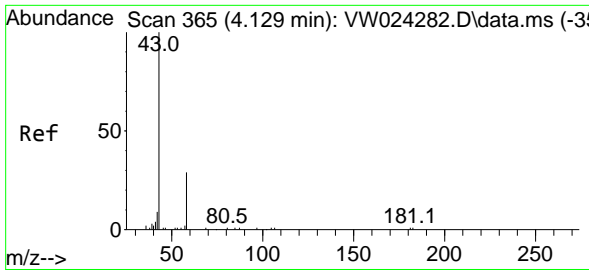
(#) = qualifier out of range (m) = manual integration (+) = signals summed

Data Path : Z:\voasrv\HPCHEM1\MSVOA_W\Data\VW081922\
 Data File : VW024290.D
 Acq On : 19 Aug 2022 14:42
 Operator : SY/VA
 Sample : N4267-04
 Misc : 6.22g/10mL/MSVOA_W/SOIL
 ALS Vial : 1 Sample Multiplier: 1

Instrument :
 MSVOA_W
 ClientSampleId :
 COZH0

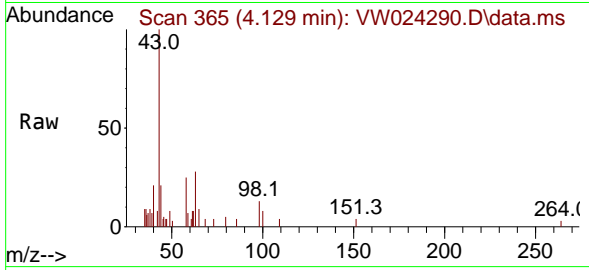
Quant Time: Aug 20 00:58:09 2022
 Quant Method : Z:\voasrv\HPCHEM1\MSVOA_W\Method\SFAMWLM080422SMA.M
 Quant Title : SFAM01.0
 QLast Update : Sat Aug 20 00:56:10 2022
 Response via : Initial Calibration



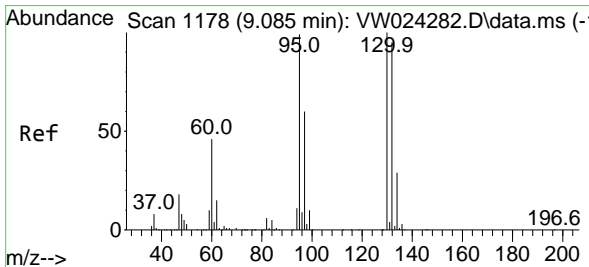
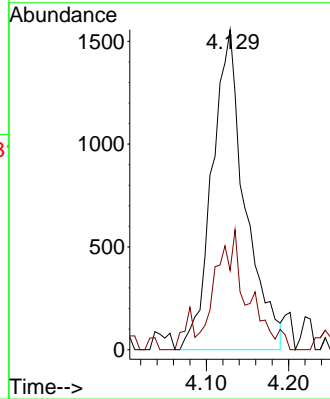
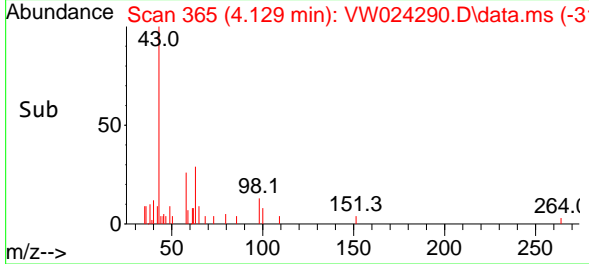


#13
 Acetone
 Concen: 6.402 ug/L
 RT: 4.129 min Scan# 301
 Delta R.T. -0.000 min
 Lab File: VW024290.D
 Acq: 19 Aug 2022 14:42

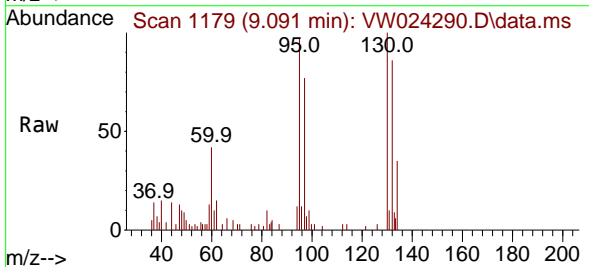
Instrument : MSVOA_W
 ClientSampleId : COZH0



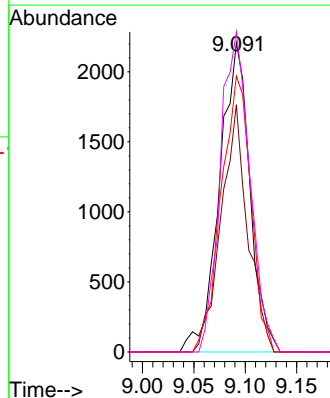
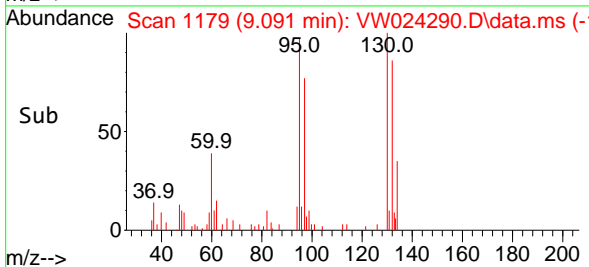
Tgt Ion: 43 Resp: 4328
 Ion Ratio Lower Upper
 43 100
 58 9.1 0.0 31.8

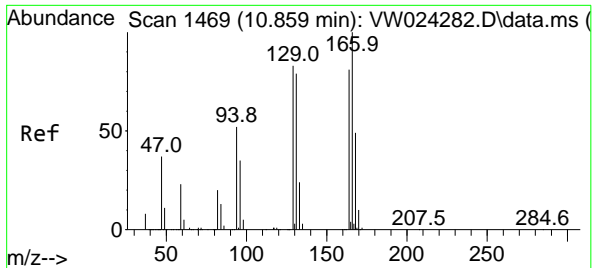


#34
 Trichloroethene
 Concen: 1.447 ug/L
 RT: 9.091 min Scan# 1179
 Delta R.T. 0.006 min
 Lab File: VW024290.D
 Acq: 19 Aug 2022 14:42



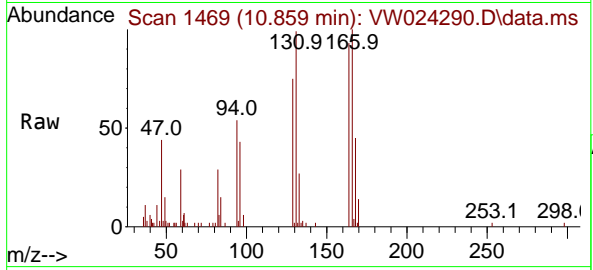
Tgt Ion: 95 Resp: 4528
 Ion Ratio Lower Upper
 95 100
 97 80.0 41.6 77.2#
 132 89.3 67.0 124.4
 130 103.6 73.1 135.8





#46
 Tetrachloroethene
 Concen: 2.031 ug/L
 RT: 10.859 min Scan# 14
 Delta R.T. -0.000 min
 Lab File: VW024290.D
 Acq: 19 Aug 2022 14:42

Instrument : MSVOA_W
 ClientSampleId : COZH0



Tgt Ion:164 Resp: 5145

Ion	Ratio	Lower	Upper
164	100		
129	81.1	63.1	117.3
131	106.4	63.9	118.7
166	107.7	86.8	161.2

