

Data Path : Z:\voasrv\HPCHEM1\MSVOA\_W\Data\VW082123\  
 Data File : VW026792.D  
 Acq On : 21 Aug 2023 15:28  
 Operator : SY/MD  
 Sample : 04037-17  
 Misc : 5.46g/10mL/MSVOA\_W/SOIL  
 ALS Vial : 1 Sample Multiplier: 1

Instrument :  
 MSVOA\_W  
 ClientSampleId :

Quant Time: Aug 22 01:34:06 2023  
 Quant Method : Z:\voasrv\HPCHEM1\MSVOA\_W\Method\SFAMWLM081023SMA.M  
 Quant Title : SFAM01.0  
 QLast Update : Tue Aug 22 01:31:05 2023  
 Response via : Initial Calibration

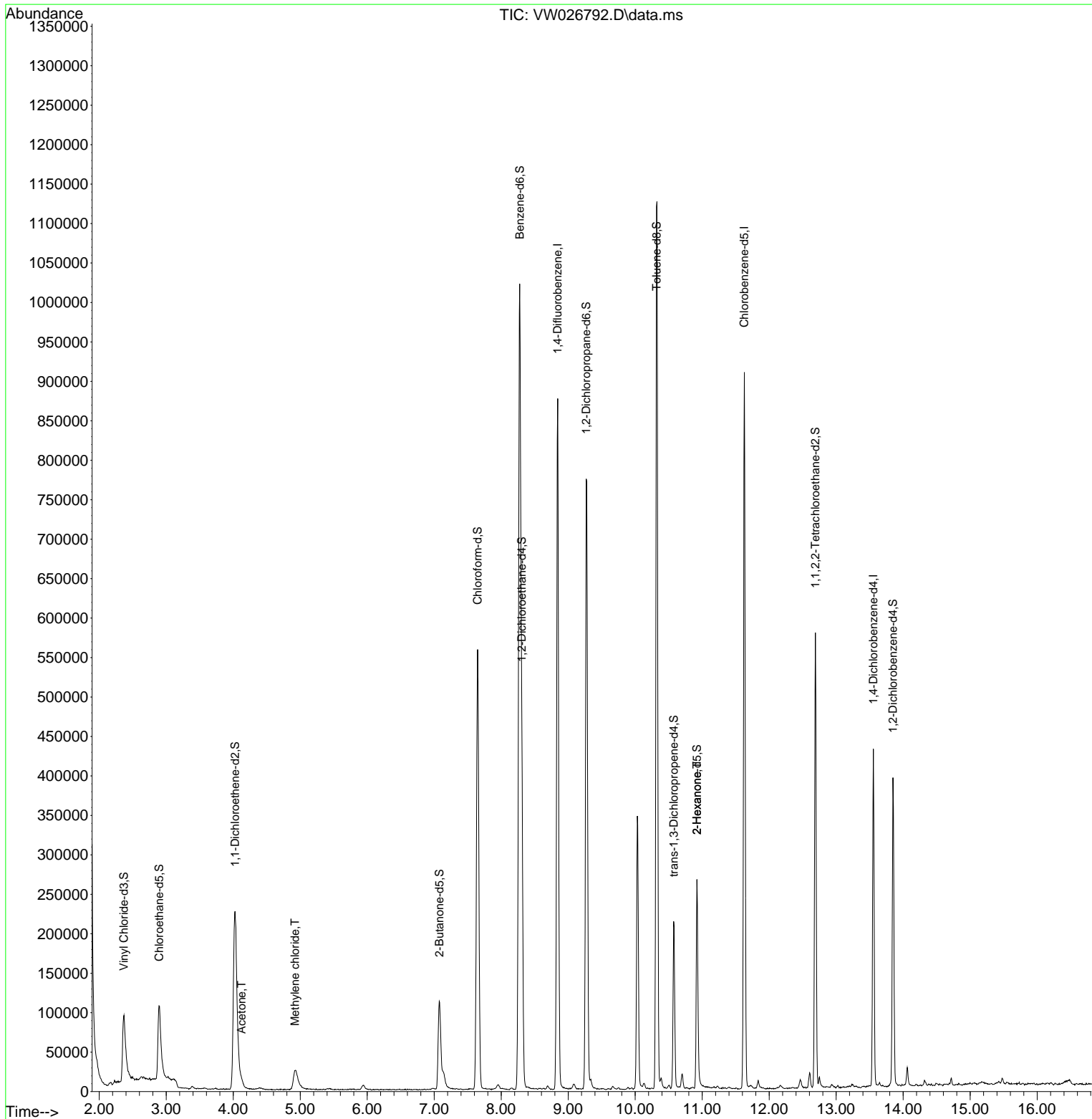
Compound	R.T.	QIon	Response	Conc	Units	Dev(Min)
Internal Standards						
1) 1,4-Difluorobenzene	8.843	114	702421	25.000	ug/L	0.00
28) Chlorobenzene-d5	11.629	117	485582	25.000	ug/L	0.00
58) 1,4-Dichlorobenzene-d4	13.556	152	106206	25.000	ug/L	0.00
System Monitoring Compounds						
4) Vinyl Chloride-d3	2.369	65	192118	16.638	ug/L	0.00
Spiked Amount	25.000	Range 30 - 150	Recovery	=	66.560%	
7) Chloroethane-d5	2.893	69	165562	19.282	ug/L	0.00
Spiked Amount	25.000	Range 30 - 150	Recovery	=	77.120%	
11) 1,1-Dichloroethene-d2	4.027	65	104782	18.450	ug/L	0.00
Spiked Amount	25.000	Range 45 - 110	Recovery	=	73.800%	
21) 2-Butanone-d5	7.075	46	198092	59.687	ug/L	0.00
Spiked Amount	50.000	Range 20 - 135	Recovery	=	119.380%	
24) Chloroform-d	7.648	84	571010	24.221	ug/L	0.00
Spiked Amount	25.000	Range 40 - 150	Recovery	=	96.880%	
26) 1,2-Dichloroethane-d4	8.307	65	323770	24.886	ug/L	0.00
Spiked Amount	25.000	Range 70 - 130	Recovery	=	99.560%	
32) Benzene-d6	8.276	84	1038764	31.039	ug/L	0.00
Spiked Amount	25.000	Range 20 - 135	Recovery	=	124.160%	
36) 1,2-Dichloropropane-d6	9.270	67	382843	36.726	ug/L	0.00
Spiked Amount	25.000	Range 70 - 120	Recovery	=	146.920%#	
41) Toluene-d8	10.318	98	756994	26.351	ug/L	0.00
Spiked Amount	25.000	Range 30 - 130	Recovery	=	105.400%	
43) trans-1,3-Dichloroprop...	10.575	79	119055	27.661	ug/L	0.00
Spiked Amount	25.000	Range 30 - 135	Recovery	=	110.640%	
47) 2-Hexanone-d5	10.922	63	88824	81.091	ug/L	0.00
Spiked Amount	50.000	Range 20 - 135	Recovery	=	162.180%#	
56) 1,1,2,2-Tetrachloroeth...	12.690	84	296699	36.040	ug/L	0.00
Spiked Amount	25.000	Range 45 - 120	Recovery	=	144.160%#	
66) 1,2-Dichlorobenzene-d4	13.848	152	98915	26.021	ug/L	0.00
Spiked Amount	25.000	Range 75 - 120	Recovery	=	104.080%	
Target Compounds						
13) Acetone	4.124	43	9494	2.877	ug/L	98
16) Methylene chloride	4.923	84	23974	1.764	ug/L	94
48) 2-Hexanone	10.922	43	13446	3.136	ug/L #	68

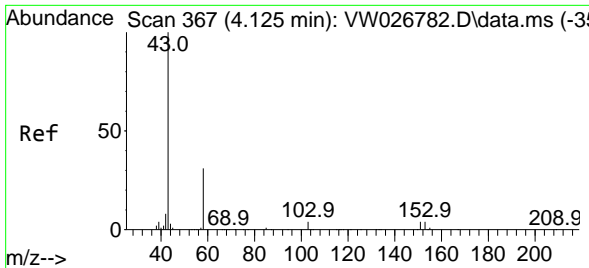
(#) = qualifier out of range (m) = manual integration (+) = signals summed

Data Path : Z:\voasrv\HPCHEM1\MSVOA\_W\Data\VW082123\  
 Data File : VW026792.D  
 Acq On : 21 Aug 2023 15:28  
 Operator : SY/MD  
 Sample : 04037-17  
 Misc : 5.46g/10mL/MSVOA\_W/SOIL  
 ALS Vial : 1 Sample Multiplier: 1

Instrument :  
 MSVOA\_W  
 ClientSampleId :

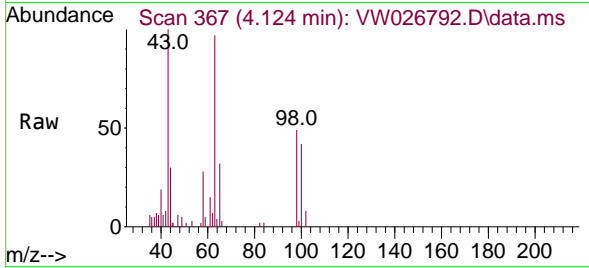
Quant Time: Aug 22 01:34:06 2023  
 Quant Method : Z:\voasrv\HPCHEM1\MSVOA\_W\Method\SFAMWLM081023SMA.M  
 Quant Title : SFAM01.0  
 QLast Update : Tue Aug 22 01:31:05 2023  
 Response via : Initial Calibration



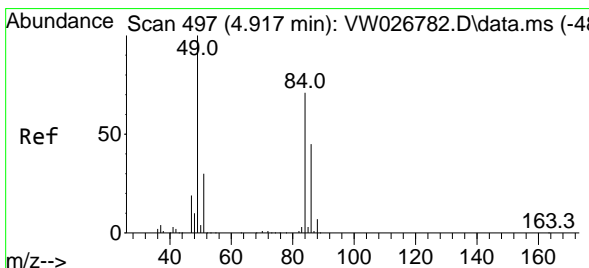
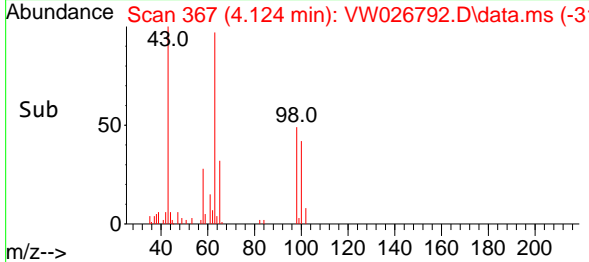
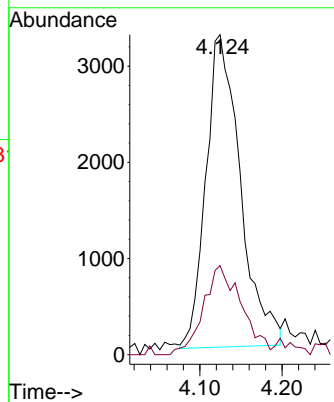


#13  
 Acetone  
 Concen: 2.877 ug/L  
 RT: 4.124 min Scan# 30  
 Delta R.T. -0.000 min  
 Lab File: VW026792.D  
 Acq: 21 Aug 2023 15:28

Instrument :  
 MSVOA\_W  
 ClientSampleId :

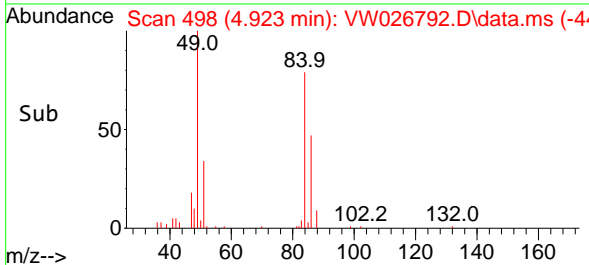
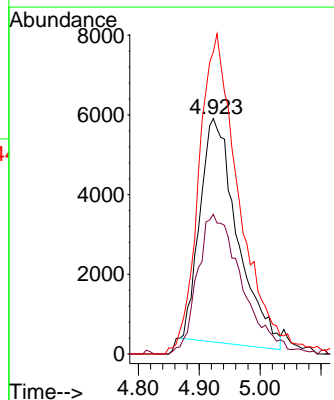
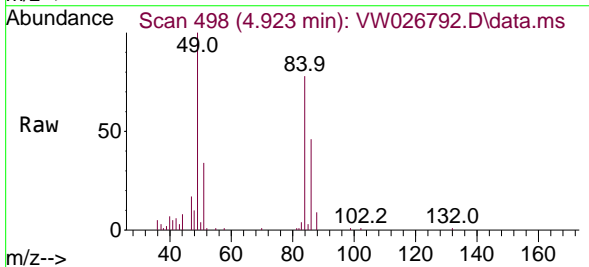


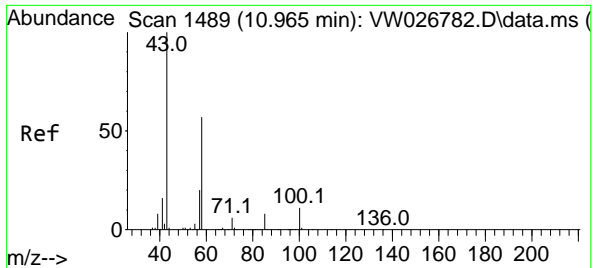
Tgt Ion: 43 Resp: 9494  
 Ion Ratio Lower Upper  
 43 100  
 58 29.8 0.0 57.4



#16  
 Methylene chloride  
 Concen: 1.764 ug/L  
 RT: 4.923 min Scan# 498  
 Delta R.T. 0.006 min  
 Lab File: VW026792.D  
 Acq: 21 Aug 2023 15:28

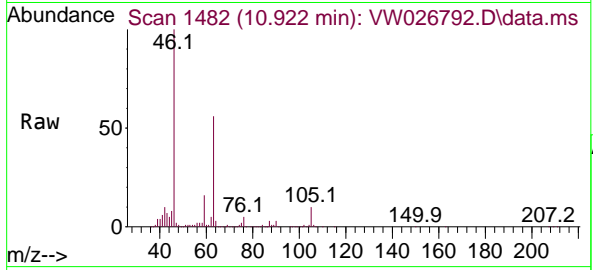
Tgt Ion: 84 Resp: 23974  
 Ion Ratio Lower Upper  
 84 100  
 86 59.4 43.5 80.9  
 49 128.4 96.0 178.2





#48  
 2-Hexanone  
 Concen: 3.136 ug/L  
 RT: 10.922 min Scan# 14  
 Delta R.T. -0.043 min  
 Lab File: VW026792.D  
 Acq: 21 Aug 2023 15:28

Instrument : MSVOA\_W  
 ClientSampleId :



Tgt Ion: 43 Resp: 13446

Ion	Ratio	Lower	Upper
43	100		
58	25.4	41.1	61.7#
57	28.3	14.3	21.5#
100	2.5	8.8	13.2#

