

Data Path : Z:\voasrv\HPCHEM1\MSVOA\_W\Data\VW082225\  
 Data File : VW032119.D  
 Acq On : 22 Aug 2025 18:18  
 Operator : SY/MD  
 Sample : Q2947-01  
 Misc : 5.13g/5mL/MSVOA\_W/SOIL/A  
 ALS Vial : 18 Sample Multiplier: 1

Instrument :  
 MSVOA\_W  
 ClientSampleId :  
 291

Integration Parameters: RTEINT.P

Integrator: RTE  
 Smoothing : ON Filtering: 5  
 Sampling : 1 Min Area: 3 % of largest Peak  
 Start Thrs: 0.2 Max Peaks: 100  
 Stop Thrs : 0 Peak Location: TOP

If leading or trailing edge < 100 prefer < Baseline drop else tangent >  
 Peak separation: 5

Method : Z:\voasrv\HPCHEM1\MSVOA\_W\Method\82W081125S.M  
 Title : SW846 8260

Signal : TIC: VW032119.D\data.ms

peak #	R.T. min	first scan	max scan	last scan	PK TY	peak height	corr. area	corr. % max.	% of total
1	4.954	490	503	518	rBV7	5619	24991	2.40%	0.411%
2	5.972	660	670	683	rVB6	6048	19207	1.84%	0.316%
3	7.898	977	986	991	rBV	151770	362951	34.82%	5.963%
4	7.959	991	996	1007	rVB	236521	539891	51.79%	8.870%
5	8.319	1046	1055	1065	rBV	151466	332785	31.92%	5.468%
6	8.849	1132	1142	1164	rBV	389158	795772	76.33%	13.075%
7	10.325	1376	1384	1393	rBV	582095	1042485	100.00%	17.128%
8	11.629	1591	1598	1609	rBV	594139	1029213	98.73%	16.910%
9	12.617	1753	1760	1770	rBV2	458496	742138	71.19%	12.193%
10	13.026	1820	1827	1828	rBV7	11627	23610	2.26%	0.388%
11	13.294	1863	1871	1875	rBV7	7665	18950	1.82%	0.311%
12	13.556	1907	1914	1923	rBV	633155	1039197	99.68%	17.074%
13	13.867	1960	1965	1968	rBV7	6538	12044	1.16%	0.198%
14	14.062	1993	1997	2004	rVB2	11903	23759	2.28%	0.390%
15	15.202	2178	2184	2196	rVB2	24532	62430	5.99%	1.026%
16	15.476	2226	2229	2234	rVB	10096	16989	1.63%	0.279%

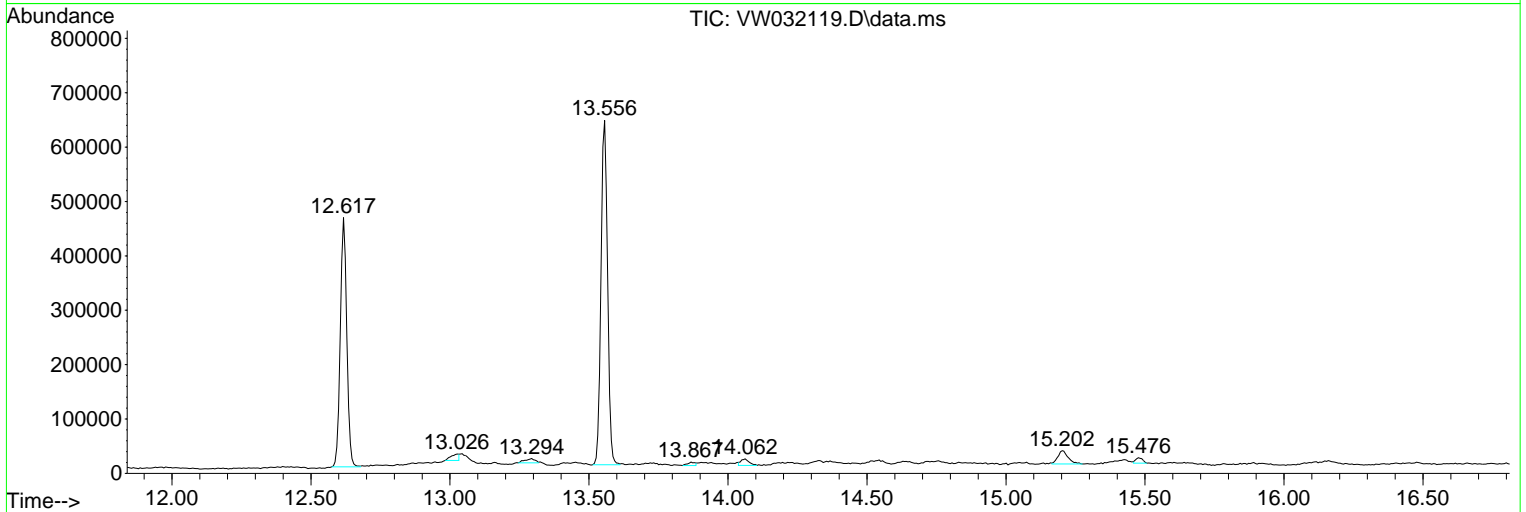
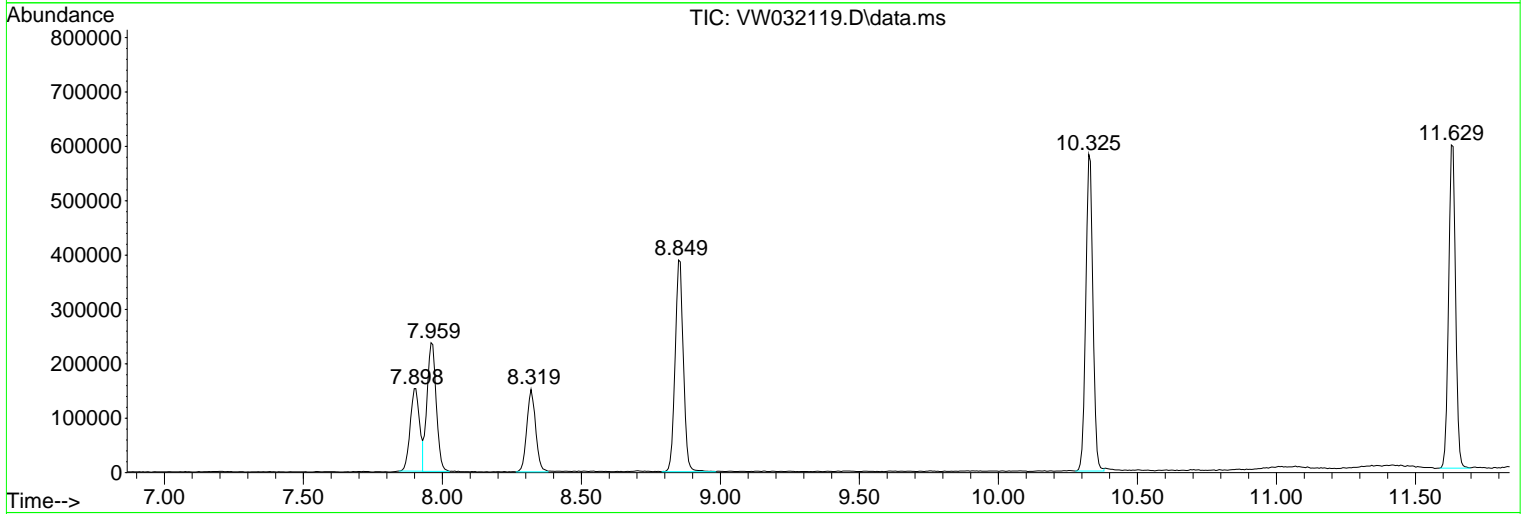
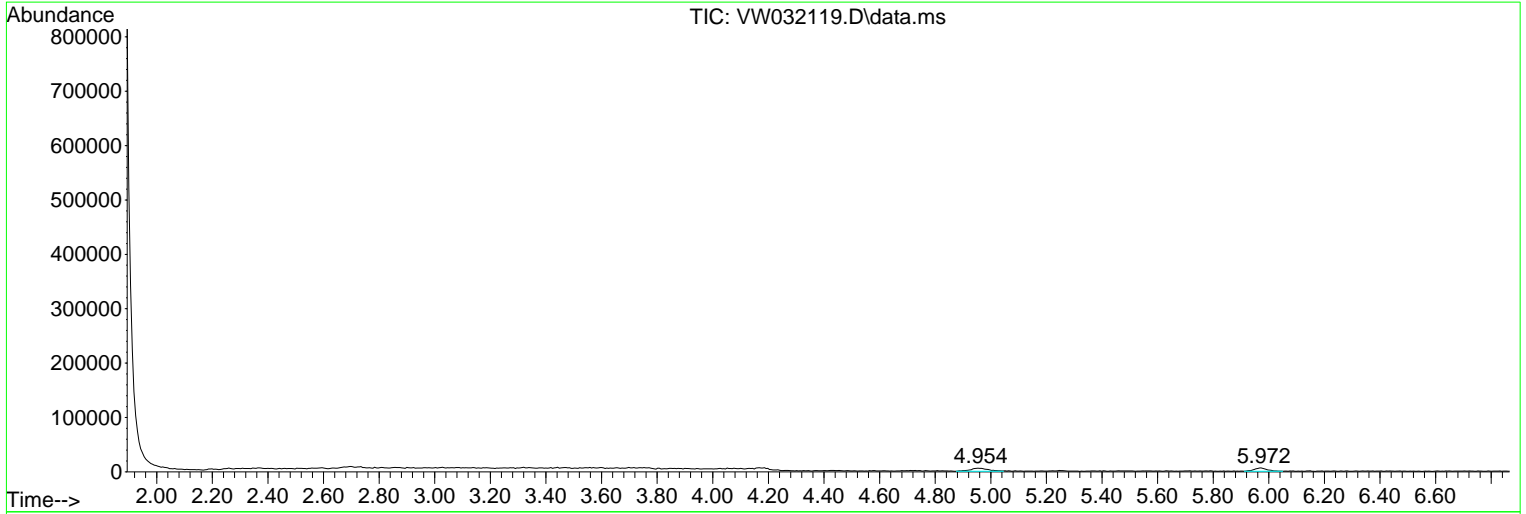
Sum of corrected areas: 6086412

Data Path : Z:\voasrv\HPCHEM1\MSVOA\_W\Data\VW082225\  
 Data File : VW032119.D  
 Acq On : 22 Aug 2025 18:18  
 Operator : SY/MD  
 Sample : Q2947-01  
 Misc : 5.13g/5mL/MSVOA\_W/SOIL/A  
 ALS Vial : 18 Sample Multiplier: 1

Instrument :  
 MSVOA\_W  
 ClientSampleId :  
 291

Quant Method : Z:\voasrv\HPCHEM1\MSVOA\_W\Method\82W081125S.M  
 Quant Title : SW846 8260

TIC Library : C:\Database\NIST20.L  
 TIC Integration Parameters: LSCINT.P



Library Search Compound Report

Data Path : Z:\voasrv\HPCHEM1\MSVOA\_W\Data\VW082225\  
Data File : VW032119.D  
Acq On : 22 Aug 2025 18:18  
Operator : SY/MD  
Sample : Q2947-01  
Misc : 5.13g/5mL/MSVOA\_W/SOIL/A  
ALS Vial : 18 Sample Multiplier: 1

Instrument :  
MSVOA\_W  
ClientSampleId :  
291

Quant Method : Z:\voasrv\HPCHEM1\MSVOA\_W\Method\82W081125S.M  
Quant Title : SW846 8260

TIC Library : C:\Database\NIST20.L  
TIC Integration Parameters: LSCINT.P

No Library Search Compounds Detected

\*\*\*\*\*

Data Path : Z:\voasrv\HPCHEM1\MSVOA\_W\Data\VW082225\  
Data File : VW032119.D  
Acq On : 22 Aug 2025 18:18  
Operator : SY/MD  
Sample : Q2947-01  
Misc : 5.13g/5mL/MSVOA\_W/SOIL/A  
ALS Vial : 18 Sample Multiplier: 1

Instrument :  
MSVOA\_W  
ClientSampleId :  
291

Quant Method : Z:\voasrv\HPCHEM1\MSVOA\_W\Method\82W081125S.M  
Quant Title : SW846 8260

TIC Library : C:\Database\NIST20.L  
TIC Integration Parameters: LSCINT.P

TIC Top Hit name	RT	EstConc	Units	Response	--Internal Standard--			
					#	RT	Resp	Conc

---