

Data Path : Z:\voasrv\HPCHEM1\MSVOA_W\Data\VW082322\
 Data File : VW024305.D
 Acq On : 23 Aug 2022 16:12
 Operator : SY/VA
 Sample : N4322-06
 Misc : 5.96g/10mL/MSVOA_W/SOIL
 ALS Vial : 1 Sample Multiplier: 1

Instrument :
 MSVOA_W
 ClientSampleId :
 EY166

Quant Time: Aug 24 01:07:45 2022
 Quant Method : Z:\voasrv\HPCHEM1\MSVOA_W\Method\SFAMWLM080422SMA.M
 Quant Title : SFAM01.0
 QLast Update : Wed Aug 24 01:06:02 2022
 Response via : Initial Calibration

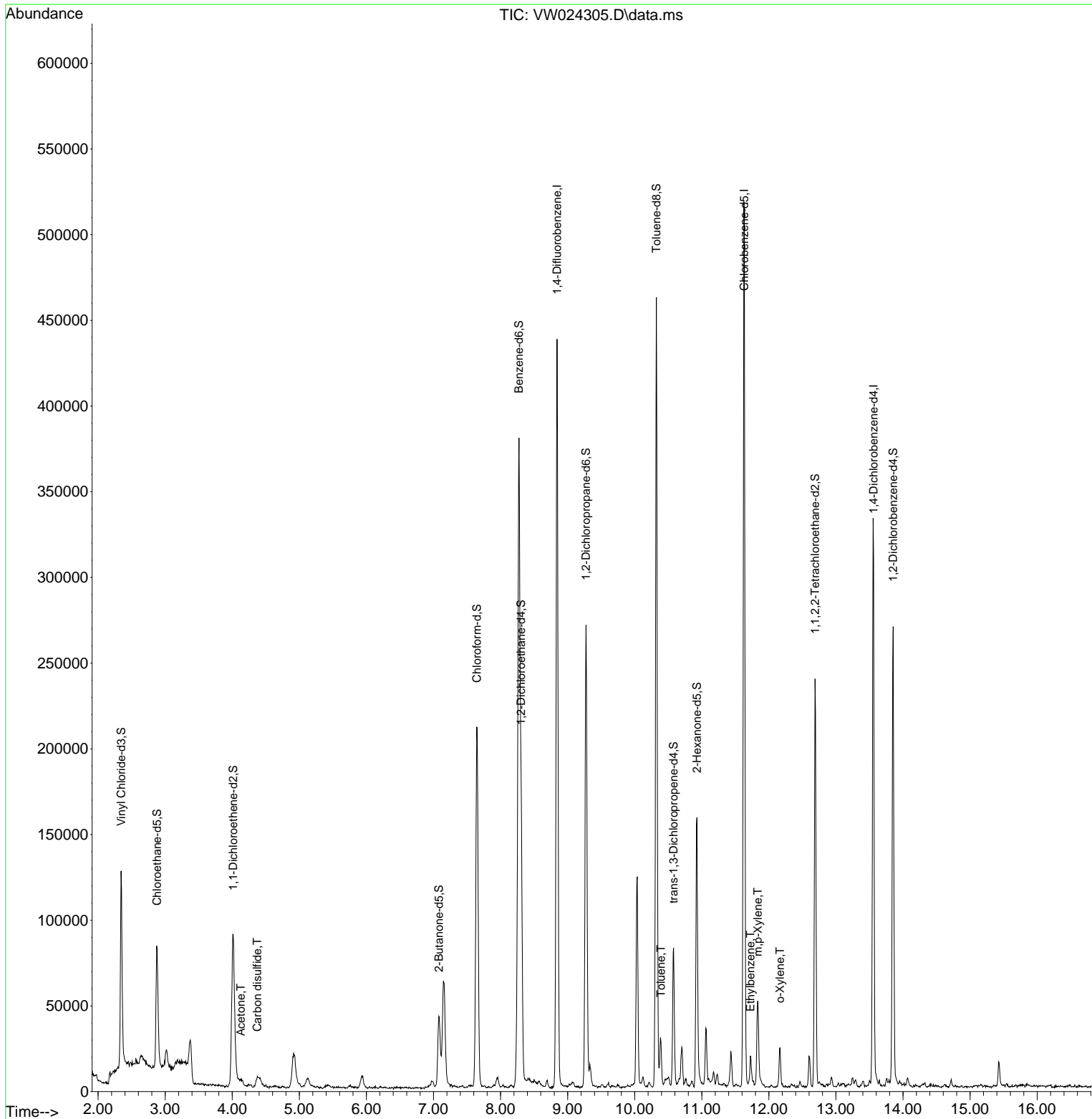
Compound	R.T.	QIon	Response	Conc	Units	Dev(Min)
Internal Standards						
1) 1,4-Difluorobenzene	8.842	114	342399	25.000	ug/L	0.00
28) Chlorobenzene-d5	11.634	117	278298	25.000	ug/L	0.00
58) 1,4-Dichlorobenzene-d4	13.560	152	80908	25.000	ug/L	0.00
System Monitoring Compounds						
4) Vinyl Chloride-d3	2.343	65	115713	16.168	ug/L	0.00
Spiked Amount	25.000	Range 30 - 150	Recovery =	64.680%		
7) Chloroethane-d5	2.879	69	81408	18.260	ug/L	0.00
Spiked Amount	25.000	Range 30 - 150	Recovery =	73.040%		
11) 1,1-Dichloroethene-d2	4.013	63	97290	11.928	ug/L	0.00
Spiked Amount	25.000	Range 45 - 110	Recovery =	47.720%		
21) 2-Butanone-d5	7.080	46	68385	51.359	ug/L	0.00
Spiked Amount	50.000	Range 20 - 135	Recovery =	102.720%		
24) Chloroform-d	7.647	84	206996	19.980	ug/L	0.00
Spiked Amount	25.000	Range 40 - 150	Recovery =	79.920%		
26) 1,2-Dichloroethane-d4	8.305	65	117365	20.405	ug/L	0.00
Spiked Amount	25.000	Range 70 - 130	Recovery =	81.600%		
32) Benzene-d6	8.275	84	350270	21.341	ug/L	0.00
Spiked Amount	25.000	Range 20 - 135	Recovery =	85.360%		
36) 1,2-Dichloropropane-d6	9.274	67	116161	23.971	ug/L	0.00
Spiked Amount	25.000	Range 70 - 120	Recovery =	95.880%		
41) Toluene-d8	10.323	98	286988	18.707	ug/L	0.00
Spiked Amount	25.000	Range 30 - 130	Recovery =	74.840%		
43) trans-1,3-Dichloroprop...	10.579	79	42899	20.211	ug/L	0.00
Spiked Amount	25.000	Range 30 - 135	Recovery =	80.840%		
47) 2-Hexanone-d5	10.927	63	50252	56.142	ug/L	0.00
Spiked Amount	50.000	Range 20 - 135	Recovery =	112.280%		
56) 1,1,2,2-Tetrachloroeth...	12.688	84	109639	23.319	ug/L	0.00
Spiked Amount	25.000	Range 45 - 120	Recovery =	93.280%		
66) 1,2-Dichlorobenzene-d4	13.853	152	66368	22.416	ug/L	0.00
Spiked Amount	25.000	Range 75 - 120	Recovery =	89.680%		
Target Compounds						
13) Acetone	4.129	43	5192	5.296	ug/L	97
14) Carbon disulfide	4.373	76	12132	0.921	ug/L	96
42) Toluene	10.390	91	19271	1.103	ug/L	92
52) Ethylbenzene	11.725	91	9453	0.494	ug/L	96
53) m,p-Xylene	11.835	106	14833	1.991	ug/L	94
54) o-Xylene	12.164	106	5835	0.829	ug/L	88

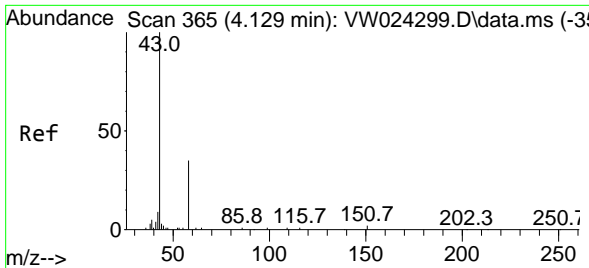
(#) = qualifier out of range (m) = manual integration (+) = signals summed

Data Path : Z:\voasrv\HPCHEM1\MSVOA_W\Data\VW082322\
 Data File : VW024305.D
 Acq On : 23 Aug 2022 16:12
 Operator : SY/VA
 Sample : N4322-06
 Misc : 5.96g/10mL/MSVOA_W/SOIL
 ALS Vial : 1 Sample Multiplier: 1

Instrument :
 MSVOA_W
 ClientSampleId :
 EY166

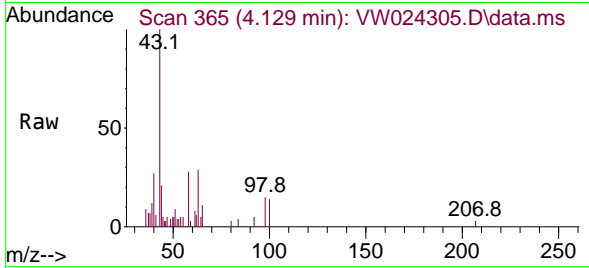
Quant Time: Aug 24 01:07:45 2022
 Quant Method : Z:\voasrv\HPCHEM1\MSVOA_W\Method\SFAMWLM080422SMA.M
 Quant Title : SFAM01.0
 QLast Update : Wed Aug 24 01:06:02 2022
 Response via : Initial Calibration



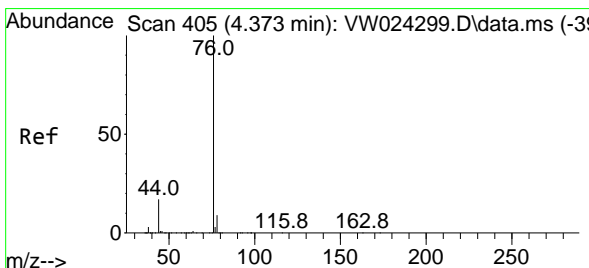
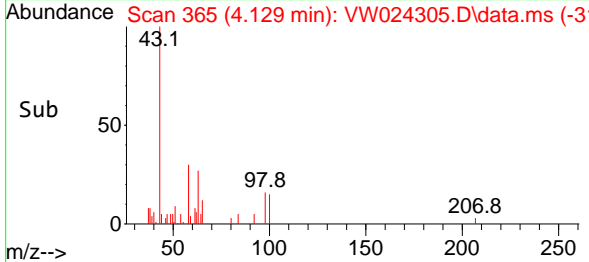
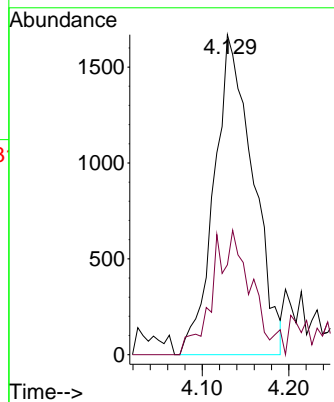


#13
 Acetone
 Concen: 5.296 ug/L
 RT: 4.129 min Scan# 365
 Delta R.T. -0.000 min
 Lab File: VW024305.D
 Acq: 23 Aug 2022 16:12

Instrument : MSVOA_W
 ClientSampleId : EY166

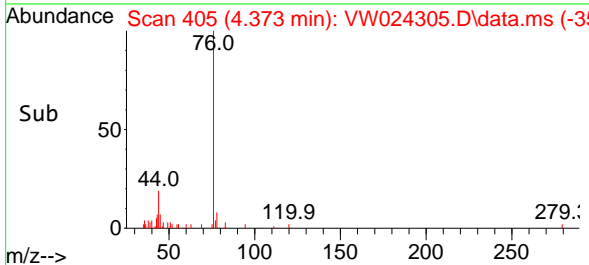
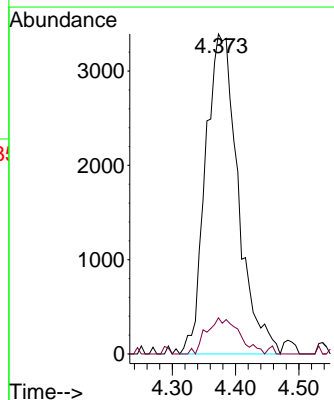
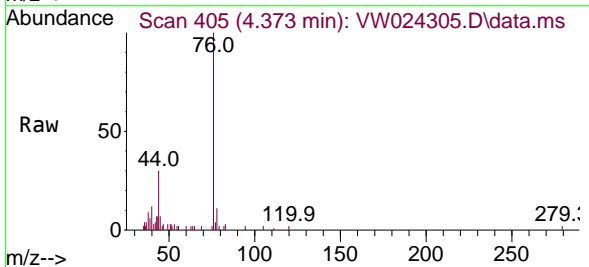


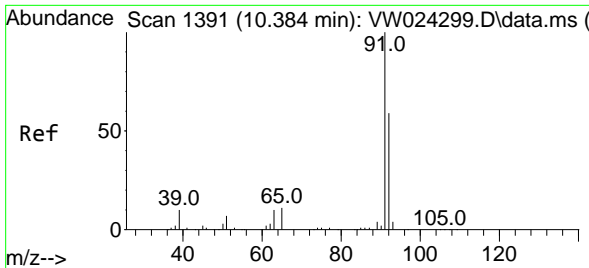
Tgt Ion: 43 Resp: 5192
 Ion Ratio Lower Upper
 43 100
 58 17.1 0.0 31.8



#14
 Carbon disulfide
 Concen: 0.921 ug/L
 RT: 4.373 min Scan# 405
 Delta R.T. -0.000 min
 Lab File: VW024305.D
 Acq: 23 Aug 2022 16:12

Tgt Ion: 76 Resp: 12132
 Ion Ratio Lower Upper
 76 100
 78 11.3 7.9 11.9

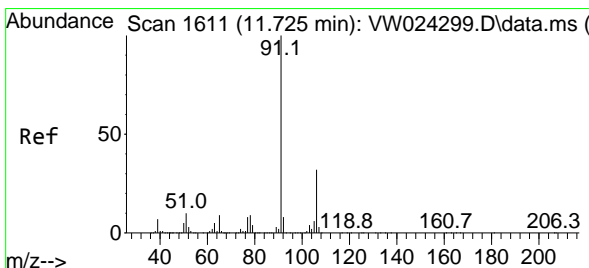
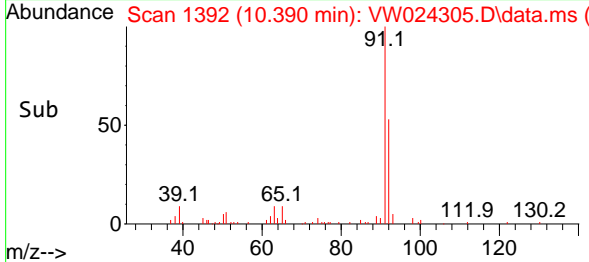
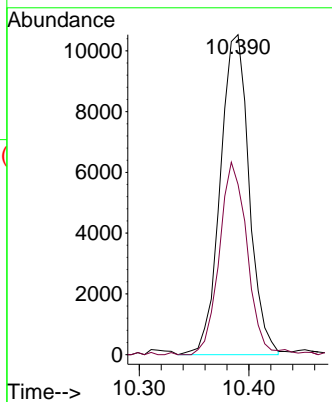
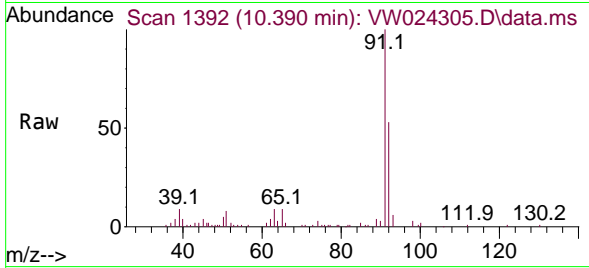




#42
 Toluene
 Concen: 1.103 ug/L
 RT: 10.390 min Scan# 11
 Delta R.T. 0.006 min
 Lab File: VW024305.D
 Acq: 23 Aug 2022 16:12

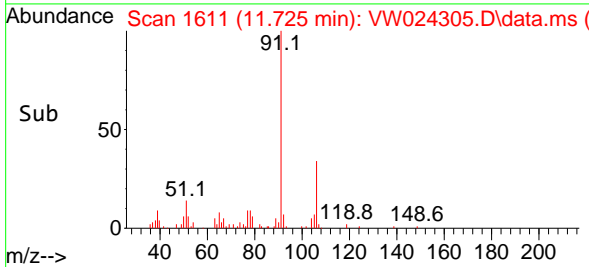
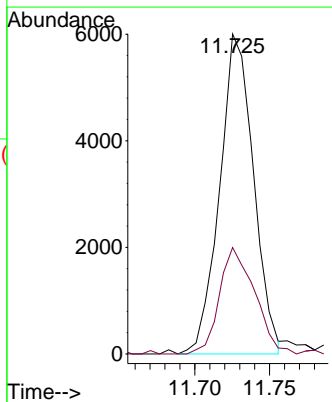
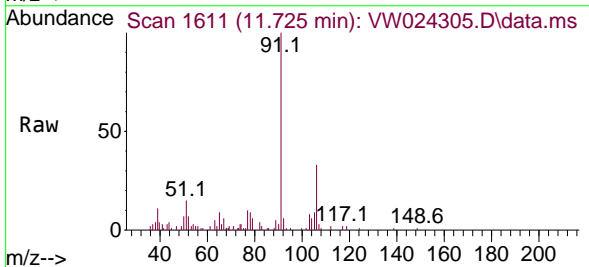
Instrument : MSVOA_W
 ClientSampleId : EY166

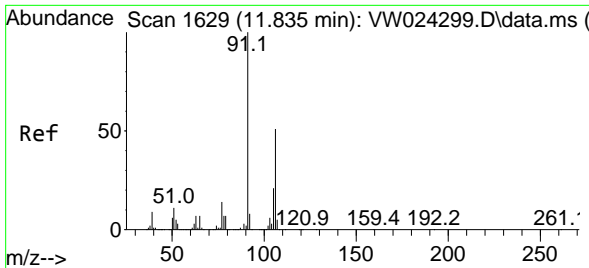
Tgt Ion: 91 Resp: 19271
 Ion Ratio Lower Upper
 91 100
 92 53.2 41.4 77.0



#52
 Ethylbenzene
 Concen: 0.494 ug/L
 RT: 11.725 min Scan# 1611
 Delta R.T. -0.000 min
 Lab File: VW024305.D
 Acq: 23 Aug 2022 16:12

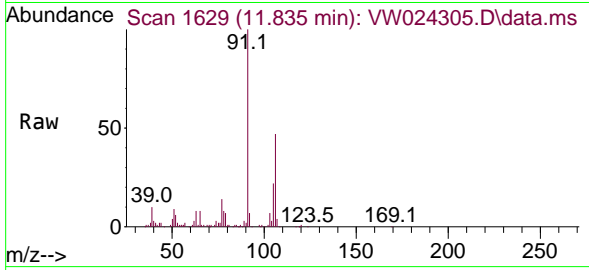
Tgt Ion: 91 Resp: 9453
 Ion Ratio Lower Upper
 91 100
 106 33.2 21.9 40.7



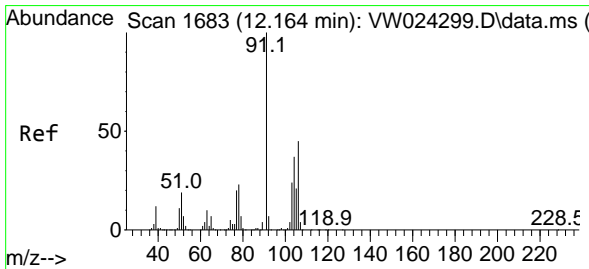
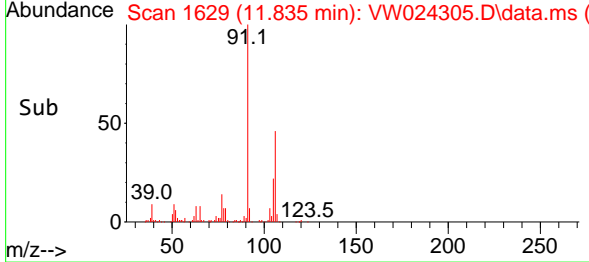
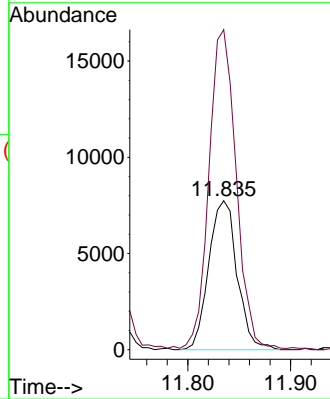


#53
 m,p-Xylene
 Concen: 1.991 ug/L
 RT: 11.835 min Scan# 1629
 Delta R.T. -0.000 min
 Lab File: VW024305.D
 Acq: 23 Aug 2022 16:12

Instrument : MSVOA_W
 ClientSampleId : EY166



Tgt Ion:106 Resp: 14833
 Ion Ratio Lower Upper
 106 100
 91 214.9 144.1 267.7



#54
 o-Xylene
 Concen: 0.829 ug/L
 RT: 12.164 min Scan# 1683
 Delta R.T. -0.000 min
 Lab File: VW024305.D
 Acq: 23 Aug 2022 16:12

Tgt Ion:106 Resp: 5835
 Ion Ratio Lower Upper
 106 100
 91 195.8 150.9 280.3

