

Data Path : Z:\voasrv\HPCHEM1\MSVOA\_W\Data\VW082823\  
 Data File : VW026930.D  
 Acq On : 28 Aug 2023 10:22  
 Operator : SY/MD  
 Sample : 04157-24  
 Misc : 4.74g/10mL/MSVOA\_W/SOIL  
 ALS Vial : 1 Sample Multiplier: 1

Instrument :  
 MSVOA\_W  
 ClientSampleId :  
 DCHW3

Quant Time: Aug 28 14:14:19 2023  
 Quant Method : Z:\voasrv\HPCHEM1\MSVOA\_W\Method\SFAMWLM081023SMA.M  
 Quant Title : SFAM01.0  
 QLast Update : Sat Aug 26 05:14:45 2023  
 Response via : Initial Calibration

Manual Integrations  
 APPROVED

Reviewed By : Semsettin Yesilyurt 08/29/2023  
 Supervised By : Mahesh Dadoda 08/29/2023

Compound	R.T.	QIon	Response	Conc	Units	Dev(Min)
Internal Standards						
1) 1,4-Difluorobenzene	8.843	114	395755	25.000	ug/L	0.00
28) Chlorobenzene-d5	11.629	117	391585	25.000	ug/L	0.00
58) 1,4-Dichlorobenzene-d4	13.556	152	202133	25.000	ug/L	0.00
System Monitoring Compounds						
4) Vinyl Chloride-d3	2.363	65	65744	10.105	ug/L	0.00
Spiked Amount	25.000	Range 30 - 150	Recovery =	40.440%		
7) Chloroethane-d5	2.893	69	61561	12.725	ug/L	0.00
Spiked Amount	25.000	Range 30 - 150	Recovery =	50.920%		
11) 1,1-Dichloroethene-d2	4.021	65	41702	13.033	ug/L	0.00
Spiked Amount	25.000	Range 45 - 110	Recovery =	52.120%		
21) 2-Butanone-d5	7.075	46	100010	53.485	ug/L	0.00
Spiked Amount	50.000	Range 20 - 135	Recovery =	106.960%		
24) Chloroform-d	7.648	84	243816	18.356	ug/L	0.00
Spiked Amount	25.000	Range 40 - 150	Recovery =	73.440%		
26) 1,2-Dichloroethane-d4	8.307	65	163875	22.357	ug/L	0.00
Spiked Amount	25.000	Range 70 - 130	Recovery =	89.440%		
32) Benzene-d6	8.276	84	420368	15.576	ug/L	0.00
Spiked Amount	25.000	Range 20 - 135	Recovery =	62.320%		
36) 1,2-Dichloropropane-d6	9.270	67	148721	17.691	ug/L	0.00
Spiked Amount	25.000	Range 70 - 120	Recovery =	70.760%		
41) Toluene-d8	10.325	98	357092	15.414	ug/L	0.00
Spiked Amount	25.000	Range 30 - 130	Recovery =	61.640%		
43) trans-1,3-Dichloroprop...	10.575	79	63774	18.374	ug/L	0.00
Spiked Amount	25.000	Range 30 - 135	Recovery =	73.480%		
47) 2-Hexanone-d5	10.922	63	44839	50.762	ug/L	0.00
Spiked Amount	50.000	Range 20 - 135	Recovery =	101.520%		
56) 1,1,2,2-Tetrachloroeth...	12.690	84	148244	22.330	ug/L	0.00
Spiked Amount	25.000	Range 45 - 120	Recovery =	89.320%		
66) 1,2-Dichlorobenzene-d4	13.848	152	135202	18.688	ug/L	0.00
Spiked Amount	25.000	Range 75 - 120	Recovery =	74.760%#		
Target Compounds						
16) Methylene chloride	4.917	84	14963m	1.955	ug/L	Qvalue

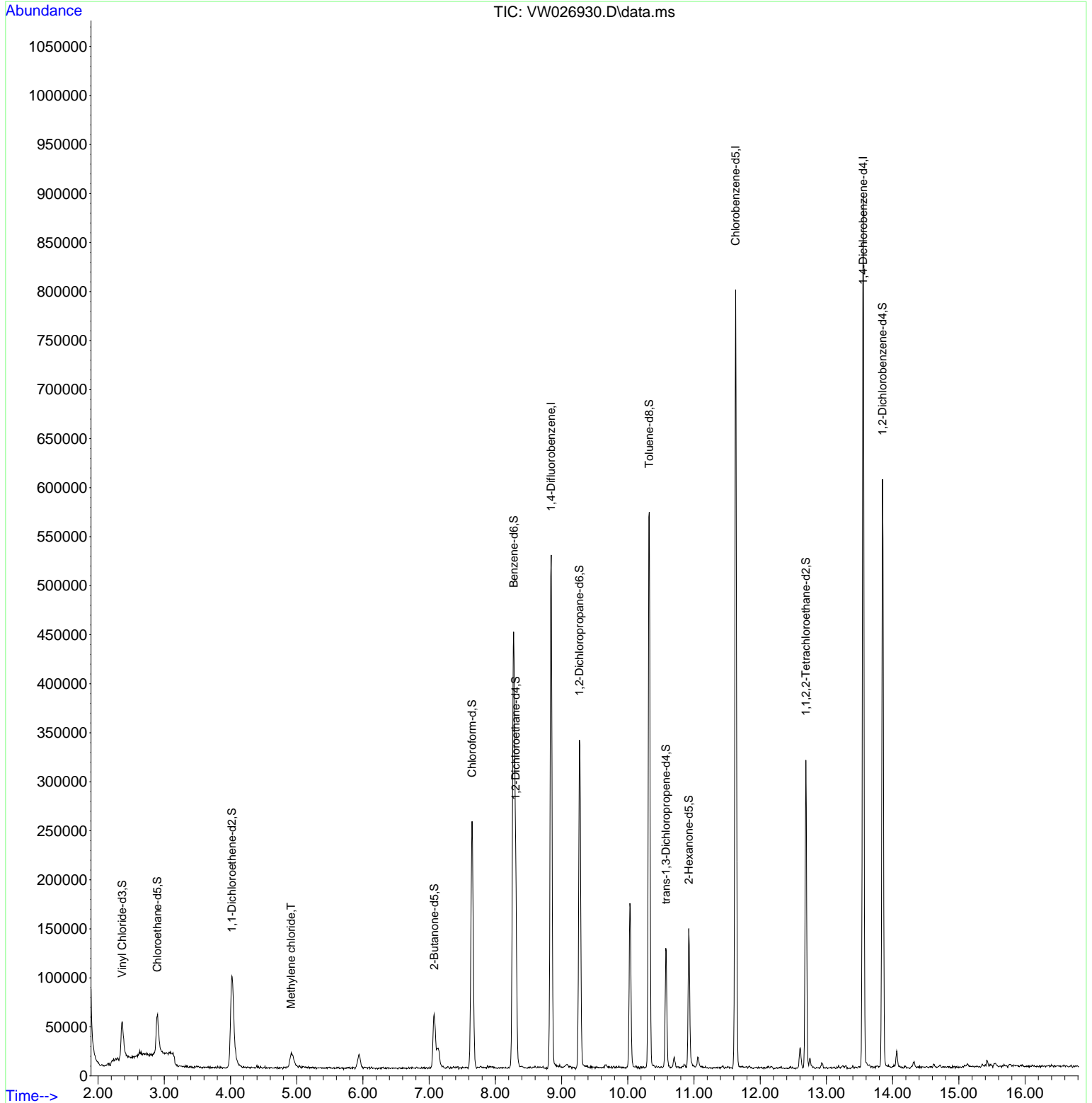
(#) = qualifier out of range (m) = manual integration (+) = signals summed

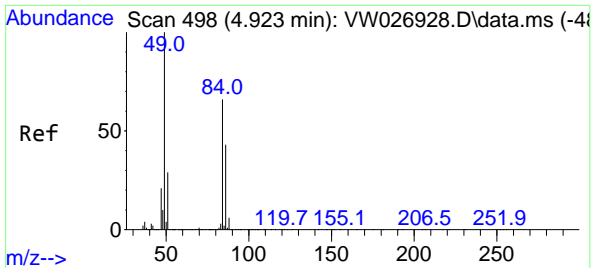
Data Path : Z:\voasrv\HPCHEM1\MSVOA\_W\Data\VW082823\  
 Data File : VW026930.D  
 Acq On : 28 Aug 2023 10:22  
 Operator : SY/MD  
 Sample : 04157-24  
 Misc : 4.74g/10mL/MSVOA\_W/SOIL  
 ALS Vial : 1 Sample Multiplier: 1

**Instrument :**  
 MSVOA\_W  
**ClientSampleId :**  
 DCHW3

Quant Time: Aug 28 14:14:19 2023  
 Quant Method : Z:\voasrv\HPCHEM1\MSVOA\_W\Method\SFAMWLM081023SMA.M  
 Quant Title : SFAM01.0  
 QLast Update : Sat Aug 26 05:14:45 2023  
 Response via : Initial Calibration

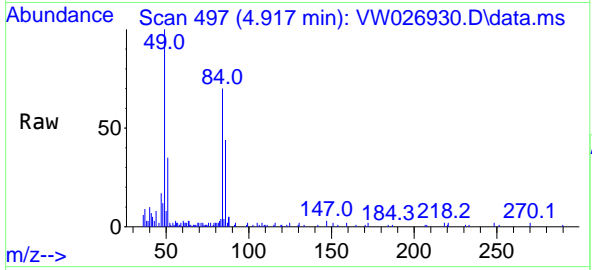
**Manual Integrations**  
**APPROVED**  
 Reviewed By :Semsettin Yesilyurt 08/29/2023  
 Supervised By :Mahesh Dadoda 08/29/2023





#16  
 Methylene chloride  
 Concen: 1.955 ug/L m  
 RT: 4.917 min Scan# 49  
 Delta R.T. -0.006 min  
 Lab File: VW026930.D  
 Acq: 28 Aug 2023 10:22

Instrument :  
 MSVOA\_W  
 ClientSampleId :  
 DCHW3



Tgt Ion: 84 Resp: 1496

Ion	Ratio	Lower	Upper
84	100		
86	62.1	43.5	80.9
49	142.4	96.0	178.2

Manual Integrations  
**APPROVED**  
 Reviewed By :Semsettin Yesilyurt 08/29/2023  
 Supervised By :Mahesh Dadoda 08/29/2023

