

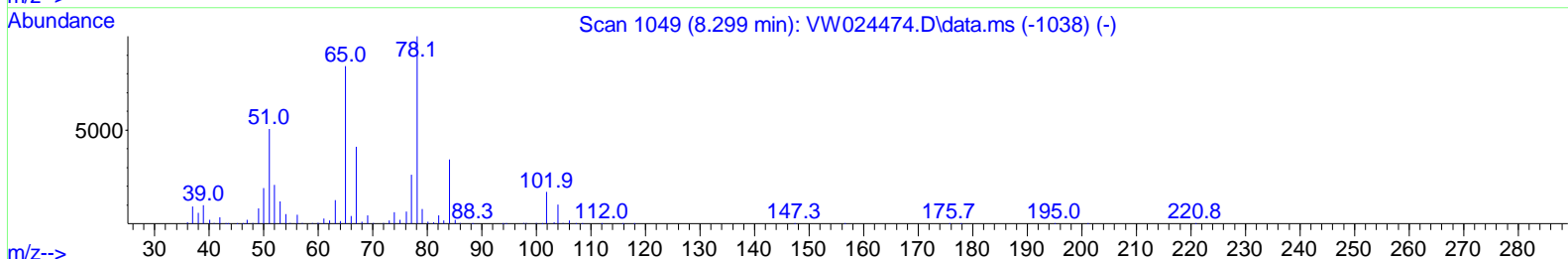
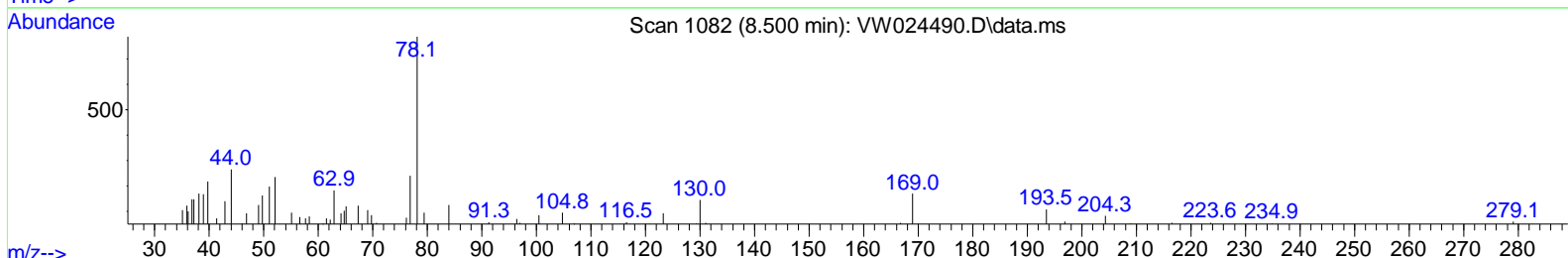
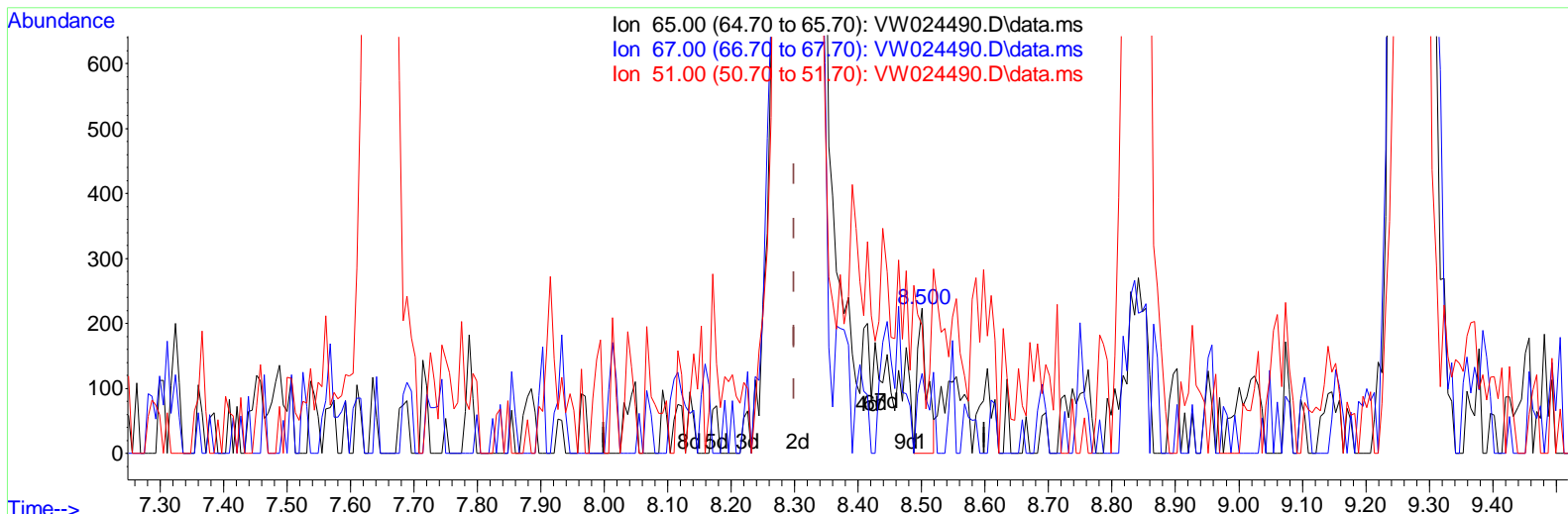
Data Path : Z:\voasrv\HPCHEM1\MSVOA_W\Data\VW082922\
 Data File : VW024490.D
 Acq On : 30 Aug 2022 12:31
 Operator : SY/VA
 Sample : N4365-11
 Mi sc : 5.53g/10mL/MSVOA_W/SOIL
 ALS Vial : 1 Sample Multiplier: 1

Instrument :
 MSVOA_W
 ClientSampleId :
 DBVY9

Manual Integrations APPROVED

Reviewed By : Semsettin Yesilyurt 08/31/2022
 Supervised By : Mahesh Dadoda 08/31/2022

Quant Time: Aug 31 01:20:32 2022
 Quant Method : Z:\voasrv\HPCHEM1\MSVOA_W\Method\SFAMLM082622SMA.M
 Quant Title : SFAM01.0
 QLast Update : Tue Aug 30 07:05:43 2022
 Response via : Initial Calibration



TIC: VW024490.D\data.ms

(26) 1,2-Dichloroethane-d4 (S)

8.500min (+ 0.201) 0.05 ug/L

response 230

Ion	Exp%	Act%
65.00	100.00	100.00
67.00	51.10	57.83
51.00	96.50	74.35
0.00	0.00	0.00

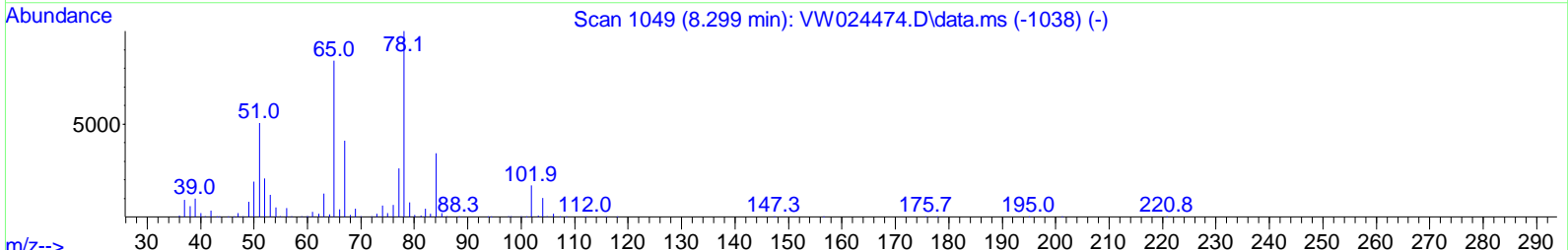
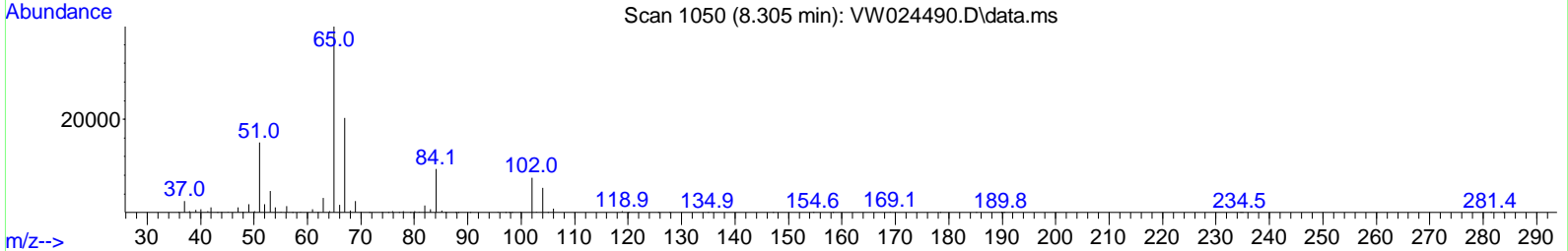
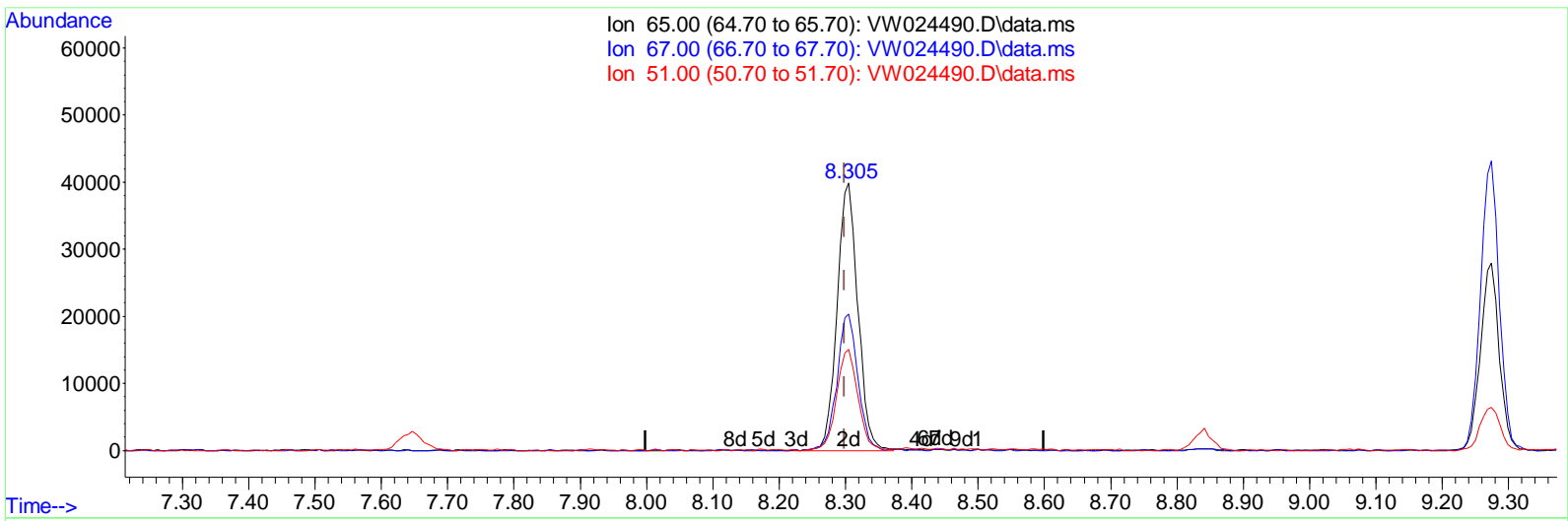
Data Path : Z:\voasrv\HPCHEM1\MSVOA_W\Data\VW082922\
 Data File : VW024490.D
 Acq On : 30 Aug 2022 12:31
 Operator : SY/VA
 Sample : N4365-11
 Mi sc : 5.53g/10mL/MSVOA_W/SOIL
 ALS Vial : 1 Sample Multiplier: 1

Instrument :
 MSVOA_W
ClientSampleId :
 DBVY9

Manual Integrations APPROVED

Reviewed By : Semsettin Yesilyurt 08/31/2022
 Supervised By : Mahesh Dadoda 08/31/2022

Quant Time: Aug 31 01:20:32 2022
 Quant Method : Z:\voasrv\HPCHEM1\MSVOA_W\Method\SFAMLM082622SMA.M
 Quant Title : SFAM01.0
 QLast Update : Tue Aug 30 07:05:43 2022
 Response via : Initial Calibration



TIC: VW024490.D\data.ms

(26) 1,2-Dichloroethane-d4 (S)

8.305min (+ 0.006) 17.19 ug/L m

response 86343

Ion	Exp%	Act%
65.00	100.00	100.00
67.00	51.10	0.15#
51.00	96.50	0.20#
0.00	0.00	0.00

Data Path : Z:\voasrv\HPCHEM1\MSVOA_W\Data\W082922\
 Data File : W024490.D
 Acq On : 30 Aug 2022 12:31
 Operator : SY/VA
 Sample : N4365-11
 Mi sc : 5.53g/10mL/MSVOA_W/SOIL
 ALS Vial : 1 Sample Multiplier: 1

Instrument :
 MSVOA_W
ClientSampleId :
 DBVY9

Manual Integrations APPROVED

Reviewed By : Semsettin Yesilyurt 08/31/2022
 Supervised By : Mahesh Dadoda 08/31/2022

Quant Time: Aug 31 01:20:32 2022
 Quant Method : Z:\voasrv\HPCHEM1\MSVOA_W\Method\SFAMLM082622SMA.M
 Quant Title : SFAM01.0
 QLast Update : Tue Aug 30 07:05:43 2022
 Response via : Initial Calibration

Compound	R.T.	QI on	Response	Conc	Units	Dev(Min)
Internal Standards						
1) 1,4-Difluorobenzene	8.841	114	257690	25.000	ug/L	0.00
28) Chlorobenzene-d5	11.628	117	252386	25.000	ug/L	0.00
58) 1,4-Dichlorobenzene-d4	13.554	152	112502	25.000	ug/L	0.00
System Monitoring Compounds						
4) Vinyl Chloride-d3	2.337	65	132615	18.669	ug/L	0.00
Spike Amount	25.000	Range 30 - 150	Recovery =	74.680%		
7) Chloroethane-d5	2.873	69	79853	15.004	ug/L	0.00
Spike Amount	25.000	Range 30 - 150	Recovery =	60.000%		
11) 1,1-Dichloroethene-d2	4.001	63	96565	15.674	ug/L	-0.01
Spike Amount	25.000	Range 45 - 110	Recovery =	62.680%		
21) 2-Butanone-d5	7.086	46	38513	29.436	ug/L	0.01
Spike Amount	50.000	Range 20 - 135	Recovery =	58.880%		
24) Chloroform-d	7.647	84	149472	18.042	ug/L	0.00
Spike Amount	25.000	Range 40 - 150	Recovery =	72.160%		
26) 1,2-Dichloroethane-d4	8.305	65	86343m	17.186	ug/L	0.00
Spike Amount	25.000	Range 70 - 130	Recovery =	68.760%#		
32) Benzene-d6	8.268	84	280148	19.373	ug/L	0.00
Spike Amount	25.000	Range 20 - 135	Recovery =	77.480%		
36) 1,2-Dichloropropane-d6	9.274	67	85242	18.955	ug/L	0.00
Spike Amount	25.000	Range 70 - 120	Recovery =	75.800%		
41) Toluene-d8	10.323	98	261260	19.002	ug/L	0.00
Spike Amount	25.000	Range 30 - 130	Recovery =	76.000%		
43) trans-1,3-Dichloroprop...	10.579	79	33668	15.998	ug/L	0.00
Spike Amount	25.000	Range 30 - 135	Recovery =	64.000%		
47) 2-Hexanone-d5	10.927	63	30005	29.815	ug/L	0.00
Spike Amount	50.000	Range 20 - 135	Recovery =	59.620%		
56) 1,1,2,2-Tetrachloroeth...	12.688	84	75639	14.856	ug/L	0.00
Spike Amount	25.000	Range 45 - 120	Recovery =	59.440%		
66) 1,2-Dichlorobenzene-d4	13.853	152	82966	19.583	ug/L	0.00
Spike Amount	25.000	Range 75 - 120	Recovery =	78.320%		
Target Compounds						
46) Tetrachloroethene	10.859	164	2523	0.784	ug/L	90

(#) = qualifier out of range (m) = manual integration (+) = signals summed

Data Path : Z:\voasrv\HPCHEM1\MSVOA_W\Data\VW082922\
 Data File : VW024490.D
 Acq On : 30 Aug 2022 12: 31
 Operator : SY/VA
 Sample : N4365-11
 Mi sc : 5.53g/10mL/MSVOA_W/SOIL
 ALS Vial : 1 Sample Multiplier: 1

Instrument :
 MSVOA_W
ClientSampleId :
 DBVY9

Manual IntegrationsAPPROVED

Reviewed By :Semsettin Yesilyurt 08/31/2022
 Supervised By :Mahesh Dadoda 08/31/2022

Quant Time: Aug 31 01:20:32 2022
 Quant Method : Z:\voasrv\HPCHEM1\MSVOA_W\Method\SFAMLM082622SMA.M
 Quant Title : SFAM01.0
 QLast Update : Tue Aug 30 07:05:43 2022
 Response via : Initial Calibration

