

Data Path : Z:\voasrv\HPCHEM1\MSVOA_W\Data\VW082922\
 Data File : VW024469.D
 Acq On : 30 Aug 2022 01:02
 Operator : SY/VA
 Sample : N4345-08
 Misc : 5.28g/10mL/MSVOA_W/SOIL
 ALS Vial : 1 Sample Multiplier: 1

Instrument :
 MSVOA_W
 ClientSampleId :
 DBVS8

Integration Parameters: LSCINT.P

Integrator: RTE
 Smoothing : OFF
 Sampling : 1
 Start Thrs : 0.2
 Stop Thrs : 0

Filtering: 5
 Min Area: 0 % of largest Peak
 Max Peaks: 100
 Peak Location: TOP

If leading or trailing edge < 100 prefer < Baseline drop else tangent >
 Peak separation: 5

Method : Z:\voasrv\HPCHEM1\MSVOA_W\Method\SFAMWLM082622SMA.M
 Title : SFAM01.0

Signal : TIC: VW024469.D\data.ms

peak #	R.T. min	first scan	max scan	last scan	PK TY	peak height	corr. area	corr. % max.	% of total
1	2.337	67	71	81	rVB	172302	278669	6.60%	2.102%
2	2.873	154	159	171	rVB	94813	193164	4.58%	1.457%
3	3.477	254	258	259	rBV4	2226	2400	0.06%	0.018%
4	3.556	269	271	273	rBV3	1745	1320	0.03%	0.010%
5	3.672	286	290	292	rBV5	1326	2222	0.05%	0.017%
6	4.007	335	345	356	rBV	126356	371490	8.80%	2.802%
7	4.251	383	385	389	rVB4	1543	1971	0.05%	0.015%
8	4.342	398	400	401	rBV2	1561	1285	0.03%	0.010%
9	4.550	432	434	437	rVB3	1980	1878	0.04%	0.014%
10	4.666	451	453	454	rBV2	1895	1344	0.03%	0.010%
11	4.708	457	460	464	rBV6	944	1530	0.04%	0.012%
12	4.745	464	466	468	rBV3	957	1202	0.03%	0.009%
13	4.818	476	478	479	rVB2	1416	934	0.02%	0.007%
14	4.842	479	482	483	rBV3	1194	1348	0.03%	0.010%
15	4.909	483	493	503	rVV2	28117	95098	2.25%	0.717%
16	5.025	511	512	515	rBV3	1384	1386	0.03%	0.010%
17	5.257	547	550	551	rBV3	1342	1589	0.04%	0.012%
18	5.428	572	578	581	rBV7	1681	4053	0.10%	0.031%
19	5.531	593	595	596	rBV2	1578	1402	0.03%	0.011%
20	5.611	605	608	610	rVV3	1187	1219	0.03%	0.009%
21	5.629	610	611	614	rVV3	1173	1168	0.03%	0.009%
22	5.781	634	636	638	rVB3	1320	1095	0.03%	0.008%
23	5.812	638	641	643	rVB4	1321	1156	0.03%	0.009%
24	6.117	688	691	693	rBV4	2375	2411	0.06%	0.018%
25	6.165	696	699	700	rVB3	1290	1175	0.03%	0.009%
26	6.190	700	703	705	rBV4	1125	1740	0.04%	0.013%
27	6.263	713	715	716	rBV2	1341	1000	0.02%	0.008%
28	6.446	743	745	747	rVB3	1793	1069	0.03%	0.008%
29	6.470	747	749	753	rBV5	1150	1514	0.04%	0.011%
30	6.891	817	818	821	rBV3	1012	1040	0.02%	0.008%
31	7.080	839	849	854	rBV2	33058	92793	2.20%	0.700%
32	7.324	887	889	892	rVB4	1612	1327	0.03%	0.010%
33	7.537	922	924	926	rBV3	1277	1317	0.03%	0.010%
34	7.647	933	942	953	rVV	202905	495199	11.73%	3.735%
35	7.726	953	955	957	rVV3	1555	1086	0.03%	0.008%
36	7.750	957	959	961	rVB3	1351	903	0.02%	0.007%

Data Path : Z:\voasrv\HPCHEM1\MSVOA_W\Data\VW082922\
 Data File : VW024469.D
 Acq On : 30 Aug 2022 01:02
 Operator : SY/VA
 Sample : N4345-08
 Misc : 5.28g/10mL/MSVOA_W/SOIL
 ALS Vial : 1 Sample Multiplier: 1

Instrument :
 MSVOA_W
 ClientSampleId :
 DBVS8

Integration Parameters: LSCINT.P

Integrator: RTE
 Smoothing : OFF
 Sampling : 1
 Start Thrs: 0.2
 Stop Thrs : 0

Filtering: 5
 Min Area: 0 % of largest Peak
 Max Peaks: 100
 Peak Location: TOP

If leading or trailing edge < 100 prefer < Baseline drop else tangent >
 Peak separation: 5

Method : Z:\voasrv\HPCHEM1\MSVOA_W\Method\SFAMWLM082622SMA.M
 Title : SFAM01.0

37	7.848	973	975	979	rVB5	1538	2052	0.05%	0.015%
38	8.043	1005	1007	1012	rVB6	1386	1875	0.04%	0.014%
39	8.110	1017	1018	1021	rBV3	1443	1489	0.04%	0.011%
40	8.183	1026	1030	1033	rBV6	801	1261	0.03%	0.010%
41	8.275	1033	1045	1060	rBV2	381189	1187249	28.12%	8.954%
42	8.842	1129	1138	1149	rVV	407888	798110	18.90%	6.019%
43	9.092	1172	1179	1187	rVB3	23265	52453	1.24%	0.396%
44	9.165	1189	1191	1193	rBV3	1259	1101	0.03%	0.008%
45	9.275	1200	1209	1218	rBV	261987	535491	12.68%	4.038%
46	9.506	1244	1247	1249	rVB4	1340	1411	0.03%	0.011%
47	9.573	1255	1258	1260	rBV4	1459	1419	0.03%	0.011%
48	9.707	1277	1280	1281	rBV3	1177	1046	0.02%	0.008%
49	9.726	1281	1283	1287	rVB5	1394	1829	0.04%	0.014%
50	9.890	1308	1310	1312	rBV2	1231	1082	0.03%	0.008%
51	9.927	1315	1316	1321	rBV5	1788	2274	0.05%	0.017%
52	10.030	1326	1333	1344	rVV	127697	236303	5.60%	1.782%
53	10.122	1344	1348	1353	rVB5	4491	7699	0.18%	0.058%
54	10.207	1360	1362	1363	rBV2	1734	1188	0.03%	0.009%
55	10.323	1371	1381	1388	rBV	554276	976948	23.14%	7.368%
56	10.579	1417	1423	1429	rVB	85144	144505	3.42%	1.090%
57	10.701	1437	1443	1448	rBV2	19603	36316	0.86%	0.274%
58	10.860	1461	1469	1475	rBV	2509113	4221695	100.00%	31.838%
59	10.921	1475	1479	1489	rVB	133970	236535	5.60%	1.784%
60	11.061	1497	1502	1510	rBV3	28246	48159	1.14%	0.363%
61	11.286	1537	1539	1541	rBV3	1806	1701	0.04%	0.013%
62	11.439	1559	1564	1569	rVB3	10329	19124	0.45%	0.144%
63	11.628	1587	1595	1605	rBV	599226	1007727	23.87%	7.600%
64	11.896	1638	1639	1643	rBV5	1260	1659	0.04%	0.013%
65	12.073	1666	1668	1670	rVB3	1727	945	0.02%	0.007%
66	12.097	1670	1672	1677	rBV6	1052	1562	0.04%	0.012%
67	12.158	1680	1682	1684	rBV2	1524	1548	0.04%	0.012%
68	12.280	1701	1702	1706	rVV3	1405	906	0.02%	0.007%
69	12.347	1710	1713	1716	rVB5	1232	1564	0.04%	0.012%
70	12.463	1727	1732	1736	rBV7	3262	5434	0.13%	0.041%
71	12.603	1747	1755	1761	rBV3	16634	31864	0.75%	0.240%
72	12.689	1762	1769	1778	rVB	225969	371306	8.80%	2.800%
73	12.792	1782	1786	1789	rVB6	1814	2286	0.05%	0.017%
74	12.829	1791	1792	1796	rVB4	1471	1062	0.03%	0.008%
75	12.890	1800	1802	1805	rBV4	1376	1965	0.05%	0.015%
76	12.939	1806	1810	1813	rVV6	2850	3248	0.08%	0.024%

Data Path : Z:\voasrv\HPCHEM1\MSVOA_W\Data\VW082922\
 Data File : VW024469.D
 Acq On : 30 Aug 2022 01:02
 Operator : SY/VA
 Sample : N4345-08
 Misc : 5.28g/10mL/MSVOA_W/SOIL
 ALS Vial : 1 Sample Multiplier: 1

Instrument :
 MSVOA_W
 ClientSampleId :
 DBVS8

Integration Parameters: LSCINT.P
 Integrator: RTE
 Smoothing : OFF Filtering: 5
 Sampling : 1 Min Area: 0 % of largest Peak
 Start Thrs: 0.2 Max Peaks: 100
 Stop Thrs : 0 Peak Location: TOP

If leading or trailing edge < 100 prefer < Baseline drop else tangent >
 Peak separation: 5

Method : Z:\voasrv\HPCHEM1\MSVOA_W\Method\SFAMWLM082622SMA.M
 Title : SFAM01.0

77	13.024	1822	1824	1825	rBV2	1474	964	0.02%	0.007%
78	13.127	1839	1841	1844	rVB4	1690	1211	0.03%	0.009%
79	13.176	1847	1849	1854	rBV7	1229	2203	0.05%	0.017%
80	13.280	1864	1866	1867	rBV2	2023	1329	0.03%	0.010%
81	13.396	1883	1885	1894	rVB8	2291	4633	0.11%	0.035%
82	13.475	1894	1898	1900	rBV5	1941	3002	0.07%	0.023%
83	13.554	1904	1911	1924	rVV	583920	914546	21.66%	6.897%
84	13.847	1953	1959	1970	rVB	465899	777829	18.42%	5.866%
85	14.060	1991	1994	1998	rVB3	8013	10730	0.25%	0.081%
86	14.170	2008	2012	2013	rBV4	823	1133	0.03%	0.009%
87	14.249	2023	2025	2026	rBV	1584	920	0.02%	0.007%
88	14.420	2051	2053	2056	rVB4	1667	1315	0.03%	0.010%
89	14.457	2056	2059	2061	rBV4	873	1018	0.02%	0.008%
90	14.505	2065	2067	2071	rBV5	1158	1499	0.04%	0.011%
91	14.591	2079	2081	2083	rBV3	1201	1000	0.02%	0.008%
92	14.859	2123	2125	2127	rBV3	1265	1039	0.02%	0.008%
93	15.078	2159	2161	2164	rVB4	1935	1558	0.04%	0.012%
94	15.273	2191	2193	2196	rVB4	1594	1054	0.02%	0.008%
95	15.316	2198	2200	2204	rVB4	1620	1499	0.04%	0.011%
96	15.554	2235	2239	2241	rVB5	1411	1693	0.04%	0.013%
97	16.292	2356	2360	2362	rBV5	1524	1642	0.04%	0.012%
98	16.340	2366	2368	2369	rBV2	1218	991	0.02%	0.007%
99	16.438	2382	2384	2388	rBV5	878	944	0.02%	0.007%
100	16.535	2398	2400	2403	rVV3	1016	1256	0.03%	0.009%

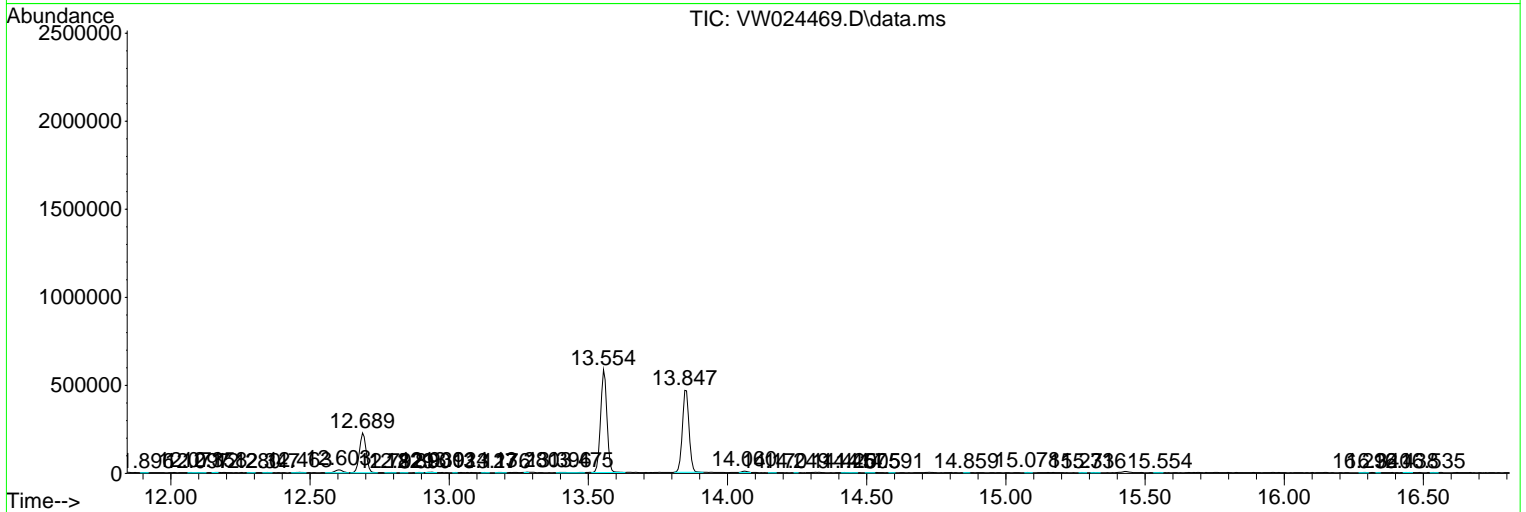
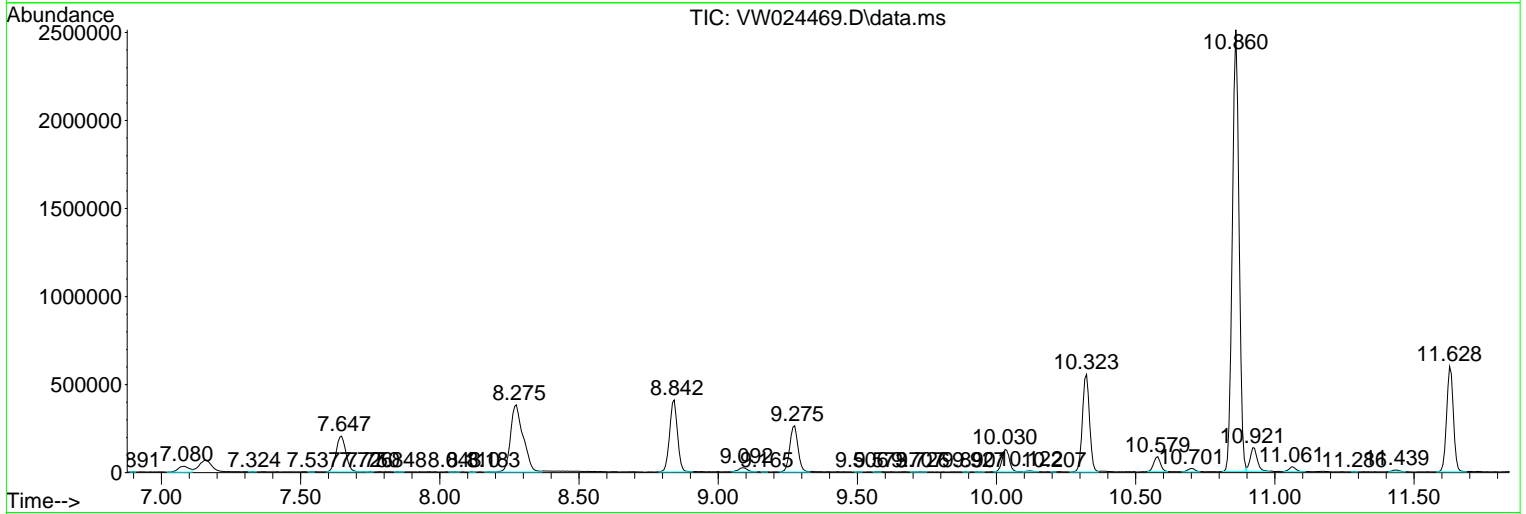
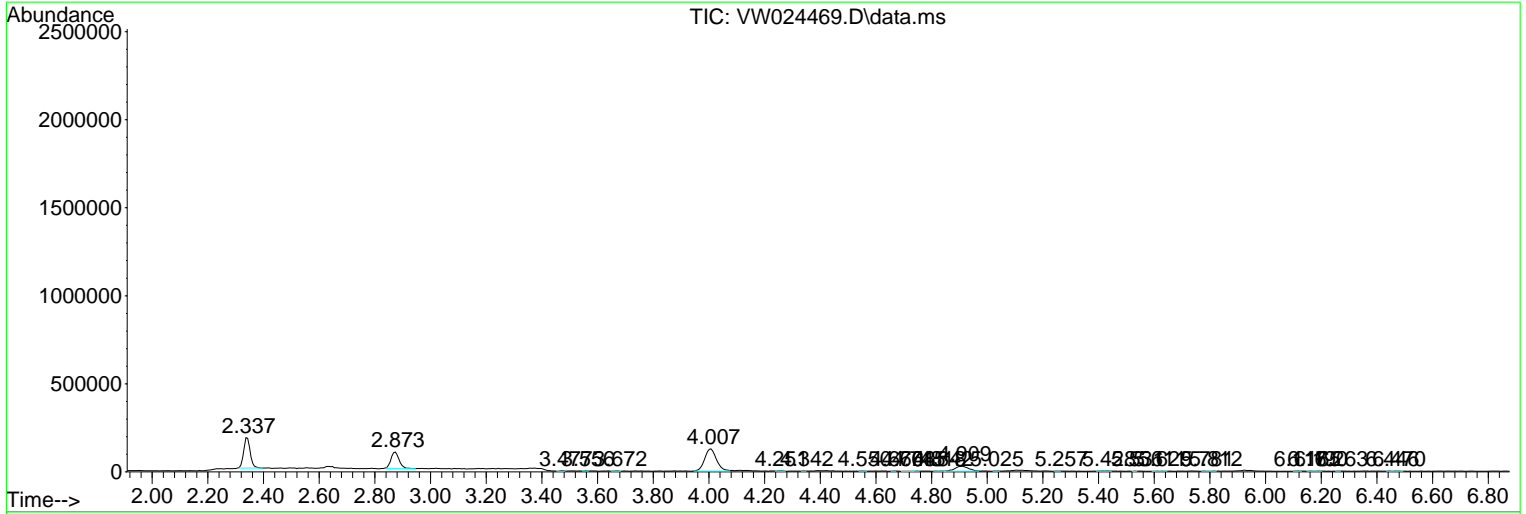
Sum of corrected areas: 13259896

Data Path : Z:\voasrv\HPCHEM1\MSVOA_W\Data\VW082922\
 Data File : VW024469.D
 Acq On : 30 Aug 2022 01:02
 Operator : SY/VA
 Sample : N4345-08
 Misc : 5.28g/10mL/MSVOA_W/SOIL
 ALS Vial : 1 Sample Multiplier: 1

Instrument :
 MSVOA_W
ClientSampleId :
 DBVS8

Quant Method : Z:\voasrv\HPCHEM1\MSVOA_W\Method\SFAMWLM082622SMA.M
 Quant Title : SFAM01.0

TIC Library : C:\Database\NIST20.L
 TIC Integration Parameters: LSCINT.P



Library Search Compound Report

Data Path : Z:\voasrv\HPCHEM1\MSVOA_W\Data\VW082922\
Data File : VW024469.D
Acq On : 30 Aug 2022 01:02
Operator : SY/VA
Sample : N4345-08
Misc : 5.28g/10mL/MSVOA_W/SOIL
ALS Vial : 1 Sample Multiplier: 1

Instrument :
MSVOA_W
ClientSampleId :
DBVS8

Quant Method : Z:\voasrv\HPCHEM1\MSVOA_W\Method\SFAMWLM082622SMA.M
Quant Title : SFAM01.0

TIC Library : C:\Database\NIST20.L
TIC Integration Parameters: LSCINT.P

No Library Search Compounds Detected

Data Path : Z:\voasrv\HPCHEM1\MSVOA_W\Data\VW082922\
Data File : VW024469.D
Acq On : 30 Aug 2022 01:02
Operator : SY/VA
Sample : N4345-08
Misc : 5.28g/10mL/MSVOA_W/SOIL
ALS Vial : 1 Sample Multiplier: 1

Instrument :
MSVOA_W
ClientSampleId :
DBVS8

Quant Method : Z:\voasrv\HPCHEM1\MSVOA_W\Method\SFAMWLM082622SMA.M
Quant Title : SFAM01.0

TIC Library : C:\Database\NIST0.L
TIC Integration Parameters: LSCINT.P

TIC Top Hit name	RT	EstConc	Units	Response	--Internal Standard--		
					#	RT	Resp Conc
