

Data Path : Z:\voasrv\HPCHEM1\MSVOA\_W\Data\VW082922\  
 Data File : VW024498.D  
 Acq On : 30 Aug 2022 18:24  
 Operator : SY/VA  
 Sample : N4440-04  
 Misc : 4.60g/10mL/MSVOA\_W/SOIL  
 ALS Vial : 1 Sample Multiplier: 1

Instrument :  
 MSVOA\_W  
 ClientSampleId :  
 COZKO

Integration Parameters: LSCINT.P

Integrator: RTE  
 Smoothing : OFF  
 Sampling : 1  
 Start Thrs : 0.2  
 Stop Thrs : 0

Filtering: 5  
 Min Area: 0 % of largest Peak  
 Max Peaks: 100  
 Peak Location: TOP

If leading or trailing edge < 100 prefer < Baseline drop else tangent >  
 Peak separation: 5

Method : Z:\voasrv\HPCHEM1\MSVOA\_W\Method\SFAMWLM082622SMA.M  
 Title : SFAM01.0

Signal : TIC: VW024498.D\data.ms

| peak # | R.T. min | first scan | max scan | last scan | PK TY | peak height | corr. area | corr. % max. | % of total |
|--------|----------|------------|----------|-----------|-------|-------------|------------|--------------|------------|
| 1      | 2.337    | 66         | 71       | 81        | rVB   | 189062      | 309976     | 26.82%       | 4.307%     |
| 2      | 2.873    | 153        | 159      | 171       | rVB   | 113934      | 247354     | 21.40%       | 3.437%     |
| 3      | 3.623    | 281        | 282      | 285       | rBV3  | 1241        | 1170       | 0.10%        | 0.016%     |
| 4      | 3.739    | 298        | 301      | 303       | rBV4  | 1241        | 1518       | 0.13%        | 0.021%     |
| 5      | 3.897    | 326        | 327      | 329       | rVB2  | 1023        | 646        | 0.06%        | 0.009%     |
| 6      | 4.001    | 335        | 344      | 360       | rBV   | 122590      | 362350     | 31.35%       | 5.035%     |
| 7      | 4.245    | 380        | 384      | 387       | rBV6  | 1896        | 2703       | 0.23%        | 0.038%     |
| 8      | 4.269    | 387        | 388      | 391       | rBV3  | 1434        | 1213       | 0.10%        | 0.017%     |
| 9      | 4.416    | 406        | 412      | 418       | rVB6  | 3942        | 9515       | 0.82%        | 0.132%     |
| 10     | 4.586    | 439        | 440      | 442       | rVB2  | 1573        | 743        | 0.06%        | 0.010%     |
| 11     | 4.635    | 446        | 448      | 450       | rBV3  | 839         | 1034       | 0.09%        | 0.014%     |
| 12     | 4.733    | 462        | 464      | 466       | rBV3  | 1518        | 1264       | 0.11%        | 0.018%     |
| 13     | 4.909    | 481        | 493      | 508       | rVV2  | 30835       | 106035     | 9.18%        | 1.473%     |
| 14     | 5.293    | 554        | 556      | 558       | rBV3  | 1041        | 933        | 0.08%        | 0.013%     |
| 15     | 5.318    | 558        | 560      | 563       | rVB4  | 1428        | 1783       | 0.15%        | 0.025%     |
| 16     | 5.361    | 563        | 567      | 569       | rBV5  | 1596        | 1917       | 0.17%        | 0.027%     |
| 17     | 5.379    | 569        | 570      | 571       | rBV2  | 1352        | 754        | 0.07%        | 0.010%     |
| 18     | 5.397    | 571        | 573      | 574       | rVV2  | 1769        | 1252       | 0.11%        | 0.017%     |
| 19     | 5.415    | 574        | 576      | 581       | rVV6  | 1959        | 2877       | 0.25%        | 0.040%     |
| 20     | 5.476    | 584        | 586      | 587       | rVB2  | 1774        | 992        | 0.09%        | 0.014%     |
| 21     | 5.501    | 587        | 590      | 591       | rBV3  | 620         | 615        | 0.05%        | 0.009%     |
| 22     | 5.592    | 602        | 605      | 606       | rBV3  | 1125        | 962        | 0.08%        | 0.013%     |
| 23     | 5.635    | 609        | 612      | 613       | rBV3  | 1031        | 853        | 0.07%        | 0.012%     |
| 24     | 5.684    | 618        | 620      | 621       | rBV2  | 990         | 863        | 0.07%        | 0.012%     |
| 25     | 5.787    | 635        | 637      | 639       | rVB3  | 1256        | 871        | 0.08%        | 0.012%     |
| 26     | 5.842    | 644        | 646      | 648       | rBV3  | 1062        | 955        | 0.08%        | 0.013%     |
| 27     | 5.873    | 649        | 651      | 654       | rBV4  | 1064        | 1416       | 0.12%        | 0.020%     |
| 28     | 5.934    | 654        | 661      | 667       | rVB10 | 5137        | 15112      | 1.31%        | 0.210%     |
| 29     | 6.104    | 687        | 689      | 692       | rBV4  | 900         | 873        | 0.08%        | 0.012%     |
| 30     | 6.135    | 692        | 694      | 697       | rVB4  | 1234        | 804        | 0.07%        | 0.011%     |
| 31     | 6.220    | 706        | 708      | 710       | rBV3  | 1158        | 1312       | 0.11%        | 0.018%     |
| 32     | 6.299    | 719        | 721      | 723       | rVB3  | 1710        | 1164       | 0.10%        | 0.016%     |
| 33     | 6.348    | 727        | 729      | 731       | rBV3  | 1644        | 1232       | 0.11%        | 0.017%     |
| 34     | 6.373    | 731        | 733      | 734       | rBV2  | 1044        | 945        | 0.08%        | 0.013%     |
| 35     | 6.683    | 781        | 784      | 785       | rBV2  | 1140        | 1300       | 0.11%        | 0.018%     |
| 36     | 6.805    | 802        | 804      | 805       | rBV2  | 1624        | 1408       | 0.12%        | 0.020%     |

Data Path : Z:\voasrv\HPCHEM1\MSVOA\_W\Data\VW082922\  
 Data File : VW024498.D  
 Acq On : 30 Aug 2022 18:24  
 Operator : SY/VA  
 Sample : N4440-04  
 Misc : 4.60g/10mL/MSVOA\_W/SOIL  
 ALS Vial : 1 Sample Multiplier: 1

Instrument :  
 MSVOA\_W  
 ClientSampleId :  
 COZKO

Integration Parameters: LSCINT.P

Integrator: RTE  
 Smoothing : OFF  
 Sampling : 1  
 Start Thrs: 0.2  
 Stop Thrs : 0

Filtering: 5  
 Min Area: 0 % of largest Peak  
 Max Peaks: 100  
 Peak Location: TOP

If leading or trailing edge < 100 prefer < Baseline drop else tangent >  
 Peak separation: 5

Method : Z:\voasrv\HPCHEM1\MSVOA\_W\Method\SFAMWLM082622SMA.M  
 Title : SFAM01.0

|    |        |      |      |      |      |        |         |         |         |
|----|--------|------|------|------|------|--------|---------|---------|---------|
| 37 | 6.824  | 805  | 807  | 810  | rVV4 | 922    | 1391    | 0.12%   | 0.019%  |
| 38 | 6.909  | 818  | 821  | 822  | rBV3 | 1040   | 910     | 0.08%   | 0.013%  |
| 39 | 6.927  | 822  | 824  | 825  | rBV2 | 1410   | 954     | 0.08%   | 0.013%  |
| 40 | 6.982  | 831  | 833  | 836  | rVB3 | 813    | 698     | 0.06%   | 0.010%  |
| 41 | 7.086  | 842  | 850  | 854  | rBV2 | 30904  | 79872   | 6.91%   | 1.110%  |
| 42 | 7.506  | 918  | 919  | 921  | rBV2 | 2039   | 1265    | 0.11%   | 0.018%  |
| 43 | 7.641  | 932  | 941  | 951  | rBV  | 218718 | 539990  | 46.73%  | 7.504%  |
| 44 | 7.769  | 961  | 962  | 964  | rBV2 | 1095   | 753     | 0.07%   | 0.010%  |
| 45 | 7.878  | 979  | 980  | 983  | rBV3 | 1021   | 654     | 0.06%   | 0.009%  |
| 46 | 7.927  | 986  | 988  | 992  | rBV5 | 1624   | 1777    | 0.15%   | 0.025%  |
| 47 | 8.073  | 1011 | 1012 | 1014 | rVB2 | 1411   | 668     | 0.06%   | 0.009%  |
| 48 | 8.183  | 1029 | 1030 | 1031 | rBV  | 1452   | 765     | 0.07%   | 0.011%  |
| 49 | 8.269  | 1035 | 1044 | 1060 | rVV2 | 368425 | 1155675 | 100.00% | 16.059% |
| 50 | 8.653  | 1106 | 1107 | 1109 | rBV2 | 979    | 764     | 0.07%   | 0.011%  |
| 51 | 8.720  | 1117 | 1118 | 1121 | rVB3 | 1254   | 1006    | 0.09%   | 0.014%  |
| 52 | 8.842  | 1130 | 1138 | 1148 | rBV  | 244366 | 482247  | 41.73%  | 6.701%  |
| 53 | 9.092  | 1172 | 1179 | 1189 | rVB  | 123540 | 251950  | 21.80%  | 3.501%  |
| 54 | 9.274  | 1199 | 1209 | 1219 | rBV  | 280585 | 581458  | 50.31%  | 8.080%  |
| 55 | 9.695  | 1277 | 1278 | 1283 | rBV5 | 1075   | 1701    | 0.15%   | 0.024%  |
| 56 | 9.860  | 1301 | 1305 | 1306 | rBV4 | 1134   | 1348    | 0.12%   | 0.019%  |
| 57 | 9.988  | 1323 | 1326 | 1327 | rBV3 | 1907   | 2102    | 0.18%   | 0.029%  |
| 58 | 10.030 | 1327 | 1333 | 1342 | rVB2 | 116874 | 217210  | 18.80%  | 3.018%  |
| 59 | 10.207 | 1360 | 1362 | 1364 | rBV2 | 1890   | 2177    | 0.19%   | 0.030%  |
| 60 | 10.244 | 1366 | 1368 | 1371 | rBV4 | 1231   | 922     | 0.08%   | 0.013%  |
| 61 | 10.323 | 1374 | 1381 | 1388 | rBV  | 441174 | 775123  | 67.07%  | 10.771% |
| 62 | 10.512 | 1408 | 1412 | 1413 | rBV4 | 1356   | 1734    | 0.15%   | 0.024%  |
| 63 | 10.573 | 1416 | 1422 | 1429 | rVV  | 70427  | 122411  | 10.59%  | 1.701%  |
| 64 | 10.701 | 1438 | 1443 | 1448 | rBV  | 25602  | 40863   | 3.54%   | 0.568%  |
| 65 | 10.860 | 1462 | 1469 | 1475 | rBV  | 94357  | 165132  | 14.29%  | 2.295%  |
| 66 | 10.927 | 1475 | 1480 | 1493 | rVV  | 120364 | 239521  | 20.73%  | 3.328%  |
| 67 | 11.061 | 1497 | 1502 | 1516 | rVB2 | 38469  | 74658   | 6.46%   | 1.037%  |
| 68 | 11.170 | 1516 | 1520 | 1527 | rBV9 | 2470   | 6576    | 0.57%   | 0.091%  |
| 69 | 11.433 | 1560 | 1563 | 1570 | rVB2 | 13821  | 23799   | 2.06%   | 0.331%  |
| 70 | 11.628 | 1588 | 1595 | 1604 | rBV  | 252155 | 428824  | 37.11%  | 5.959%  |
| 71 | 11.835 | 1624 | 1629 | 1636 | rVB8 | 6174   | 11830   | 1.02%   | 0.164%  |
| 72 | 12.158 | 1676 | 1682 | 1688 | rBV2 | 15073  | 29120   | 2.52%   | 0.405%  |
| 73 | 12.371 | 1715 | 1717 | 1721 | rVB5 | 820    | 726     | 0.06%   | 0.010%  |
| 74 | 12.469 | 1728 | 1733 | 1739 | rVV8 | 3967   | 7132    | 0.62%   | 0.099%  |
| 75 | 12.603 | 1751 | 1755 | 1762 | rVB3 | 21836  | 38380   | 3.32%   | 0.533%  |
| 76 | 12.688 | 1762 | 1769 | 1776 | rBV  | 195631 | 327786  | 28.36%  | 4.555%  |

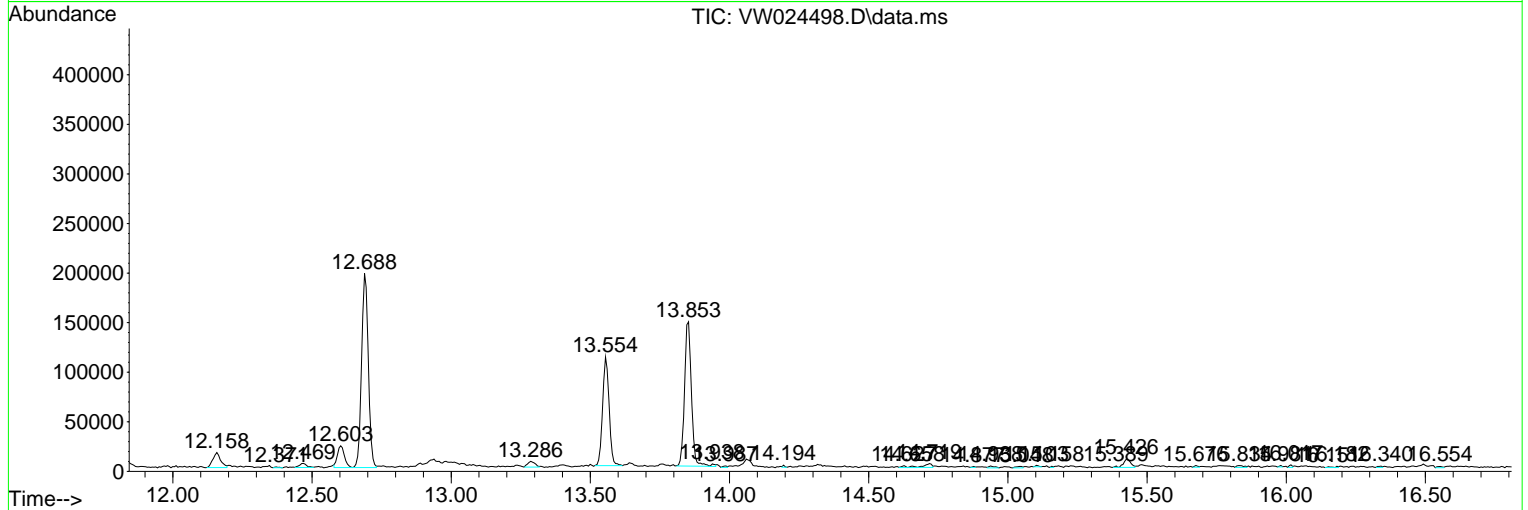
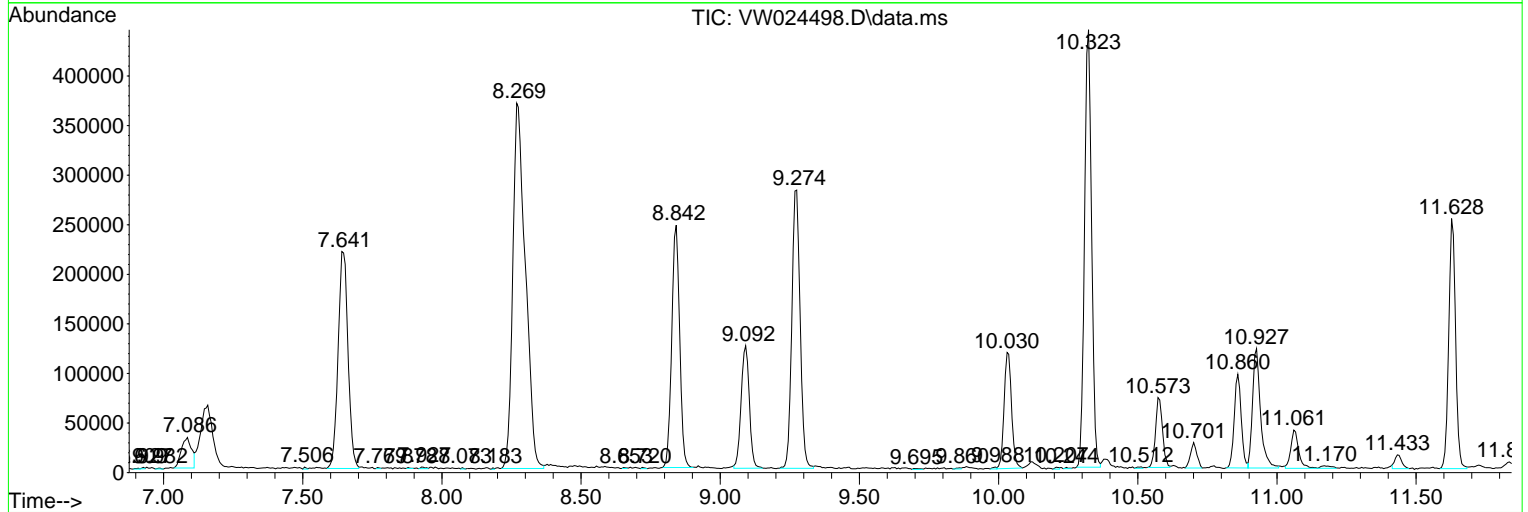
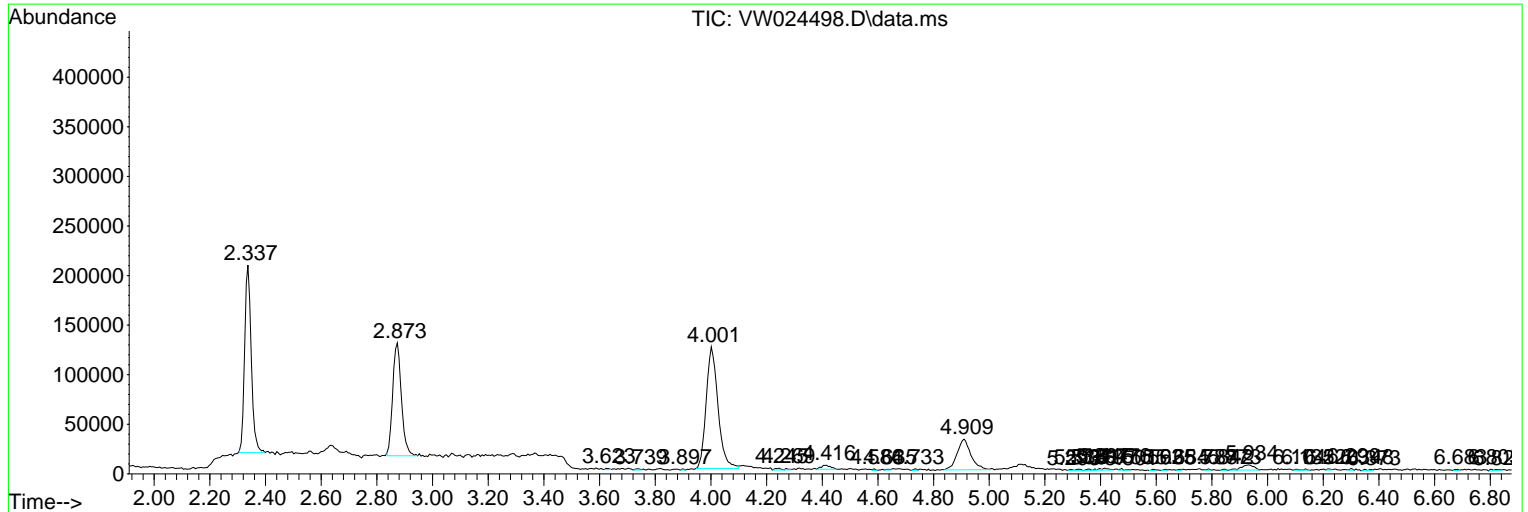


Data Path : Z:\voasrv\HPCHEM1\MSVOA\_W\Data\VW082922\  
 Data File : VW024498.D  
 Acq On : 30 Aug 2022 18:24  
 Operator : SY/VA  
 Sample : N4440-04  
 Misc : 4.60g/10mL/MSVOA\_W/SOIL  
 ALS Vial : 1 Sample Multiplier: 1

**Instrument :**  
 MSVOA\_W  
**ClientSampleId :**  
 COZK0

Quant Method : Z:\voasrv\HPCHEM1\MSVOA\_W\Method\SFAMWLM082622SMA.M  
 Quant Title : SFAM01.0

TIC Library : C:\Database\NIST20.L  
 TIC Integration Parameters: LSCINT.P



Data Path : Z:\voasrv\HPCHEM1\MSVOA\_W\Data\VW082922\  
 Data File : VW024498.D  
 Acq On : 30 Aug 2022 18:24  
 Operator : SY/VA  
 Sample : N4440-04  
 Misc : 4.60g/10mL/MSVOA\_W/SOIL  
 ALS Vial : 1 Sample Multiplier: 1

Instrument :  
 MSVOA\_W  
 ClientSampleId :  
 COZK0

Quant Method : Z:\voasrv\HPCHEM1\MSVOA\_W\Method\SFAMWLM082622SMA.M  
 Quant Title : SFAM01.0

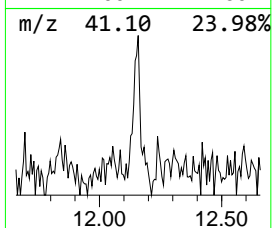
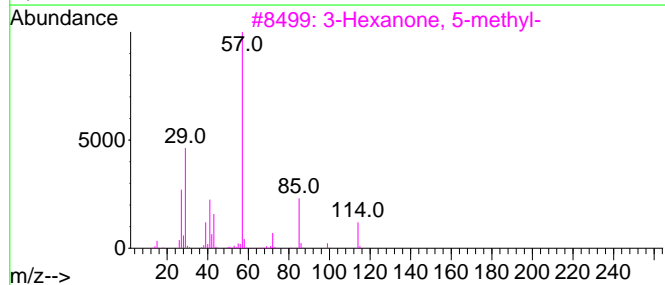
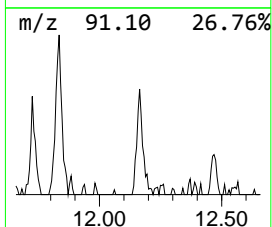
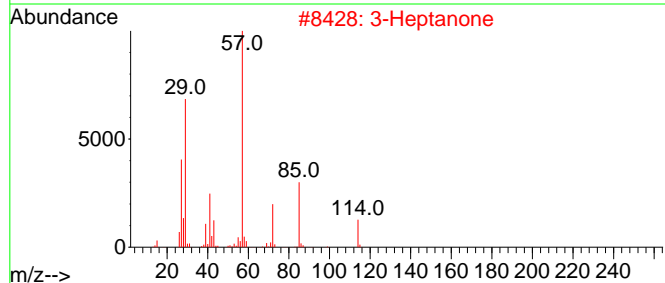
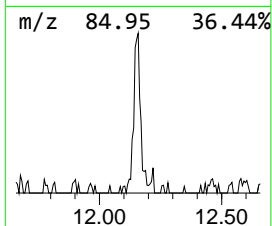
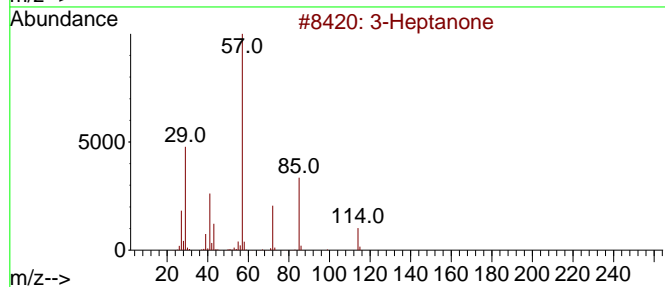
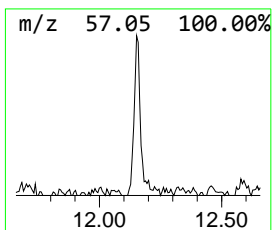
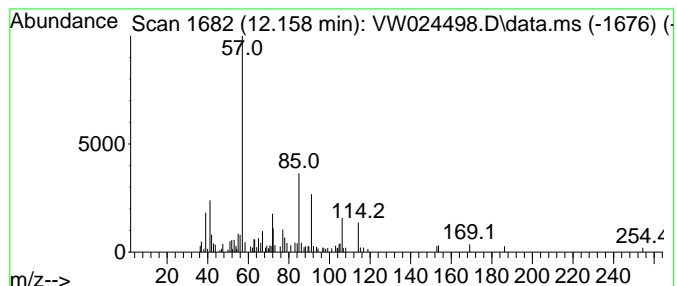
TIC Library : C:\Database\NIST20.L  
 TIC Integration Parameters: LSCINT.P

\*\*\*\*\*  
 Peak Number 5 3-Heptanone Concentration Rank 6

| R.T.   | EstConc   | Area  | Relative to ISTD | R.T.   |
|--------|-----------|-------|------------------|--------|
| 12.158 | 1.70 ug/L | 29120 | Chlorobenzene-d5 | 11.628 |

| Hit# of 5 | Tentative ID          | MW  | MolForm | CAS#        | Qual |
|-----------|-----------------------|-----|---------|-------------|------|
| 1         | 3-Heptanone           | 114 | C7H14O  | 000106-35-4 | 58   |
| 2         | 3-Heptanone           | 114 | C7H14O  | 000106-35-4 | 47   |
| 3         | 3-Hexanone, 5-methyl- | 114 | C7H14O  | 000623-56-3 | 46   |
| 4         | 3-Hexanone, 5-methyl- | 114 | C7H14O  | 000623-56-3 | 46   |
| 5         | 3-Heptanone           | 114 | C7H14O  | 000106-35-4 | 38   |



Data Path : Z:\voasrv\HPCHEM1\MSVOA\_W\Data\VW082922\  
 Data File : VW024498.D  
 Acq On : 30 Aug 2022 18:24  
 Operator : SY/VA  
 Sample : N4440-04  
 Misc : 4.60g/10mL/MSVOA\_W/SOIL  
 ALS Vial : 1 Sample Multiplier: 1

Instrument :  
 MSVOA\_W  
 ClientSampleId :  
 COZKO

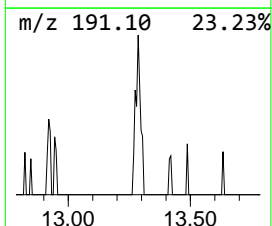
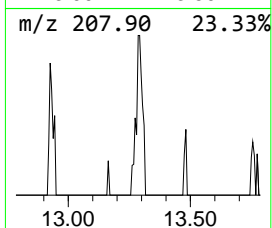
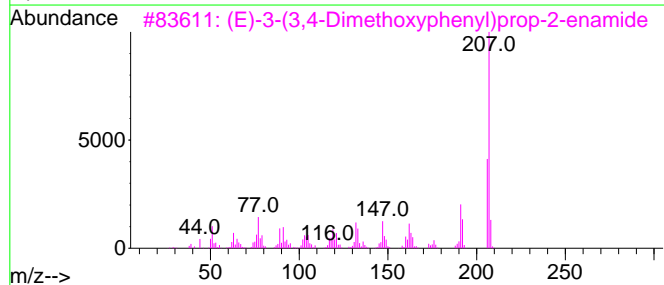
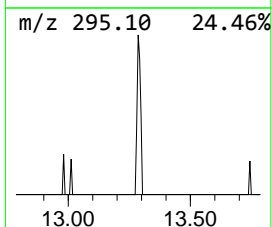
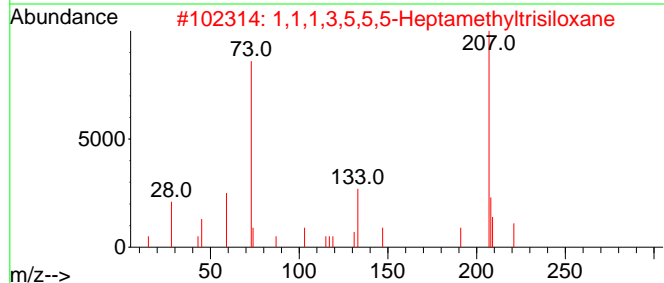
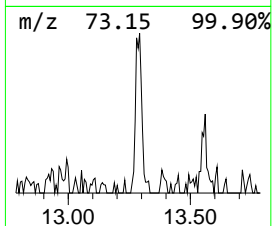
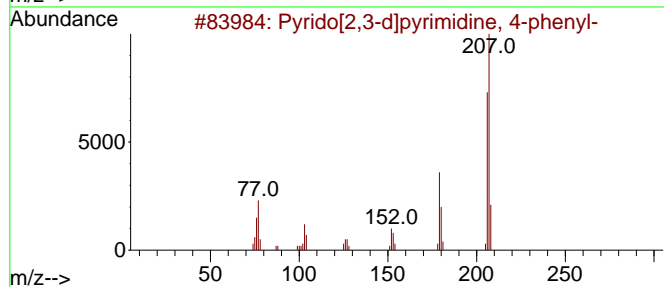
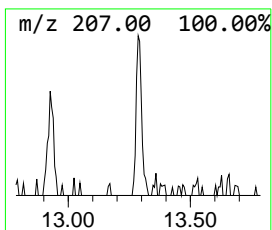
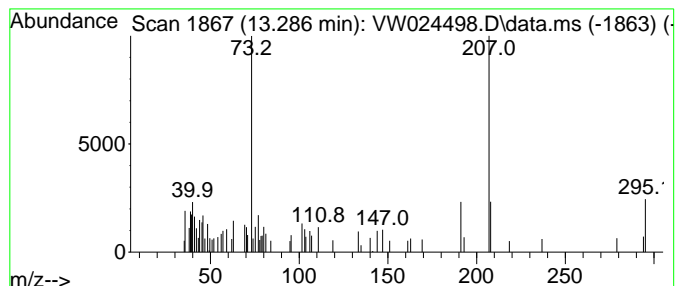
Quant Method : Z:\voasrv\HPCHEM1\MSVOA\_W\Method\SFAMWLM082622SMA.M  
 Quant Title : SFAM01.0

TIC Library : C:\Database\NIST20.L  
 TIC Integration Parameters: LSCINT.P

\*\*\*\*\*  
 Peak Number 7 Pyrido[2,3-d]pyrimidine, 4-... Concentration Rank 7

| R.T.   | EstConc   | Area  | Relative to ISTD       | R.T.   |
|--------|-----------|-------|------------------------|--------|
| 13.286 | 1.48 ug/L | 10484 | 1,4-Dichlorobenzene-d4 | 13.554 |

| Hit# | of | 5 | Tentative ID                        | MW  | MolForm    | CAS#         | Qual |
|------|----|---|-------------------------------------|-----|------------|--------------|------|
| 1    |    |   | Pyrido[2,3-d]pyrimidine, 4-phenyl-  | 207 | C13H9N3    | 028732-75-4  | 50   |
| 2    |    |   | 1,1,1,3,5,5,5-Heptamethyltrisilo... | 222 | C7H22O2Si3 | 001873-88-7  | 50   |
| 3    |    |   | (E)-3-(3,4-Dimethoxyphenyl)prop-... | 207 | C11H13NO3  | 130973-10-3  | 46   |
| 4    |    |   | Carvacrol, TMS derivative           | 222 | C13H22OSi  | 1000367-02-2 | 43   |
| 5    |    |   | Thymol, TBDMS derivative            | 264 | C16H28OSi  | 330455-64-6  | 40   |



Data Path : Z:\voasrv\HPCHEM1\MSVOA\_W\Data\VW082922\  
Data File : VW024498.D  
Acq On : 30 Aug 2022 18:24  
Operator : SY/VA  
Sample : N4440-04  
Misc : 4.60g/10mL/MSVOA\_W/SOIL  
ALS Vial : 1 Sample Multiplier: 1

Instrument :  
MSVOA\_W  
ClientSampleId :  
C0ZK0

Quant Method : Z:\voasrv\HPCHEM1\MSVOA\_W\Method\SFAMWLM082622SMA.M  
Quant Title : SFAM01.0

TIC Library : C:\Database\NIST20.L  
TIC Integration Parameters: LSCINT.P

| TIC Top Hit name   | RT     | EstConc | Units | Response | --Internal Standard-- |        |        |      |
|--------------------|--------|---------|-------|----------|-----------------------|--------|--------|------|
|                    |        |         |       |          | #                     | RT     | Resp   | Conc |
| 3-Heptanone        | 12.158 | 1.7     | ug/L  | 29120    | 2                     | 11.628 | 428824 | 25.0 |
| Pyrido[2,3-d]py... | 13.286 | 1.5     | ug/L  | 10484    | 3                     | 13.554 | 176650 | 25.0 |