

Data Path : Z:\voasrv\HPCHEM1\MSVOA_W\Data\VW083122\
 Data File : VW024514.D
 Acq On : 31 Aug 2022 15:15
 Operator : SY/VA
 Sample : N4319-04
 Misc : 4.99g/10mL/MSVOA_W/SOIL
 ALS Vial : 1 Sample Multiplier: 1

Instrument :
 MSVOA_W
 ClientSampleId :
 VHBLK002

Quant Time: Sep 01 03:01:20 2022
 Quant Method : Z:\voasrv\HPCHEM1\MSVOA_W\Method\SFAMWLM082622SMA.M
 Quant Title : SFAM01.0
 QLast Update : Wed Aug 31 02:55:40 2022
 Response via : Initial Calibration

Compound	R.T.	QIon	Response	Conc	Units	Dev(Min)

Internal Standards						
1) 1,4-Difluorobenzene	8.842	114	305181	25.000	ug/L	0.00
28) Chlorobenzene-d5	11.628	117	295716	25.000	ug/L	0.00
58) 1,4-Dichlorobenzene-d4	13.554	152	133895	25.000	ug/L	0.00
System Monitoring Compounds						
4) Vinyl Chloride-d3	2.343	65	189742	22.555	ug/L	0.00
Spiked Amount	25.000	Range 30 - 150	Recovery =	90.200%		
7) Chloroethane-d5	2.873	69	121543	19.283	ug/L	0.00
Spiked Amount	25.000	Range 30 - 150	Recovery =	77.120%		
11) 1,1-Dichloroethene-d2	4.007	63	131703	18.051	ug/L	0.00
Spiked Amount	25.000	Range 45 - 110	Recovery =	72.200%		
21) 2-Butanone-d5	7.080	46	48449	31.267	ug/L	0.00
Spiked Amount	50.000	Range 20 - 135	Recovery =	62.540%		
24) Chloroform-d	7.641	84	188717	19.235	ug/L	0.00
Spiked Amount	25.000	Range 40 - 150	Recovery =	76.920%		
26) 1,2-Dichloroethane-d4	8.305	65	108908	18.304	ug/L	0.00
Spiked Amount	25.000	Range 70 - 130	Recovery =	73.200%		
32) Benzene-d6	8.275	84	378746	22.354	ug/L	0.00
Spiked Amount	25.000	Range 20 - 135	Recovery =	89.400%		
36) 1,2-Dichloropropane-d6	9.274	67	107500	20.401	ug/L	0.00
Spiked Amount	25.000	Range 70 - 120	Recovery =	81.600%		
41) Toluene-d8	10.323	98	354360	21.997	ug/L	0.00
Spiked Amount	25.000	Range 30 - 130	Recovery =	88.000%		
43) trans-1,3-Dichloroprop...	10.579	79	44551	18.067	ug/L	0.00
Spiked Amount	25.000	Range 30 - 135	Recovery =	72.280%		
47) 2-Hexanone-d5	10.927	63	37666	31.943	ug/L	0.00
Spiked Amount	50.000	Range 20 - 135	Recovery =	63.880%		
56) 1,1,2,2-Tetrachloroeth...	12.688	84	93013	15.591	ug/L	0.00
Spiked Amount	25.000	Range 45 - 120	Recovery =	62.360%		
66) 1,2-Dichlorobenzene-d4	13.853	152	109335	21.684	ug/L	0.00
Spiked Amount	25.000	Range 75 - 120	Recovery =	86.720%		

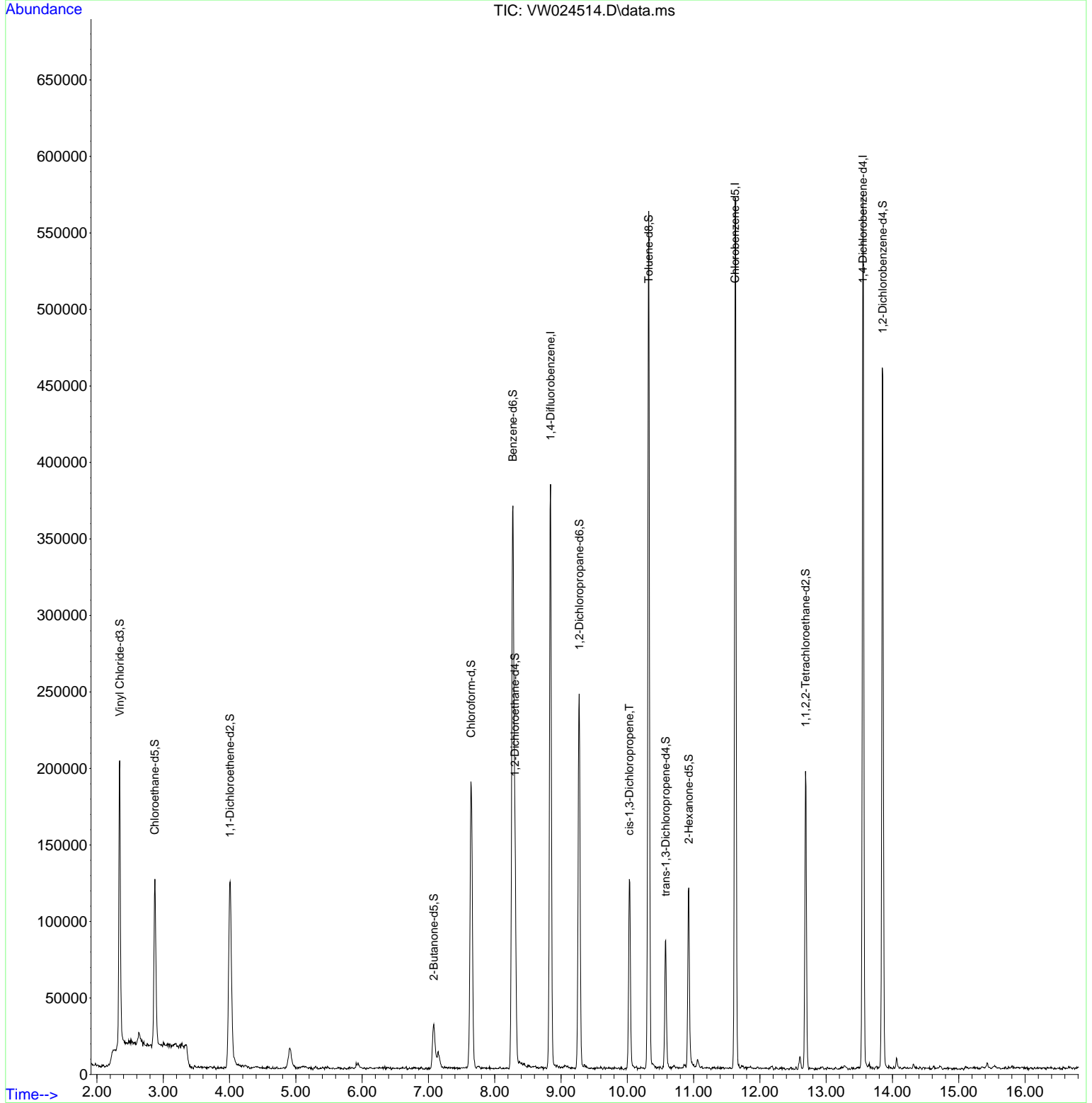
Target Compounds						Qvalue
39) cis-1,3-Dichloropropene	10.030	75	4462	0.672	ug/L	83

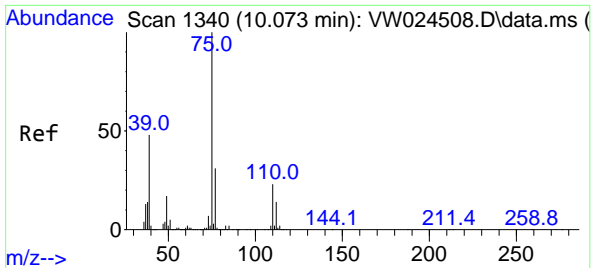
(#) = qualifier out of range (m) = manual integration (+) = signals summed

Data Path : Z:\voasrv\HPCHEM1\MSVOA_W\Data\VW083122\
 Data File : VW024514.D
 Acq On : 31 Aug 2022 15:15
 Operator : SY/VA
 Sample : N4319-04
 Misc : 4.99g/10mL/MSVOA_W/SOIL
 ALS Vial : 1 Sample Multiplier: 1

Instrument :
 MSVOA_W
 ClientSampleId :
 VHBLK002

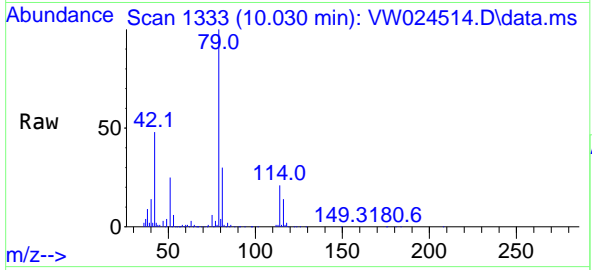
Quant Time: Sep 01 03:01:20 2022
 Quant Method : Z:\voasrv\HPCHEM1\MSVOA_W\Method\SFAMWLM082622SMA.M
 Quant Title : SFAM01.0
 QLast Update : Wed Aug 31 02:55:40 2022
 Response via : Initial Calibration





#39
 cis-1,3-Dichloropropene
 Concen: 0.672 ug/L
 RT: 10.030 min Scan# 11
 Delta R.T. -0.037 min
 Lab File: VW024514.D
 Acq: 31 Aug 2022 15:15

Instrument : MSVOA_W
 ClientSampleId : VHBLK002



Tgt Ion: 75 Resp: 4462

Ion	Ratio	Lower	Upper
75	100		
77	40.5	21.8	40.6

