

Data Path : Z:\VOASRV\HPCHEM1\MSVOA_W\DATA\VW090219\
 Data File : VW012518.D
 Acq On : 03 Sep 2019 00:40
 Operator : SY/VA
 Sample : K4544-04
 Misc : 4.85G/5ML/MSVOA_W/SOIL
 ALS Vial : 1 Sample Multiplier: 1

Instrument :
 MSVOA_W
 ClientSampleId :
 T16-17-B3-(0)

Quant Time: Sep 03 07:45:05 2019
 Quant Method : Z:\VOASRV\HPCHEM1\MSVOA_W\METHOD\82W082319S.M
 Quant Title : SW846 8260
 QLast Update : Mon Aug 26 07:18:31 2019
 Response via : Initial Calibration

Internal Standards	R.T.	QIon	Response	Conc	Units	Dev(Min)
1) Pentafluorobenzene	7.95	168	264777	50.00	ug/l	0.00
34) 1,4-Difluorobenzene	8.84	114	426858	50.00	ug/l	0.00
63) Chlorobenzene-d5	11.63	117	334162	50.00	ug/l	0.00
72) 1,4-Dichlorobenzene-d4	13.55	152	99511	50.00	ug/l	0.00

System Monitoring Compounds

33) 1,2-Dichloroethane-d4	8.31	65	156201	49.63	ug/l	0.00
Spiked Amount				50.000		
			Recovery	=	99.26%	
35) Dibromofluoromethane	7.88	113	126942	49.82	ug/l	0.00
Spiked Amount				50.000		
			Recovery	=	99.64%	
50) Toluene-d8	10.32	98	514958	49.85	ug/l	0.00
Spiked Amount				50.000		
			Recovery	=	99.70%	
62) 4-Bromofluorobenzene	12.62	95	141768	38.93	ug/l	0.00
Spiked Amount				50.000		
			Recovery	=	77.86%	

Target Compounds

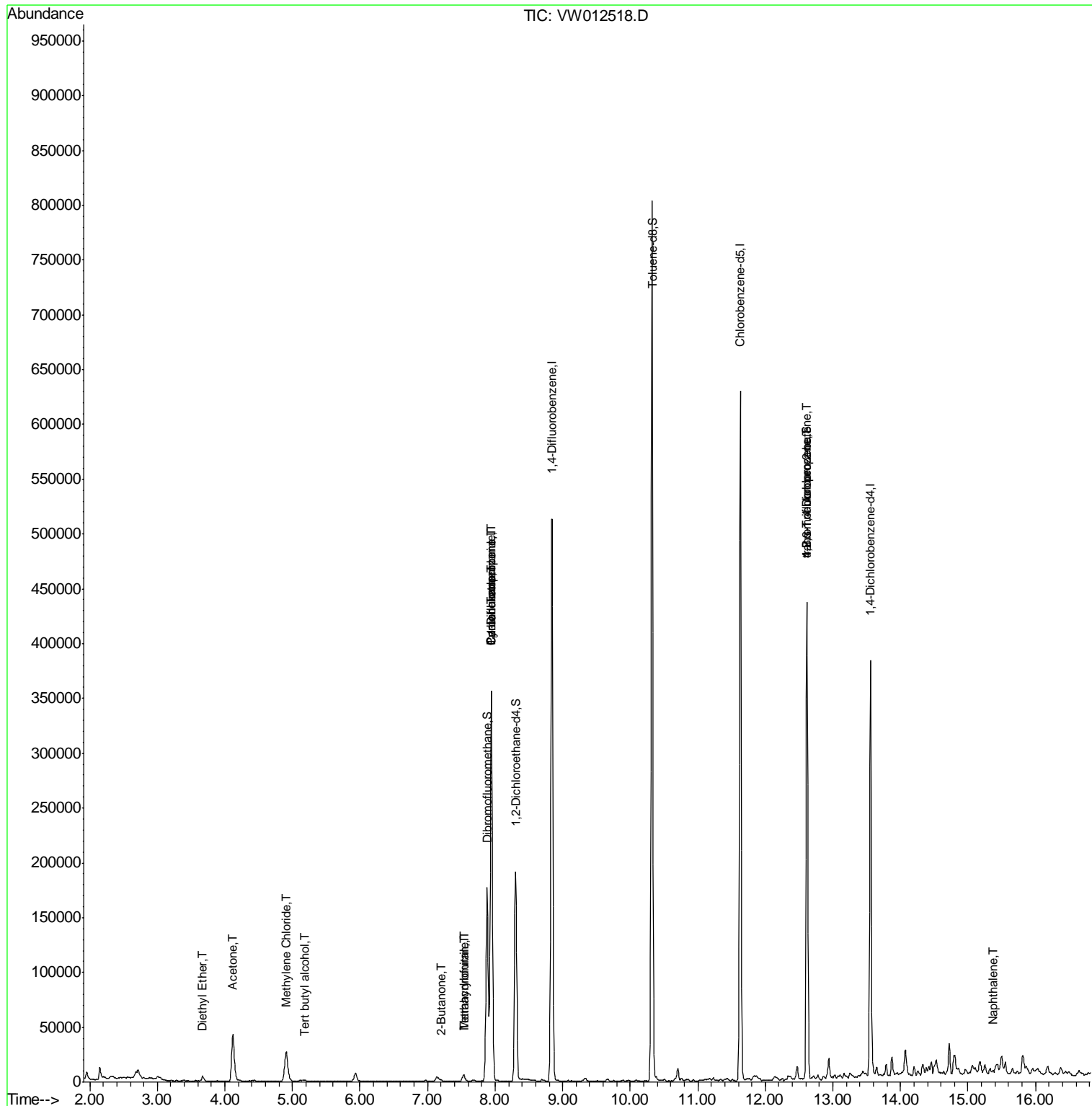
						Qvalue
8) Diethyl Ether	3.67	74	2275	1.544	ug/l	92
11) Tert butyl alcohol	5.17	59	1887	9.962	ug/l #	78
16) Acetone	4.12	43	82005	101.923	ug/l	99
20) Methylene Chloride	4.90	84	19232	6.323	ug/l	97
25) 2-Butanone	7.20	43	2861	2.617	ug/l	94
29) Tetrahydrofuran	7.53	42	4999	7.621	ug/l	94
31) Cyclohexane	7.94	56	6428	1.134	ug/l #	1
36) 1,1-Dichloropropene	7.95	75	21577	4.892	ug/l #	52
38) Carbon Tetrachloride	7.95	117	25690	6.729	ug/l #	16
41) Methacrylonitrile	7.53	41	3252	2.289	ug/l #	54
76) 1,2,3-Trichloropropane	12.62	75	72943	75.264	ug/l #	100
81) trans-1,4-Dichloro-2-buten	12.62	75	72943	165.018	ug/l #	6
95) Naphthalene	15.36	128	2457	4.919	ug/l #	91

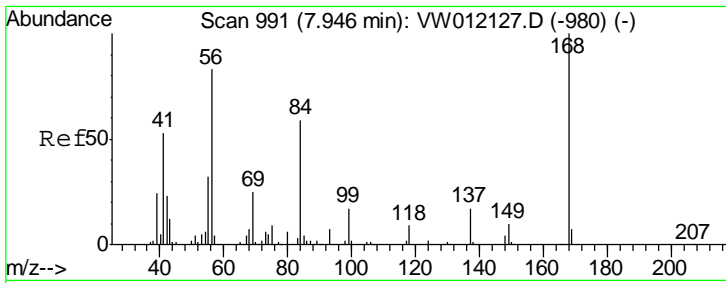
(#) = qualifier out of range (m) = manual integration (+) = signals summed

Data Path : Z:\VOASRV\HPCHEM1\MSVOA_W\DATA\VW090219\
 Data File : VW012518.D
 Acq On : 03 Sep 2019 00:40
 Operator : SY/VA
 Sample : K4544-04
 Misc : 4.85G/5ML/MSVOA_W/SOIL
 ALS Vial : 1 Sample Multiplier: 1

Instrument :
 MSVOA_W
 Client Sampled :
 T16-17-B3-(0)

Quant Time: Sep 03 07:45:05 2019
 Quant Method : Z:\VOASRV\HPCHEM1\MSVOA_W\METHOD\82W082319S.M
 Quant Title : SW846 8260
 QLast Update : Mon Aug 26 07:18:31 2019
 Response via : Initial Calibration

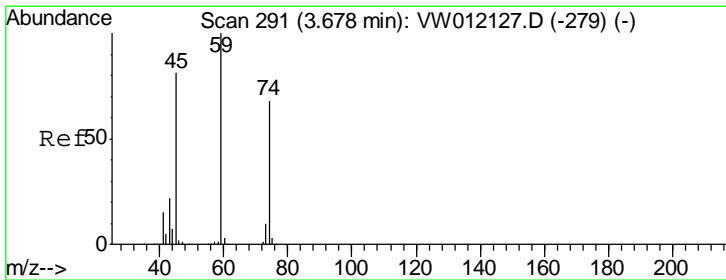
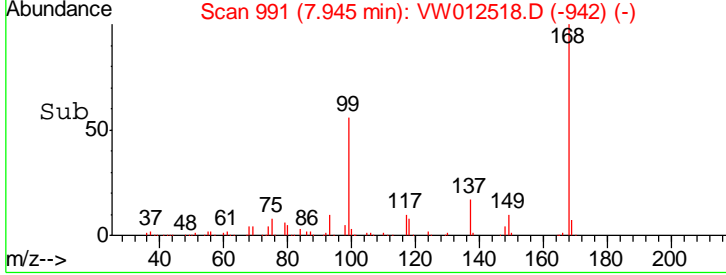
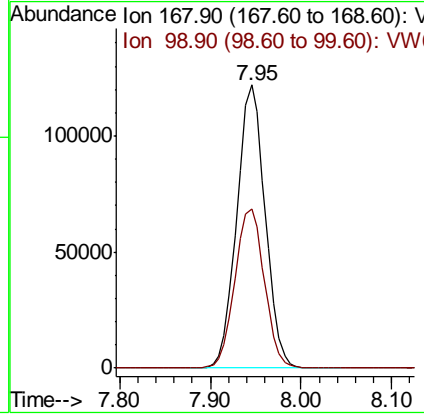
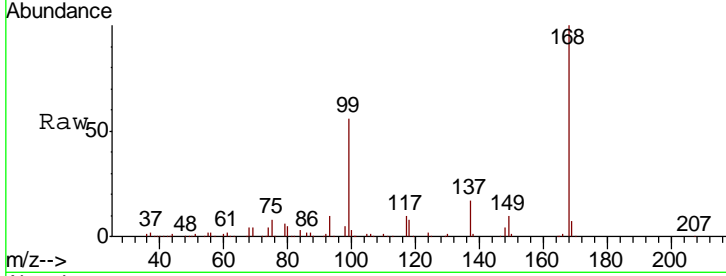




#1
 Pentafluorobenzene
 Concen: 50.000 ug/l
 RT: 7.95 min Scan# 991
 Delta R.T. -0.00 min
 Lab File: VW012518.D
 Acq: 03 Sep 2019 00:40

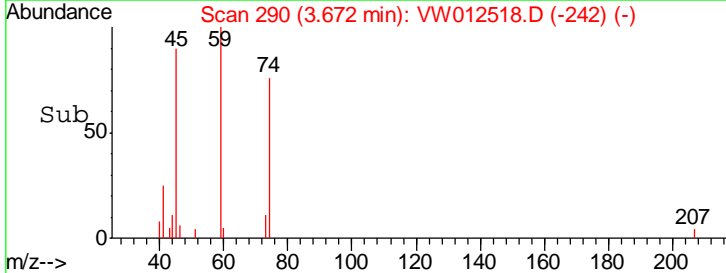
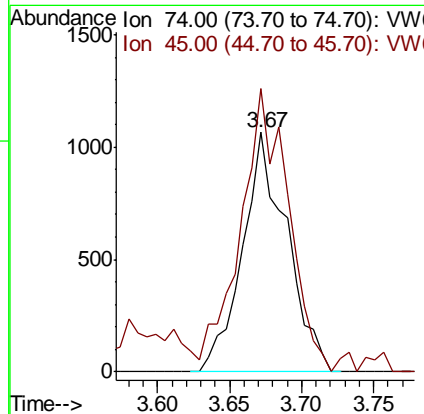
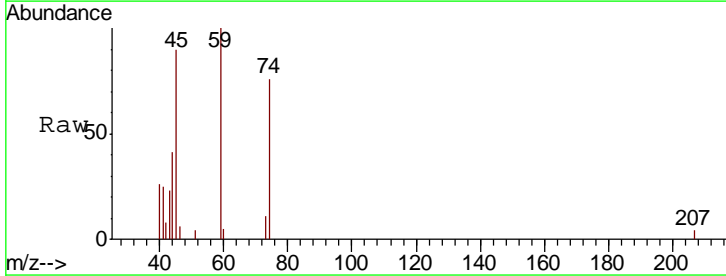
Instrument :
 MSVOA_W
ClientSampled :
 T16-17-B3-(0)

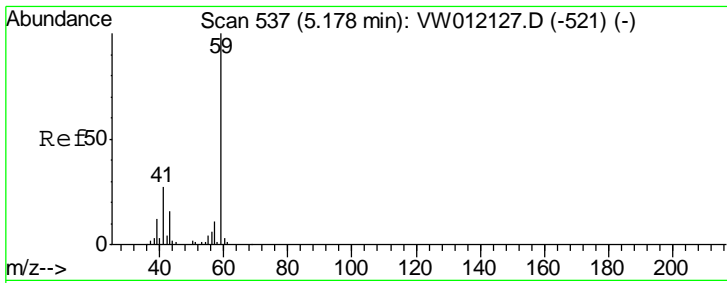
Tgt Ion: 168 Resp: 264777
 Ion Ratio Lower Upper
 168 100
 99 56.3 49.2 73.8



#8
 Diethyl Ether
 Concen: 1.544 ug/l
 RT: 3.67 min Scan# 290
 Delta R.T. -0.01 min
 Lab File: VW012518.D
 Acq: 03 Sep 2019 00:40

Tgt Ion: 74 Resp: 2275
 Ion Ratio Lower Upper
 74 100
 45 127.6 59.2 177.6

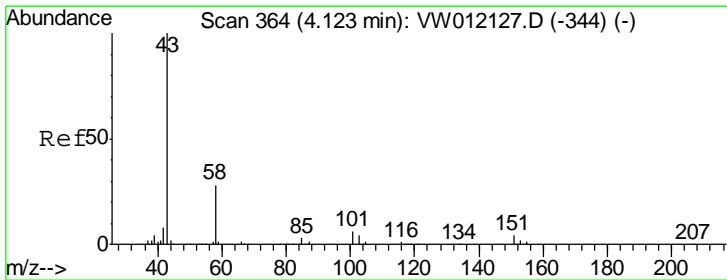
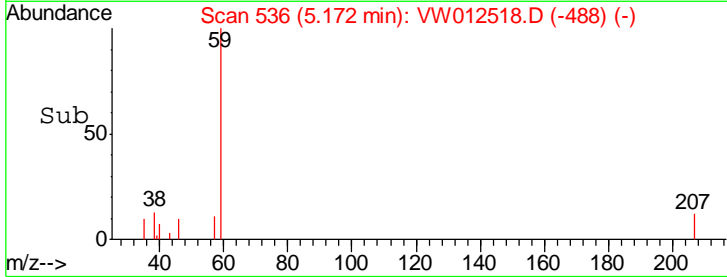
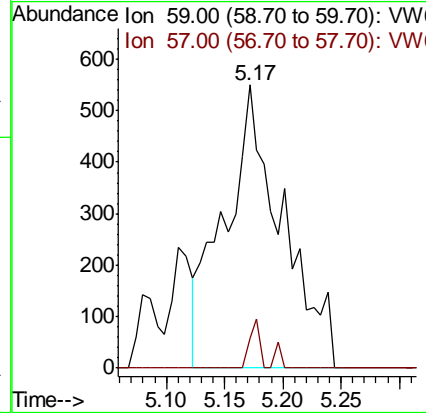
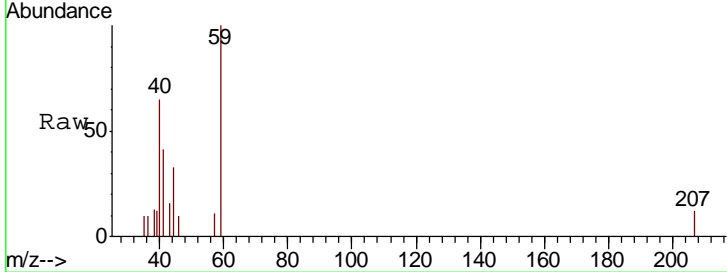




#11
 Tert butyl alcohol
 Concen: 9.962 ug/l
 RT: 5.17 min Scan# 536
 Delta R.T. -0.01 min
 Lab File: VW012518.D
 Acq: 03 Sep 2019 00:40

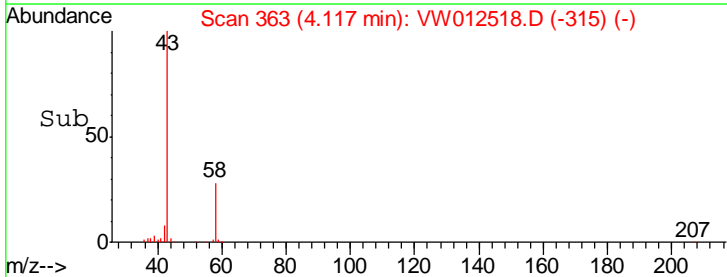
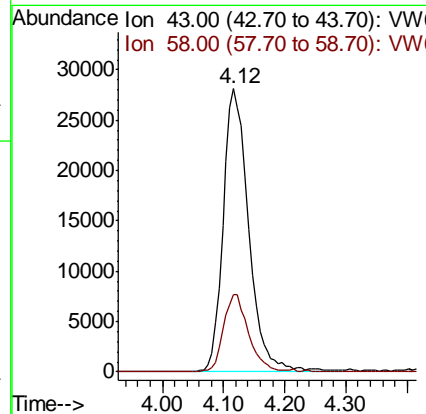
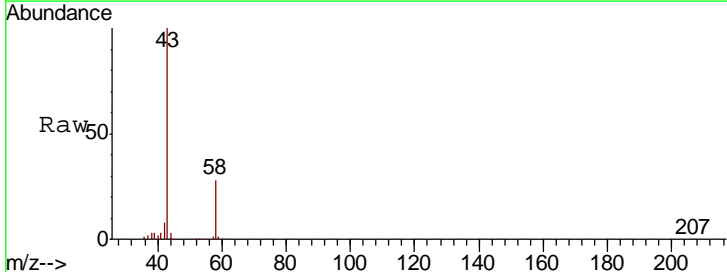
Instrument : MSVOA_W
 ClientSampled : T16-17-B3-(0)

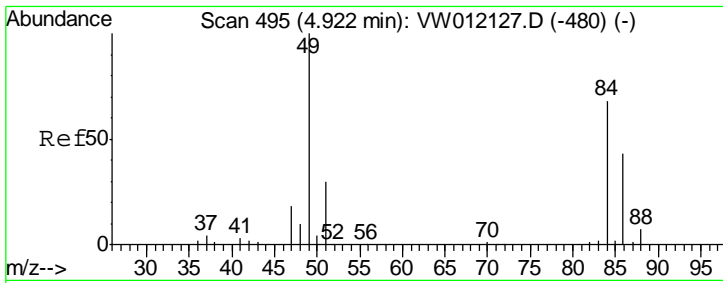
Tgt Ion: 59 Resp: 1887
 Ion Ratio Lower Upper
 59 100
 57 3.0 9.0 13.4#



#16
 Acetone
 Concen: 101.923 ug/l
 RT: 4.12 min Scan# 363
 Delta R.T. -0.01 min
 Lab File: VW012518.D
 Acq: 03 Sep 2019 00:40

Tgt Ion: 43 Resp: 82005
 Ion Ratio Lower Upper
 43 100
 58 27.5 22.4 33.6

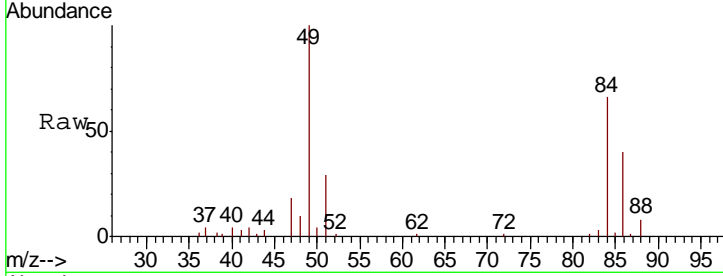




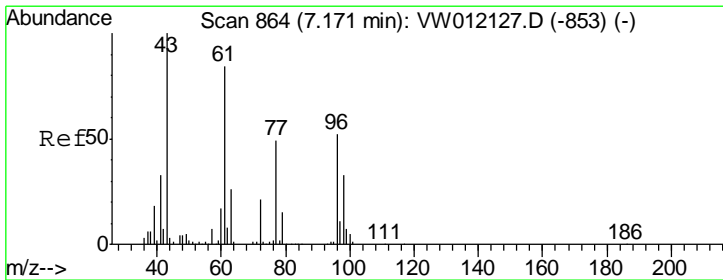
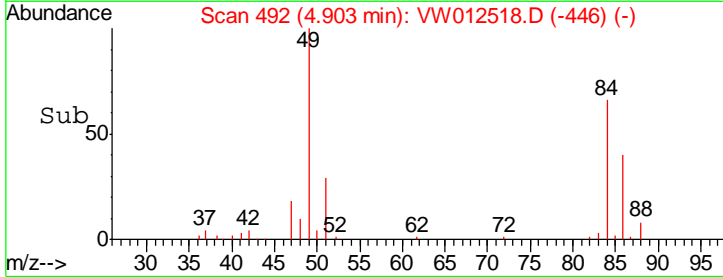
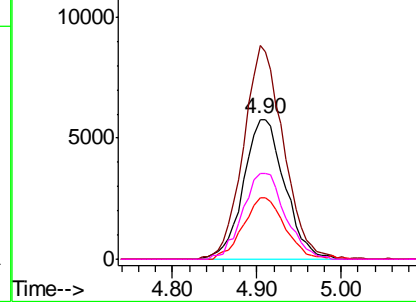
#20
 Methylene Chloride
 Concen: 6.323 ug/l
 RT: 4.90 min Scan# 492
 Delta R.T. -0.02 min
 Lab File: VW012518.D
 Acq: 03 Sep 2019 00:40

Instrument :
 MSVOA_W
 ClientSampled :
 T16-17-B3-(0)

Tgt Ion	Resp	Lower	Upper
84	19232		
49	152.6	117.8	176.8
51	44.1	35.6	53.4
86	61.5	51.2	76.8

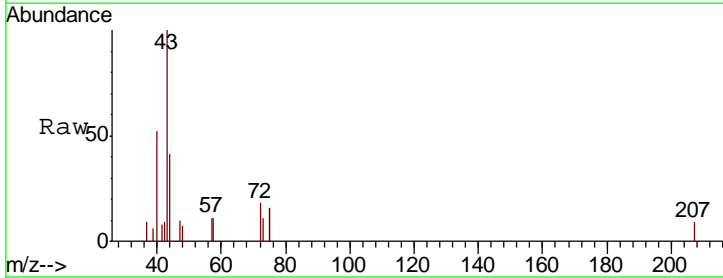


Abundance Ion 83.90 (83.60 to 84.60): VW
 Ion 48.90 (48.60 to 49.60): VW
 Ion 50.90 (50.60 to 51.60): VW
 Ion 85.90 (85.60 to 86.60): VW

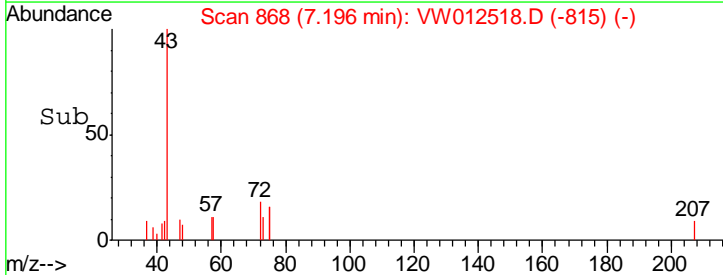
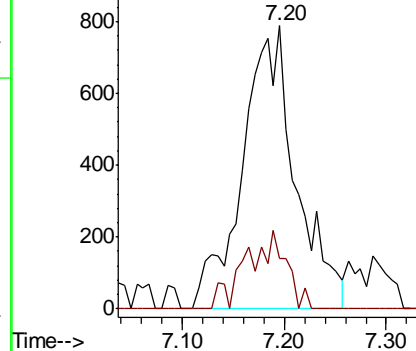


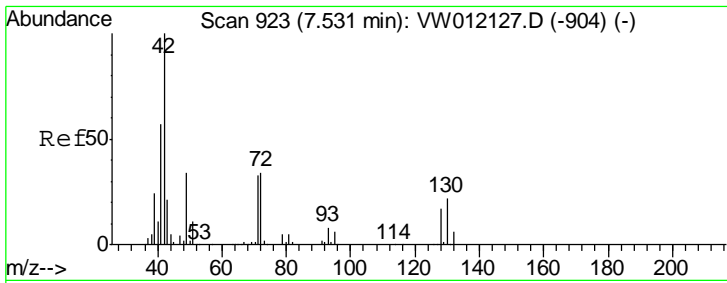
#25
 2-Butanone
 Concen: 2.617 ug/l
 RT: 7.20 min Scan# 868
 Delta R.T. 0.02 min
 Lab File: VW012518.D
 Acq: 03 Sep 2019 00:40

Tgt Ion	Resp	Lower	Upper
43	2861		
72	17.9	16.6	24.8



Abundance Ion 43.00 (42.70 to 43.70): VW
 Ion 72.00 (71.70 to 72.70): VW

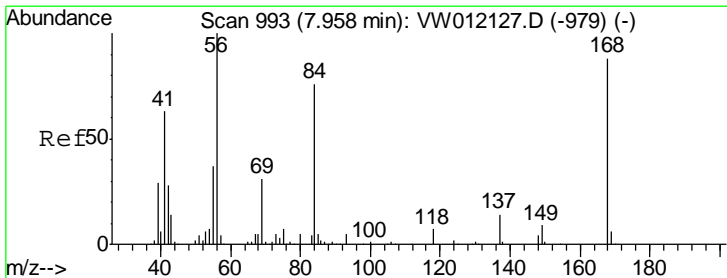
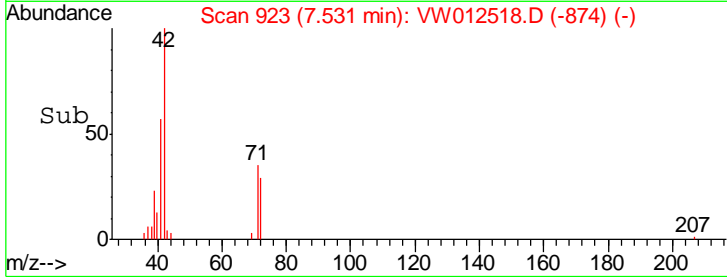
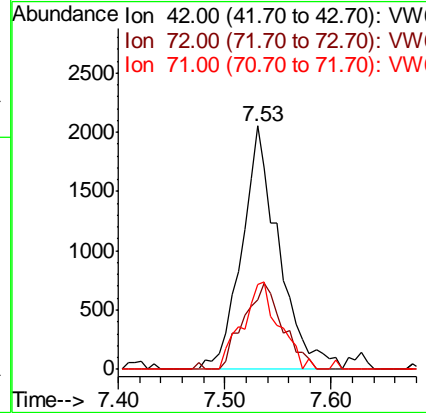
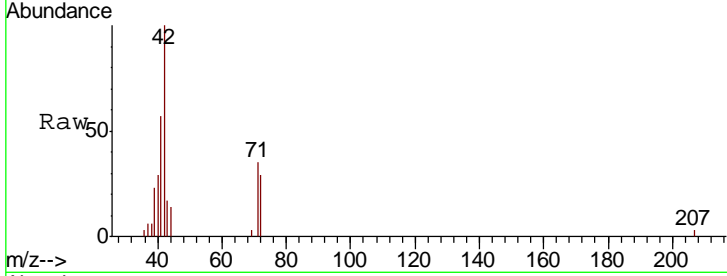




#29
 Tetrahydrofuran
 Concen: 7.621 ug/l
 RT: 7.53 min Scan# 923
 Delta R.T. -0.00 min
 Lab File: VW012518.D
 Acq: 03 Sep 2019 00:40

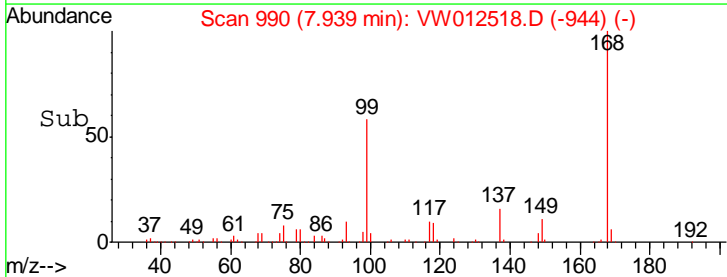
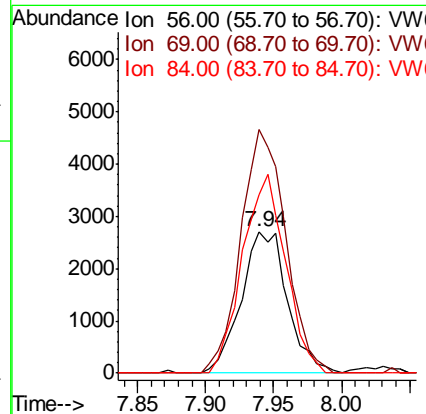
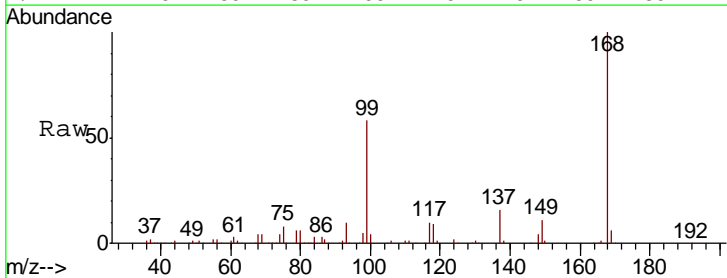
Instrument :
 MSVOA_W
 ClientSampled :
 T16-17-B3-(0)

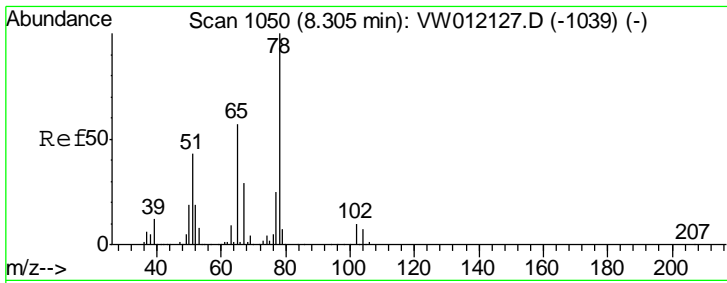
Tgt Ion	Resp	Lower	Upper
42	100		
72	37.3	27.3	40.9
71	35.7	25.5	38.3



#31
 Cyclohexane
 Concen: 1.134 ug/l
 RT: 7.94 min Scan# 990
 Delta R.T. -0.02 min
 Lab File: VW012518.D
 Acq: 03 Sep 2019 00:40

Tgt Ion	Resp	Lower	Upper
56	100		
69	172.1	24.9	37.3#
84	126.4	60.6	90.8#

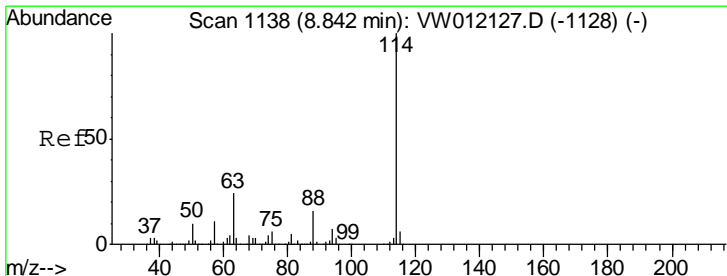
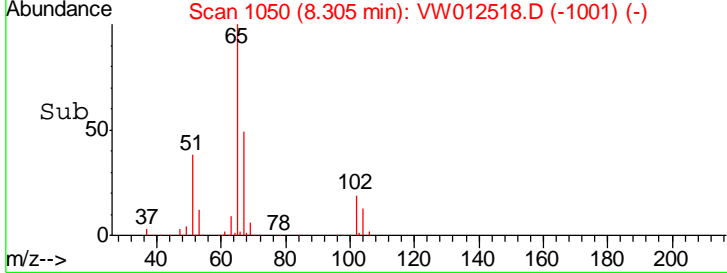
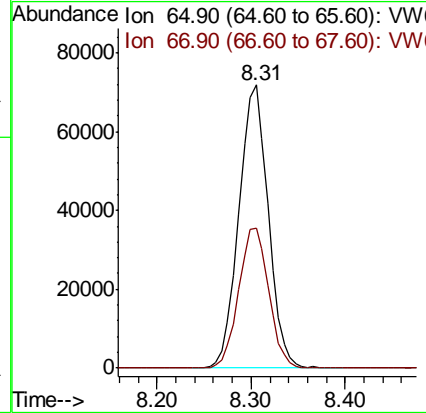
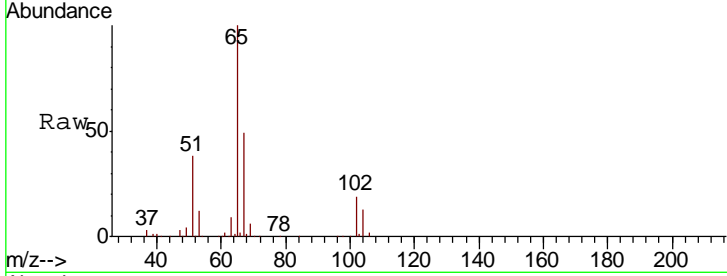




#33
 1,2-Dichloroethane-d4
 Concen: 49.626 ug/l
 RT: 8.31 min Scan# 1050
 Delta R.T. -0.00 min
 Lab File: VW012518.D
 Acq: 03 Sep 2019 00:40

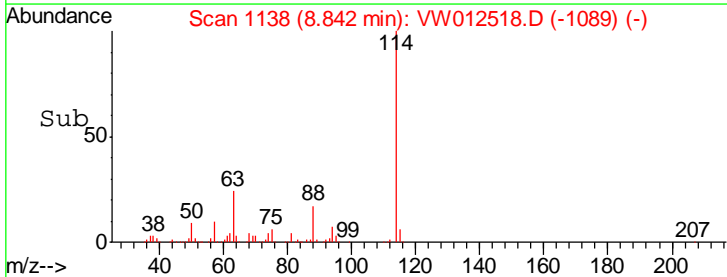
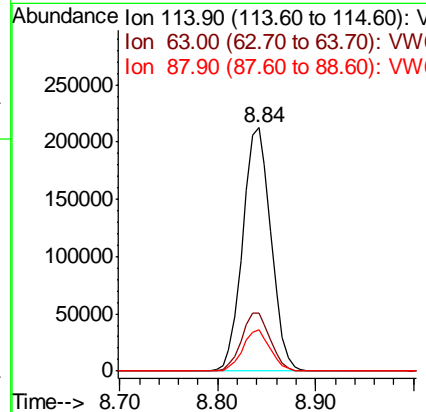
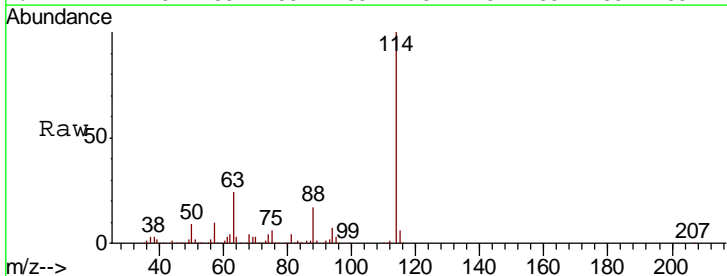
Instrument :
 MSVOA_W
ClientSampled :
 T16-17-B3-(0)

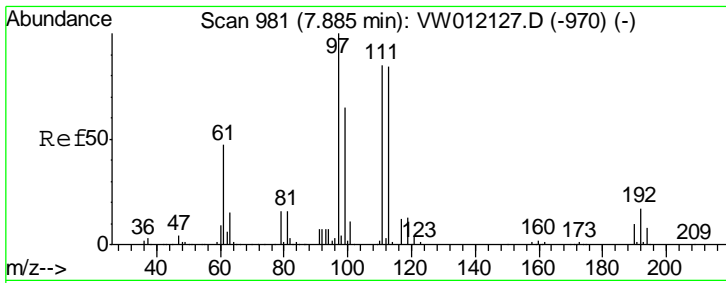
Tgt Ion	Resp	Lower	Upper
65	156201		
67	50.8	0.0	102.6



#34
 1,4-Difluorobenzene
 Concen: 50.000 ug/l
 RT: 8.84 min Scan# 1138
 Delta R.T. -0.00 min
 Lab File: VW012518.D
 Acq: 03 Sep 2019 00:40

Tgt Ion	Resp	Lower	Upper
114	426858		
63	23.9	0.0	48.6
88	16.7	0.0	32.2

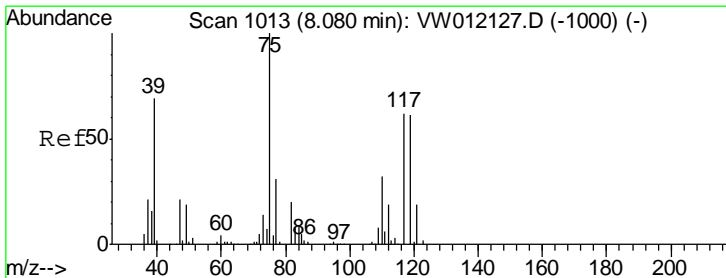
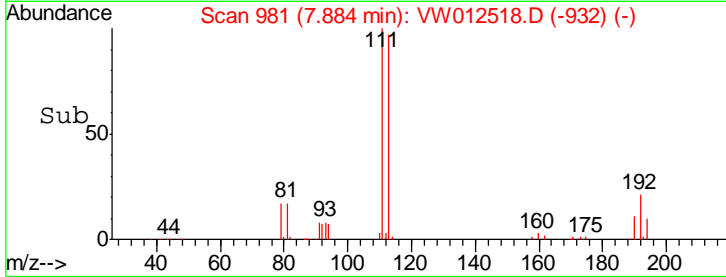
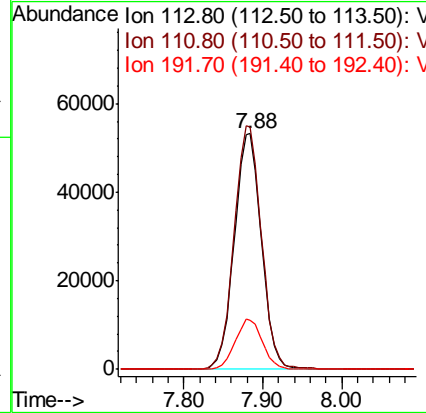
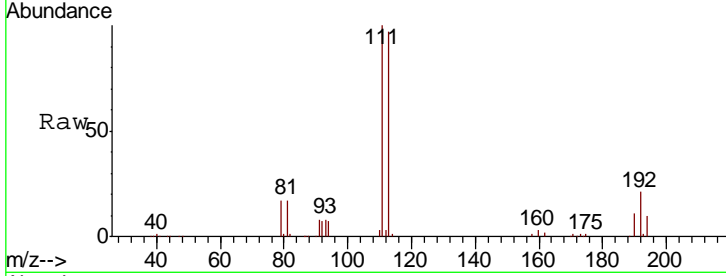




#35
 Dibromofluoromethane
 Concen: 49.822 ug/l
 RT: 7.88 min Scan# 981
 Delta R.T. -0.00 min
 Lab File: VW012518.D
 Acq: 03 Sep 2019 00:40

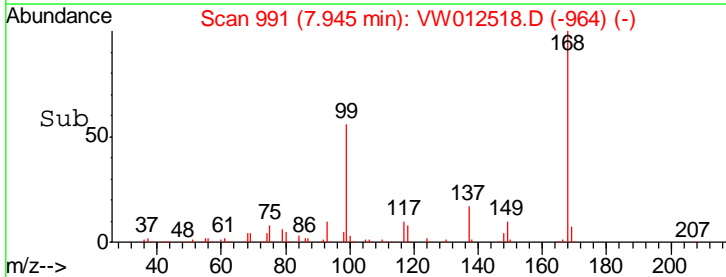
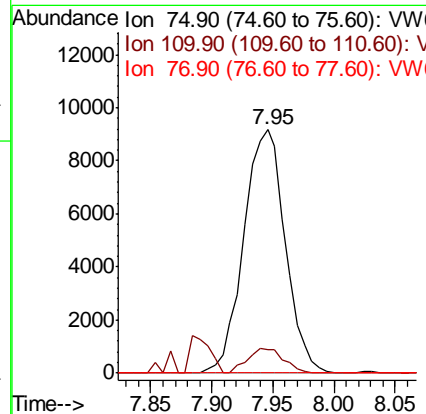
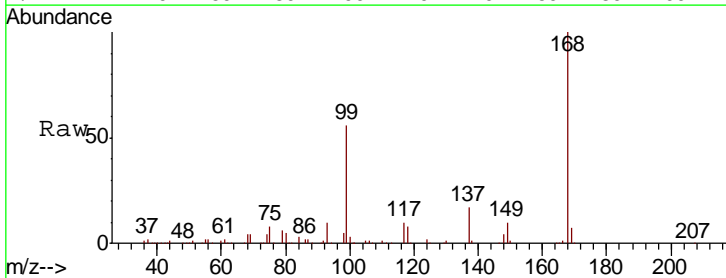
Instrument :
 MSVOA_W
 ClientSampled :
 T16-17-B3-(0)

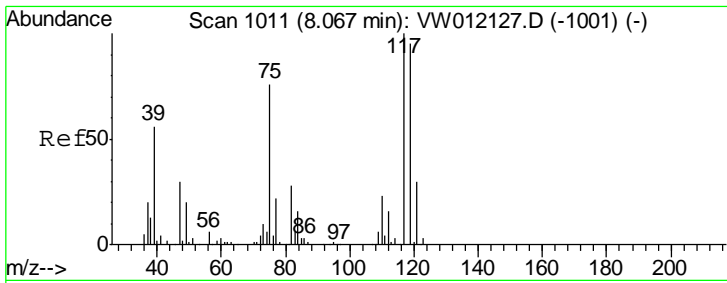
Tgt Ion	Resp	Lower	Upper
113	126942		
111	104.2	82.7	124.1
192	21.2	16.2	24.2



#36
 1,1-Dichloropropene
 Concen: 4.892 ug/l
 RT: 7.95 min Scan# 991
 Delta R.T. -0.13 min
 Lab File: VW012518.D
 Acq: 03 Sep 2019 00:40

Tgt Ion	Resp	Lower	Upper
75	21577		
110	8.8	15.6	46.8#
77	0.0	24.6	36.8#

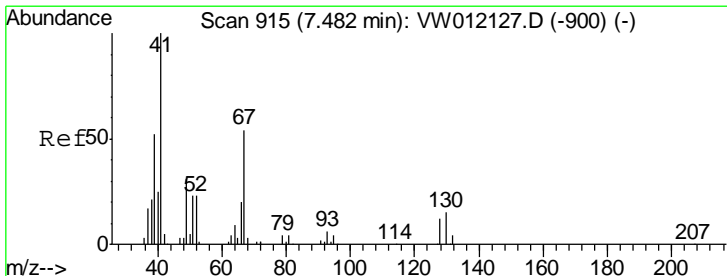
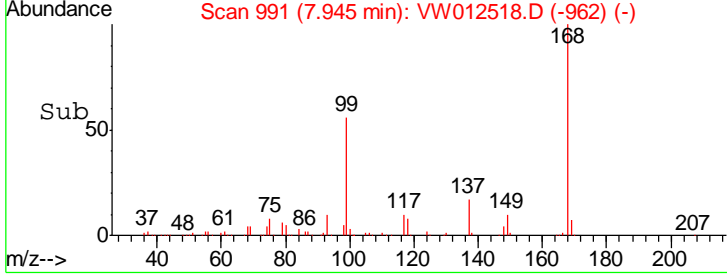
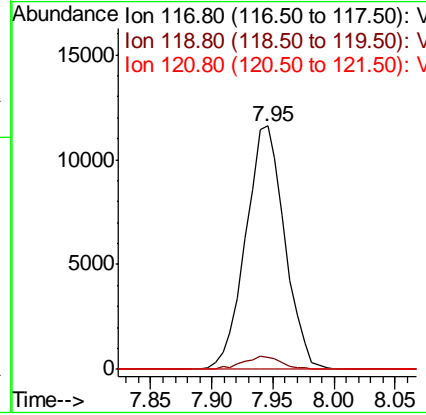
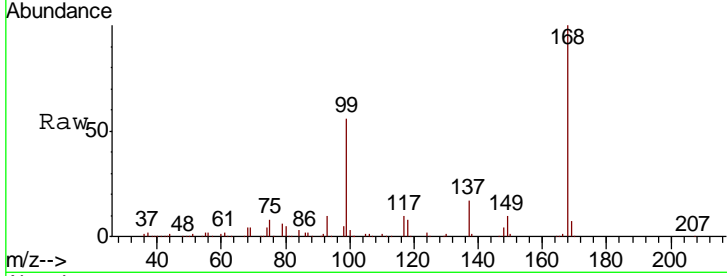




#38
 Carbon Tetrachloride
 Concen: 6.729 ug/l
 RT: 7.95 min Scan# 991
 Delta R.T. -0.12 min
 Lab File: VW012518.D
 Acq: 03 Sep 2019 00:40

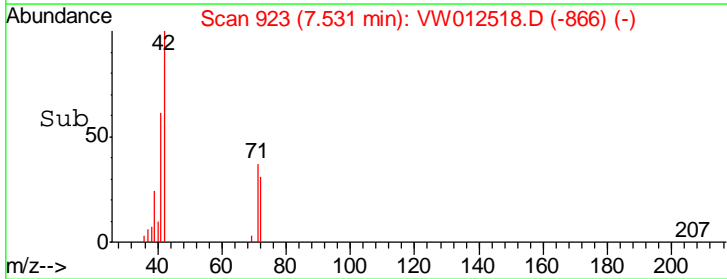
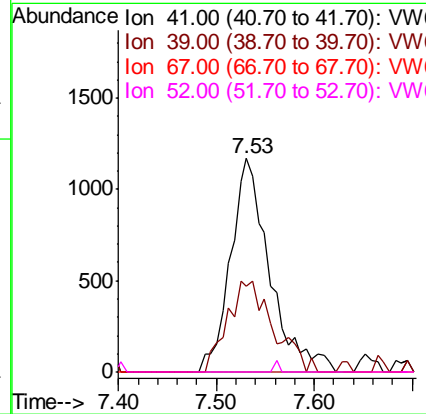
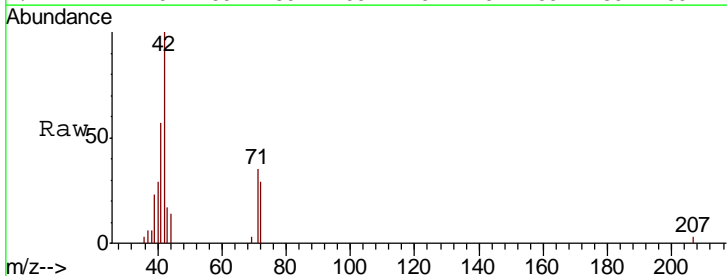
Instrument :
 MSVOA_W
ClientSampled :
 T16-17-B3-(0)

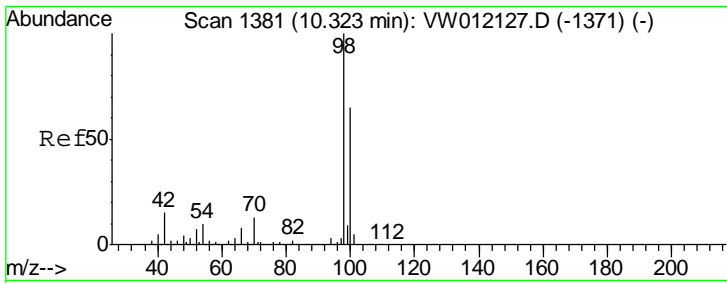
Tgt Ion	Resp	Lower	Upper
117	100		
119	4.9	76.2	114.2#
121	0.0	23.8	35.8#



#41
 Methacrylonitrile
 Concen: 2.289 ug/l
 RT: 7.53 min Scan# 923
 Delta R.T. 0.05 min
 Lab File: VW012518.D
 Acq: 03 Sep 2019 00:40

Tgt Ion	Resp	Lower	Upper
41	100		
39	49.8	45.8	68.8
67	0.0	46.2	69.4#
52	0.0	21.0	31.6#

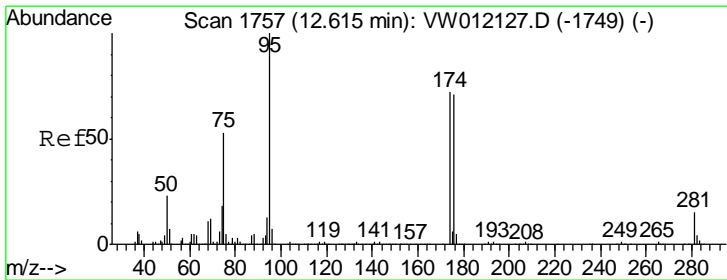
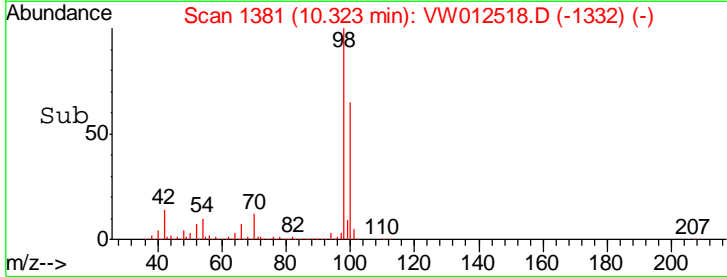
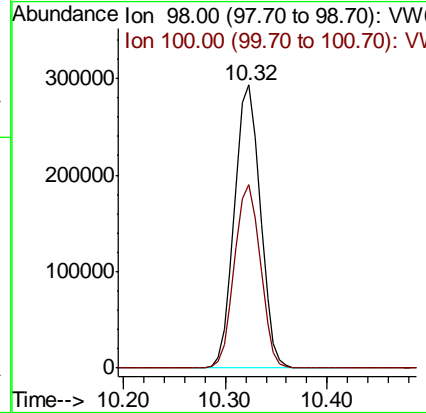
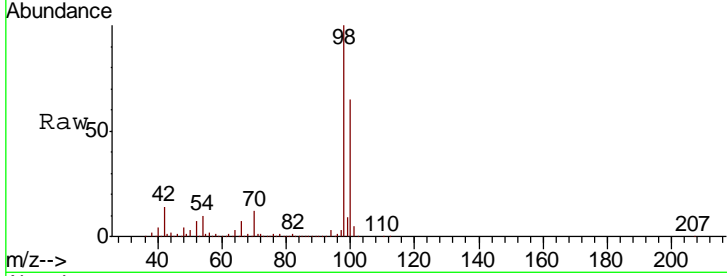




#50
 Toluene-d8
 Concen: 49.845 ug/l
 RT: 10.32 min Scan# 1381
 Delta R.T. -0.00 min
 Lab File: VW012518.D
 Acq: 03 Sep 2019 00:40

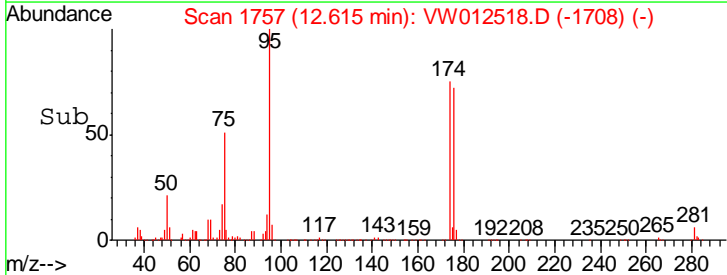
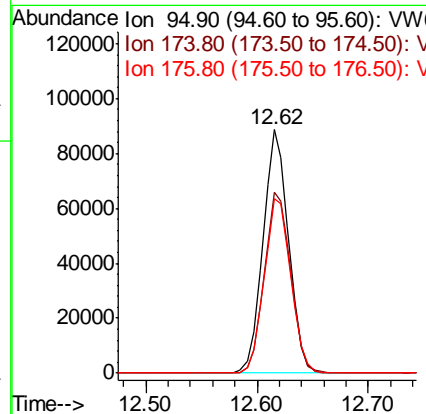
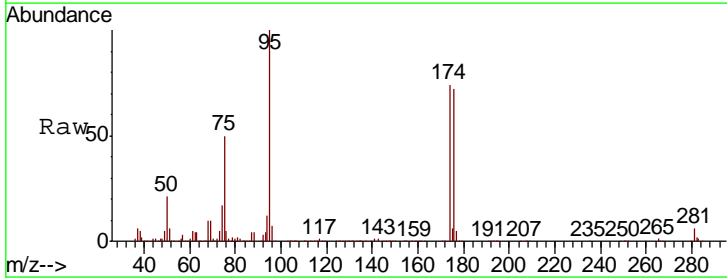
Instrument : MSVOA_W
 ClientSampled : T16-17-B3-(0)

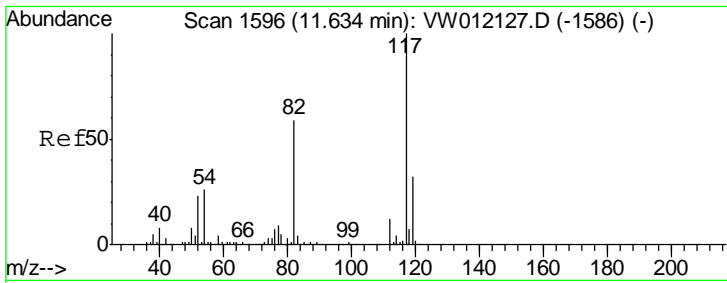
Tgt Ion: 98 Resp: 514958
 Ion Ratio Lower Upper
 98 100
 100 65.0 52.4 78.6



#62
 4-Bromofluorobenzene
 Concen: 38.929 ug/l
 RT: 12.62 min Scan# 1757
 Delta R.T. -0.00 min
 Lab File: VW012518.D
 Acq: 03 Sep 2019 00:40

Tgt Ion: 95 Resp: 141768
 Ion Ratio Lower Upper
 95 100
 174 76.8 0.0 150.8
 176 74.8 0.0 148.6

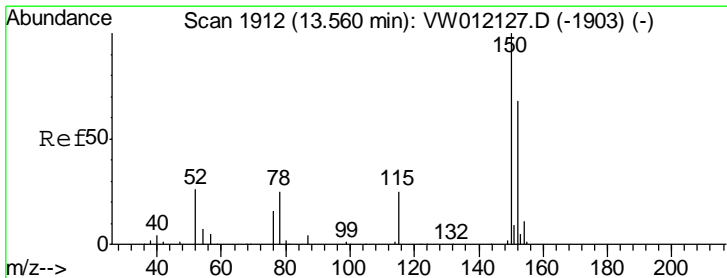
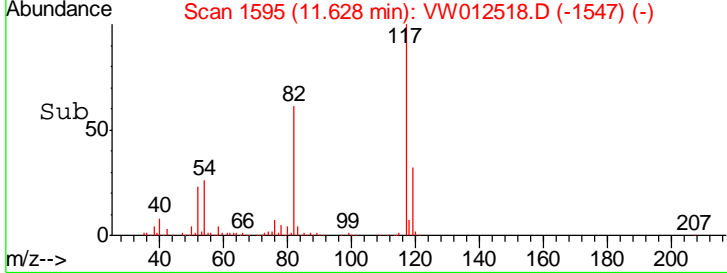
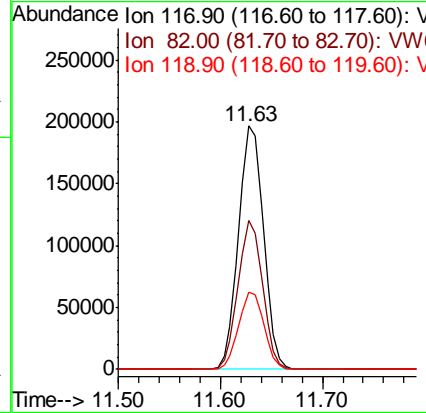
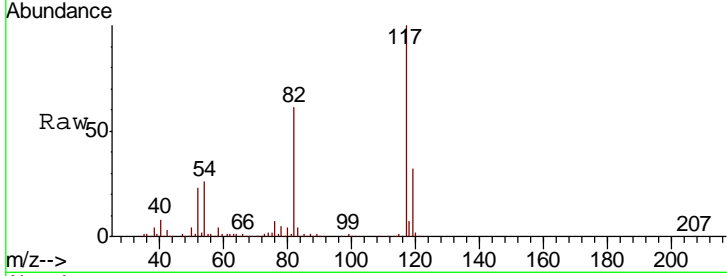




#63
 Chlorobenzene-d5
 Concen: 50.000 ug/l
 RT: 11.63 min Scan# 1595
 Delta R.T. -0.01 min
 Lab File: VW012518.D
 Acq: 03 Sep 2019 00:40

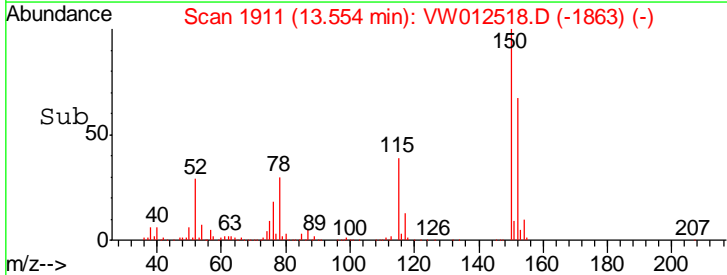
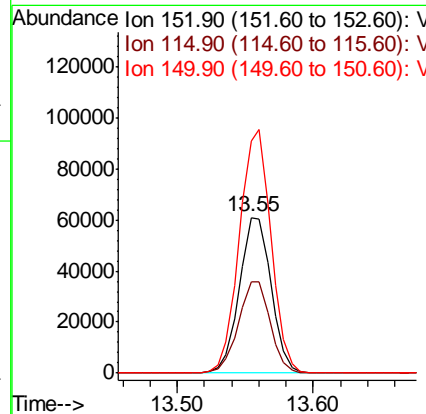
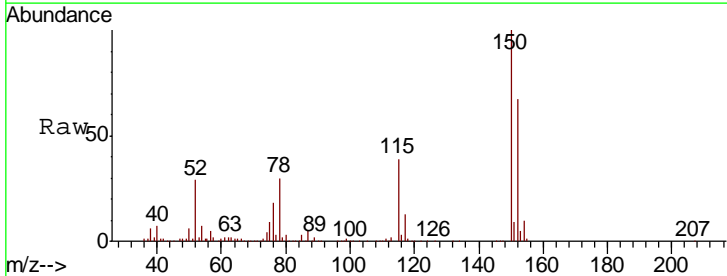
Instrument :
 MSVOA_W
 ClientSampled :
 T16-17-B3-(0)

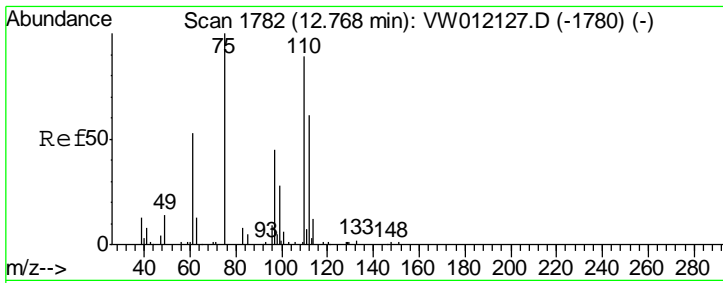
Tgt Ion	Resp	Lower	Upper
117	334162		
82	61.0	47.4	71.2
119	31.6	25.4	38.2



#72
 1,4-Dichlorobenzene-d4
 Concen: 50.000 ug/l
 RT: 13.55 min Scan# 1911
 Delta R.T. -0.01 min
 Lab File: VW012518.D
 Acq: 03 Sep 2019 00:40

Tgt Ion	Resp	Lower	Upper
152	99511		
115	59.0	30.1	90.3
150	155.3	0.0	345.8

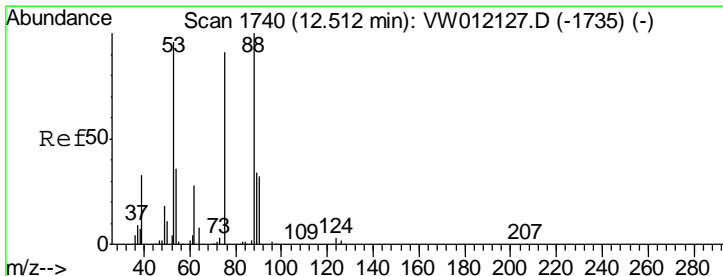
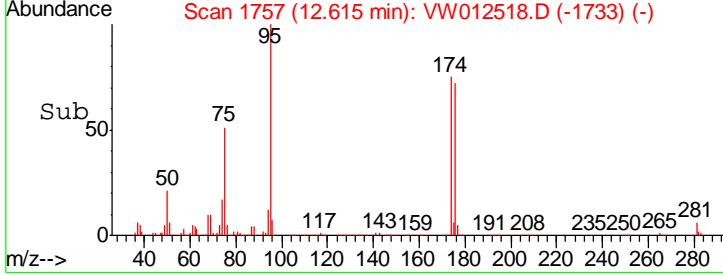
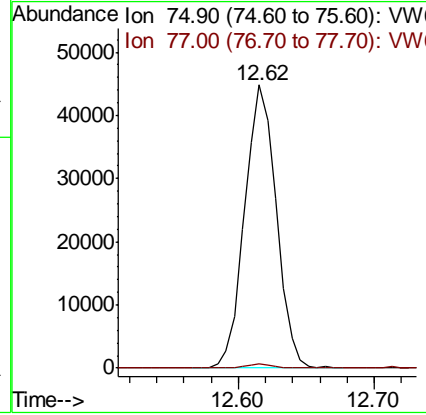
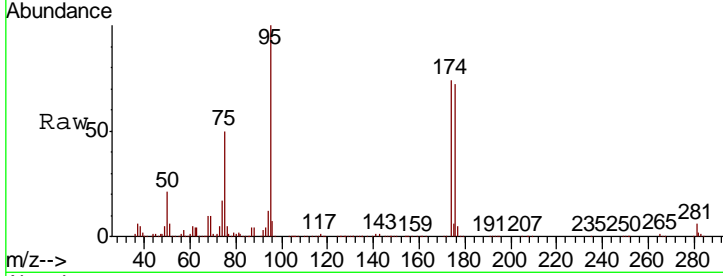




#76
 1,2,3-Trichloropropane
 Concen: 75.264 ug/l
 RT: 12.62 min Scan# 1757
 Delta R.T. -0.15 min
 Lab File: VW012518.D
 Acq: 03 Sep 2019 00:40

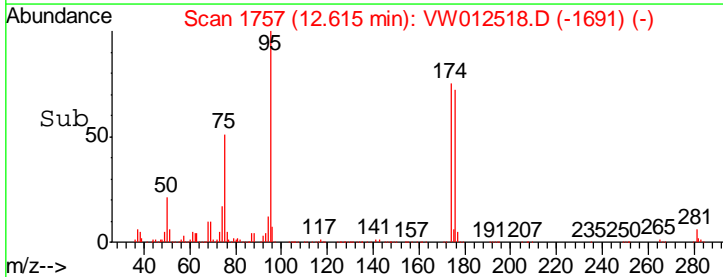
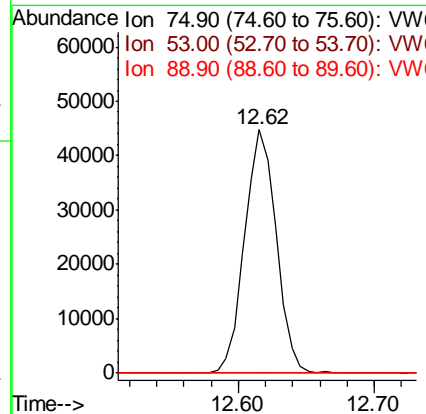
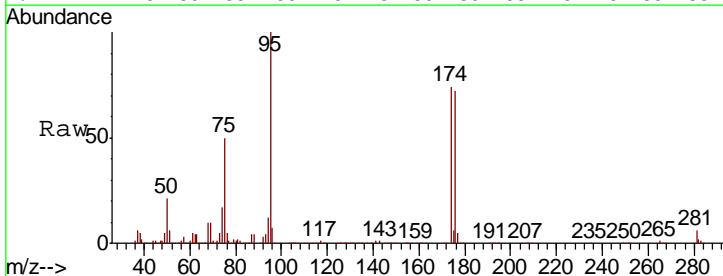
Instrument : MSVOA_W
 ClientSampled : T16-17-B3-(0)

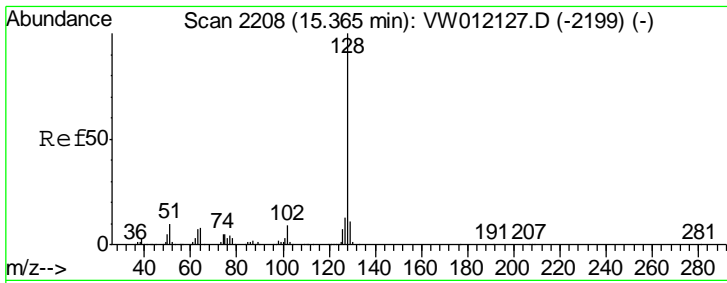
Tgt Ion	Resp	Lower	Upper
75	100		
77	1.2	0.0	0.0#



#81
 trans-1,4-Dichloro-2-butene
 Concen: 165.018 ug/l
 RT: 12.62 min Scan# 1757
 Delta R.T. 0.10 min
 Lab File: VW012518.D
 Acq: 03 Sep 2019 00:40

Tgt Ion	Resp	Lower	Upper
75	100		
53	0.2	89.4	134.0#
89	0.0	34.5	51.7#





#95
 Naphthalene
 Concen: 4.919 ug/l
 RT: 15.36 min Scan# 2208
 Delta R.T. 0.00 min
 Lab File: VW012518.D
 Acq: 03 Sep 2019 00:40

Instrument :
 MSVOA_W
ClientSampled :
 T16-17-B3-(0)

Tgt Ion	Resp	Lower	Upper
128	100		
127	17.5	10.7	16.1#
129	13.4	8.7	13.1#

