

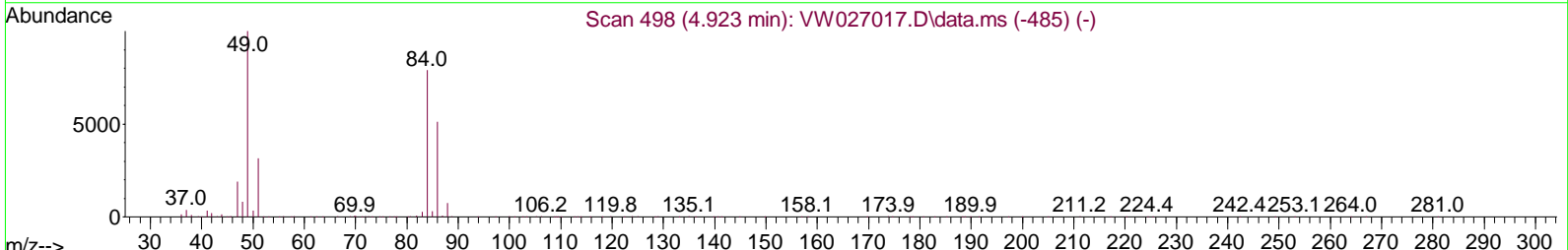
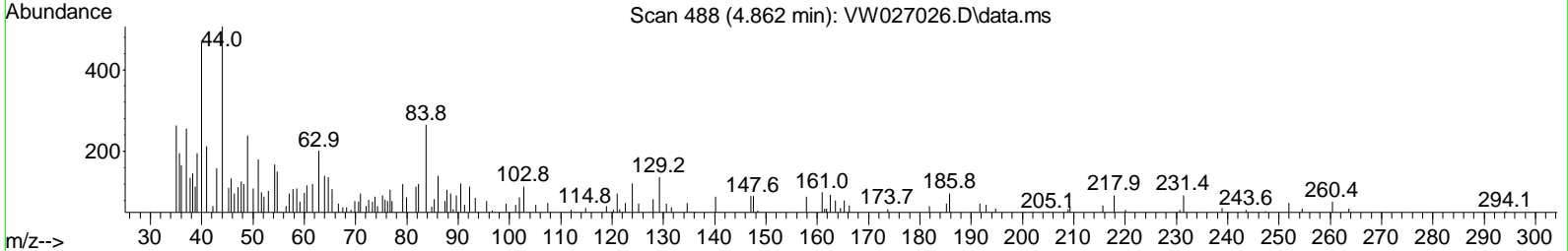
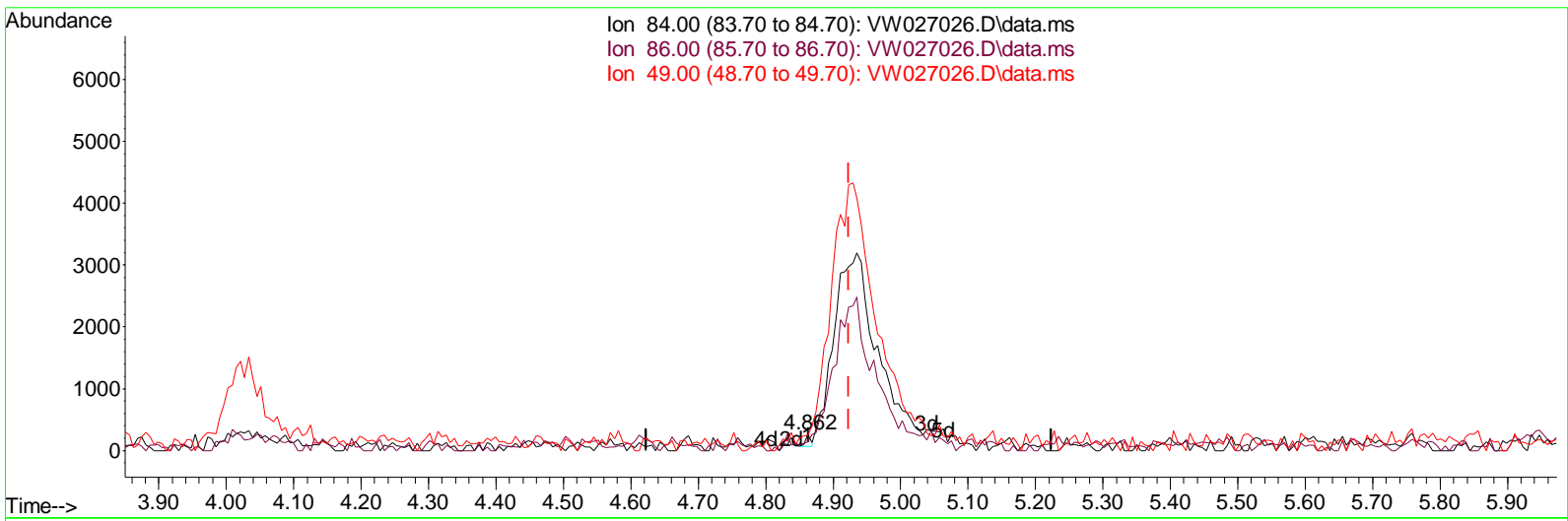
Data Path : Z:\voasrv\HPCHEM1\MSVOA\_W\Data\VW090823\  
 Data File : VW027026.D  
 Acq On : 08 Sep 2023 15:30  
 Operator : SY/MD  
 Sample : 04332-02RE  
 Mi sc : 2.25g/10mL/MSVOA\_W/SOIL  
 ALS Vial : 1 Sample Multiplier: 1

**Instrument :**  
 MSVOA\_W  
**ClientSampleId :**  
 COACORE

**Manual Integrations APPROVED**

Reviewed By : Semsettin Yesilyurt 09/11/2023  
 Supervised By : Mahesh Dadoda 09/11/2023

Quant Time: Sep 09 03:02:08 2023  
 Quant Method : Z:\voasrv\HPCHEM1\MSVOA\_W\Method\SFAMLM090523SMA.M  
 Quant Title : SFAM01.0  
 QLast Update : Sat Sep 09 02:59:49 2023  
 Response via : Initial Calibration



TIC: VW027026.D\data.ms

(16) Methylene chloride (T)

4.862min (-0.061) 0.01 ug/L

response	107	
Ion	Exp%	Act%
84.00	100.00	100.00
86.00	63.00	52.45
49.00	117.30	90.19
0.00	0.00	0.00

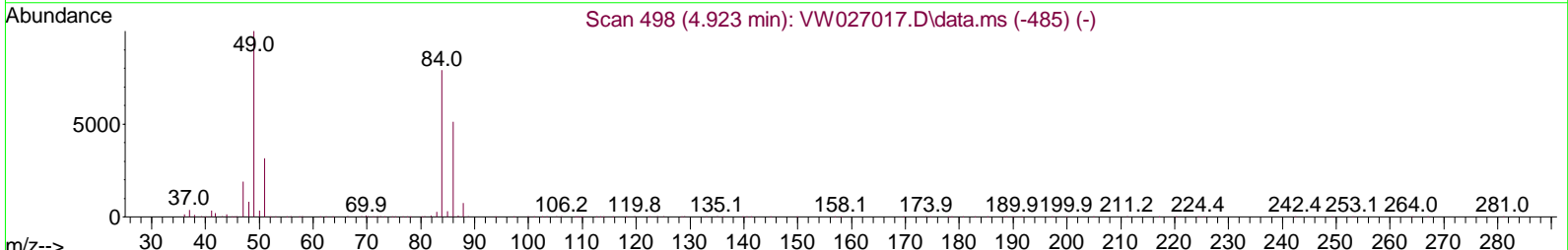
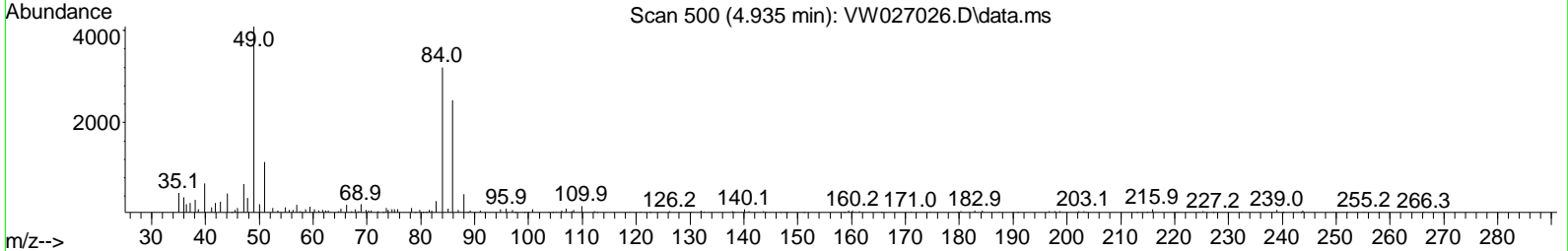
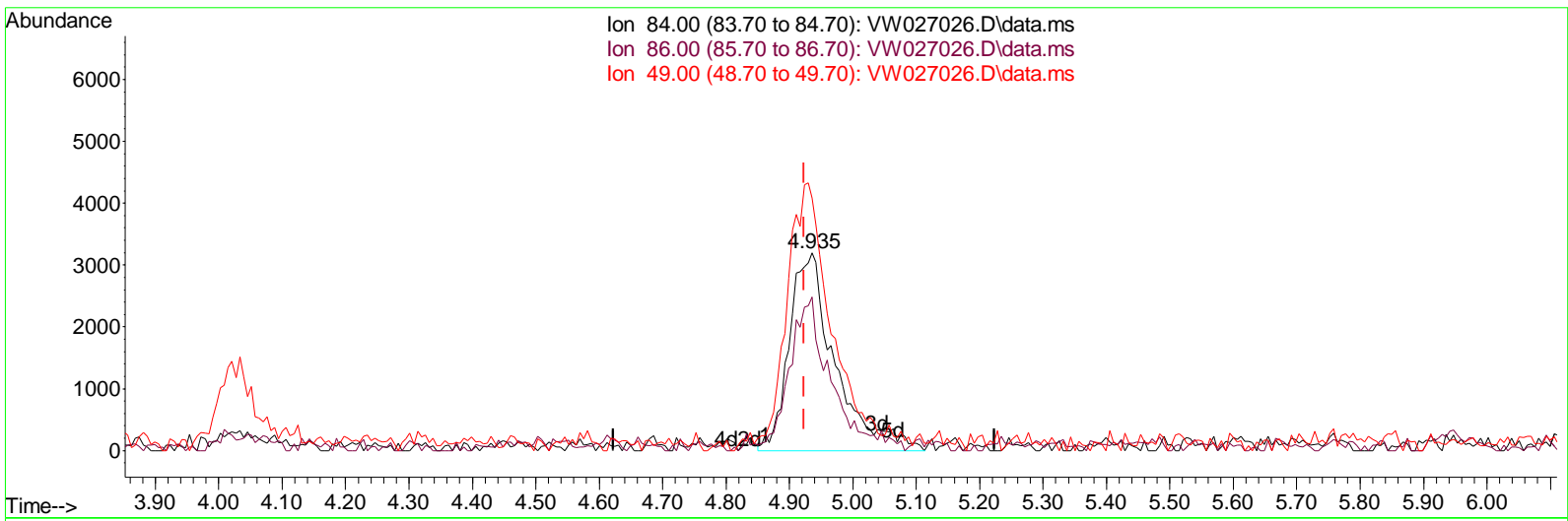
Data Path : Z:\voasrv\HPCHEM1\MSVOA\_W\Data\VW090823\  
 Data File : VW027026.D  
 Acq On : 08 Sep 2023 15:30  
 Operator : SY/MD  
 Sample : 04332-02RE  
 Mi sc : 2.25g/10mL/MSVOA\_W/SOIL  
 ALS Vial : 1 Sample Multiplier: 1

**Instrument :**  
 MSVOA\_W  
**ClientSampleId :**  
 COACORE

**Manual IntegrationsAPPROVED**

Reviewed By :Semsettin Yesilyurt 09/11/2023  
 Supervised By :Mahesh Dadoda 09/11/2023

Quant Time: Sep 09 03:02:08 2023  
 Quant Method : Z:\voasrv\HPCHEM1\MSVOA\_W\Method\SFAMLM090523SMA.M  
 Quant Title : SFAM01.0  
 QLast Update : Sat Sep 09 02:59:49 2023  
 Response via : Initial Calibration



TIC: VW027026.D\data.ms

(16) Methylene chloride (T)

4.935min (+ 0.012) 1.39 ug/L m

response 16006

Ion	Exp%	Act%
84.00	100.00	100.00
86.00	63.00	77.44
49.00	117.30	127.63
0.00	0.00	0.00

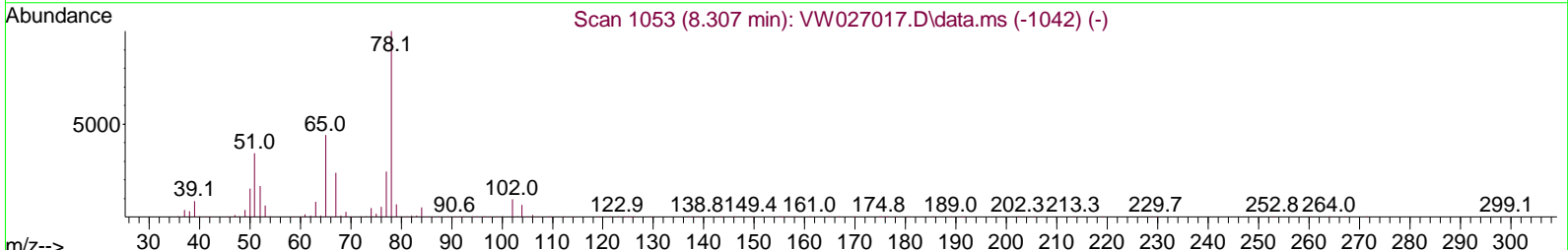
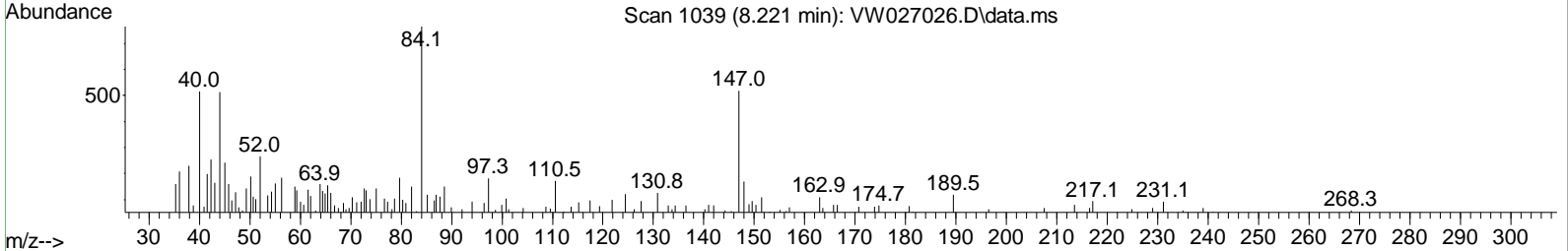
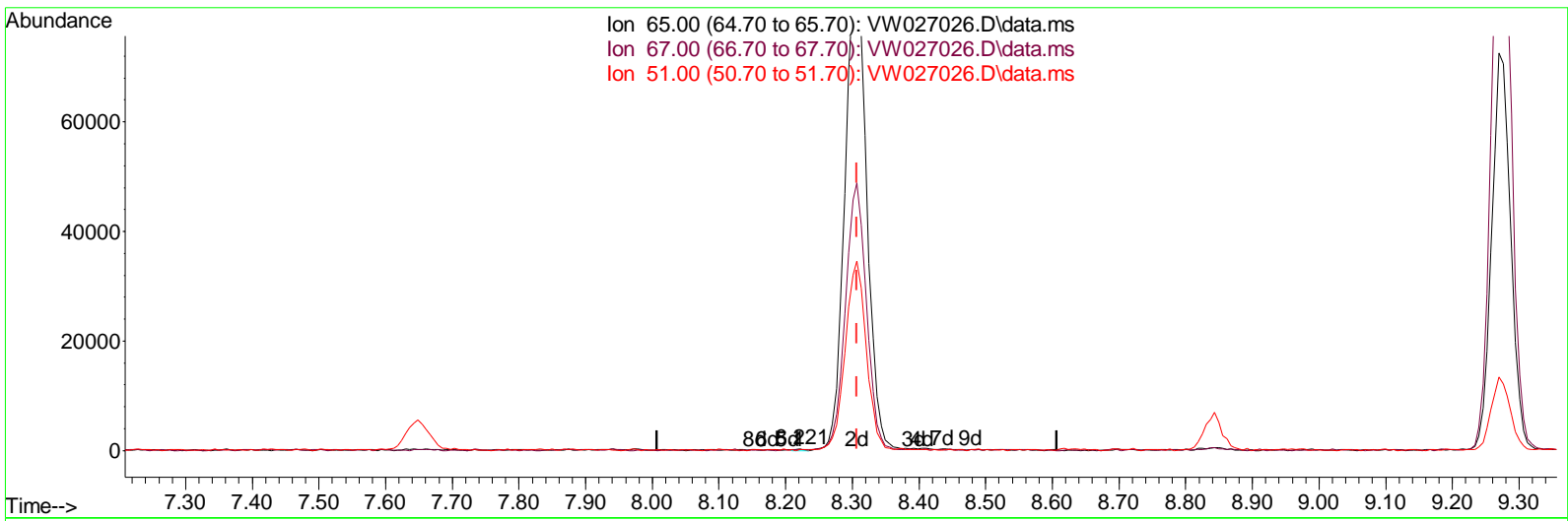
Data Path : Z:\voasrv\HPCHEM1\MSVOA\_W\Data\VW090823\  
 Data File : VW027026.D  
 Acq On : 08 Sep 2023 15:30  
 Operator : SY/MD  
 Sample : 04332-02RE  
 Mi sc : 2.25g/10mL/MSVOA\_W/SOIL  
 ALS Vial : 1 Sample Multiplier: 1

**Instrument :**  
 MSVOA\_W  
**ClientSampleId :**  
 COACORE

**Manual IntegrationsAPPROVED**

Reviewed By :Semsettin Yesilyurt 09/11/2023  
 Supervised By :Mahesh Dadoda 09/11/2023

Quant Time: Sep 09 03:02:08 2023  
 Quant Method : Z:\voasrv\HPCHEM1\MSVOA\_W\Method\SFAMLM090523SMA.M  
 Quant Title : SFAM01.0  
 QLast Update : Sat Sep 09 02:59:49 2023  
 Response via : Initial Calibration



TIC: VW027026.D\data.ms

(26) 1,2-Dichloroethane-d4 (S)

8.221min (-0.085) 0.02 ug/L

response	214	
Ion	Exp%	Act%
65.00	100.00	100.00
67.00	54.50	53.74
51.00	110.30	82.71
0.00	0.00	0.00

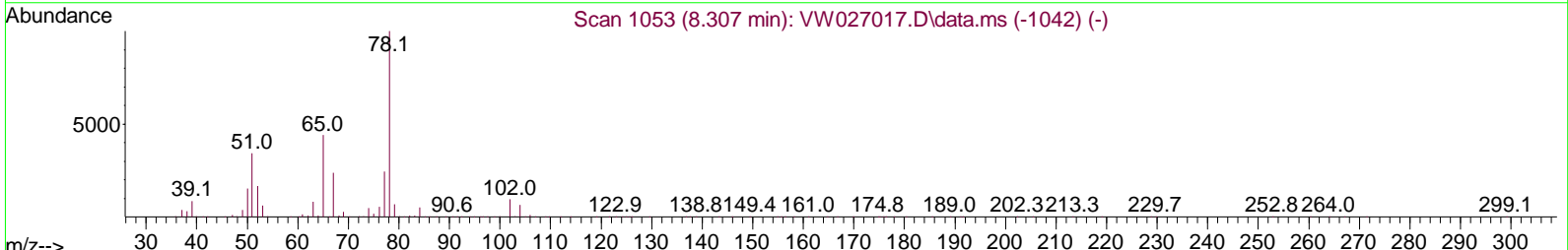
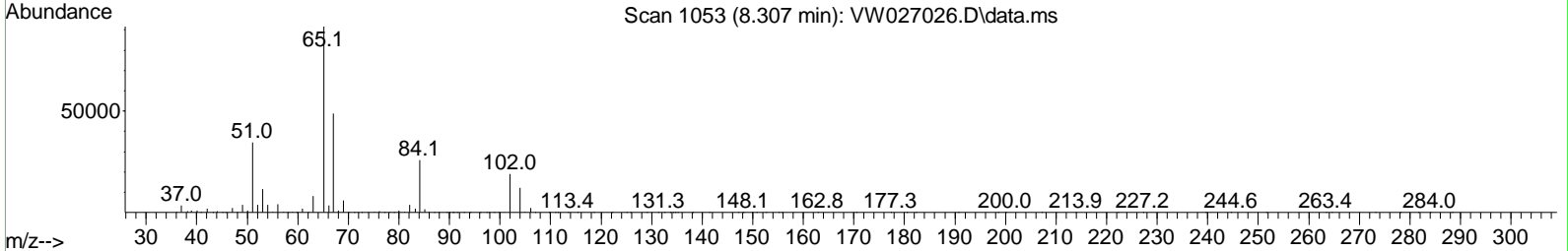
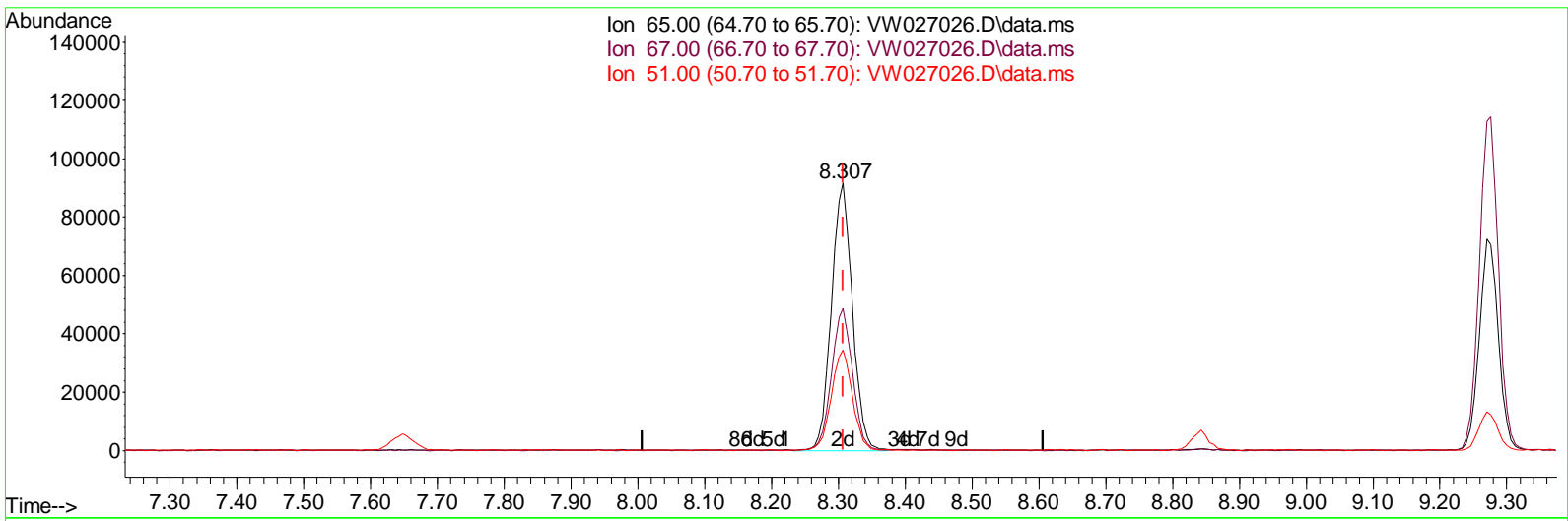
Data Path : Z:\voasrv\HPCHEM1\MSVOA\_W\Data\VW090823\  
 Data File : VW027026.D  
 Acq On : 08 Sep 2023 15:30  
 Operator : SY/MD  
 Sample : 04332-02RE  
 Misc : 2.25g/10mL/MSVOA\_W/SOIL  
 ALS Vial : 1 Sample Multiplier: 1

**Instrument :**  
 MSVOA\_W  
**ClientSampleId :**  
 COACORE

**Manual Integrations APPROVED**

Reviewed By : Semsettin Yesilyurt 09/11/2023  
 Supervised By : Mahesh Dadoda 09/11/2023

Quant Time: Sep 09 03:02:08 2023  
 Quant Method : Z:\voasrv\HPCHEM1\MSVOA\_W\Method\SFAMLM090523SMA.M  
 Quant Title : SFAM01.0  
 QLast Update : Sat Sep 09 02:59:49 2023  
 Response via : Initial Calibration



TIC: VW027026.D\data.ms

(26) 1,2-Dichloroethane-d4 (S)

8.307min ( 0.000) 21.58 ug/L m

response 200699

Ion	Exp%	Act%
65.00	100.00	100.00
67.00	54.50	0.06#
51.00	110.30	0.09#
0.00	0.00	0.00

Data Path : Z:\voasrv\HPCHEM1\MSVOA\_W\Data\W090823\  
 Data File : W027026.D  
 Acq On : 08 Sep 2023 15:30  
 Operator : SY/MD  
 Sample : 04332-02RE  
 Mi sc : 2.25g/10mL/MSVOA\_W/SOIL  
 ALS Vial : 1 Sample Multiplier: 1

**Instrument :**  
 MSVOA\_W  
**ClientSampleId :**  
 COACORE

**Manual IntegrationsAPPROVED**

Reviewed By :Semsettin Yesilyurt 09/11/2023  
 Supervised By :Mahesh Dadoda 09/11/2023

Quant Time: Sep 09 03:02:08 2023  
 Quant Method : Z:\voasrv\HPCHEM1\MSVOA\_W\Method\SFAMWLM090523SMA.M  
 Quant Title : SFAM01.0  
 QLast Update : Sat Sep 09 02:59:49 2023  
 Response via : Initial Calibration

Compound	R.T.	QI on	Response	Conc	Units	Dev(Min)
<b>Internal Standards</b>						
1) 1,4-Difluorobenzene	8.843	114	594616	25.000	ug/L	0.00
28) Chlorobenzene-d5	11.629	117	435646	25.000	ug/L	0.00
58) 1,4-Dichlorobenzene-d4	13.556	152	107151	25.000	ug/L	0.00
<b>System Monitoring Compounds</b>						
4) Vinyl Chloride-d3	2.363	65	161917	15.242	ug/L	0.00
Spike Amount 25.000	Range 30 - 150		Recovery =	60.960%		
7) Chloroethane-d5	2.893	69	162029	18.898	ug/L	0.00
Spike Amount 25.000	Range 30 - 150		Recovery =	75.600%		
11) 1,1-Dichloroethene-d2	4.027	65	57597	14.712	ug/L	0.00
Spike Amount 25.000	Range 45 - 110		Recovery =	58.840%		
21) 2-Butanone-d5	7.081	46	78420	38.311	ug/L	0.00
Spike Amount 50.000	Range 20 - 135		Recovery =	76.620%		
24) Chloroform-d	7.648	84	365703	20.668	ug/L	0.00
Spike Amount 25.000	Range 40 - 150		Recovery =	82.680%		
26) 1,2-Dichloroethane-d4	8.307	65	200699m	21.580	ug/L	0.00
Spike Amount 25.000	Range 70 - 130		Recovery =	86.320%		
32) Benzene-d6	8.270	84	661174	23.138	ug/L	0.00
Spike Amount 25.000	Range 20 - 135		Recovery =	92.560%		
36) 1,2-Dichloropropane-d6	9.276	67	227882	27.165	ug/L	0.00
Spike Amount 25.000	Range 70 - 120		Recovery =	108.640%		
41) Toluene-d8	10.325	98	478668	18.502	ug/L	0.00
Spike Amount 25.000	Range 30 - 130		Recovery =	74.000%		
43) trans-1,3-Dichloroprop...	10.581	79	40103	12.319	ug/L	0.00
Spike Amount 25.000	Range 30 - 135		Recovery =	49.280%		
47) 2-Hexanone-d5	10.922	63	14294	18.251	ug/L	0.00
Spike Amount 50.000	Range 20 - 135		Recovery =	36.500%		
56) 1,1,2,2-Tetrachloroeth...	12.690	84	158599	24.362	ug/L	0.00
Spike Amount 25.000	Range 45 - 120		Recovery =	97.440%		
66) 1,2-Dichlorobenzene-d4	13.849	152	72828	19.652	ug/L	0.00
Spike Amount 25.000	Range 75 - 120		Recovery =	78.600%		
<b>Target Compounds</b>						
13) Acetone	4.125	43	15277	8.524	ug/L	93

(#) = qualifier out of range (m) = manual integration (+) = signals summed

Data Path : Z:\voasrv\HPCHEM1\MSVOA\_W\Data\VW090823\  
 Data File : VW027026.D  
 Acq On : 08 Sep 2023 15:30  
 Operator : SY/MD  
 Sample : 04332-02RE  
 Mi sc : 2.25g/10mL/MSVOA\_W/SOIL  
 ALS Vial : 1 Sample Multiplier: 1

**Instrument :**  
 MSVOA\_W  
**ClientSampleId :**  
 COACORE

**Manual IntegrationsAPPROVED**

Reviewed By :Semsettin Yesilyurt 09/11/2023  
 Supervised By :Mahesh Dadoda 09/11/2023

Quant Time: Sep 09 03:02:08 2023  
 Quant Method : Z:\voasrv\HPCHEM1\MSVOA\_W\Method\SFAMLM090523SMA.M  
 Quant Title : SFAM01.0  
 QLast Update : Sat Sep 09 02:59:49 2023  
 Response via : Initial Calibration

