

Data Path : Z:\voasrv\HPCHEM1\MSVOA\_W\Data\VW090823\  
 Data File : VW027028.D  
 Acq On : 08 Sep 2023 16:18  
 Operator : SY/MD  
 Sample : 04332-09RE  
 Misc : 1.28g/10mL/MSVOA\_W/SOIL  
 ALS Vial : 1 Sample Multiplier: 1

**Instrument :**  
 MSVOA\_W  
**ClientSampleId :**  
 C0AD1RE

Quant Time: Sep 09 03:02:34 2023  
 Quant Method : Z:\voasrv\HPCHEM1\MSVOA\_W\Method\SFAMWLM090523SMA.M  
 Quant Title : SFAM01.0  
 QLast Update : Sat Sep 09 02:59:49 2023  
 Response via : Initial Calibration

**Manual Integrations**  
**APPROVED**  
 Reviewed By :Semsettin Yesilyurt 09/11/2023  
 Supervised By :Mahesh Dadoda 09/11/2023

Compound	R.T.	QIon	Response	Conc	Units	Dev(Min)
<b>Internal Standards</b>						
1) 1,4-Difluorobenzene	8.843	114	546130	25.000	ug/L	0.00
28) Chlorobenzene-d5	11.629	117	349363	25.000	ug/L	0.00
58) 1,4-Dichlorobenzene-d4	13.556	152	80169	25.000	ug/L	0.00
<b>System Monitoring Compounds</b>						
4) Vinyl Chloride-d3	2.369	65	168960m	17.317	ug/L	0.00
Spiked Amount	25.000	Range 30 - 150	Recovery =	69.280%		
7) Chloroethane-d5	2.893	69	162369	20.619	ug/L	0.00
Spiked Amount	25.000	Range 30 - 150	Recovery =	82.480%		
11) 1,1-Dichloroethene-d2	4.021	65	50107	13.935	ug/L	0.00
Spiked Amount	25.000	Range 45 - 110	Recovery =	55.720%		
21) 2-Butanone-d5	7.087	46	38827m	20.653	ug/L	0.01
Spiked Amount	50.000	Range 20 - 135	Recovery =	41.300%		
24) Chloroform-d	7.648	84	345893	21.284	ug/L	0.00
Spiked Amount	25.000	Range 40 - 150	Recovery =	85.120%		
26) 1,2-Dichloroethane-d4	8.307	65	191956m	22.473	ug/L	0.00
Spiked Amount	25.000	Range 70 - 130	Recovery =	89.880%		
32) Benzene-d6	8.276	84	578739	25.255	ug/L	0.00
Spiked Amount	25.000	Range 20 - 135	Recovery =	101.040%		
36) 1,2-Dichloropropane-d6	9.276	67	214491	31.883	ug/L	0.00
Spiked Amount	25.000	Range 70 - 120	Recovery =	127.520%#		
41) Toluene-d8	10.325	98	388308	18.716	ug/L	0.00
Spiked Amount	25.000	Range 30 - 130	Recovery =	74.880%		
43) trans-1,3-Dichloroprop...	10.575	79	20356	7.797	ug/L	0.00
Spiked Amount	25.000	Range 30 - 135	Recovery =	31.200%		
47) 2-Hexanone-d5	10.928	63	5074m	8.079	ug/L	0.00
Spiked Amount	50.000	Range 20 - 135	Recovery =	16.160%#		
56) 1,1,2,2-Tetrachloroeth...	12.690	84	122838	23.529	ug/L	0.00
Spiked Amount	25.000	Range 45 - 120	Recovery =	94.120%		
66) 1,2-Dichlorobenzene-d4	13.848	152	49969	18.022	ug/L	0.00
Spiked Amount	25.000	Range 75 - 120	Recovery =	72.080%#		
<b>Target Compounds</b>						
13) Acetone	4.118	43	49724	30.207	ug/L	96

(#) = qualifier out of range (m) = manual integration (+) = signals summed

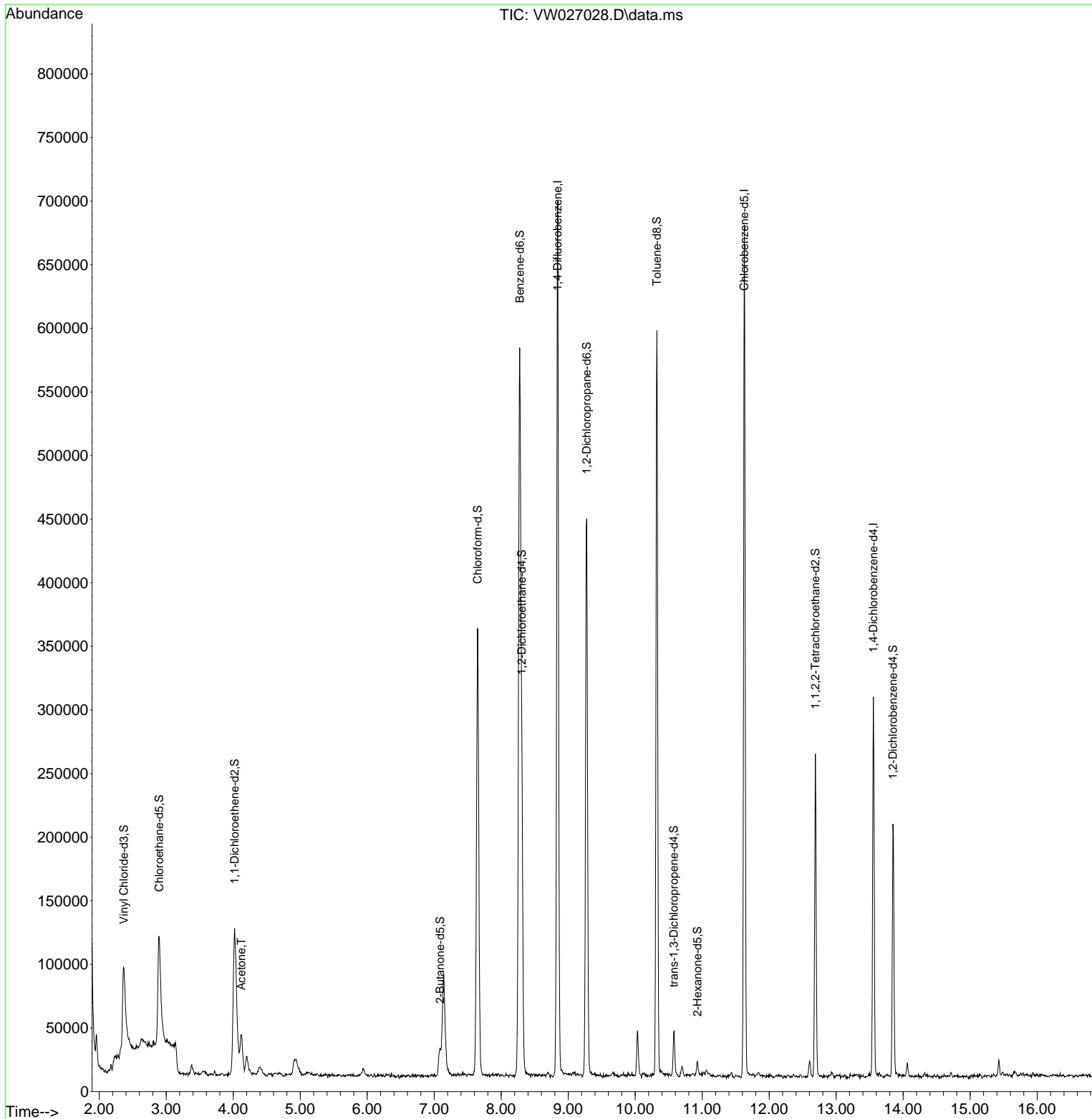
Data Path : Z:\voasrv\HPCHEM1\MSVOA\_W\Data\VW090823\  
 Data File : VW027028.D  
 Acq On : 08 Sep 2023 16:18  
 Operator : SY/MD  
 Sample : 04332-09RE  
 Misc : 1.28g/10mL/MSVOA\_W/SOIL  
 ALS Vial : 1 Sample Multiplier: 1

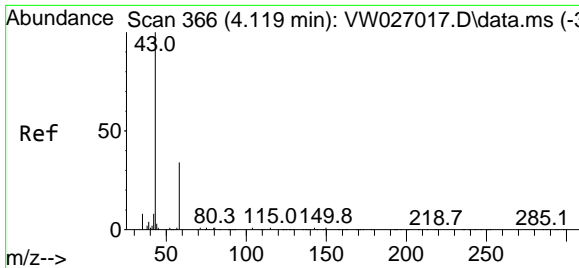
Instrument :  
 MSVOA\_W  
 ClientSampleId :  
 C0AD1RE

Quant Time: Sep 09 03:02:34 2023  
 Quant Method : Z:\voasrv\HPCHEM1\MSVOA\_W\Method\SFAMWLM090523SMA.M  
 Quant Title : SFAM01.0  
 QLast Update : Sat Sep 09 02:59:49 2023  
 Response via : Initial Calibration

Manual Integrations  
**APPROVED**

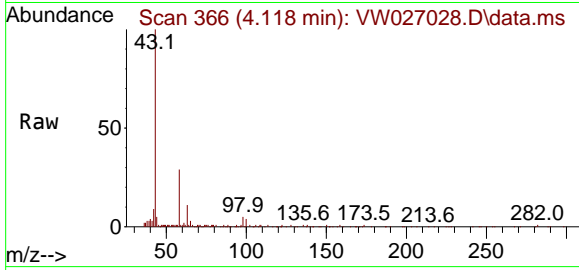
Reviewed By :Semsettin Yesilyurt 09/11/2023  
 Supervised By :Mahesh Dadoda 09/11/2023





#13  
 Acetone  
 Concen: 30.207 ug/L  
 RT: 4.118 min Scan# 30  
 Delta R.T. -0.000 min  
 Lab File: VW027028.D  
 Acq: 08 Sep 2023 16:18

Instrument :  
 MSVOA\_W  
 ClientSampleId :  
 C0AD1RE



Tgt Ion: 43 Resp: 49724  
 Ion Ratio Lower Upper  
 43 100  
 58 31.2 0.0 66.4

Manual Integrations  
 APPROVED

Reviewed By :Semsettin Yesilyurt 09/11/2023  
 Supervised By :Mahesh Dadoda 09/11/2023

