

Data Path : Z:\voasrv\HPCHEM1\MSVOA_W\Data\VW091624\
 Data File : VW030133.D
 Acq On : 16 Sep 2024 14:57
 Operator : SY/MD
 Sample : VSTD005
 Misc : 5.00g/10mL/MSVOA_W/SOIL
 ALS Vial : 3 Sample Multiplier: 1

Instrument :
 MSVOA_W
ClientSampleId :

Quant Time: Sep 17 04:19:47 2024
 Quant Method : Z:\voasrv\HPCHEM1\MSVOA_W\Method\SFAMWLM091624SMA.M
 Quant Title : SFAM01.0
 QLast Update : Tue Sep 17 04:16:13 2024
 Response via : Initial Calibration

Compound	R.T.	QI on	Response	Conc	Units	Dev(Min)
Internal Standards						
1) 1,4-Difluorobenzene	8.843	114	253115	25.000	ug/L	0.00
28) Chlorobenzene-d5	11.629	117	234617	25.000	ug/L	0.00
58) 1,4-Dichlorobenzene-d4	13.556	152	110436	25.000	ug/L	0.00
System Monitoring Compounds						
4) Vinyl chloride-d3	2.363	65	18111	5.541	ug/L	0.00
7) Chloroethane-d5	2.899	69	12610	5.464	ug/L	0.00
11) 1,1-Dichloroethene-d2	4.015	65	8779	5.375	ug/L	-0.01
21) 2-Butanone-d5	7.088	46	6989	8.879	ug/L	0.00
24) Chloroform-d	7.655	84	37314	5.362	ug/L	0.00
26) 1,2-Dichloroethane-d4	8.307	65	18603	5.323	ug/L	0.00
32) Benzene-d6	8.276	84	72004	5.327	ug/L	0.00
36) 1,2-Dichloropropane-d6	9.276	67	22095	5.295	ug/L	0.00
41) Toluene-d8	10.325	98	62830	5.187	ug/L	0.00
43) trans-1,3-Dichloroprop...	10.581	79	8190	4.899	ug/L	0.00
47) 2-Hexanone-d5	10.922	63	5206	8.153	ug/L	0.00
56) 1,1,2,2-Tetrachloroeth...	12.690	84	15477	4.982	ug/L	0.00
66) 1,2-Dichlorobenzene-d4	13.849	152	20525	5.475	ug/L	0.00
Target Compounds						
2) Dichlorodifluoromethane	2.015	85	13148	4.817	ug/L #	85
3) Chloromethane	2.223	50	12915	4.956	ug/L	98
5) Vinyl chloride	2.375	62	17341	5.400	ug/L	96
6) Bromomethane	2.790	94	9751	5.068	ug/L	99
8) Chloroethane	2.936	64	10262	5.354	ug/L	96
9) Trichlorofluoromethane	3.265	101	19306	5.097	ug/L	99
10) 1,1,2-Trichloro-1,2,2-...	4.082	101	17190	5.054	ug/L #	83
12) 1,1-Dichloroethene	4.045	96	15744	5.211	ug/L	98
13) Acetone	4.125	43	7827	8.696	ug/L	98
14) Carbon disulfide	4.387	76	46403	5.406	ug/L	97
15) Methyl Acetate	4.679	43	6843	4.660	ug/L	98
16) Methylene chloride	4.923	84	19977	5.352	ug/L	97
17) trans-1,2-Dichloroethene	5.435	96	16899	5.074	ug/L	97
18) Methyl tert-butyl Ether	5.423	73	24450	4.658	ug/L #	87
19) 1,1-Dichloroethane	6.222	63	34761	5.140	ug/L	95
20) cis-1,2-Dichloroethene	7.179	96	17562	4.804	ug/L	95
22) 2-Butanone	7.173	43	8996	8.633	ug/L	90
23) Bromochloromethane	7.514	128	8394	5.138	ug/L	93
25) Chloroform	7.679	83	35033	5.100	ug/L	94
27) 1,2-Dichloroethane	8.398	62	21803	5.061	ug/L	97
29) Cyclohexane	7.959	56	23564	4.714	ug/L	99
30) 1,1,1-Trichloroethane	7.874	97	29038	5.117	ug/L	98
31) Carbon tetrachloride	8.075	117	25943	5.031	ug/L	99
33) Benzene	8.325	78	73364	5.114	ug/L	100
34) Trichloroethene	9.093	95	19605	5.063	ug/L	95
35) Methyl cyclohexane	9.337	83	29919	5.012	ug/L	99
37) 1,2-Dichloropropane	9.368	63	19746	5.079	ug/L	99
38) Bromochloromethane	9.648	83	23994	4.901	ug/L	98
39) cis-1,3-Dichloropropene	10.075	75	25790	4.534	ug/L	94
40) 4-Methyl-2-pentanone	10.209	43	16780	8.447	ug/L	99
42) Toluene	10.386	91	76354	5.016	ug/L	89
44) trans-1,3-Dichloropropene	10.605	75	21473	4.488	ug/L	97

Data Path : Z:\voasrv\HPCHEM1\MSVOA_W\Data\VW091624\
 Data File : VW030133.D
 Acq On : 16 Sep 2024 14:57
 Operator : SY/MD
 Sample : VSTD005
 Mi sc : 5.00g/10mL/MSVOA_W/SOIL
 ALS Vial : 3 Sample Multiplier: 1

Instrument :
 MSVOA_W
 ClientSampleId :

Quant Time: Sep 17 04:19:47 2024
 Quant Method : Z:\voasrv\HPCHEM1\MSVOA_W\Method\SFAMWLM091624SMA.M
 Quant Title : SFAM01.0
 QLast Update : Tue Sep 17 04:16:13 2024
 Response via : Initial Calibration

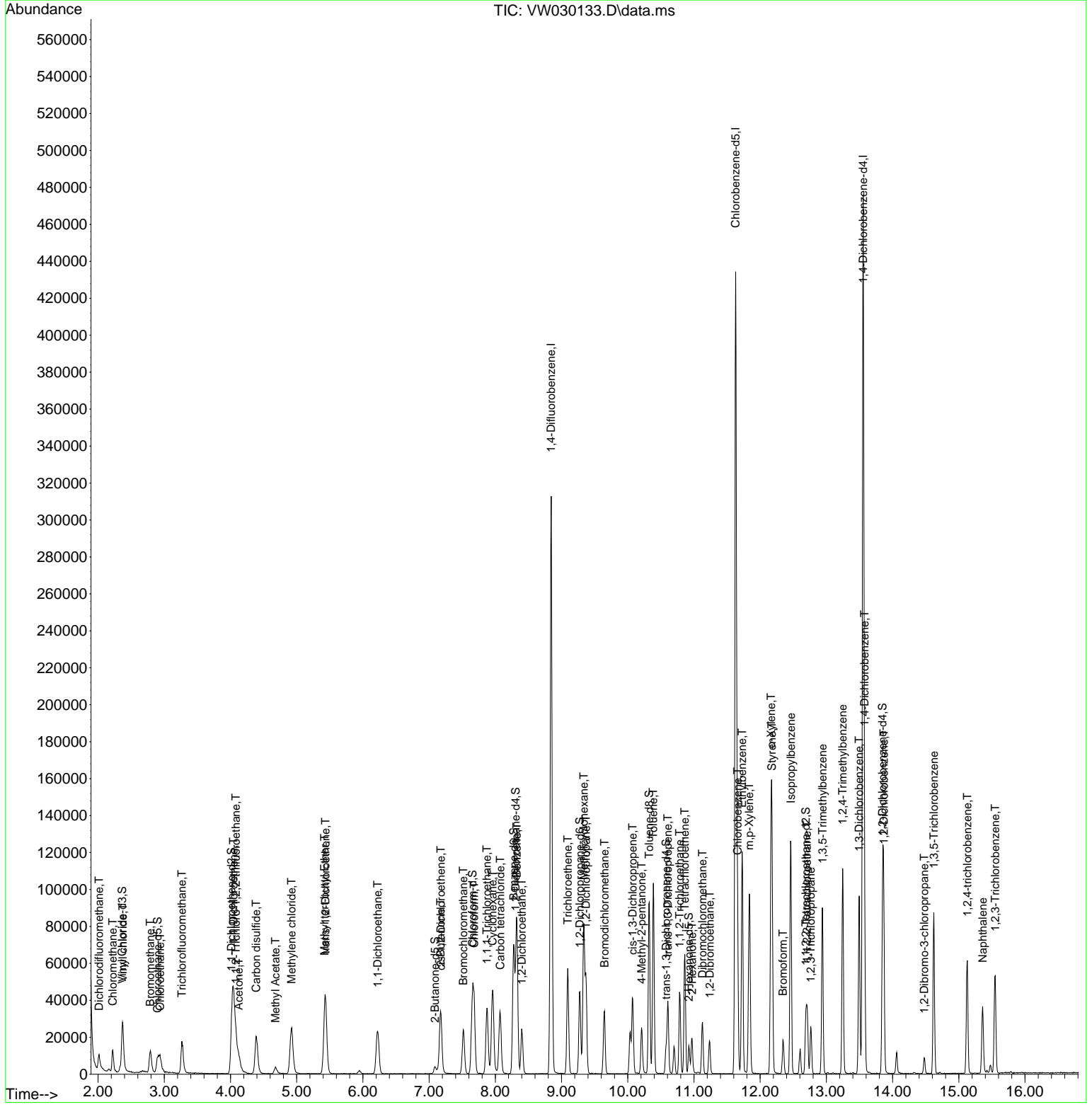
Compound	R.T.	QI on	Response	Conc	Units	Dev(Min)
45) 1,1,2-Tri chloroethane	10.782	97	13807	4.880	ug/L	95
46) Tetrachloroethene	10.861	164	14227	4.979	ug/L	87
48) 2-Hexanone	10.971	43	12485	8.172	ug/L	98
49) Dibromochloromethane	11.130	129	14706	4.776	ug/L	96
50) 1,2-Dibromoethane	11.239	107	12531	4.804	ug/L	91
51) Chlorobenzene	11.660	112	48486	4.932	ug/L	93
52) Ethyl benzene	11.727	91	83033	4.766	ug/L	97
53) m,p-Xylene	11.837	106	31380	4.881	ug/L	92
54) o-Xylene	12.166	106	28466	4.706	ug/L	91
55) Styrene	12.178	104	50405	4.804	ug/L	99
57) 1,1,2,2-Tetrachloroethane	12.709	83	15659	4.637	ug/L #	97
59) Bromoform	12.343	173	8452	4.836	ug/L	100
60) Isopropyl benzene	12.465	105	79924	4.915	ug/L	98
61) 1,2,3-Tri chloropropane	12.763	75	11306	4.921	ug/L	98
62) 1,3,5-Tri methyl benzene	12.940	105	48388	4.060	ug/L	99
63) 1,2,4-Tri methyl benzene	13.245	105	58990	4.761	ug/L	99
64) 1,3-Di chlorobenzene	13.495	146	37434	5.195	ug/L	93
65) 1,4-Di chlorobenzene	13.574	146	37857	5.085	ug/L	99
67) 1,2-Di chlorobenzene	13.867	146	33134	5.102	ug/L	99
68) 1,2-Dibromo-3-chloropropane	14.476	75	2405	4.800	ug/L	89
69) 1,3,5-Tri chlorobenzene	14.623	180	25369	5.044	ug/L	98
70) 1,2,4-tri chlorobenzene	15.129	180	18760	4.604	ug/L	93
71) Naphthalene	15.360	128	31149	4.210	ug/L	98
72) 1,2,3-Tri chlorobenzene	15.549	180	17141	4.797	ug/L	95

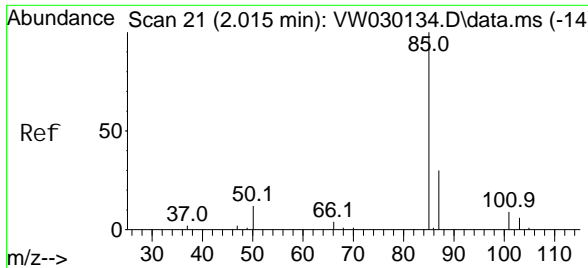
(#) = qualifier out of range (m) = manual integration (+) = signals summed

Data Path : Z:\voasrv\HPCHEM1\MSVOA_W\Data\VW091624\
 Data File : VW030133.D
 Acq On : 16 Sep 2024 14:57
 Operator : SY/MD
 Sample : VSTD005
 Misc : 5.00g/10mL/MSVOA_W/SOIL
 ALS Vial : 3 Sample Multiplier: 1

Instrument :
 MSVOA_W
ClientSampleId :

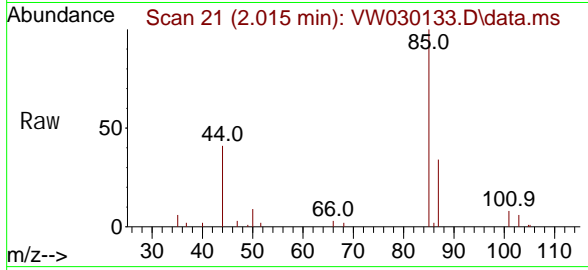
Quant Time: Sep 17 04:19:47 2024
 Quant Method : Z:\voasrv\HPCHEM1\MSVOA_W\Method\SFAMWLM091624SMA.M
 Quant Title : SFAM01.0
 QLast Update : Tue Sep 17 04:16:13 2024
 Response via : Initial Calibration



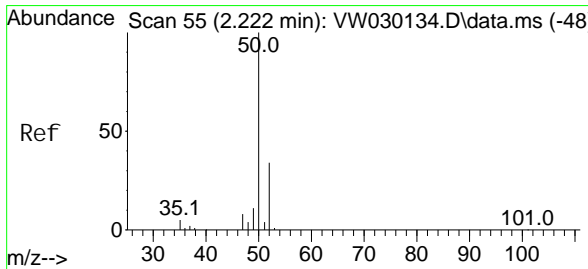
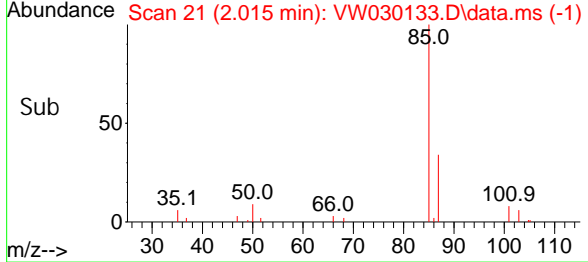
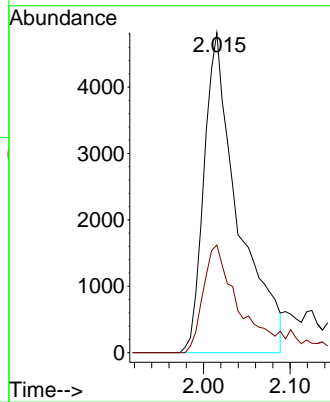


#2
 Di chl orodi fluoromethane
 Concen: 4.817 ug/L
 RT: 2.015 min Scan# 21
 Delta R.T. 0.000 min
 Lab File: VW030133.D
 Acq: 16 Sep 2024 14:57

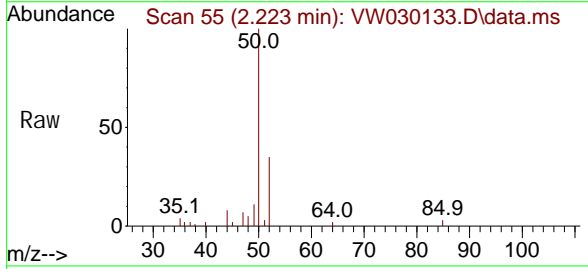
Instrument :
 MSVOA_W
 ClientSampleId :



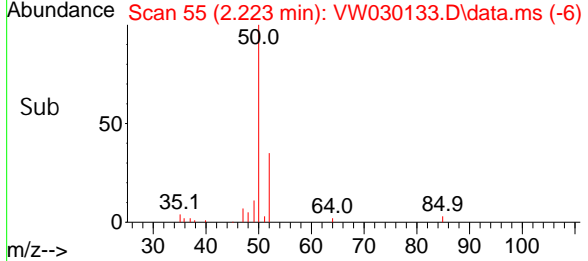
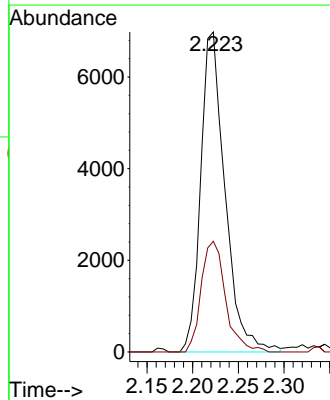
Tgt Ion: 85 Resp: 13148
 Ion Ratio Lower Upper
 85 100
 87 34.1 21.2 31.8#

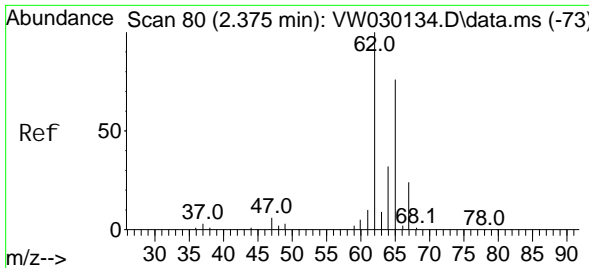


#3
 Chloromethane
 Concen: 4.956 ug/L
 RT: 2.223 min Scan# 55
 Delta R.T. 0.000 min
 Lab File: VW030133.D
 Acq: 16 Sep 2024 14:57



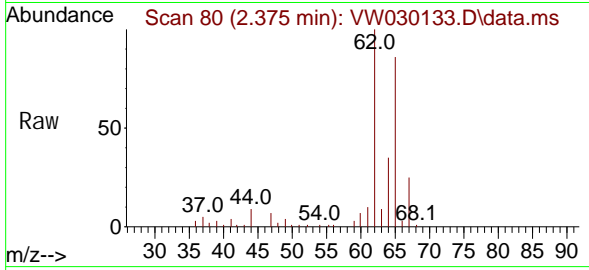
Tgt Ion: 50 Resp: 12915
 Ion Ratio Lower Upper
 50 100
 52 34.6 23.4 43.6



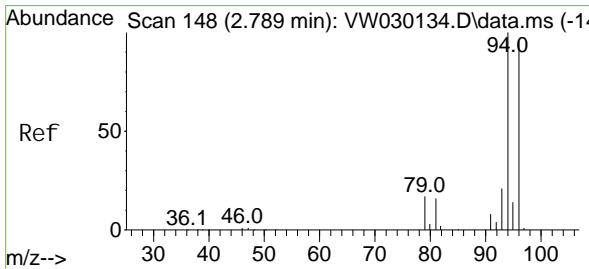
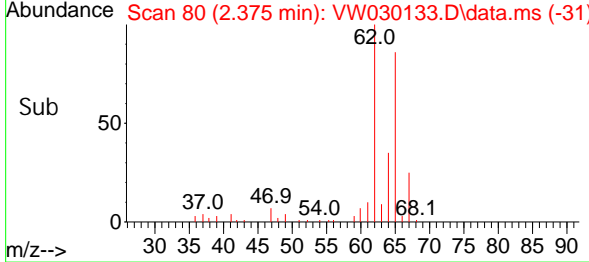
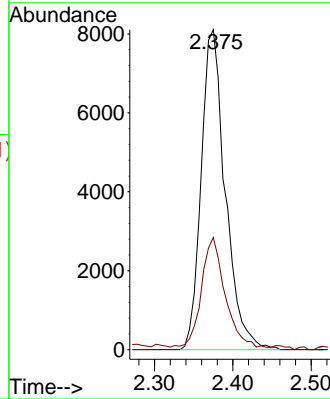


#5
 Vinyl chloride
 Concen: 5.400 ug/L
 RT: 2.375 min Scan# 80
 Delta R.T. 0.000 min
 Lab File: VW030133.D
 Acq: 16 Sep 2024 14:57

Instrument :
 MSVOA_W
 ClientSampleId :

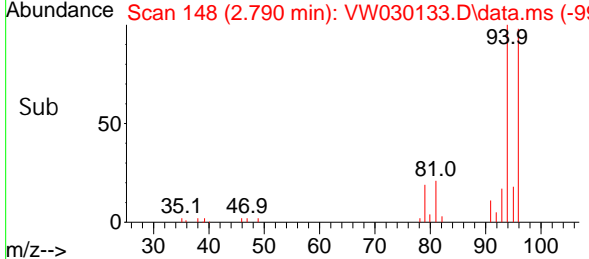
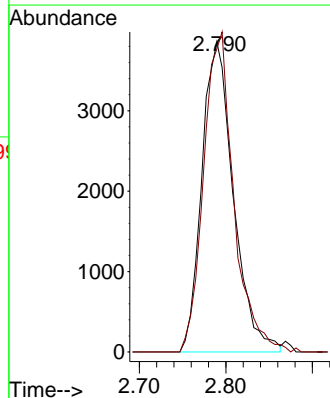
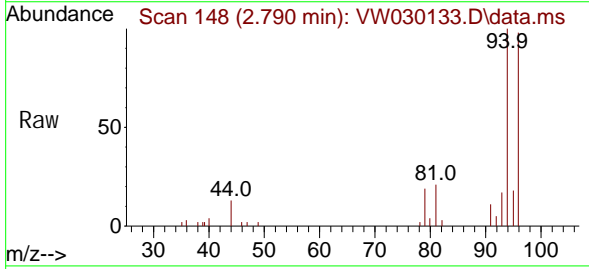


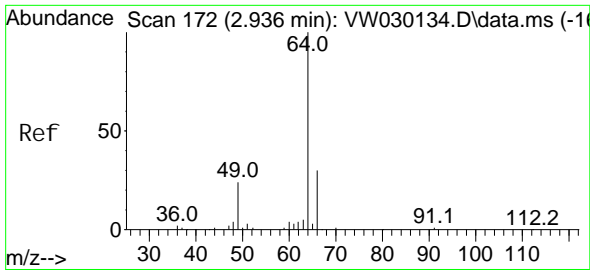
Tgt Ion: 62 Resp: 17341
 Ion Ratio Lower Upper
 62 100
 64 35.1 23.0 42.8



#6
 Bromomethane
 Concen: 5.068 ug/L
 RT: 2.790 min Scan# 148
 Delta R.T. 0.000 min
 Lab File: VW030133.D
 Acq: 16 Sep 2024 14:57

Tgt Ion: 94 Resp: 9751
 Ion Ratio Lower Upper
 94 100
 96 97.7 67.5 125.3

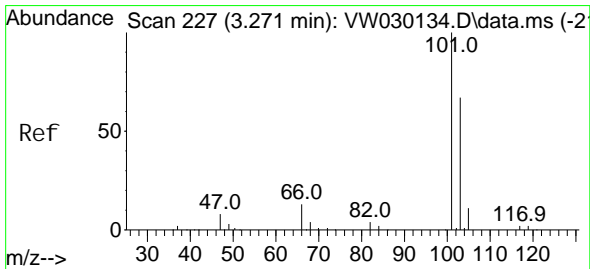
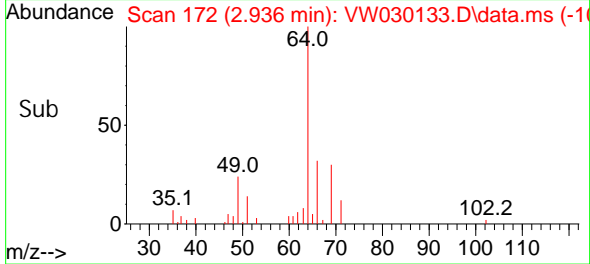
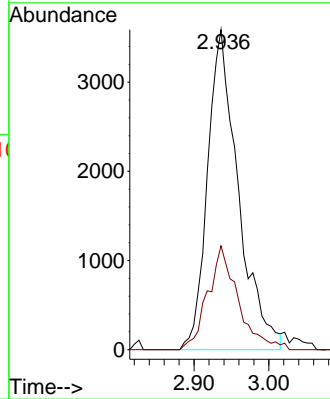
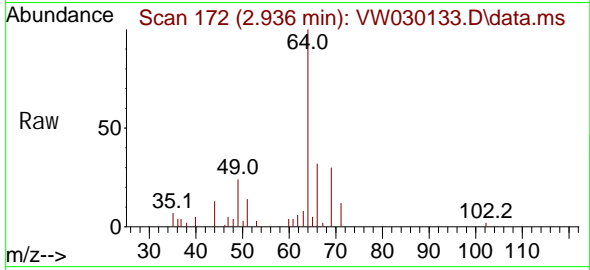




#8
 Chloroethane
 Concen: 5.354 ug/L
 RT: 2.936 min Scan# 172
 Delta R.T. 0.000 min
 Lab File: VW030133.D
 Acq: 16 Sep 2024 14:57

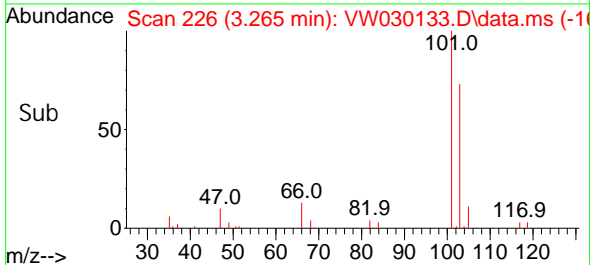
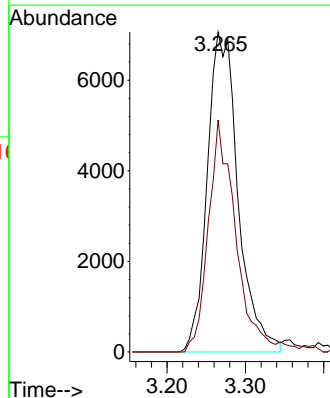
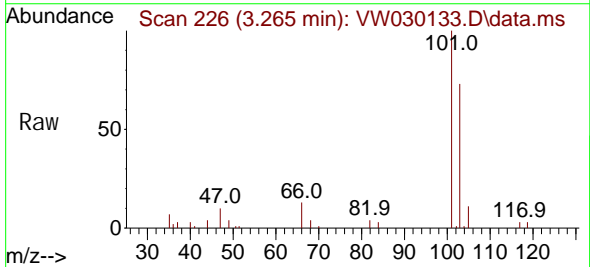
Instrument : MSVOA_W
 ClientSampleId :

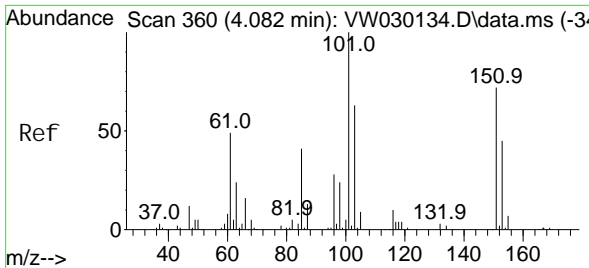
Tgt Ion: 64 Resp: 10262
 Ion Ratio Lower Upper
 64 100
 66 32.4 21.1 39.3



#9
 Trichlorofluoromethane
 Concen: 5.097 ug/L
 RT: 3.265 min Scan# 226
 Delta R.T. -0.006 min
 Lab File: VW030133.D
 Acq: 16 Sep 2024 14:57

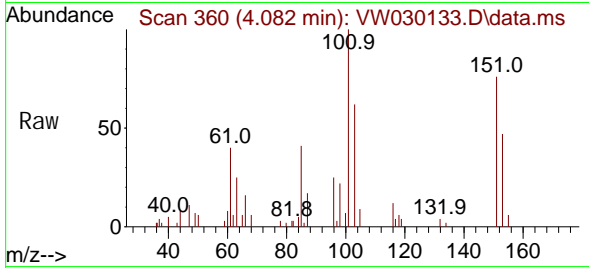
Tgt Ion: 101 Resp: 19306
 Ion Ratio Lower Upper
 101 100
 103 63.7 51.8 77.6





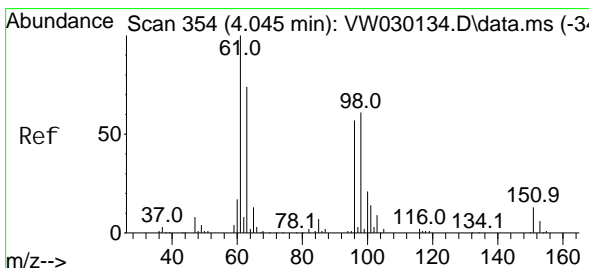
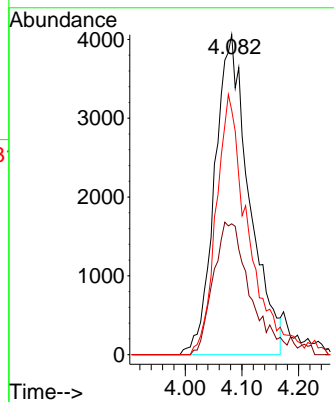
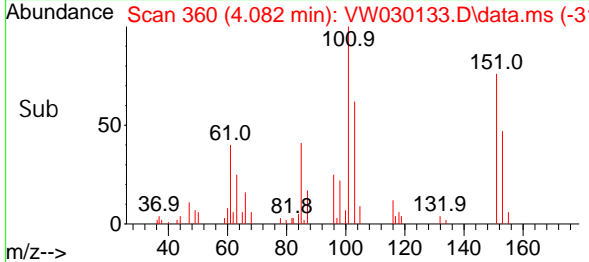
#10
 1,1,2-Tri chloro-1,2,2-tri fluoroethane
 Concen: 5.054 ug/L
 RT: 4.082 min Scan# 360
 Delta R.T. 0.000 min
 Lab File: VW030133.D
 Acq: 16 Sep 2024 14:57

Instrument : MSVOA_W
 Client SampleId :

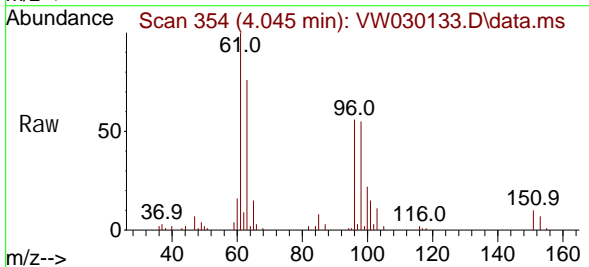


Tgt Ion: 101 Resp: 17190

Ion	Ratio	Lower	Upper
101	100		
85	19.6	34.2	51.2#
151	74.3	56.1	84.1

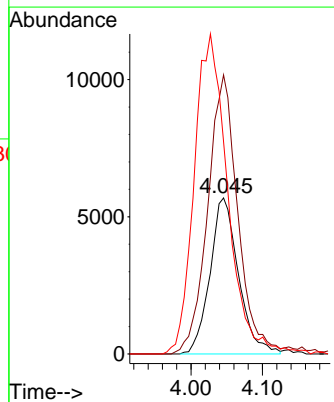
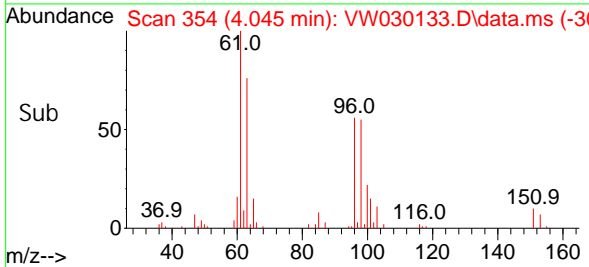


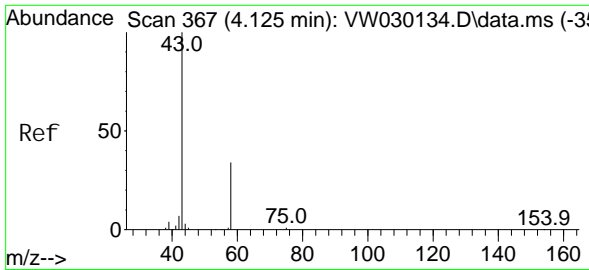
#12
 1,1-Di chloroethene
 Concen: 5.211 ug/L
 RT: 4.045 min Scan# 354
 Delta R.T. 0.000 min
 Lab File: VW030133.D
 Acq: 16 Sep 2024 14:57



Tgt Ion: 96 Resp: 15744

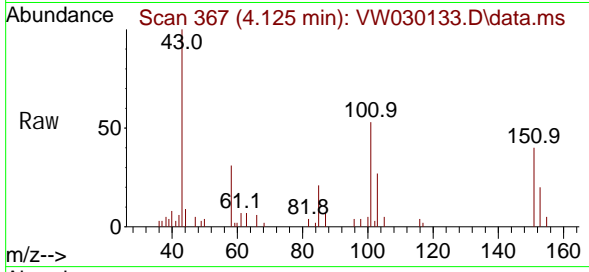
Ion	Ratio	Lower	Upper
96	100		
61	178.9	124.0	230.4
63	136.1	93.3	173.3



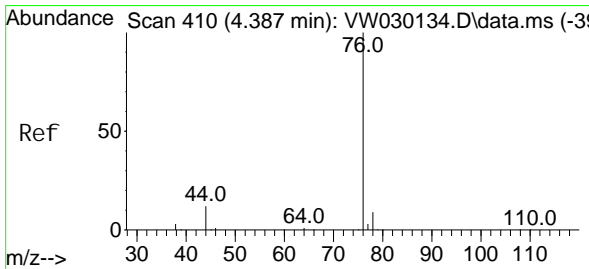
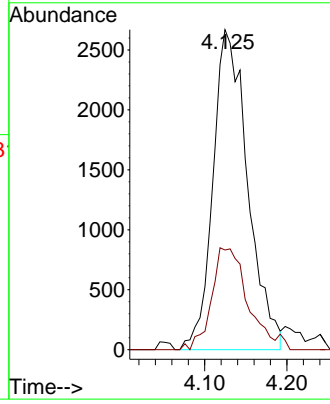
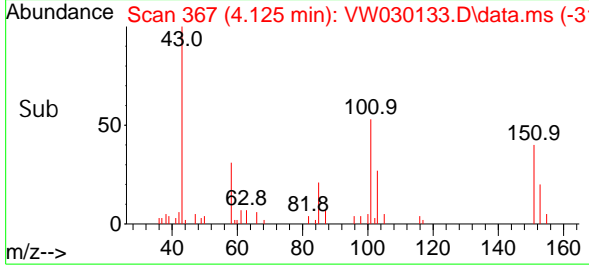


#13
 Acetone
 Concen: 8.696 ug/L
 RT: 4.125 min Scan# 367
 Delta R.T. 0.000 min
 Lab File: VW030133.D
 Acq: 16 Sep 2024 14:57

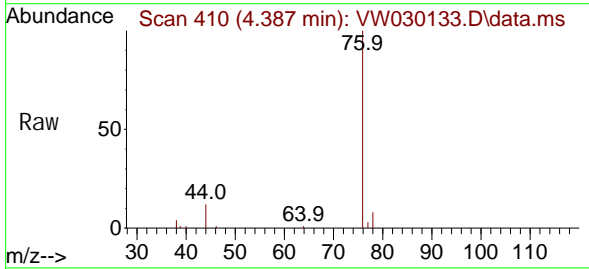
Instrument : MSVOA_W
 ClientSampleId :



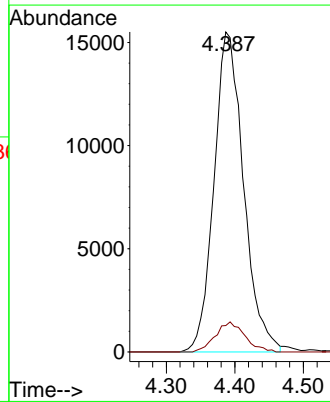
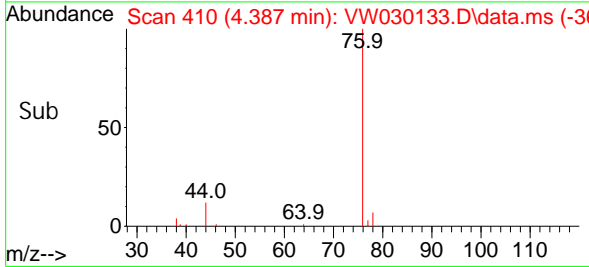
Tgt Ion: 43 Resp: 7827
 Ion Ratio Lower Upper
 43 100
 58 31.2 0.0 65.0

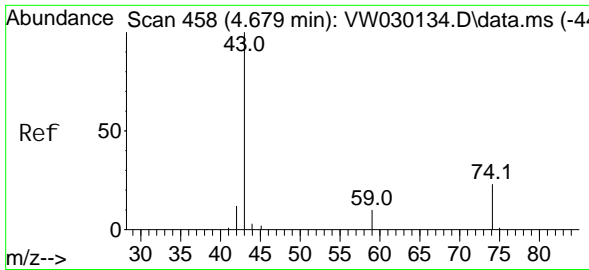


#14
 Carbon di sul fi de
 Concen: 5.406 ug/L
 RT: 4.387 min Scan# 410
 Delta R.T. 0.000 min
 Lab File: VW030133.D
 Acq: 16 Sep 2024 14:57



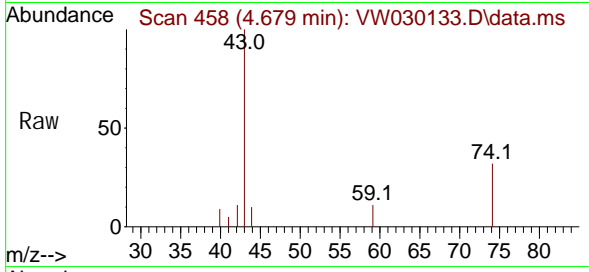
Tgt Ion: 76 Resp: 46403
 Ion Ratio Lower Upper
 76 100
 78 8.2 7.6 11.4



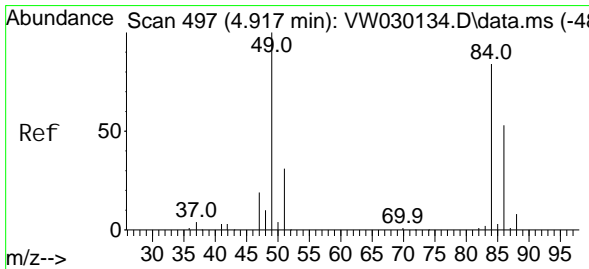
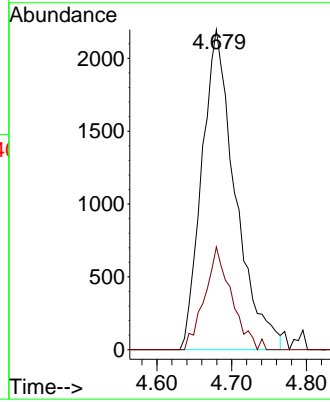
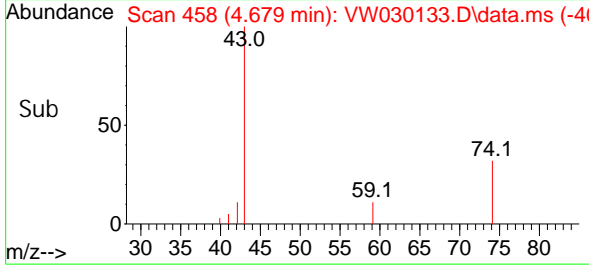


#15
 Methyl Acetate
 Concen: 4.660 ug/L
 RT: 4.679 min Scan# 458
 Delta R.T. 0.000 min
 Lab File: VW030133.D
 Acq: 16 Sep 2024 14:57

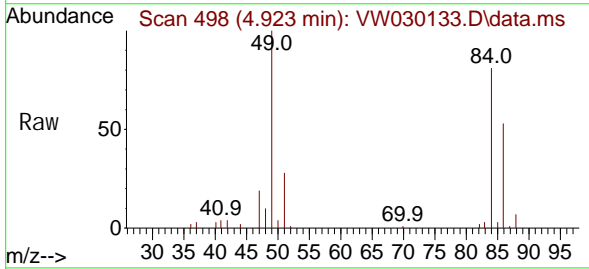
Instrument : MSVOA_W
 ClientSampleId :



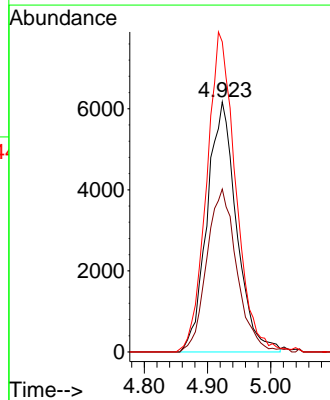
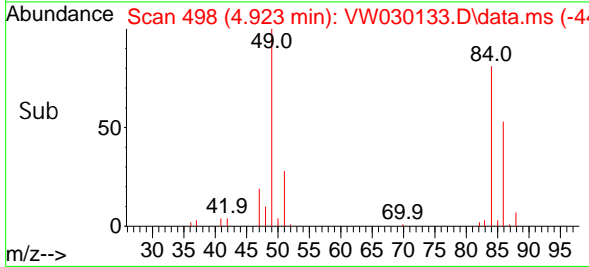
Tgt Ion: 43 Resp: 6843
 Ion Ratio Lower Upper
 43 100
 74 24.4 18.9 28.3

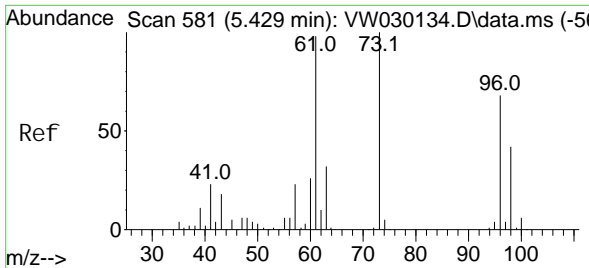


#16
 Methylene chloride
 Concen: 5.352 ug/L
 RT: 4.923 min Scan# 498
 Delta R.T. 0.006 min
 Lab File: VW030133.D
 Acq: 16 Sep 2024 14:57



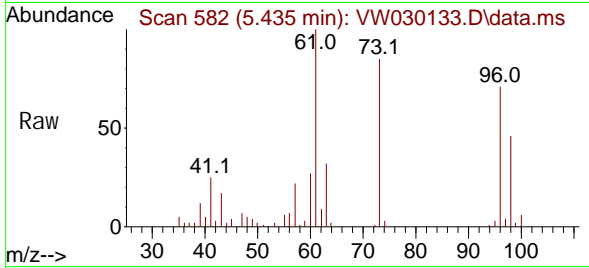
Tgt Ion: 84 Resp: 19977
 Ion Ratio Lower Upper
 84 100
 86 65.1 44.6 82.8
 49 124.0 83.8 155.6



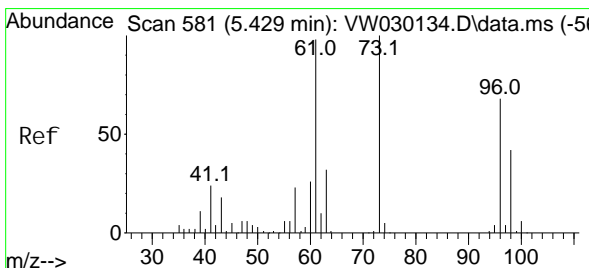
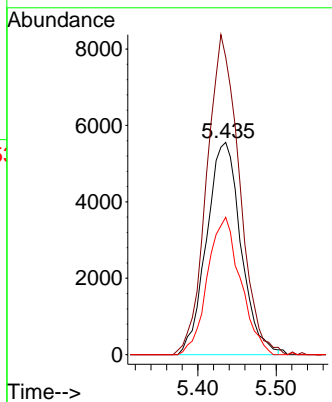
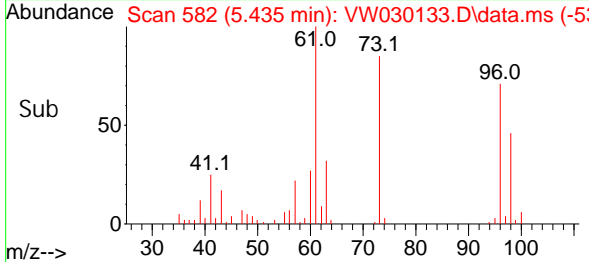


#17
 trans-1, 2-Dichloroethene
 Concen: 5.074 ug/L
 RT: 5.435 min Scan# 581
 Delta R.T. 0.006 min
 Lab File: VW030133.D
 Acq: 16 Sep 2024 14:57

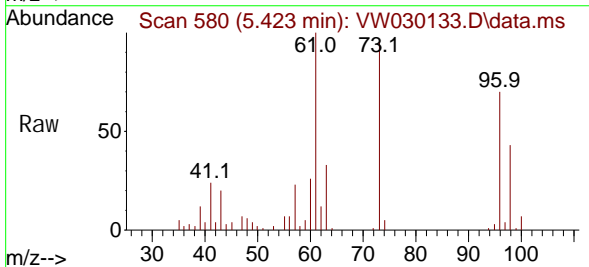
Instrument :
 MSVOA_W
 ClientSampleId :



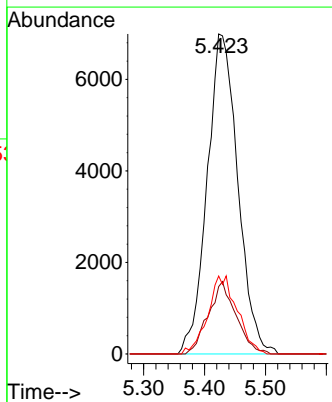
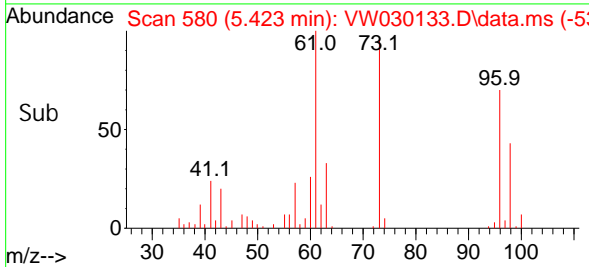
Tgt Ion: 96 Resp: 16899
 Ion Ratio Lower Upper
 96 100
 61 140.1 100.8 187.2
 98 64.8 43.0 80.0

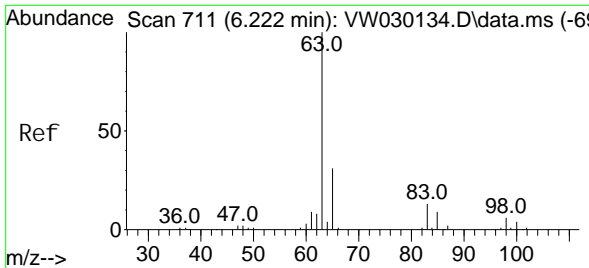


#18
 Methyl tert-butyl Ether
 Concen: 4.658 ug/L
 RT: 5.423 min Scan# 580
 Delta R.T. -0.006 min
 Lab File: VW030133.D
 Acq: 16 Sep 2024 14:57



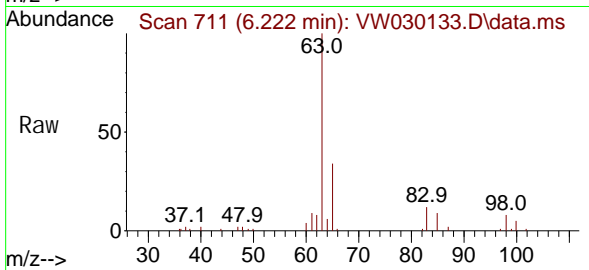
Tgt Ion: 73 Resp: 24450
 Ion Ratio Lower Upper
 73 100
 43 20.5 15.7 23.5
 57 12.6 18.8 28.2#





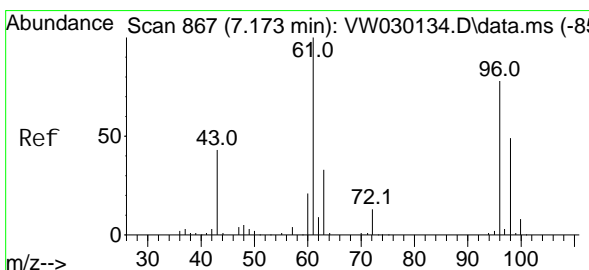
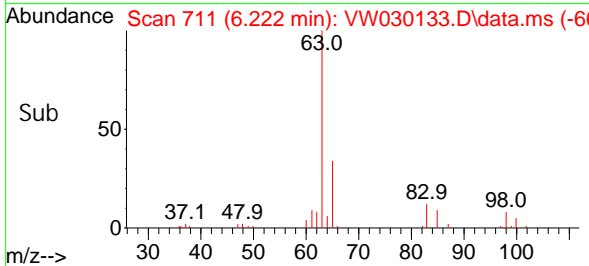
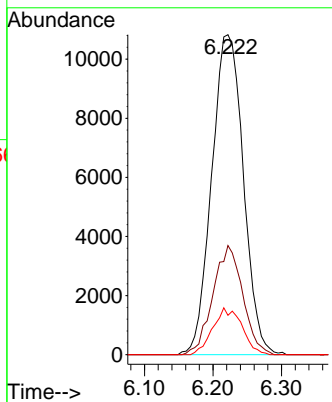
#19
 1,1-Dichloroethane
 Concen: 5.140 ug/L
 RT: 6.222 min Scan# 711
 Delta R.T. 0.000 min
 Lab File: VW030133.D
 Acq: 16 Sep 2024 14:57

Instrument : MSVOA_W
 ClientSampleId :

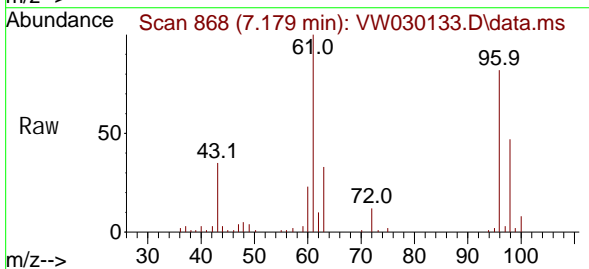


Tgt Ion: 63 Resp: 34761

Ion	Ratio	Lower	Upper
63	100		
65	34.1	21.6	40.0
83	12.3	9.0	16.8

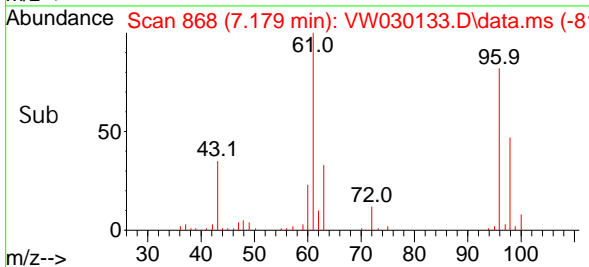
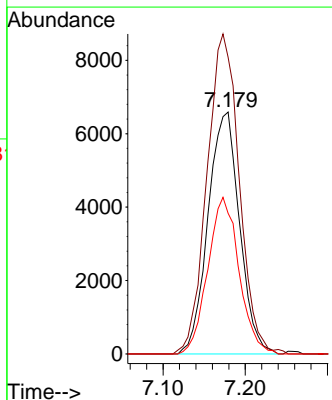


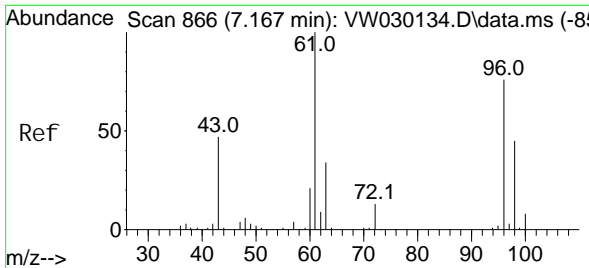
#20
 cis-1,2-Dichloroethene
 Concen: 4.804 ug/L
 RT: 7.179 min Scan# 868
 Delta R.T. 0.006 min
 Lab File: VW030133.D
 Acq: 16 Sep 2024 14:57



Tgt Ion: 96 Resp: 17562

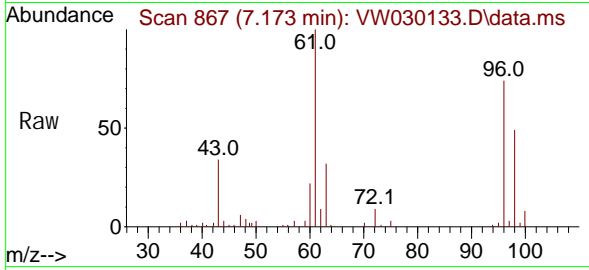
Ion	Ratio	Lower	Upper
96	100		
61	122.6	89.5	166.3
98	58.1	44.3	82.3



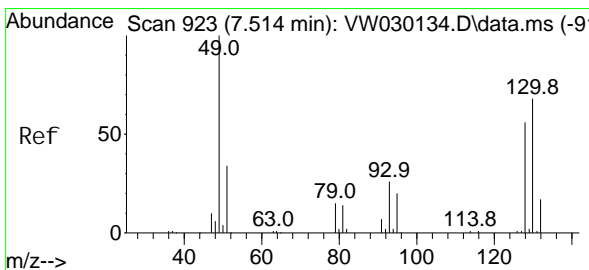
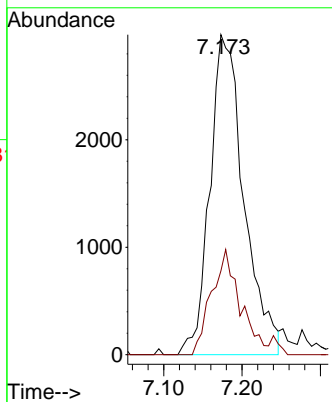
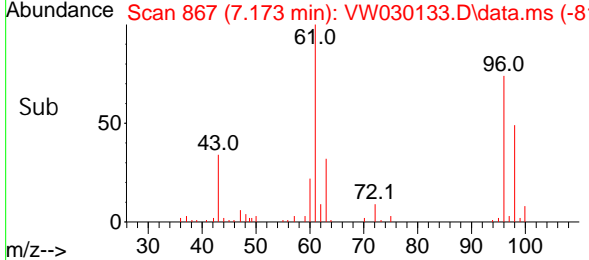


#22
 2-Butanone
 Concen: 8.633 ug/L
 RT: 7.173 min Scan# 867
 Delta R.T. 0.006 min
 Lab File: VW030133.D
 Acq: 16 Sep 2024 14:57

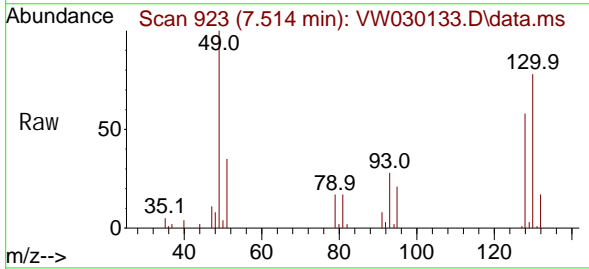
Instrument : MSVOA_W
 ClientSampleId :



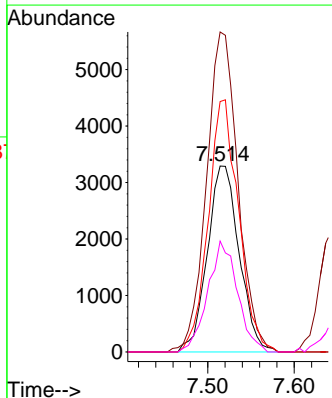
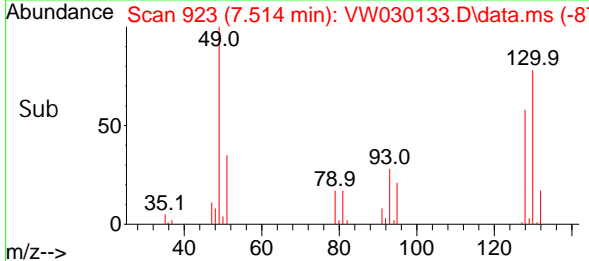
Tgt Ion: 43 Resp: 8996
 Ion Ratio Lower Upper
 43 100
 72 22.7 13.9 41.7

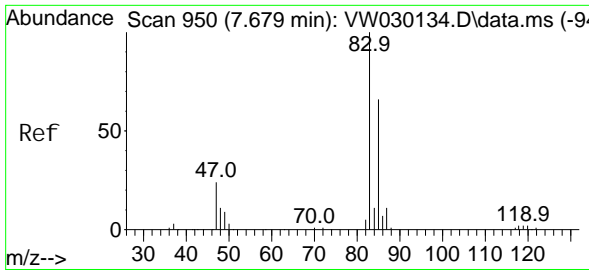


#23
 Bromochloromethane
 Concen: 5.138 ug/L
 RT: 7.514 min Scan# 923
 Delta R.T. 0.000 min
 Lab File: VW030133.D
 Acq: 16 Sep 2024 14:57



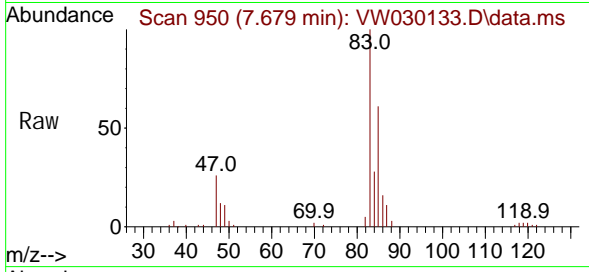
Tgt Ion: 128 Resp: 8394
 Ion Ratio Lower Upper
 128 100
 49 172.1 126.1 234.1
 130 134.6 85.9 159.5
 51 59.6 48.9 73.3



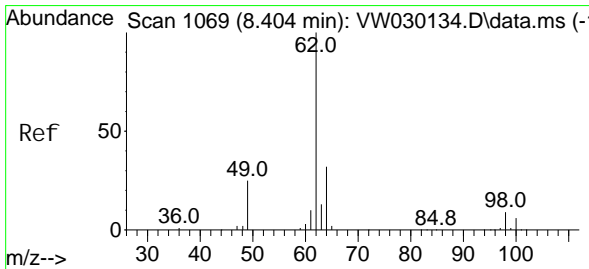
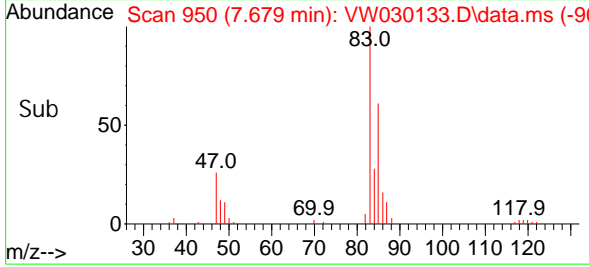
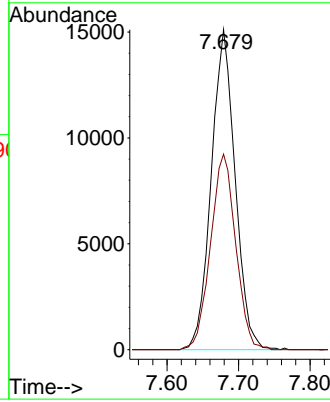


#25
 Chloroform
 Concen: 5.100 ug/L
 RT: 7.679 min Scan# 90
 Delta R.T. 0.000 min
 Lab File: VW030133.D
 Acq: 16 Sep 2024 14:57

Instrument : MSVOA_W
 ClientSampleId :

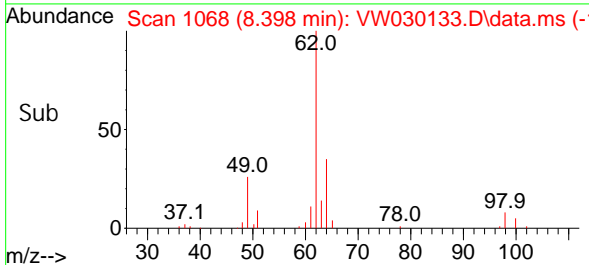
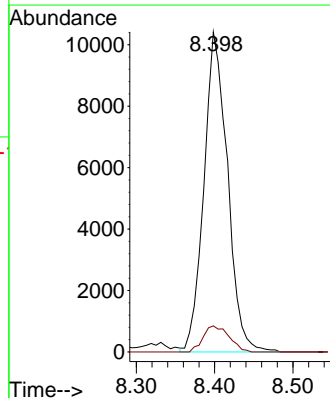
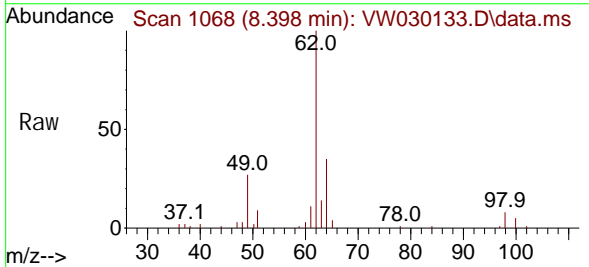


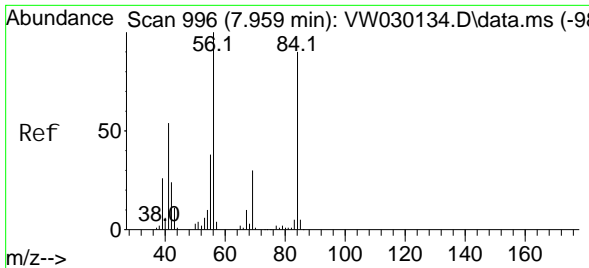
Tgt Ion: 83 Resp: 35033
 Ion Ratio Lower Upper
 83 100
 85 61.1 46.1 85.5



#27
 1,2-Dichloroethane
 Concen: 5.061 ug/L
 RT: 8.398 min Scan# 1068
 Delta R.T. -0.006 min
 Lab File: VW030133.D
 Acq: 16 Sep 2024 14:57

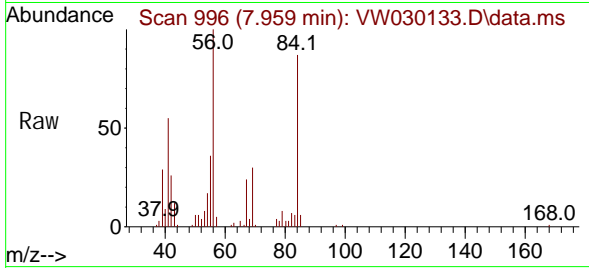
Tgt Ion: 62 Resp: 21803
 Ion Ratio Lower Upper
 62 100
 98 8.2 7.3 10.9



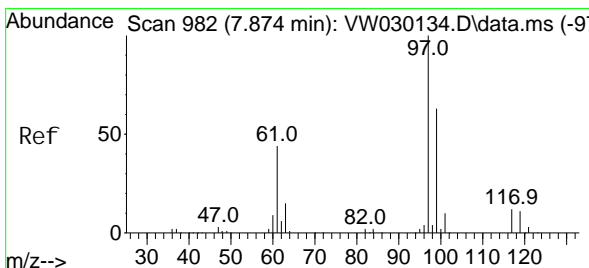
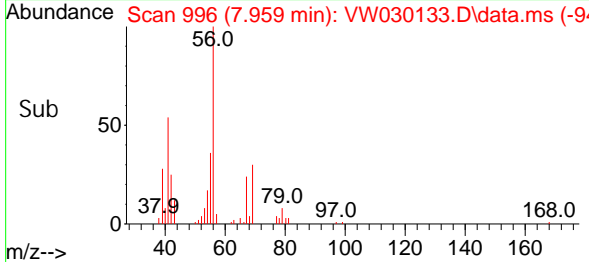
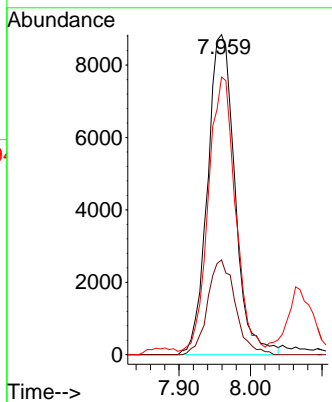


#29
 Cycl ohexane
 Concen: 4.714 ug/L
 RT: 7.959 min Scan# 996
 Delta R.T. 0.000 min
 Lab File: VW030133.D
 Acq: 16 Sep 2024 14:57

Instrument : MSVOA_W
 ClientSampleId :

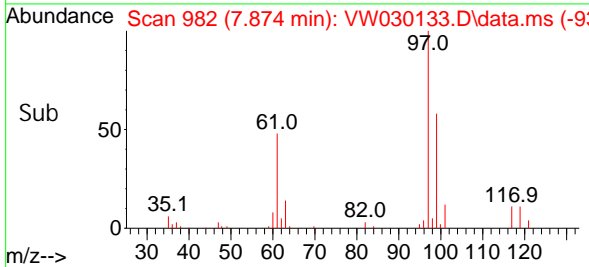
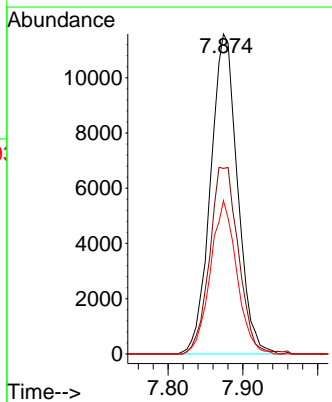
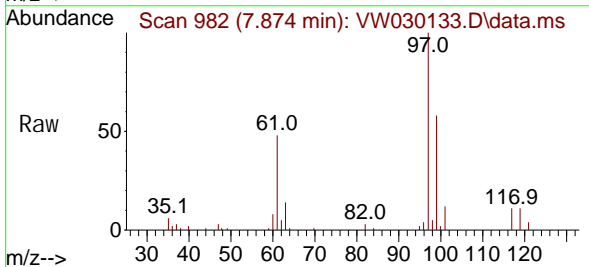


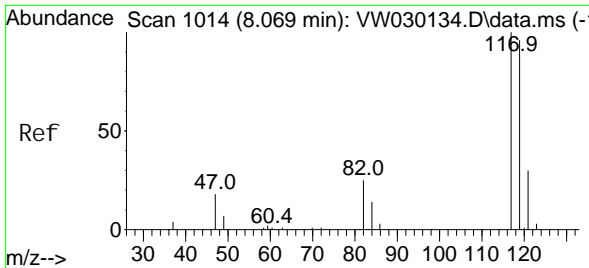
Tgt Ion	Resp	Lower	Upper
56	100		
69	29.9	24.6	37.0
84	86.6	68.9	103.3



#30
 1,1,1-Tri chloroethane
 Concen: 5.117 ug/L
 RT: 7.874 min Scan# 982
 Delta R.T. 0.000 min
 Lab File: VW030133.D
 Acq: 16 Sep 2024 14:57

Tgt Ion	Resp	Lower	Upper
97	100		
99	61.9	51.3	76.9
61	46.8	36.4	54.6

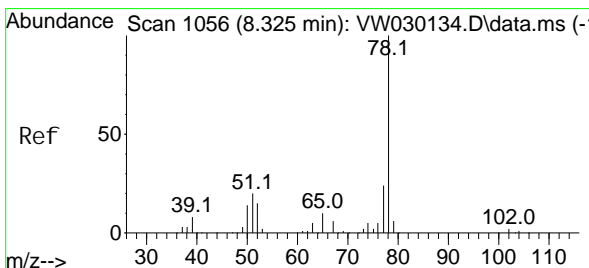
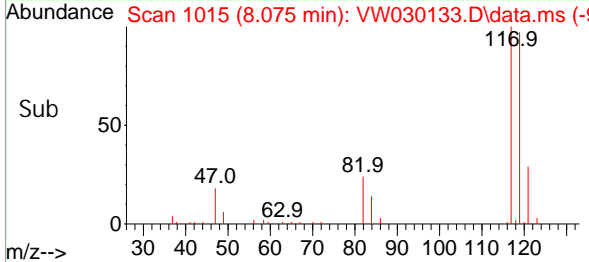
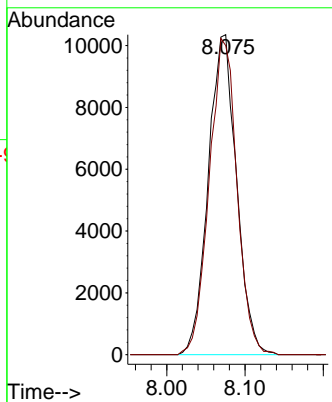
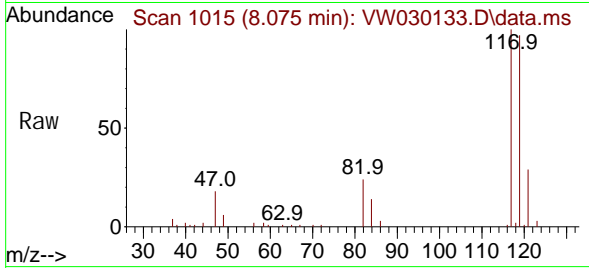




#31
 Carbon tetrachloride
 Concen: 5.031 ug/L
 RT: 8.075 min Scan# 1015
 Delta R.T. 0.006 min
 Lab File: VW030133.D
 Acq: 16 Sep 2024 14:57

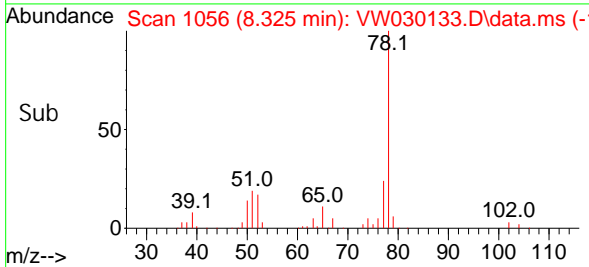
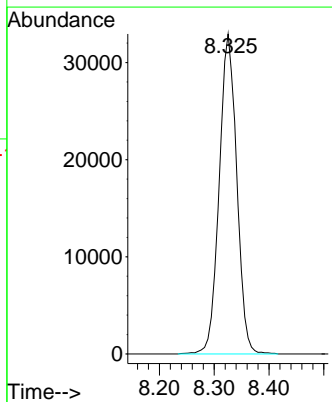
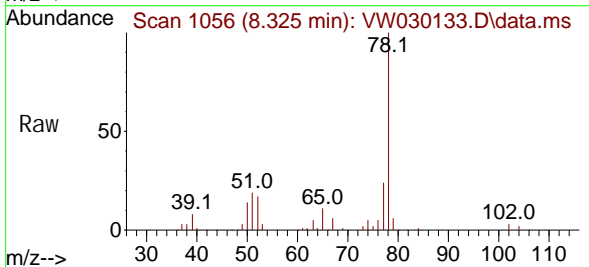
Instrument : MSVOA_W
 ClientSampleId :

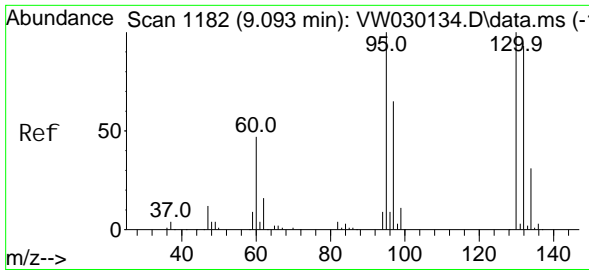
Tgt Ion: 117 Resp: 25943
 Ion Ratio Lower Upper
 117 100
 119 96.6 76.2 114.4



#33
 Benzene
 Concen: 5.114 ug/L
 RT: 8.325 min Scan# 1056
 Delta R.T. 0.000 min
 Lab File: VW030133.D
 Acq: 16 Sep 2024 14:57

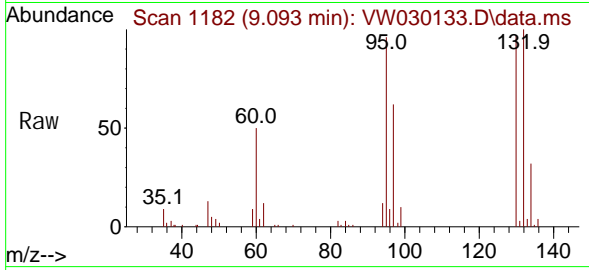
Tgt Ion: 78 Resp: 73364



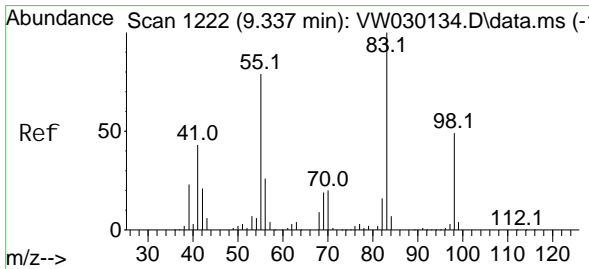
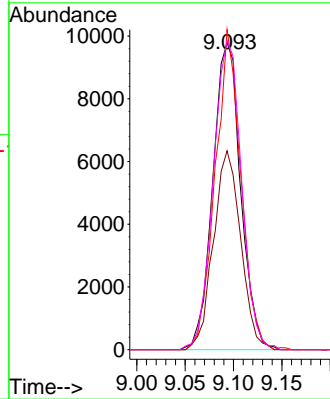
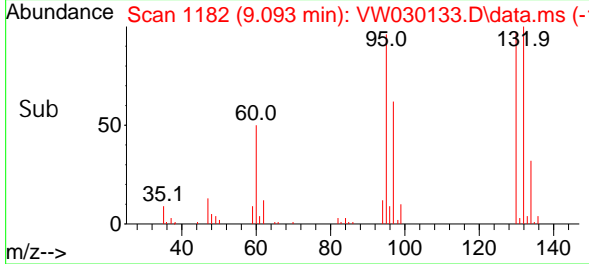


#34
 Tri chloroethene
 Concen: 5.063 ug/L
 RT: 9.093 min Scan# 1182
 Delta R.T. 0.000 min
 Lab File: VW030133.D
 Acq: 16 Sep 2024 14:57

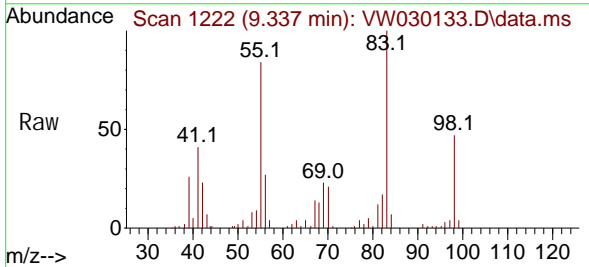
Instrument :
 MSVOA_W
 ClientSampleId :



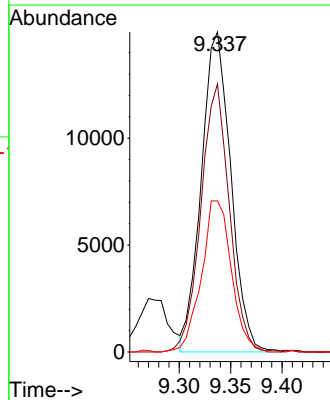
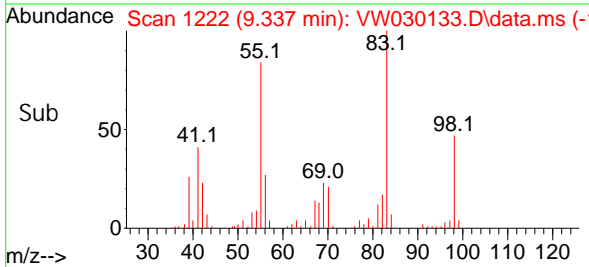
Tgt Ion: 95 Resp: 19605
 Ion Ratio Lower Upper
 95 100
 97 64.8 45.2 84.0
 132 104.3 64.8 120.3
 130 100.7 69.8 129.6

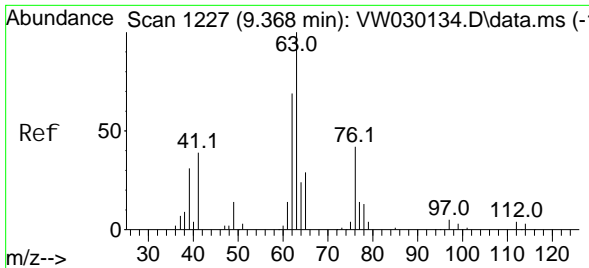


#35
 Methyl cycl ohexane
 Concen: 5.012 ug/L
 RT: 9.337 min Scan# 1222
 Delta R.T. 0.000 min
 Lab File: VW030133.D
 Acq: 16 Sep 2024 14:57



Tgt Ion: 83 Resp: 29919
 Ion Ratio Lower Upper
 83 100
 55 80.4 63.0 94.6
 98 48.0 38.7 58.1

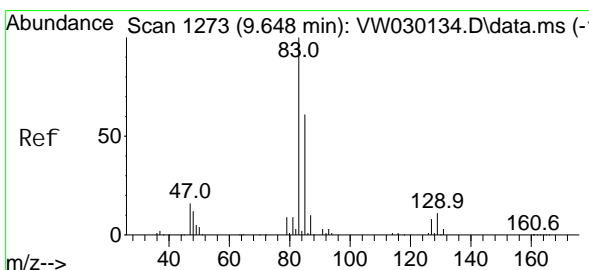
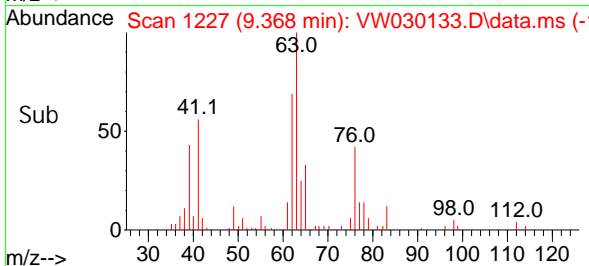
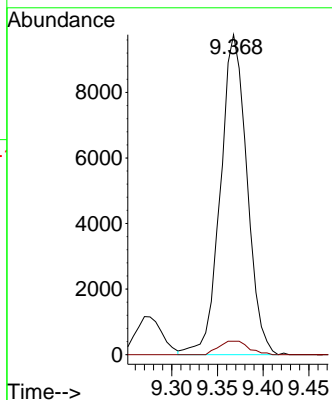
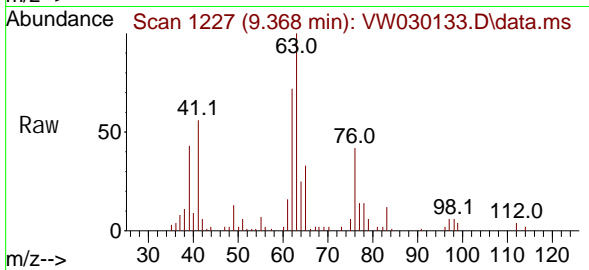




#37
 1, 2-Di chl oropropane
 Concen: 5.079 ug/L
 RT: 9.368 min Scan# 11
 Del ta R. T. 0.000 min
 Lab File: VW030133.D
 Acq: 16 Sep 2024 14:57

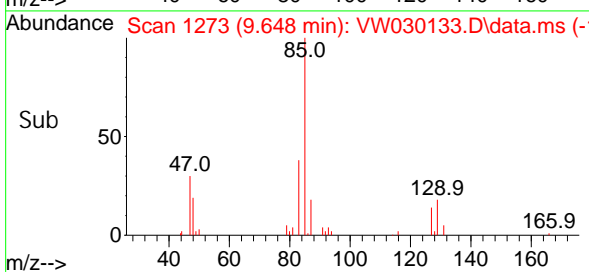
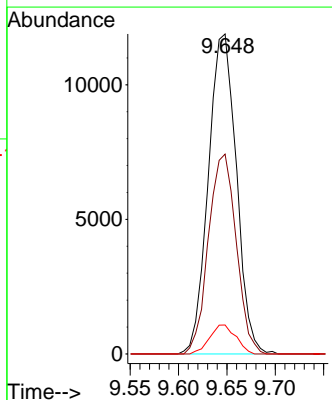
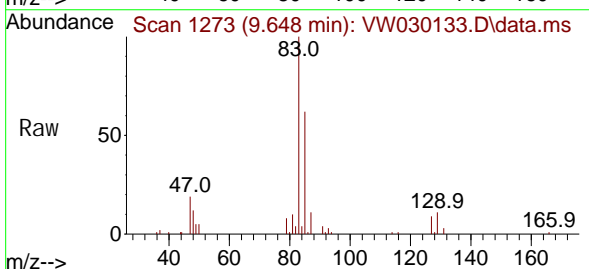
Instrument :
 MSVOA_W
 ClientSampleId :

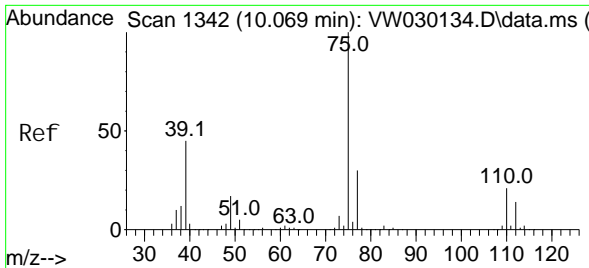
Tgt Ion: 63 Resp: 19746
 Ion Ratio Lower Upper
 63 100
 112 4.7 3.5 5.3



#38
 Bromodi chl oromethane
 Concen: 4.901 ug/L
 RT: 9.648 min Scan# 1273
 Del ta R. T. 0.000 min
 Lab File: VW030133.D
 Acq: 16 Sep 2024 14:57

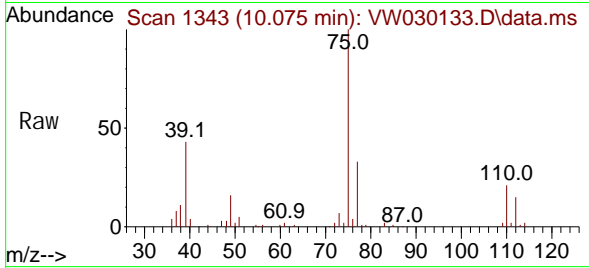
Tgt Ion: 83 Resp: 23994
 Ion Ratio Lower Upper
 83 100
 85 62.5 42.6 79.0
 127 9.0 6.3 9.5



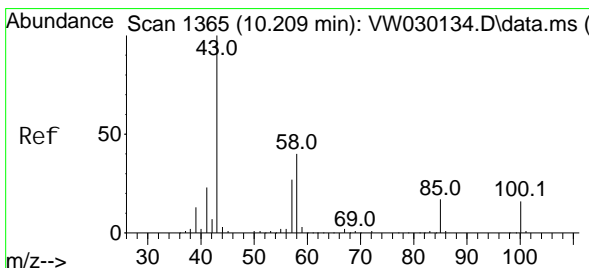
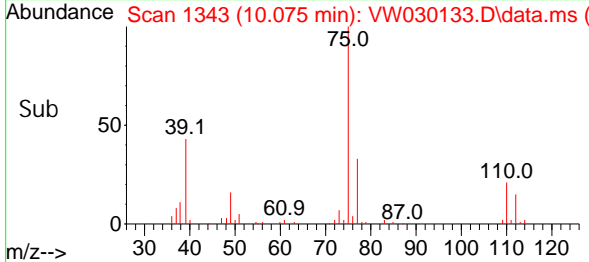
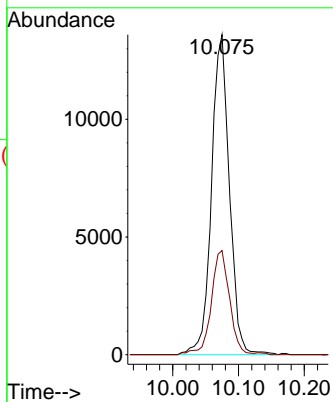


#39
 cis-1,3-Dichloropropene
 Concen: 4.534 ug/L
 RT: 10.075 min Scan# 1343
 Delta R.T. 0.006 min
 Lab File: VW030133.D
 Acq: 16 Sep 2024 14:57

Instrument : MSVOA_W
 ClientSampleId :

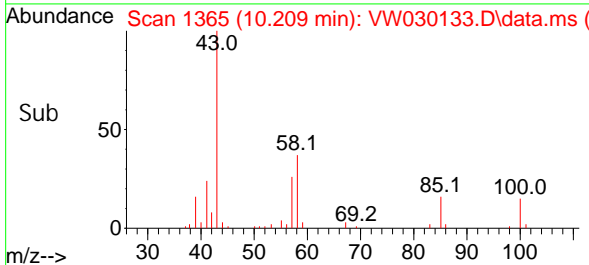
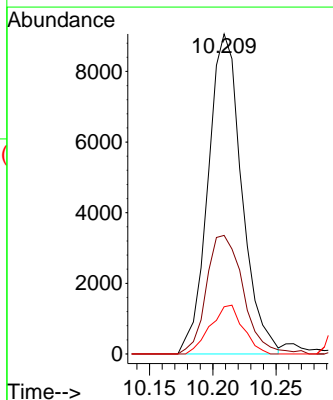
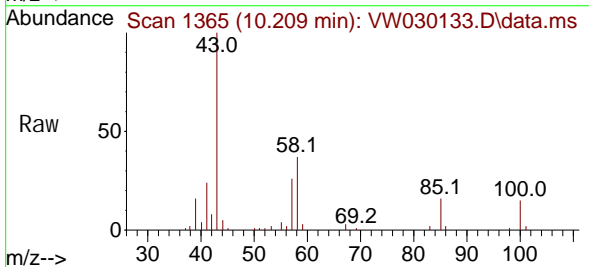


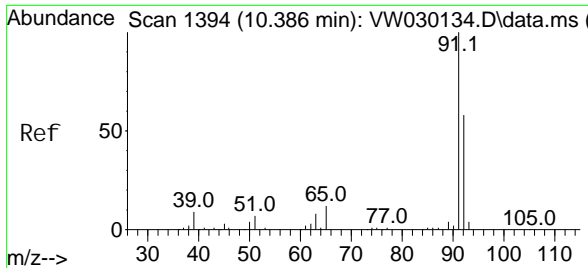
Tgt Ion: 75 Resp: 25790
 Ion Ratio Lower Upper
 75 100
 77 32.6 20.7 38.5



#40
 4-Methyl-2-pentanone
 Concen: 8.447 ug/L
 RT: 10.209 min Scan# 1365
 Delta R.T. 0.000 min
 Lab File: VW030133.D
 Acq: 16 Sep 2024 14:57

Tgt Ion: 43 Resp: 16780
 Ion Ratio Lower Upper
 43 100
 58 40.4 32.7 49.1
 100 14.8 12.7 19.1

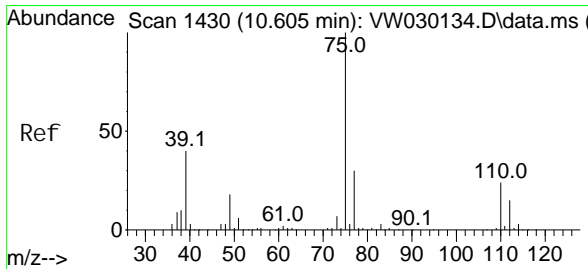
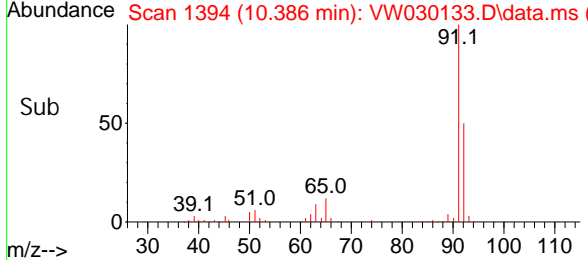
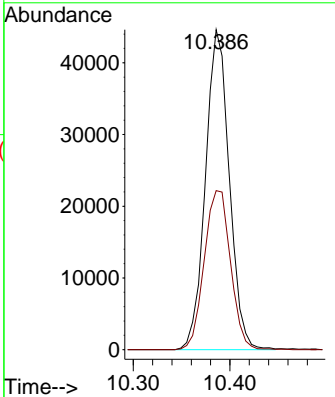
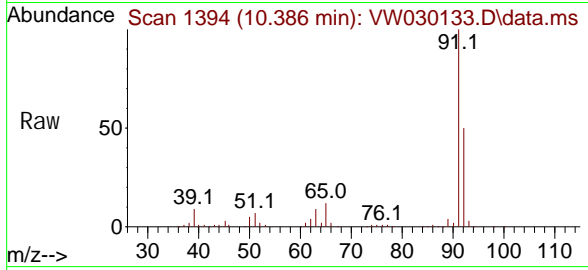




#42
 Tol uene
 Concen: 5.016 ug/L
 RT: 10.386 min Scan# 1394
 Delta R.T. 0.000 min
 Lab File: VW030133.D
 Acq: 16 Sep 2024 14:57

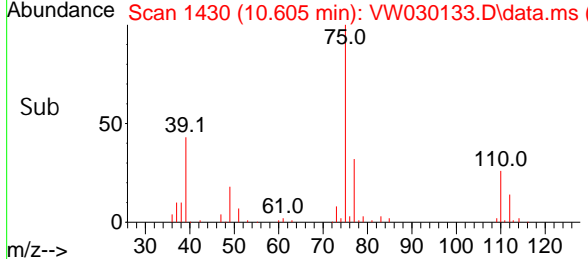
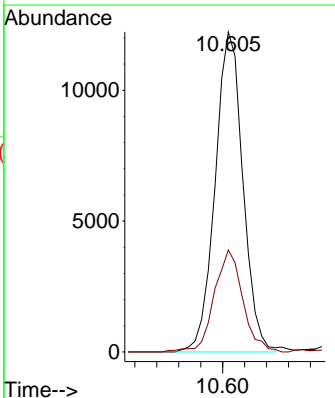
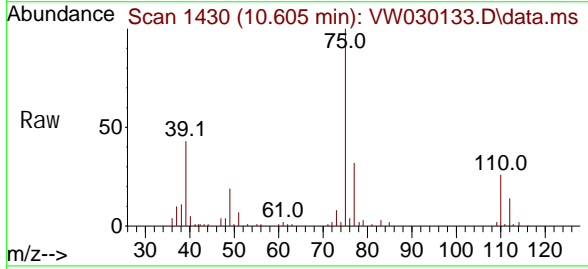
Instrument : MSVOA_W
 ClientSampleId :

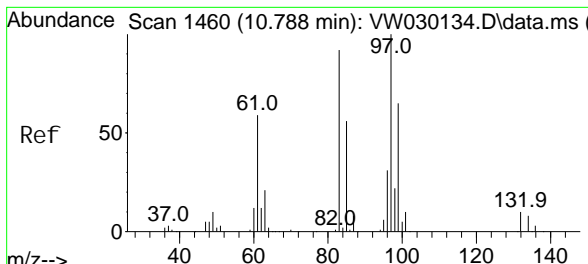
Tgt Ion: 91 Resp: 76354
 Ion Ratio Lower Upper
 91 100
 92 49.7 40.7 75.5



#44
 trans-1, 3-Di chl oroprene
 Concen: 4.488 ug/L
 RT: 10.605 min Scan# 1430
 Delta R.T. 0.000 min
 Lab File: VW030133.D
 Acq: 16 Sep 2024 14:57

Tgt Ion: 75 Resp: 21473
 Ion Ratio Lower Upper
 75 100
 77 31.8 21.2 39.4



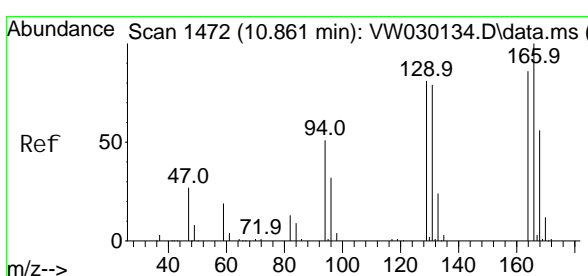
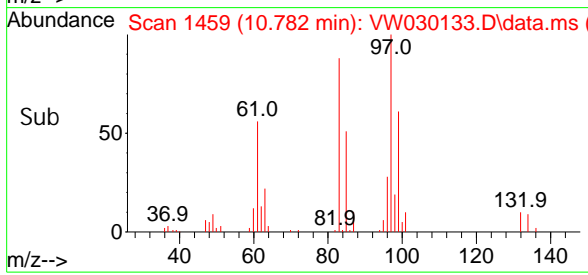
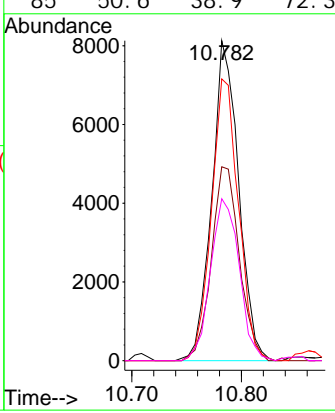
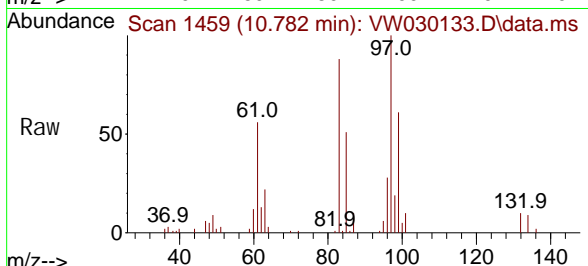


#45
 1,1,2-Trichloroethane
 Concen: 4.880 ug/L
 RT: 10.782 min Scan# 1459
 Delta R.T. -0.006 min
 Lab File: VW030133.D
 Acq: 16 Sep 2024 14:57

Instrument : MSVOA_W
 ClientSampleId :

Tgt Ion: 97 Resp: 13807

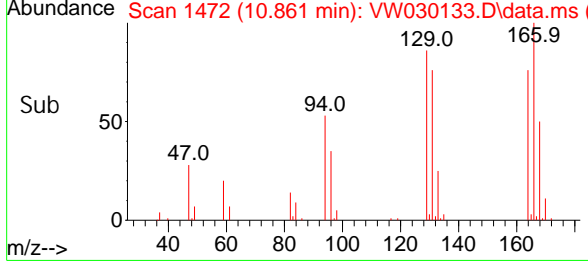
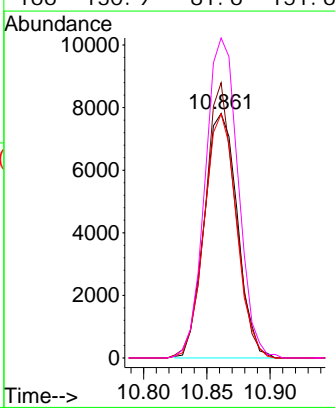
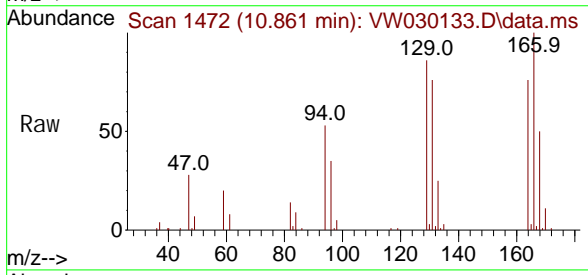
Ion	Ratio	Lower	Upper
97	100		
99	60.6	45.6	84.8
83	88.1	64.0	119.0
85	50.6	38.9	72.3

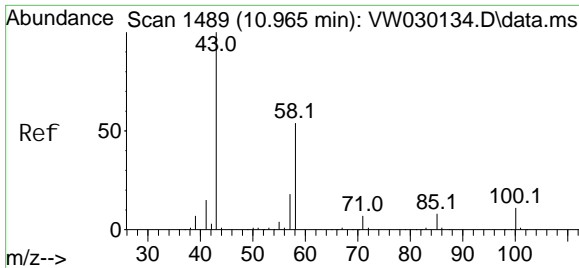


#46
 Tetrachloroethene
 Concen: 4.979 ug/L
 RT: 10.861 min Scan# 1472
 Delta R.T. 0.000 min
 Lab File: VW030133.D
 Acq: 16 Sep 2024 14:57

Tgt Ion: 164 Resp: 14227

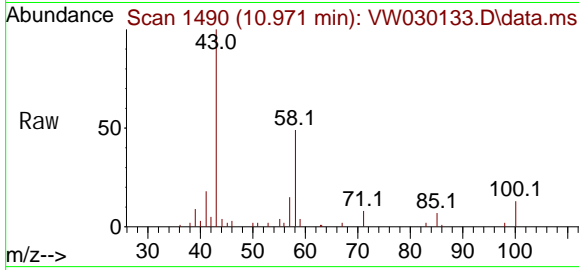
Ion	Ratio	Lower	Upper
164	100		
129	112.6	66.0	122.6
131	99.8	64.8	120.4
166	130.9	81.6	151.6





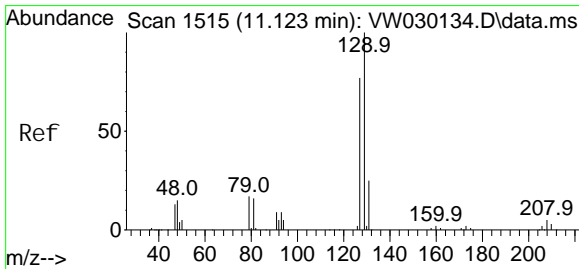
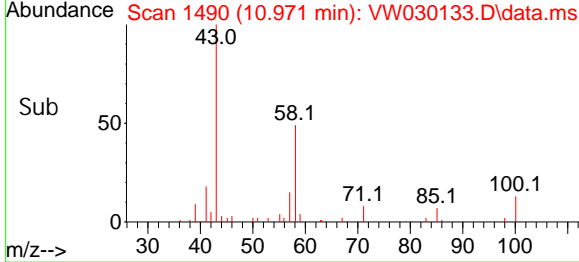
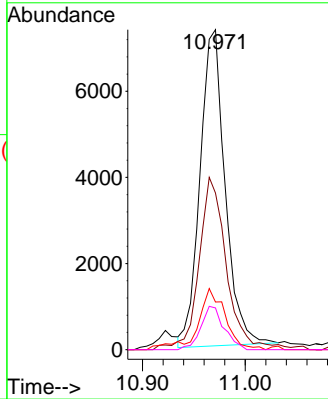
#48
 2-Hexanone
 Concen: 8.172 ug/L
 RT: 10.971 min Scan# 1489
 Delta R.T. 0.006 min
 Lab File: VW030133.D
 Acq: 16 Sep 2024 14:57

Instrument : MSVOA_W
 ClientSampleId :

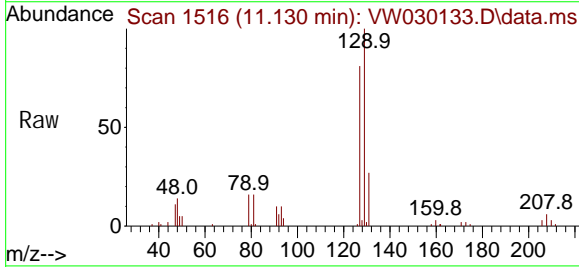


Tgt Ion: 43 Resp: 12485

Ion	Ratio	Lower	Upper
43	100		
58	54.6	44.8	67.2
57	18.8	15.4	23.2
100	12.7	9.6	14.4

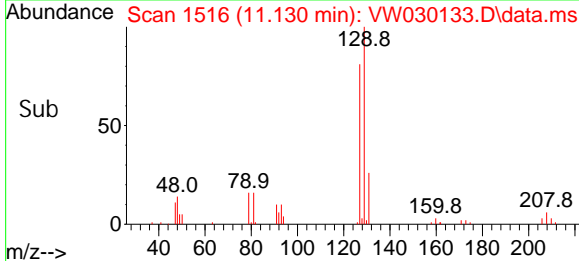
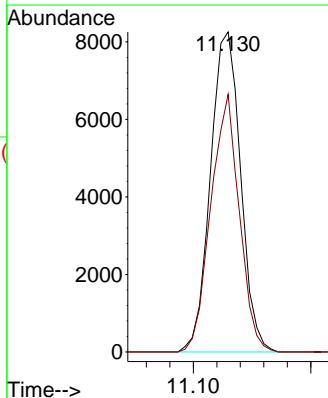


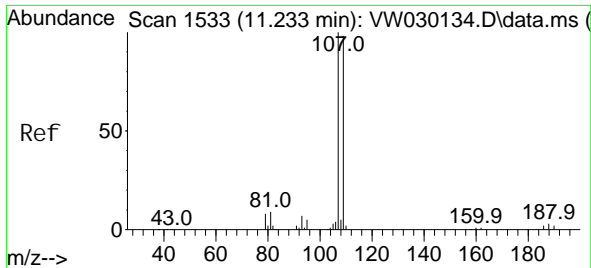
#49
 Di bromochloromethane
 Concen: 4.776 ug/L
 RT: 11.130 min Scan# 1516
 Delta R.T. 0.006 min
 Lab File: VW030133.D
 Acq: 16 Sep 2024 14:57



Tgt Ion: 129 Resp: 14706

Ion	Ratio	Lower	Upper
129	100		
127	80.5	54.2	100.6



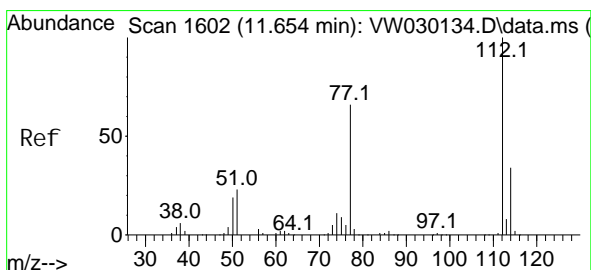
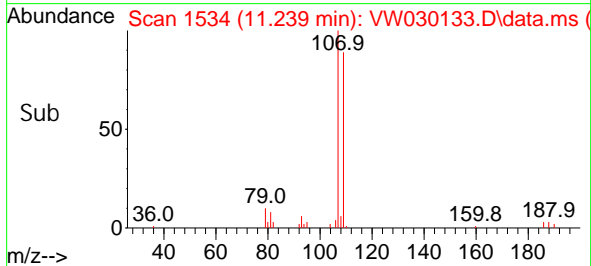
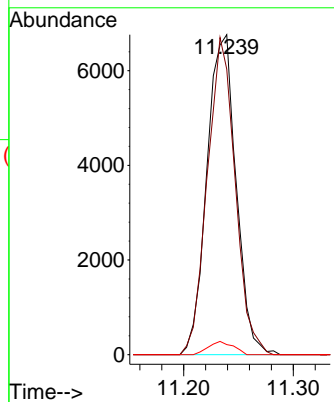
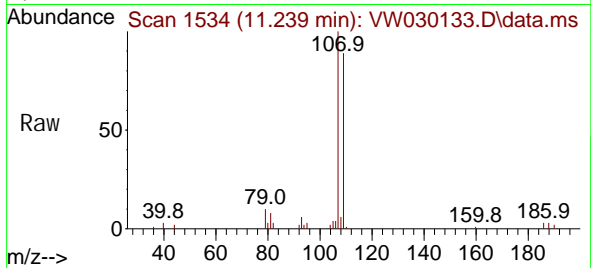


#50
 1, 2-Di bromoethane
 Concen: 4.804 ug/L
 RT: 11.239 min Scan# 1534
 Delta R.T. 0.006 min
 Lab File: VW030133.D
 Acq: 16 Sep 2024 14:57

Instrument : MSVOA_W
 ClientSampleId :

Tgt Ion: 107 Resp: 12531

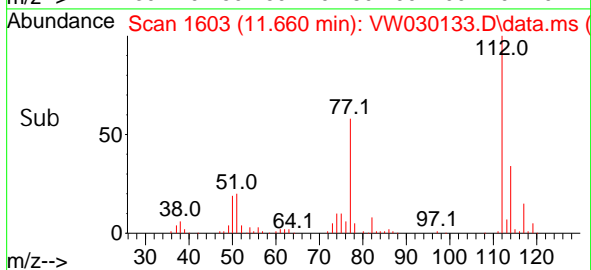
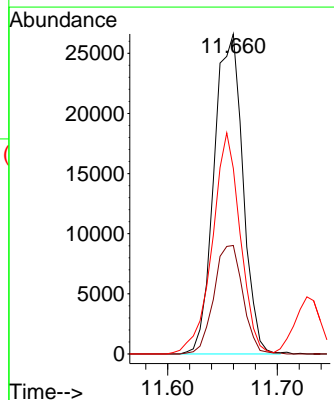
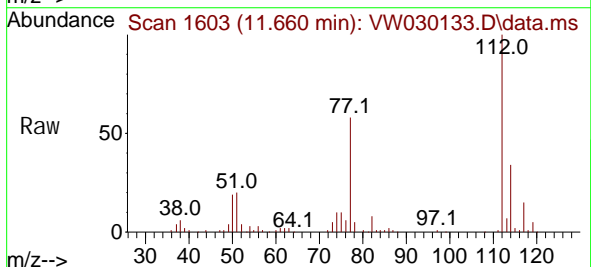
Ion	Ratio	Lower	Upper
107	100		
109	89.2	68.7	127.7
188	3.2	2.6	4.0

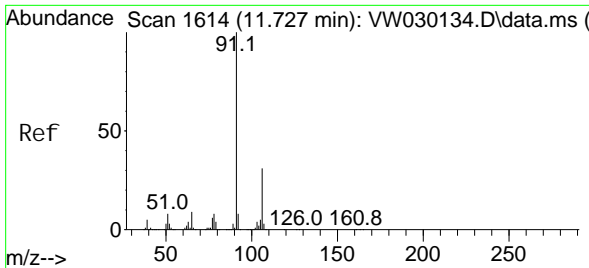


#51
 Chlorobenzene
 Concen: 4.932 ug/L
 RT: 11.660 min Scan# 1603
 Delta R.T. 0.006 min
 Lab File: VW030133.D
 Acq: 16 Sep 2024 14:57

Tgt Ion: 112 Resp: 48486

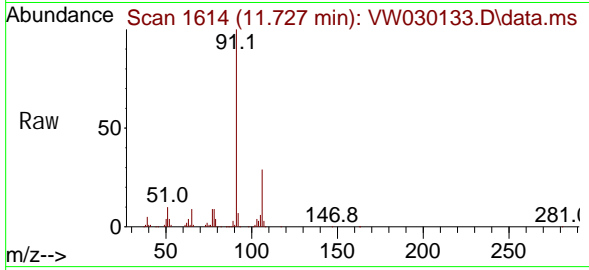
Ion	Ratio	Lower	Upper
112	100		
114	33.9	23.8	44.2
77	58.0	52.9	79.3



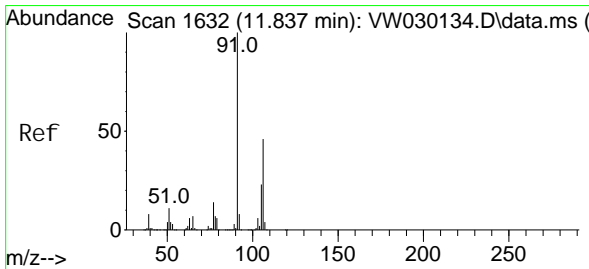
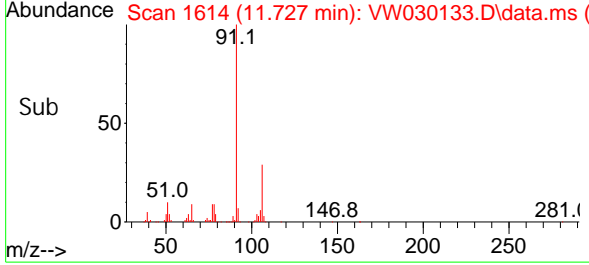
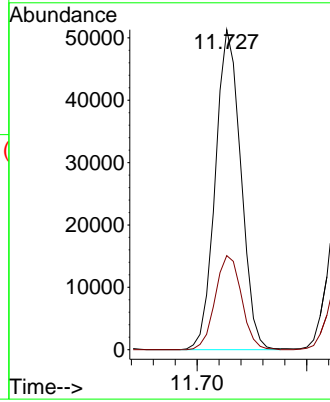


#52
 Ethyl benzene
 Concen: 4.766 ug/L
 RT: 11.727 min Scan# 1614
 Delta R.T. 0.000 min
 Lab File: VW030133.D
 Acq: 16 Sep 2024 14:57

Instrument : MSVOA_W
 ClientSampleId :

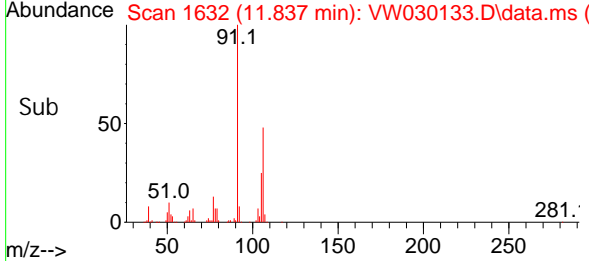
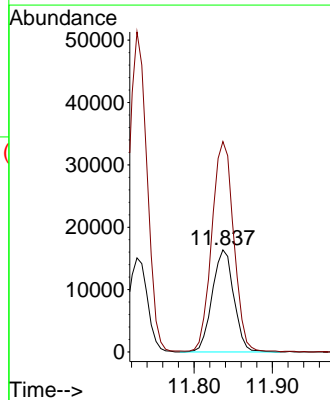
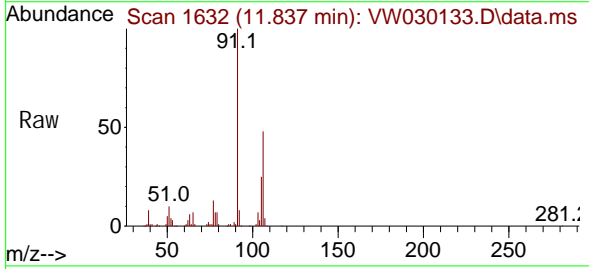


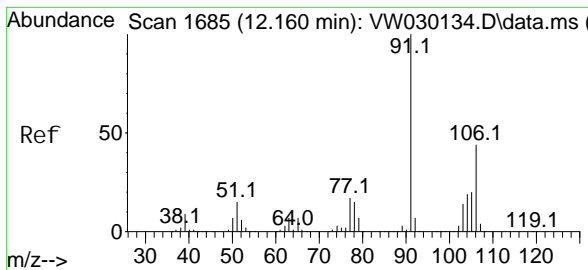
Tgt Ion: 91 Resp: 83033
 Ion Ratio Lower Upper
 91 100
 106 29.4 21.9 40.7



#53
 m, p-Xylene
 Concen: 4.881 ug/L
 RT: 11.837 min Scan# 1632
 Delta R.T. 0.000 min
 Lab File: VW030133.D
 Acq: 16 Sep 2024 14:57

Tgt Ion: 106 Resp: 31380
 Ion Ratio Lower Upper
 106 100
 91 206.3 152.9 283.9

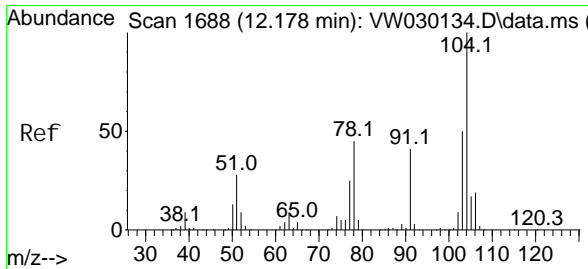
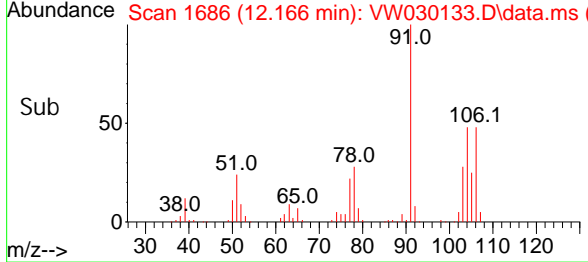
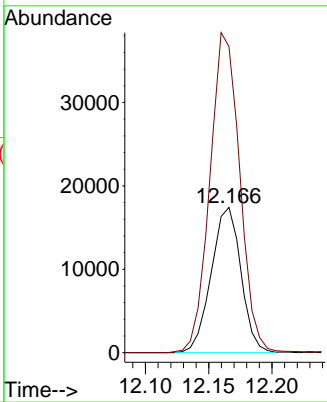
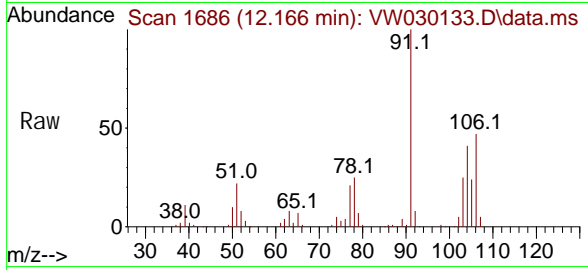




#54
 o-Xyl ene
 Concen: 4.706 ug/L
 RT: 12.166 min Scan# 1686
 Delta R.T. 0.006 min
 Lab File: VW030133.D
 Acq: 16 Sep 2024 14:57

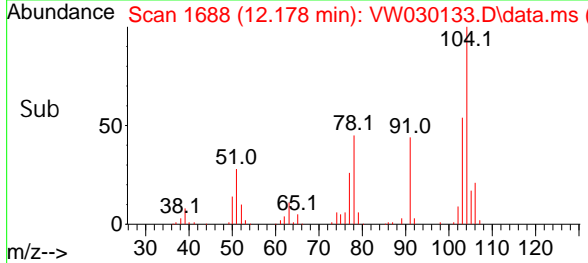
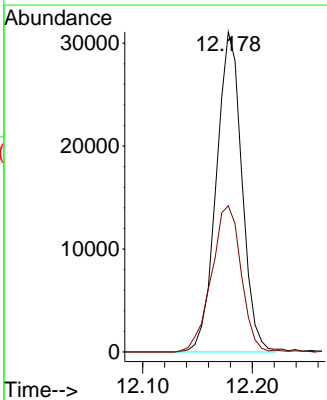
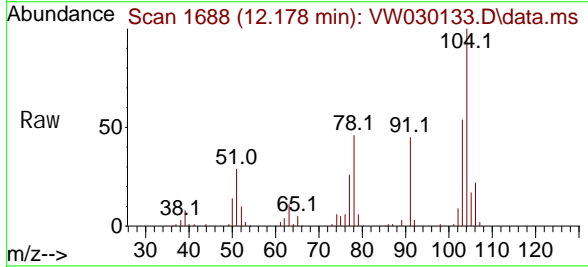
Instrument :
 MSVOA_W
 ClientSampleId :

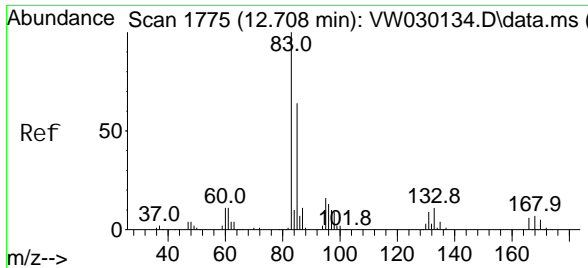
Tgt Ion: 106 Resp: 28466
 Ion Ratio Lower Upper
 106 100
 91 210.7 158.1 293.7



#55
 Styrene
 Concen: 4.804 ug/L
 RT: 12.178 min Scan# 1688
 Delta R.T. 0.000 min
 Lab File: VW030133.D
 Acq: 16 Sep 2024 14:57

Tgt Ion: 104 Resp: 50405
 Ion Ratio Lower Upper
 104 100
 78 45.7 31.4 58.2

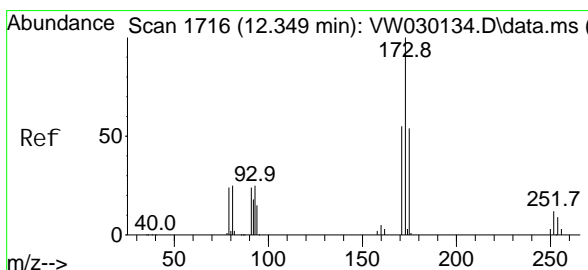
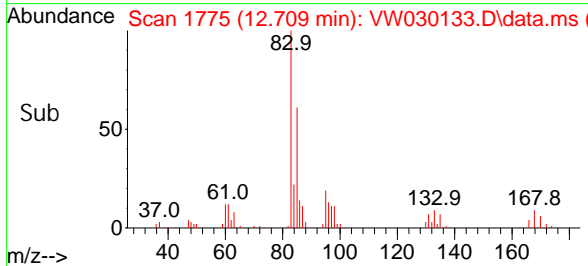
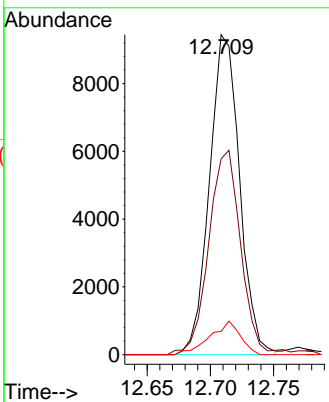
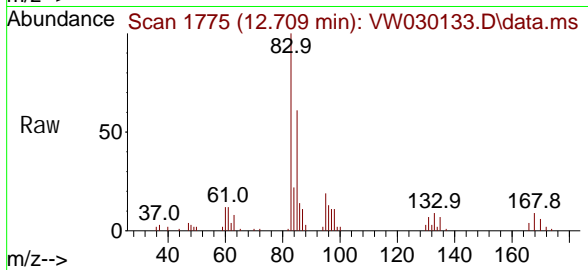




#57
 1, 1, 2-Tetrachloroethane
 Concen: 4.637 ug/L
 RT: 12.709 min Scan# 1775
 Delta R.T. 0.000 min
 Lab File: VW030133.D
 Acq: 16 Sep 2024 14:57

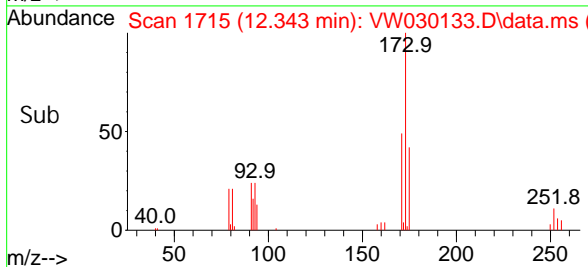
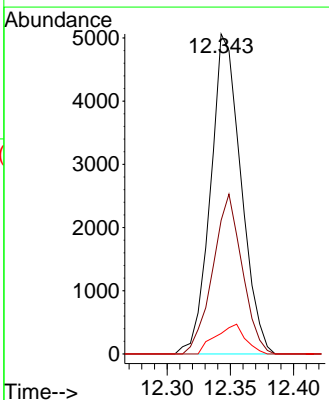
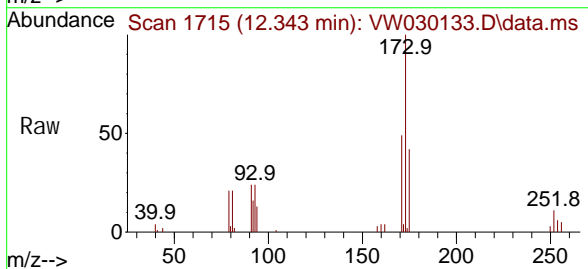
Instrument : MSVOA_W
 ClientSampleId :

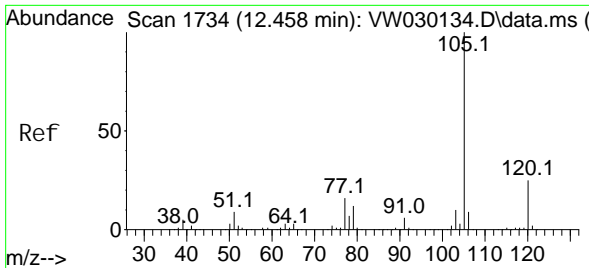
Tgt Ion	Resp	Lower	Upper
83	15659		
85	61.2	44.5	82.7
131	7.3	7.4	11.2#



#59
 Bromoform
 Concen: 4.836 ug/L
 RT: 12.343 min Scan# 1715
 Delta R.T. -0.006 min
 Lab File: VW030133.D
 Acq: 16 Sep 2024 14:57

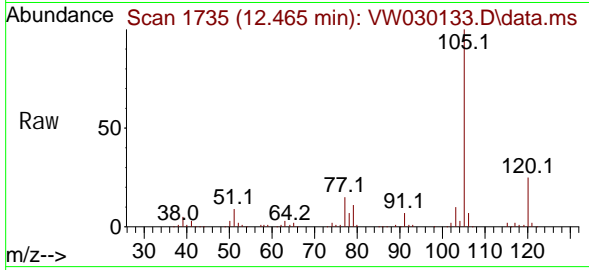
Tgt Ion	Resp	Lower	Upper
173	8452		
175	48.4	38.6	57.8
254	9.1	7.7	11.5





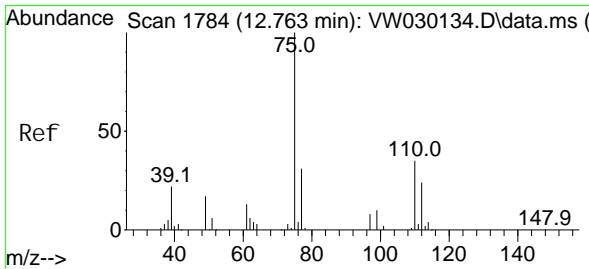
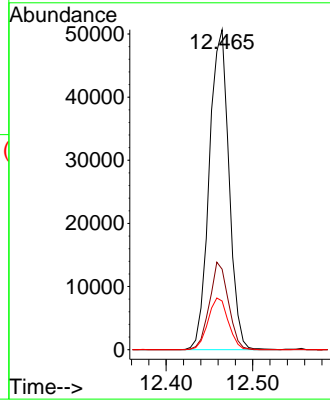
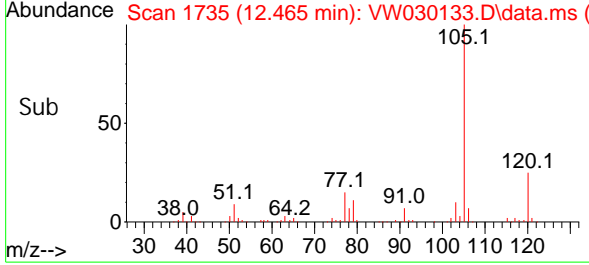
#60
 Isopropyl benzene
 Concen: 4.915 ug/L
 RT: 12.465 min Scan# 1735
 Delta R.T. 0.006 min
 Lab File: VW030133.D
 Acq: 16 Sep 2024 14:57

Instrument :
 MSVOA_W
 ClientSampleId :

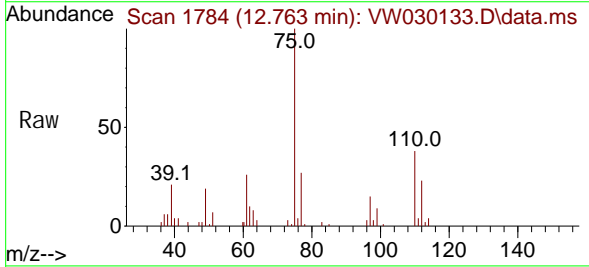


Tgt Ion: 105 Resp: 79924

Ion	Ratio	Lower	Upper
105	100		
120	26.3	20.2	30.2
77	16.6	13.0	19.4

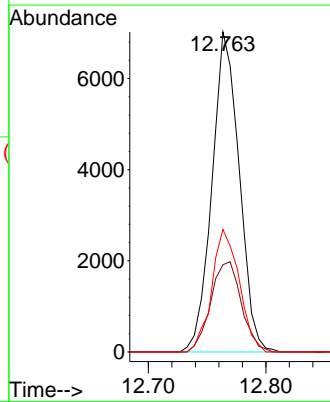
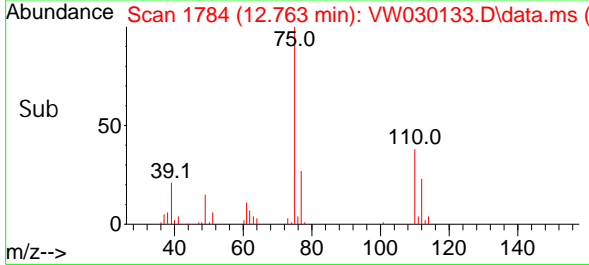


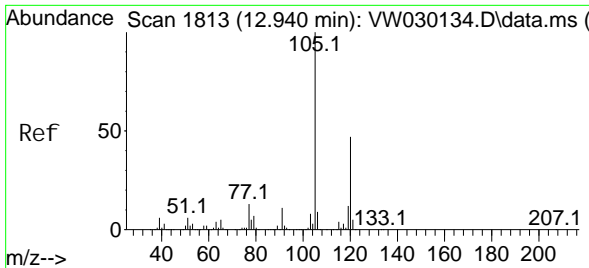
#61
 1,2,3-Trichloropropane
 Concen: 4.921 ug/L
 RT: 12.763 min Scan# 1784
 Delta R.T. 0.000 min
 Lab File: VW030133.D
 Acq: 16 Sep 2024 14:57



Tgt Ion: 75 Resp: 11306

Ion	Ratio	Lower	Upper
75	100		
77	31.7	26.2	39.2
110	38.6	29.7	44.5

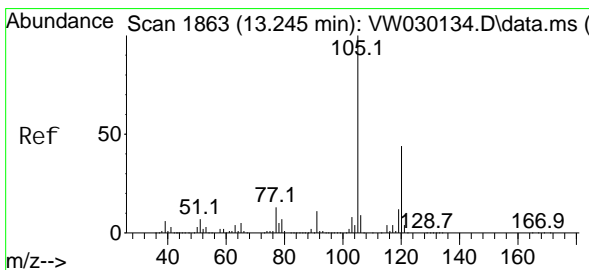
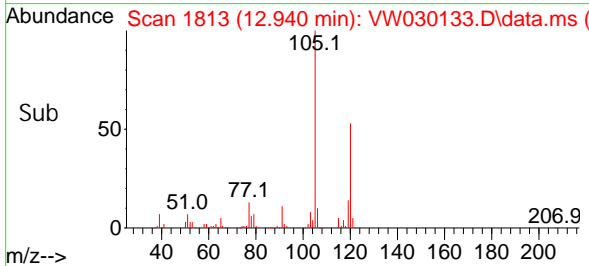
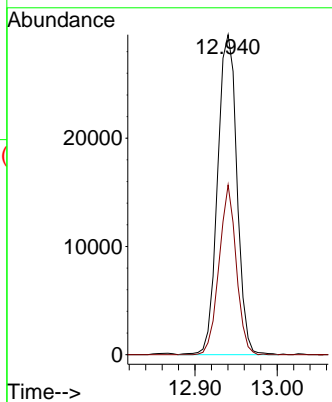
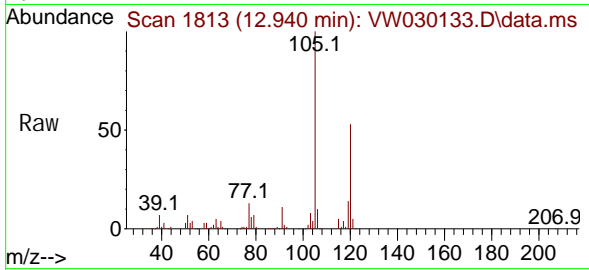




#62
 1, 3, 5-Tri methyl benzene
 Concen: 4.060 ug/L
 RT: 12.940 min Scan# 1813
 Delta R.T. 0.000 min
 Lab File: VW030133.D
 Acq: 16 Sep 2024 14:57

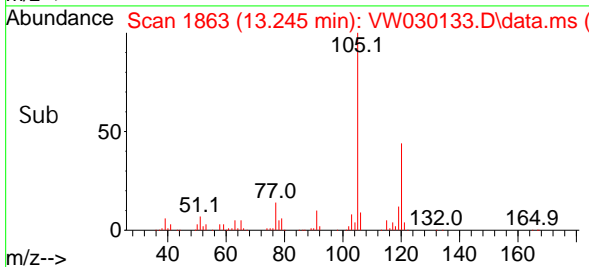
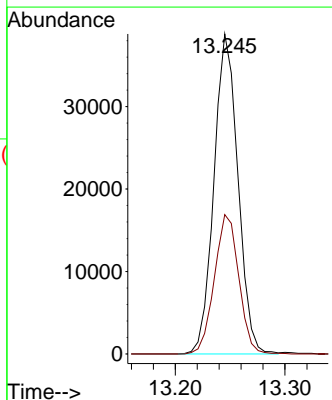
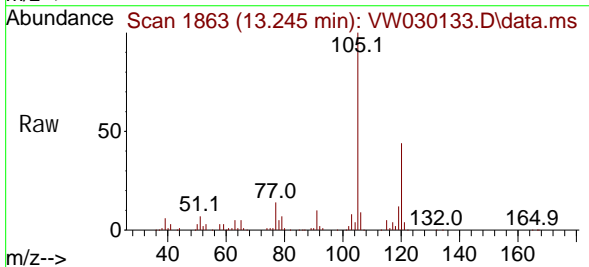
Instrument : MSVOA_W
 ClientSampleId :

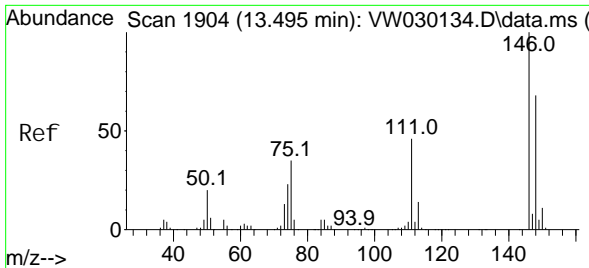
Tgt Ion: 105 Resp: 48388
 Ion Ratio Lower Upper
 105 100
 120 47.0 37.3 55.9



#63
 1, 2, 4-Tri methyl benzene
 Concen: 4.761 ug/L
 RT: 13.245 min Scan# 1863
 Delta R.T. 0.000 min
 Lab File: VW030133.D
 Acq: 16 Sep 2024 14:57

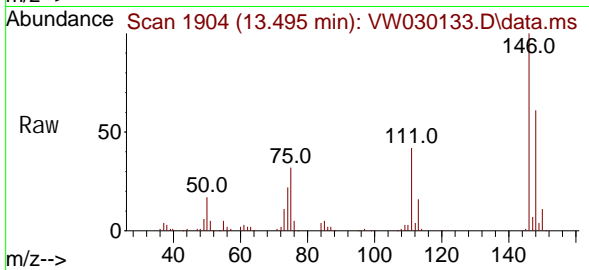
Tgt Ion: 105 Resp: 58990
 Ion Ratio Lower Upper
 105 100
 120 44.3 34.8 52.2



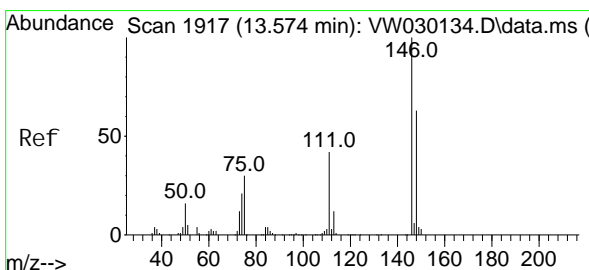
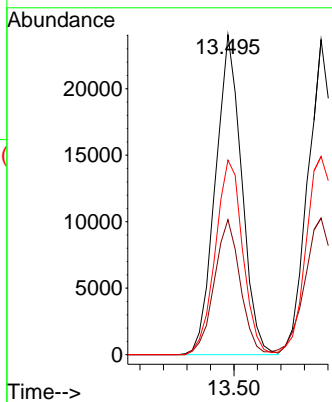
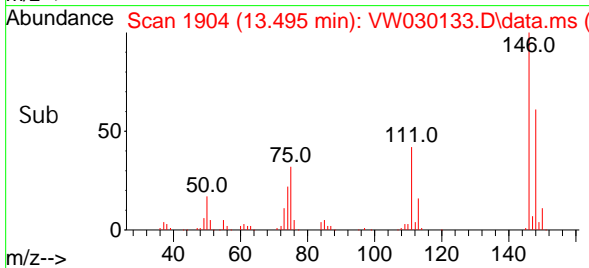


#64
 1,3-Dichlorobenzene
 Concen: 5.195 ug/L
 RT: 13.495 min Scan# 1904
 Delta R.T. 0.000 min
 Lab File: VW030133.D
 Acq: 16 Sep 2024 14:57

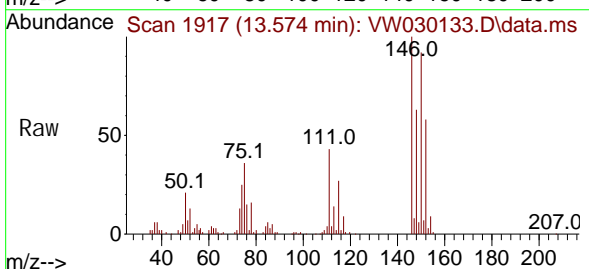
Instrument : MSVOA_W
 ClientSampleId :



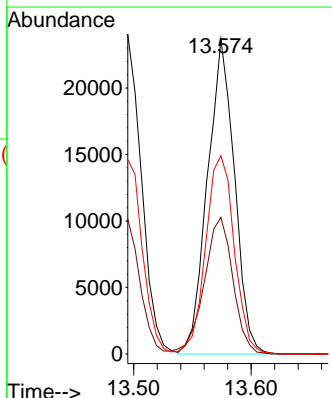
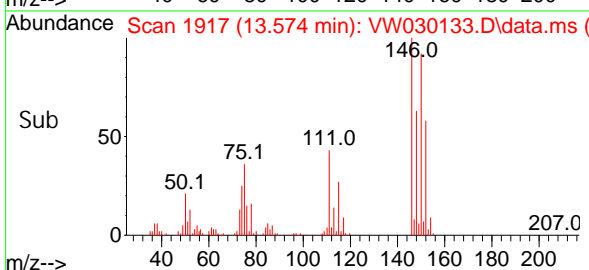
Tgt Ion: 146 Resp: 37434
 Ion Ratio Lower Upper
 146 100
 111 42.2 31.9 59.3
 148 60.8 47.7 88.5

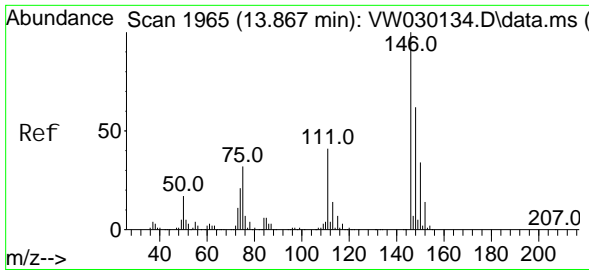


#65
 1,4-Dichlorobenzene
 Concen: 5.085 ug/L
 RT: 13.574 min Scan# 1917
 Delta R.T. 0.000 min
 Lab File: VW030133.D
 Acq: 16 Sep 2024 14:57



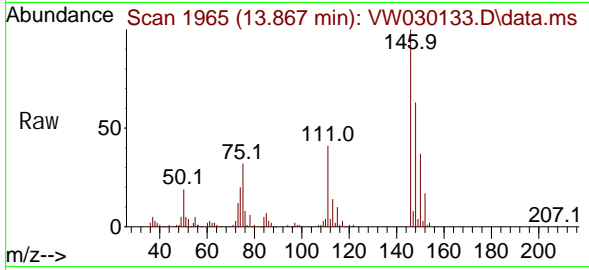
Tgt Ion: 146 Resp: 37857
 Ion Ratio Lower Upper
 146 100
 111 43.4 29.5 54.7
 148 62.9 44.4 82.5





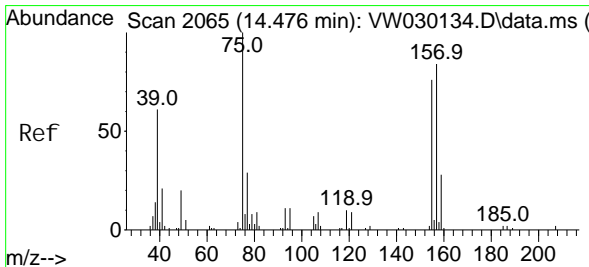
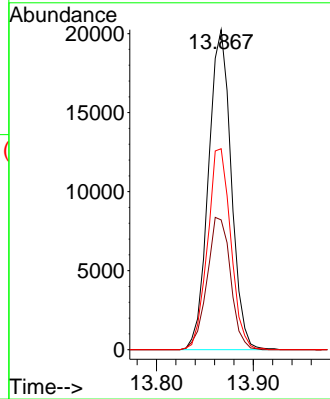
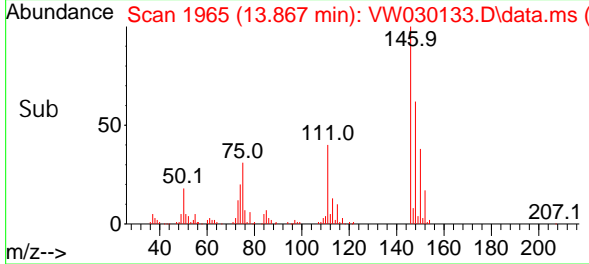
#67
 1, 2-Di chl orobenzene
 Concen: 5.102 ug/L
 RT: 13.867 min Scan# 1965
 Delta R.T. 0.000 min
 Lab File: VW030133.D
 Acq: 16 Sep 2024 14:57

Instrument : MSVOA_W
 ClientSampleId :

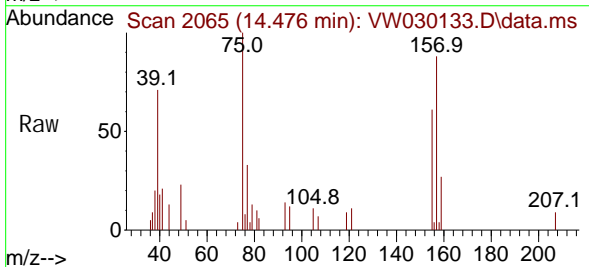


Tgt Ion: 146 Resp: 33134

Ion	Ratio	Lower	Upper
146	100		
111	40.5	32.7	49.1
148	62.8	49.8	74.6

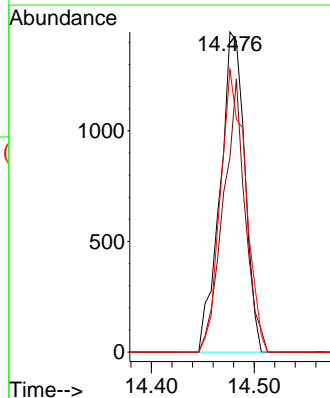
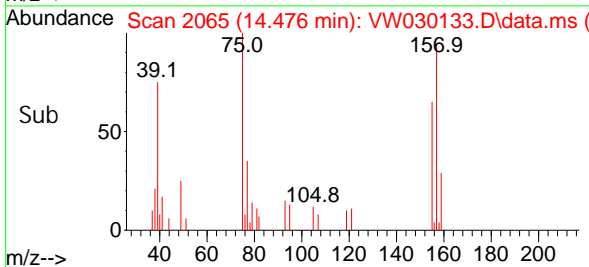


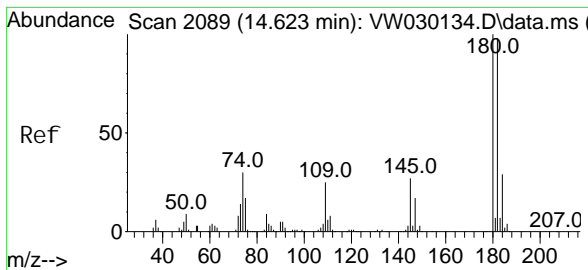
#68
 1, 2-Di bromo-3- chl oropropane
 Concen: 4.800 ug/L
 RT: 14.476 min Scan# 2065
 Delta R.T. 0.000 min
 Lab File: VW030133.D
 Acq: 16 Sep 2024 14:57



Tgt Ion: 75 Resp: 2405

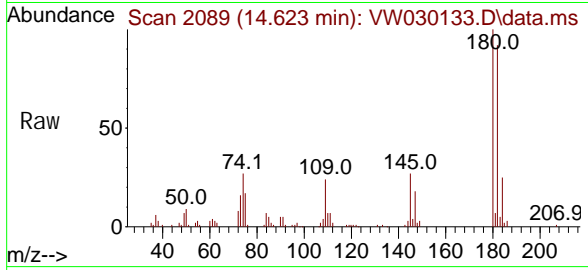
Ion	Ratio	Lower	Upper
75	100		
155	60.7	60.5	90.7
157	88.2	66.9	100.3





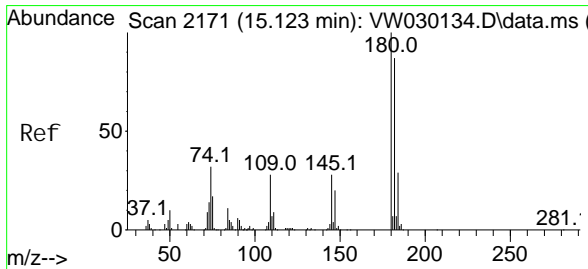
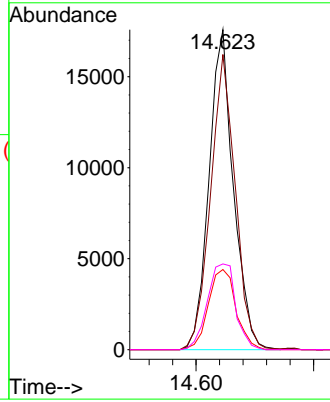
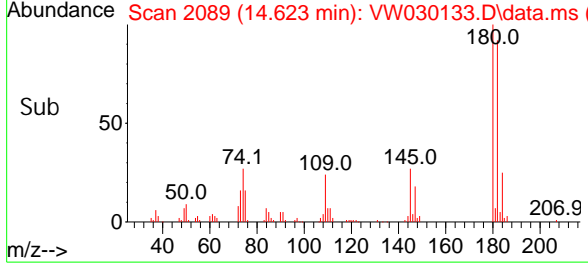
#69
 1, 3, 5-Tri chlorobenzene
 Concen: 5.044 ug/L
 RT: 14.623 min Scan# 2089
 Delta R.T. 0.000 min
 Lab File: VW030133.D
 Acq: 16 Sep 2024 14:57

Instrument : MSVOA_W
 ClientSampleId :

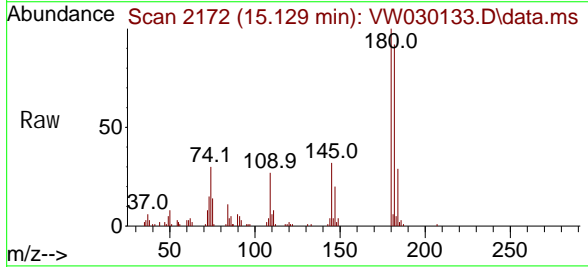


Tgt Ion: 180 Resp: 25369

Ion	Ratio	Lower	Upper
180	100		
182	93.2	75.5	113.3
184	28.3	23.4	35.0
145	31.1	22.6	34.0

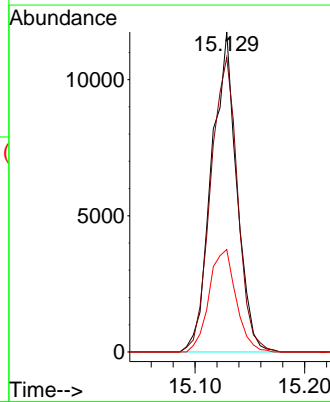
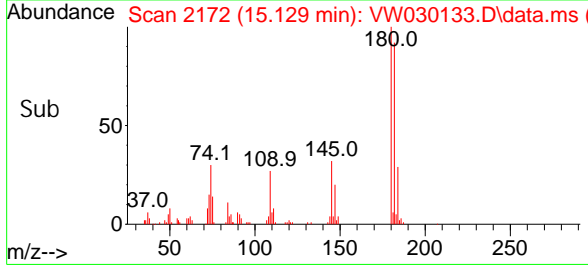


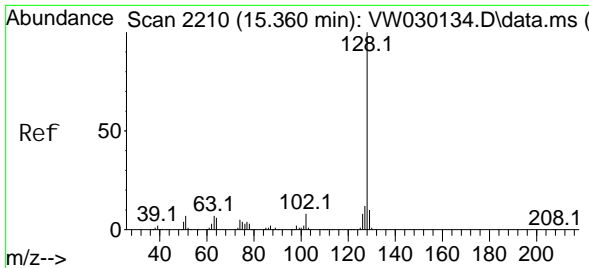
#70
 1, 2, 4-tri chlorobenzene
 Concen: 4.604 ug/L
 RT: 15.129 min Scan# 2172
 Delta R.T. 0.006 min
 Lab File: VW030133.D
 Acq: 16 Sep 2024 14:57



Tgt Ion: 180 Resp: 18760

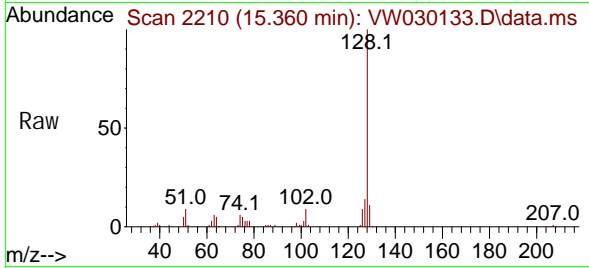
Ion	Ratio	Lower	Upper
180	100		
182	98.2	73.4	110.2
145	34.3	24.0	36.0



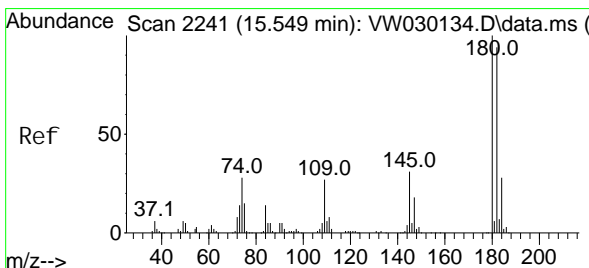
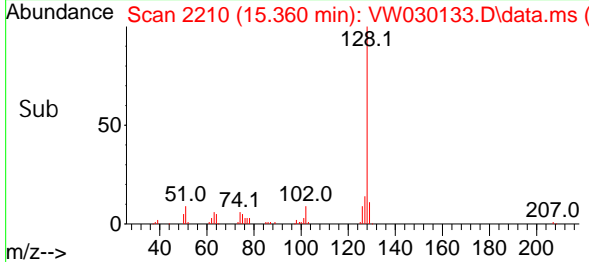
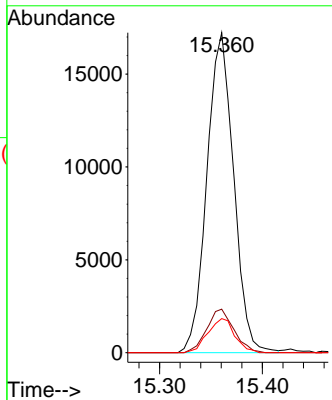


#71
 Naphthalene
 Concen: 4.210 ug/L
 RT: 15.360 min Scan# 2210
 Delta R.T. 0.000 min
 Lab File: VW030133.D
 Acq: 16 Sep 2024 14:57

Instrument : MSVOA_W
 ClientSampleId :



Tgt Ion: 128 Resp: 31149
 Ion Ratio Lower Upper
 128 100
 127 13.8 10.1 15.1
 129 10.7 8.4 12.6



#72
 1,2,3-Trichlorobenzene
 Concen: 4.797 ug/L
 RT: 15.549 min Scan# 2241
 Delta R.T. 0.000 min
 Lab File: VW030133.D
 Acq: 16 Sep 2024 14:57

Tgt Ion: 180 Resp: 17141
 Ion Ratio Lower Upper
 180 100
 182 101.4 76.4 114.6
 145 34.2 26.2 39.4

