

Data Path : Z:\voasrv\HPCHEM1\MSVOA_W\Data\VW092424\
 Data File : VW030227.D
 Acq On : 24 Sep 2024 16:26
 Operator : SY/MD
 Sample : VI BLK
 Mi sc : 5.00g/10mL/MSVOA_W/SOIL
 ALS Vial : 18 Sample Multiplier: 1

Instrument :
 MSVOA_W
ClientSampleId :

Quant Time: Sep 25 01:22:27 2024
 Quant Method : Z:\voasrv\HPCHEM1\MSVOA_W\Method\SFAMWLM091624SMA.M
 Quant Title : SFAM01.0
 QLast Update : Wed Sep 25 01:17:29 2024
 Response via : Initial Calibration

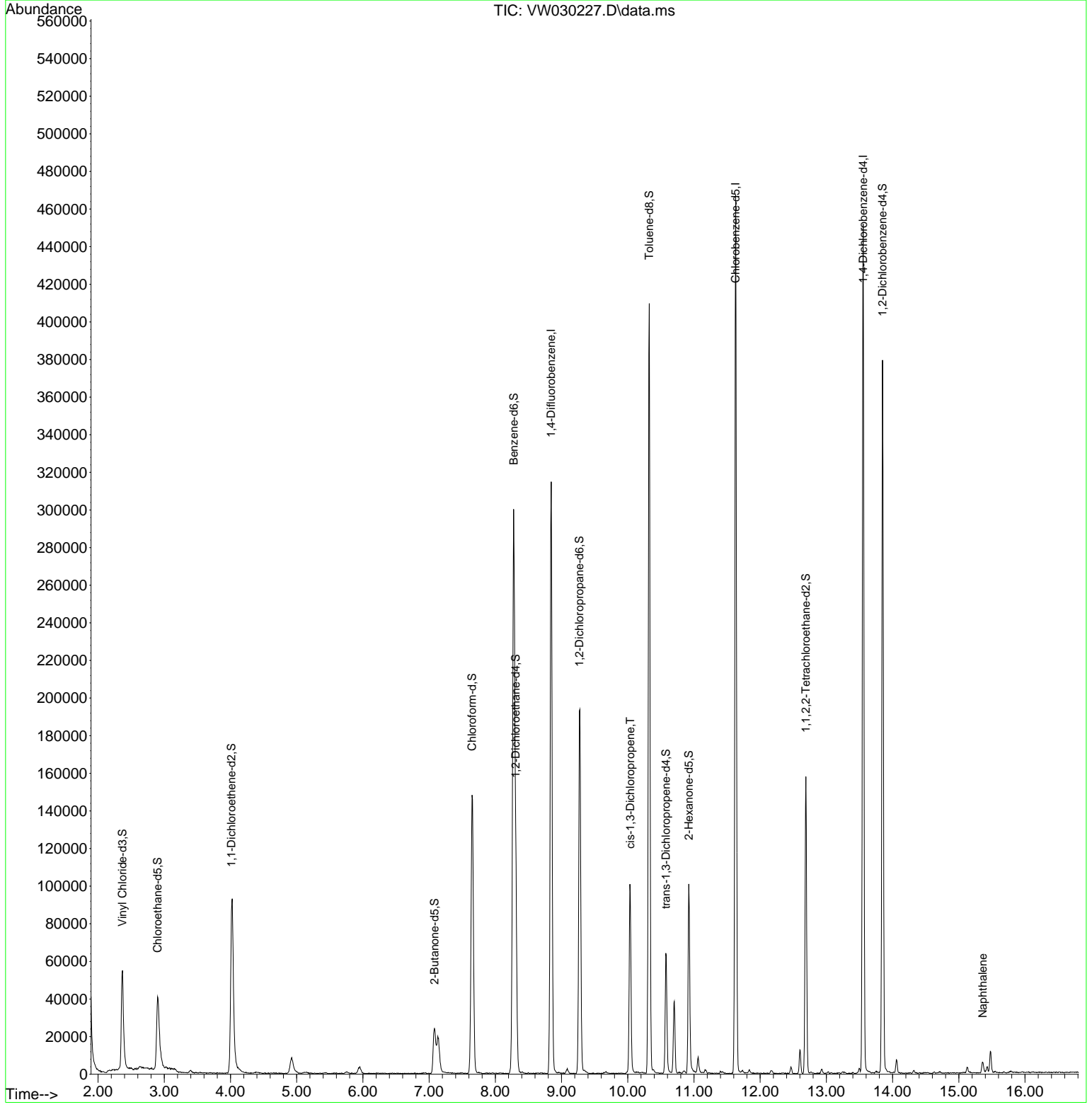
Compound	R. T.	QI on	Response	Conc	Units	Dev(Min)
Internal Standards						
1) 1,4-Difluorobenzene	8.843	114	257589	25.000	ug/L	0.00
28) Chlorobenzene-d5	11.629	117	252200	25.000	ug/L	0.00
58) 1,4-Dichlorobenzene-d4	13.556	152	117259	25.000	ug/L	0.00
System Monitoring Compounds						
4) Vinyl Chloride-d3	2.369	65	76853	23.103	ug/L	0.00
Spike Amount	25.000	Range	30 - 150	Recovery	=	92.400%
7) Chloroethane-d5	2.899	69	65825	28.029	ug/L	0.00
Spike Amount	25.000	Range	30 - 150	Recovery	=	112.120%
11) 1,1-Dichloroethane-d2	4.015	65	31207	18.776	ug/L	0.00
Spike Amount	25.000	Range	45 - 110	Recovery	=	75.120%
21) 2-Butanone-d5	7.081	46	41212	51.164	ug/L	0.00
Spike Amount	50.000	Range	20 - 135	Recovery	=	102.320%
24) Chloroform-d	7.648	84	153080	21.614	ug/L	0.00
Spike Amount	25.000	Range	40 - 150	Recovery	=	86.440%
26) 1,2-Dichloroethane-d4	8.307	65	84443	23.742	ug/L	0.00
Spike Amount	25.000	Range	70 - 130	Recovery	=	94.960%
32) Benzene-d6	8.276	84	296254	20.391	ug/L	0.00
Spike Amount	25.000	Range	20 - 135	Recovery	=	81.560%
36) 1,2-Dichloropropane-d6	9.270	67	91073	20.302	ug/L	0.00
Spike Amount	25.000	Range	70 - 120	Recovery	=	81.200%
41) Toluene-d8	10.325	98	267018	20.508	ug/L	0.00
Spike Amount	25.000	Range	30 - 130	Recovery	=	82.040%
43) trans-1,3-Dichloropropene	10.575	79	36033	20.050	ug/L	0.00
Spike Amount	25.000	Range	30 - 135	Recovery	=	80.200%
47) 2-Hexanone-d5	10.922	63	34134	49.727	ug/L	0.00
Spike Amount	50.000	Range	20 - 135	Recovery	=	99.460%
56) 1,1,2,2-Tetrachloroethane	12.690	84	78521	23.511	ug/L	0.00
Spike Amount	25.000	Range	45 - 120	Recovery	=	94.040%
66) 1,2-Dichlorobenzene-d4	13.849	152	94223	23.671	ug/L	0.00
Spike Amount	25.000	Range	75 - 120	Recovery	=	94.680%
Target Compounds						
39) cis-1,3-Dichloropropene	10.038	75	2755	0.451	ug/L #	77
71) Naphthalene	15.360	128	4979	0.634	ug/L #	92

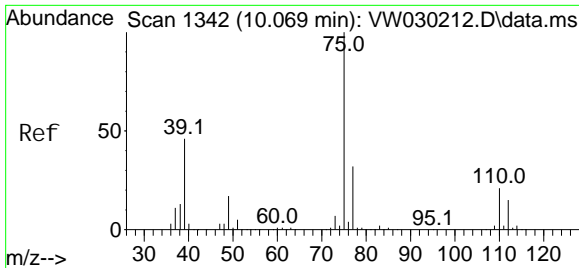
(#) = qualifier out of range (m) = manual integration (+) = signals summed

Data Path : Z:\voasrv\HPCHEM1\MSVOA_W\Data\VW092424\
 Data File : VW030227.D
 Acq On : 24 Sep 2024 16:26
 Operator : SY/MD
 Sample : VI BLK
 Misc : 5.00g/10mL/MSVOA_W/SOIL
 ALS Vial : 18 Sample Multiplier: 1

Instrument :
 MSVOA_W
 ClientSampleId :

Quant Time: Sep 25 01:22:27 2024
 Quant Method : Z:\voasrv\HPCHEM1\MSVOA_W\Method\SFAMWLM091624SMA.M
 Quant Title : SFAM01.0
 QLast Update : Wed Sep 25 01:17:29 2024
 Response via : Initial Calibration

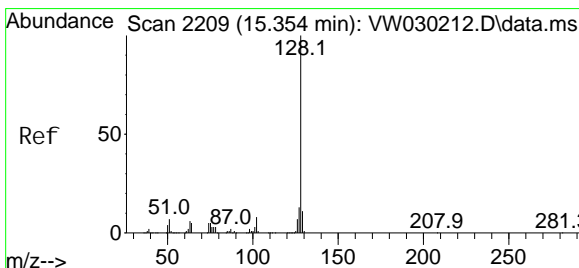
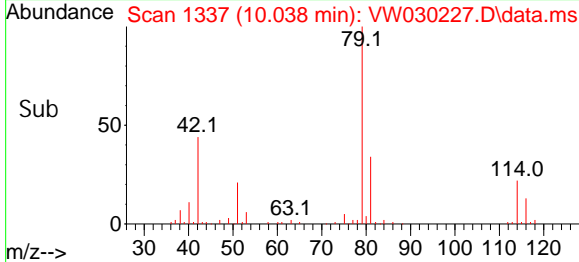
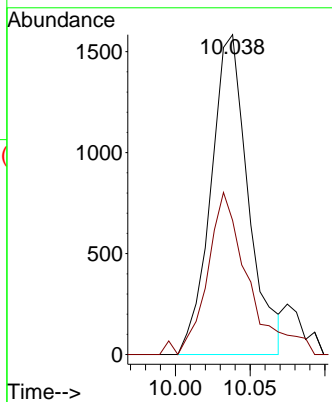
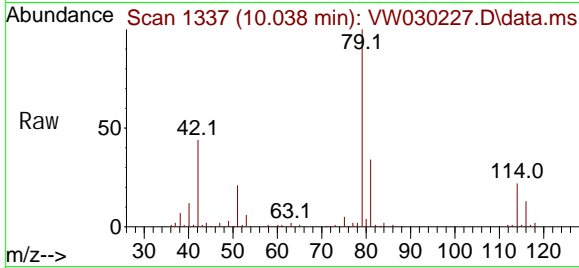




#39
 ci s-1, 3-Di chl oropropene
 Concen: 0.451 ug/L
 RT: 10.038 min Scan# 11
 Delta R.T. -0.030 min
 Lab File: VW030227.D
 Acq: 24 Sep 2024 16:26

Instrument :
 MSVOA_W
 ClientSampleId :

Tgt Ion: 75 Resp: 2755
 Ion Ratio Lower Upper
 75 100
 77 41.9 20.7 38.5#



#71
 Naphthalene
 Concen: 0.634 ug/L
 RT: 15.360 min Scan# 2210
 Delta R.T. 0.006 min
 Lab File: VW030227.D
 Acq: 24 Sep 2024 16:26

Tgt Ion: 128 Resp: 4979
 Ion Ratio Lower Upper
 128 100
 127 14.7 10.1 15.1
 129 6.6 8.4 12.6#

