

Data Path : Z:\voasrv\HPCHEM1\MSVOA_W\Data\VW092424\
 Data File : VW030227.D
 Acq On : 24 Sep 2024 16:26
 Operator : SY/MD
 Sample : VIBLK528
 Misc : 5.00g/10mL/MSVOA_W/SOIL
 ALS Vial : 18 Sample Multiplier: 1

Instrument :
 MSVOA_W
 ClientSampleId :
 VIBLK528

Integration Parameters: LSCINT.P

Integrator: RTE
 Smoothing : OFF
 Sampling : 1
 Start Thrs: 0.2
 Stop Thrs : 0
 Filtering: 5
 Min Area: 0 % of largest Peak
 Max Peaks: 100
 Peak Location: TOP

If leading or trailing edge < 100 prefer < Baseline drop else tangent >
 Peak separation: 5

Method : Z:\voasrv\HPCHEM1\MSVOA_W\Method\SFAMWLM091624SMA.M
 Title : SFAM01.0

Signal : TIC: VW030227.D\data.ms

peak #	R.T. min	first scan	max scan	last scan	PK TY	peak height	corr. area	corr. % max.	% of total
1	2.369	72	79	92	rVB	51827	119075	13.65%	1.786%
2	2.899	159	166	184	rBV	37831	115653	13.26%	1.735%
3	3.478	259	261	263	rVB	405	274	0.03%	0.004%
4	3.747	302	305	309	rBV3	292	413	0.05%	0.006%
5	3.936	334	336	337	rBV	358	321	0.04%	0.005%
6	4.027	340	351	364	rBV2	92751	275952	31.64%	4.139%
7	4.509	428	430	432	rBV2	357	354	0.04%	0.005%
8	4.558	435	438	439	rBV	228	248	0.03%	0.004%
9	4.612	442	447	448	rBV2	300	388	0.04%	0.006%
10	4.692	457	460	461	rBV2	330	262	0.03%	0.004%
11	4.838	480	484	485	rBV3	233	257	0.03%	0.004%
12	4.923	485	498	516	rBV	8438	31610	3.62%	0.474%
13	5.045	516	518	521	rVB2	298	336	0.04%	0.005%
14	5.271	550	555	559	rBV3	329	548	0.06%	0.008%
15	5.533	596	598	600	rBV2	282	297	0.03%	0.004%
16	5.557	600	602	603	rVV	370	251	0.03%	0.004%
17	5.600	607	609	613	rBV3	425	497	0.06%	0.007%
18	5.679	620	622	625	rVB	355	300	0.03%	0.005%
19	5.759	627	635	639	rBV6	976	2504	0.29%	0.038%
20	5.832	644	647	651	rVB2	323	299	0.03%	0.004%
21	5.954	656	667	675	rVV4	3572	10501	1.20%	0.158%
22	6.204	705	708	709	rBV2	314	230	0.03%	0.003%
23	6.289	720	722	724	rBV	260	263	0.03%	0.004%
24	6.856	811	815	818	rBV2	255	427	0.05%	0.006%
25	6.911	822	824	826	rBV	491	437	0.05%	0.007%
26	7.081	843	852	857	rBV	23944	70694	8.10%	1.060%
27	7.350	895	896	899	rBV2	358	278	0.03%	0.004%
28	7.435	908	910	913	rVB3	322	304	0.03%	0.005%
29	7.466	913	915	916	rBV	338	260	0.03%	0.004%
30	7.545	926	928	930	rBV2	245	235	0.03%	0.004%
31	7.648	934	945	959	rBV	148118	370190	42.44%	5.553%
32	7.874	980	982	985	rVB2	442	256	0.03%	0.004%
33	7.953	992	995	996	rBV3	281	339	0.04%	0.005%
34	8.057	1009	1012	1013	rBV	281	210	0.02%	0.003%
35	8.276	1035	1048	1066	rBV2	300025	872243	100.00%	13.084%
36	8.496	1082	1084	1088	rBV2	472	421	0.05%	0.006%

Data Path : Z:\voasrv\HPCHEM1\MSVOA_W\Data\VW092424\
 Data File : VW030227.D
 Acq On : 24 Sep 2024 16:26
 Operator : SY/MD
 Sample : VIBLK528
 Misc : 5.00g/10mL/MSVOA_W/SOIL
 ALS Vial : 18 Sample Multiplier: 1

Instrument :
 MSVOA_W
 ClientSampleId :
 VIBLK528

Integration Parameters: LSCINT.P

Integrator: RTE
 Smoothing : OFF
 Sampling : 1
 Start Thrs: 0.2
 Stop Thrs : 0

Filtering: 5
 Min Area: 0 % of largest Peak
 Max Peaks: 100
 Peak Location: TOP

If leading or trailing edge < 100 prefer < Baseline drop else tangent >
 Peak separation: 5

Method : Z:\voasrv\HPCHEM1\MSVOA_W\Method\SFAMWLM091624SMA.M
 Title : SFAM01.0

37	8.575	1095	1097	1100	rVB	321	308	0.04%	0.005%
38	8.685	1113	1115	1116	rBV2	343	331	0.04%	0.005%
39	8.746	1122	1125	1127	rBV2	297	401	0.05%	0.006%
40	8.843	1132	1141	1154	rVV	314540	628619	72.07%	9.430%
41	9.020	1168	1170	1174	rVB2	382	456	0.05%	0.007%
42	9.087	1174	1181	1189	rBV7	2633	5313	0.61%	0.080%
43	9.276	1202	1212	1221	rBV	193620	401807	46.07%	6.027%
44	9.429	1236	1237	1241	rBV2	189	227	0.03%	0.003%
45	9.483	1244	1246	1249	rVB2	405	321	0.04%	0.005%
46	9.575	1260	1261	1265	rVB	254	229	0.03%	0.003%
47	9.636	1269	1271	1272	rBV	511	302	0.03%	0.005%
48	9.672	1272	1277	1282	rVB5	874	1435	0.16%	0.022%
49	9.868	1306	1309	1311	rBV2	306	232	0.03%	0.003%
50	9.898	1311	1314	1317	rBV3	347	368	0.04%	0.006%
51	10.032	1330	1336	1349	rVB	100265	184048	21.10%	2.761%
52	10.130	1349	1352	1353	rBV3	507	496	0.06%	0.007%
53	10.325	1376	1384	1392	rBV	409247	708157	81.19%	10.623%
54	10.495	1410	1412	1413	rBV2	341	260	0.03%	0.004%
55	10.575	1418	1425	1439	rVV	63882	117421	13.46%	1.761%
56	10.703	1439	1446	1454	rVB	38124	68290	7.83%	1.024%
57	10.776	1454	1458	1459	rBV4	596	587	0.07%	0.009%
58	10.849	1465	1470	1475	rBV8	1212	2748	0.32%	0.041%
59	10.922	1475	1482	1493	rBV	100607	175642	20.14%	2.635%
60	11.062	1500	1505	1511	rVB2	8100	13153	1.51%	0.197%
61	11.166	1520	1522	1529	rVB5	2009	3549	0.41%	0.053%
62	11.227	1529	1532	1535	rBV5	490	672	0.08%	0.010%
63	11.398	1558	1560	1563	rBV4	1009	1042	0.12%	0.016%
64	11.629	1590	1598	1610	rBV	466984	775337	88.89%	11.630%
65	11.837	1628	1632	1638	rVB4	1736	2621	0.30%	0.039%
66	11.892	1640	1641	1645	rVB	358	289	0.03%	0.004%
67	12.166	1680	1686	1692	rBV5	1506	3605	0.41%	0.054%
68	12.294	1704	1707	1708	rVB2	239	204	0.02%	0.003%
69	12.324	1710	1712	1713	rBV	315	274	0.03%	0.004%
70	12.465	1730	1735	1741	rBV4	3478	5395	0.62%	0.081%
71	12.599	1752	1757	1764	rVB3	12557	20319	2.33%	0.305%
72	12.690	1764	1772	1782	rBV	157857	262045	30.04%	3.931%
73	12.928	1807	1811	1820	rVB7	2363	4342	0.50%	0.065%
74	13.032	1824	1828	1830	rVB3	919	1245	0.14%	0.019%
75	13.062	1831	1833	1834	rBV	316	232	0.03%	0.003%
76	13.251	1858	1864	1866	rBV5	876	1446	0.17%	0.022%

Data Path : Z:\voasrv\HPCHEM1\MSVOA_W\Data\VW092424\
 Data File : VW030227.D
 Acq On : 24 Sep 2024 16:26
 Operator : SY/MD
 Sample : VIBLK528
 Misc : 5.00g/10mL/MSVOA_W/SOIL
 ALS Vial : 18 Sample Multiplier: 1

Instrument :
 MSVOA_W
 ClientSampleId :
 VIBLK528

Integration Parameters: LSCINT.P
 Integrator: RTE
 Smoothing : OFF
 Sampling : 1
 Start Thrs: 0.2
 Stop Thrs : 0
 Filtering: 5
 Min Area: 0 % of largest Peak
 Max Peaks: 100
 Peak Location: TOP

If leading or trailing edge < 100 prefer < Baseline drop else tangent >
 Peak separation: 5

Method : Z:\voasrv\HPCHEM1\MSVOA_W\Method\SFAMWLM091624SMA.M
 Title : SFAM01.0

77	13.397	1884	1888	1892	rBV3	668	989	0.11%	0.015%
78	13.495	1897	1904	1907	rBV4	2645	4403	0.50%	0.066%
79	13.556	1907	1914	1927	rVB	450785	724886	83.11%	10.874%
80	13.690	1934	1936	1939	rBV3	363	358	0.04%	0.005%
81	13.751	1942	1946	1947	rBV3	1133	1295	0.15%	0.019%
82	13.849	1955	1962	1974	rBV	378405	599566	68.74%	8.994%
83	14.056	1991	1996	2002	rVV2	6999	11797	1.35%	0.177%
84	14.129	2006	2008	2011	rBV2	404	365	0.04%	0.005%
85	14.269	2028	2031	2034	rVB2	398	363	0.04%	0.005%
86	14.324	2034	2040	2046	rBV5	1550	2869	0.33%	0.043%
87	14.403	2049	2053	2056	rBV2	411	603	0.07%	0.009%
88	14.470	2062	2064	2066	rBV2	566	535	0.06%	0.008%
89	14.495	2066	2068	2070	rVB2	359	339	0.04%	0.005%
90	14.629	2086	2090	2093	rBV3	790	1172	0.13%	0.018%
91	14.702	2100	2102	2103	rBV2	593	396	0.05%	0.006%
92	14.830	2121	2123	2124	rBV2	300	226	0.03%	0.003%
93	15.068	2159	2162	2163	rBV3	448	452	0.05%	0.007%
94	15.123	2167	2171	2178	rBV4	2959	5360	0.61%	0.080%
95	15.360	2204	2210	2215	rBV2	5806	12212	1.40%	0.183%
96	15.428	2217	2221	2224	rVV3	3233	5421	0.62%	0.081%
97	15.476	2224	2229	2236	rVB	11278	20244	2.32%	0.304%
98	15.684	2259	2263	2266	rBV3	603	895	0.10%	0.013%
99	15.763	2274	2276	2277	rBV	516	380	0.04%	0.006%
100	16.263	2356	2358	2362	rBV3	374	461	0.05%	0.007%

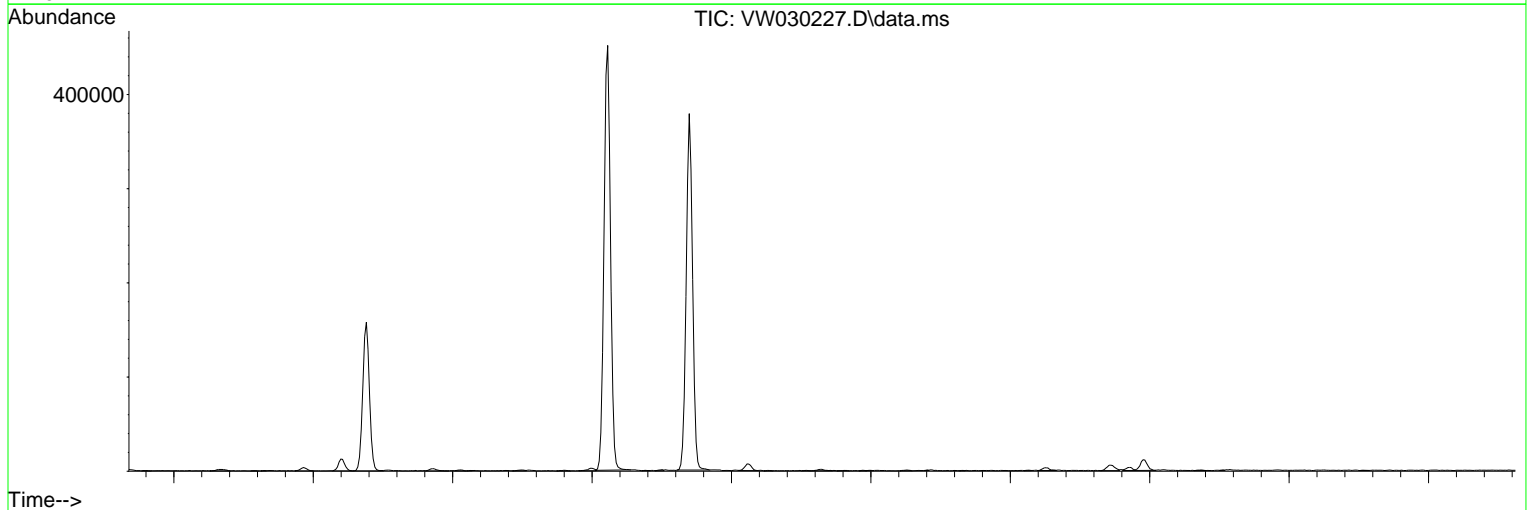
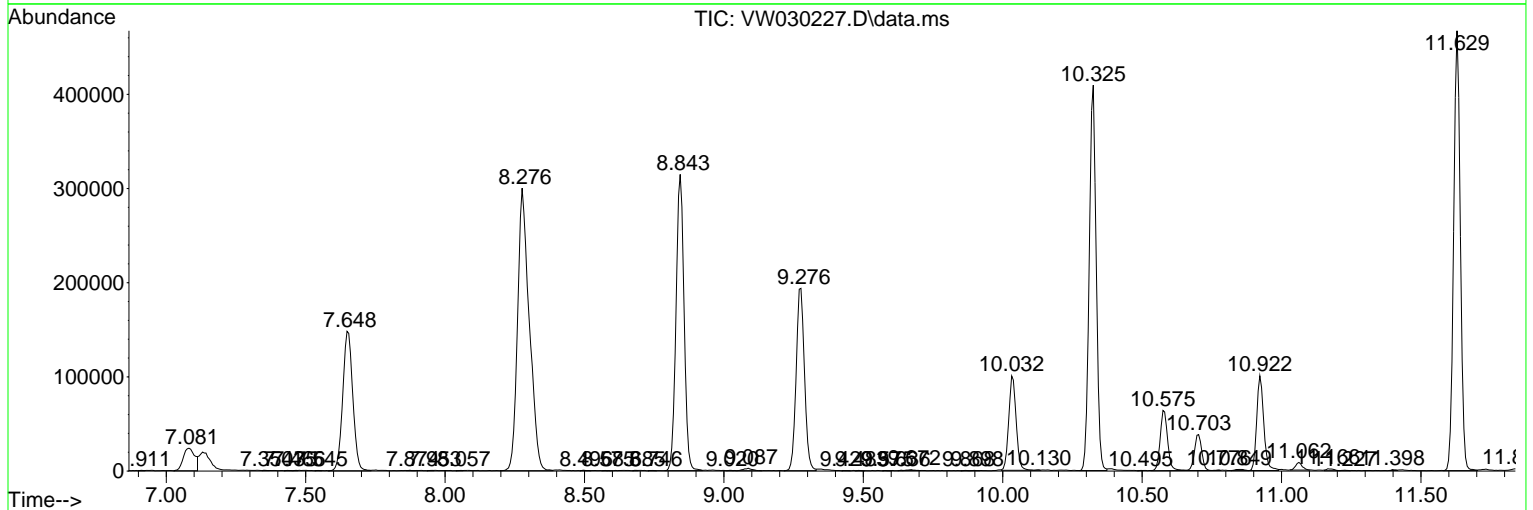
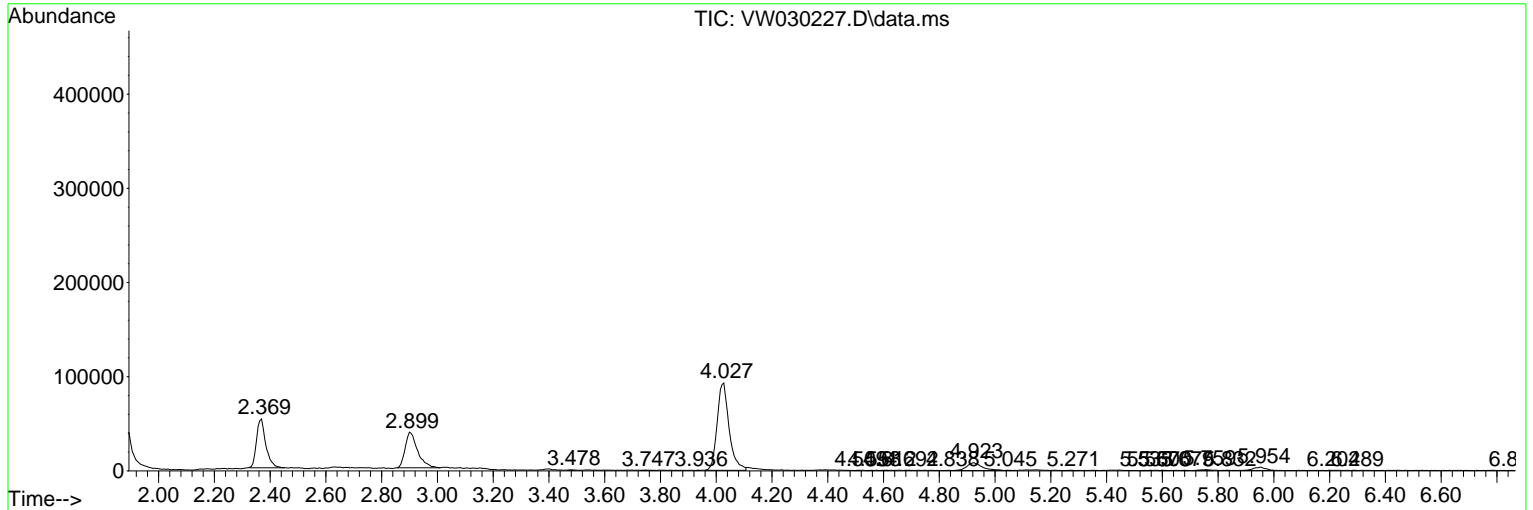
Sum of corrected areas: 6666482

Data Path : Z:\voasrv\HPCHEM1\MSVOA_W\Data\VW092424\
 Data File : VW030227.D
 Acq On : 24 Sep 2024 16:26
 Operator : SY/MD
 Sample : VIBLK528
 Misc : 5.00g/10mL/MSVOA_W/SOIL
 ALS Vial : 18 Sample Multiplier: 1

Instrument :
 MSVOA_W
 ClientSampleId :
 VIBLK528

Quant Method : Z:\voasrv\HPCHEM1\MSVOA_W\Method\SFAMWLM091624SMA.M
 Quant Title : SFAM01.0

TIC Library : C:\Database\NIST20.L
 TIC Integration Parameters: LSCINT.P



Library Search Compound Report

Data Path : Z:\voasrv\HPCHEM1\MSVOA_W\Data\VW092424\
Data File : VW030227.D
Acq On : 24 Sep 2024 16:26
Operator : SY/MD
Sample : VI BLK528
Misc : 5.00g/10mL/MSVOA_W/SOIL
ALS Vial : 18 Sample Multiplier: 1

Instrument :
MSVOA_W
ClientSampleId :
VI BLK528

Quant Method : Z:\voasrv\HPCHEM1\MSVOA_W\Method\SFAMWLM091624SMA.M
Quant Title : SFAM01.0

TIC Library : C:\Database\NIST20.L
TIC Integration Parameters: LSCINT.P

No Library Search Compounds Detected

Data Path : Z:\voasrv\HPCHEM1\MSVOA_W\Data\VW092424\
Data File : VW030227.D
Acq On : 24 Sep 2024 16:26
Operator : SY/MD
Sample : VIBLK528
Misc : 5.00g/10mL/MSVOA_W/SOIL
ALS Vial : 18 Sample Multiplier: 1

Instrument :
MSVOA_W
ClientSampleId :
VIBLK528

Quant Method : Z:\voasrv\HPCHEM1\MSVOA_W\Method\SFAMWLM091624SMA.M
Quant Title : SFAM01.0

TIC Library : C:\Database\NIST0.L
TIC Integration Parameters: LSCINT.P

TIC Top Hit name	RT	EstConc	Units	Response	#	RT	Resp	Conc
------------------	----	---------	-------	----------	---	----	------	------
