

Data Path : Z:\voasrv\HPCHEM1\MSVOA_W\Data\VW092624\
 Data File : VW030270.D
 Acq On : 26 Sep 2024 19:44
 Operator : SY/MD
 Sample : P4183-15
 Misc : 5.14g/10mL/MSVOA_W/SOIL/A
 ALS Vial : 24 Sample Multiplier: 1

Instrument :
 MSVOA_W
ClientSampleId :

Quant Time: Sep 27 04:42:24 2024
 Quant Method : Z:\voasrv\HPCHEM1\MSVOA_W\Method\SFAMWLM092624SMA.M
 Quant Title : SFAM01.0
 QLast Update : Fri Sep 27 04:39:02 2024
 Response via : Initial Calibration

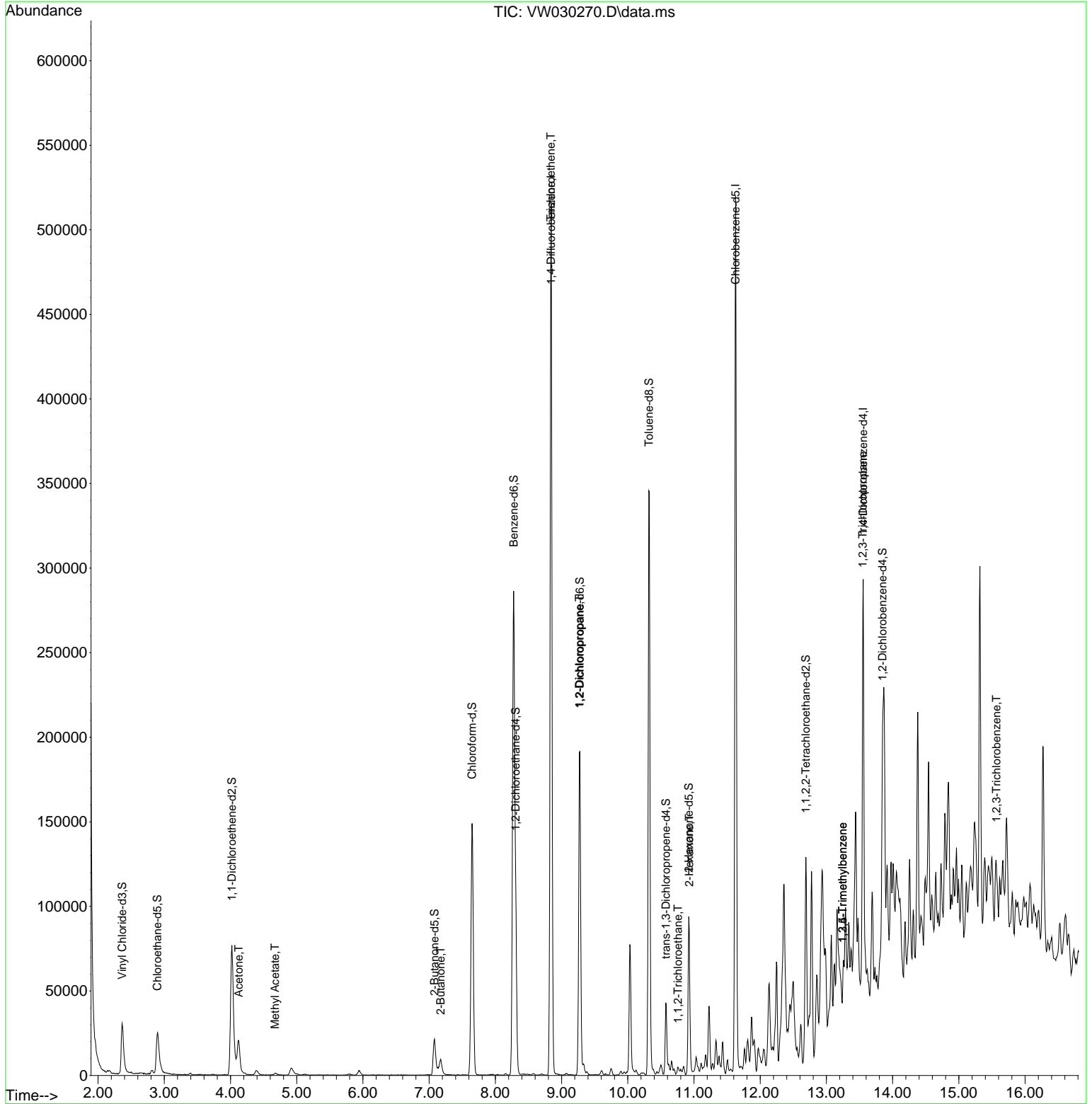
Compound	R.T.	QI on	Response	Conc	Units	Dev(Min)
Internal Standards						
1) 1,4-Difluorobenzene	8.843	114	408174	25.000	ug/L	0.00
28) Chlorobenzene-d5	11.629	117	269021	25.000	ug/L	0.00
58) 1,4-Dichlorobenzene-d4	13.556	152	64241	25.000	ug/L	0.00
System Monitoring Compounds						
4) Vinyl Chloride-d3	2.363	65	47495	8.624	ug/L	0.00
Spike Amount	25.000	Range	30 - 150	Recovery	=	34.480%
7) Chloroethane-d5	2.893	69	41352	10.187	ug/L	0.00
Spike Amount	25.000	Range	30 - 150	Recovery	=	40.760%
11) 1,1-Dichloroethene-d2	4.021	65	29854	10.943	ug/L	0.00
Spike Amount	25.000	Range	45 - 110	Recovery	=	43.760%#
21) 2-Butanone-d5	7.081	46	36237	27.478	ug/L	0.00
Spike Amount	50.000	Range	20 - 135	Recovery	=	54.960%
24) Chloroform-d	7.648	84	152934	12.654	ug/L	0.00
Spike Amount	25.000	Range	40 - 150	Recovery	=	50.600%
26) 1,2-Dichloroethane-d4	8.307	65	75492	12.246	ug/L	0.00
Spike Amount	25.000	Range	70 - 130	Recovery	=	49.000%#
32) Benzene-d6	8.276	84	287758	16.933	ug/L	0.00
Spike Amount	25.000	Range	20 - 135	Recovery	=	67.720%
36) 1,2-Dichloropropane-d6	9.276	67	91322	17.357	ug/L	0.00
Spike Amount	25.000	Range	70 - 120	Recovery	=	69.440%#
41) Toluene-d8	10.319	98	221146	14.643	ug/L	0.00
Spike Amount	25.000	Range	30 - 130	Recovery	=	58.560%
43) trans-1,3-Dichloropropene	10.575	79	23931	12.000	ug/L	0.00
Spike Amount	25.000	Range	30 - 135	Recovery	=	48.000%
47) 2-Hexanone-d5	10.922	63	28027	38.056	ug/L	0.00
Spike Amount	50.000	Range	20 - 135	Recovery	=	76.120%
56) 1,1,2,2-Tetrachloroethene	12.690	84	47323	13.168	ug/L	0.00
Spike Amount	25.000	Range	45 - 120	Recovery	=	52.680%
66) 1,2-Dichlorobenzene-d4	13.848	152	30851	13.800	ug/L	0.00
Spike Amount	25.000	Range	75 - 120	Recovery	=	55.200%#
Target Compounds						
13) Acetone	4.125	43	31508	16.760	ug/L	98
15) Methyl Acetate	4.673	43	2238	0.864	ug/L #	91
22) 2-Butanone	7.173	43	14084	6.586	ug/L	97
34) Trichloroethene	8.837	95	12916	2.701	ug/L #	7
37) 1,2-Dichloropropane	9.270	63	10370	2.122	ug/L #	88
45) 1,1,2-Trichloroethane	10.757	97	1208	0.388	ug/L #	25
48) 2-Hexanone	10.928	43	9637	4.754	ug/L #	44
61) 1,2,3-Trichloropropane	13.550	75	8341	6.606	ug/L #	80
62) 1,3,5-Trimethyl benzene	13.245	105	3076	0.403	ug/L	93
63) 1,2,4-Trimethyl benzene	13.245	105	3076	0.411	ug/L	98
72) 1,2,3-Trichlorobenzene	15.568	180	884	0.459	ug/L #	56

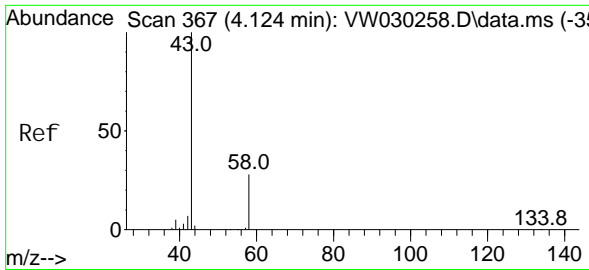
(#) = qualifier out of range (m) = manual integration (+) = signals summed

Data Path : Z:\voasrv\HPCHEM1\MSVOA_W\Data\VW092624\
 Data File : VW030270.D
 Acq On : 26 Sep 2024 19:44
 Operator : SY/MD
 Sample : P4183-15
 Misc : 5.14g/10mL/MSVOA_W/SOIL/A
 ALS Vial : 24 Sample Multiplier: 1

Instrument :
 MSVOA_W
 ClientSampleId :

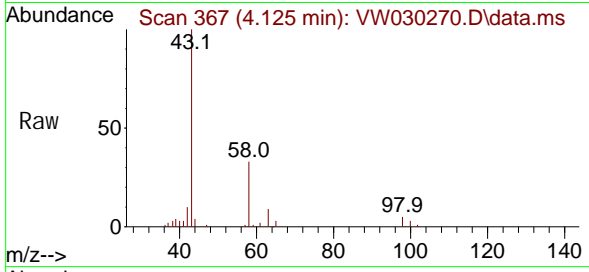
Quant Time: Sep 27 04:42:24 2024
 Quant Method : Z:\voasrv\HPCHEM1\MSVOA_W\Method\SFAMWLM092624SMA.M
 Quant Title : SFAM01.0
 QLast Update : Fri Sep 27 04:39:02 2024
 Response via : Initial Calibration



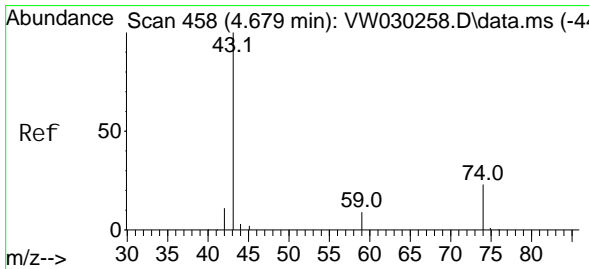
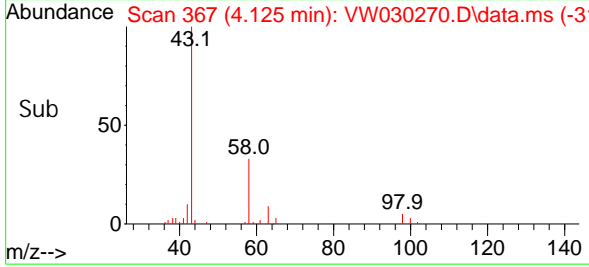
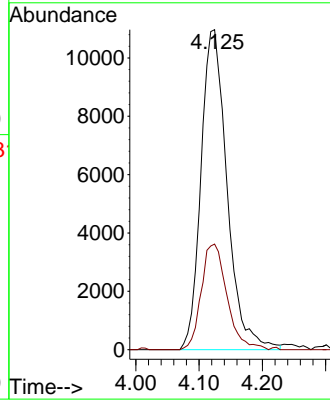


#13
 Acetone
 Concen: 16.760 ug/L
 RT: 4.125 min Scan# 30
 Delta R.T. 0.000 min
 Lab File: VW030270.D
 Acq: 26 Sep 2024 19:44

Instrument : MSVOA_W
 ClientSampleId :

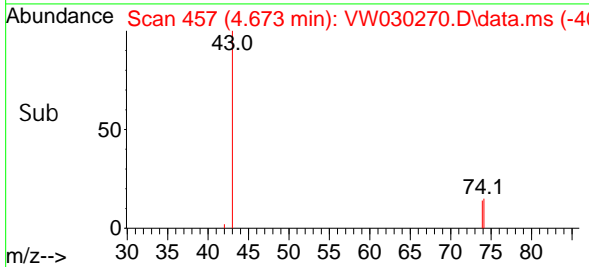
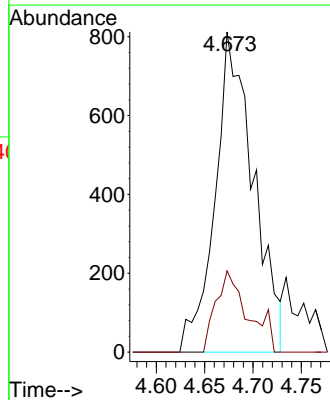
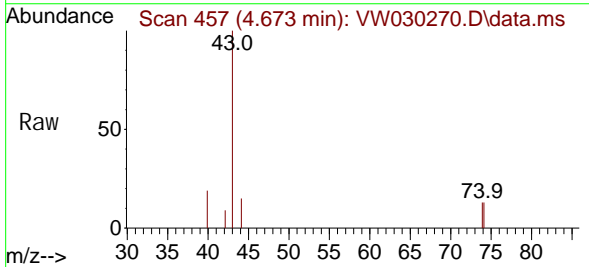


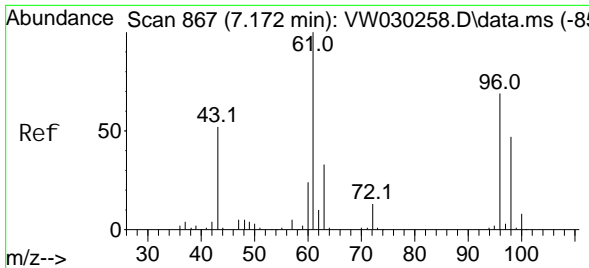
Tgt Ion: 43 Resp: 31508
 Ion Ratio Lower Upper
 43 100
 58 31.8 0.0 62.0



#15
 Methyl Acetate
 Concen: 0.864 ug/L
 RT: 4.673 min Scan# 457
 Delta R.T. -0.006 min
 Lab File: VW030270.D
 Acq: 26 Sep 2024 19:44

Tgt Ion: 43 Resp: 2238
 Ion Ratio Lower Upper
 43 100
 74 17.1 17.3 25.9#

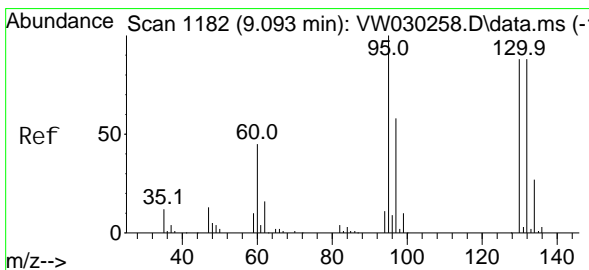
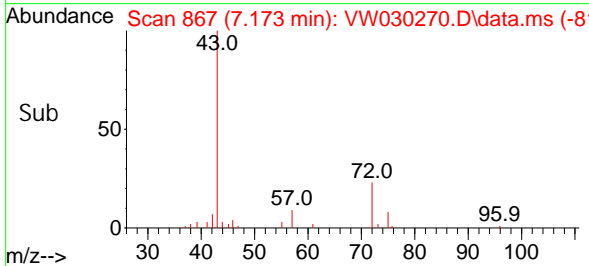
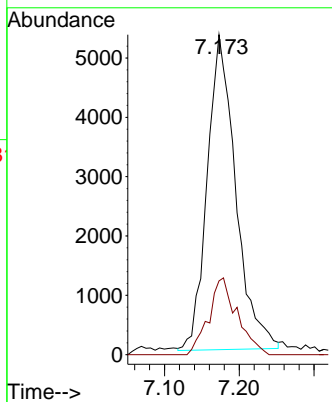
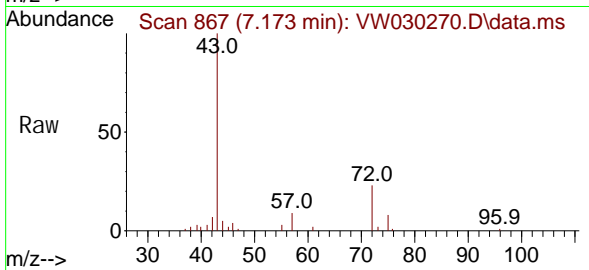




#22
 2-Butanone
 Concen: 6.586 ug/L
 RT: 7.173 min Scan# 80
 Delta R.T. 0.000 min
 Lab File: VW030270.D
 Acq: 26 Sep 2024 19:44

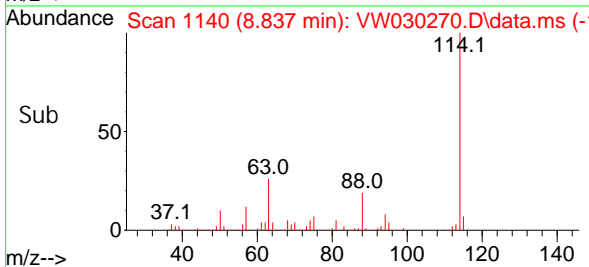
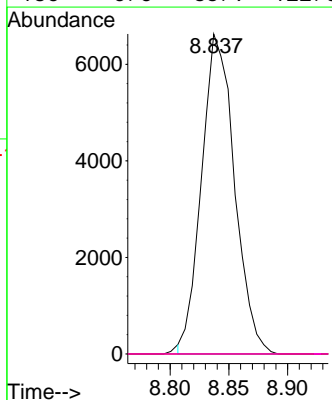
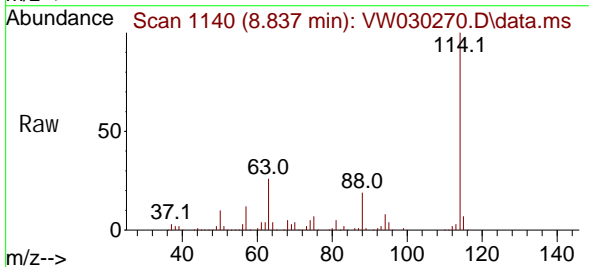
Instrument :
 MSVOA_W
 ClientSampleId :

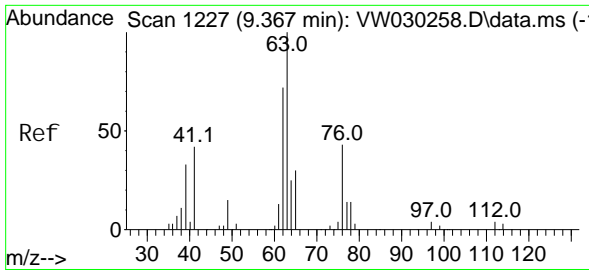
Tgt Ion: 43 Resp: 14084
 Ion Ratio Lower Upper
 43 100
 72 24.4 13.0 39.0



#34
 Tri chloroethene
 Concen: 2.701 ug/L
 RT: 8.837 min Scan# 1140
 Delta R.T. -0.256 min
 Lab File: VW030270.D
 Acq: 26 Sep 2024 19:44

Tgt Ion: 95 Resp: 12916
 Ion Ratio Lower Upper
 95 100
 97 0.0 45.6 84.8#
 132 0.0 63.0 117.0#
 130 0.0 65.9 122.5#

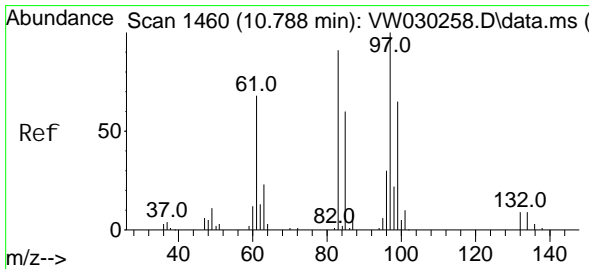
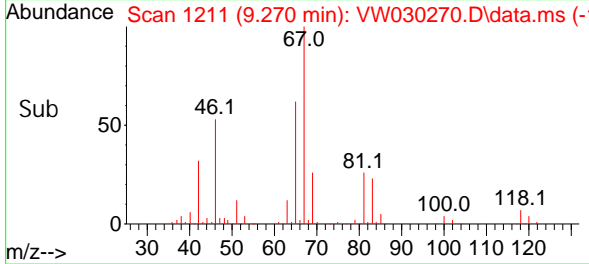
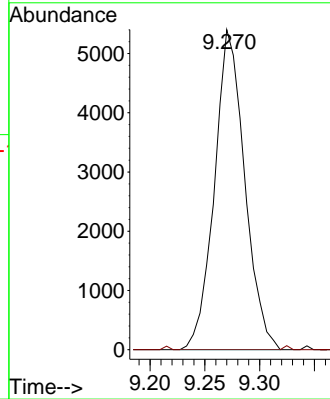
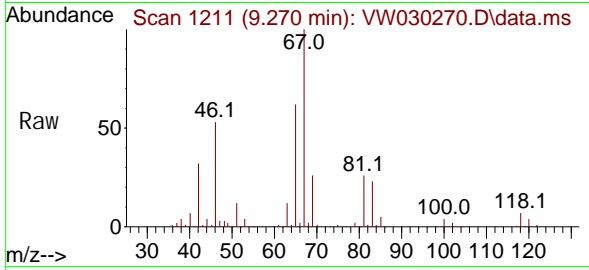




#37
 1, 2-Di chl oropropane
 Concen: 2.122 ug/L
 RT: 9.270 min Scan# 11
 Delta R.T. -0.097 min
 Lab File: VW030270.D
 Acq: 26 Sep 2024 19:44

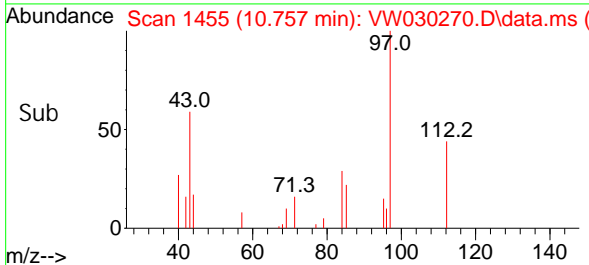
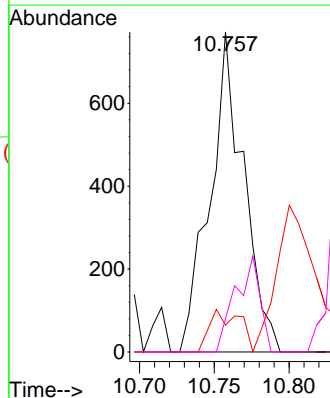
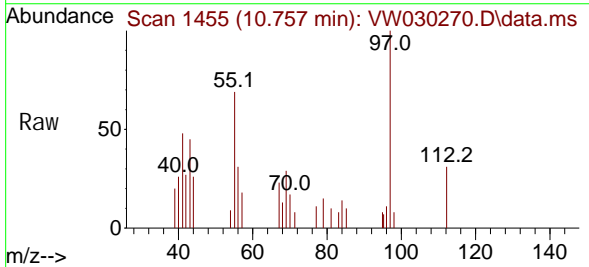
Instrument :
 MSVOA_W
 ClientSampleId :

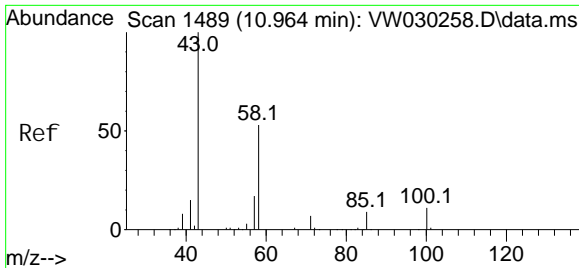
Tgt Ion: 63 Resp: 10370
 Ion Ratio Lower Upper
 63 100
 112 0.0 3.2 4.8#



#45
 1, 1, 2-Tri chl oroethane
 Concen: 0.388 ug/L
 RT: 10.757 min Scan# 1455
 Delta R.T. -0.030 min
 Lab File: VW030270.D
 Acq: 26 Sep 2024 19:44

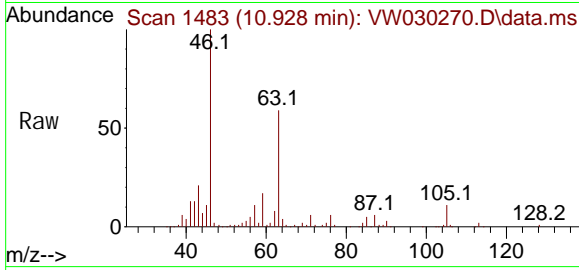
Tgt Ion: 97 Resp: 1208
 Ion Ratio Lower Upper
 97 100
 99 0.0 40.4 75.0#
 83 8.4 56.7 105.3#
 85 10.4 37.2 69.2#





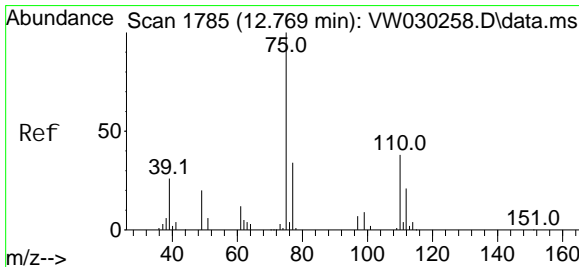
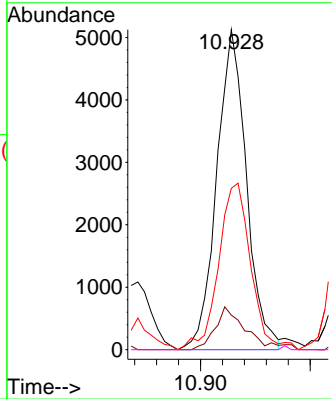
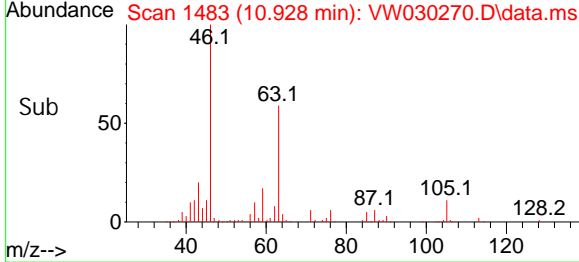
#48
 2-Hexanone
 Concen: 4.754 ug/L
 RT: 10.928 min Scan# 1483
 Delta R.T. -0.036 min
 Lab File: VW030270.D
 Acq: 26 Sep 2024 19:44

Instrument : MSVOA_W
 ClientSampleId :

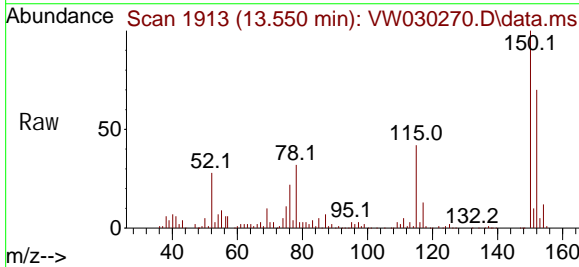


Tgt Ion: 43 Resp: 9637

Ion	Ratio	Lower	Upper
43	100		
58	12.7	43.3	64.9#
57	49.5	15.4	23.0#
100	0.0	9.0	13.4#

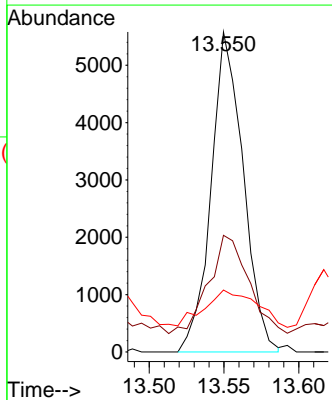
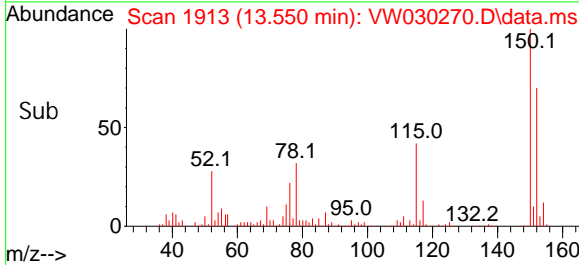


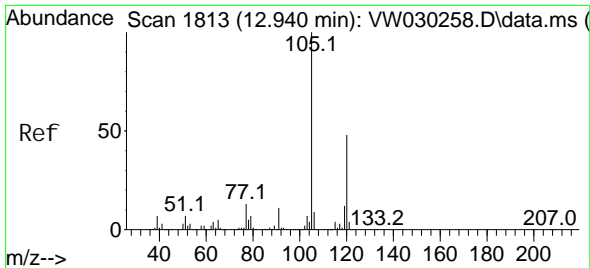
#61
 1,2,3-Trichloropropane
 Concen: 6.606 ug/L
 RT: 13.550 min Scan# 1913
 Delta R.T. 0.781 min
 Lab File: VW030270.D
 Acq: 26 Sep 2024 19:44



Tgt Ion: 75 Resp: 8341

Ion	Ratio	Lower	Upper
75	100		
77	36.6	26.6	39.8
110	18.7	30.3	45.5#

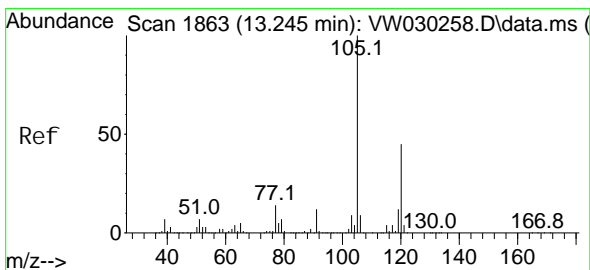
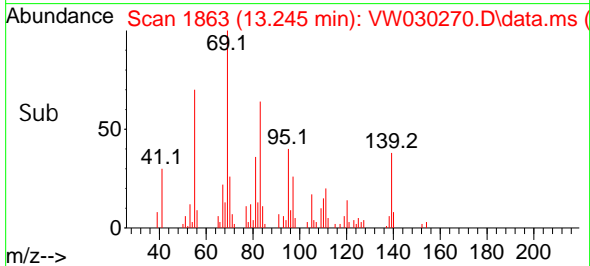
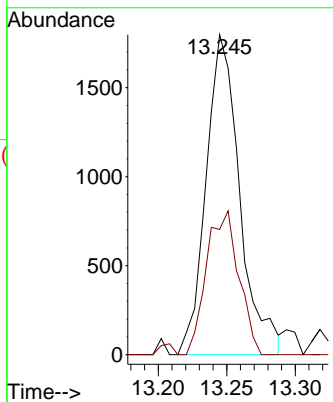
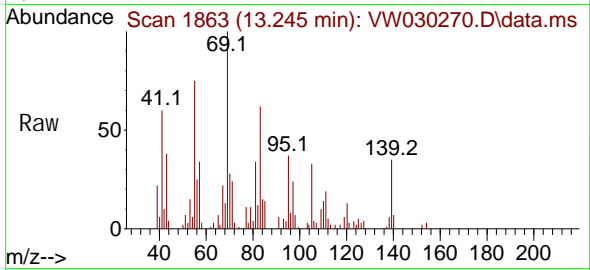




#62
 1, 3, 5-Tri methyl benzene
 Concen: 0.403 ug/L
 RT: 13.245 min Scan# 1863
 Delta R.T. 0.305 min
 Lab File: VW030270.D
 Acq: 26 Sep 2024 19:44

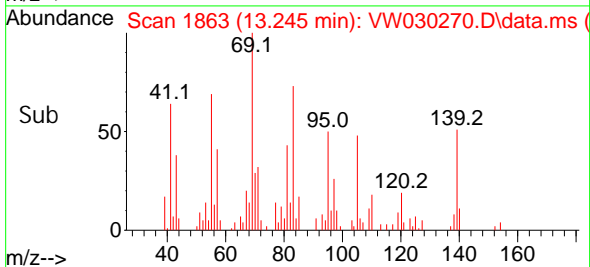
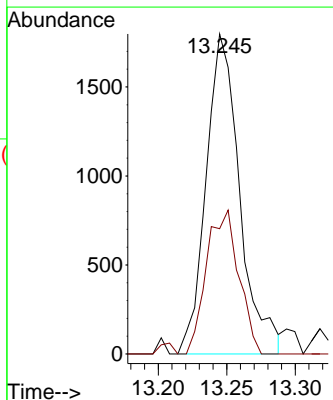
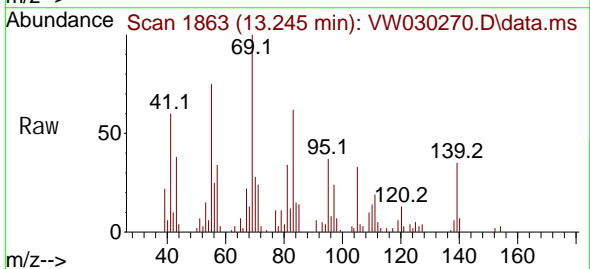
Instrument : MSVOA_W
 ClientSampleId :

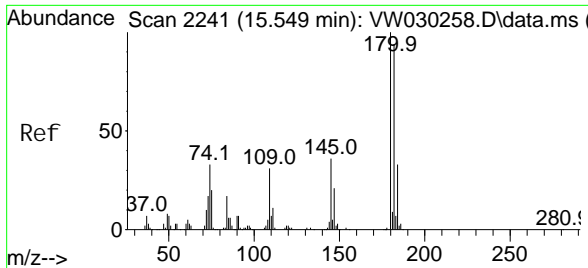
Tgt Ion: 105 Resp: 3076
 Ion Ratio Lower Upper
 105 100
 120 43.1 38.3 57.5



#63
 1, 2, 4-Tri methyl benzene
 Concen: 0.411 ug/L
 RT: 13.245 min Scan# 1863
 Delta R.T. 0.000 min
 Lab File: VW030270.D
 Acq: 26 Sep 2024 19:44

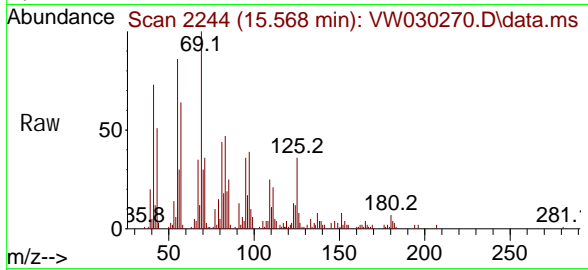
Tgt Ion: 105 Resp: 3076
 Ion Ratio Lower Upper
 105 100
 120 43.1 35.5 53.3





#72
 1, 2, 3-Tri chlorobenzene
 Concen: 0.459 ug/L
 RT: 15.568 min Scan# 21
 Delta R.T. 0.019 min
 Lab File: VW030270.D
 Acq: 26 Sep 2024 19:44

Instrument :
 MSVOA_W
 ClientSampleId :



Tgt Ion: 180 Resp: 884

Ion	Ratio	Lower	Upper
180	100		
182	55.3	73.4	110.2#
145	0.0	27.5	41.3#

