

Data Path : Z:\voasrv\HPCHEM1\MSVOA_W\Data\VW092624\
 Data File : VW030263.D
 Acq On : 26 Sep 2024 16:55
 Operator : SY/MD
 Sample : P4183-05
 Misc : 4.80g/10mL/MSVOA_W/SOIL/A
 ALS Vial : 17 Sample Multiplier: 1

Instrument :
 MSVOA_W
 ClientSampleId :
 A4EM1

Integration Parameters: LSCINT.P

Integrator: RTE
 Smoothing : OFF
 Sampling : 1
 Start Thrs: 0.2
 Stop Thrs : 0

Filtering: 5
 Min Area: 0 % of largest Peak
 Max Peaks: 100
 Peak Location: TOP

If leading or trailing edge < 100 prefer < Baseline drop else tangent >
 Peak separation: 5

Method : Z:\voasrv\HPCHEM1\MSVOA_W\Method\SFAMWLM092624SMA.M
 Title : SFAM01.0

Signal : TIC: VW030263.D\data.ms

peak #	R.T. min	first scan	max scan	last scan	PK TY	peak height	corr. area	corr. % max.	% of total
1	2.149	38	43	47	rBV4	1570	3253	0.47%	0.078%
2	2.363	71	78	92	rBV	23935	64966	9.34%	1.549%
3	2.680	129	130	132	rVB	559	313	0.04%	0.007%
4	2.747	139	141	144	rVB2	440	518	0.07%	0.012%
5	2.796	147	149	150	rVB	264	163	0.02%	0.004%
6	2.826	153	154	156	rVB	336	241	0.03%	0.006%
7	2.899	156	166	182	rBV	21841	69168	9.94%	1.649%
8	3.149	205	207	208	rVB	377	191	0.03%	0.005%
9	3.192	213	214	218	rVB	297	373	0.05%	0.009%
10	3.228	218	220	223	rBV2	235	239	0.03%	0.006%
11	3.356	239	241	242	rBV2	178	163	0.02%	0.004%
12	3.442	253	255	258	rVB	239	213	0.03%	0.005%
13	3.484	258	262	265	rVB2	260	374	0.05%	0.009%
14	3.527	267	269	271	rVV	195	198	0.03%	0.005%
15	3.551	271	273	274	rVV2	265	210	0.03%	0.005%
16	3.704	296	298	299	rBV	267	173	0.02%	0.004%
17	3.765	306	308	311	rBV2	123	154	0.02%	0.004%
18	3.820	315	317	318	rBV2	265	199	0.03%	0.005%
19	4.021	339	350	375	rBV2	56410	195413	28.08%	4.659%
20	4.210	379	381	383	rVB2	615	489	0.07%	0.012%
21	4.375	403	408	410	rBV2	444	659	0.09%	0.016%
22	4.399	410	412	414	rVV3	669	717	0.10%	0.017%
23	4.417	414	415	419	rVV2	504	535	0.08%	0.013%
24	4.448	419	420	422	rVB2	362	173	0.02%	0.004%
25	4.606	442	446	447	rVV	497	595	0.09%	0.014%
26	4.624	447	449	453	rVB	718	687	0.10%	0.016%
27	4.917	488	497	499	rBV4	3051	7238	1.04%	0.173%
28	5.069	519	522	524	rBV2	139	171	0.02%	0.004%
29	5.204	539	544	545	rBV2	227	211	0.03%	0.005%
30	5.460	582	586	589	rBV	260	273	0.04%	0.007%
31	5.728	629	630	633	rVB2	231	162	0.02%	0.004%
32	5.947	658	666	673	rBV4	2296	6163	0.89%	0.147%
33	6.130	693	696	697	rBV2	166	159	0.02%	0.004%
34	6.283	720	721	725	rVB2	145	155	0.02%	0.004%
35	6.325	725	728	731	rBV2	125	155	0.02%	0.004%
36	6.356	731	733	735	rBV2	204	166	0.02%	0.004%

Data Path : Z:\voasrv\HPCHEM1\MSVOA_W\Data\VW092624\
 Data File : VW030263.D
 Acq On : 26 Sep 2024 16:55
 Operator : SY/MD
 Sample : P4183-05
 Misc : 4.80g/10mL/MSVOA_W/SOIL/A
 ALS Vial : 17 Sample Multiplier: 1

Instrument :
 MSVOA_W
 ClientSampleId :
 A4EM1

Integration Parameters: LSCINT.P

Integrator: RTE
 Smoothing : OFF
 Sampling : 1
 Start Thrs : 0.2
 Stop Thrs : 0

Filtering: 5
 Min Area: 0 % of largest Peak
 Max Peaks: 100
 Peak Location: TOP

If leading or trailing edge < 100 prefer < Baseline drop else tangent >
 Peak separation: 5

Method : Z:\voasrv\HPCHEM1\MSVOA_W\Method\SFAMWLM092624SMA.M
 Title : SFAM01.0

37	6.557	764	766	770	rBV2	143	190	0.03%	0.005%
38	6.740	794	796	798	rBV2	125	154	0.02%	0.004%
39	6.978	834	835	838	rBV2	263	187	0.03%	0.004%
40	7.081	843	852	857	rBV	11272	31875	4.58%	0.760%
41	7.319	888	891	894	rVB3	252	252	0.04%	0.006%
42	7.472	915	916	918	rVV	220	156	0.02%	0.004%
43	7.545	925	928	930	rBV2	187	165	0.02%	0.004%
44	7.569	930	932	935	rVB2	208	206	0.03%	0.005%
45	7.648	935	945	957	rBV	112729	278489	40.02%	6.640%
46	7.728	957	958	963	rVB2	354	386	0.06%	0.009%
47	7.880	981	983	985	rBV2	183	188	0.03%	0.004%
48	7.953	993	995	1000	rVB2	214	315	0.05%	0.008%
49	8.136	1024	1025	1027	rBV	225	198	0.03%	0.005%
50	8.276	1036	1048	1066	rBV2	209499	626617	90.05%	14.940%
51	8.398	1066	1068	1071	rVB3	578	495	0.07%	0.012%
52	8.618	1101	1104	1108	rBV2	241	355	0.05%	0.008%
53	8.666	1110	1112	1114	rVV2	154	159	0.02%	0.004%
54	8.691	1114	1116	1119	rVB2	171	188	0.03%	0.004%
55	8.843	1132	1141	1155	rBV	345242	695856	100.00%	16.591%
56	9.020	1167	1170	1172	rVB2	314	283	0.04%	0.007%
57	9.087	1176	1181	1184	rBV5	807	999	0.14%	0.024%
58	9.276	1203	1212	1222	rBV	149319	304005	43.69%	7.248%
59	9.416	1233	1235	1239	rVB3	198	225	0.03%	0.005%
60	9.502	1247	1249	1250	rBV2	210	178	0.03%	0.004%
61	9.575	1259	1261	1264	rVB2	245	207	0.03%	0.005%
62	9.605	1264	1266	1268	rBV	251	176	0.03%	0.004%
63	9.672	1271	1277	1279	rBV3	782	1154	0.17%	0.028%
64	9.776	1292	1294	1299	rVB2	224	295	0.04%	0.007%
65	9.813	1299	1300	1302	rBV2	341	207	0.03%	0.005%
66	9.861	1306	1308	1310	rVV	186	161	0.02%	0.004%
67	10.032	1329	1336	1349	rVV	53580	100567	14.45%	2.398%
68	10.136	1349	1353	1356	rVV3	596	872	0.13%	0.021%
69	10.166	1356	1358	1360	rVB2	257	195	0.03%	0.005%
70	10.191	1360	1362	1363	rBV	342	178	0.03%	0.004%
71	10.209	1363	1365	1368	rVB4	257	222	0.03%	0.005%
72	10.319	1375	1383	1394	rBV	226930	411599	59.15%	9.814%
73	10.392	1394	1395	1397	rVV2	997	649	0.09%	0.015%
74	10.410	1397	1398	1401	rVB3	568	360	0.05%	0.009%
75	10.501	1412	1413	1415	rBV2	456	388	0.06%	0.009%
76	10.526	1415	1417	1418	rVV2	341	320	0.05%	0.008%

Data Path : Z:\voasrv\HPCHEM1\MSVOA_W\Data\VW092624\
 Data File : VW030263.D
 Acq On : 26 Sep 2024 16:55
 Operator : SY/MD
 Sample : P4183-05
 Misc : 4.80g/10mL/MSVOA_W/SOIL/A
 ALS Vial : 17 Sample Multiplier: 1

Instrument :
 MSVOA_W
 ClientSampleId :
 A4EM1

Integration Parameters: LSCINT.P

Integrator: RTE
 Smoothing : OFF
 Sampling : 1
 Start Thrs : 0.2
 Stop Thrs : 0

Filtering: 5
 Min Area: 0 % of largest Peak
 Max Peaks: 100
 Peak Location: TOP

If leading or trailing edge < 100 prefer < Baseline drop else tangent >
 Peak separation: 5

Method : Z:\voasrv\HPCHEM1\MSVOA_W\Method\SFAMWLM092624SMA.M
 Title : SFAM01.0

77	10.575	1418	1425	1436	rVV	34774	63127	9.07%	1.505%
78	10.703	1440	1446	1454	rVB3	2671	5680	0.82%	0.135%
79	10.776	1454	1458	1459	rBV2	286	398	0.06%	0.009%
80	10.800	1460	1462	1465	rBV3	195	209	0.03%	0.005%
81	10.843	1467	1469	1470	rVB2	356	226	0.03%	0.005%
82	10.861	1470	1472	1475	rVB2	338	276	0.04%	0.007%
83	10.922	1475	1482	1499	rBV3	50059	113730	16.34%	2.712%
84	11.105	1510	1512	1514	rVB3	616	581	0.08%	0.014%
85	11.123	1514	1515	1518	rBV2	424	446	0.06%	0.011%
86	11.203	1527	1528	1530	rBV2	572	461	0.07%	0.011%
87	11.257	1534	1537	1538	rBV2	915	1123	0.16%	0.027%
88	11.629	1591	1598	1607	rBV	344660	578648	83.16%	13.797%
89	11.910	1641	1644	1647	rBV4	654	928	0.13%	0.022%
90	12.056	1666	1668	1669	rVB2	388	159	0.02%	0.004%
91	12.178	1686	1688	1690	rVB3	1022	606	0.09%	0.014%
92	12.373	1719	1720	1725	rBV4	718	980	0.14%	0.023%
93	12.690	1765	1772	1779	rVB	83942	137542	19.77%	3.279%
94	12.928	1809	1811	1813	rBV3	1076	1100	0.16%	0.026%
95	13.403	1885	1889	1893	rBV6	1648	2715	0.39%	0.065%
96	13.556	1907	1914	1925	rVB	186177	307439	44.18%	7.330%
97	13.848	1956	1962	1968	rBV	97076	159782	22.96%	3.810%
98	14.415	2053	2055	2057	rBV3	1009	1016	0.15%	0.024%
99	15.458	2224	2226	2227	rBV2	811	452	0.06%	0.011%
100	15.866	2290	2293	2295	rBV4	1411	1638	0.24%	0.039%

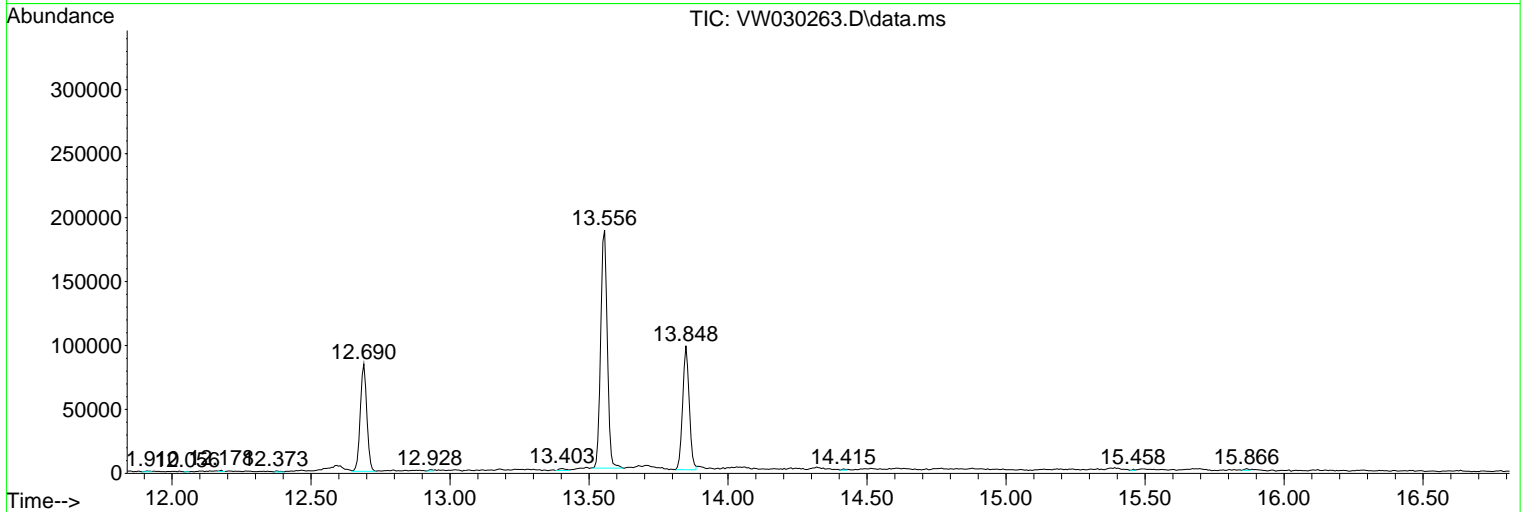
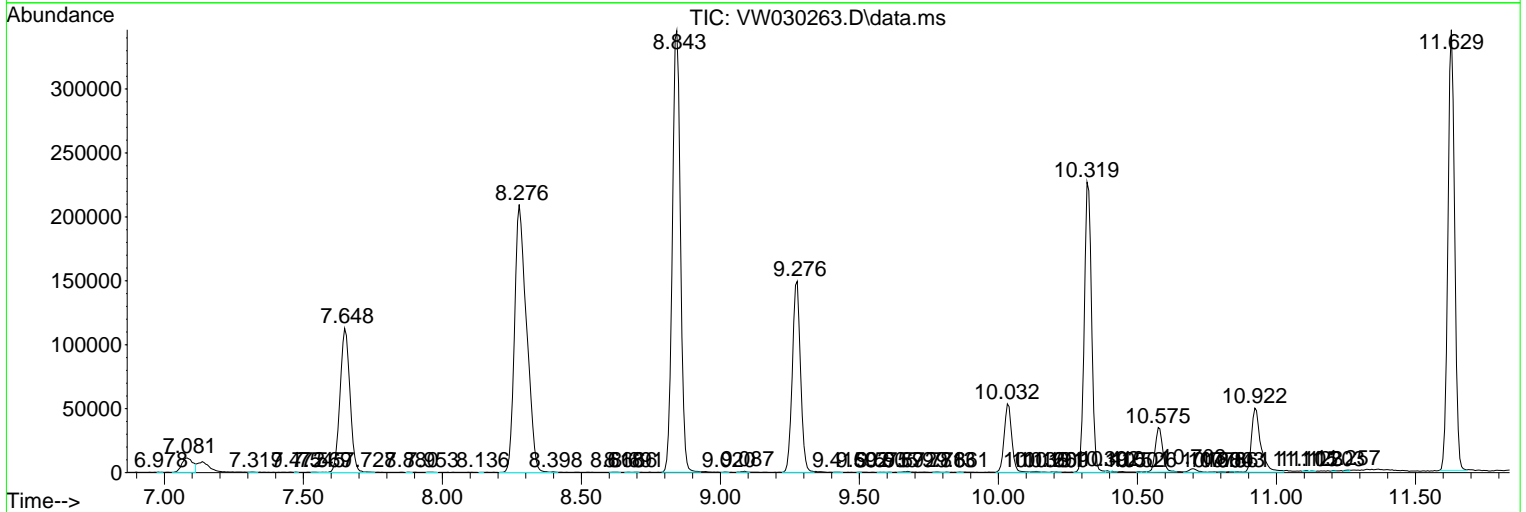
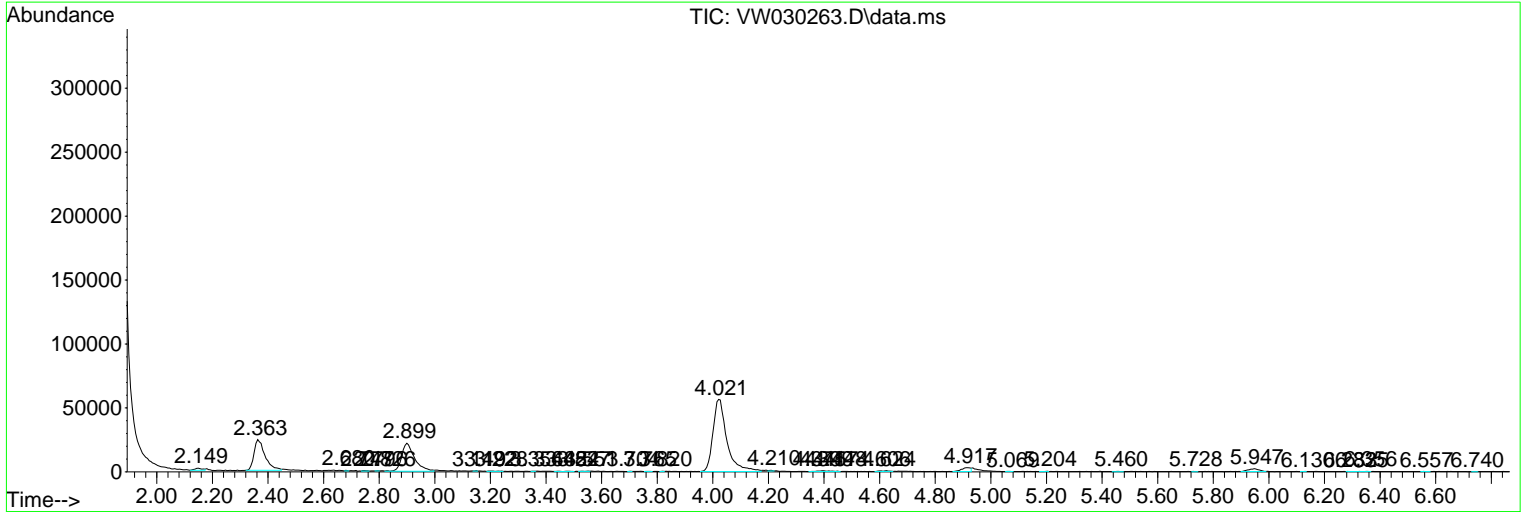
Sum of corrected areas: 4194163

Data Path : Z:\voasrv\HPCHEM1\MSVOA_W\Data\VW092624\
 Data File : VW030263.D
 Acq On : 26 Sep 2024 16:55
 Operator : SY/MD
 Sample : P4183-05
 Misc : 4.80g/10mL/MSVOA_W/SOIL/A
 ALS Vial : 17 Sample Multiplier: 1

Instrument :
 MSVOA_W
 ClientSampleId :
 A4EM1

Quant Method : Z:\voasrv\HPCHEM1\MSVOA_W\Method\SFAMWLM092624SMA.M
 Quant Title : SFAM01.0

TIC Library : C:\Database\NIST20.L
 TIC Integration Parameters: LSCINT.P



Library Search Compound Report

Data Path : Z:\voasrv\HPCHEM1\MSVOA_W\Data\VW092624\
Data File : VW030263.D
Acq On : 26 Sep 2024 16:55
Operator : SY/MD
Sample : P4183-05
Misc : 4.80g/10mL/MSVOA_W/SOIL/A
ALS Vial : 17 Sample Multiplier: 1

Instrument :
MSVOA_W
ClientSampleId :
A4EM1

Quant Method : Z:\voasrv\HPCHEM1\MSVOA_W\Method\SFAMWLM092624SMA.M
Quant Title : SFAM01.0

TIC Library : C:\Database\NIST20.L
TIC Integration Parameters: LSCINT.P

No Library Search Compounds Detected

Data Path : Z:\voasrv\HPCHEM1\MSVOA_W\Data\VW092624\
Data File : VW030263.D
Acq On : 26 Sep 2024 16:55
Operator : SY/MD
Sample : P4183-05
Misc : 4.80g/10mL/MSVOA_W/SOIL/A
ALS Vial : 17 Sample Multiplier: 1

Instrument :
MSVOA_W
ClientSampleId :
A4EM1

Quant Method : Z:\voasrv\HPCHEM1\MSVOA_W\Method\SFAMWLM092624SMA.M
Quant Title : SFAM01.0

TIC Library : C:\Database\NIST20.L
TIC Integration Parameters: LSCINT.P

TIC Top Hit name	RT	EstConc	Units	Response	--Internal Standard--		
					#	RT	Resp Conc
