

Data Path : Z:\voasrv\HPCHEM1\MSVOA_W\Data\VW092821\
 Data File : VW020211.D
 Acq On : 28 Sep 2021 10:49
 Operator : SY/VA
 Sample : M3874-23
 Misc : 5.01g/10mL/MSVOA_W/SOIL
 ALS Vial : 1 Sample Multiplier: 1

Instrument :
 MSVOA_W
 ClientSampleId :
 VHBLK001

Integration Parameters: LSCINT.P

Integrator: RTE
 Smoothing : OFF Filtering: 5
 Sampling : 1 Min Area: 0 % of largest Peak
 Start Thrs: 0.2 Max Peaks: 100
 Stop Thrs : 0 Peak Location: TOP

If leading or trailing edge < 100 prefer < Baseline drop else tangent >
 Peak separation: 5

Method : Z:\voasrv\HPCHEM1\MSVOA_W\Method\SFAMWLM092121SMA.M
 Title : SFAM01.0

Signal : TIC: VW020211.D\data.ms

peak #	R.T. min	first scan	max scan	last scan	PK TY	peak height	corr. area	corr. % max.	% of total
1	2.361	69	75	85	rVB	107576	200581	17.24%	2.376%
2	2.897	156	163	179	rVB	78135	187141	16.08%	2.217%
3	3.574	273	274	276	rBV	247	176	0.02%	0.002%
4	3.599	276	278	281	rVB2	273	239	0.02%	0.003%
5	3.702	292	295	297	rBV	139	215	0.02%	0.003%
6	3.910	327	329	332	rBV	308	224	0.02%	0.003%
7	4.025	337	348	364	rBV	141993	410909	35.31%	4.868%
8	4.263	385	387	391	rVB2	309	284	0.02%	0.003%
9	4.318	393	396	398	rBV	260	292	0.03%	0.003%
10	4.385	402	407	410	rBV2	471	983	0.08%	0.012%
11	4.446	415	417	420	rVB3	248	285	0.02%	0.003%
12	4.574	436	438	440	rBV2	156	174	0.01%	0.002%
13	4.647	447	450	451	rBV2	179	197	0.02%	0.002%
14	4.690	454	457	458	rVB2	247	198	0.02%	0.002%
15	4.702	458	459	462	rBV2	143	166	0.01%	0.002%
16	4.733	462	464	465	rVV	180	155	0.01%	0.002%
17	4.800	472	475	476	rBV2	229	204	0.02%	0.002%
18	4.922	484	495	510	rBV3	17749	59390	5.10%	0.704%
19	5.129	526	529	530	rBV	279	233	0.02%	0.003%
20	5.239	546	547	552	rBV2	158	205	0.02%	0.002%
21	5.415	572	576	578	rVB2	235	266	0.02%	0.003%
22	5.495	587	589	591	rBV	176	174	0.01%	0.002%
23	5.757	628	632	635	rBV	200	235	0.02%	0.003%
24	5.940	654	662	674	rBV5	4566	13140	1.13%	0.156%
25	6.098	686	688	691	rVB	267	190	0.02%	0.002%
26	6.244	710	712	716	rBV2	136	156	0.01%	0.002%
27	6.391	734	736	738	rBV2	159	159	0.01%	0.002%
28	6.470	746	749	752	rBV2	153	224	0.02%	0.003%
29	6.592	766	769	770	rBV2	157	147	0.01%	0.002%
30	6.616	770	773	777	rBV2	189	299	0.03%	0.004%
31	7.080	840	849	867	rBV	31710	95136	8.18%	1.127%
32	7.342	889	892	894	rVB2	160	177	0.02%	0.002%
33	7.415	903	904	906	rBV	198	197	0.02%	0.002%
34	7.555	924	927	928	rBV2	244	180	0.02%	0.002%
35	7.653	932	943	958	rVV	212034	520490	44.73%	6.166%
36	7.756	958	960	962	rVV	260	180	0.02%	0.002%

Data Path : Z:\voasrv\HPCHEM1\MSVOA_W\Data\VW092821\
 Data File : VW020211.D
 Acq On : 28 Sep 2021 10:49
 Operator : SY/VA
 Sample : M3874-23
 Misc : 5.01g/10mL/MSVOA_W/SOIL
 ALS Vial : 1 Sample Multiplier: 1

Instrument :
 MSVOA_W
 ClientSampleId :
 VHBLK001

Integration Parameters: LSCINT.P

Integrator: RTE
 Smoothing : OFF
 Sampling : 1
 Start Thrs: 0.2
 Stop Thrs : 0

Filtering: 5
 Min Area: 0 % of largest Peak
 Max Peaks: 100
 Peak Location: TOP

If leading or trailing edge < 100 prefer < Baseline drop else tangent >
 Peak separation: 5

Method : Z:\voasrv\HPCHEM1\MSVOA_W\Method\SFAMWLM092121SMA.M
 Title : SFAM01.0

37	7.884	978	981	985	rVB2	362	474	0.04%	0.006%
38	7.933	987	989	991	rBV	163	192	0.02%	0.002%
39	8.281	1035	1046	1063	rBV2	388230	1163644	100.00%	13.785%
40	8.433	1070	1071	1073	rVB2	226	147	0.01%	0.002%
41	8.464	1073	1076	1079	rBV2	255	274	0.02%	0.003%
42	8.628	1101	1103	1105	rVV2	361	335	0.03%	0.004%
43	8.646	1105	1106	1108	rVV2	387	226	0.02%	0.003%
44	8.683	1109	1112	1117	rVB3	317	449	0.04%	0.005%
45	8.848	1129	1139	1153	rBV	353038	704733	60.56%	8.348%
46	9.073	1173	1176	1181	rVV4	621	1028	0.09%	0.012%
47	9.274	1201	1209	1219	rBV	277050	552011	47.44%	6.539%
48	9.658	1267	1272	1274	rBV3	359	579	0.05%	0.007%
49	10.036	1326	1334	1346	rBV	140383	248063	21.32%	2.939%
50	10.323	1373	1381	1388	rBV	533772	950693	81.70%	11.262%
51	10.469	1401	1405	1406	rBV3	206	241	0.02%	0.003%
52	10.579	1416	1423	1433	rVB	95998	163331	14.04%	1.935%
53	10.707	1438	1444	1449	rBV2	2611	4701	0.40%	0.056%
54	10.841	1463	1466	1467	rBV3	329	365	0.03%	0.004%
55	10.927	1473	1480	1491	rBV	132090	220948	18.99%	2.617%
56	11.134	1511	1514	1515	rBV	227	257	0.02%	0.003%
57	11.176	1518	1521	1523	rVB2	333	394	0.03%	0.005%
58	11.402	1555	1558	1560	rBV	506	469	0.04%	0.006%
59	11.524	1576	1578	1581	rBV2	156	195	0.02%	0.002%
60	11.634	1588	1596	1607	rVV	517419	863037	74.17%	10.224%
61	12.006	1654	1657	1659	rVB2	211	198	0.02%	0.002%
62	12.030	1659	1661	1662	rBV	215	150	0.01%	0.002%
63	12.170	1679	1684	1685	rBV3	451	523	0.04%	0.006%
64	12.237	1693	1695	1699	rVV2	315	315	0.03%	0.004%
65	12.432	1725	1727	1728	rBV2	274	165	0.01%	0.002%
66	12.469	1731	1733	1739	rVV4	434	798	0.07%	0.009%
67	12.530	1741	1743	1747	rVV	198	205	0.02%	0.002%
68	12.603	1747	1755	1762	rVV5	7391	16326	1.40%	0.193%
69	12.695	1762	1770	1777	rVV	220231	369391	31.74%	4.376%
70	12.749	1777	1779	1789	rVB4	2565	4750	0.41%	0.056%
71	12.926	1805	1808	1809	rBV2	556	534	0.05%	0.006%
72	13.012	1818	1822	1828	rBV3	433	788	0.07%	0.009%
73	13.158	1843	1846	1847	rBV	532	427	0.04%	0.005%
74	13.194	1848	1852	1856	rVB3	3092	4036	0.35%	0.048%
75	13.255	1859	1862	1866	rVB3	806	1167	0.10%	0.014%
76	13.298	1866	1869	1875	rVB	900	1162	0.10%	0.014%

Data Path : Z:\voasrv\HPCHEM1\MSVOA_W\Data\VW092821\
 Data File : VW020211.D
 Acq On : 28 Sep 2021 10:49
 Operator : SY/VA
 Sample : M3874-23
 Misc : 5.01g/10mL/MSVOA_W/SOIL
 ALS Vial : 1 Sample Multiplier: 1

Instrument :
 MSVOA_W
 ClientSampleId :
 VHBLK001

Integration Parameters: LSCINT.P

Integrator: RTE
 Smoothing : OFF Filtering: 5
 Sampling : 1 Min Area: 0 % of largest Peak
 Start Thrs: 0.2 Max Peaks: 100
 Stop Thrs : 0 Peak Location: TOP

If leading or trailing edge < 100 prefer < Baseline drop else tangent >
 Peak separation: 5

Method : Z:\voasrv\HPCHEM1\MSVOA_W\Method\SFAMWLM092121SMA.M
 Title : SFAM01.0

77	13.359	1877	1879	1881	rBV2	187	212	0.02%	0.003%
78	13.402	1881	1886	1892	rVB4	2957	5413	0.47%	0.064%
79	13.475	1895	1898	1899	rBV	334	273	0.02%	0.003%
80	13.499	1899	1902	1905	rBV2	879	1438	0.12%	0.017%
81	13.560	1905	1912	1918	rBV	486965	778551	66.91%	9.223%
82	13.707	1934	1936	1939	rBV3	459	434	0.04%	0.005%
83	13.761	1941	1945	1952	rVB7	2159	4274	0.37%	0.051%
84	13.853	1952	1960	1968	rBV	494165	805134	69.19%	9.538%
85	14.066	1989	1995	2004	rVB2	18531	30448	2.62%	0.361%
86	14.273	2027	2029	2033	rBV3	253	244	0.02%	0.003%
87	14.328	2033	2038	2042	rVB2	1403	2255	0.19%	0.027%
88	14.365	2042	2044	2045	rBV2	358	216	0.02%	0.003%
89	14.627	2084	2087	2091	rBV2	921	1077	0.09%	0.013%
90	14.682	2094	2096	2097	rBV2	286	167	0.01%	0.002%
91	14.700	2097	2099	2102	rVV3	329	241	0.02%	0.003%
92	14.810	2116	2117	2120	rBV2	253	272	0.02%	0.003%
93	14.932	2136	2137	2138	rBV	350	160	0.01%	0.002%
94	14.987	2144	2146	2147	rVB	288	151	0.01%	0.002%
95	15.133	2166	2170	2173	rBV2	775	1085	0.09%	0.013%
96	15.328	2198	2202	2204	rBV3	332	415	0.04%	0.005%
97	15.487	2222	2228	2236	rVB	20604	35405	3.04%	0.419%
98	15.792	2275	2278	2283	rBV5	1053	1806	0.16%	0.021%
99	16.066	2321	2323	2324	rBV2	447	319	0.03%	0.004%
100	16.389	2374	2376	2379	rBV	328	253	0.02%	0.003%

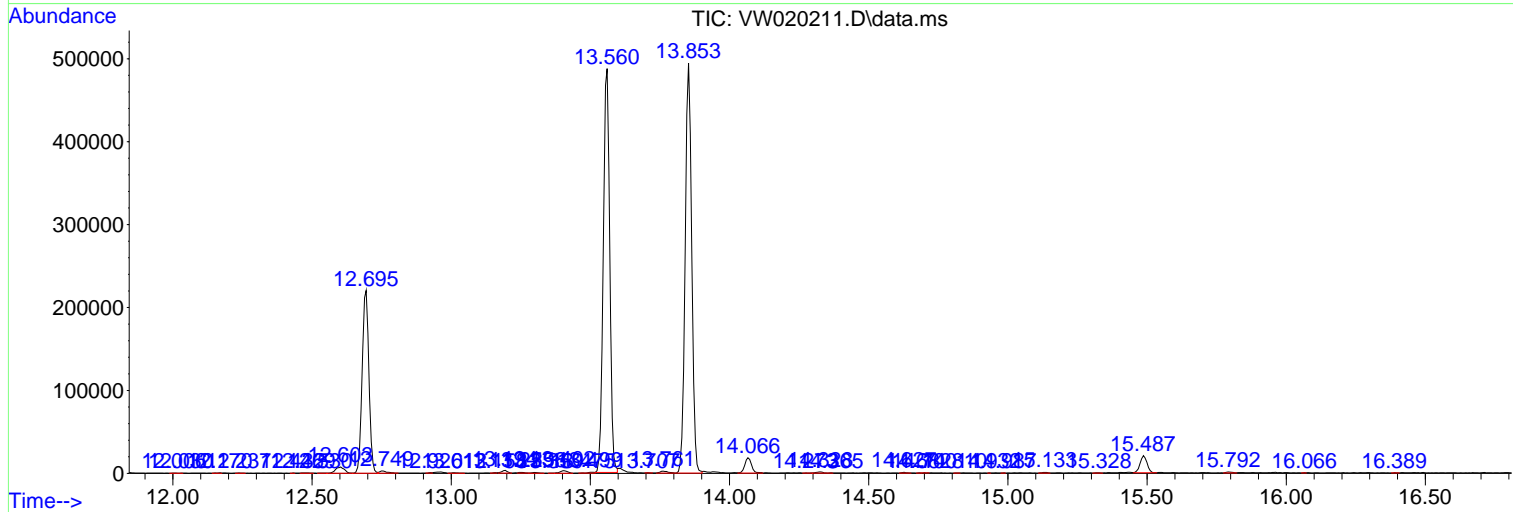
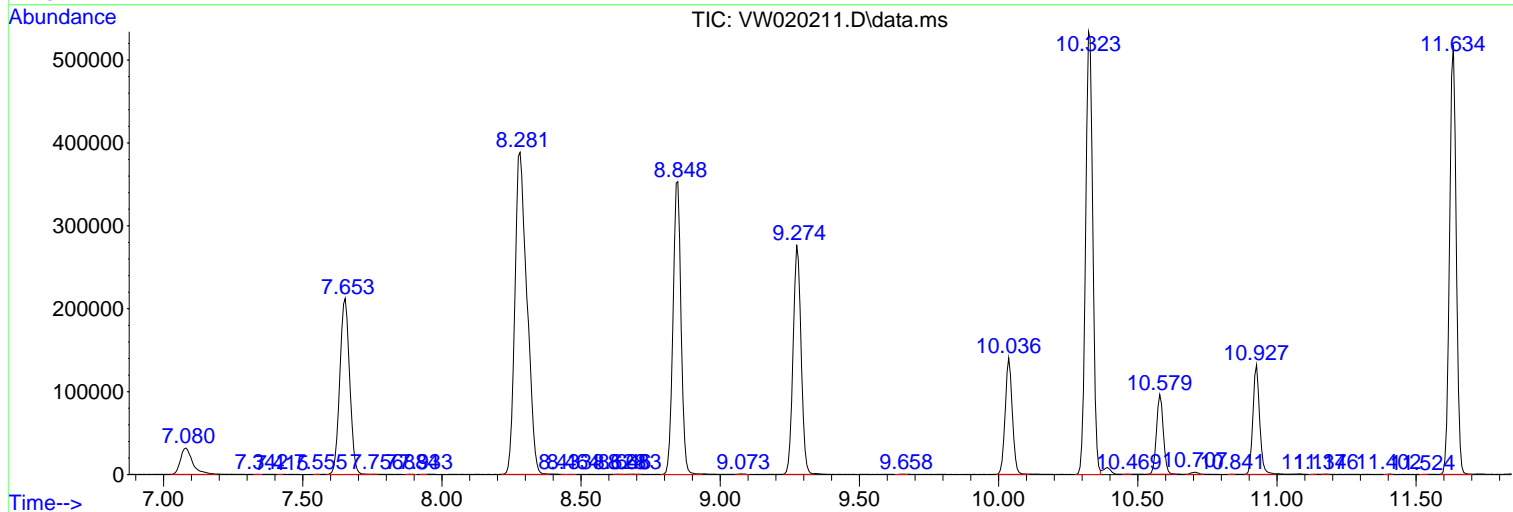
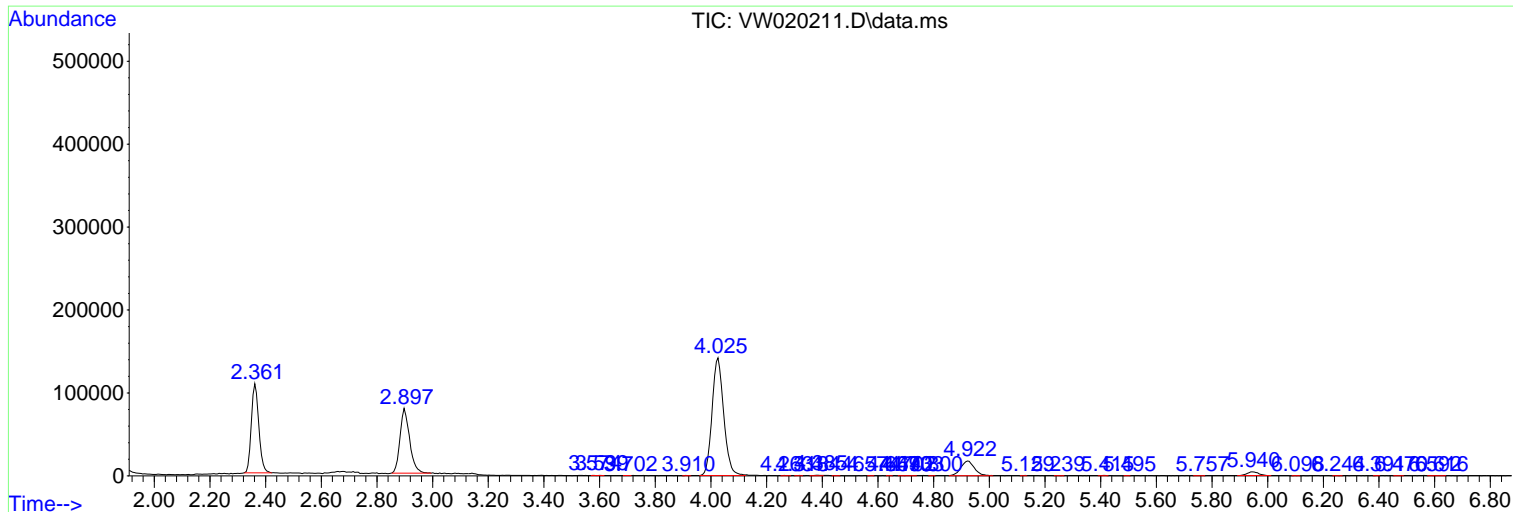
Sum of corrected areas: 8441565

Data Path : Z:\voasrv\HPCHEM1\MSVOA_W\Data\VW092821\
 Data File : VW020211.D
 Acq On : 28 Sep 2021 10:49
 Operator : SY/VA
 Sample : M3874-23
 Misc : 5.01g/10mL/MSVOA_W/SOIL
 ALS Vial : 1 Sample Multiplier: 1

Instrument :
 MSVOA_W
 ClientSampleId :
 VHBLK001

Quant Method : Z:\voasrv\HPCHEM1\MSVOA_W\Method\SFAMWLM092121SMA.M
 Quant Title : SFAM01.0

TIC Library : C:\Database\NIST20.L
 TIC Integration Parameters: LSCINT.P



Data Path : Z:\voasrv\HPCHEM1\MSVOA_W\Data\VW092821\
Data File : VW020211.D
Acq On : 28 Sep 2021 10:49
Operator : SY/VA
Sample : M3874-23
Misc : 5.01g/10mL/MSVOA_W/SOIL
ALS Vial : 1 Sample Multiplier: 1

Instrument :
MSVOA_W
ClientSampleId :
VHBLK001

Quant Method : Z:\voasrv\HPCHEM1\MSVOA_W\Method\SFAMWLM092121SMA.M
Quant Title : SFAM01.0

TIC Library : C:\Database\NIST20.L
TIC Integration Parameters: LSCINT.P

No Library Search Compounds Detected

Data Path : Z:\voasrv\HPCHEM1\MSVOA_W\Data\VW092821\
Data File : VW020211.D
Acq On : 28 Sep 2021 10:49
Operator : SY/VA
Sample : M3874-23
Misc : 5.01g/10mL/MSVOA_W/SOIL
ALS Vial : 1 Sample Multiplier: 1

Instrument :
MSVOA_W
ClientSampleId :
VHBLK001

Quant Method : Z:\voasrv\HPCHEM1\MSVOA_W\Method\SFAMWLM092121SMA.M
Quant Title : SFAM01.0

TIC Library : C:\Database\NIST0.L
TIC Integration Parameters: LSCINT.P

TIC Top Hit name	RT	EstConc	Units	Response	--Internal Standard--			
					#	RT	Resp	Conc
