

Data Path : Z:\voasrv\HPCHEM1\MSVOA_W\Data\VW092922\
 Data File : VW024676.D
 Acq On : 29 Sep 2022 14:52
 Operator : SY/VA
 Sample : N4852-13
 Misc : 4.66g/10mL/MSVOA_W/SOIL
 ALS Vial : 9 Sample Multiplier: 1

Instrument :
 MSVOA_W
 ClientSampleId :
 EW819

Quant Time: Sep 30 02:38:37 2022
 Quant Method : Z:\voasrv\HPCHEM1\MSVOA_W\Method\SFAMWLM092622SMA.M
 Quant Title : SFAM01.0
 QLast Update : Fri Sep 30 02:36:56 2022
 Response via : Initial Calibration

Compound	R.T.	QIon	Response	Conc	Units	Dev(Min)

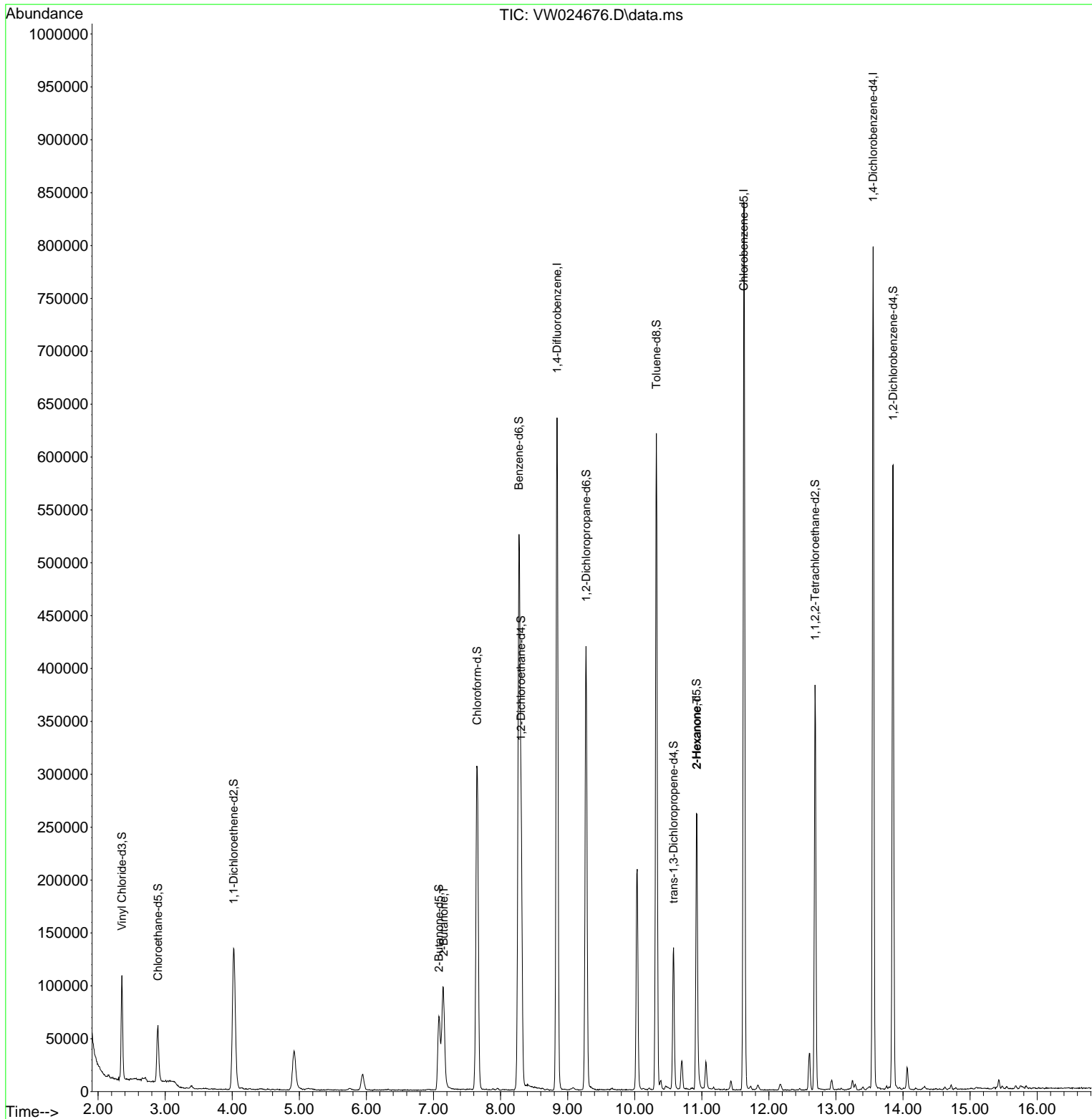
Internal Standards						
1) 1,4-Difluorobenzene	8.842	114	529405	25.000	ug/L	0.00
28) Chlorobenzene-d5	11.628	117	460410	25.000	ug/L	0.00
58) 1,4-Dichlorobenzene-d4	13.554	152	198842	25.000	ug/L	0.00
System Monitoring Compounds						
4) Vinyl Chloride-d3	2.355	65	93322	16.848	ug/L	0.00
Spiked Amount	25.000	Range 30 - 150	Recovery =	67.400%		
7) Chloroethane-d5	2.891	69	60635	18.838	ug/L	0.00
Spiked Amount	25.000	Range 30 - 150	Recovery =	75.360%		
11) 1,1-Dichloroethene-d2	4.019	63	131272	10.240	ug/L	0.00
Spiked Amount	25.000	Range 45 - 110	Recovery =	40.960%#		
21) 2-Butanone-d5	7.080	46	122877	61.704	ug/L	0.00
Spiked Amount	50.000	Range 20 - 135	Recovery =	123.400%		
24) Chloroform-d	7.653	84	325448	22.995	ug/L	0.00
Spiked Amount	25.000	Range 40 - 150	Recovery =	92.000%		
26) 1,2-Dichloroethane-d4	8.305	65	179486	24.447	ug/L	0.00
Spiked Amount	25.000	Range 70 - 130	Recovery =	97.800%		
32) Benzene-d6	8.275	84	541356	18.396	ug/L	0.00
Spiked Amount	25.000	Range 20 - 135	Recovery =	73.600%		
36) 1,2-Dichloropropane-d6	9.274	67	206563	22.974	ug/L	0.00
Spiked Amount	25.000	Range 70 - 120	Recovery =	91.880%		
41) Toluene-d8	10.323	98	412593	15.687	ug/L	0.00
Spiked Amount	25.000	Range 30 - 130	Recovery =	62.760%		
43) trans-1,3-Dichloroprop...	10.579	79	78295	19.554	ug/L	0.00
Spiked Amount	25.000	Range 30 - 135	Recovery =	78.200%		
47) 2-Hexanone-d5	10.920	63	96096	62.466	ug/L	0.00
Spiked Amount	50.000	Range 20 - 135	Recovery =	124.940%		
56) 1,1,2,2-Tetrachloroeth...	12.688	84	198293	30.952	ug/L	0.00
Spiked Amount	25.000	Range 45 - 120	Recovery =	123.800%#		
66) 1,2-Dichlorobenzene-d4	13.853	152	151216	21.611	ug/L	0.00
Spiked Amount	25.000	Range 75 - 120	Recovery =	86.440%		
Target Compounds						
					Qvalue	
22) 2-Butanone	7.153	43	8669	3.730	ug/L #	61
48) 2-Hexanone	10.927	43	14310	4.494	ug/L #	60

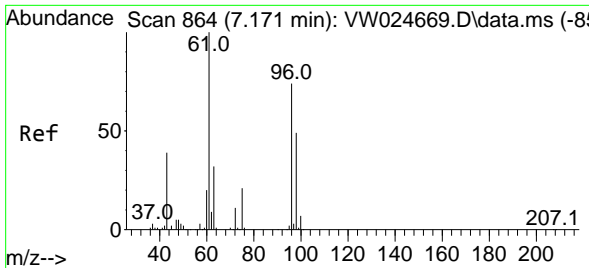
(#) = qualifier out of range (m) = manual integration (+) = signals summed

Data Path : Z:\voasrv\HPCHEM1\MSVOA_W\Data\VW092922\
 Data File : VW024676.D
 Acq On : 29 Sep 2022 14:52
 Operator : SY/VA
 Sample : N4852-13
 Misc : 4.66g/10mL/MSVOA_W/SOIL
 ALS Vial : 9 Sample Multiplier: 1

Instrument :
 MSVOA_W
 ClientSampleId :
 EW819

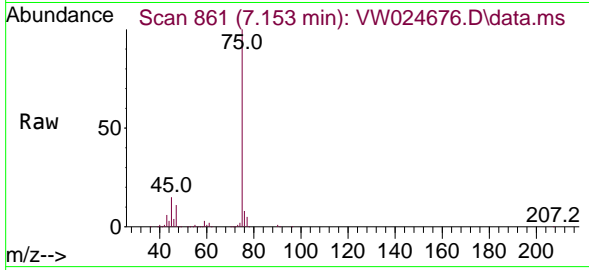
Quant Time: Sep 30 02:38:37 2022
 Quant Method : Z:\voasrv\HPCHEM1\MSVOA_W\Method\SFAMWLM092622SMA.M
 Quant Title : SFAM01.0
 QLast Update : Fri Sep 30 02:36:56 2022
 Response via : Initial Calibration



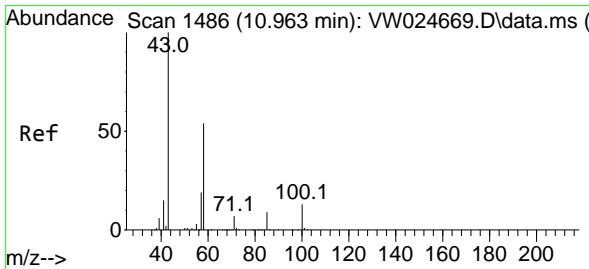
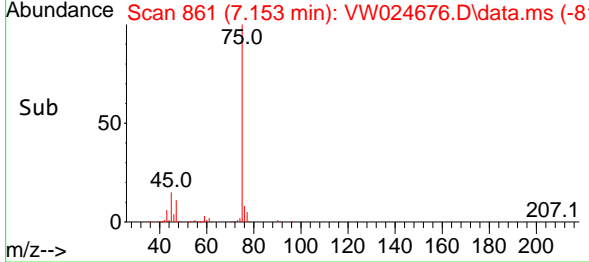
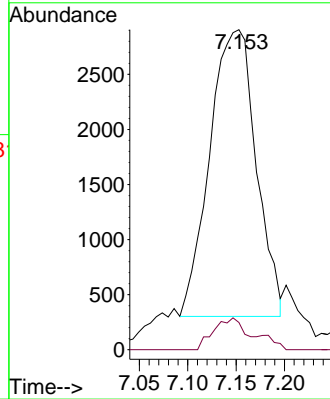


#22
 2-Butanone
 Concen: 3.730 ug/L
 RT: 7.153 min Scan# 80
 Delta R.T. -0.018 min
 Lab File: VW024676.D
 Acq: 29 Sep 2022 14:52

Instrument : MSVOA_W
 Client Sampled : EW819



Tgt Ion: 43 Resp: 8669
 Ion Ratio Lower Upper
 43 100
 72 7.2 13.8 41.3#



#48
 2-Hexanone
 Concen: 4.494 ug/L
 RT: 10.927 min Scan# 1480
 Delta R.T. -0.036 min
 Lab File: VW024676.D
 Acq: 29 Sep 2022 14:52

Tgt Ion: 43 Resp: 14310
 Ion Ratio Lower Upper
 43 100
 58 16.8 45.3 67.9#
 57 18.3 16.3 24.5
 100 0.7 10.4 15.6#

