

Data Path : Z:\voasrv\HPCHEM1\MSVOA_W\Data\VW100322\
 Data File : VW024707.D
 Acq On : 03 Oct 2022 13:14
 Operator : SY/VA
 Sample : N4852-04RE
 Misc : 4.50g/10mL/MSVOA_W/SOIL
 ALS Vial : 1 Sample Multiplier: 1

Instrument :
 MSVOA_W
 ClientSampleId :
 EW808

Quant Time: Oct 04 07:51:16 2022
 Quant Method : Z:\voasrv\HPCHEM1\MSVOA_W\Method\SFAMWLM092622SMA.M
 Quant Title : SFAM01.0
 QLast Update : Fri Sep 30 22:12:13 2022
 Response via : Initial Calibration

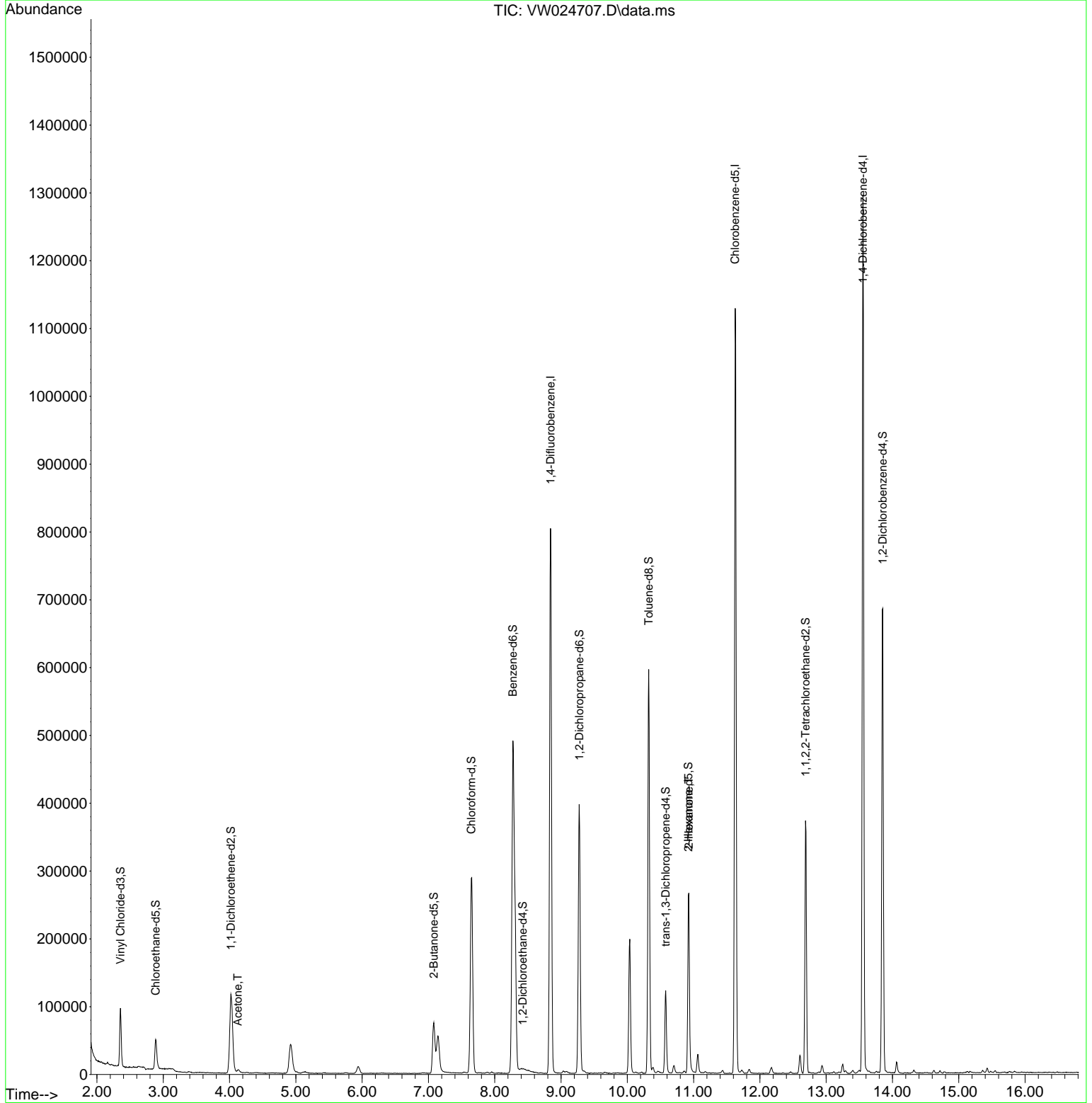
Compound	R.T.	QIon	Response	Conc	Units	Dev(Min)
Internal Standards						
1) 1,4-Difluorobenzene	8.842	114	687818	25.000	ug/L	0.00
28) Chlorobenzene-d5	11.628	117	631874	25.000	ug/L	0.00
58) 1,4-Dichlorobenzene-d4	13.554	152	316310	25.000	ug/L	0.00
System Monitoring Compounds						
4) Vinyl Chloride-d3	2.355	65	82598	11.478	ug/L	0.00
Spiked Amount	25.000	Range 30 - 150	Recovery =	45.920%		
7) Chloroethane-d5	2.885	69	49856	11.922	ug/L	0.00
Spiked Amount	25.000	Range 30 - 150	Recovery =	47.680%		
11) 1,1-Dichloroethene-d2	4.019	63	110560	6.638	ug/L	0.00
Spiked Amount	25.000	Range 45 - 110	Recovery =	26.560%#		
21) 2-Butanone-d5	7.080	46	129573	50.081	ug/L	0.00
Spiked Amount	50.000	Range 20 - 135	Recovery =	100.160%		
24) Chloroform-d	7.647	84	301707	16.408	ug/L	0.00
Spiked Amount	25.000	Range 40 - 150	Recovery =	65.640%		
26) 1,2-Dichloroethane-d4	8.421	65	117	0.012	ug/L	0.12
Spiked Amount	25.000	Range 70 - 130	Recovery =	0.040%#		
32) Benzene-d6	8.275	84	501561	12.419	ug/L	0.00
Spiked Amount	25.000	Range 20 - 135	Recovery =	49.680%		
36) 1,2-Dichloropropane-d6	9.275	67	192839	15.627	ug/L	0.00
Spiked Amount	25.000	Range 70 - 120	Recovery =	62.520%#		
41) Toluene-d8	10.323	98	391702	10.851	ug/L	0.00
Spiked Amount	25.000	Range 30 - 130	Recovery =	43.400%		
43) trans-1,3-Dichloroprop...	10.579	79	67753	12.329	ug/L	0.00
Spiked Amount	25.000	Range 30 - 135	Recovery =	49.320%		
47) 2-Hexanone-d5	10.921	63	96008	45.474	ug/L	0.00
Spiked Amount	50.000	Range 20 - 135	Recovery =	90.940%		
56) 1,1,2,2-Tetrachloroeth...	12.689	84	194639	22.137	ug/L	0.00
Spiked Amount	25.000	Range 45 - 120	Recovery =	88.560%		
66) 1,2-Dichlorobenzene-d4	13.853	152	177652	15.961	ug/L	0.00
Spiked Amount	25.000	Range 75 - 120	Recovery =	63.840%#		
Target Compounds						
13) Acetone	4.123	43	9018	4.777	ug/L	97
48) 2-Hexanone	10.927	43	11410	2.611	ug/L #	69

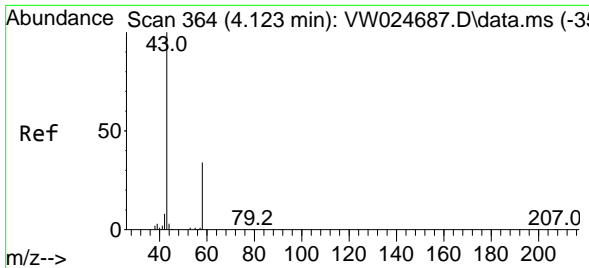
(#) = qualifier out of range (m) = manual integration (+) = signals summed

Data Path : Z:\voasrv\HPCHEM1\MSVOA_W\Data\VW100322\
 Data File : VW024707.D
 Acq On : 03 Oct 2022 13:14
 Operator : SY/VA
 Sample : N4852-04RE
 Misc : 4.50g/10mL/MSVOA_W/SOIL
 ALS Vial : 1 Sample Multiplier: 1

Instrument :
 MSVOA_W
 ClientSampleId :
 EW808

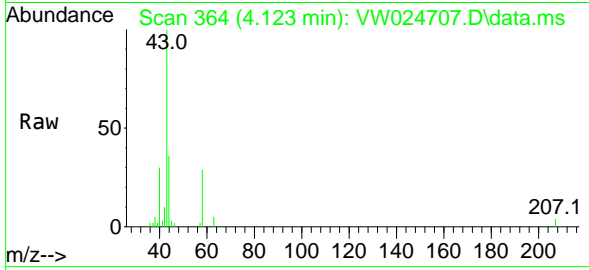
Quant Time: Oct 04 07:51:16 2022
 Quant Method : Z:\voasrv\HPCHEM1\MSVOA_W\Method\SFAMWLM092622SMA.M
 Quant Title : SFAM01.0
 QLast Update : Fri Sep 30 22:12:13 2022
 Response via : Initial Calibration



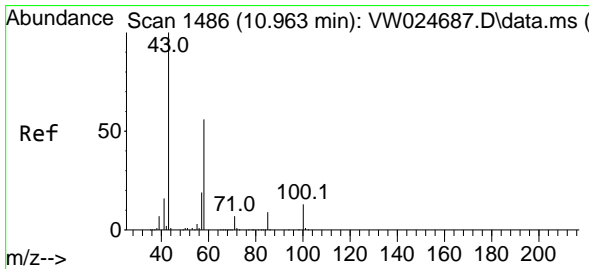
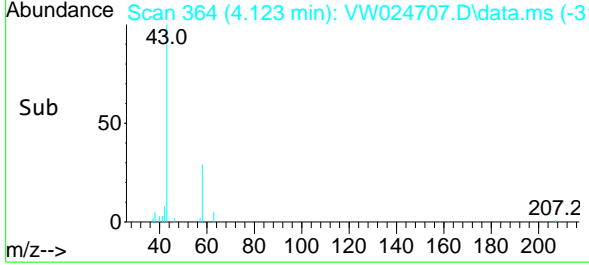
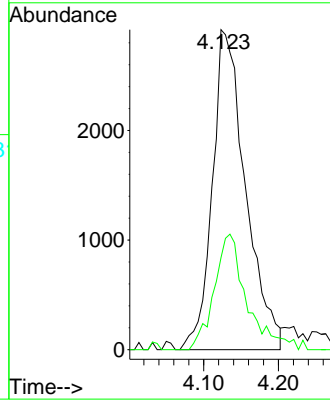


#13
 Acetone
 Concen: 4.777 ug/L
 RT: 4.123 min Scan# 30
 Delta R.T. 0.000 min
 Lab File: VW024707.D
 Acq: 03 Oct 2022 13:14

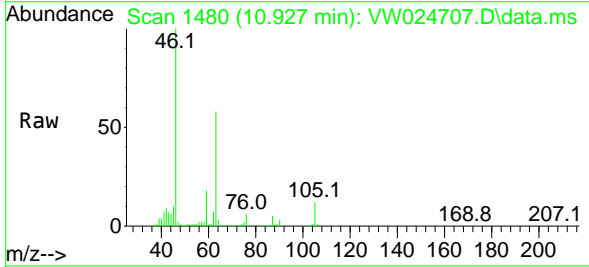
Instrument : MSVOA_W
 ClientSampleId : EW808



Tgt Ion: 43 Resp: 9018
 Ion Ratio Lower Upper
 43 100
 58 32.0 0.0 67.6



#48
 2-Hexanone
 Concen: 2.611 ug/L
 RT: 10.927 min Scan# 1480
 Delta R.T. -0.037 min
 Lab File: VW024707.D
 Acq: 03 Oct 2022 13:14



Tgt Ion: 43 Resp: 11410
 Ion Ratio Lower Upper
 43 100
 58 27.2 45.3 67.9#
 57 22.8 16.3 24.5
 100 0.9 10.4 15.6#

