

Data Path : Z:\voasrv\HPCHEM1\MSVOA_W\Data\VW100423\
 Data File : VW027219.D
 Acq On : 04 Oct 2023 15:51
 Operator : SY/MD
 Sample : 04747-05
 Misc : 3.04g/10mL/MSVOA_W/SOIL
 ALS Vial : 1 Sample Multiplier: 1

Instrument :
 MSVOA_W
ClientSampleId :
 EX840

Quant Time: Oct 04 22:52:14 2023
 Quant Method : Z:\voasrv\HPCHEM1\MSVOA_W\Method\SFAMWLM092723SMA.M
 Quant Title : SFAM01.0
 QLast Update : Wed Oct 04 22:49:04 2023
 Response via : Initial Calibration

Manual Integrations
APPROVED
 Reviewed By :Semsettin Yesilyurt 10/05/2023
 Supervised By :Mahesh Dadoda 10/05/2023

Compound	R.T.	QIon	Response	Conc	Units	Dev(Min)
Internal Standards						
1) 1,4-Difluorobenzene	8.837	114	712181	25.000	ug/L	0.00
28) Chlorobenzene-d5	11.629	117	608943	25.000	ug/L	0.00
58) 1,4-Dichlorobenzene-d4	13.556	152	216442	25.000	ug/L	0.00
System Monitoring Compounds						
4) Vinyl Chloride-d3	2.369	65	367878	32.877	ug/L	0.00
Spiked Amount	25.000	Range 30 - 150	Recovery	=	131.520%	
7) Chloroethane-d5	2.899	69	289760	32.765	ug/L	0.00
Spiked Amount	25.000	Range 30 - 150	Recovery	=	131.040%	
11) 1,1-Dichloroethene-d2	4.021	65	111305	23.942	ug/L	0.00
Spiked Amount	25.000	Range 45 - 110	Recovery	=	95.760%	
21) 2-Butanone-d5	7.075	46	99244	42.904	ug/L	0.00
Spiked Amount	50.000	Range 20 - 135	Recovery	=	85.800%	
24) Chloroform-d	7.648	84	478291	22.947	ug/L	0.00
Spiked Amount	25.000	Range 40 - 150	Recovery	=	91.800%	
26) 1,2-Dichloroethane-d4	8.301	65	236173m	23.643	ug/L	0.00
Spiked Amount	25.000	Range 70 - 130	Recovery	=	94.560%	
32) Benzene-d6	8.270	84	975319	26.134	ug/L	0.00
Spiked Amount	25.000	Range 20 - 135	Recovery	=	104.520%	
36) 1,2-Dichloropropane-d6	9.270	67	287854	25.764	ug/L	0.00
Spiked Amount	25.000	Range 70 - 120	Recovery	=	103.040%	
41) Toluene-d8	10.319	98	831129	25.237	ug/L	0.00
Spiked Amount	25.000	Range 30 - 130	Recovery	=	100.960%	
43) trans-1,3-Dichloroprop...	10.575	79	112938	25.758	ug/L	0.00
Spiked Amount	25.000	Range 30 - 135	Recovery	=	103.040%	
47) 2-Hexanone-d5	10.922	63	93479	54.693	ug/L	0.00
Spiked Amount	50.000	Range 20 - 135	Recovery	=	109.380%	
56) 1,1,2,2-Tetrachloroeth...	12.690	84	192511	22.514	ug/L	0.00
Spiked Amount	25.000	Range 45 - 120	Recovery	=	90.040%	
66) 1,2-Dichlorobenzene-d4	13.849	152	164735	22.700	ug/L	0.00
Spiked Amount	25.000	Range 75 - 120	Recovery	=	90.800%	
Target Compounds						
16) Methylene chloride	4.917	84	43272	3.104	ug/L	94
20) cis-1,2-Dichloroethene	7.173	96	9780	0.774	ug/L	98
30) 1,1,1-Trichloroethane	7.874	97	74383	4.914	ug/L	99
31) Carbon tetrachloride	8.069	117	122908	8.596	ug/L	98
34) Trichloroethene	9.093	95	41596	3.701	ug/L	94
46) Tetrachloroethene	10.861	164	1337279	151.359	ug/L	98

(#) = qualifier out of range (m) = manual integration (+) = signals summed

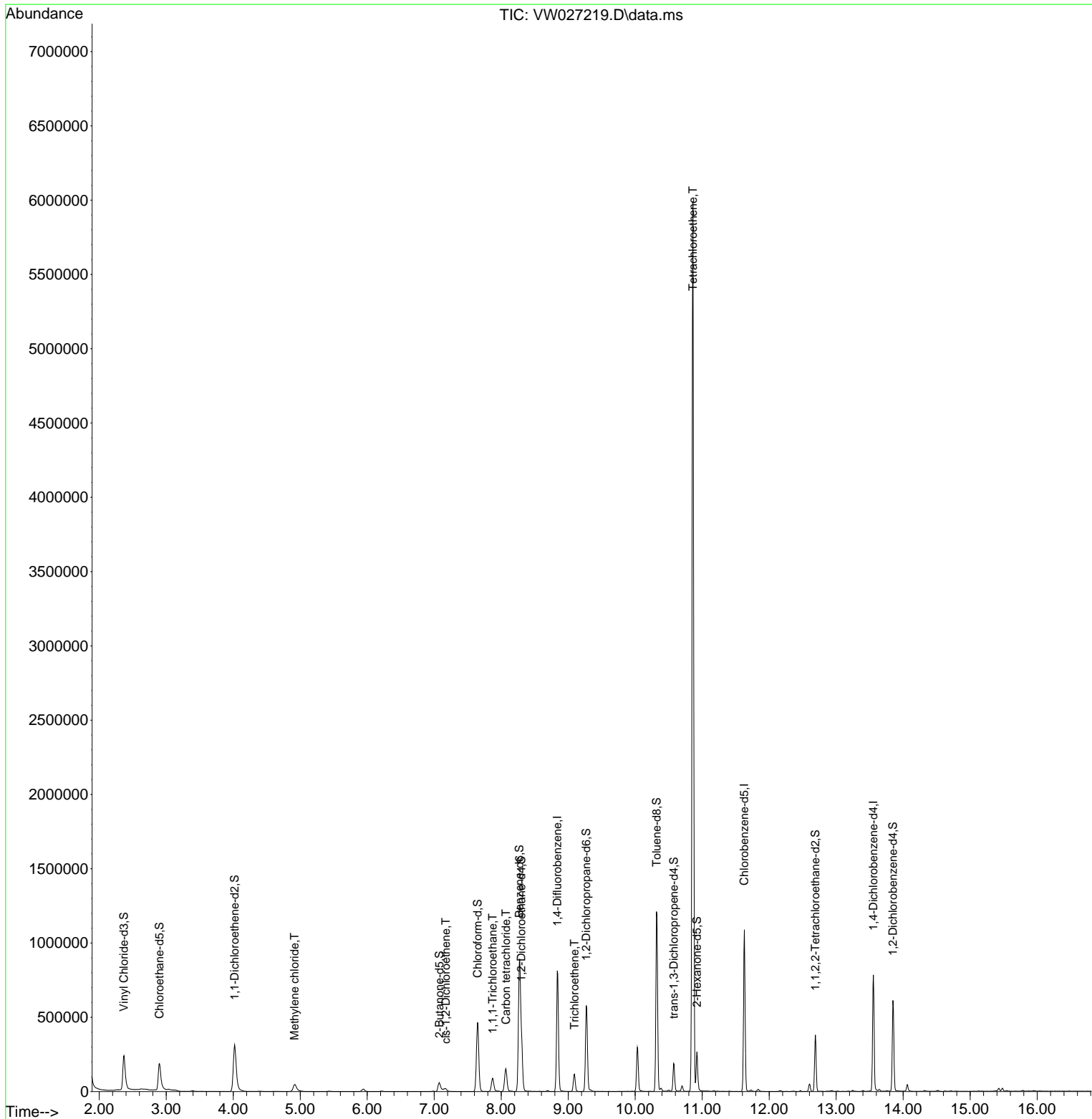
Data Path : Z:\voasrv\HPCHEM1\MSVOA_W\Data\VW100423\
 Data File : VW027219.D
 Acq On : 04 Oct 2023 15:51
 Operator : SY/MD
 Sample : 04747-05
 Misc : 3.04g/10mL/MSVOA_W/SOIL
 ALS Vial : 1 Sample Multiplier: 1

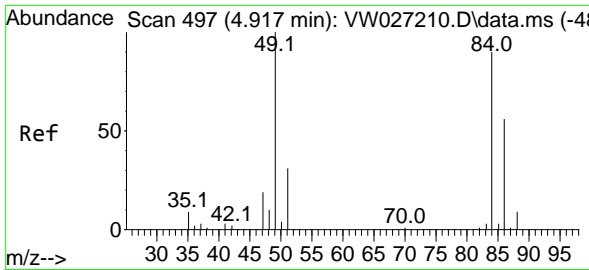
Instrument :
 MSVOA_W
 ClientSampleId :
 EX840

Quant Time: Oct 04 22:52:14 2023
 Quant Method : Z:\voasrv\HPCHEM1\MSVOA_W\Method\SFAMWLM092723SMA.M
 Quant Title : SFAM01.0
 QLast Update : Wed Oct 04 22:49:04 2023
 Response via : Initial Calibration

Manual Integrations
APPROVED

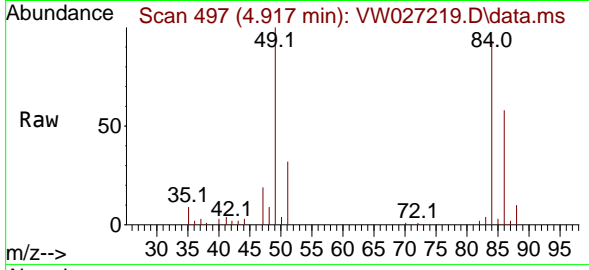
Reviewed By :Semsettin Yesilyurt 10/05/2023
 Supervised By :Mahesh Dadoda 10/05/2023





#16
 Methylene chloride
 Concen: 3.104 ug/L
 RT: 4.917 min Scan# 497
 Delta R.T. -0.000 min
 Lab File: VW027219.D
 Acq: 04 Oct 2023 15:51

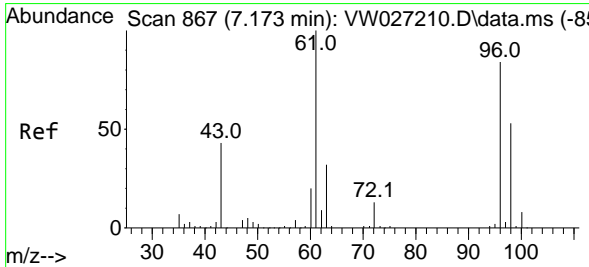
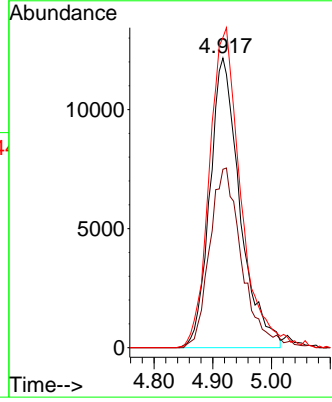
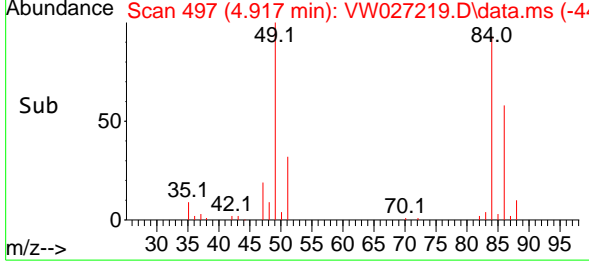
Instrument : MSVOA_W
 ClientSampled : EX840



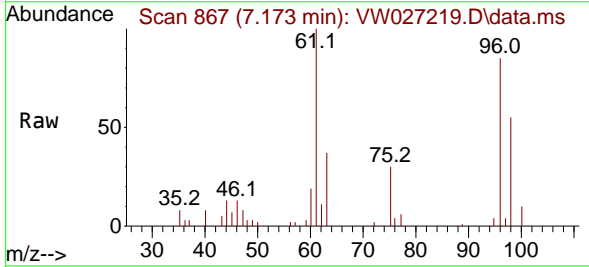
Tgt Ion: 84 Resp: 4327
 Ion Ratio Lower Upper
 84 100
 86 61.6 45.1 83.9
 49 107.1 80.9 150.3

Manual Integrations
APPROVED

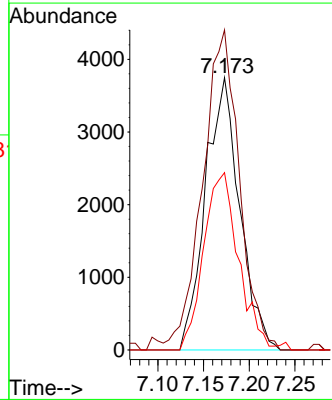
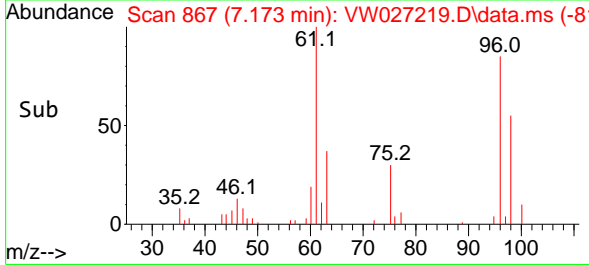
Reviewed By :Semsettin Yesilyurt 10/05/2023
 Supervised By :Mahesh Dadoda 10/05/2023

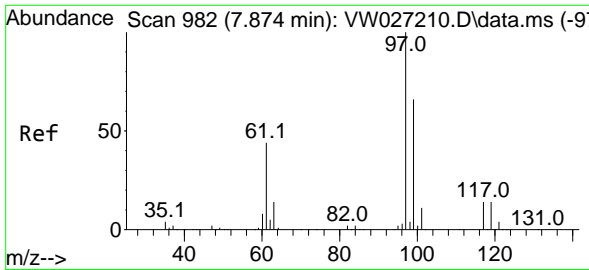


#20
 cis-1,2-Dichloroethene
 Concen: 0.774 ug/L
 RT: 7.173 min Scan# 867
 Delta R.T. -0.000 min
 Lab File: VW027219.D
 Acq: 04 Oct 2023 15:51



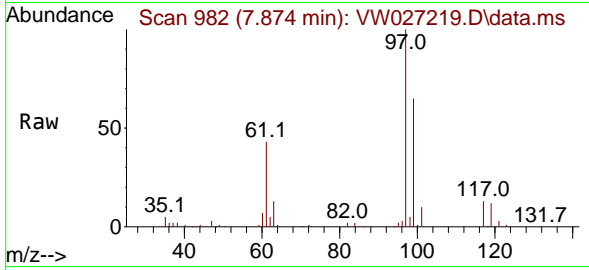
Tgt Ion: 96 Resp: 9780
 Ion Ratio Lower Upper
 96 100
 61 117.5 82.7 153.5
 98 65.1 43.0 80.0





#30
 1,1,1-Trichloroethane
 Concen: 4.914 ug/L
 RT: 7.874 min Scan# 982
 Delta R.T. -0.000 min
 Lab File: VW027219.D
 Acq: 04 Oct 2023 15:51

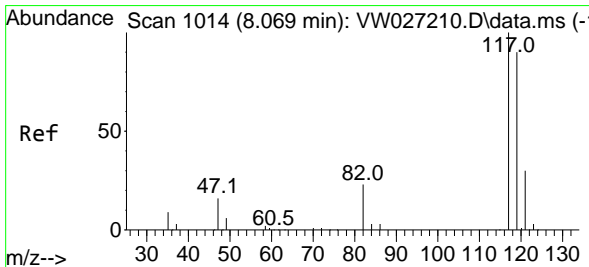
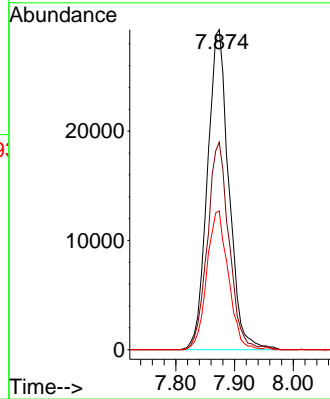
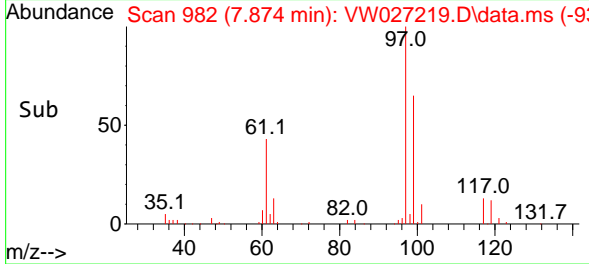
Instrument : MSVOA_W
 Client Sample Id : EX840



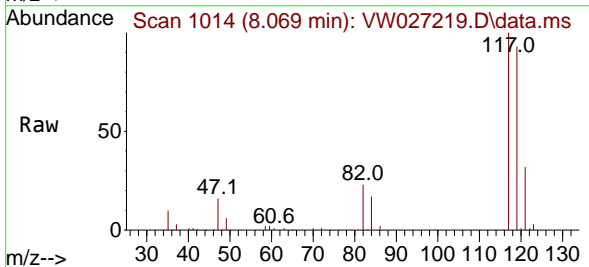
Tgt Ion: 97 Resp: 7438
 Ion Ratio Lower Upper
 97 100
 99 65.0 50.8 76.2
 61 43.4 34.6 52.0

Manual Integrations
APPROVED

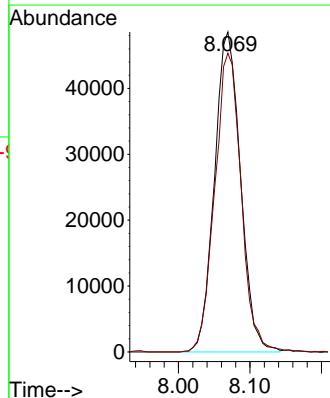
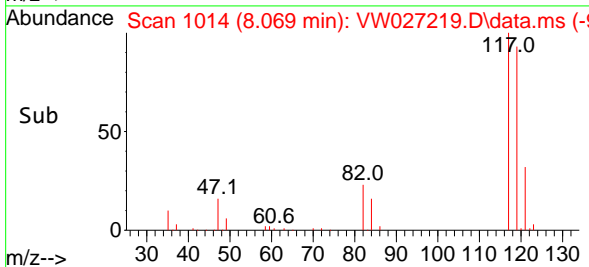
Reviewed By :Semsettin Yesilyurt 10/05/2023
 Supervised By :Mahesh Dadoda 10/05/2023

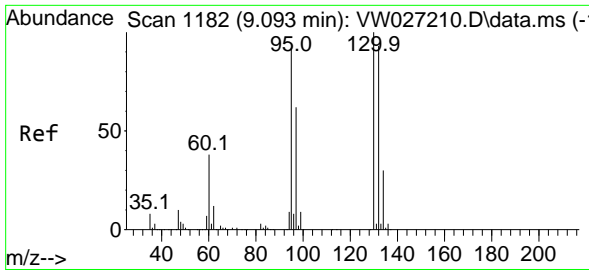


#31
 Carbon tetrachloride
 Concen: 8.596 ug/L
 RT: 8.069 min Scan# 1014
 Delta R.T. -0.000 min
 Lab File: VW027219.D
 Acq: 04 Oct 2023 15:51



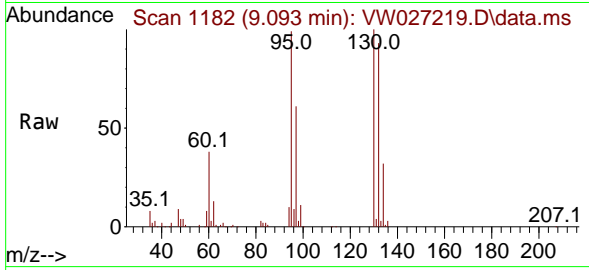
Tgt Ion:117 Resp: 122908
 Ion Ratio Lower Upper
 117 100
 119 94.7 77.0 115.6





#34
 Trichloroethene
 Concen: 3.701 ug/L
 RT: 9.093 min Scan# 1182
 Delta R.T. -0.000 min
 Lab File: VW027219.D
 Acq: 04 Oct 2023 15:51

Instrument : MSVOA_W
 ClientSampleId : EX840

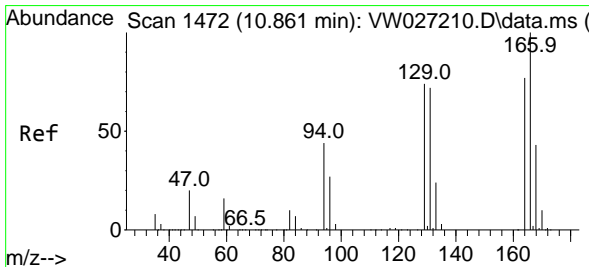
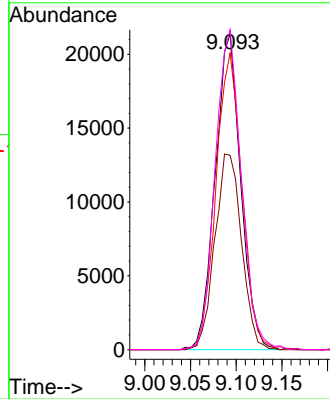
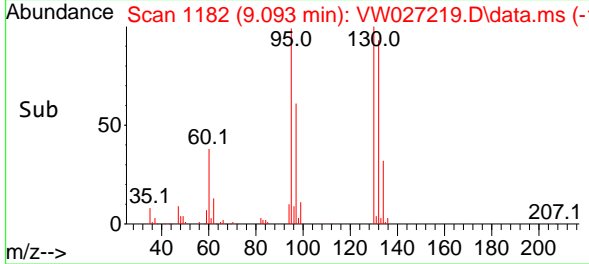


Tgt Ion: 95 Resp: 41590

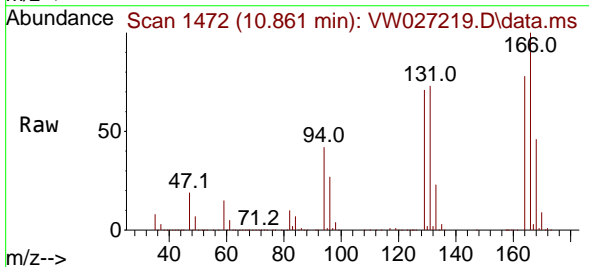
Ion	Ratio	Lower	Upper
95	100		
97	61.5	46.1	85.7
132	93.8	71.5	132.9
130	101.2	68.8	127.8

Manual Integrations
 APPROVED

Reviewed By :Semsettin Yesilyurt 10/05/2023
 Supervised By :Mahesh Dadoda 10/05/2023



#46
 Tetrachloroethene
 Concen: 151.359 ug/L
 RT: 10.861 min Scan# 1472
 Delta R.T. -0.000 min
 Lab File: VW027219.D
 Acq: 04 Oct 2023 15:51



Tgt Ion:164 Resp: 1337279

Ion	Ratio	Lower	Upper
164	100		
129	91.4	60.3	112.1
131	94.0	66.1	122.7
166	128.5	89.4	166.0

