

Data Path : Z:\voasrv\HPCHEM1\MSVOA_W\Data\VW100423\
 Data File : VW027224.D
 Acq On : 04 Oct 2023 17:51
 Operator : SY/MD
 Sample : VIBLK523
 Misc : 5.00g/10mL/MSVOA_W/SOIL
 ALS Vial : 1 Sample Multiplier: 1

Instrument :
 MSVOA_W
 ClientSampleId :
 VIBLK523

Integration Parameters: LSCINT.P

Integrator: RTE
 Smoothing : OFF
 Sampling : 1
 Start Thrs : 0.2
 Stop Thrs : 0

Filtering: 5
 Min Area: 0 % of largest Peak
 Max Peaks: 100
 Peak Location: TOP

If leading or trailing edge < 100 prefer < Baseline drop else tangent >
 Peak separation: 5

Method : Z:\voasrv\HPCHEM1\MSVOA_W\Method\SFAMWLM092723SMA.M
 Title : SFAM01.0

Signal : TIC: VW027224.D\data.ms

peak #	R.T. min	first scan	max scan	last scan	PK TY	peak height	corr. area	corr. % max.	% of total
1	2.369	73	79	93	rVB	132652	345688	17.71%	2.252%
2	2.893	159	165	184	rVB	123854	346134	17.73%	2.255%
3	3.936	334	336	338	rBV2	676	420	0.02%	0.003%
4	4.027	340	351	378	rVB	241688	818382	41.92%	5.331%
5	4.643	450	452	455	rBV4	982	1239	0.06%	0.008%
6	4.746	467	469	470	rBV	603	403	0.02%	0.003%
7	4.917	487	497	517	rBV	58476	212858	10.90%	1.386%
8	5.338	565	566	568	rBV2	381	326	0.02%	0.002%
9	5.399	573	576	579	rBV3	750	1173	0.06%	0.008%
10	5.502	592	593	595	rBV2	554	415	0.02%	0.003%
11	5.630	612	614	618	rBV2	550	769	0.04%	0.005%
12	5.661	618	619	621	rBV2	578	508	0.03%	0.003%
13	5.935	654	664	666	rBV3	16789	32513	1.67%	0.212%
14	6.057	682	684	687	rVB2	394	407	0.02%	0.003%
15	6.179	702	704	706	rVB	631	544	0.03%	0.004%
16	6.197	706	707	708	rBV	526	302	0.02%	0.002%
17	6.216	708	710	712	rVV	773	538	0.03%	0.004%
18	6.392	736	739	741	rVB2	637	556	0.03%	0.004%
19	6.411	741	742	743	rBV	581	312	0.02%	0.002%
20	6.459	748	750	752	rBV	592	384	0.02%	0.003%
21	6.630	776	778	780	rBV2	604	531	0.03%	0.003%
22	6.905	821	823	826	rBV2	876	842	0.04%	0.005%
23	6.935	826	828	829	rVV2	786	412	0.02%	0.003%
24	7.081	843	852	856	rBV	56085	150040	7.68%	0.977%
25	7.423	906	908	910	rVB3	620	510	0.03%	0.003%
26	7.514	922	923	925	rBV	469	393	0.02%	0.003%
27	7.648	934	945	963	rVV	349005	843737	43.22%	5.496%
28	7.831	973	975	976	rBV2	476	322	0.02%	0.002%
29	7.843	976	977	979	rVV	428	367	0.02%	0.002%
30	7.868	979	981	982	rVV	459	314	0.02%	0.002%
31	7.886	982	984	987	rVB3	418	433	0.02%	0.003%
32	7.917	987	989	992	rVB2	743	576	0.03%	0.004%
33	7.947	992	994	995	rBV2	662	328	0.02%	0.002%
34	7.959	995	996	1001	rBV2	693	935	0.05%	0.006%
35	8.063	1009	1013	1017	rBV2	639	1199	0.06%	0.008%
36	8.112	1020	1021	1025	rVB2	811	675	0.03%	0.004%

Data Path : Z:\voasrv\HPCHEM1\MSVOA_W\Data\VW100423\
 Data File : VW027224.D
 Acq On : 04 Oct 2023 17:51
 Operator : SY/MD
 Sample : VIBLK523
 Misc : 5.00g/10mL/MSVOA_W/SOIL
 ALS Vial : 1 Sample Multiplier: 1

Instrument :
 MSVOA_W
 ClientSampleId :
 VIBLK523

Integration Parameters: LSCINT.P

Integrator: RTE
 Smoothing : OFF
 Sampling : 1
 Start Thrs: 0.2
 Stop Thrs : 0

Filtering: 5
 Min Area: 0 % of largest Peak
 Max Peaks: 100
 Peak Location: TOP

If leading or trailing edge < 100 prefer < Baseline drop else tangent >
 Peak separation: 5

Method : Z:\voasrv\HPCHEM1\MSVOA_W\Method\SFAMWLM092723SMA.M
 Title : SFAM01.0

37	8.160	1027	1029	1032	rVB2	487	435	0.02%	0.003%
38	8.191	1032	1034	1036	rBV	316	332	0.02%	0.002%
39	8.276	1036	1048	1072	rBV2	674614	1952386	100.00%	12.717%
40	8.459	1077	1078	1082	rVV3	814	805	0.04%	0.005%
41	8.520	1086	1088	1091	rVB3	724	455	0.02%	0.003%
42	8.563	1093	1095	1098	rVB3	567	585	0.03%	0.004%
43	8.605	1099	1102	1104	rBV3	500	533	0.03%	0.003%
44	8.691	1113	1116	1118	rVV2	1051	891	0.05%	0.006%
45	8.843	1132	1141	1161	rBV	651736	1269088	65.00%	8.266%
46	9.069	1175	1178	1179	rBV3	1828	2059	0.11%	0.013%
47	9.276	1203	1212	1220	rBV	432428	884307	45.29%	5.760%
48	9.404	1232	1233	1236	rBV2	576	535	0.03%	0.003%
49	9.538	1252	1255	1256	rBV	419	440	0.02%	0.003%
50	9.599	1262	1265	1266	rVB3	377	334	0.02%	0.002%
51	9.654	1270	1274	1275	rBV2	924	1030	0.05%	0.007%
52	9.770	1291	1293	1294	rBV2	636	502	0.03%	0.003%
53	9.922	1316	1318	1321	rBV2	443	384	0.02%	0.003%
54	9.983	1326	1328	1329	rBV2	1314	1383	0.07%	0.009%
55	10.032	1330	1336	1351	rVB	256888	484541	24.82%	3.156%
56	10.325	1375	1384	1400	rBV	1072473	1913168	97.99%	12.462%
57	10.575	1419	1425	1435	rVB	171131	295666	15.14%	1.926%
58	10.703	1439	1446	1454	rVB	97078	168623	8.64%	1.098%
59	10.922	1475	1482	1496	rBV2	222203	389201	19.93%	2.535%
60	11.062	1500	1505	1516	rVV2	17985	31195	1.60%	0.203%
61	11.178	1518	1524	1527	rBV5	3110	5660	0.29%	0.037%
62	11.282	1540	1541	1542	rBV	766	295	0.02%	0.002%
63	11.337	1547	1550	1556	rBV5	1078	1968	0.10%	0.013%
64	11.404	1556	1561	1562	rBV5	2347	2847	0.15%	0.019%
65	11.440	1562	1567	1571	rVB3	9919	17130	0.88%	0.112%
66	11.629	1590	1598	1611	rBV	922829	1502832	76.97%	9.789%
67	11.934	1646	1648	1650	rVB2	853	608	0.03%	0.004%
68	11.952	1650	1651	1653	rBV2	594	427	0.02%	0.003%
69	12.032	1661	1664	1667	rBV3	623	830	0.04%	0.005%
70	12.117	1675	1678	1679	rBV2	344	354	0.02%	0.002%
71	12.184	1687	1689	1690	rBB2	836	470	0.02%	0.003%
72	12.312	1707	1710	1711	rBV2	464	374	0.02%	0.002%
73	12.434	1729	1730	1731	rBV	533	325	0.02%	0.002%
74	12.471	1731	1736	1740	rVB5	3234	5052	0.26%	0.033%
75	12.605	1751	1758	1764	rBV	70232	112683	5.77%	0.734%
76	12.690	1765	1772	1781	rVV	358399	584837	29.95%	3.809%

Data Path : Z:\voasrv\HPCHEM1\MSVOA_W\Data\VW100423\
 Data File : VW027224.D
 Acq On : 04 Oct 2023 17:51
 Operator : SY/MD
 Sample : VIBLK523
 Misc : 5.00g/10mL/MSVOA_W/SOIL
 ALS Vial : 1 Sample Multiplier: 1

Instrument :
 MSVOA_W
 ClientSampleId :
 VIBLK523

Integration Parameters: LSCINT.P

Integrator: RTE
 Smoothing : OFF Filtering: 5
 Sampling : 1 Min Area: 0 % of largest Peak
 Start Thrs: 0.2 Max Peaks: 100
 Stop Thrs : 0 Peak Location: TOP

If leading or trailing edge < 100 prefer < Baseline drop else tangent >
 Peak separation: 5

Method : Z:\voasrv\HPCHEM1\MSVOA_W\Method\SFAMWLM092723SMA.M
 Title : SFAM01.0

77	12.806	1788	1791	1796	rVB4	470	824	0.04%	0.005%
78	12.867	1796	1801	1802	rBV3	438	589	0.03%	0.004%
79	12.885	1802	1804	1806	rBV2	667	600	0.03%	0.004%
80	12.928	1807	1811	1817	rBV4	4688	7889	0.40%	0.051%
81	13.111	1839	1841	1842	rBV2	370	295	0.02%	0.002%
82	13.129	1842	1844	1845	rVB2	515	287	0.01%	0.002%
83	13.172	1849	1851	1852	rBV	712	480	0.02%	0.003%
84	13.220	1858	1859	1860	rBV	755	526	0.03%	0.003%
85	13.288	1866	1870	1875	rVB3	5854	9292	0.48%	0.061%
86	13.348	1879	1880	1882	rBV2	497	323	0.02%	0.002%
87	13.397	1883	1888	1894	rBV5	1869	3574	0.18%	0.023%
88	13.470	1897	1900	1901	rBV2	1046	1057	0.05%	0.007%
89	13.556	1907	1914	1925	rBV	966094	1515698	77.63%	9.873%
90	13.848	1955	1962	1974	rBV	772591	1266201	64.85%	8.248%
91	14.062	1992	1997	2004	rBV2	36969	61552	3.15%	0.401%
92	14.580	2081	2082	2085	rBV3	987	846	0.04%	0.006%
93	14.720	2101	2105	2108	rVB4	3255	4428	0.23%	0.029%
94	14.830	2121	2123	2125	rBV2	1380	1008	0.05%	0.007%
95	14.854	2125	2127	2128	rBV2	896	426	0.02%	0.003%
96	14.903	2133	2135	2139	rBV5	1090	1166	0.06%	0.008%
97	15.427	2216	2221	2226	rBV2	27673	45717	2.34%	0.298%
98	15.482	2226	2230	2236	rVB	12264	19771	1.01%	0.129%
99	15.616	2251	2252	2254	rBV2	1234	822	0.04%	0.005%
100	15.939	2301	2305	2314	rBV10	2465	7868	0.40%	0.051%

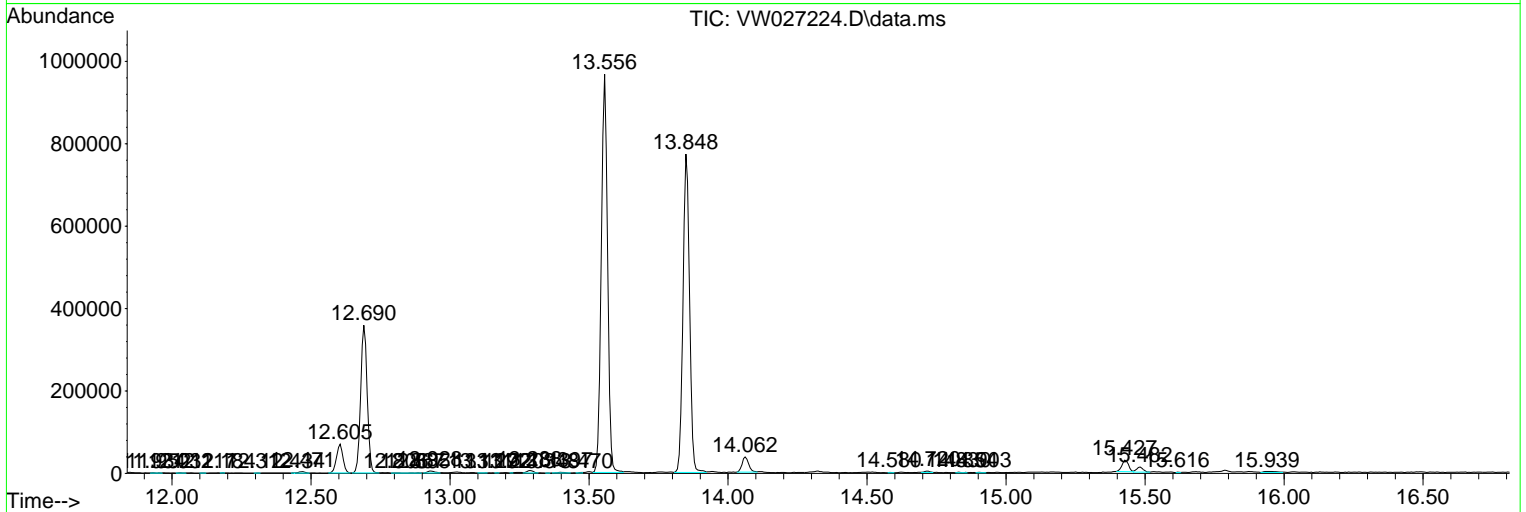
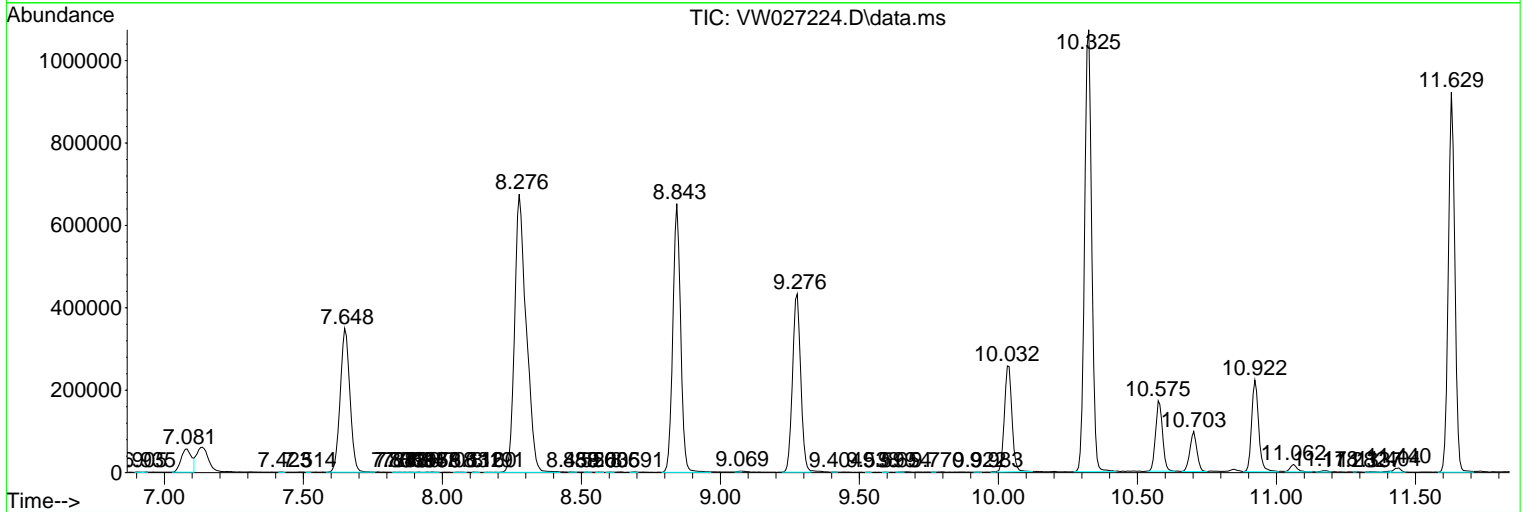
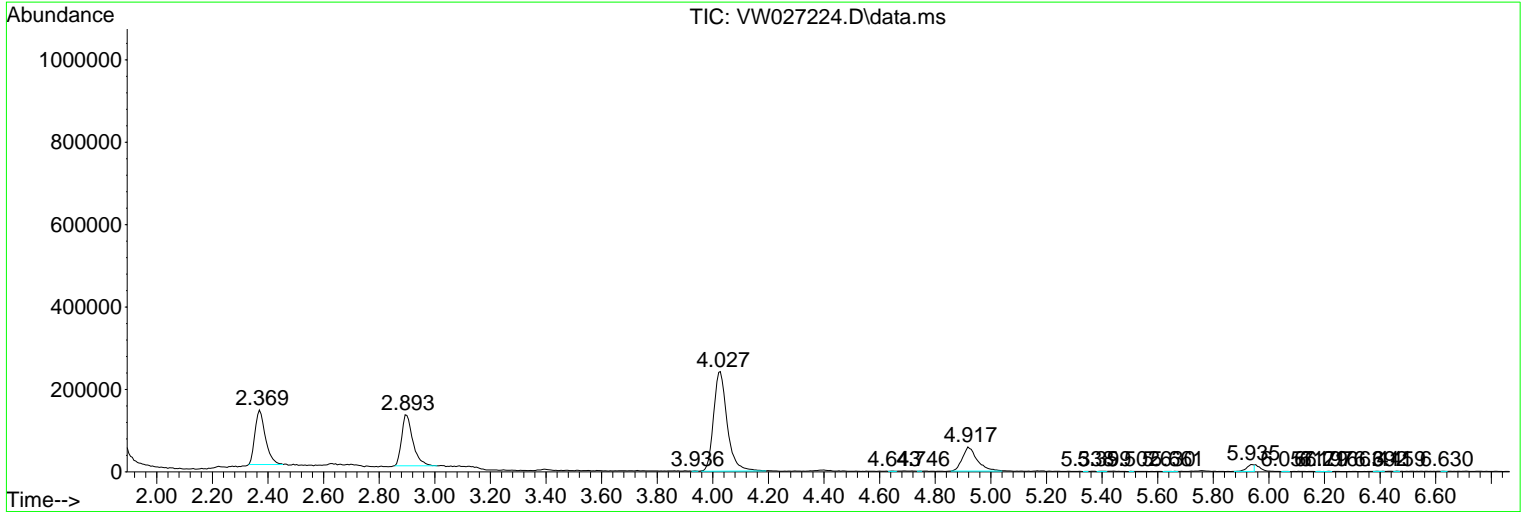
Sum of corrected areas: 15352294

Data Path : Z:\voasrv\HPCHEM1\MSVOA_W\Data\VW100423\
 Data File : VW027224.D
 Acq On : 04 Oct 2023 17:51
 Operator : SY/MD
 Sample : VIBLK523
 Misc : 5.00g/10mL/MSVOA_W/SOIL
 ALS Vial : 1 Sample Multiplier: 1

Instrument :
 MSVOA_W
 ClientSampleId :
 VIBLK523

Quant Method : Z:\voasrv\HPCHEM1\MSVOA_W\Method\SFAMWLM092723SMA.M
 Quant Title : SFAM01.0

TIC Library : C:\Database\NIST20.L
 TIC Integration Parameters: LSCINT.P



Library Search Compound Report

Data Path : Z:\voasrv\HPCHEM1\MSVOA_W\Data\VW100423\
Data File : VW027224.D
Acq On : 04 Oct 2023 17:51
Operator : SY/MD
Sample : VIBLK523
Misc : 5.00g/10mL/MSVOA_W/SOIL
ALS Vial : 1 Sample Multiplier: 1

Instrument :
MSVOA_W
ClientSampleId :
VIBLK523

Quant Method : Z:\voasrv\HPCHEM1\MSVOA_W\Method\SFAMWLM092723SMA.M
Quant Title : SFAM01.0

TIC Library : C:\Database\NIST20.L
TIC Integration Parameters: LSCINT.P

No Library Search Compounds Detected

Data Path : Z:\voasrv\HPCHEM1\MSVOA_W\Data\VW100423\
Data File : VW027224.D
Acq On : 04 Oct 2023 17:51
Operator : SY/MD
Sample : VIBLK523
Misc : 5.00g/10mL/MSVOA_W/SOIL
ALS Vial : 1 Sample Multiplier: 1

Instrument :
MSVOA_W
ClientSampleId :
VIBLK523

Quant Method : Z:\voasrv\HPCHEM1\MSVOA_W\Method\SFAMWLM092723SMA.M
Quant Title : SFAM01.0

TIC Library : C:\Database\NIST0.L
TIC Integration Parameters: LSCINT.P

TIC Top Hit name	RT	EstConc	Units	Response	#	RT	Resp	Conc
------------------	----	---------	-------	----------	---	----	------	------
