

Data Path : Z:\voasrv\HPCHEM1\MSVOA\_W\Data\VW100625\  
 Data File : VW032361.D  
 Acq On : 06 Oct 2025 15:54  
 Operator : SY/MD  
 Sample : Q3289-05  
 Misc : 4.80g/5mL/MSVOA\_W/SOIL/A  
 ALS Vial : 14 Sample Multiplier: 1

Instrument :  
 MSVOA\_W  
 ClientSampleId :  
 72-11966

Integration Parameters: RTEINT.P

Integrator: RTE  
 Smoothing : ON Filtering: 5  
 Sampling : 1 Min Area: 3 % of largest Peak  
 Start Thrs: 0.2 Max Peaks: 100  
 Stop Thrs : 0 Peak Location: TOP

If leading or trailing edge < 100 prefer < Baseline drop else tangent >  
 Peak separation: 5

Method : Z:\voasrv\HPCHEM1\MSVOA\_W\Method\82W100125S.M  
 Title : SW846 8260

Signal : TIC: VW032361.D\data.ms

peak #	R.T. min	first scan	max scan	last scan	PK TY	peak height	corr. area	corr. % max.	% of total
1	7.173	856	867	882	rBV2	19559	63225	1.09%	0.255%
2	7.904	974	987	991	rBV2	187895	452070	7.81%	1.826%
3	7.959	991	996	1008	rVB	264487	601814	10.40%	2.431%
4	8.319	1037	1055	1064	rBV2	201297	473113	8.17%	1.911%
5	8.849	1132	1142	1156	rBV	490931	1003161	17.33%	4.052%
6	10.325	1376	1384	1392	rBV	752091	1344117	23.22%	5.429%
7	11.062	1499	1505	1511	rBV2	36585	64465	1.11%	0.260%
8	11.288	1517	1542	1543	rBV	48160	160675	2.78%	0.649%
9	11.629	1591	1598	1611	rVB	808526	1385957	23.94%	5.598%
10	12.398	1697	1724	1751	rBV3	105251	701274	12.11%	2.832%
11	12.617	1752	1760	1770	rVB	609848	1007371	17.40%	4.069%
12	12.849	1771	1798	1799	rBV2	318668	1029190	17.78%	4.157%
13	13.281	1847	1869	1883	rBV3	450160	2016080	34.82%	8.142%
14	13.434	1883	1894	1907	rVV2	260417	1145237	19.78%	4.625%
15	13.556	1907	1914	1929	rVB	942773	1505403	26.00%	6.080%
16	13.848	1951	1962	1967	rBV2	55339	202231	3.49%	0.817%
17	13.934	1968	1976	1988	rVV4	156821	614892	10.62%	2.483%
18	14.056	1989	1996	2009	rVB4	32575	107356	1.85%	0.434%
19	14.275	2019	2032	2051	rVB3	64635	253647	4.38%	1.024%
20	14.519	2059	2072	2084	rBV2	147727	502401	8.68%	2.029%
21	14.745	2099	2109	2119	rVB4	58841	181717	3.14%	0.734%
22	14.934	2127	2140	2152	rBV	1855259	5789222	100.00%	23.381%
23	15.049	2152	2159	2169	rVV	103459	376116	6.50%	1.519%
24	15.135	2169	2173	2181	rVV6	43531	114891	1.98%	0.464%
25	15.226	2181	2188	2193	rVV5	25199	80251	1.39%	0.324%
26	15.324	2194	2204	2213	rVV2	216223	699552	12.08%	2.825%
27	15.470	2213	2228	2238	rVB3	82574	405635	7.01%	1.638%
28	15.623	2238	2253	2268	rBV2	501907	1847772	31.92%	7.463%
29	15.915	2291	2301	2302	rBV2	49566	103712	1.79%	0.419%
30	16.104	2321	2332	2340	rBV2	66716	213783	3.69%	0.863%
31	16.190	2342	2346	2358	rVB6	18570	59535	1.03%	0.240%
32	16.427	2374	2385	2395	rVV6	65433	254226	4.39%	1.027%

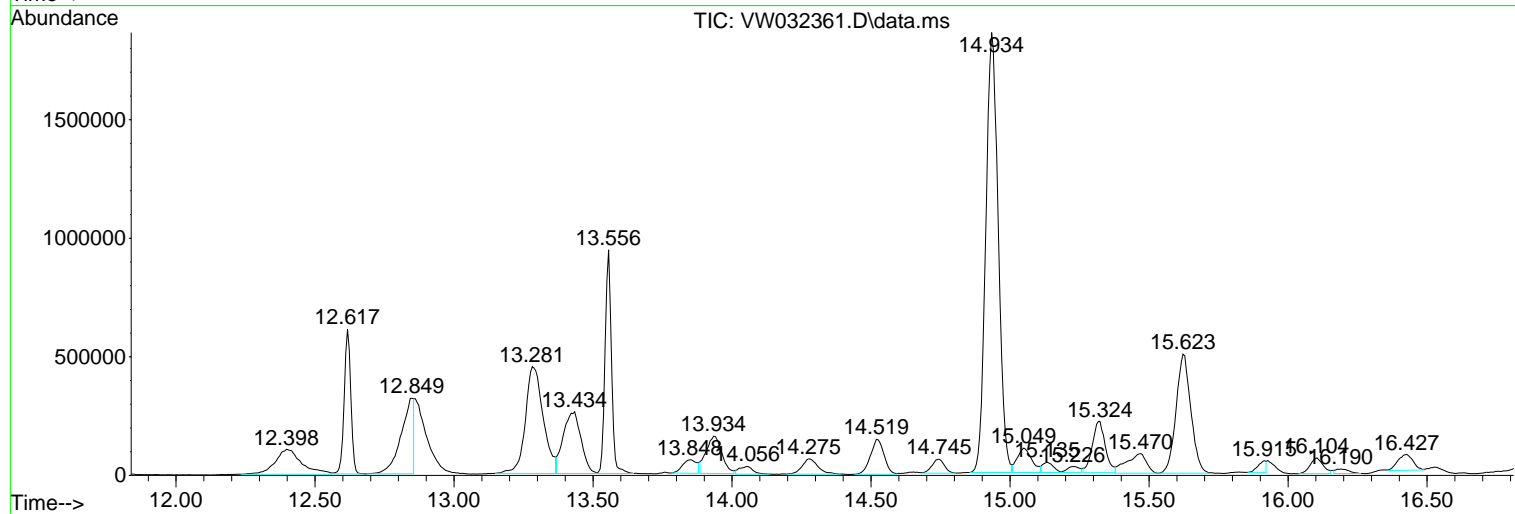
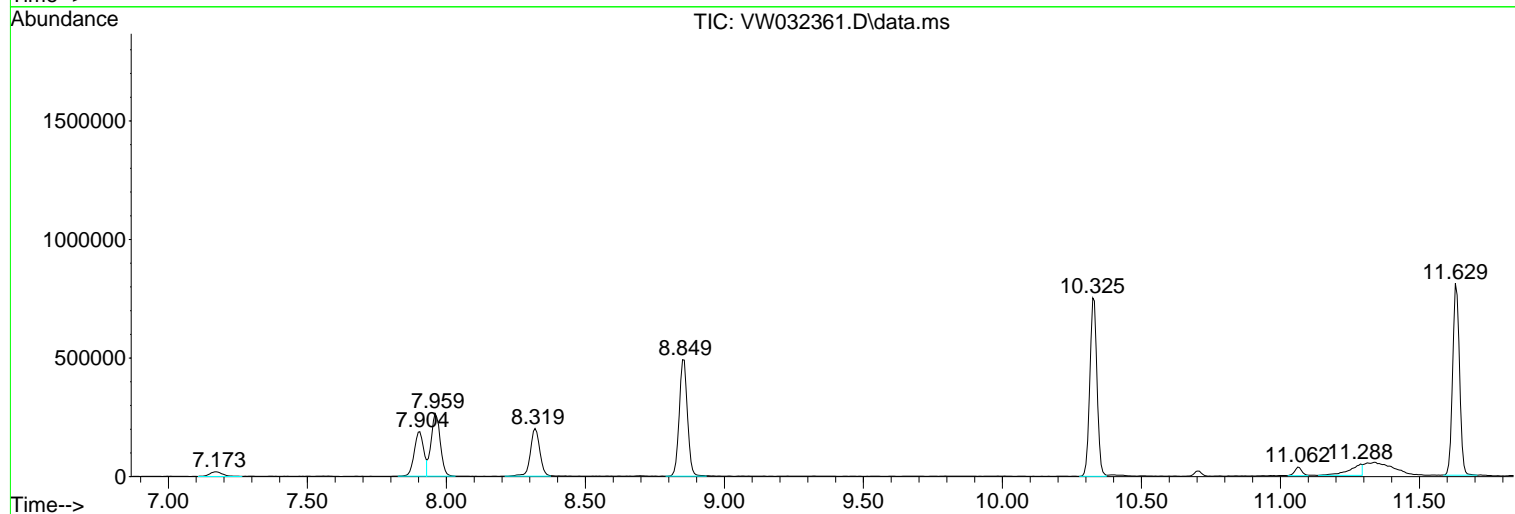
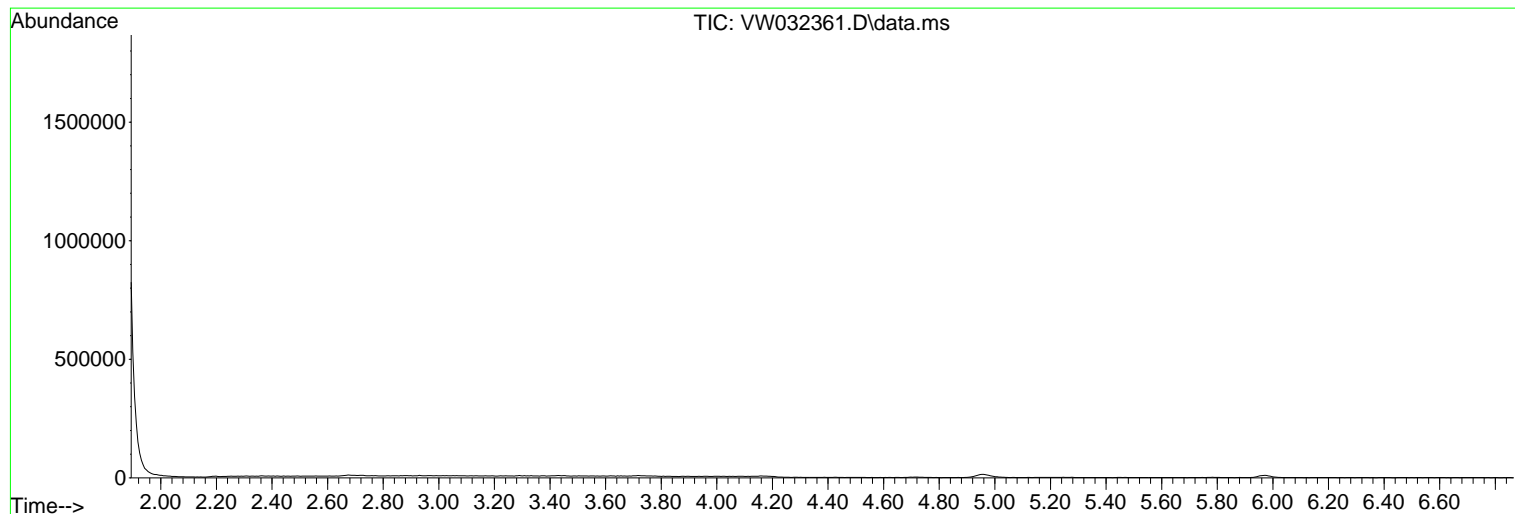
Sum of corrected areas: 24760091

Data Path : Z:\voasrv\HPCHEM1\MSVOA\_W\Data\VW100625\  
 Data File : VW032361.D  
 Acq On : 06 Oct 2025 15:54  
 Operator : SY/MD  
 Sample : Q3289-05  
 Misc : 4.80g/5mL/MSVOA\_W/SOIL/A  
 ALS Vial : 14 Sample Multiplier: 1

Instrument :  
 MSVOA\_W  
 ClientSampleId :  
 72-11966

Quant Method : Z:\voasrv\HPCHEM1\MSVOA\_W\Method\82W100125S.M  
 Quant Title : SW846 8260

TIC Library : C:\Database\NIST20.L  
 TIC Integration Parameters: LSCINT.P



Data Path : Z:\voasrv\HPCHEM1\MSVOA\_W\Data\VW100625\  
 Data File : VW032361.D  
 Acq On : 06 Oct 2025 15:54  
 Operator : SY/MD  
 Sample : Q3289-05  
 Misc : 4.80g/5mL/MSVOA\_W/SOIL/A  
 ALS Vial : 14 Sample Multiplier: 1

Instrument :  
 MSVOA\_W  
 ClientSampleId :  
 72-11966

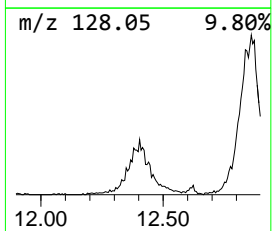
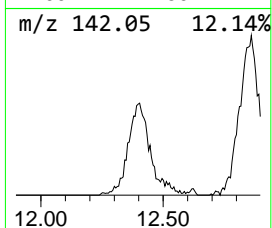
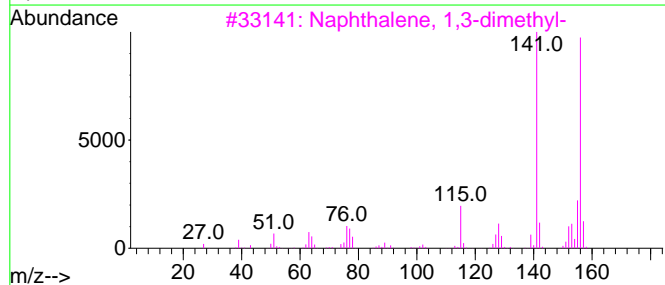
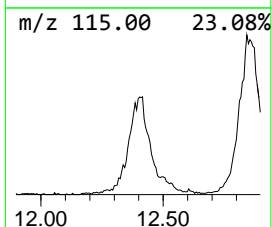
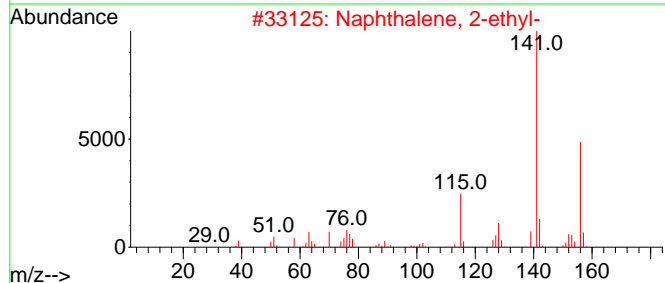
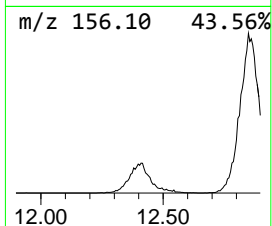
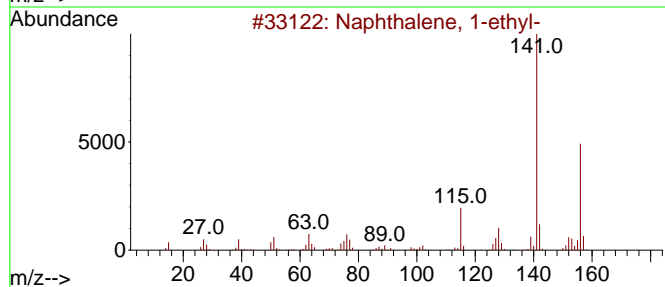
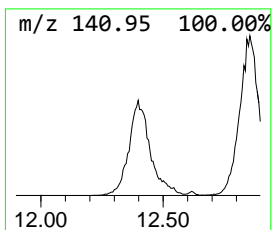
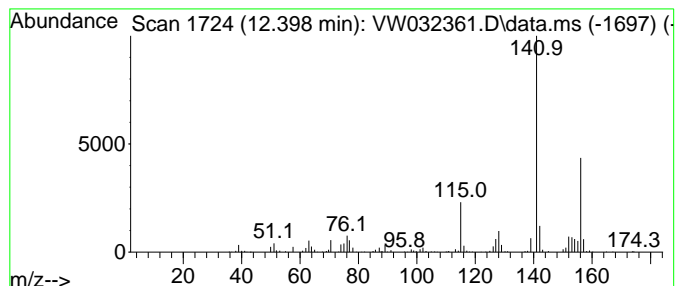
Quant Method : Z:\voasrv\HPCHEM1\MSVOA\_W\Method\82W100125S.M  
 Quant Title : SW846 8260

TIC Library : C:\Database\NIST20.L  
 TIC Integration Parameters: LSCINT.P

\*\*\*\*\*  
 Peak Number 1 Naphthalene, 1-ethyl- Concentration Rank 6

R.T.	EstConc	Area	Relative to ISTD	R.T.
12.398	25.30 ug/l	701274	Chlorobenzene-d5	11.629

Hit#	of	5	Tentative ID	MW	MolForm	CAS#	Qual
1			Naphthalene, 1-ethyl-	156	C12H12	001127-76-0	97
2			Naphthalene, 2-ethyl-	156	C12H12	000939-27-5	95
3			Naphthalene, 1,3-dimethyl-	156	C12H12	000575-41-7	80
4			2,4-Difluoromesitylene	156	C9H10F2	000392-61-0	59
5			2-Thiophenecarboxylic acid, 5-et...	156	C7H8O2S	023229-72-3	59



Data Path : Z:\voasrv\HPCHEM1\MSVOA\_W\Data\VW100625\  
 Data File : VW032361.D  
 Acq On : 06 Oct 2025 15:54  
 Operator : SY/MD  
 Sample : Q3289-05  
 Misc : 4.80g/5mL/MSVOA\_W/SOIL/A  
 ALS Vial : 14 Sample Multiplier: 1

Instrument :  
 MSVOA\_W  
 ClientSampleId :  
 72-11966

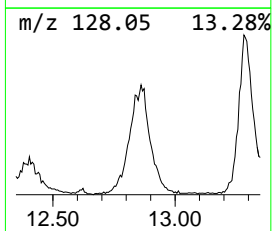
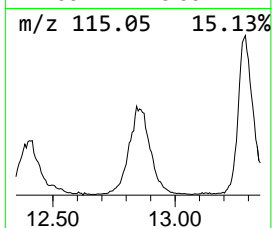
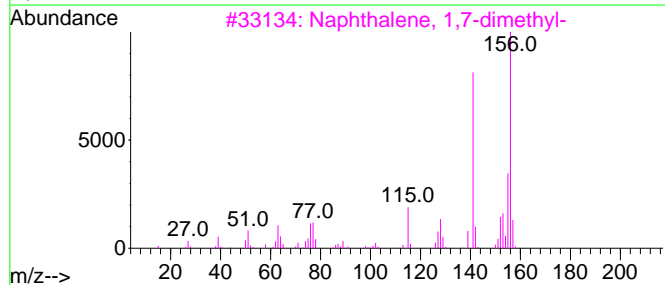
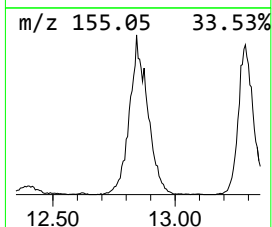
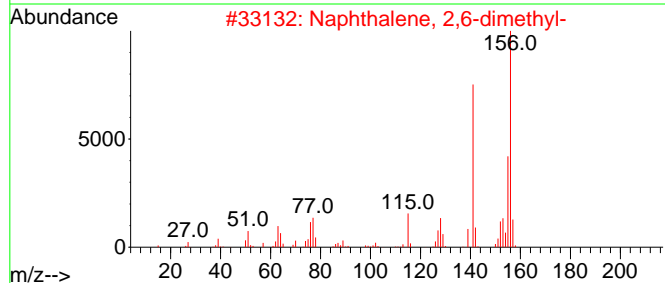
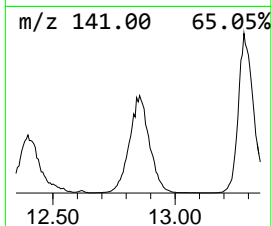
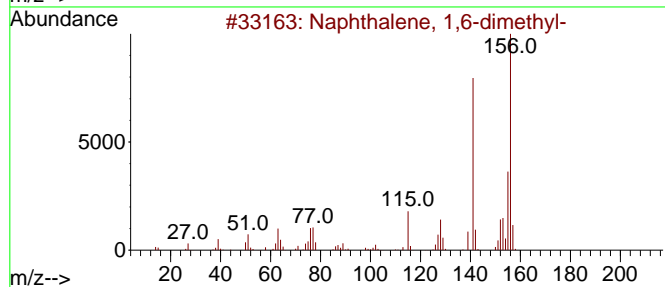
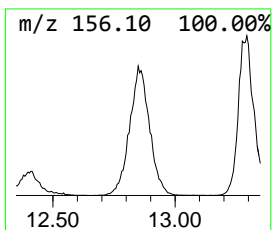
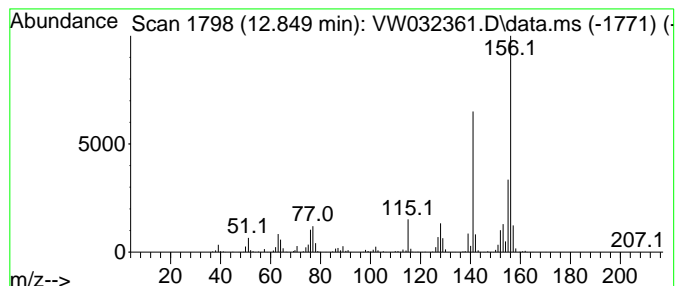
Quant Method : Z:\voasrv\HPCHEM1\MSVOA\_W\Method\82W100125S.M  
 Quant Title : SW846 8260

TIC Library : C:\Database\NIST0.L  
 TIC Integration Parameters: LSCINT.P

\*\*\*\*\*  
 Peak Number 2 Naphthalene, 1,6-dimethyl- Concentration Rank 5

R.T.	EstConc	Area	Relative to ISTD	R.T.
12.849	34.18 ug/l	1029190	1,4-Dichlorobenzene-d4	13.556

Hit#	of	Tentative ID	MW	MolForm	CAS#	Qual
1	5	Naphthalene, 1,6-dimethyl-	156	C12H12	000575-43-9	98
2		Naphthalene, 2,6-dimethyl-	156	C12H12	000581-42-0	98
3		Naphthalene, 1,7-dimethyl-	156	C12H12	000575-37-1	98
4		Naphthalene, 1,5-dimethyl-	156	C12H12	000571-61-9	97
5		Naphthalene, 2,7-dimethyl-	156	C12H12	000582-16-1	97



Data Path : Z:\voasrv\HPCHEM1\MSVOA\_W\Data\VW100625\  
 Data File : VW032361.D  
 Acq On : 06 Oct 2025 15:54  
 Operator : SY/MD  
 Sample : Q3289-05  
 Misc : 4.80g/5mL/MSVOA\_W/SOIL/A  
 ALS Vial : 14 Sample Multiplier: 1

Instrument :  
 MSVOA\_W  
 ClientSampleId :  
 72-11966

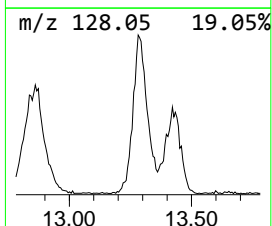
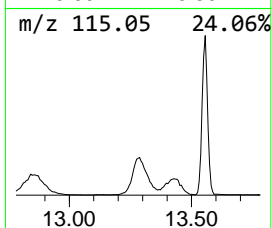
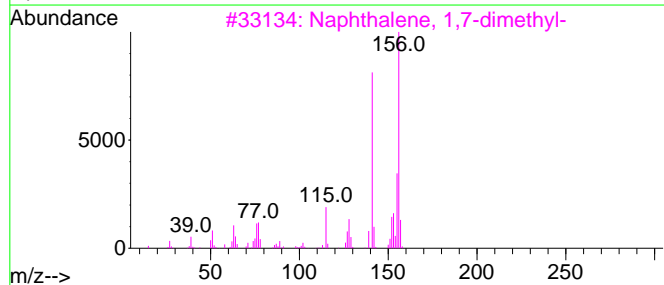
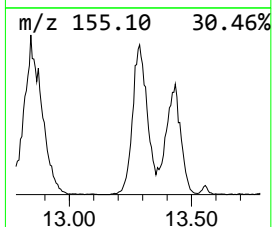
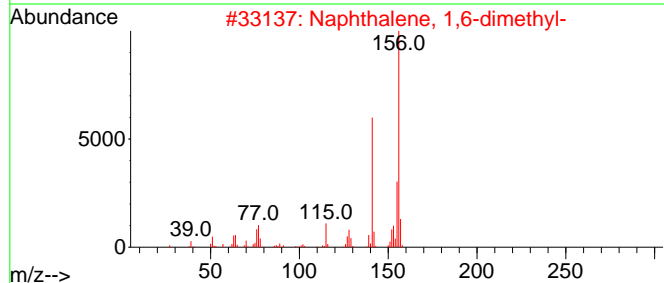
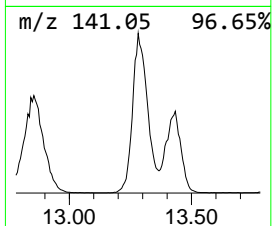
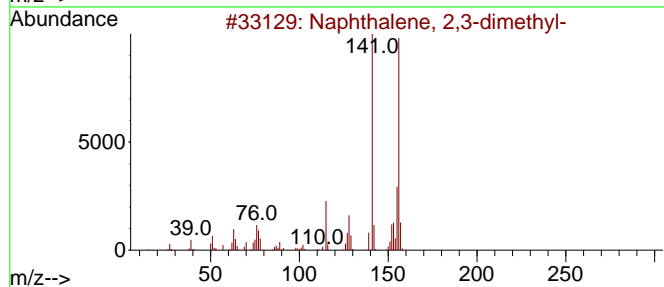
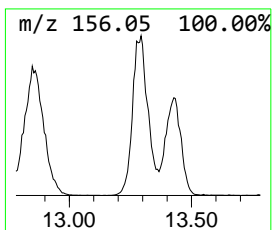
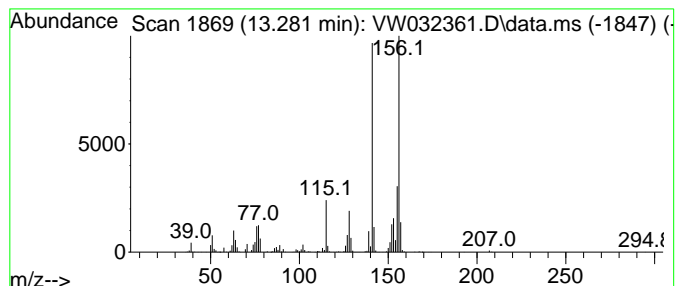
Quant Method : Z:\voasrv\HPCHEM1\MSVOA\_W\Method\82W100125S.M  
 Quant Title : SW846 8260

TIC Library : C:\Database\NIST0.L  
 TIC Integration Parameters: LSCINT.P

\*\*\*\*\*  
 Peak Number 3 Naphthalene, 2,3-dimethyl- Concentration Rank 2

R.T.	EstConc	Area	Relative to ISTD	R.T.
13.281	66.96 ug/l	2016080	1,4-Dichlorobenzene-d4	13.556

Hit#	of	5	Tentative ID	MW	MolForm	CAS#	Qual
1			Naphthalene, 2,3-dimethyl-	156	C12H12	000581-40-8	98
2			Naphthalene, 1,6-dimethyl-	156	C12H12	000575-43-9	97
3			Naphthalene, 1,7-dimethyl-	156	C12H12	000575-37-1	97
4			Naphthalene, 1,3-dimethyl-	156	C12H12	000575-41-7	97
5			Naphthalene, 1,4-dimethyl-	156	C12H12	000571-58-4	96



Data Path : Z:\voasrv\HPCHEM1\MSVOA\_W\Data\VW100625\  
 Data File : VW032361.D  
 Acq On : 06 Oct 2025 15:54  
 Operator : SY/MD  
 Sample : Q3289-05  
 Misc : 4.80g/5mL/MSVOA\_W/SOIL/A  
 ALS Vial : 14 Sample Multiplier: 1

Instrument :  
 MSVOA\_W  
 ClientSampleId :  
 72-11966

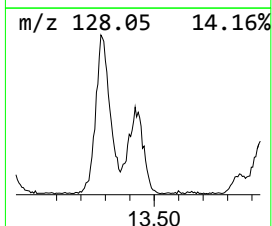
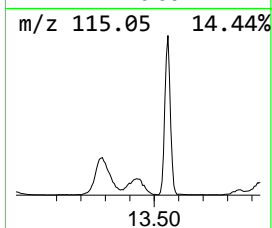
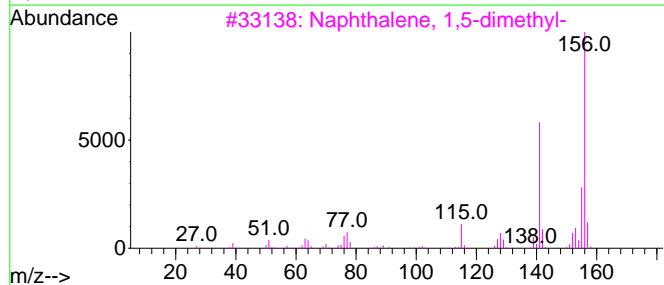
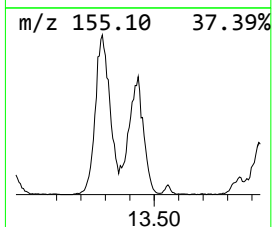
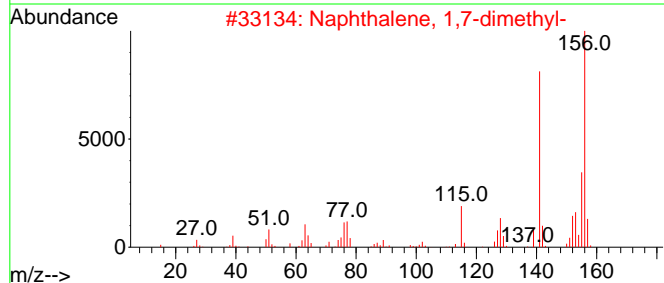
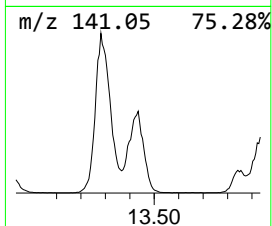
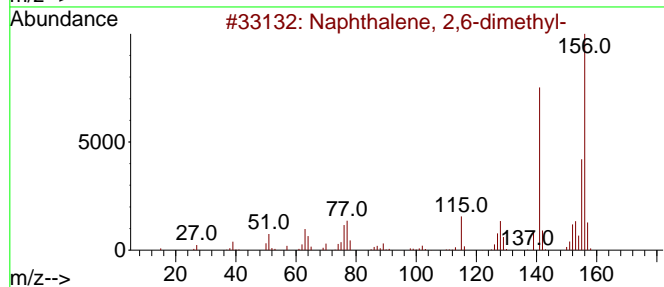
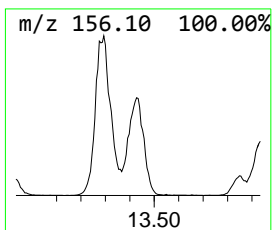
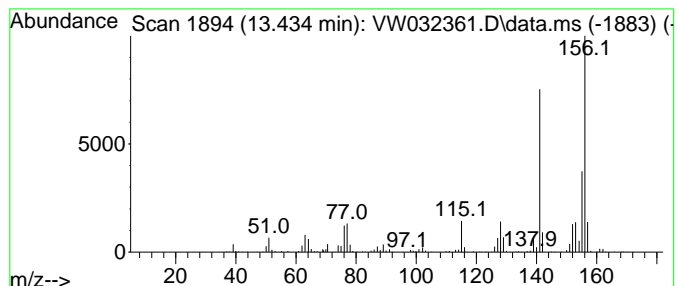
Quant Method : Z:\voasrv\HPCHEM1\MSVOA\_W\Method\82W100125S.M  
 Quant Title : SW846 8260

TIC Library : C:\Database\NIST0.L  
 TIC Integration Parameters: LSCINT.P

\*\*\*\*\*  
 Peak Number 4 Naphthalene, 2,6-dimethyl- Concentration Rank 4

R.T.	EstConc	Area	Relative to ISTD	R.T.
13.434	38.04 ug/l	1145240	1,4-Dichlorobenzene-d4	13.556

Hit#	of	5	Tentative ID	MW	MolForm	CAS#	Qual
1			Naphthalene, 2,6-dimethyl-	156	C12H12	000581-42-0	98
2			Naphthalene, 1,7-dimethyl-	156	C12H12	000575-37-1	98
3			Naphthalene, 1,5-dimethyl-	156	C12H12	000571-61-9	97
4			Naphthalene, 1,6-dimethyl-	156	C12H12	000575-43-9	97
5			Naphthalene, 2,3-dimethyl-	156	C12H12	000581-40-8	97



Data Path : Z:\voasrv\HPCHEM1\MSVOA\_W\Data\VW100625\  
 Data File : VW032361.D  
 Acq On : 06 Oct 2025 15:54  
 Operator : SY/MD  
 Sample : Q3289-05  
 Misc : 4.80g/5mL/MSVOA\_W/SOIL/A  
 ALS Vial : 14 Sample Multiplier: 1

Instrument :  
 MSVOA\_W  
 ClientSampleId :  
 72-11966

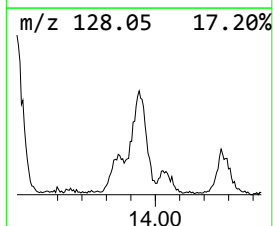
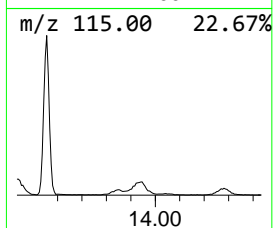
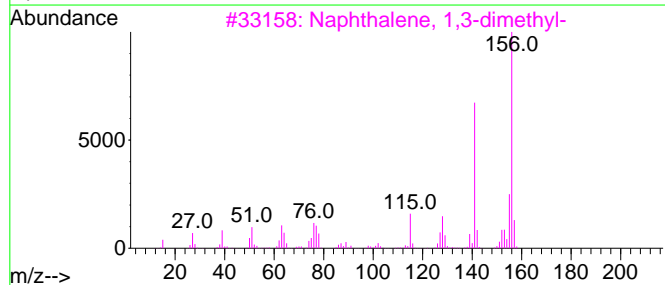
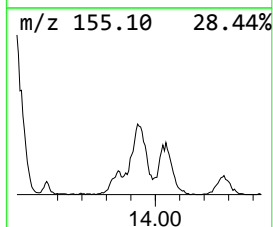
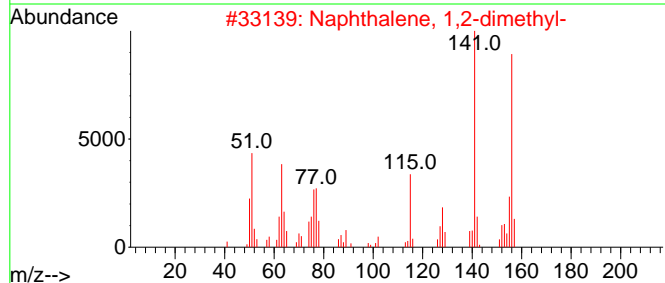
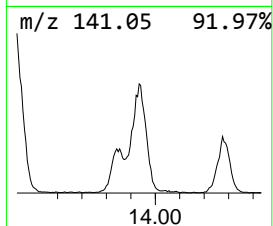
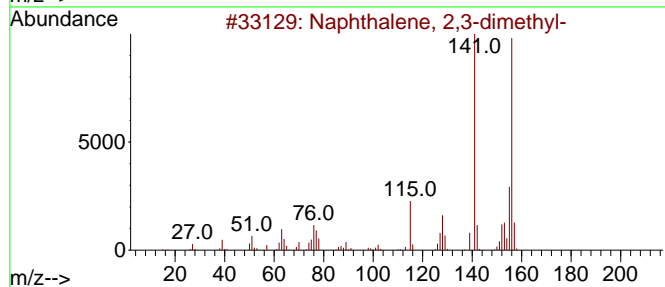
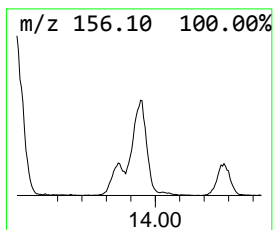
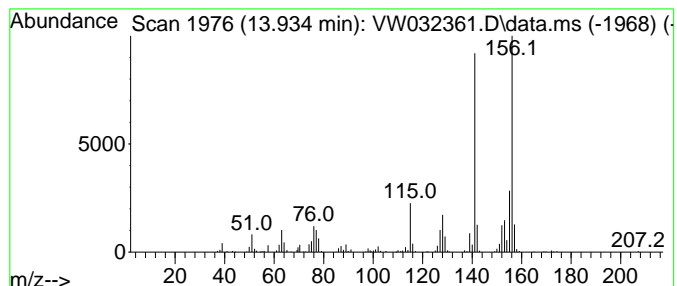
Quant Method : Z:\voasrv\HPCHEM1\MSVOA\_W\Method\82W100125S.M  
 Quant Title : SW846 8260

TIC Library : C:\Database\NIST20.L  
 TIC Integration Parameters: LSCINT.P

\*\*\*\*\*  
 Peak Number 5 Naphthalene, 1,2-dimethyl- Concentration Rank 8

R.T.	EstConc	Area	Relative to ISTD	R.T.
13.934	20.42 ug/l	614892	1,4-Dichlorobenzene-d4	13.556

Hit#	of	5	Tentative ID	MW	MolForm	CAS#	Qual
1			Naphthalene, 2,3-dimethyl-	156	C12H12	000581-40-8	98
2			Naphthalene, 1,2-dimethyl-	156	C12H12	000573-98-8	97
3			Naphthalene, 1,3-dimethyl-	156	C12H12	000575-41-7	97
4			Naphthalene, 1,7-dimethyl-	156	C12H12	000575-37-1	96
5			Naphthalene, 1,6-dimethyl-	156	C12H12	000575-43-9	96



Data Path : Z:\voasrv\HPCHEM1\MSVOA\_W\Data\VW100625\  
 Data File : VW032361.D  
 Acq On : 06 Oct 2025 15:54  
 Operator : SY/MD  
 Sample : Q3289-05  
 Misc : 4.80g/5mL/MSVOA\_W/SOIL/A  
 ALS Vial : 14 Sample Multiplier: 1

Instrument :  
 MSVOA\_W  
 ClientSampleId :  
 72-11966

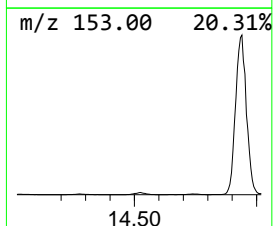
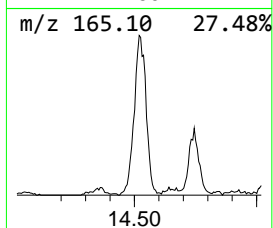
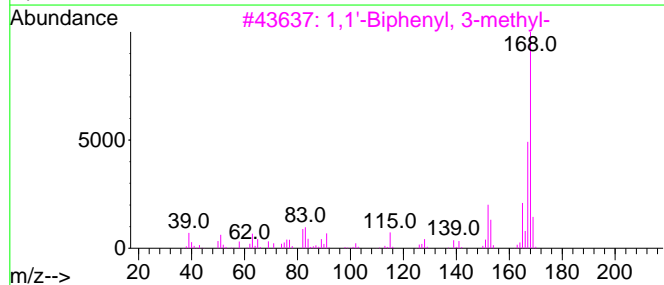
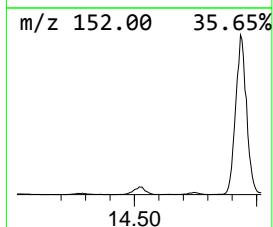
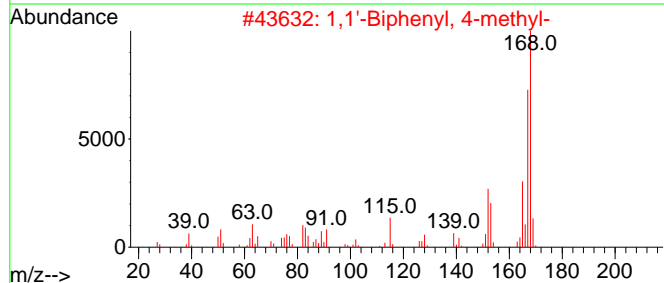
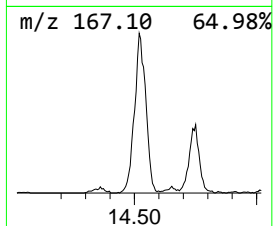
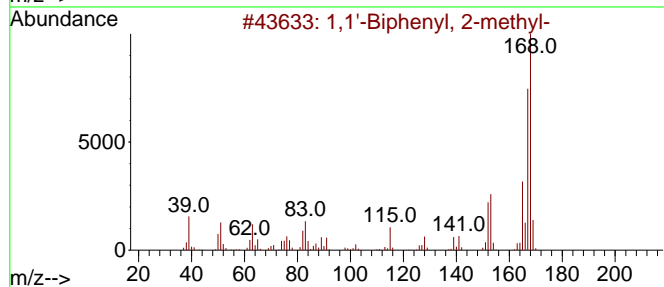
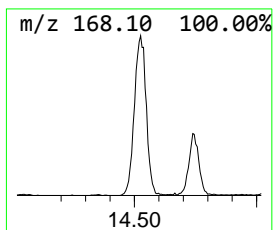
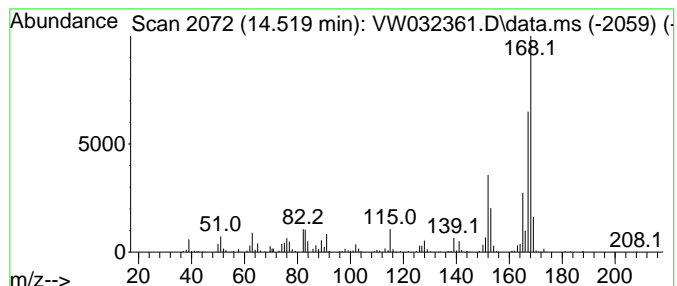
Quant Method : Z:\voasrv\HPCHEM1\MSVOA\_W\Method\82W100125S.M  
 Quant Title : SW846 8260

TIC Library : C:\Database\NIST20.L  
 TIC Integration Parameters: LSCINT.P

\*\*\*\*\*  
 Peak Number 6 1,1'-Biphenyl, 2-methyl- Concentration Rank 9

R.T.	EstConc	Area	Relative to ISTD	R.T.
14.519	16.69 ug/l	502401	1,4-Dichlorobenzene-d4	13.556

Hit#	of 5	Tentative ID	MW	MolForm	CAS#	Qual
1		1,1'-Biphenyl, 2-methyl-	168	C13H12	000643-58-3	96
2		1,1'-Biphenyl, 4-methyl-	168	C13H12	000644-08-6	95
3		1,1'-Biphenyl, 3-methyl-	168	C13H12	000643-93-6	93
4		Diphenylmethane	168	C13H12	000101-81-5	93
5		1,1-Diphenyl-2-propanol	212	C15H16O	029338-49-6	83





Data Path : Z:\voasrv\HPCHEM1\MSVOA\_W\Data\VW100625\  
 Data File : VW032361.D  
 Acq On : 06 Oct 2025 15:54  
 Operator : SY/MD  
 Sample : Q3289-05  
 Misc : 4.80g/5mL/MSVOA\_W/SOIL/A  
 ALS Vial : 14 Sample Multiplier: 1

Instrument :  
 MSVOA\_W  
 ClientSampleId :  
 72-11966

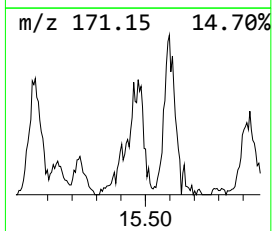
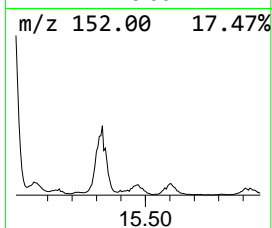
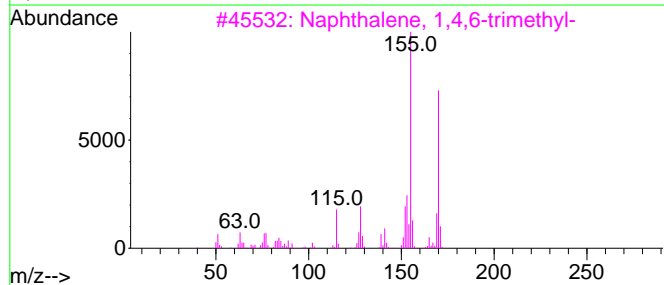
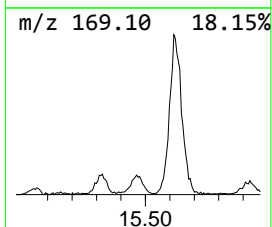
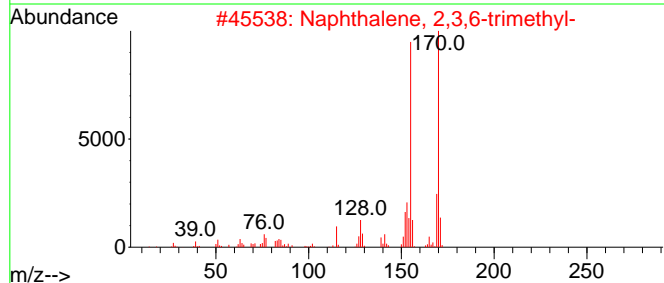
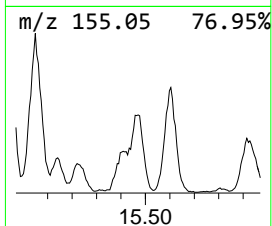
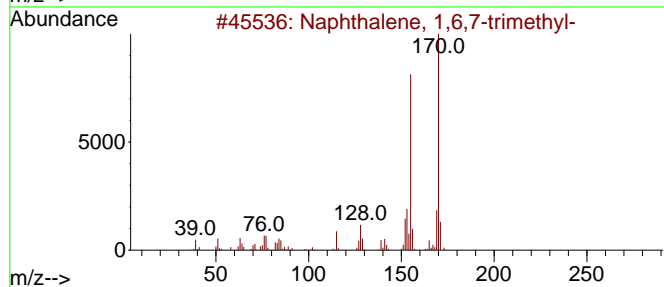
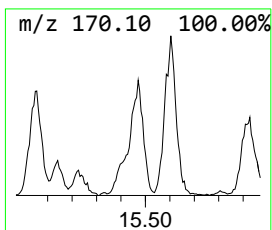
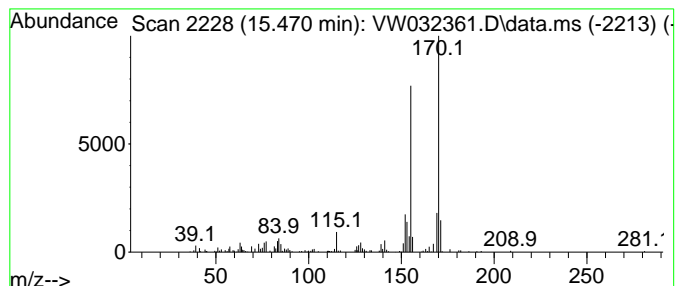
Quant Method : Z:\voasrv\HPCHEM1\MSVOA\_W\Method\82W100125S.M  
 Quant Title : SW846 8260

TIC Library : C:\Database\NIST20.L  
 TIC Integration Parameters: LSCINT.P

\*\*\*\*\*  
 Peak Number 9 Naphthalene, 1,6,7-trimethyl- Concentration Rank 10

R.T.	EstConc	Area	Relative to ISTD	R.T.
15.470	13.47 ug/l	405635	1,4-Dichlorobenzene-d4	13.556

Hit#	of	5	Tentative ID	MW	MolForm	CAS#	Qual
1			Naphthalene, 1,6,7-trimethyl-	170	C13H14	002245-38-7	94
2			Naphthalene, 2,3,6-trimethyl-	170	C13H14	000829-26-5	91
3			Naphthalene, 1,4,6-trimethyl-	170	C13H14	002131-42-2	86
4			Naphthalene, 1,4,5-trimethyl-	170	C13H14	002131-41-1	80
5			3,4-Dimethoxythiophenol	170	C8H10O2S	000700-96-9	80



Data Path : Z:\voasrv\HPCHEM1\MSVOA\_W\Data\VW100625\  
Data File : VW032361.D  
Acq On : 06 Oct 2025 15:54  
Operator : SY/MD  
Sample : Q3289-05  
Misc : 4.80g/5mL/MSVOA\_W/SOIL/A  
ALS Vial : 14 Sample Multiplier: 1

Instrument :  
MSVOA\_W  
ClientSampleId :  
72-11966

Quant Method : Z:\voasrv\HPCHEM1\MSVOA\_W\Method\82W100125S.M  
Quant Title : SW846 8260

TIC Library : C:\Database\NIST0.L  
TIC Integration Parameters: LSCINT.P

TIC Top Hit name	RT	EstConc	Units	Response	--Internal Standard--			
					#	RT	Resp	Conc
Naphthalene, 1-...	12.398	25.3	ug/l	701274	3	11.629	1385960	50.0
Naphthalene, 1,...	12.849	34.2	ug/l	1029190	4	13.556	1505400	50.0
Naphthalene, 2,...	13.281	67.0	ug/l	2016080	4	13.556	1505400	50.0
Naphthalene, 2,...	13.434	38.0	ug/l	1145240	4	13.556	1505400	50.0
Naphthalene, 1,...	13.934	20.4	ug/l	614892	4	13.556	1505400	50.0
1,1'-Biphenyl, ...	14.519	16.7	ug/l	502401	4	13.556	1505400	50.0
Naphthalene, 1,...	15.470	13.5	ug/l	405635	4	13.556	1505400	50.0