

Data Path : Z:\voasrv\HPCHEM1\MSVOA_W\Data\VW101022\
 Data File : VW024812.D
 Acq On : 10 Oct 2022 17:20
 Operator : SY/VA
 Sample : N5049-16
 Misc : 5.80g/10mL/MSVOA_W/SOIL
 ALS Vial : 1 Sample Multiplier: 1

Instrument :
 MSVOA_W
 ClientSampleId :
 COBS4

Quant Time: Oct 11 01:59:22 2022
 Quant Method : Z:\voasrv\HPCHEM1\MSVOA_W\Method\SFAMWLM092622SMA.M
 Quant Title : SFAM01.0
 QLast Update : Fri Oct 07 03:04:02 2022
 Response via : Initial Calibration

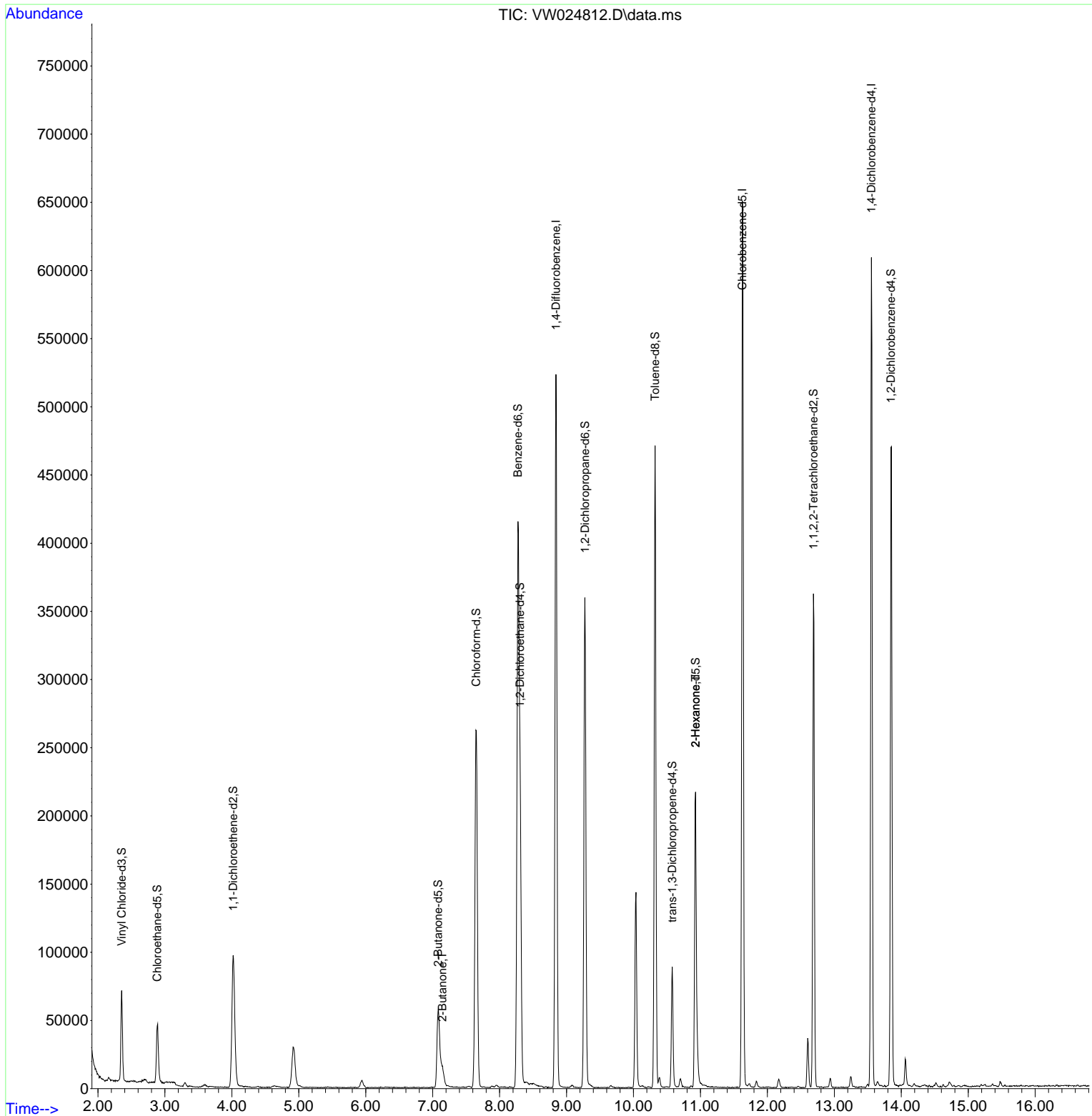
Compound	R.T.	QIon	Response	Conc	Units	Dev(Min)
Internal Standards						
1) 1,4-Difluorobenzene	8.841	114	436687	25.000	ug/L	0.00
28) Chlorobenzene-d5	11.628	117	362731	25.000	ug/L	0.00
58) 1,4-Dichlorobenzene-d4	13.554	152	149309	25.000	ug/L	0.00
System Monitoring Compounds						
4) Vinyl Chloride-d3	2.355	65	64780	14.178	ug/L	0.00
Spiked Amount	25.000	Range 30 - 150	Recovery =	56.720%		
7) Chloroethane-d5	2.885	69	48460	18.252	ug/L	0.00
Spiked Amount	25.000	Range 30 - 150	Recovery =	73.000%		
11) 1,1-Dichloroethene-d2	4.019	63	96282	9.105	ug/L	0.00
Spiked Amount	25.000	Range 45 - 110	Recovery =	36.400%#		
21) 2-Butanone-d5	7.080	46	99631	60.653	ug/L	0.00
Spiked Amount	50.000	Range 20 - 135	Recovery =	121.300%		
24) Chloroform-d	7.653	84	279808	23.968	ug/L	0.00
Spiked Amount	25.000	Range 40 - 150	Recovery =	95.880%		
26) 1,2-Dichloroethane-d4	8.305	65	155443	25.667	ug/L	0.00
Spiked Amount	25.000	Range 70 - 130	Recovery =	102.680%		
32) Benzene-d6	8.274	84	431247	18.601	ug/L	0.00
Spiked Amount	25.000	Range 20 - 135	Recovery =	74.400%		
36) 1,2-Dichloropropane-d6	9.274	67	176390	24.901	ug/L	0.00
Spiked Amount	25.000	Range 70 - 120	Recovery =	99.600%		
41) Toluene-d8	10.323	98	306015	14.768	ug/L	0.00
Spiked Amount	25.000	Range 30 - 130	Recovery =	59.080%		
43) trans-1,3-Dichloroprop...	10.579	79	48952	15.518	ug/L	0.00
Spiked Amount	25.000	Range 30 - 135	Recovery =	62.080%		
47) 2-Hexanone-d5	10.926	63	76171	62.847	ug/L	0.00
Spiked Amount	50.000	Range 20 - 135	Recovery =	125.700%		
56) 1,1,2,2-Tetrachloroeth...	12.688	84	189278	37.501	ug/L	0.00
Spiked Amount	25.000	Range 45 - 120	Recovery =	150.000%#		
66) 1,2-Dichlorobenzene-d4	13.847	152	119916	22.824	ug/L	0.00
Spiked Amount	25.000	Range 75 - 120	Recovery =	91.280%		
Target Compounds						
22) 2-Butanone	7.147	43	18286	9.539	ug/L #	48
48) 2-Hexanone	10.926	43	9741	3.883	ug/L #	69

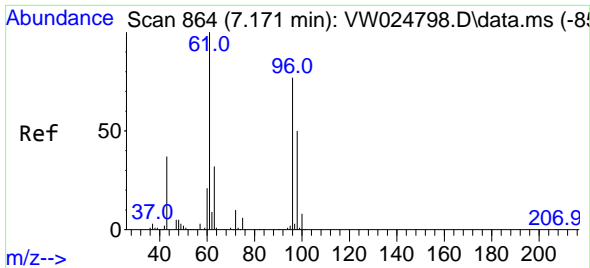
(#) = qualifier out of range (m) = manual integration (+) = signals summed

Data Path : Z:\voasrv\HPCHEM1\MSVOA_W\Data\VW101022\
 Data File : VW024812.D
 Acq On : 10 Oct 2022 17:20
 Operator : SY/VA
 Sample : N5049-16
 Misc : 5.80g/10mL/MSVOA_W/SOIL
 ALS Vial : 1 Sample Multiplier: 1

Instrument :
 MSVOA_W
 ClientSampleId :
 C0BS4

Quant Time: Oct 11 01:59:22 2022
 Quant Method : Z:\voasrv\HPCHEM1\MSVOA_W\Method\SFAMWLM092622SMA.M
 Quant Title : SFAM01.0
 QLast Update : Fri Oct 07 03:04:02 2022
 Response via : Initial Calibration



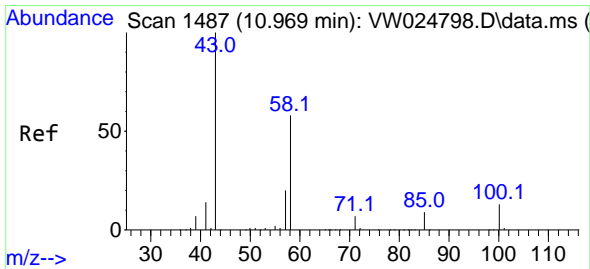
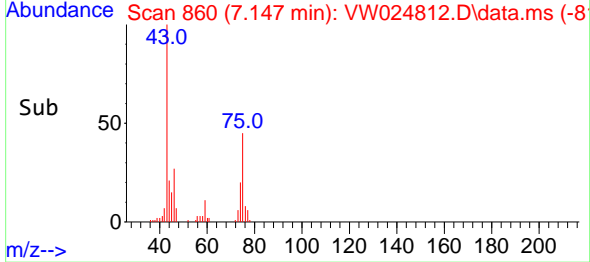
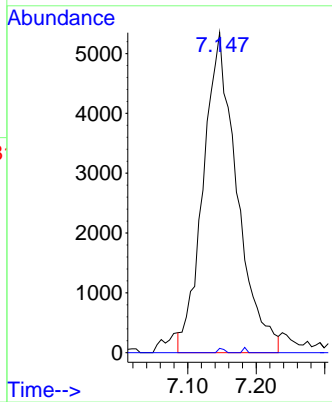
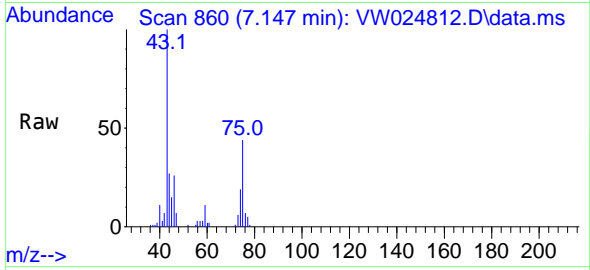


#22
 2-Butanone
 Concen: 9.539 ug/L
 RT: 7.147 min Scan# 80
 Delta R.T. -0.025 min
 Lab File: VW024812.D
 Acq: 10 Oct 2022 17:20

Instrument : MSVOA_W
 ClientSampleId : C0BS4

Tgt Ion: 43 Resp: 18286

Ion	Ratio	Lower	Upper
43	100		
72	0.3	13.8	41.3#



#48
 2-Hexanone
 Concen: 3.883 ug/L
 RT: 10.926 min Scan# 1480
 Delta R.T. -0.037 min
 Lab File: VW024812.D
 Acq: 10 Oct 2022 17:20

Tgt Ion: 43 Resp: 9741

Ion	Ratio	Lower	Upper
43	100		
58	29.7	45.3	67.9#
57	27.4	16.3	24.5#
100	0.5	10.4	15.6#

