

Data Path : Z:\VOASRV\HPCHEM1\MSVOA W\DATA\VW101119\
 Data File : VW013534.D
 Acq On : 11 Oct 2019 12:58
 Operator : SY/VA
 Sample : K5267-12
 Misc : 5.00G/10ML/MSVOA W/SOIL
 ALS Vial : 4 Sample Multiplier: 1

Instrument :
 MSVOA_W
 ClientSampled :
 DBAQ5

Quant Time: Oct 11 22:42:59 2019
 Quant Method : Z:\VOASRV\HPCHEM1\MSVOA_W\METHOD\SOM2WLM101019S.M
 Quant Title : VOC Analysis
 QLast Update : Fri Oct 11 22:30:37 2019
 Response via : Initial Calibration

Internal Standards	R.T.	QIon	Response	Conc	Units	Dev(Min)
1) 1,4-Difluorobenzene	8.84	114	441775	25.00	ug/L	0.00
28) Chlorobenzene-d5	11.63	117	383434	25.00	ug/L	0.00
60) 1,4-Dichlorobenzene-d4	13.56	152	189487	25.00	ug/L	0.00

System Monitoring Compounds

4) Vinyl Chloride-d3	2.35	65	118877	23.51	ug/L	0.00
Spiked Amount	25.000	Range	30 - 150	Recovery	=	94.04%
7) Chloroethane-d5	2.89	69	85861	22.12	ug/L	0.00
Spiked Amount	25.000	Range	30 - 150	Recovery	=	88.48%
10) 1,1-Dichloroethene-d2	4.02	63	241105	22.98	ug/L	0.00
Spiked Amount	25.000	Range	45 - 110	Recovery	=	91.92%
20) 2-Butanone-d5	7.08	46	89977	59.08	ug/L	0.00
Spiked Amount	50.000	Range	20 - 135	Recovery	=	118.16%
24) Chloroform-d	7.65	84	210211	21.91	ug/L	0.00
Spiked Amount	25.000	Range	40 - 150	Recovery	=	87.64%
26) 1,2-Dichloroethane-d4	8.31	65	118145	23.76	ug/L	0.00
Spiked Amount	25.000	Range	70 - 130	Recovery	=	95.04%
29) Benzene-d6	8.27	84	484392	23.58	ug/L	0.00
Spiked Amount	25.000	Range	20 - 135	Recovery	=	94.32%
33) 1,2-Dichloropropane-d6	9.27	67	138865	22.79	ug/L	0.00
Spiked Amount	25.000	Range	70 - 120	Recovery	=	91.16%
37) Toluene-d8	10.32	98	445023	22.83	ug/L	0.00
Spiked Amount	25.000	Range	30 - 130	Recovery	=	91.32%
38) trans-1,3-Dichloropropene-	10.58	79	62952	23.19	ug/L	0.00
Spiked Amount	25.000	Range	30 - 135	Recovery	=	92.76%
39) 2-Hexanone-d5	10.92	63	68468	56.17	ug/L	0.00
Spiked Amount	50.000	Range	20 - 135	Recovery	=	112.34%
48) 1,1,2,2-Tetrachloroethane-	12.69	84	121413	24.85	ug/L	0.00
Spiked Amount	25.000	Range	45 - 120	Recovery	=	99.40%
61) 1,2-Dichlorobenzene-d4	13.85	152	158470	23.27	ug/L	0.00
Spiked Amount	25.000	Range	75 - 120	Recovery	=	93.08%

Target Compounds

Target Compounds	R.T.	QIon	Response	Conc	Units	Ovalue
3) Chloromethane	2.21	50	85148	20.131	ug/L	95
6) Bromomethane	2.78	94	33331	9.094	ug/L	100
9) Trichlorofluoromethane	3.26	101	50930	16.326	ug/L	99
12) 1,1-Dichloroethene	4.03	96	119704	21.585	ug/L	91
13) Acetone	4.13	43	120175	68.655	ug/L	99
15) Methyl Acetate	4.67	43	125125	45.825	ug/L	99
16) Methylene chloride	4.92	84	63462	9.484	ug/L	96
17) Methyl tert-butyl Ether	5.42	73	276874	31.069	ug/L	99
18) trans-1,2-Dichloroethene	5.42	96	59213	10.006	ug/L	95
22) cis-1,2-Dichloroethene	7.17	96	153696	24.284	ug/L	98
23) Bromochloromethane	7.51	128	41571	14.669	ug/L	95
27) 1,2-Dichloroethane	8.40	62	61147	9.864	ug/L	97
30) Cyclohexane	7.95	56	96265	9.548	ug/L	98
31) 1,1,1-Trichloroethane	7.87	97	78535	10.169	ug/L	100
32) Carbon tetrachloride	8.07	117	90381	12.201	ug/L	99
35) Trichloroethene	9.09	95	234128	38.748	ug/L	99
36) Methylcyclohexane	9.34	83	265050	24.122	ug/L	100

Data Path : Z:\VOASRV\HPCHEM1\MSVOA W\DATA\VW101119\
 Data File : VW013534.D
 Acq On : 11 Oct 2019 12:58
 Operator : SY/VA
 Sample : K5267-12
 Misc : 5.00G/10ML/MSVOA W/SOIL
 ALS Vial : 4 Sample Multiplier: 1

Instrument :
 MSVOA_W
 ClientSampleId :
 DBAQ5

Quant Time: Oct 11 22:42:59 2019
 Quant Method : Z:\VOASRV\HPCHEM1\MSVOA_W\METHOD\SOM2WLM101019S.M
 Quant Title : VOC Analysis
 QLast Update : Fri Oct 11 22:30:37 2019
 Response via : Initial Calibration

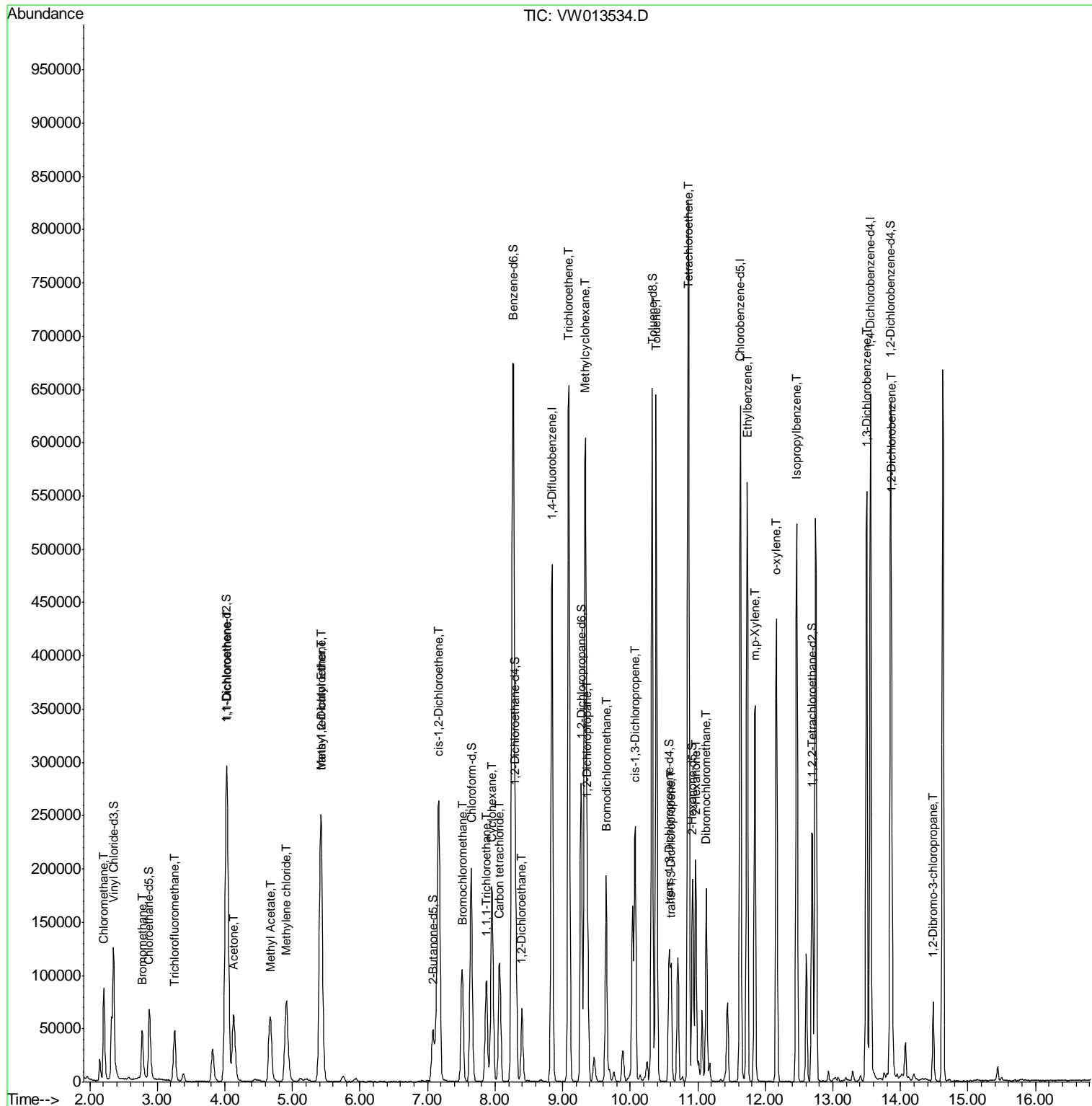
Internal Standards	R.T.	QIon	Response	Conc	Units	Dev(Min)
40) 1,2-Dichloropropane	9.37	63	70657	12.662	ug/L	99
41) Bromodichloromethane	9.65	83	131709	19.216	ug/L	99
42) cis-1,3-Dichloropropene	10.07	75	146867	16.406	ug/L	98
44) Toluene	10.38	91	491415	19.575	ug/L	98
45) trans-1,3-Dichloropropene	10.60	75	58931	8.337	ug/L	100
47) Tetrachloroethene	10.86	164	210032	38.140	ug/L	95
49) 2-Hexanone	10.97	43	136737	48.321	ug/L	99
50) Dibromochloromethane	11.13	129	98266	19.703	ug/L	99
53) Ethylbenzene	11.73	91	403514	14.521	ug/L	100
54) m,p-Xylene	11.85	106	103855	9.581	ug/L	96
55) o-xylene	12.16	106	118345	11.696	ug/L	95
57) Isopropylbenzene	12.46	105	334996	12.204	ug/L	99
63) 1,3-Dichlorobenzene	13.50	146	243941	19.212	ug/L	95
65) 1,2-Dichlorobenzene	13.87	146	111713	9.785	ug/L	98
66) 1,2-Dibromo-3-chloropropan	14.48	75	17340	22.000	ug/L	94

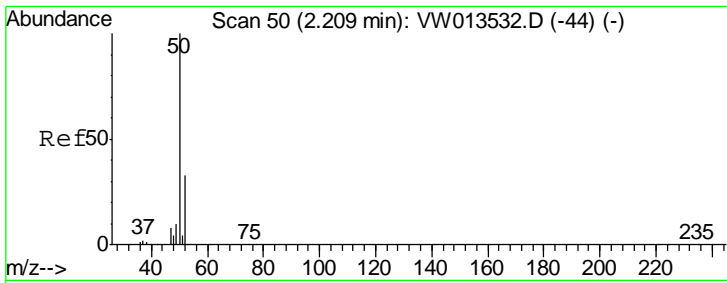
(#) = qualifier out of range (m) = manual integration (+) = signals summed

Data Path : Z:\VOASRV\HPCHEM1\MSVOA W\DATA\VW101119\
 Data File : VW013534.D
 Acq On : 11 Oct 2019 12:58
 Operator : SY/VA
 Sample : K5267-12
 Misc : 5.00G/10ML/MSVOA W/SOIL
 ALS Vial : 4 Sample Multiplier: 1

Instrument :
 MSVOA_W
Client Sampled :
 DBAQ5

Quant Time: Oct 11 22:42:59 2019
 Quant Method : Z:\VOASRV\HPCHEM1\MSVOA_W\METHOD\SOM2WLM101019S.M
 Quant Title : VOC Analysis
 QLast Update : Fri Oct 11 22:30:37 2019
 Response via : Initial Calibration

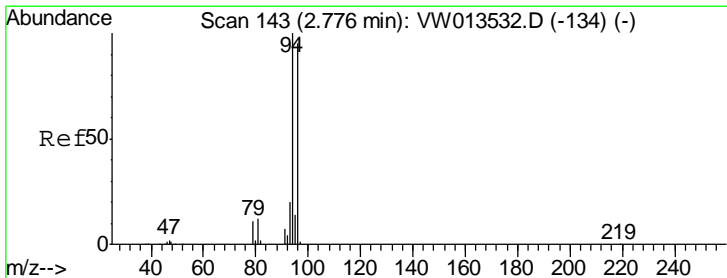
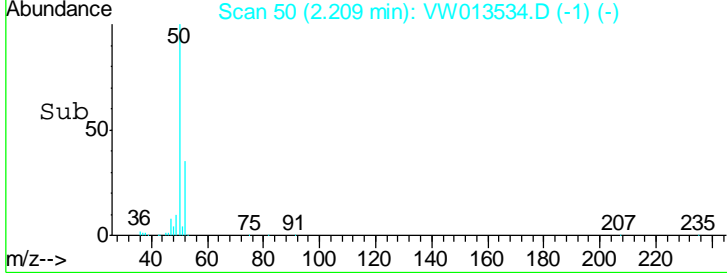
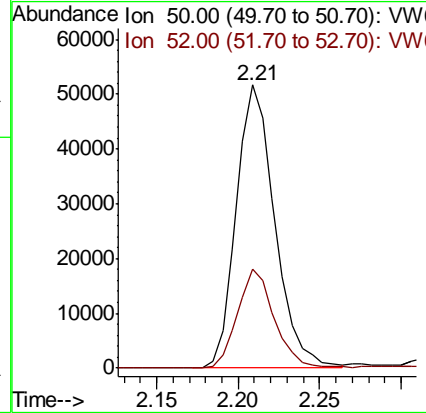
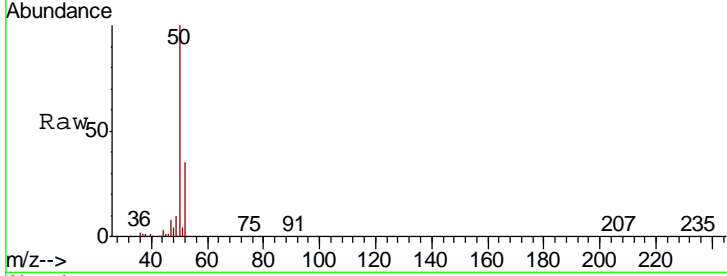




#3
 Chloromethane
 Concen: 20.131 ug/L
 RT: 2.21 min Scan# 50
 Delta R.T. 0.00 min
 Lab File: VW013534.D
 Acq: 11 Oct 2019 12:58

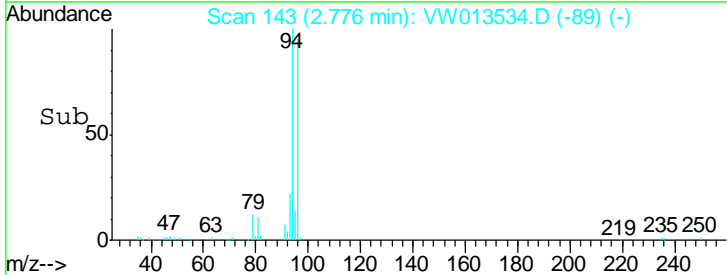
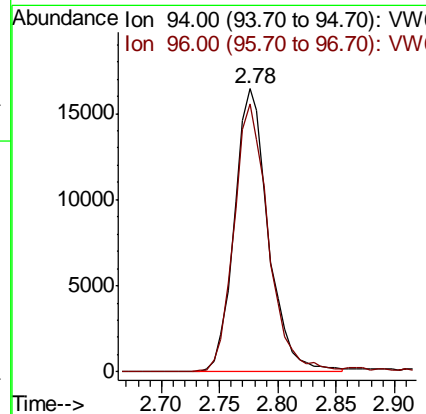
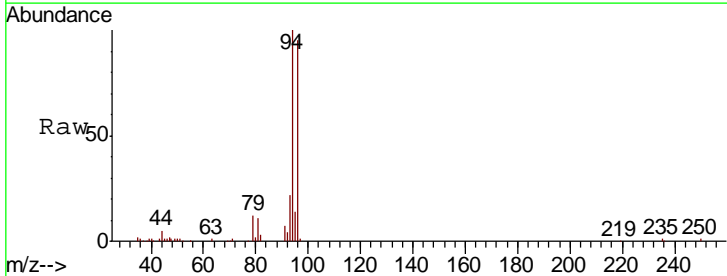
Instrument :
 MSVOA_W
ClientSampled :
 DBAQ5

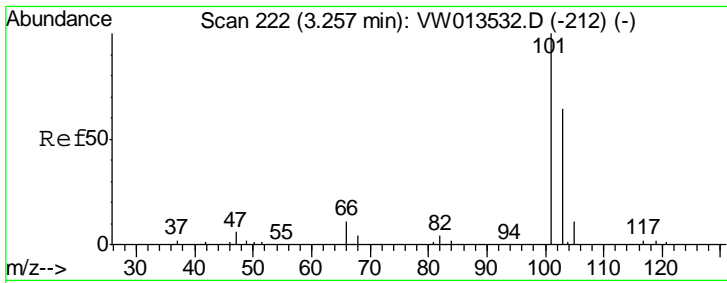
Tgt Ion	Resp	Lower	Upper
50	100		
52	35.1	22.6	42.0



#6
 Bromomethane
 Concen: 9.094 ug/L
 RT: 2.78 min Scan# 143
 Delta R.T. 0.00 min
 Lab File: VW013534.D
 Acq: 11 Oct 2019 12:58

Tgt Ion	Resp	Lower	Upper
94	100		
96	94.4	9.5	179.9

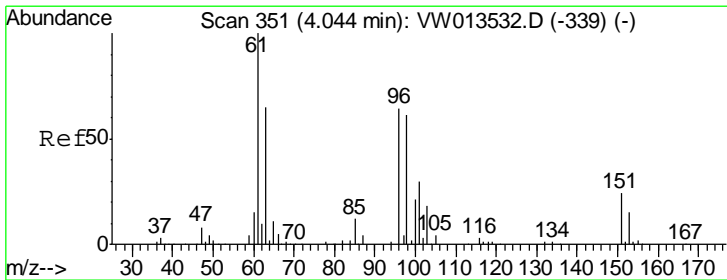
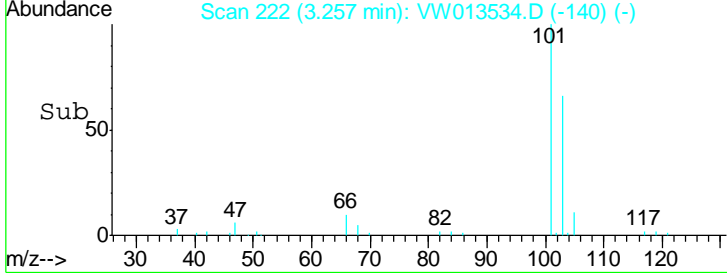
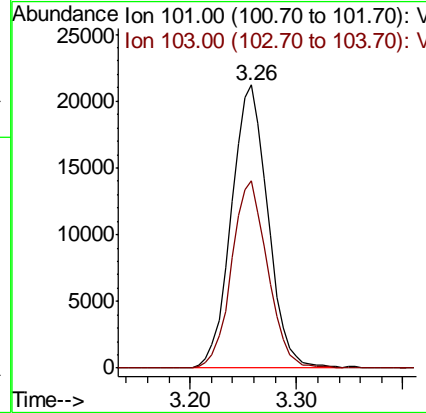
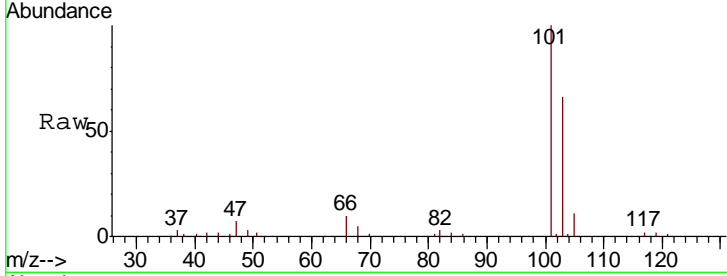




#9
 Trichlorofluoromethane
 Concen: 16.326 ug/L
 RT: 3.26 min Scan# 222
 Delta R.T. 0.00 min
 Lab File: VW013534.D
 Acq: 11 Oct 2019 12:58

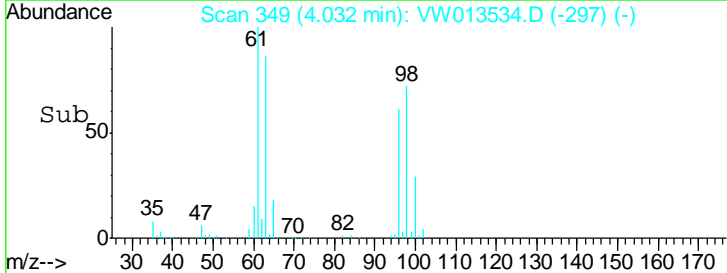
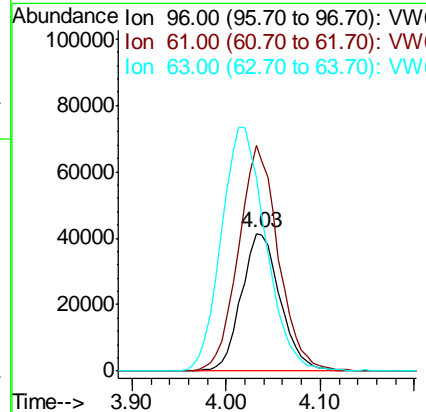
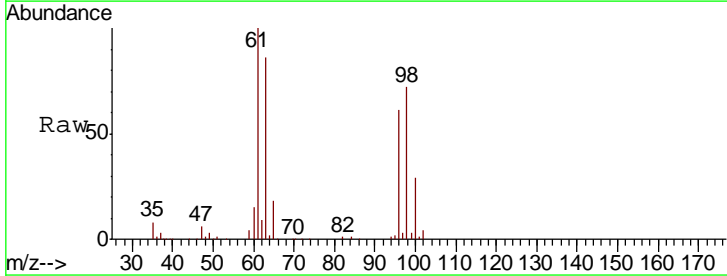
Instrument :
 MSVOA_W
ClientSampled :
 DBAQ5

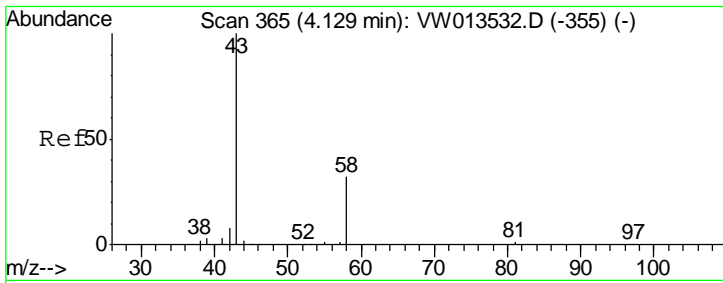
Tgt Ion	Resp	Lower	Upper
101	50930		
103	64.9	46.0	85.4



#12
 1,1-Dichloroethene
 Concen: 21.585 ug/L
 RT: 4.03 min Scan# 349
 Delta R.T. -0.01 min
 Lab File: VW013534.D
 Acq: 11 Oct 2019 12:58

Tgt Ion	Resp	Lower	Upper
96	119704		
61	164.4	111.0	206.2
63	140.7	86.3	160.3

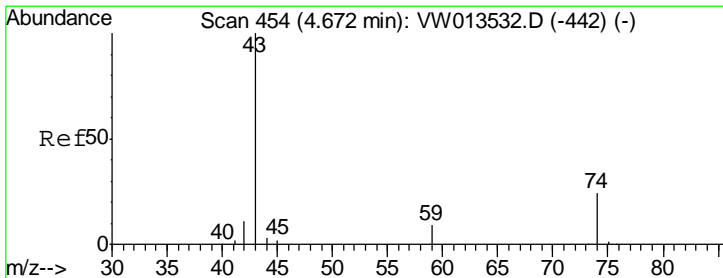
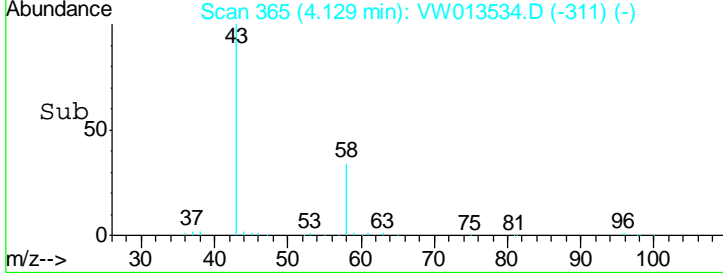
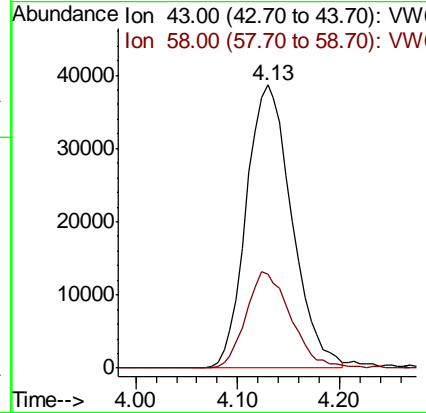
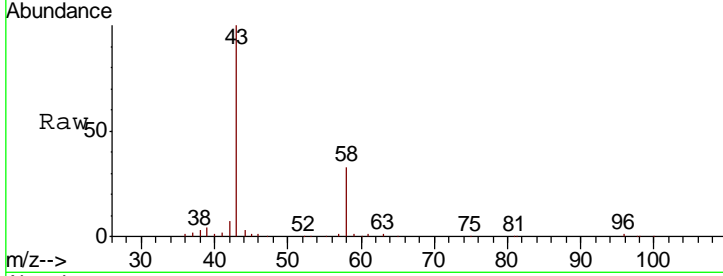




#13
 Acetone
 Concen: 68.655 ug/L
 RT: 4.13 min Scan# 365
 Delta R.T. 0.00 min
 Lab File: VW013534.D
 Acq: 11 Oct 2019 12:58

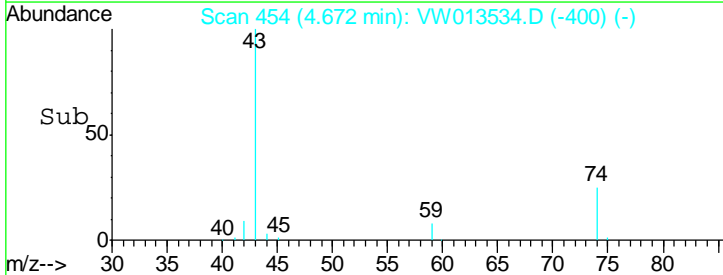
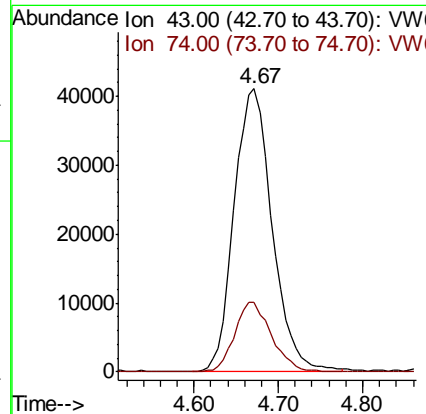
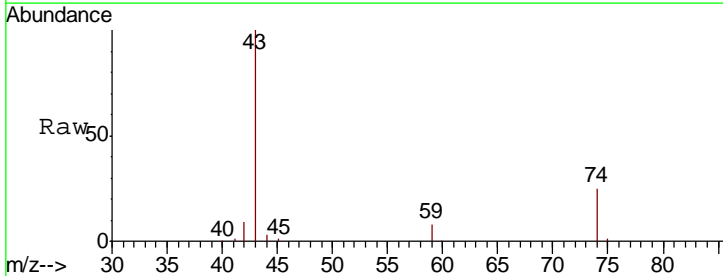
Instrument :
 MSVOA_W
 ClientSampled :
 DBAQ5

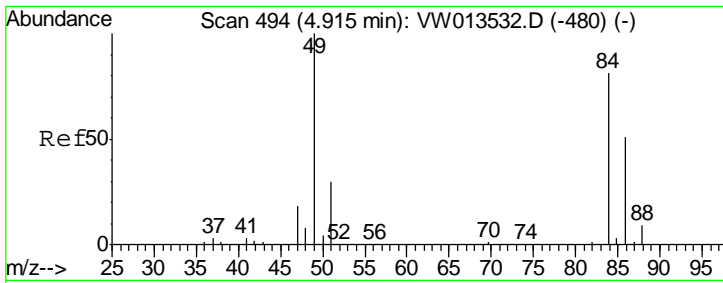
Tgt Ion	Resp	Lower	Upper
43	120175		
58	33.3	0.0	67.8



#15
 Methyl Acetate
 Concen: 45.825 ug/L
 RT: 4.67 min Scan# 454
 Delta R.T. 0.00 min
 Lab File: VW013534.D
 Acq: 11 Oct 2019 12:58

Tgt Ion	Resp	Lower	Upper
43	125125		
74	23.8	18.7	28.1

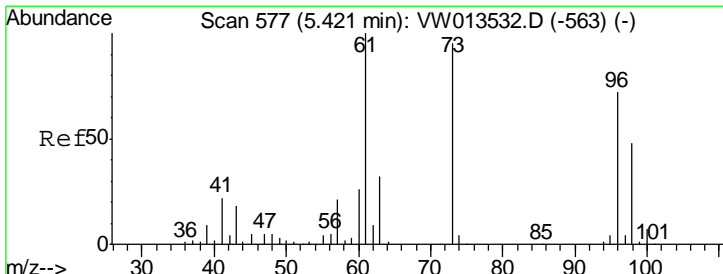
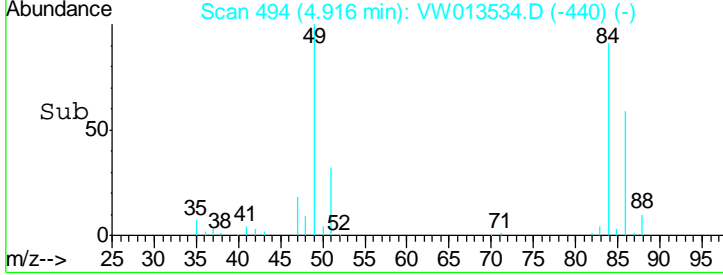
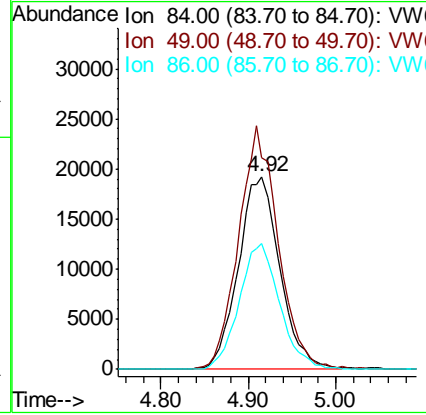
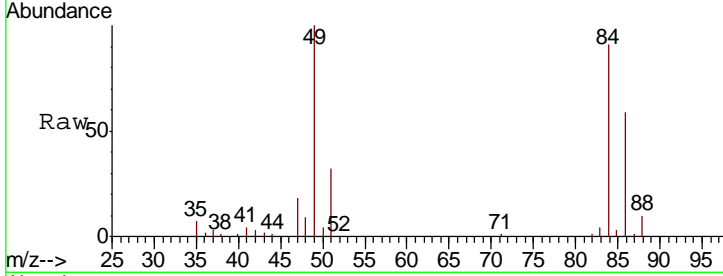




#16
 Methylene chloride
 Concen: 9.484 ug/L
 RT: 4.92 min Scan# 494
 Delta R.T. 0.00 min
 Lab File: VW013534.D
 Acq: 11 Oct 2019 12:58

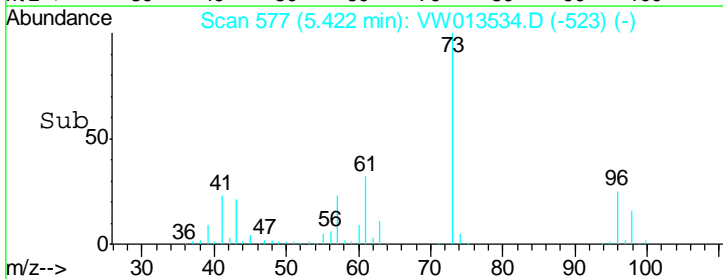
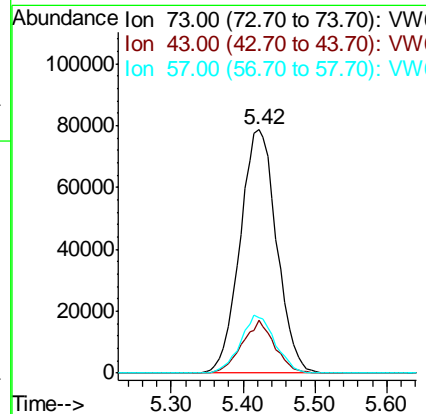
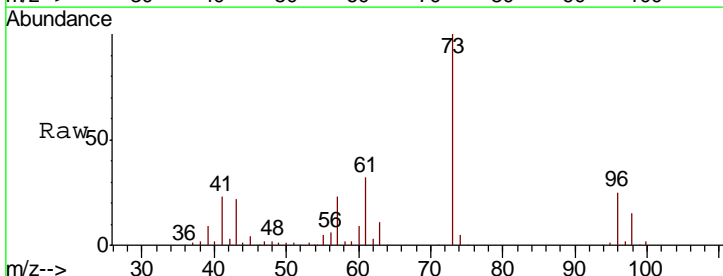
Instrument :
 MSVOA_W
ClientSampled :
 DBAQ5

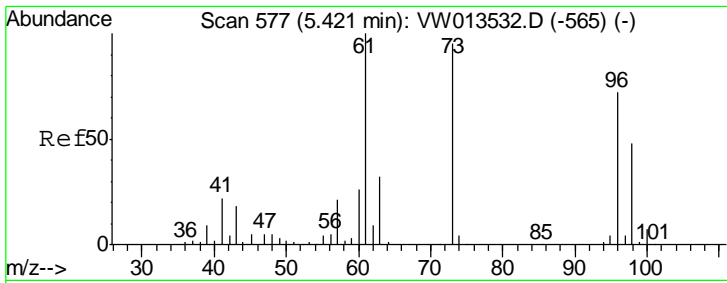
Tgt Ion	Resp	Lower	Upper
84	100		
49	110.1	81.3	151.1
86	65.3	46.3	86.1



#17
 Methyl tert-butyl Ether
 Concen: 31.069 ug/L
 RT: 5.42 min Scan# 577
 Delta R.T. 0.00 min
 Lab File: VW013534.D
 Acq: 11 Oct 2019 12:58

Tgt Ion	Resp	Lower	Upper
73	100		
43	19.3	15.0	22.4
57	22.6	18.1	27.1

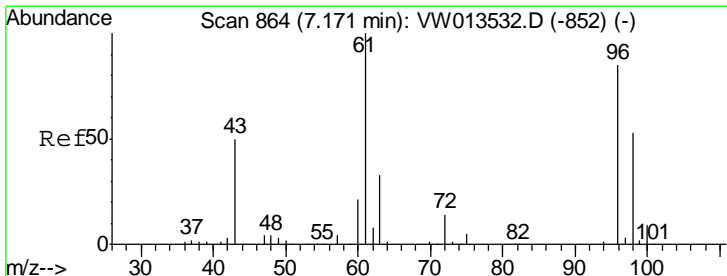
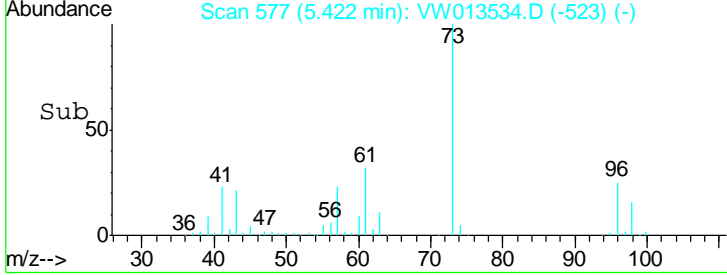
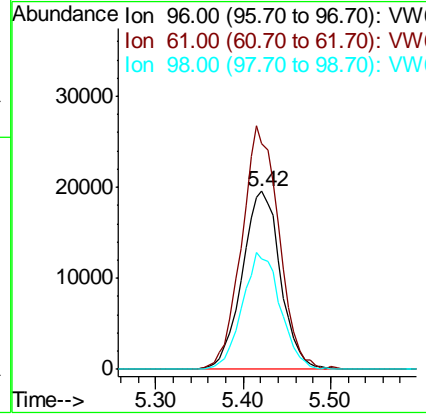
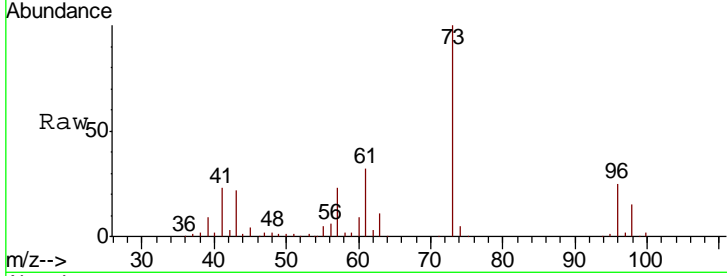




#18
 trans-1,2-Dichloroethene
 Concen: 10.006 ug/L
 RT: 5.42 min Scan# 577
 Delta R.T. 0.00 min
 Lab File: VW013534.D
 Acq: 11 Oct 2019 12:58

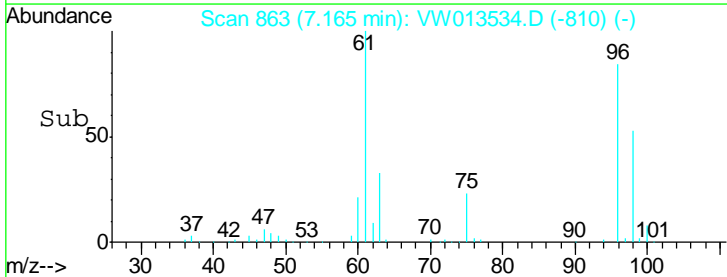
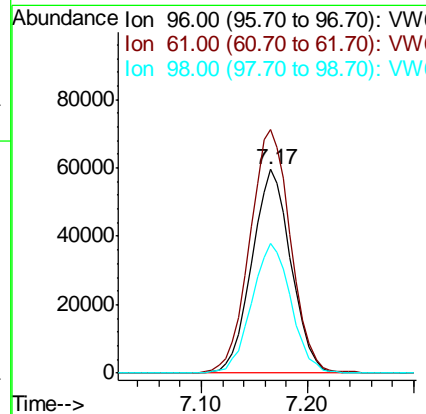
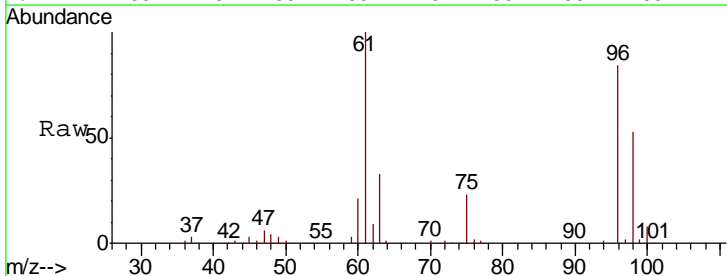
Instrument :
 MSVOA_W
ClientSampled :
 DBAQ5

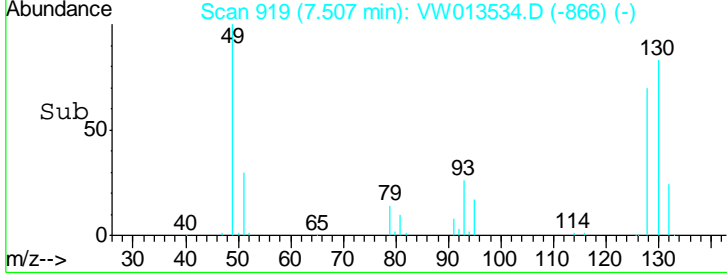
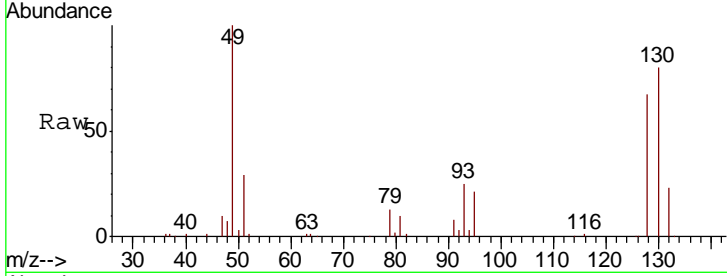
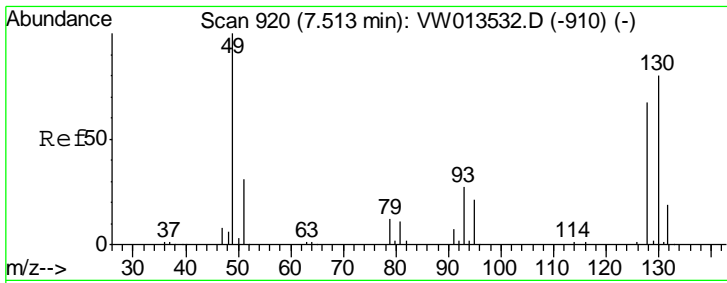
Tgt Ion	Resp	Lower	Upper
96	59213		
Ion Ratio			
96	100		
61	127.0	93.7	173.9
98	62.3	46.1	85.7



#22
 cis-1,2-Dichloroethene
 Concen: 24.284 ug/L
 RT: 7.17 min Scan# 863
 Delta R.T. -0.01 min
 Lab File: VW013534.D
 Acq: 11 Oct 2019 12:58

Tgt Ion	Resp	Lower	Upper
96	153696		
Ion Ratio			
96	100		
61	119.4	86.0	159.8
98	63.4	44.4	82.5

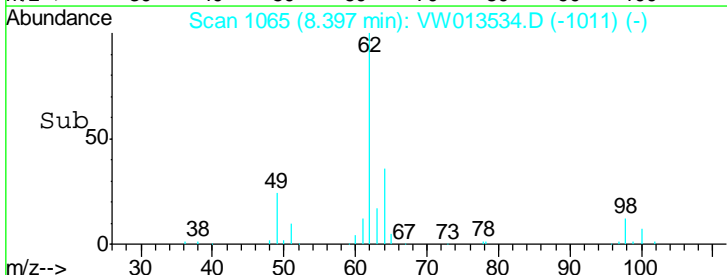
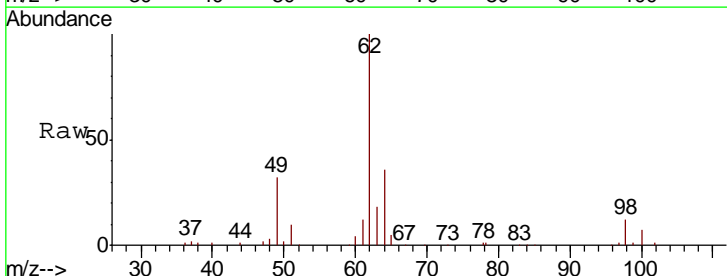
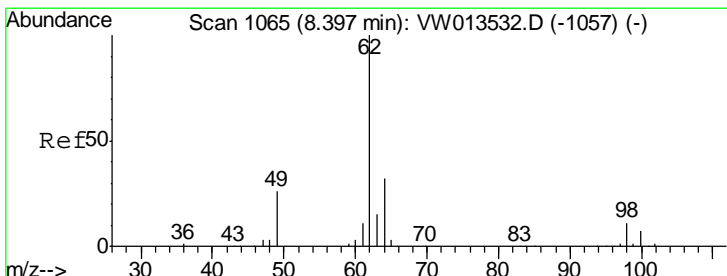
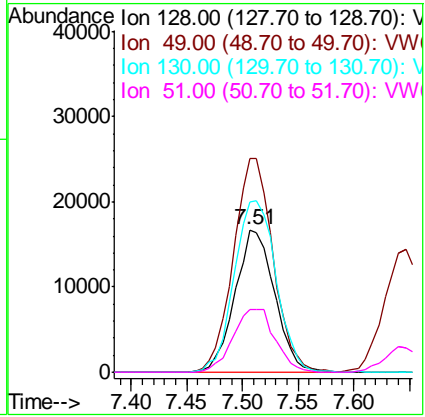




#23
 Bromochloromethane
 Concen: 14.669 ug/L
 RT: 7.51 min Scan# 919
 Delta R.T. -0.01 min
 Lab File: VW013534.D
 Acq: 11 Oct 2019 12:58

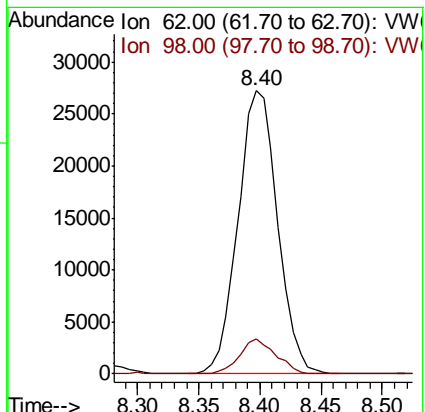
Instrument : MSVOA_W
 ClientSampled : DBAQ5

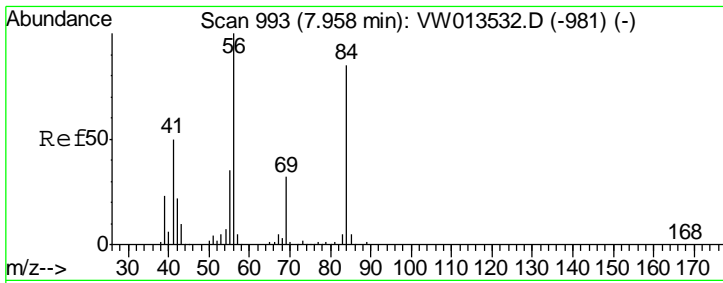
Tgt Ion	Resp	Lower	Upper
128	41571		
49	149.7	108.0	200.6
130	119.1	89.4	166.0
51	44.0	37.4	56.2



#27
 1,2-Dichloroethane
 Concen: 9.864 ug/L
 RT: 8.40 min Scan# 1065
 Delta R.T. 0.00 min
 Lab File: VW013534.D
 Acq: 11 Oct 2019 12:58

Tgt Ion	Resp	Lower	Upper
62	61147		
98	12.3	9.0	13.4

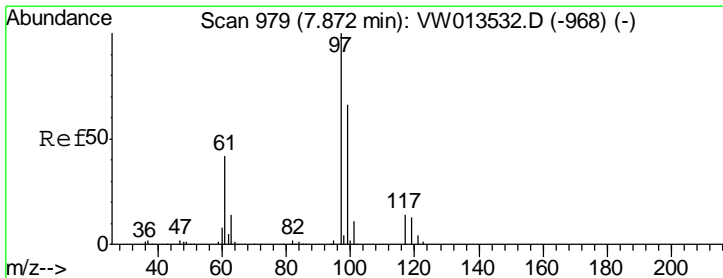
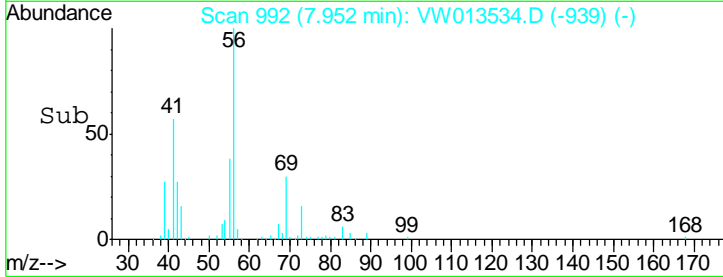
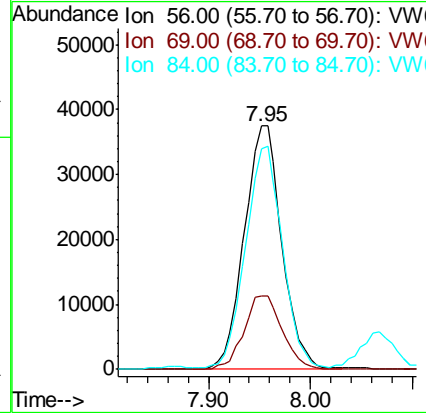
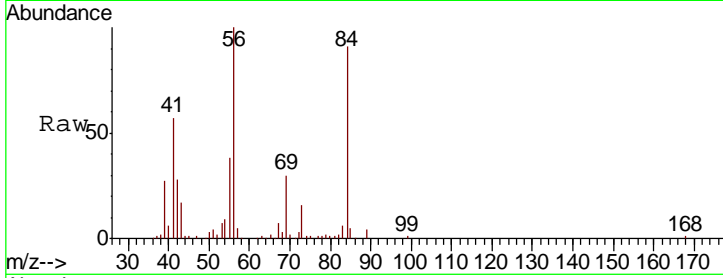




#30
 Cyclohexane
 Concen: 9.548 ug/L
 RT: 7.95 min Scan# 992
 Delta R.T. -0.01 min
 Lab File: VW013534.D
 Acq: 11 Oct 2019 12:58

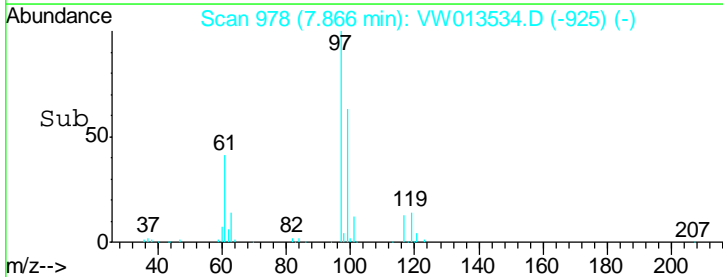
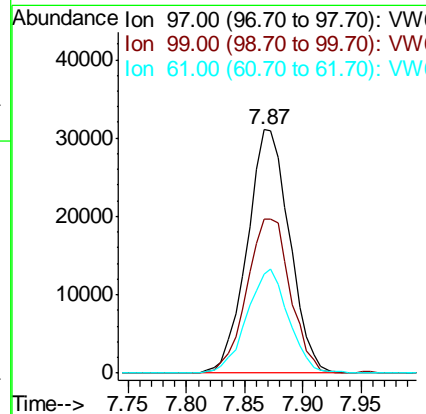
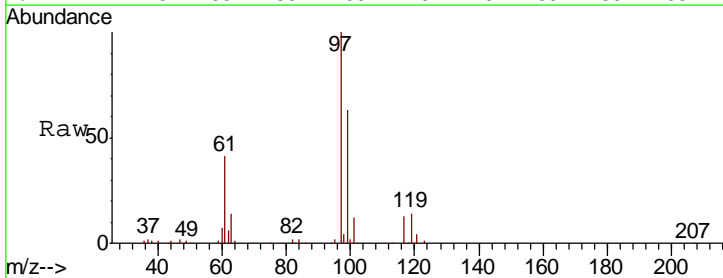
Instrument :
 MSVOA_W
 ClientSampled :
 DBAQ5

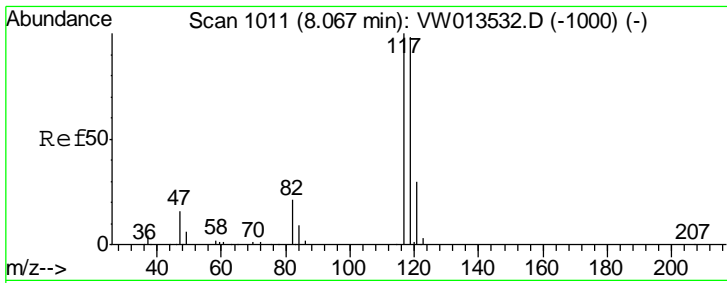
Tgt Ion	Resp	Lower	Upper
56	100		
69	30.6	24.7	37.1
84	90.3	70.4	105.6



#31
 1,1,1-Trichloroethane
 Concen: 10.169 ug/L
 RT: 7.87 min Scan# 978
 Delta R.T. -0.01 min
 Lab File: VW013534.D
 Acq: 11 Oct 2019 12:58

Tgt Ion	Resp	Lower	Upper
97	100		
99	65.0	51.8	77.8
61	41.9	33.7	50.5

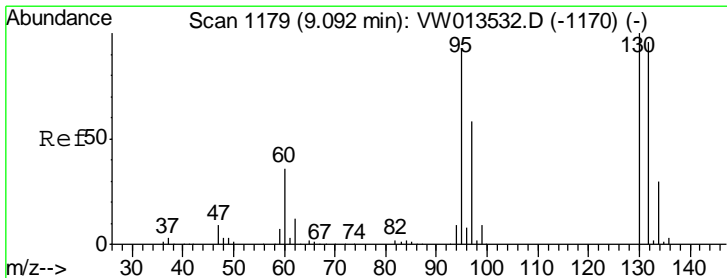
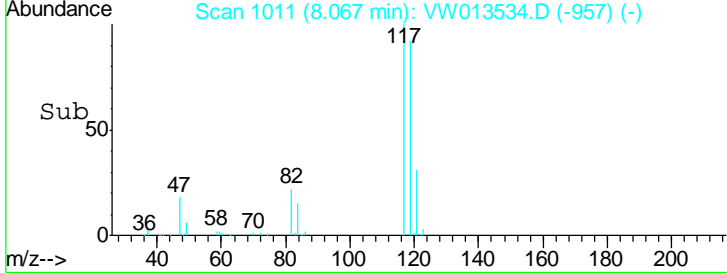
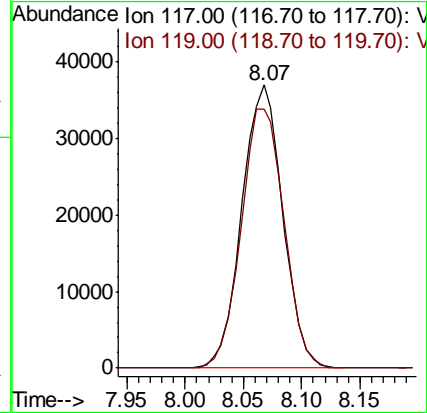
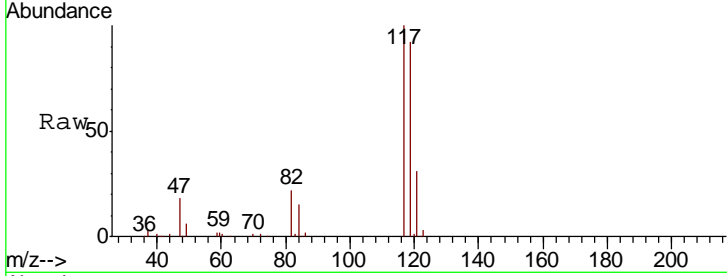




#32
 Carbon tetrachloride
 Concen: 12.201 ug/L
 RT: 8.07 min Scan# 1011
 Delta R.T. 0.00 min
 Lab File: VW013534.D
 Acq: 11 Oct 2019 12:58

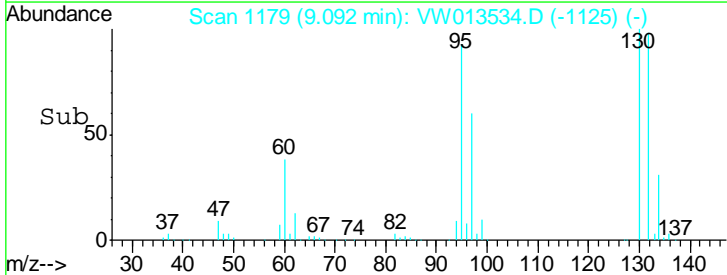
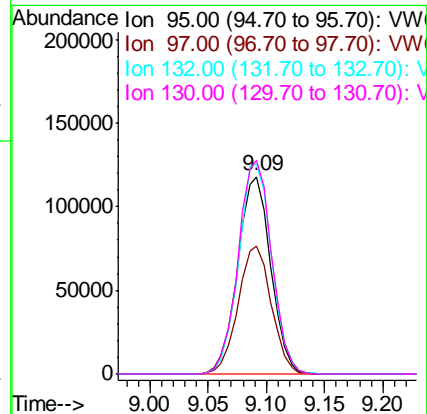
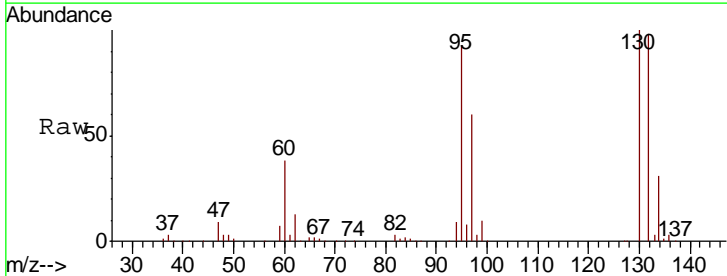
Instrument : MSVOA_W
 ClientSampled : DBAQ5

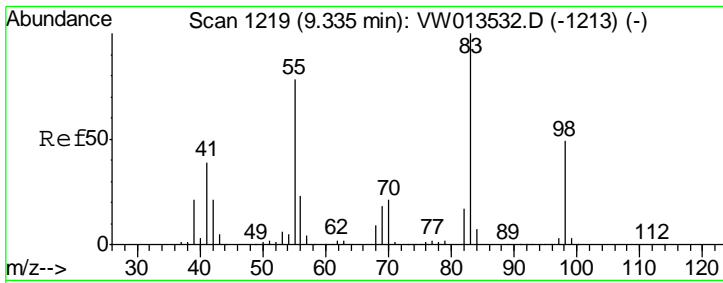
Tgt Ion	Resp	Lower	Upper
117	100		
119	96.4	76.1	114.1



#35
 Trichloroethene
 Concen: 38.748 ug/L
 RT: 9.09 min Scan# 1179
 Delta R.T. 0.00 min
 Lab File: VW013534.D
 Acq: 11 Oct 2019 12:58

Tgt Ion	Resp	Lower	Upper
95	100		
97	64.9	45.1	83.7
132	106.5	73.6	136.8
130	109.6	76.3	141.7

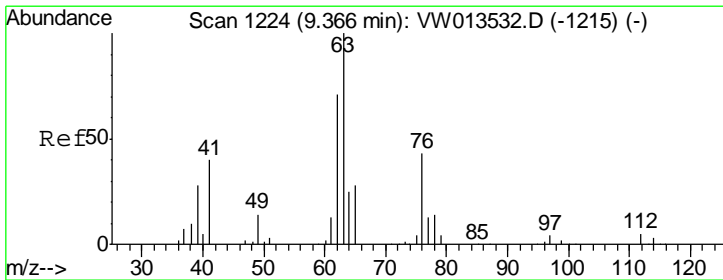
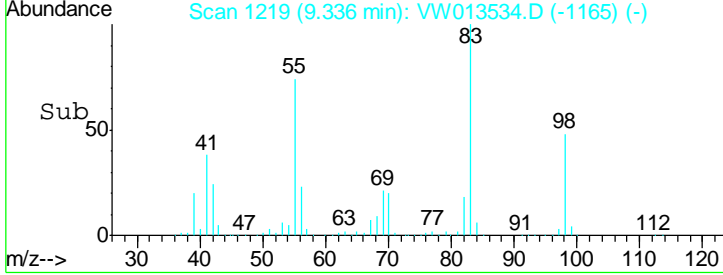
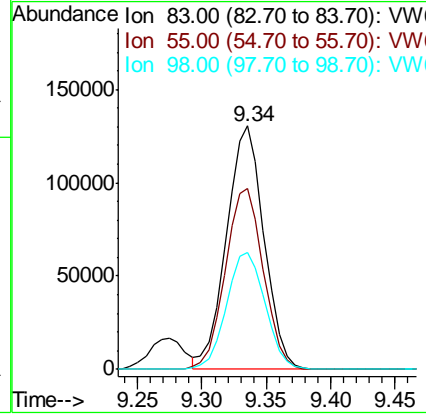
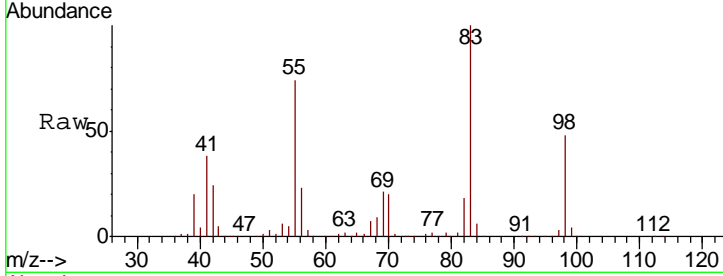




#36
 Methylcyclohexane
 Concen: 24.122 ug/L
 RT: 9.34 min Scan# 1219
 Delta R.T. 0.00 min
 Lab File: VW013534.D
 Acq: 11 Oct 2019 12:58

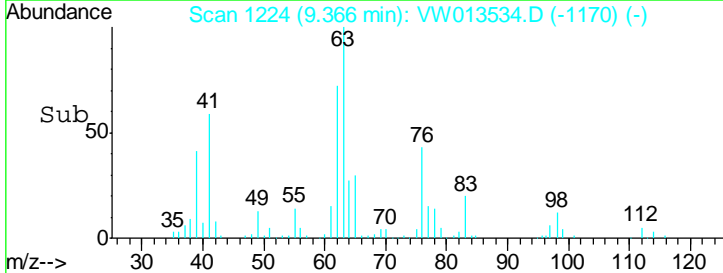
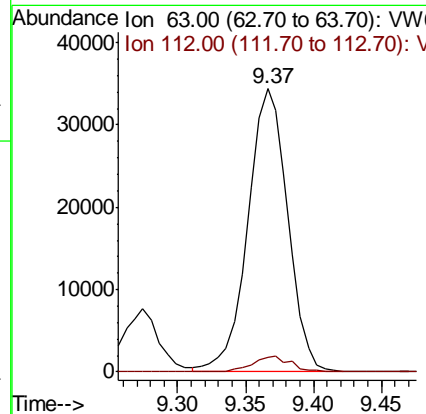
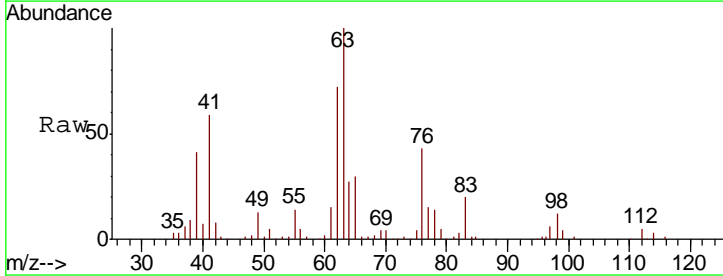
Instrument : MSVOA_W
 ClientSampled : DBAQ5

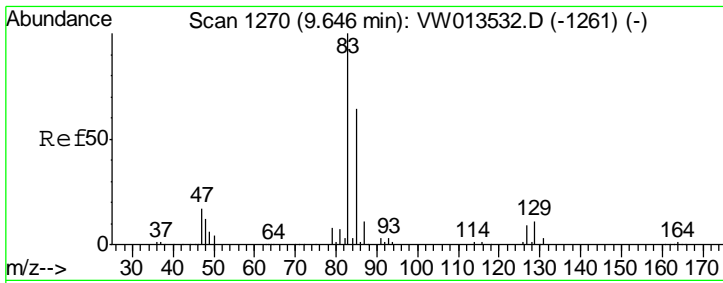
Tgt Ion	Resp	Lower	Upper
83	100		
55	75.3	60.4	90.6
98	49.2	39.3	58.9



#40
 1,2-Dichloropropane
 Concen: 12.662 ug/L
 RT: 9.37 min Scan# 1224
 Delta R.T. 0.00 min
 Lab File: VW013534.D
 Acq: 11 Oct 2019 12:58

Tgt Ion	Resp	Lower	Upper
63	100		
112	5.3	3.8	5.8

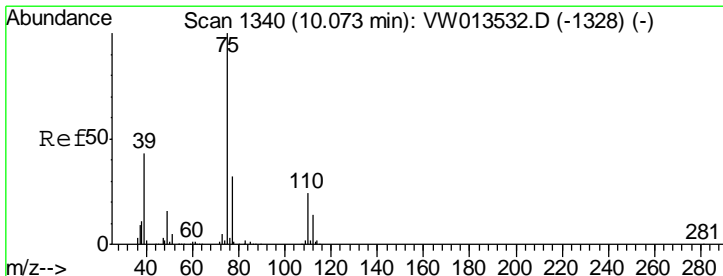
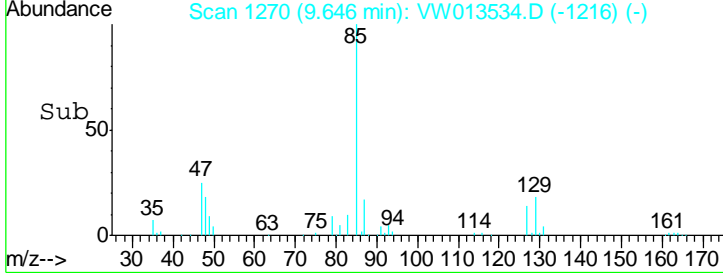
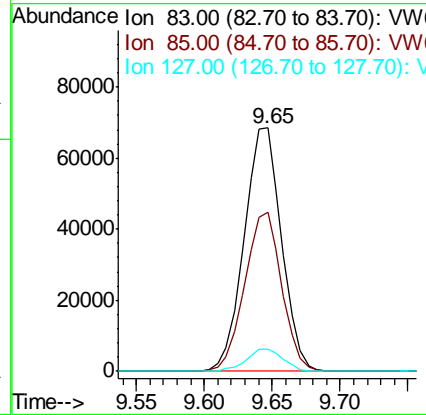
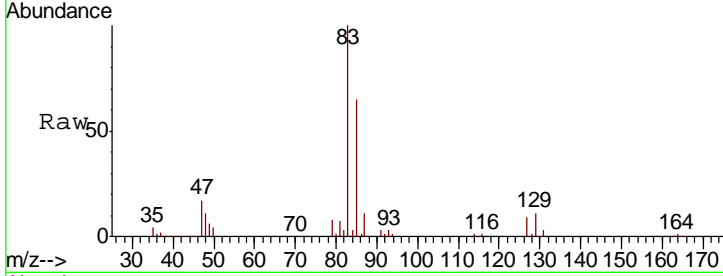




#41
 Bromodichloromethane
 Concen: 19.216 ug/L
 RT: 9.65 min Scan# 1270
 Delta R.T. 0.00 min
 Lab File: VW013534.D
 Acq: 11 Oct 2019 12:58

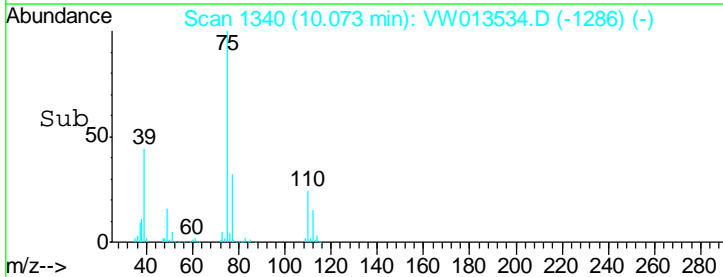
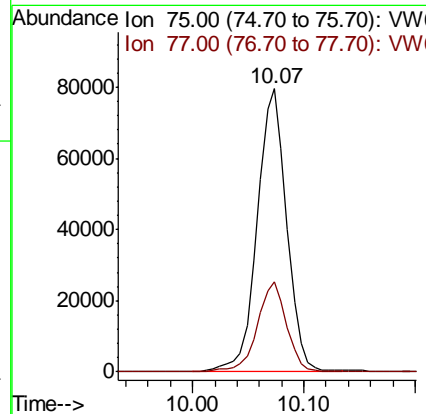
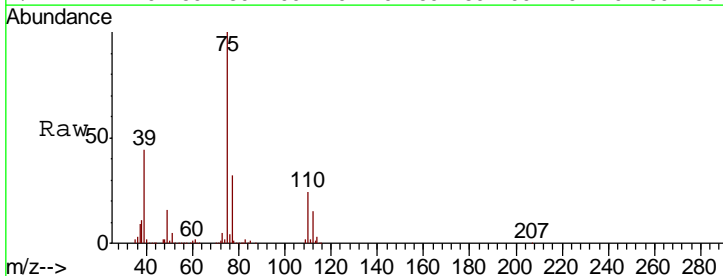
Instrument :
 MSVOA_W
ClientSampled :
 DBAQ5

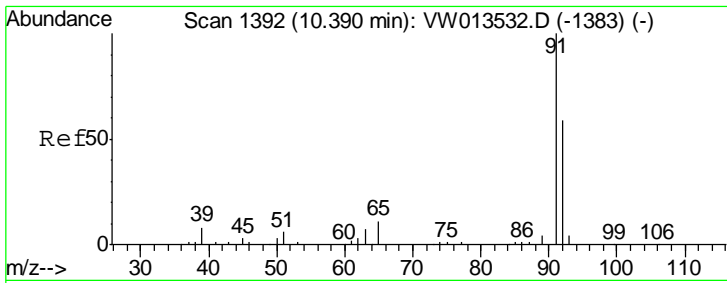
Tgt Ion	Resp	Lower	Upper
83	131709		
85	65.1	45.1	83.9
127	9.0	7.1	10.7



#42
 cis-1,3-Dichloropropene
 Concen: 16.406 ug/L
 RT: 10.07 min Scan# 1340
 Delta R.T. 0.00 min
 Lab File: VW013534.D
 Acq: 11 Oct 2019 12:58

Tgt Ion	Resp	Lower	Upper
75	146867		
77	31.8	21.6	40.2

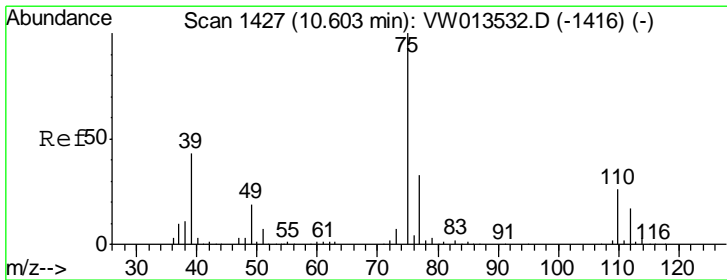
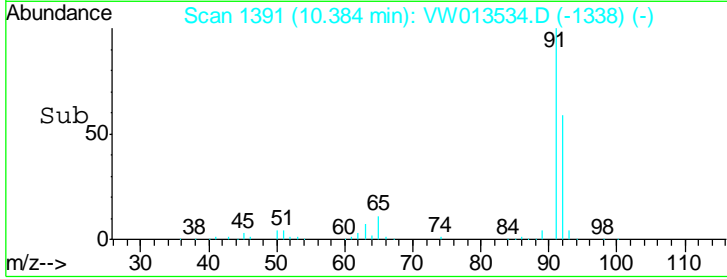
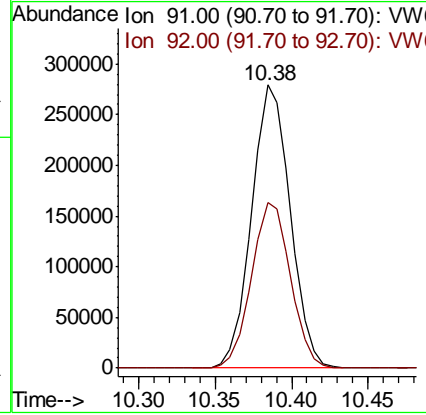
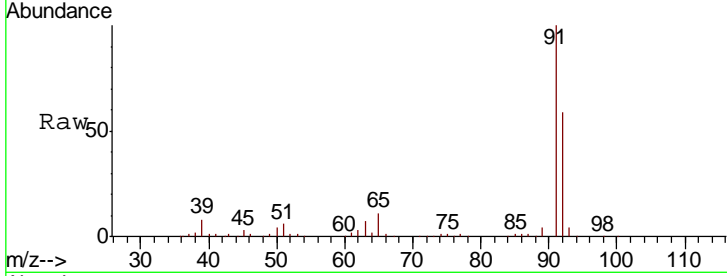




#44
 Toluene
 Concen: 19.575 ug/L
 RT: 10.38 min Scan# 1391
 Delta R.T. -0.01 min
 Lab File: VW013534.D
 Acq: 11 Oct 2019 12:58

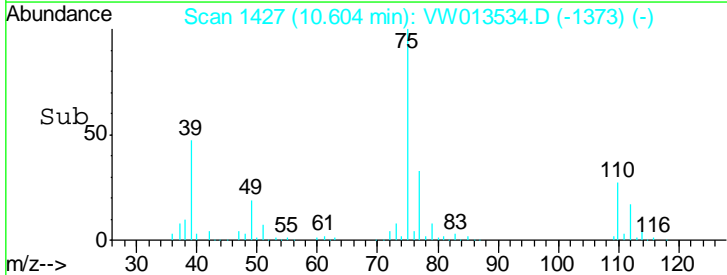
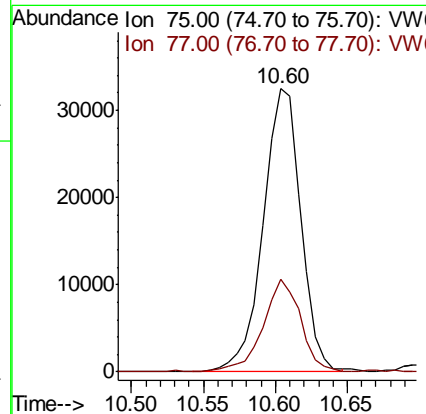
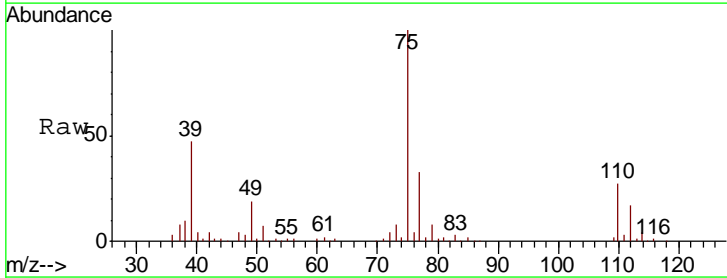
Instrument :
 MSVOA_W
 ClientSampled :
 DBAQ5

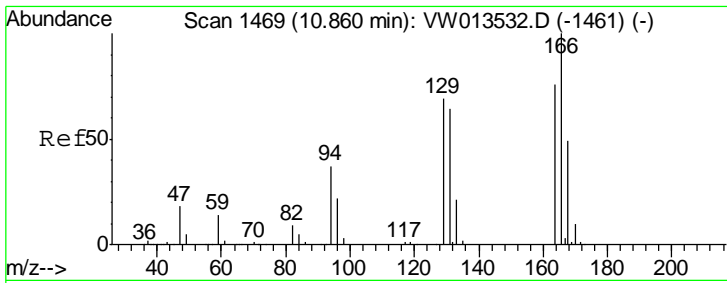
Tgt Ion: 91 Resp: 491415
 Ion Ratio Lower Upper
 91 100
 92 58.6 40.0 74.4



#45
 trans-1,3-Dichloropropene
 Concen: 8.337 ug/L
 RT: 10.60 min Scan# 1427
 Delta R.T. 0.00 min
 Lab File: VW013534.D
 Acq: 11 Oct 2019 12:58

Tgt Ion: 75 Resp: 58931
 Ion Ratio Lower Upper
 75 100
 77 32.5 23.0 42.6

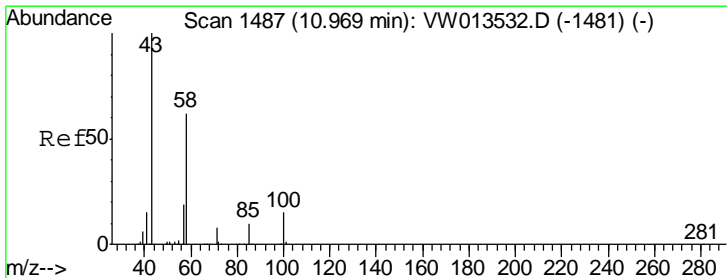
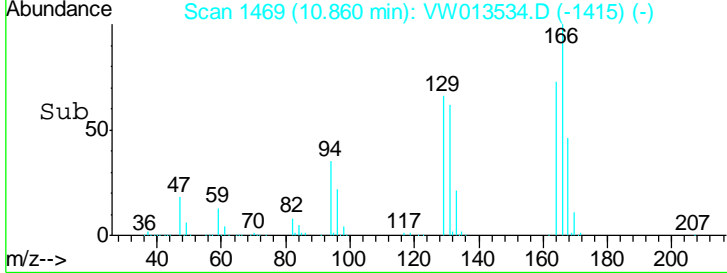
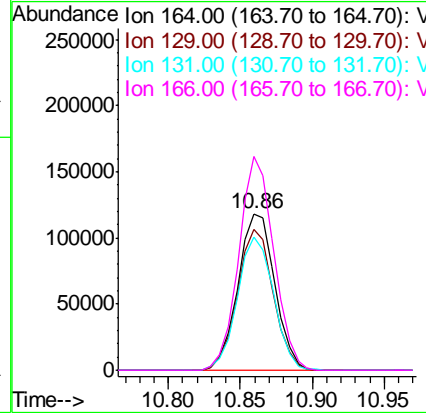
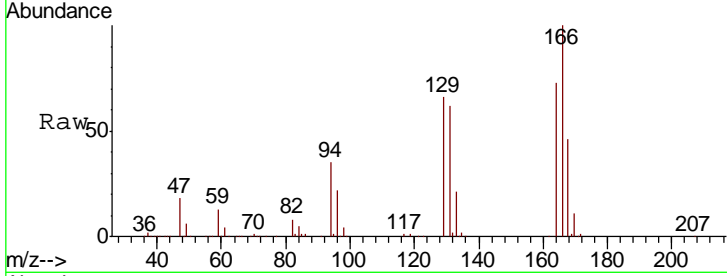




#47
 Tetrachloroethene
 Concen: 38.140 ug/L
 RT: 10.86 min Scan# 1469
 Delta R.T. 0.00 min
 Lab File: VW013534.D
 Acq: 11 Oct 2019 12:58

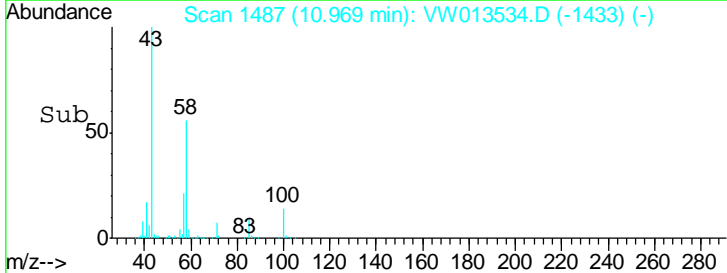
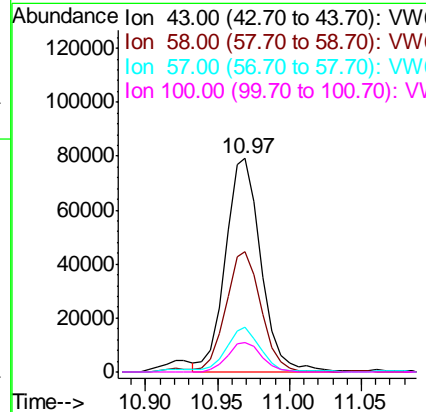
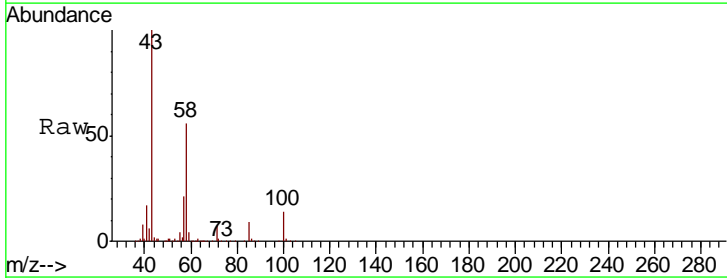
Instrument : MSVOA_W
 ClientSampled : DBAQ5

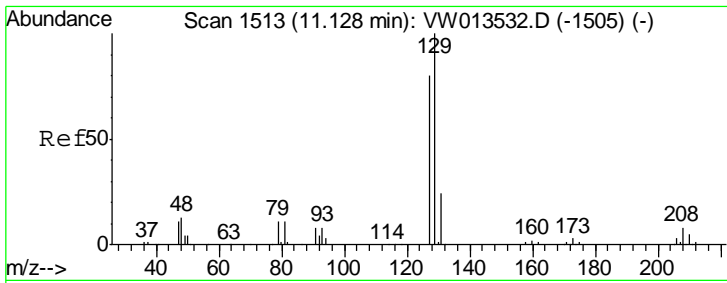
Tgt Ion	Resp	Lower	Upper
164	100		
129	90.1	60.2	111.8
131	85.3	57.0	105.9
166	136.6	91.2	169.4



#49
 2-Hexanone
 Concen: 48.321 ug/L
 RT: 10.97 min Scan# 1487
 Delta R.T. 0.00 min
 Lab File: VW013534.D
 Acq: 11 Oct 2019 12:58

Tgt Ion	Resp	Lower	Upper
43	100		
58	56.1	45.2	67.8
57	19.9	15.8	23.8
100	13.3	11.0	16.6

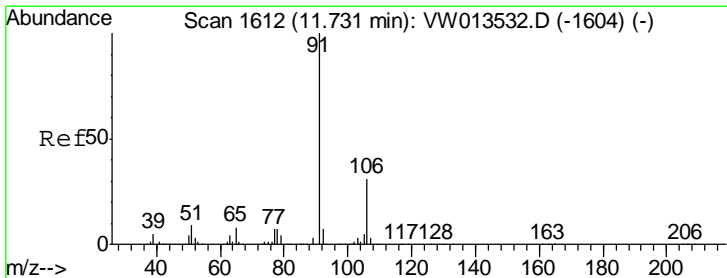
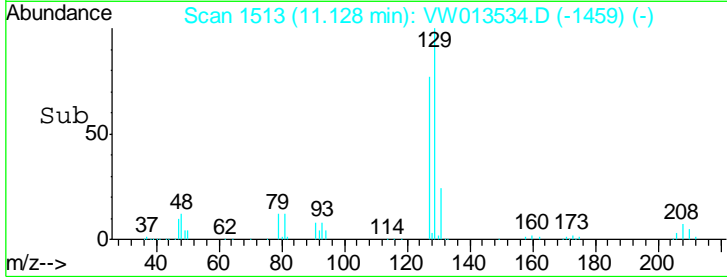
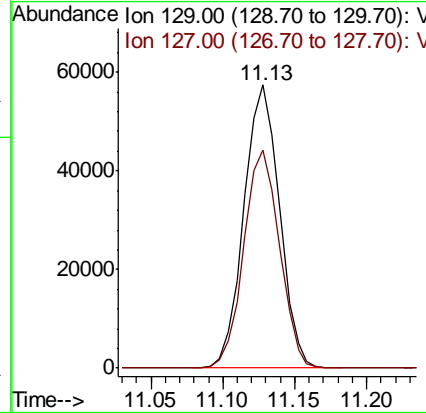
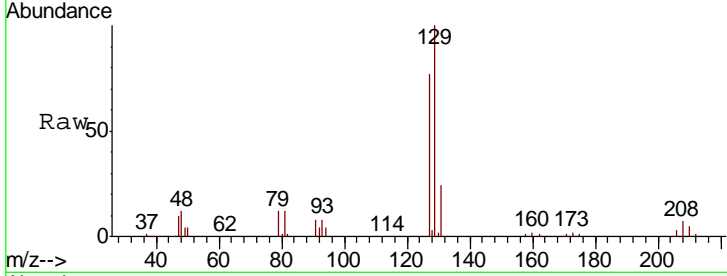




#50
 Dibromochloromethane
 Concen: 19.703 ug/L
 RT: 11.13 min Scan# 1513
 Delta R.T. 0.00 min
 Lab File: VW013534.D
 Acq: 11 Oct 2019 12:58

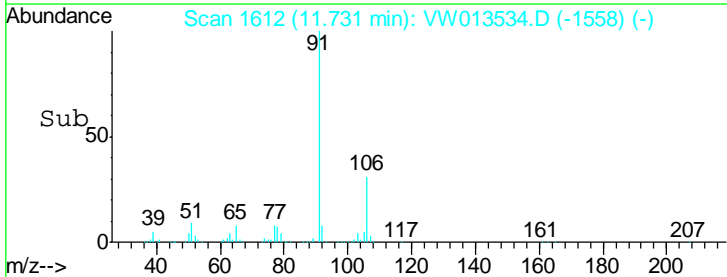
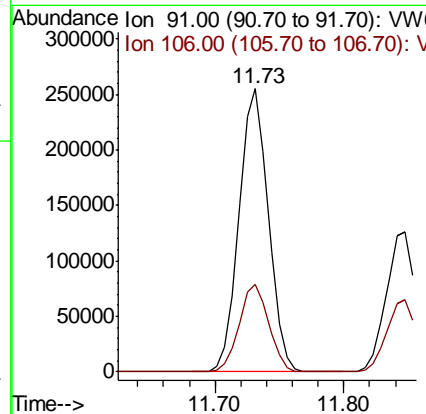
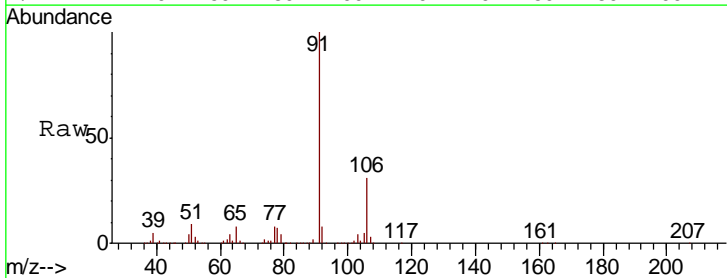
Instrument :
 MSVOA_W
 ClientSampled :
 DBAQ5

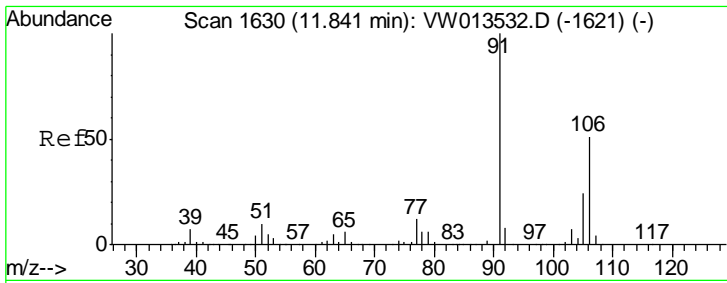
Tgt Ion: 129 Resp: 98266
 Ion Ratio Lower Upper
 129 100
 127 77.2 54.7 101.5



#53
 Ethylbenzene
 Concen: 14.521 ug/L
 RT: 11.73 min Scan# 1612
 Delta R.T. 0.00 min
 Lab File: VW013534.D
 Acq: 11 Oct 2019 12:58

Tgt Ion: 91 Resp: 403514
 Ion Ratio Lower Upper
 91 100
 106 30.8 21.5 39.9

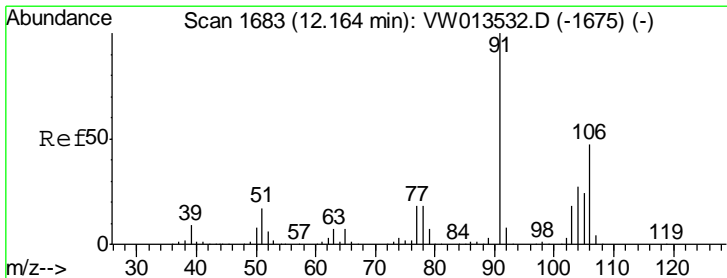
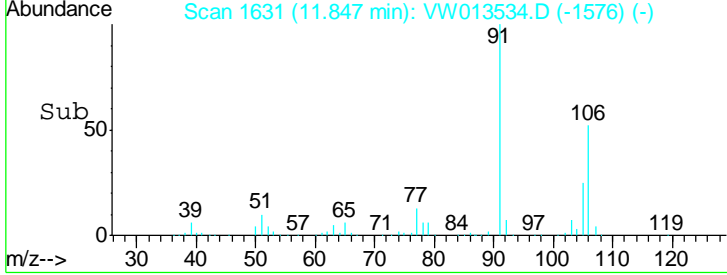
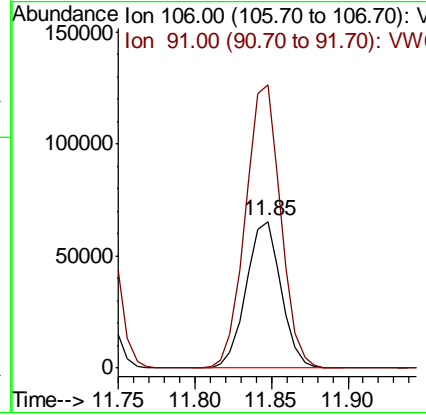
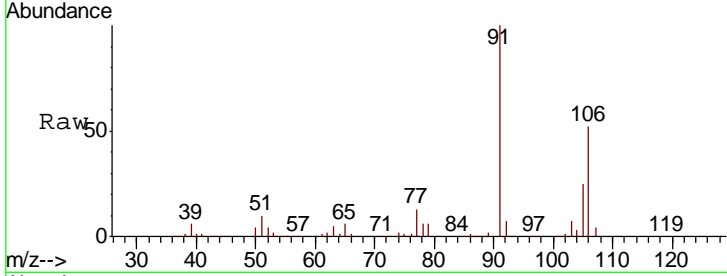




#54
 m,p-Xylene
 Concen: 9.581 ug/L
 RT: 11.85 min Scan# 1631
 Delta R.T. 0.01 min
 Lab File: VW013534.D
 Acq: 11 Oct 2019 12:58

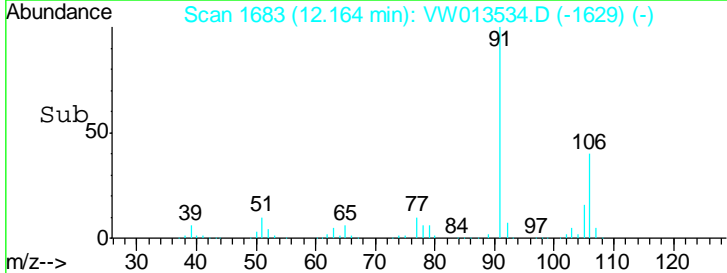
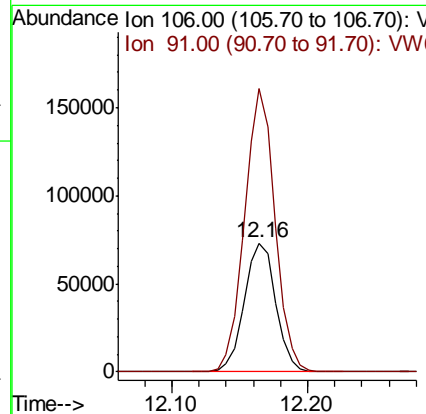
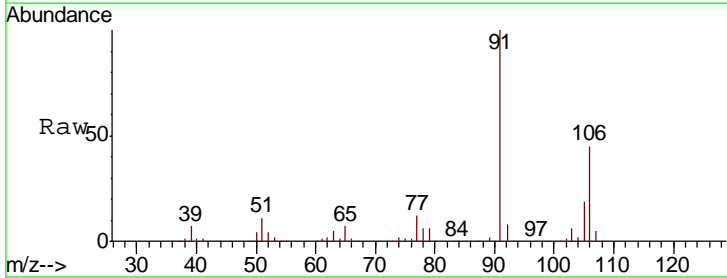
Instrument :
 MSVOA_W
ClientSampled :
 DBAQ5

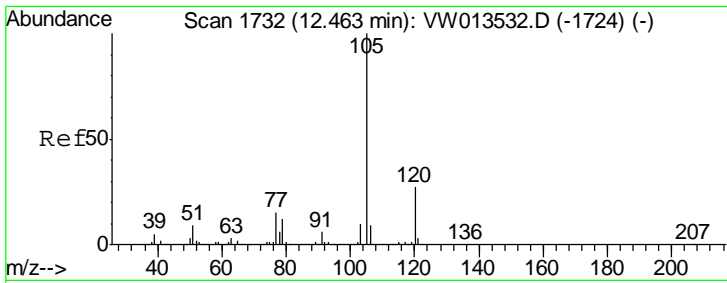
Tgt Ion	Resp	Lower	Upper
106	103855		
91	192.9	139.4	258.8



#55
 o-xylene
 Concen: 11.696 ug/L
 RT: 12.16 min Scan# 1683
 Delta R.T. 0.00 min
 Lab File: VW013534.D
 Acq: 11 Oct 2019 12:58

Tgt Ion	Resp	Lower	Upper
106	118345		
91	219.8	148.4	275.6



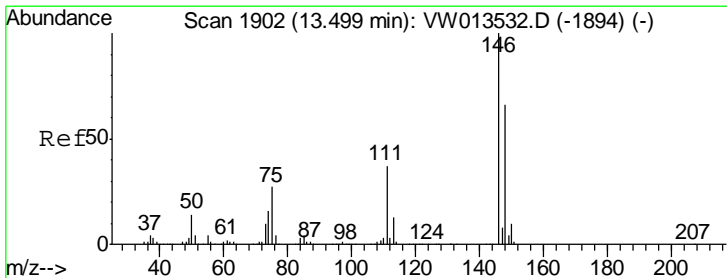
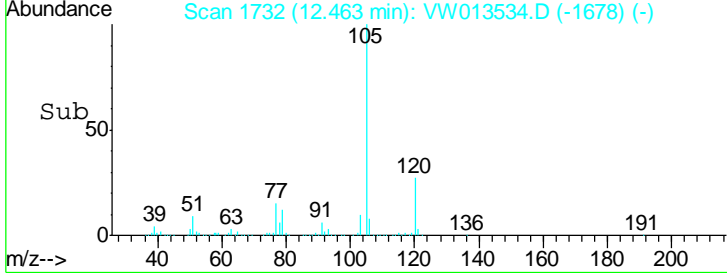
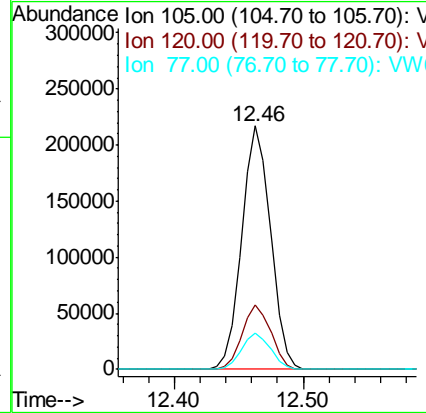
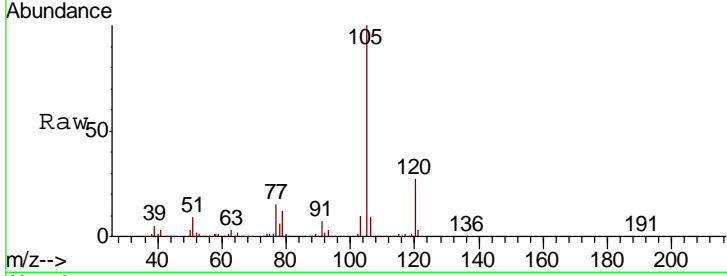


#57

Isopropylbenzene
 Concen: 12.204 ug/L
 RT: 12.46 min Scan# 1732
 Delta R.T. 0.00 min
 Lab File: VW013534.D
 Acq: 11 Oct 2019 12:58

Instrument : MSVOA_W
 ClientSampled : DBAQ5

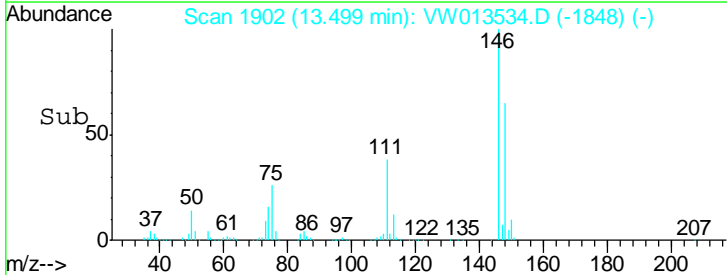
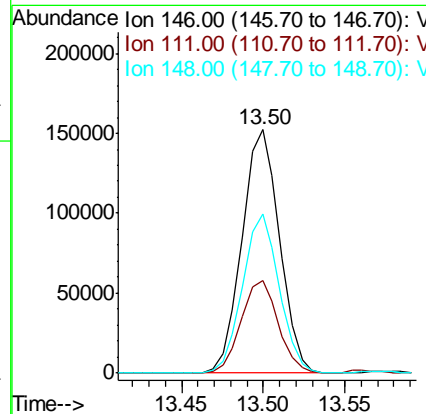
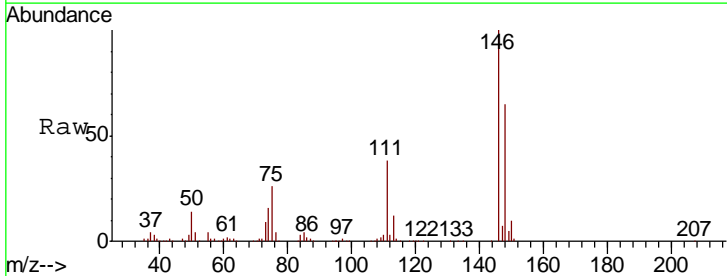
Tgt Ion	Resp	Lower	Upper
105	334996		
120	26.4	21.7	32.5
77	15.0	11.8	17.6

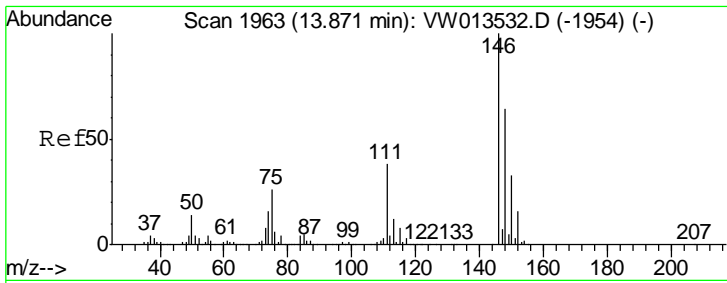


#63

1,3-Dichlorobenzene
 Concen: 19.212 ug/L
 RT: 13.50 min Scan# 1902
 Delta R.T. 0.00 min
 Lab File: VW013534.D
 Acq: 11 Oct 2019 12:58

Tgt Ion	Resp	Lower	Upper
146	243941		
111	38.1	25.3	46.9
148	65.5	42.8	79.4

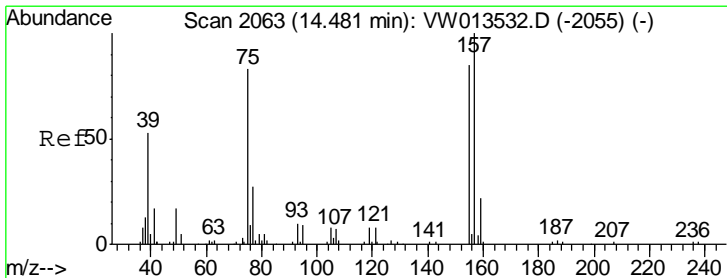
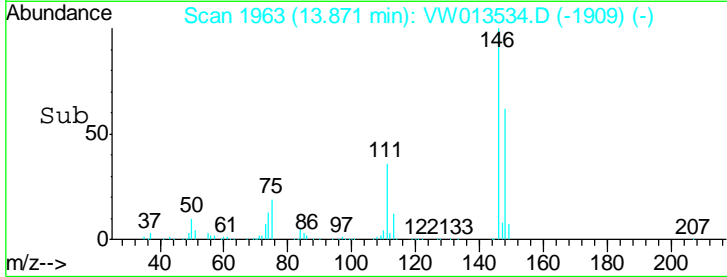
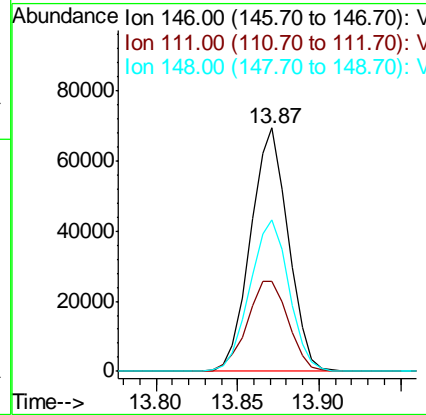
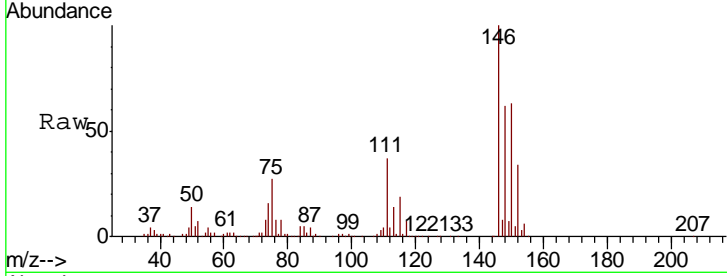




#65
 1,2-Dichlorobenzene
 Concen: 9.785 ug/L
 RT: 13.87 min Scan# 1963
 Delta R.T. 0.00 min
 Lab File: VW013534.D
 Acq: 11 Oct 2019 12:58

Instrument :
 MSVOA_W
 ClientSampled :
 DBAQ5

Tgt Ion	Resp	Lower	Upper
146	111713		
111	37.2	31.0	46.4
148	62.1	50.3	75.5



#66
 1,2-Dibromo-3-chloropropane
 Concen: 22.000 ug/L
 RT: 14.48 min Scan# 2063
 Delta R.T. 0.00 min
 Lab File: VW013534.D
 Acq: 11 Oct 2019 12:58

Tgt Ion	Resp	Lower	Upper
75	17340		
157	117.1	102.0	153.0
155	94.1	77.6	116.4

