

Data Path : Z:\voasrv\HPCHEM1\MSVOA_W\Data\VW101122\
 Data File : VW024839.D
 Acq On : 11 Oct 2022 10:26
 Operator : SY/VA
 Sample : VW1011SBL01
 Misc : 5.00g/10mL/MSVOA_W/SOIL
 ALS Vial : 1 Sample Multiplier: 1

Instrument :
 MSVOA_W
 ClientSampleId :
 VBLK422

Quant Time: Oct 12 01:18:55 2022
 Quant Method : Z:\voasrv\HPCHEM1\MSVOA_W\Method\SFAMWLM092622SMA.M
 Quant Title : SFAM01.0
 QLast Update : Wed Oct 12 01:17:56 2022
 Response via : Initial Calibration

Compound	R.T.	QIon	Response	Conc	Units	Dev(Min)

Internal Standards						
1) 1,4-Difluorobenzene	8.842	114	539759	25.000	ug/L	0.00
28) Chlorobenzene-d5	11.628	117	476939	25.000	ug/L	0.00
58) 1,4-Dichlorobenzene-d4	13.554	152	219687	25.000	ug/L	0.00
System Monitoring Compounds						
4) Vinyl Chloride-d3	2.349	65	149047	26.393	ug/L	0.00
Spiked Amount	25.000	Range 30 - 150	Recovery =	105.560%		
7) Chloroethane-d5	2.879	69	81304	24.775	ug/L	0.00
Spiked Amount	25.000	Range 30 - 150	Recovery =	99.120%		
11) 1,1-Dichloroethene-d2	4.013	63	238813	18.271	ug/L	0.00
Spiked Amount	25.000	Range 45 - 110	Recovery =	73.080%		
21) 2-Butanone-d5	7.080	46	84857	41.794	ug/L	0.00
Spiked Amount	50.000	Range 20 - 135	Recovery =	83.580%		
24) Chloroform-d	7.647	84	339963	23.560	ug/L	0.00
Spiked Amount	25.000	Range 40 - 150	Recovery =	94.240%		
26) 1,2-Dichloroethane-d4	8.427	65	107	0.014	ug/L	0.12
Spiked Amount	25.000	Range 70 - 130	Recovery =	0.040%#		
32) Benzene-d6	8.275	84	746778	24.497	ug/L	0.00
Spiked Amount	25.000	Range 20 - 135	Recovery =	98.000%		
36) 1,2-Dichloropropane-d6	9.268	67	221011	23.729	ug/L	0.00
Spiked Amount	25.000	Range 70 - 120	Recovery =	94.920%		
41) Toluene-d8	10.323	98	665229	24.416	ug/L	0.00
Spiked Amount	25.000	Range 30 - 130	Recovery =	97.680%		
43) trans-1,3-Dichloroprop...	10.573	79	80905	19.505	ug/L	0.00
Spiked Amount	25.000	Range 30 - 135	Recovery =	78.040%		
47) 2-Hexanone-d5	10.921	63	66590	41.786	ug/L	0.00
Spiked Amount	50.000	Range 20 - 135	Recovery =	83.580%		
56) 1,1,2,2-Tetrachloroeth...	12.689	84	153153	23.077	ug/L	0.00
Spiked Amount	25.000	Range 45 - 120	Recovery =	92.320%		
66) 1,2-Dichlorobenzene-d4	13.853	152	191412	24.761	ug/L	0.00
Spiked Amount	25.000	Range 75 - 120	Recovery =	99.040%		

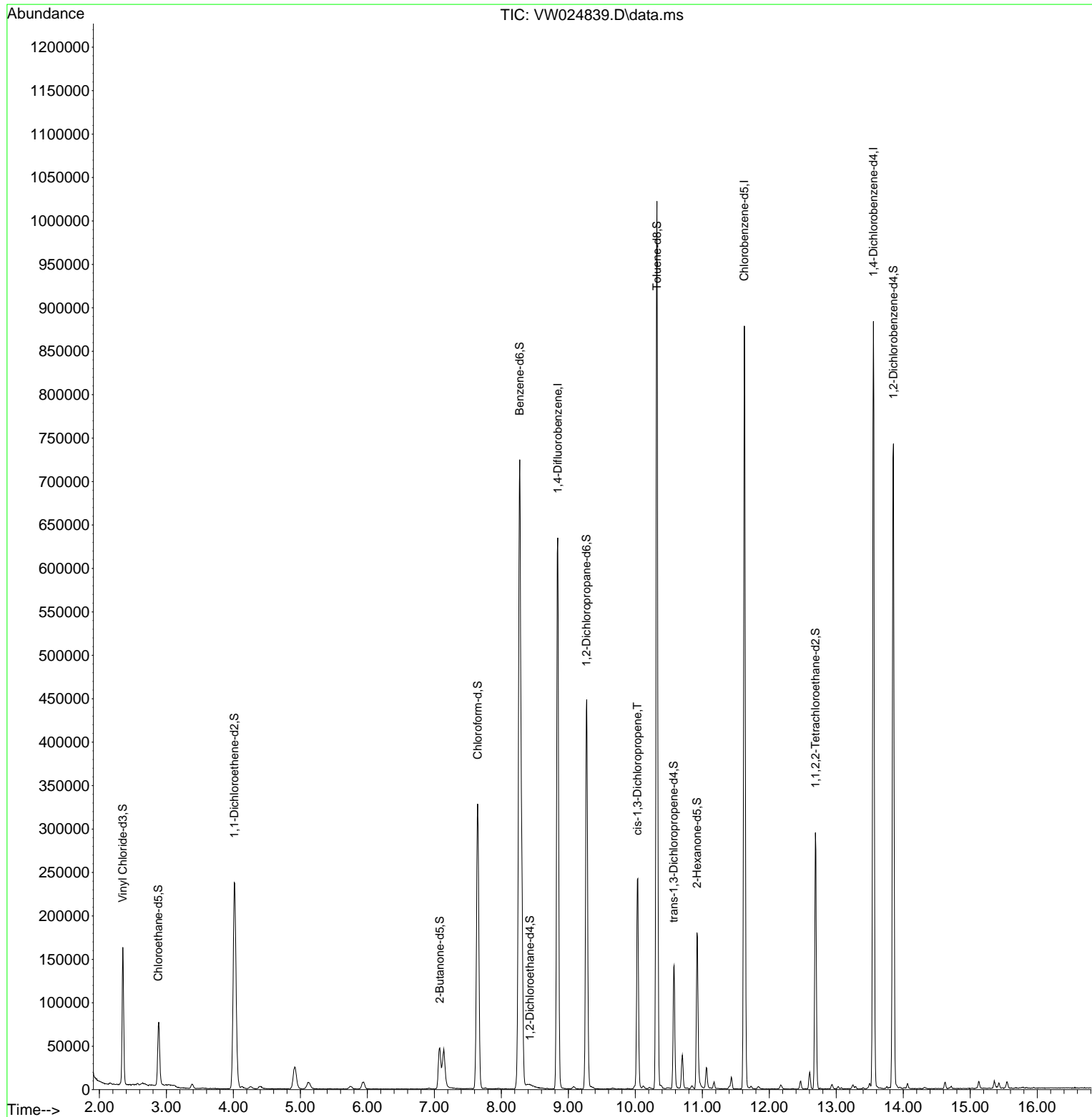
Target Compounds						Qvalue
39) cis-1,3-Dichloropropene	10.030	75	6449	0.495	ug/L #	77

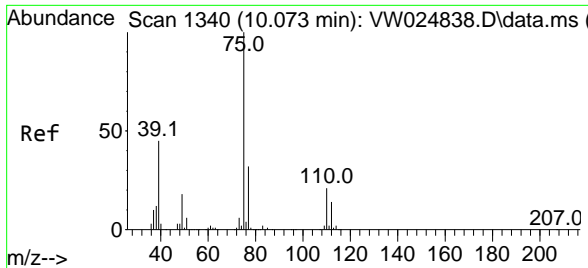
(#) = qualifier out of range (m) = manual integration (+) = signals summed

Data Path : Z:\voasrv\HPCHEM1\MSVOA_W\Data\VW101122\
Data File : VW024839.D
Acq On : 11 Oct 2022 10:26
Operator : SY/VA
Sample : VW1011SBL01
Misc : 5.00g/10mL/MSVOA_W/SOIL
ALS Vial : 1 Sample Multiplier: 1

Instrument :
MSVOA_W
ClientSampleId :
VBLK422

Quant Time: Oct 12 01:18:55 2022
Quant Method : Z:\voasrv\HPCHEM1\MSVOA_W\Method\SFAMWLM092622SMA.M
Quant Title : SFAM01.0
QLast Update : Wed Oct 12 01:17:56 2022
Response via : Initial Calibration





#39
 cis-1,3-Dichloropropene
 Concen: 0.495 ug/L
 RT: 10.030 min Scan# 11
 Delta R.T. -0.043 min
 Lab File: VW024839.D
 Acq: 11 Oct 2022 10:26

Instrument : MSVOA_W
 ClientSampleId : VBLK422

Tgt Ion: 75 Resp: 6449
 Ion Ratio Lower Upper
 75 100
 77 45.0 22.4 41.6#

