

Data Path : Z:\voasrv\HPCHEM1\MSVOA_W\Data\VW101322\
 Data File : VW024902.D
 Acq On : 13 Oct 2022 14:34
 Operator : SY/VA
 Sample : N5070-08RE
 Misc : 6.05g/10mL/MSVOA_W/SOIL
 ALS Vial : 1 Sample Multiplier: 1

Instrument :
 MSVOA_W
 ClientSampleId :
 C0BQ6RE

Quant Time: Oct 14 02:13:08 2022
 Quant Method : Z:\voasrv\HPCHEM1\MSVOA_W\Method\SFAMWLM101222SMA.M
 Quant Title : SFAM01.0
 QLast Update : Fri Oct 14 02:07:33 2022
 Response via : Initial Calibration

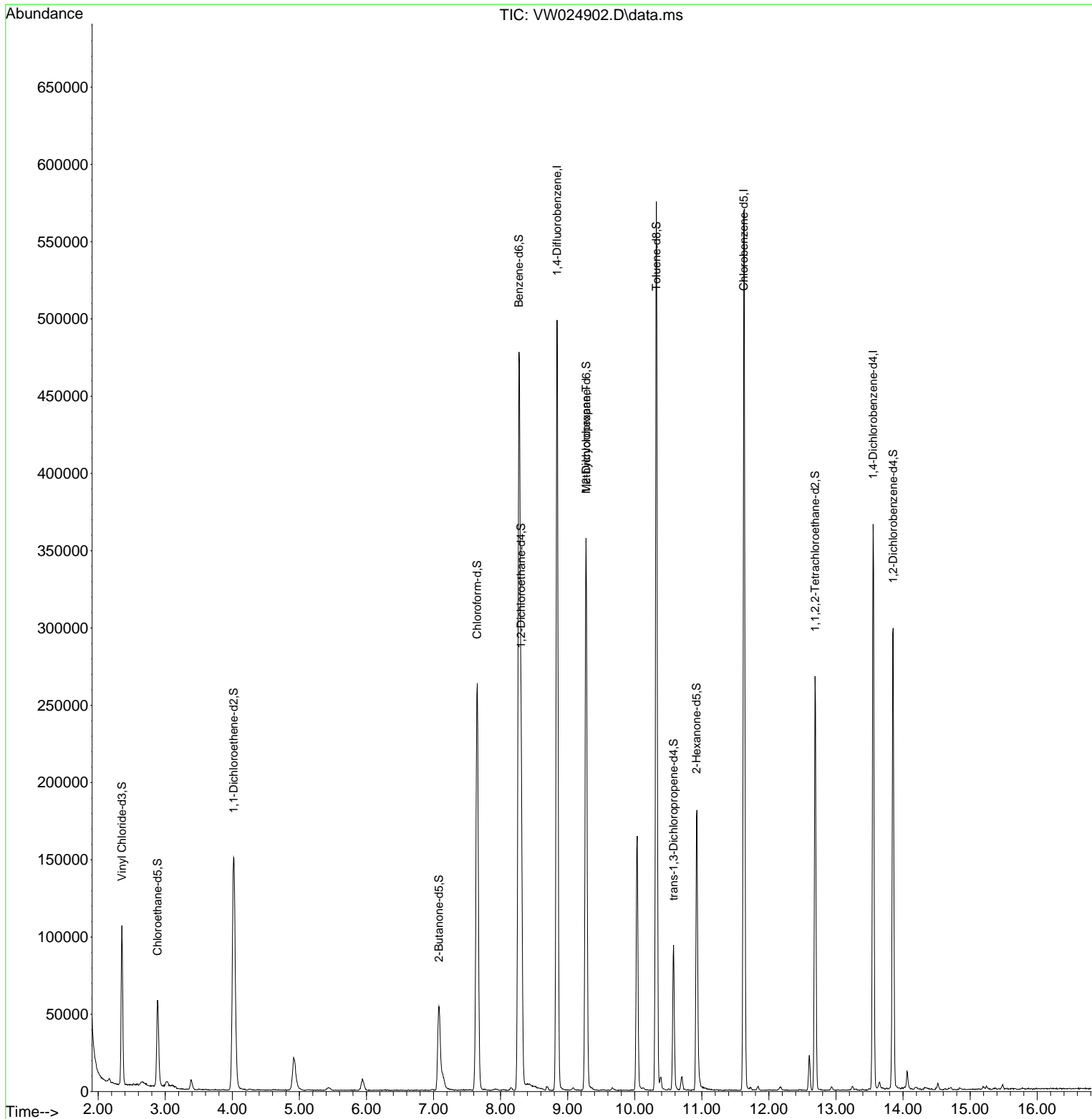
Compound	R.T.	QIon	Response	Conc	Units	Dev(Min)
Internal Standards						
1) 1,4-Difluorobenzene	8.842	114	414466	25.000	ug/L	0.00
28) Chlorobenzene-d5	11.628	117	309082	25.000	ug/L	0.00
58) 1,4-Dichlorobenzene-d4	13.554	152	91740	25.000	ug/L	0.00
System Monitoring Compounds						
4) Vinyl Chloride-d3	2.355	65	97167	19.872	ug/L	0.00
Spiked Amount	25.000	Range 30 - 150	Recovery =	79.480%		
7) Chloroethane-d5	2.885	69	64108	22.393	ug/L	0.00
Spiked Amount	25.000	Range 30 - 150	Recovery =	89.560%		
11) 1,1-Dichloroethene-d2	4.019	63	157015	14.769	ug/L	0.00
Spiked Amount	25.000	Range 45 - 110	Recovery =	59.080%		
21) 2-Butanone-d5	7.080	46	95564	61.681	ug/L	0.00
Spiked Amount	50.000	Range 20 - 135	Recovery =	123.360%		
24) Chloroform-d	7.653	84	274981	23.522	ug/L	0.00
Spiked Amount	25.000	Range 40 - 150	Recovery =	94.080%		
26) 1,2-Dichloroethane-d4	8.305	65	150450	24.591	ug/L	0.00
Spiked Amount	25.000	Range 70 - 130	Recovery =	98.360%		
32) Benzene-d6	8.275	84	502664	25.935	ug/L	0.00
Spiked Amount	25.000	Range 20 - 135	Recovery =	103.720%		
36) 1,2-Dichloropropane-d6	9.274	67	173430	29.174	ug/L	0.00
Spiked Amount	25.000	Range 70 - 120	Recovery =	116.680%		
41) Toluene-d8	10.323	98	379296	21.804	ug/L	0.00
Spiked Amount	25.000	Range 30 - 130	Recovery =	87.200%		
43) trans-1,3-Dichloroprop...	10.579	79	53369	23.671	ug/L	0.00
Spiked Amount	25.000	Range 30 - 135	Recovery =	94.680%		
47) 2-Hexanone-d5	10.920	63	66348	66.570	ug/L	0.00
Spiked Amount	50.000	Range 20 - 135	Recovery =	133.140%		
56) 1,1,2,2-Tetrachloroeth...	12.688	84	137619	29.685	ug/L	0.00
Spiked Amount	25.000	Range 45 - 120	Recovery =	118.720%		
66) 1,2-Dichlorobenzene-d4	13.853	152	75822	22.616	ug/L	0.00
Spiked Amount	25.000	Range 75 - 120	Recovery =	90.480%		
Target Compounds						
35) Methylcyclohexane	9.274	83	41489	4.353	ug/L #	19

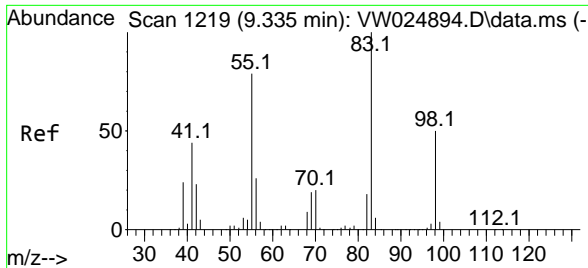
(#) = qualifier out of range (m) = manual integration (+) = signals summed

Data Path : Z:\voasrv\HPCHEM1\MSVOA_W\Data\VW101322\
 Data File : VW024902.D
 Acq On : 13 Oct 2022 14:34
 Operator : SY/VA
 Sample : N5070-08RE
 Misc : 6.05g/10mL/MSVOA_W/SOIL
 ALS Vial : 1 Sample Multiplier: 1

Instrument :
 MSVOA_W
 ClientSampleId :
 C0BQ6RE

Quant Time: Oct 14 02:13:08 2022
 Quant Method : Z:\voasrv\HPCHEM1\MSVOA_W\Method\SFAMWLM101222SMA.M
 Quant Title : SFAM01.0
 QLast Update : Fri Oct 14 02:07:33 2022
 Response via : Initial Calibration





#35
 Methylcyclohexane
 Concen: 4.353 ug/L
 RT: 9.274 min Scan# 11
 Delta R.T. -0.061 min
 Lab File: VW024902.D
 Acq: 13 Oct 2022 14:34

Instrument :
 MSVOA_W
 ClientSampleId :
 C0BQ6RE

Tgt Ion: 83 Resp: 41489

Ion	Ratio	Lower	Upper
83	100		
55	0.3	62.5	93.7#
98	1.7	37.2	55.8#

