

Data Path : Z:\voasrv\HPCHEM1\MSVOA_W\Data\VW101524\
 Data File : VW030608.D
 Acq On : 15 Oct 2024 15:22
 Operator : SY/MD
 Sample : VIBLK
 Misc : 5.01g/10mL/MSVOA_W/SOIL/A
 ALS Vial : 13 Sample Multiplier: 1

Instrument :
 MSVOA_W
 ClientSampleId :

Quant Time: Oct 16 01:31:34 2024
 Quant Method : Z:\voasrv\HPCHEM1\MSVOA_W\Method\SFAMWLM100924SMA.M
 Quant Title : SFAM01.0
 QLast Update : Wed Oct 16 01:28:14 2024
 Response via : Initial Calibration

Compound	R.T.	QIon	Response	Conc	Units	Dev(Min)

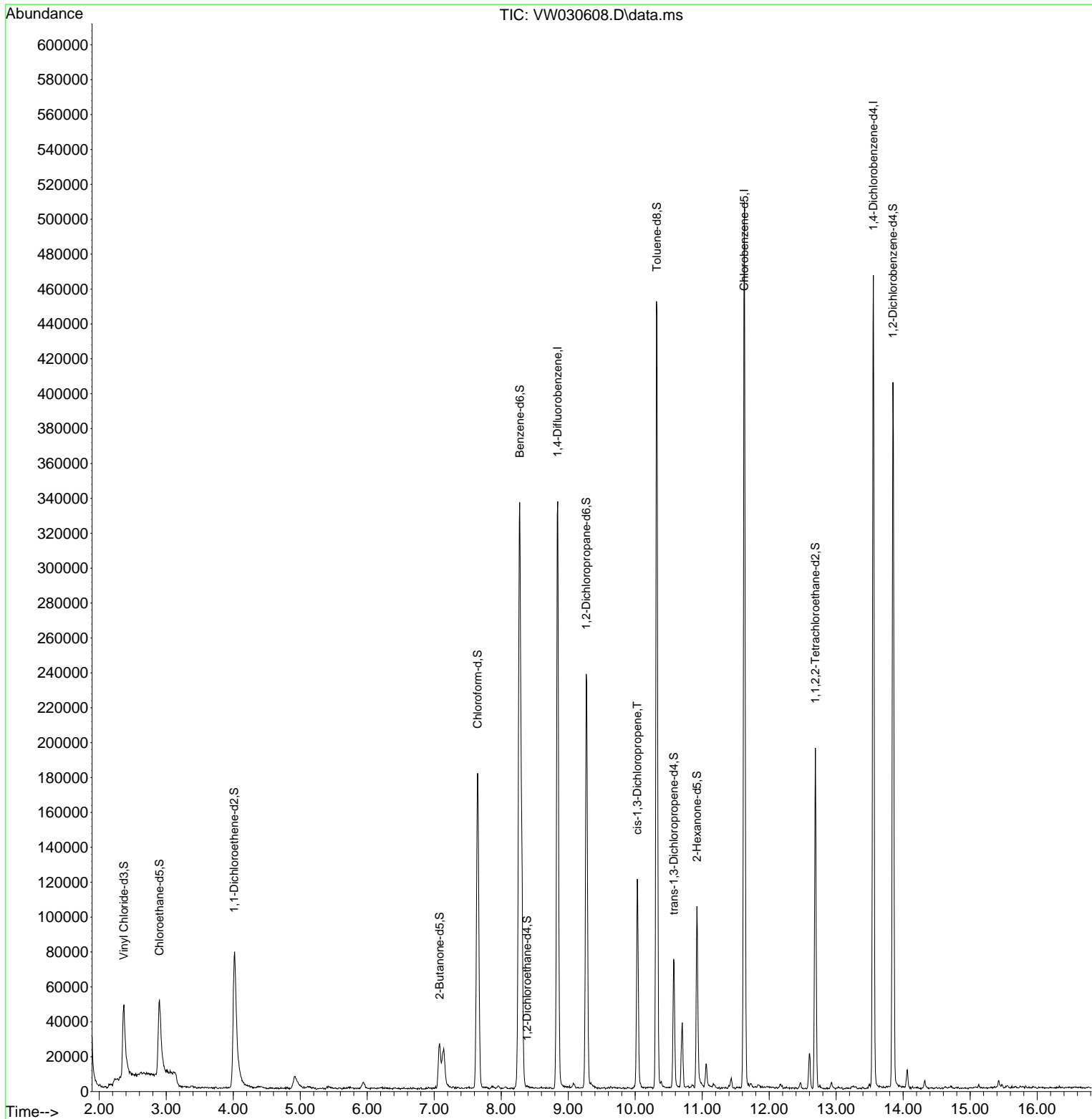
Internal Standards						
1) 1,4-Difluorobenzene	8.843	114	269989	25.000	ug/L	0.00
28) Chlorobenzene-d5	11.629	117	249261	25.000	ug/L	0.00
58) 1,4-Dichlorobenzene-d4	13.556	152	115032	25.000	ug/L	0.00
System Monitoring Compounds						
4) Vinyl Chloride-d3	2.369	65	79763	18.795	ug/L	0.00
Spiked Amount	25.000	Range 30 - 150	Recovery =	75.200%		
7) Chloroethane-d5	2.899	69	73492	22.878	ug/L	0.00
Spiked Amount	25.000	Range 30 - 150	Recovery =	91.520%		
11) 1,1-Dichloroethene-d2	4.015	65	34087	19.312	ug/L	0.00
Spiked Amount	25.000	Range 45 - 110	Recovery =	77.240%		
21) 2-Butanone-d5	7.081	46	42573	55.744	ug/L	0.00
Spiked Amount	50.000	Range 20 - 135	Recovery =	111.480%		
24) Chloroform-d	7.648	84	177743	23.020	ug/L	0.00
Spiked Amount	25.000	Range 40 - 150	Recovery =	92.080%		
26) 1,2-Dichloroethane-d4	8.386	65	194	0.048	ug/L	0.09
Spiked Amount	25.000	Range 70 - 130	Recovery =	0.200%#		
32) Benzene-d6	8.276	84	327550	22.641	ug/L	0.00
Spiked Amount	25.000	Range 20 - 135	Recovery =	90.560%		
36) 1,2-Dichloropropane-d6	9.270	67	102228	24.075	ug/L	0.00
Spiked Amount	25.000	Range 70 - 120	Recovery =	96.320%		
41) Toluene-d8	10.325	98	291718	22.088	ug/L	0.00
Spiked Amount	25.000	Range 30 - 130	Recovery =	88.360%		
43) trans-1,3-Dichloroprop...	10.575	79	39260	22.080	ug/L	0.00
Spiked Amount	25.000	Range 30 - 135	Recovery =	88.320%		
47) 2-Hexanone-d5	10.922	63	32158	58.799	ug/L	0.00
Spiked Amount	50.000	Range 20 - 135	Recovery =	117.600%		
56) 1,1,2,2-Tetrachloroeth...	12.690	84	89028	28.549	ug/L	0.00
Spiked Amount	25.000	Range 45 - 120	Recovery =	114.200%		
66) 1,2-Dichlorobenzene-d4	13.848	152	96304	24.743	ug/L	0.00
Spiked Amount	25.000	Range 75 - 120	Recovery =	98.960%		
Target Compounds						
39) cis-1,3-Dichloropropene	10.032	75	3455	0.565	ug/L #	59

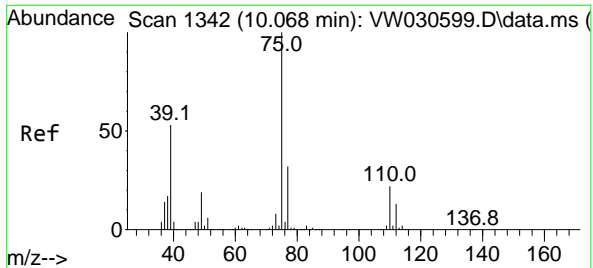
(#) = qualifier out of range (m) = manual integration (+) = signals summed

Data Path : Z:\voasrv\HPCHEM1\MSVOA_W\Data\VW101524\
 Data File : VW030608.D
 Acq On : 15 Oct 2024 15:22
 Operator : SY/MD
 Sample : VIBLK
 Misc : 5.01g/10mL/MSVOA_W/SOIL/A
 ALS Vial : 13 Sample Multiplier: 1

Instrument :
 MSVOA_W
 ClientSampleId :

Quant Time: Oct 16 01:31:34 2024
 Quant Method : Z:\voasrv\HPCHEM1\MSVOA_W\Method\SFAMWLM100924SMA.M
 Quant Title : SFAM01.0
 QLast Update : Wed Oct 16 01:28:14 2024
 Response via : Initial Calibration





#39
 cis-1,3-Dichloropropene
 Concen: 0.565 ug/L
 RT: 10.032 min Scan# 11
 Delta R.T. -0.037 min
 Lab File: VW030608.D
 Acq: 15 Oct 2024 15:22

Instrument :
 MSVOA_W
 ClientSampleId :

Tgt Ion	Resp	Ion Ratio	Lower	Upper
75	3455	100		
77		52.2	21.1	39.1#

