

Data Path : Z:\voasrv\HPCHEM1\MSVOA\_W\Data\VW101823\  
 Data File : VW027330.D  
 Acq On : 18 Oct 2023 17:43  
 Operator : SY/MD  
 Sample : 04922-13  
 Misc : 5.52g/10mL/MSVOA\_W/SOIL  
 ALS Vial : 1 Sample Multiplier: 1

Instrument :  
 MSVOA\_W  
 ClientSampleId :

Quant Time: Oct 18 22:23:34 2023  
 Quant Method : Z:\voasrv\HPCHEM1\MSVOA\_W\Method\SFAMWLM101123SMA.M  
 Quant Title : SFAM01.0  
 QLast Update : Wed Oct 18 22:20:28 2023  
 Response via : Initial Calibration

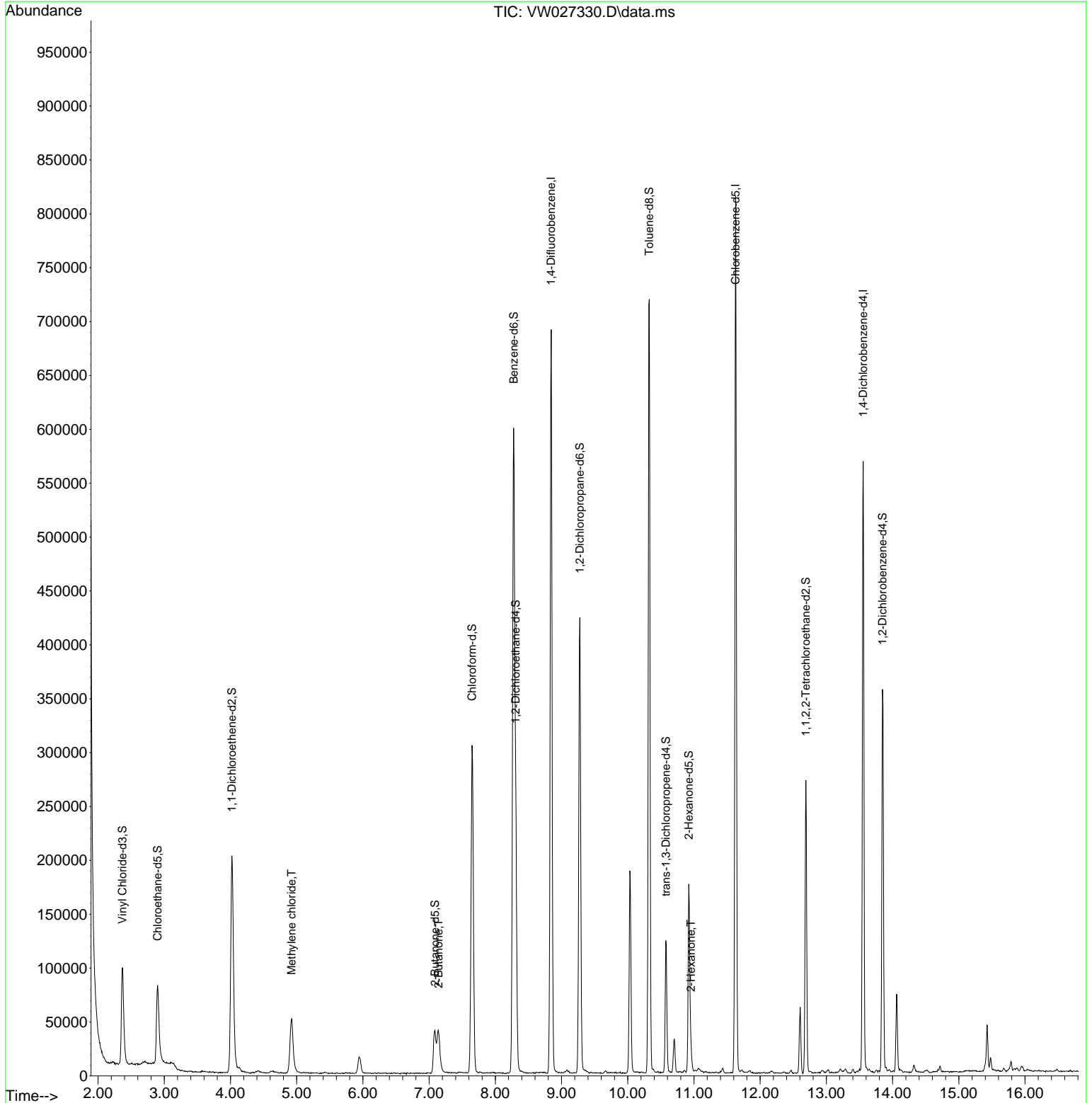
Compound	R.T.	QIon	Response	Conc	Units	Dev(Min)
Internal Standards						
1) 1,4-Difluorobenzene	8.843	114	554319	25.000	ug/L	0.00
28) Chlorobenzene-d5	11.629	117	411743	25.000	ug/L	0.00
58) 1,4-Dichlorobenzene-d4	13.556	152	139204	25.000	ug/L	0.00
System Monitoring Compounds						
4) Vinyl Chloride-d3	2.369	65	140696	16.631	ug/L	0.00
Spiked Amount	25.000	Range 30 - 150	Recovery =	66.520%		
7) Chloroethane-d5	2.899	69	112973	18.598	ug/L	0.00
Spiked Amount	25.000	Range 30 - 150	Recovery =	74.400%		
11) 1,1-Dichloroethene-d2	4.021	65	70045	16.524	ug/L	0.00
Spiked Amount	25.000	Range 45 - 110	Recovery =	66.080%		
21) 2-Butanone-d5	7.088	46	67588	24.037	ug/L	0.01
Spiked Amount	50.000	Range 20 - 135	Recovery =	48.080%		
24) Chloroform-d	7.648	84	310424	18.789	ug/L	0.00
Spiked Amount	25.000	Range 40 - 150	Recovery =	75.160%		
26) 1,2-Dichloroethane-d4	8.307	65	175959	19.827	ug/L	0.00
Spiked Amount	25.000	Range 70 - 130	Recovery =	79.320%		
32) Benzene-d6	8.276	84	608322	21.837	ug/L	0.00
Spiked Amount	25.000	Range 20 - 135	Recovery =	87.360%		
36) 1,2-Dichloropropane-d6	9.276	67	200038	23.510	ug/L	0.00
Spiked Amount	25.000	Range 70 - 120	Recovery =	94.040%		
41) Toluene-d8	10.325	98	479629	18.986	ug/L	0.00
Spiked Amount	25.000	Range 30 - 130	Recovery =	75.960%		
43) trans-1,3-Dichloroprop...	10.575	79	67547	17.411	ug/L	0.00
Spiked Amount	25.000	Range 30 - 135	Recovery =	69.640%		
47) 2-Hexanone-d5	10.922	63	57464	32.642	ug/L	0.00
Spiked Amount	50.000	Range 20 - 135	Recovery =	65.280%		
56) 1,1,2,2-Tetrachloroeth...	12.690	84	138644	21.840	ug/L	0.00
Spiked Amount	25.000	Range 45 - 120	Recovery =	87.360%		
66) 1,2-Dichlorobenzene-d4	13.849	152	90809	18.002	ug/L	0.00
Spiked Amount	25.000	Range 75 - 120	Recovery =	72.000%#		
Target Compounds						
16) Methylene chloride	4.923	84	41249	4.065	ug/L	95
22) 2-Butanone	7.142	43	23886	6.571	ug/L #	53
48) 2-Hexanone	10.953	43	10871	2.935	ug/L #	40

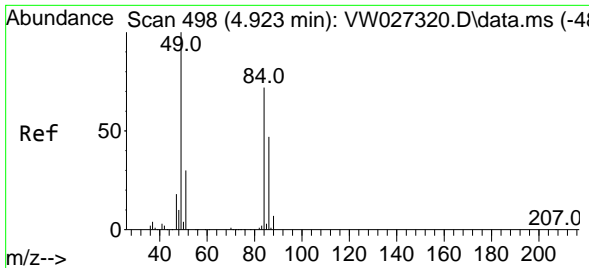
(#) = qualifier out of range (m) = manual integration (+) = signals summed

Data Path : Z:\voasrv\HPCHEM1\MSVOA\_W\Data\VW101823\  
 Data File : VW027330.D  
 Acq On : 18 Oct 2023 17:43  
 Operator : SY/MD  
 Sample : 04922-13  
 Misc : 5.52g/10mL/MSVOA\_W/SOIL  
 ALS Vial : 1 Sample Multiplier: 1

Instrument :  
 MSVOA\_W  
 ClientSampleId :

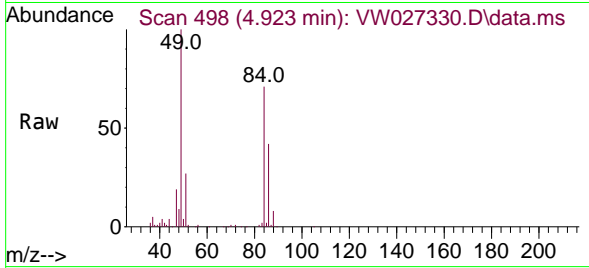
Quant Time: Oct 18 22:23:34 2023  
 Quant Method : Z:\voasrv\HPCHEM1\MSVOA\_W\Method\SFAMWLM101123SMA.M  
 Quant Title : SFAM01.0  
 QLast Update : Wed Oct 18 22:20:28 2023  
 Response via : Initial Calibration



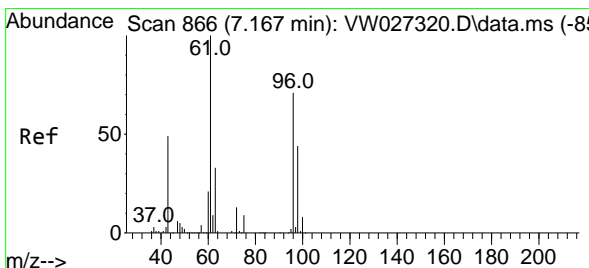
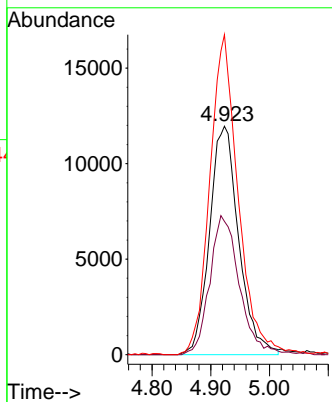
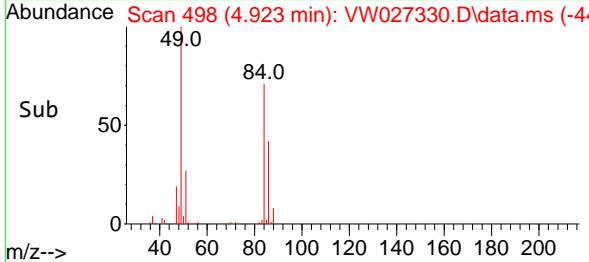


#16  
 Methylene chloride  
 Concen: 4.065 ug/L  
 RT: 4.923 min Scan# 49  
 Delta R.T. 0.000 min  
 Lab File: VW027330.D  
 Acq: 18 Oct 2023 17:43

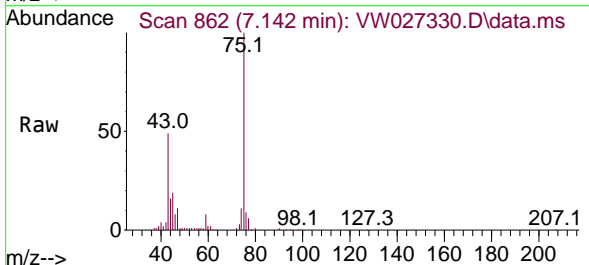
Instrument :  
 MSVOA\_W  
 ClientSampleId :



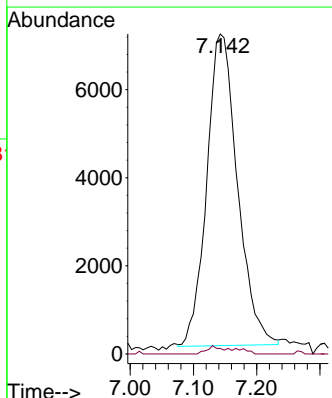
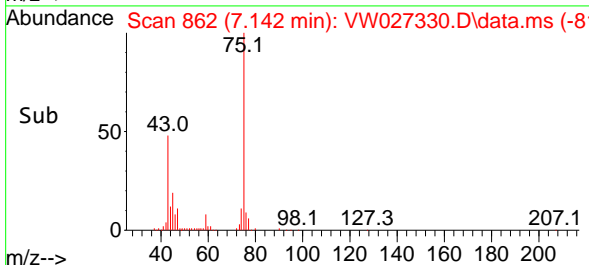
Tgt Ion: 84 Resp: 41249  
 Ion Ratio Lower Upper  
 84 100  
 86 58.3 41.3 76.7  
 49 140.0 92.8 172.4

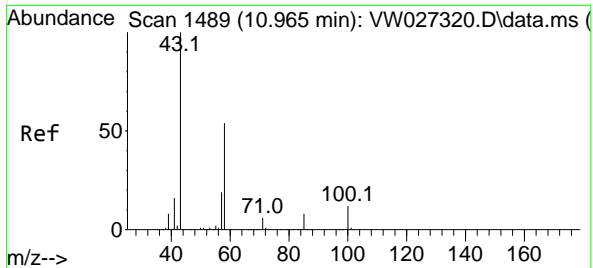


#22  
 2-Butanone  
 Concen: 6.571 ug/L  
 RT: 7.142 min Scan# 862  
 Delta R.T. -0.024 min  
 Lab File: VW027330.D  
 Acq: 18 Oct 2023 17:43



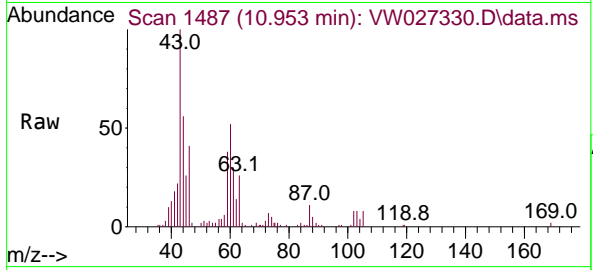
Tgt Ion: 43 Resp: 23886  
 Ion Ratio Lower Upper  
 43 100  
 72 1.2 12.3 36.8#





#48  
 2-Hexanone  
 Concen: 2.935 ug/L  
 RT: 10.953 min Scan# 14  
 Delta R.T. -0.012 min  
 Lab File: VW027330.D  
 Acq: 18 Oct 2023 17:43

Instrument : MSVOA\_W  
 ClientSampleId :



Tgt Ion: 43 Resp: 10871

Ion	Ratio	Lower	Upper
43	100		
58	0.0	42.2	63.4#
57	1.1	15.1	22.7#
100	0.6	9.0	13.4#

