

Data Path : Z:\voasrv\HPCHEM1\MSVOA_W\Data\VW101824\
 Data File : VW030655.D
 Acq On : 18 Oct 2024 11:22
 Operator : SY/MD
 Sample : P4414-24
 Misc : 4.87g/10mL/MSVOA_W/SOIL/A
 ALS Vial : 5 Sample Multiplier: 1

Instrument :
 MSVOA_W
 ClientSampleId :

Quant Time: Oct 19 00:25:10 2024
 Quant Method : Z:\voasrv\HPCHEM1\MSVOA_W\Method\SFAMWLM100924SMA.M
 Quant Title : SFAM01.0
 QLast Update : Sat Oct 19 00:23:37 2024
 Response via : Initial Calibration

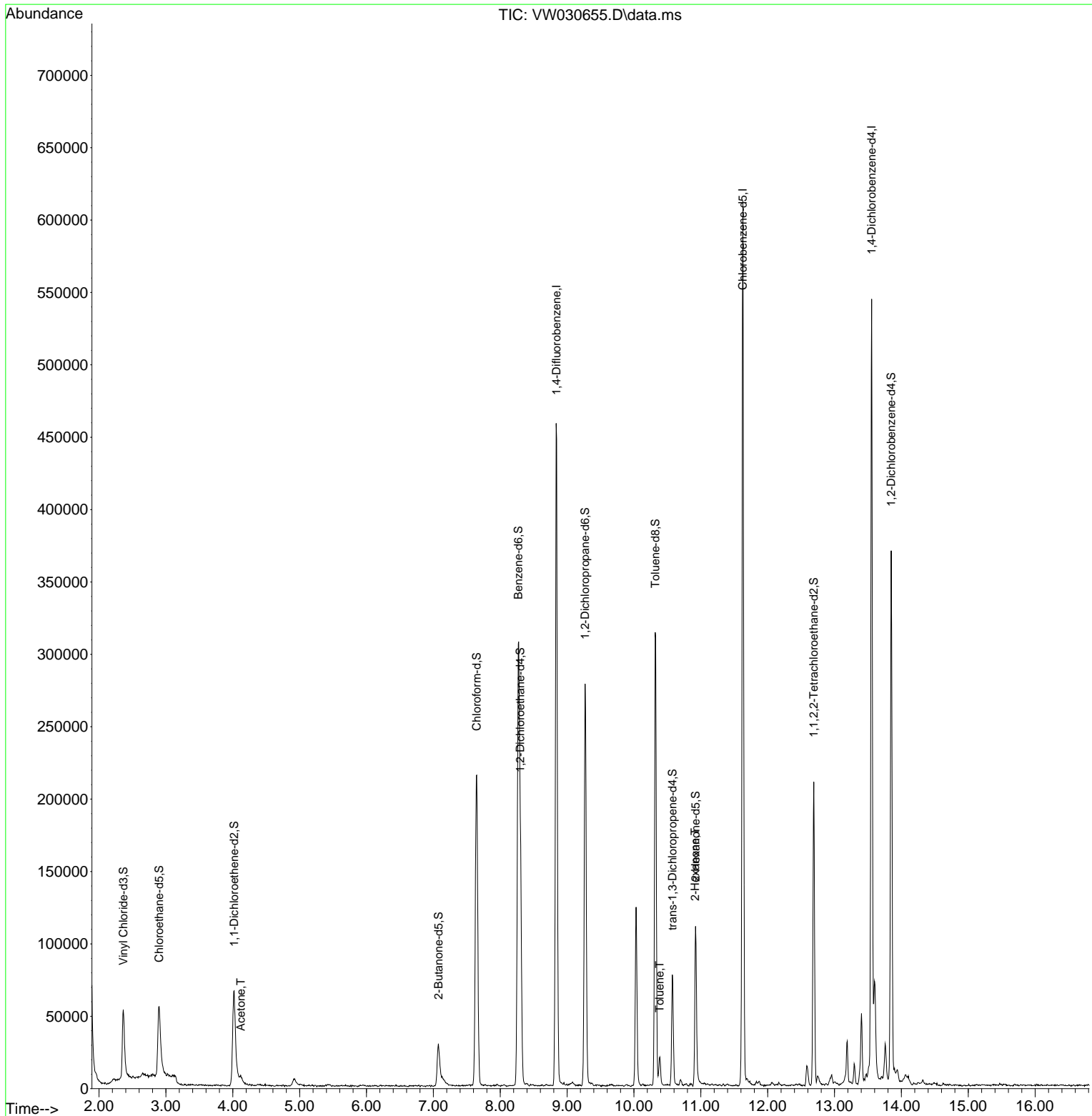
Compound	R.T.	QIon	Response	Conc	Units	Dev(Min)
Internal Standards						
1) 1,4-Difluorobenzene	8.843	114	359438	25.000	ug/L	0.00
28) Chlorobenzene-d5	11.629	117	307138	25.000	ug/L	0.00
58) 1,4-Dichlorobenzene-d4	13.556	152	129394	25.000	ug/L	0.00
System Monitoring Compounds						
4) Vinyl Chloride-d3	2.363	65	73470	13.004	ug/L	0.00
Spiked Amount	25.000	Range 30 - 150	Recovery	=	52.000%	
7) Chloroethane-d5	2.899	69	78710	18.404	ug/L	0.00
Spiked Amount	25.000	Range 30 - 150	Recovery	=	73.600%	
11) 1,1-Dichloroethene-d2	4.021	65	24360	10.366	ug/L	0.00
Spiked Amount	25.000	Range 45 - 110	Recovery	=	41.480%#	
21) 2-Butanone-d5	7.075	46	46508	45.742	ug/L	0.00
Spiked Amount	50.000	Range 20 - 135	Recovery	=	91.480%	
24) Chloroform-d	7.648	84	219451	21.349	ug/L	0.00
Spiked Amount	25.000	Range 40 - 150	Recovery	=	85.400%	
26) 1,2-Dichloroethane-d4	8.301	65	116038	21.709	ug/L	0.00
Spiked Amount	25.000	Range 70 - 130	Recovery	=	86.840%	
32) Benzene-d6	8.270	84	298069	16.721	ug/L	0.00
Spiked Amount	25.000	Range 20 - 135	Recovery	=	66.880%	
36) 1,2-Dichloropropane-d6	9.270	67	120193	22.972	ug/L	0.00
Spiked Amount	25.000	Range 70 - 120	Recovery	=	91.880%	
41) Toluene-d8	10.318	98	201160	12.361	ug/L	0.00
Spiked Amount	25.000	Range 30 - 130	Recovery	=	49.440%	
43) trans-1,3-Dichloroprop...	10.575	79	40498	18.485	ug/L	0.00
Spiked Amount	25.000	Range 30 - 135	Recovery	=	73.920%	
47) 2-Hexanone-d5	10.922	63	34845	51.706	ug/L	0.00
Spiked Amount	50.000	Range 20 - 135	Recovery	=	103.420%	
56) 1,1,2,2-Tetrachloroeth...	12.690	84	99753	25.960	ug/L	0.00
Spiked Amount	25.000	Range 45 - 120	Recovery	=	103.840%	
66) 1,2-Dichlorobenzene-d4	13.848	152	87873	20.071	ug/L	0.00
Spiked Amount	25.000	Range 75 - 120	Recovery	=	80.280%	
Target Compounds						
13) Acetone	4.118	43	6273	4.214	ug/L	100
42) Toluene	10.386	91	14142	0.663	ug/L	90
48) 2-Hexanone	10.916	43	5822	2.969	ug/L #	64

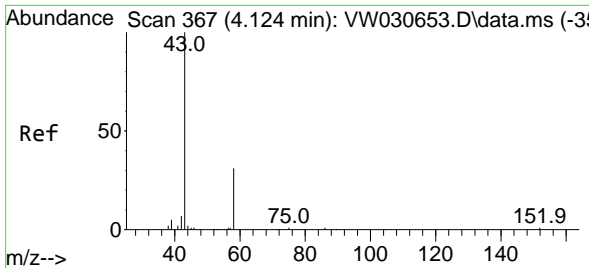
(#) = qualifier out of range (m) = manual integration (+) = signals summed

Data Path : Z:\voasrv\HPCHEM1\MSVOA_W\Data\VW101824\
 Data File : VW030655.D
 Acq On : 18 Oct 2024 11:22
 Operator : SY/MD
 Sample : P4414-24
 Misc : 4.87g/10mL/MSVOA_W/SOIL/A
 ALS Vial : 5 Sample Multiplier: 1

Instrument :
 MSVOA_W
 ClientSampleId :

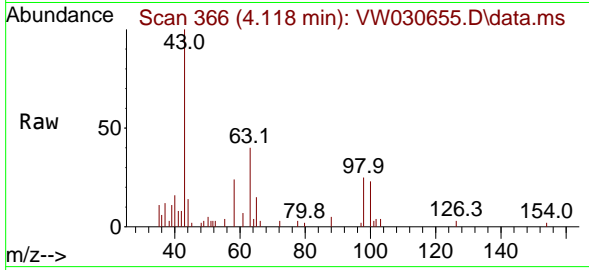
Quant Time: Oct 19 00:25:10 2024
 Quant Method : Z:\voasrv\HPCHEM1\MSVOA_W\Method\SFAMWLM100924SMA.M
 Quant Title : SFAM01.0
 QLast Update : Sat Oct 19 00:23:37 2024
 Response via : Initial Calibration



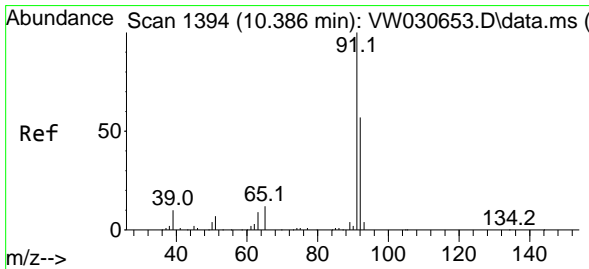
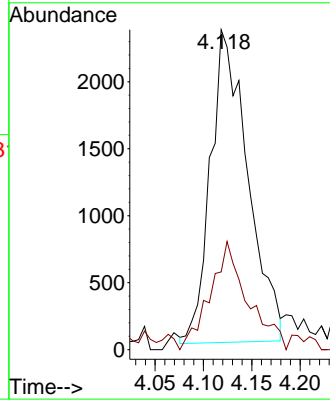
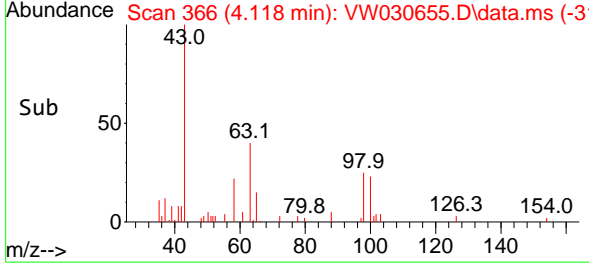


#13
 Acetone
 Concen: 4.214 ug/L
 RT: 4.118 min Scan# 366
 Delta R.T. -0.006 min
 Lab File: VW030655.D
 Acq: 18 Oct 2024 11:22

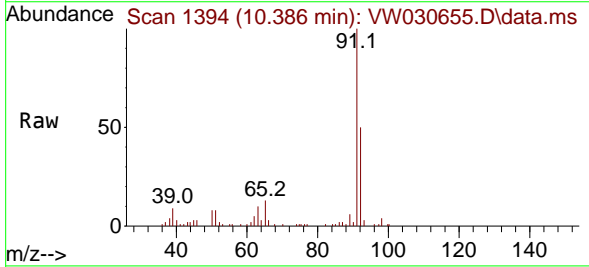
Instrument : MSVOA_W
 ClientSampleId :



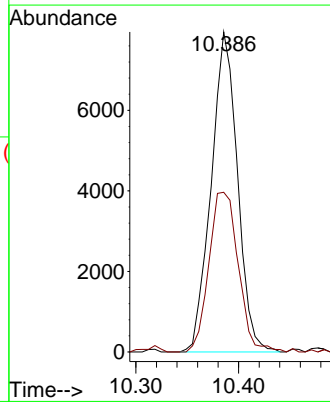
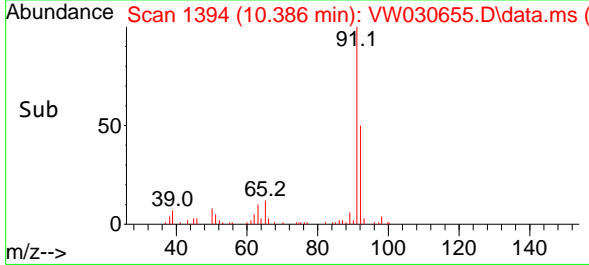
Tgt Ion: 43 Resp: 6273
 Ion Ratio Lower Upper
 43 100
 58 28.6 0.0 57.6

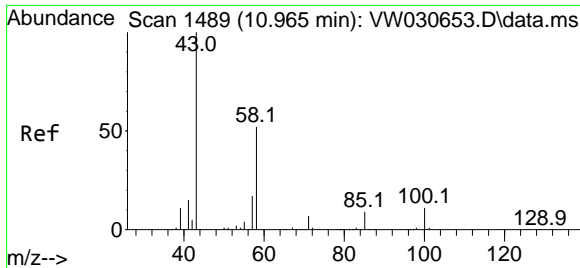


#42
 Toluene
 Concen: 0.663 ug/L
 RT: 10.386 min Scan# 1394
 Delta R.T. 0.000 min
 Lab File: VW030655.D
 Acq: 18 Oct 2024 11:22



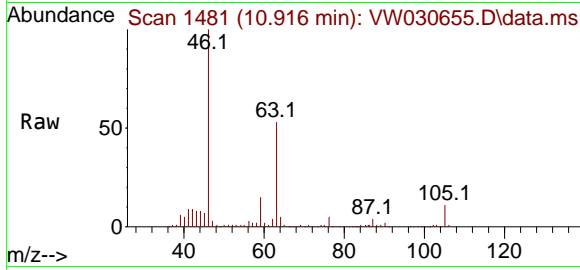
Tgt Ion: 91 Resp: 14142
 Ion Ratio Lower Upper
 91 100
 92 49.9 40.3 74.8





#48
 2-Hexanone
 Concen: 2.969 ug/L
 RT: 10.916 min Scan# 14
 Delta R.T. -0.049 min
 Lab File: VW030655.D
 Acq: 18 Oct 2024 11:22

Instrument : MSVOA_W
 ClientSampleId :



Tgt Ion: 43 Resp: 5822

Ion	Ratio	Lower	Upper
43	100		
58	28.2	44.6	67.0#
57	36.2	15.8	23.8#
100	2.9	10.2	15.2#

