

Data Path : Z:\voasrv\HPCHEM1\MSVOA\_W\Data\VW101824\  
 Data File : VW030660.D  
 Acq On : 18 Oct 2024 13:23  
 Operator : SY/MD  
 Sample : VIBLK549  
 Misc : 5.00g/10mL/MSVOA\_W/SOIL  
 ALS Vial : 10 Sample Multiplier: 1

Instrument :  
 MSVOA\_W  
 ClientSampleId :  
 VIBLK549

Integration Parameters: LSCINT.P

Integrator: RTE  
 Smoothing : OFF  
 Sampling : 1  
 Start Thrs : 0.2  
 Stop Thrs : 0

Filtering: 5  
 Min Area: 0 % of largest Peak  
 Max Peaks: 100  
 Peak Location: TOP

If leading or trailing edge < 100 prefer < Baseline drop else tangent >  
 Peak separation: 5

Method : Z:\voasrv\HPCHEM1\MSVOA\_W\Method\SFAMWLM100924SMA.M  
 Title : SFAM01.0

Signal : TIC: VW030660.D\data.ms

peak #	R.T. min	first scan	max scan	last scan	PK TY	peak height	corr. area	corr. % max.	% of total
1	2.363	73	78	91	rVB	43468	108726	11.40%	1.518%
2	2.893	160	165	181	rVB	42420	119488	12.53%	1.668%
3	3.454	255	257	260	rBV4	862	737	0.08%	0.010%
4	3.497	262	264	266	rBV3	1007	744	0.08%	0.010%
5	3.637	285	287	288	rBV	721	637	0.07%	0.009%
6	3.686	292	295	296	rBV3	789	620	0.07%	0.009%
7	3.917	331	333	337	rVB4	1317	1354	0.14%	0.019%
8	4.015	337	349	367	rBV	85132	290688	30.49%	4.059%
9	4.356	403	405	406	rBV2	742	578	0.06%	0.008%
10	4.375	406	408	410	rVV2	585	582	0.06%	0.008%
11	4.612	445	447	449	rBV3	881	658	0.07%	0.009%
12	4.698	459	461	463	rBV2	935	860	0.09%	0.012%
13	4.789	474	476	478	rBV2	573	575	0.06%	0.008%
14	4.807	478	479	484	rBV4	791	913	0.10%	0.013%
15	4.917	486	497	502	rBV10	3768	12671	1.33%	0.177%
16	5.405	574	577	579	rBV4	1163	1716	0.18%	0.024%
17	5.496	589	592	596	rVB5	583	982	0.10%	0.014%
18	5.765	634	636	640	rBV5	736	1176	0.12%	0.016%
19	5.929	655	663	664	rBV6	3314	5471	0.57%	0.076%
20	6.136	694	697	699	rBV4	859	801	0.08%	0.011%
21	6.216	708	710	711	rVV	932	664	0.07%	0.009%
22	6.271	718	719	726	rVB5	747	871	0.09%	0.012%
23	6.368	734	735	738	rBV3	777	721	0.08%	0.010%
24	6.423	742	744	748	rVB4	829	776	0.08%	0.011%
25	6.472	750	752	753	rBV2	806	704	0.07%	0.010%
26	6.539	761	763	764	rVB2	920	666	0.07%	0.009%
27	6.630	775	778	779	rBV2	829	665	0.07%	0.009%
28	6.716	789	792	793	rVV3	701	590	0.06%	0.008%
29	6.831	809	811	813	rBV2	897	732	0.08%	0.010%
30	6.905	820	823	826	rBV4	1006	1762	0.18%	0.025%
31	7.081	838	852	857	rBV	25217	70333	7.38%	0.982%
32	7.344	894	895	897	rBV2	691	706	0.07%	0.010%
33	7.648	934	945	958	rBV	172867	432131	45.32%	6.034%
34	7.770	963	965	966	rBV2	980	667	0.07%	0.009%
35	8.039	1007	1009	1010	rBV	935	750	0.08%	0.010%
36	8.081	1015	1016	1019	rBV3	1029	1045	0.11%	0.015%

Data Path : Z:\voasrv\HPCHEM1\MSVOA\_W\Data\VW101824\  
 Data File : VW030660.D  
 Acq On : 18 Oct 2024 13:23  
 Operator : SY/MD  
 Sample : VIBLK549  
 Misc : 5.00g/10mL/MSVOA\_W/SOIL  
 ALS Vial : 10 Sample Multiplier: 1

Instrument :  
 MSVOA\_W  
 ClientSampleId :  
 VIBLK549

Integration Parameters: LSCINT.P

Integrator: RTE  
 Smoothing : OFF  
 Sampling : 1  
 Start Thrs : 0.2  
 Stop Thrs : 0

Filtering: 5  
 Min Area: 0 % of largest Peak  
 Max Peaks: 100  
 Peak Location: TOP

If leading or trailing edge < 100 prefer < Baseline drop else tangent >  
 Peak separation: 5

Method : Z:\voasrv\HPCHEM1\MSVOA\_W\Method\SFAMWLM100924SMA.M  
 Title : SFAM01.0

37	8.276	1037	1048	1064	rVV2	315416	953479	100.00%	13.314%
38	8.514	1085	1087	1090	rVB4	830	590	0.06%	0.008%
39	8.721	1120	1121	1126	rVB4	896	942	0.10%	0.013%
40	8.843	1132	1141	1151	rBV	317714	649602	68.13%	9.071%
41	9.045	1171	1174	1176	rBV4	1314	1365	0.14%	0.019%
42	9.075	1176	1179	1180	rBV3	1598	2090	0.22%	0.029%
43	9.154	1189	1192	1195	rBV5	668	927	0.10%	0.013%
44	9.270	1199	1211	1221	rBV	229410	472640	49.57%	6.600%
45	9.477	1243	1245	1248	rVB2	727	653	0.07%	0.009%
46	9.575	1258	1261	1264	rBV5	860	1043	0.11%	0.015%
47	9.770	1292	1293	1297	rVB4	963	999	0.10%	0.014%
48	9.807	1297	1299	1302	rBV4	694	872	0.09%	0.012%
49	9.874	1308	1310	1312	rBV3	657	776	0.08%	0.011%
50	9.941	1319	1321	1323	rVB3	720	603	0.06%	0.008%
51	9.977	1323	1327	1329	rBV4	1788	2635	0.28%	0.037%
52	10.032	1329	1336	1349	rVV	108411	203182	21.31%	2.837%
53	10.319	1376	1383	1392	rBV	433884	760421	79.75%	10.618%
54	10.575	1416	1425	1435	rVV	72116	132016	13.85%	1.843%
55	10.697	1440	1445	1451	rVB	29739	53324	5.59%	0.745%
56	10.843	1465	1469	1470	rBV2	2625	3054	0.32%	0.043%
57	10.922	1476	1482	1496	rBV	95506	171611	18.00%	2.396%
58	11.056	1499	1504	1513	rVV	14154	26761	2.81%	0.374%
59	11.489	1574	1575	1580	rVB4	718	851	0.09%	0.012%
60	11.532	1580	1582	1583	rBV2	1110	998	0.10%	0.014%
61	11.629	1591	1598	1607	rBV	482085	815402	85.52%	11.386%
62	11.794	1623	1625	1626	rBV2	1010	648	0.07%	0.009%
63	11.837	1628	1632	1643	rVB2	2486	6674	0.70%	0.093%
64	11.965	1649	1653	1655	rVB4	1049	1253	0.13%	0.017%
65	12.026	1660	1663	1666	rVV5	746	1037	0.11%	0.014%
66	12.056	1666	1668	1674	rVB5	1215	1638	0.17%	0.023%
67	12.117	1674	1678	1681	rBV5	1177	2357	0.25%	0.033%
68	12.166	1681	1686	1694	rVB5	3427	7945	0.83%	0.111%
69	12.239	1694	1698	1700	rBV4	656	804	0.08%	0.011%
70	12.471	1730	1736	1742	rBV9	3639	7680	0.81%	0.107%
71	12.519	1742	1744	1746	rBV3	845	590	0.06%	0.008%
72	12.599	1751	1757	1764	rBV	20631	36064	3.78%	0.504%
73	12.690	1765	1772	1780	rVV	173467	295984	31.04%	4.133%
74	12.934	1808	1812	1818	rVB7	3711	6091	0.64%	0.085%
75	12.983	1818	1820	1825	rBV4	748	1332	0.14%	0.019%
76	13.074	1831	1835	1841	rVB6	1016	2050	0.22%	0.029%

Data Path : Z:\voasrv\HPCHEM1\MSVOA\_W\Data\VW101824\  
 Data File : VW030660.D  
 Acq On : 18 Oct 2024 13:23  
 Operator : SY/MD  
 Sample : VIBLK549  
 Misc : 5.00g/10mL/MSVOA\_W/SOIL  
 ALS Vial : 10 Sample Multiplier: 1

Instrument :  
 MSVOA\_W  
 ClientSampleId :  
 VIBLK549

Integration Parameters: LSCINT.P

Integrator: RTE  
 Smoothing : OFF Filtering: 5  
 Sampling : 1 Min Area: 0 % of largest Peak  
 Start Thrs: 0.2 Max Peaks: 100  
 Stop Thrs : 0 Peak Location: TOP

If leading or trailing edge < 100 prefer < Baseline drop else tangent >  
 Peak separation: 5

Method : Z:\voasrv\HPCHEM1\MSVOA\_W\Method\SFAMWLM100924SMA.M  
 Title : SFAM01.0

77	13.123	1841	1843	1844	rBV2	657	552	0.06%	0.008%
78	13.245	1858	1863	1867	rBV7	1834	3630	0.38%	0.051%
79	13.355	1879	1881	1882	rBV2	783	613	0.06%	0.009%
80	13.495	1897	1904	1907	rBV7	5650	10947	1.15%	0.153%
81	13.556	1907	1914	1927	rVB	447693	724625	76.00%	10.118%
82	13.720	1939	1941	1942	rBV2	748	685	0.07%	0.010%
83	13.849	1955	1962	1970	rBV	398515	656216	68.82%	9.163%
84	14.007	1985	1988	1991	rBV5	1218	2105	0.22%	0.029%
85	14.062	1993	1997	2002	rVB	11493	18100	1.90%	0.253%
86	14.318	2035	2039	2040	rBV4	1969	2659	0.28%	0.037%
87	14.415	2053	2055	2056	rBV2	937	657	0.07%	0.009%
88	14.623	2086	2089	2095	rVB5	2458	4454	0.47%	0.062%
89	14.897	2130	2134	2136	rBV4	916	1332	0.14%	0.019%
90	14.989	2145	2149	2150	rBV3	923	1164	0.12%	0.016%
91	15.202	2182	2184	2185	rBV2	883	769	0.08%	0.011%
92	15.360	2205	2210	2217	rBV2	9005	17116	1.80%	0.239%
93	15.428	2217	2221	2226	rVB	9876	15149	1.59%	0.212%
94	15.543	2238	2240	2246	rVV7	1890	2586	0.27%	0.036%
95	15.751	2272	2274	2276	rBV3	1335	1187	0.12%	0.017%
96	16.074	2324	2327	2331	rVB6	983	1291	0.14%	0.018%
97	16.116	2332	2334	2337	rBV4	811	739	0.08%	0.010%
98	16.214	2348	2350	2352	rBV3	1143	784	0.08%	0.011%
99	16.500	2396	2397	2400	rBV3	851	692	0.07%	0.010%
100	16.610	2412	2415	2417	rBV4	669	803	0.08%	0.011%

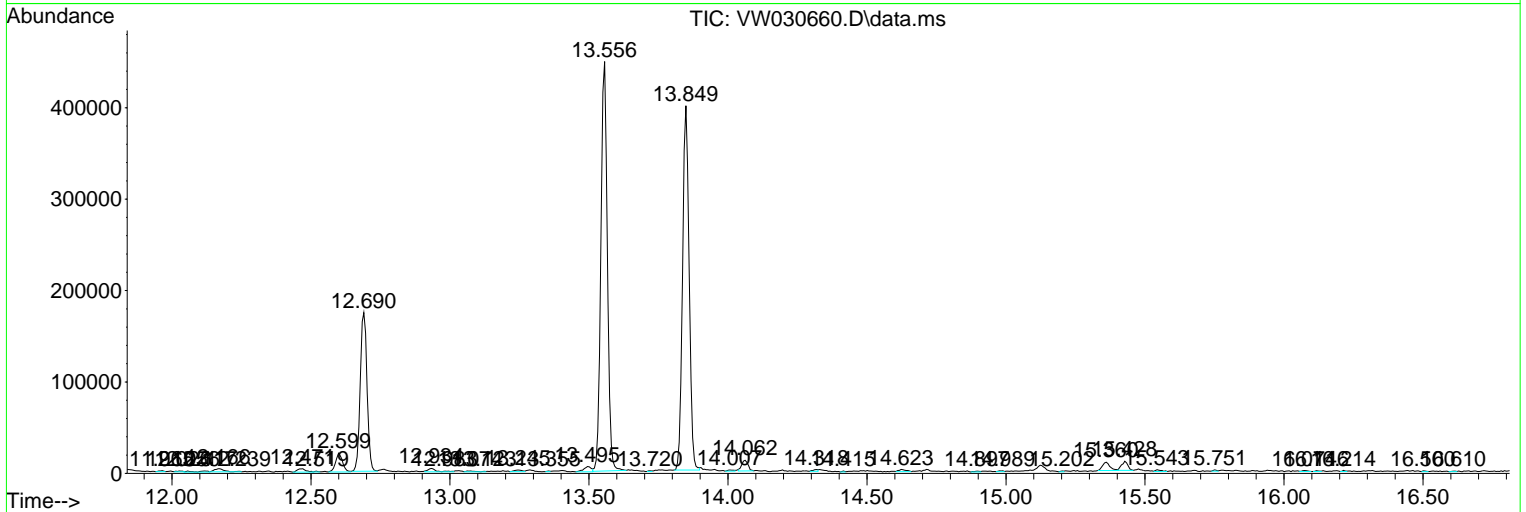
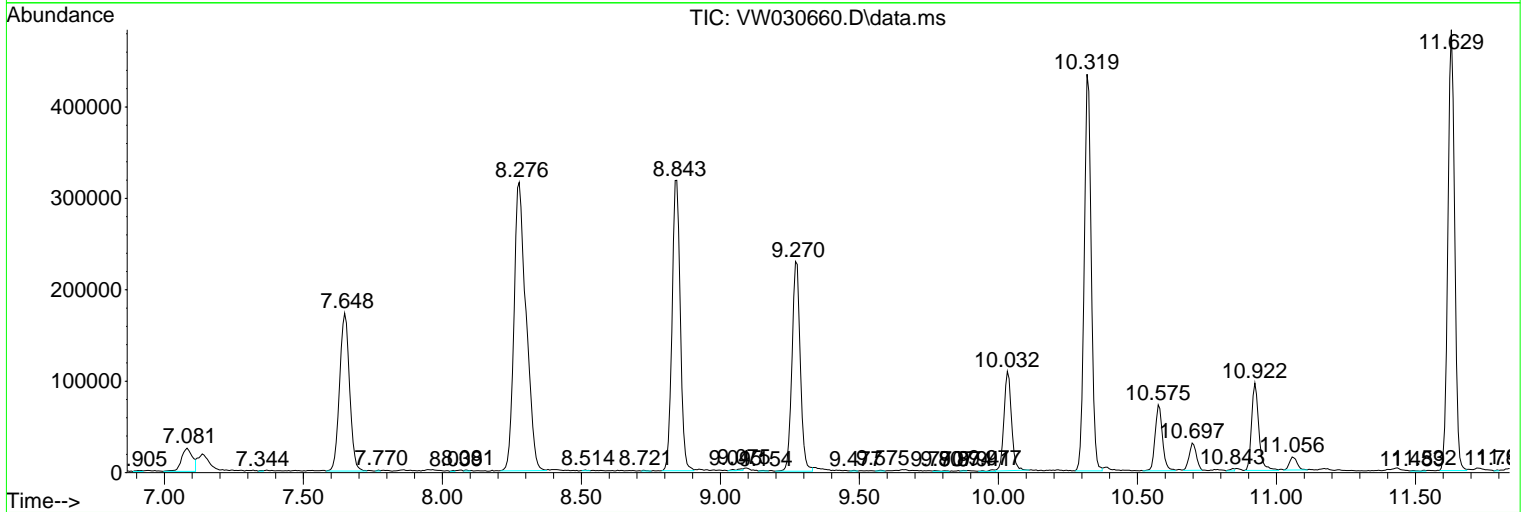
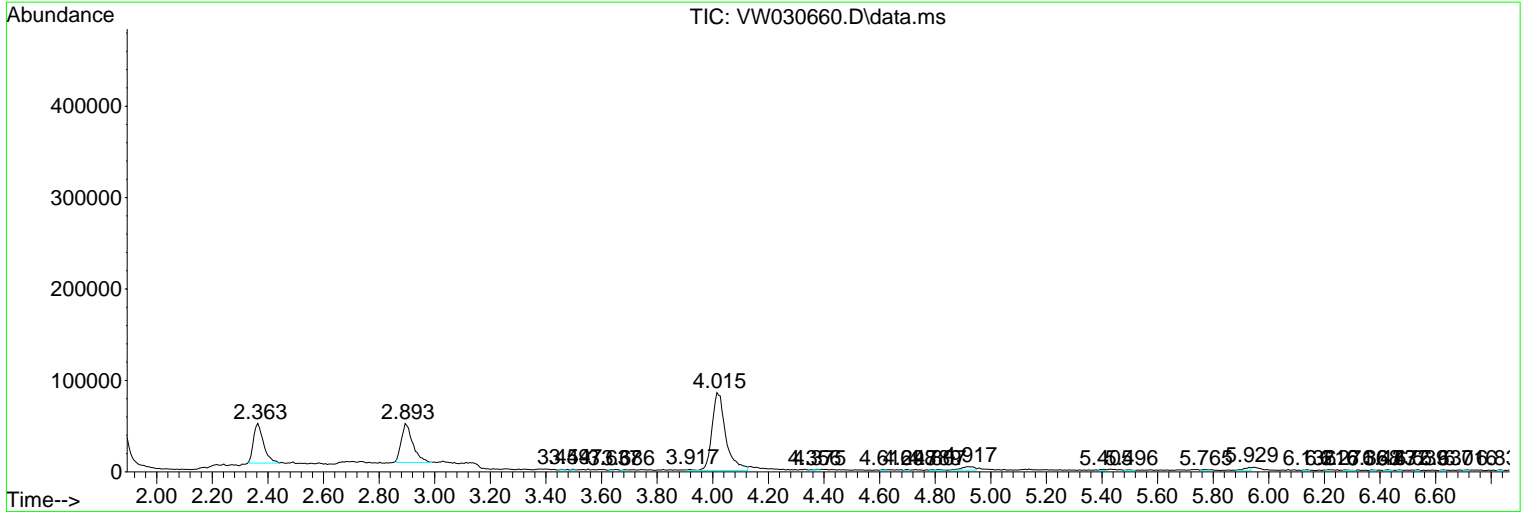
Sum of corrected areas: 7161598

Data Path : Z:\voasrv\HPCHEM1\MSVOA\_W\Data\VW101824\  
 Data File : VW030660.D  
 Acq On : 18 Oct 2024 13:23  
 Operator : SY/MD  
 Sample : VIBLK549  
 Misc : 5.00g/10mL/MSVOA\_W/SOIL  
 ALS Vial : 10 Sample Multiplier: 1

Instrument :  
 MSVOA\_W  
 ClientSampleId :  
 VIBLK549

Quant Method : Z:\voasrv\HPCHEM1\MSVOA\_W\Method\SFAMWLM100924SMA.M  
 Quant Title : SFAM01.0

TIC Library : C:\Database\NIST20.L  
 TIC Integration Parameters: LSCINT.P



Library Search Compound Report

Data Path : Z:\voasrv\HPCHEM1\MSVOA\_W\Data\VW101824\  
Data File : VW030660.D  
Acq On : 18 Oct 2024 13:23  
Operator : SY/MD  
Sample : VIBLK549  
Misc : 5.00g/10mL/MSVOA\_W/SOIL  
ALS Vial : 10 Sample Multiplier: 1

Instrument :  
MSVOA\_W  
ClientSampleId :  
VIBLK549

Quant Method : Z:\voasrv\HPCHEM1\MSVOA\_W\Method\SFAMWLM100924SMA.M  
Quant Title : SFAM01.0

TIC Library : C:\Database\NIST20.L  
TIC Integration Parameters: LSCINT.P

No Library Search Compounds Detected

\*\*\*\*\*

Data Path : Z:\voasrv\HPCHEM1\MSVOA\_W\Data\VW101824\  
Data File : VW030660.D  
Acq On : 18 Oct 2024 13:23  
Operator : SY/MD  
Sample : VIBLK549  
Misc : 5.00g/10mL/MSVOA\_W/SOIL  
ALS Vial : 10 Sample Multiplier: 1

Instrument :  
MSVOA\_W  
ClientSampleId :  
VIBLK549

Quant Method : Z:\voasrv\HPCHEM1\MSVOA\_W\Method\SFAMWLM100924SMA.M  
Quant Title : SFAM01.0

TIC Library : C:\Database\NIST0.L  
TIC Integration Parameters: LSCINT.P

TIC Top Hit name	RT	EstConc	Units	Response	#	RT	Resp	Conc
------------------	----	---------	-------	----------	---	----	------	------

---