

Data Path : Z:\VOASRV\HPCHEM1\MSVOA W\DATA\VW103119\
 Data File : VW013876.D
 Acq On : 31 Oct 2019 23:28
 Operator : SY/VA
 Sample : VSTDCCC025
 Misc : 5.00G/10ML/MSVOA W/SOIL
 ALS Vial : 1 Sample Multiplier: 1

Instrument :
 MSVOA_W
 ClientSampled :

Quant Time: Nov 01 05:51:16 2019
 Quant Method : Z:\VOASRV\HPCHEM1\MSVOA_W\METHOD\SOM2WLM103119S.M
 Quant Title : VOC Analysis
 QLast Update : Fri Nov 01 02:10:29 2019
 Response via : Initial Calibration

Internal Standards	R.T.	QIon	Response	Conc	Units	Dev(Min)
1) 1,4-Difluorobenzene	8.84	114	306088	25.00	ug/L	0.00
28) Chlorobenzene-d5	11.63	117	305531	25.00	ug/L	0.00
60) 1,4-Dichlorobenzene-d4	13.56	152	185458	25.00	ug/L	0.00

System Monitoring Compounds

4) Vinyl Chloride-d3	2.36	65	105804	22.70	ug/L	0.00
Spiked Amount	25.000	Range	30 - 150	Recovery	=	90.80%
7) Chloroethane-d5	2.89	69	85206	23.37	ug/L	0.00
Spiked Amount	25.000	Range	30 - 150	Recovery	=	93.48%
10) 1,1-Dichloroethene-d2	4.03	63	211284	22.66	ug/L	0.00
Spiked Amount	25.000	Range	45 - 110	Recovery	=	90.64%
20) 2-Butanone-d5	7.07	46	87525	53.44	ug/L	0.00
Spiked Amount	50.000	Range	20 - 135	Recovery	=	106.88%
24) Chloroform-d	7.65	84	228907	24.44	ug/L	0.00
Spiked Amount	25.000	Range	40 - 150	Recovery	=	97.76%
26) 1,2-Dichloroethane-d4	8.31	65	125687	24.67	ug/L	0.00
Spiked Amount	25.000	Range	70 - 130	Recovery	=	98.68%
29) Benzene-d6	8.27	84	476221	24.06	ug/L	0.00
Spiked Amount	25.000	Range	20 - 135	Recovery	=	96.24%
33) 1,2-Dichloropropane-d6	9.27	67	142548	24.03	ug/L	0.00
Spiked Amount	25.000	Range	70 - 120	Recovery	=	96.12%
37) Toluene-d8	10.32	98	452858	23.92	ug/L	0.00
Spiked Amount	25.000	Range	30 - 130	Recovery	=	95.68%
38) trans-1,3-Dichloropropene-	10.58	79	63714	23.48	ug/L	0.00
Spiked Amount	25.000	Range	30 - 135	Recovery	=	93.92%
39) 2-Hexanone-d5	10.92	63	71289	52.20	ug/L	0.00
Spiked Amount	50.000	Range	20 - 135	Recovery	=	104.40%
48) 1,1,2,2-Tetrachloroethane-	12.69	84	132616	24.59	ug/L	0.00
Spiked Amount	25.000	Range	45 - 120	Recovery	=	98.36%
61) 1,2-Dichlorobenzene-d4	13.85	152	171817	24.06	ug/L	0.00
Spiked Amount	25.000	Range	75 - 120	Recovery	=	96.24%

Target Compounds

Target Compounds	R.T.	QIon	Response	Conc	Units	Ovalue
2) Dichlorodifluoromethane	2.01	85	63879	18.875	ug/L	94
3) Chloromethane	2.21	50	79529	21.859	ug/L	98
5) Vinyl chloride	2.37	62	116197	22.526	ug/L	98
6) Bromomethane	2.78	94	75408	23.203	ug/L	100
8) Chloroethane	2.92	64	67704	23.241	ug/L	98
9) Trichlorofluoromethane	3.25	101	42946	19.093	ug/L	100
11) 1,1,2-Trichloro-1,2,2-trif	4.06	101	118288	23.407	ug/L	97
12) 1,1-Dichloroethene	4.04	96	118119	23.308	ug/L	91
13) Acetone	4.12	43	54379	35.479	ug/L	93
14) Carbon disulfide	4.39	76	347607	23.600	ug/L	97
15) Methyl Acetate	4.67	43	73166	25.926	ug/L	99
16) Methylene chloride	4.92	84	134014	22.396	ug/L	99
17) Methyl tert-butyl Ether	5.43	73	158520	25.121	ug/L #	88
18) trans-1,2-Dichloroethene	5.42	96	128956	24.294	ug/L	96
19) 1,1-Dichloroethane	6.21	63	223628	24.629	ug/L	97
21) 2-Butanone	7.17	43	101060	45.951	ug/L	97
22) cis-1,2-Dichloroethene	7.17	96	138000	24.287	ug/L	97

Data Path : Z:\VOASRV\HPCHEM1\MSVOA W\DATA\VW103119\
 Data File : VW013876.D
 Acq On : 31 Oct 2019 23:28
 Operator : SY/VA
 Sample : VSTDCCC025
 Misc : 5.00G/10ML/MSVOA W/SOIL
 ALS Vial : 1 Sample Multiplier: 1

Instrument :
 MSVOA_W
 ClientSampled :

Quant Time: Nov 01 05:51:16 2019
 Quant Method : Z:\VOASRV\HPCHEM1\MSVOA_W\METHOD\SOM2WLM103119S.M
 Quant Title : VOC Analysis
 QLast Update : Fri Nov 01 02:10:29 2019
 Response via : Initial Calibration

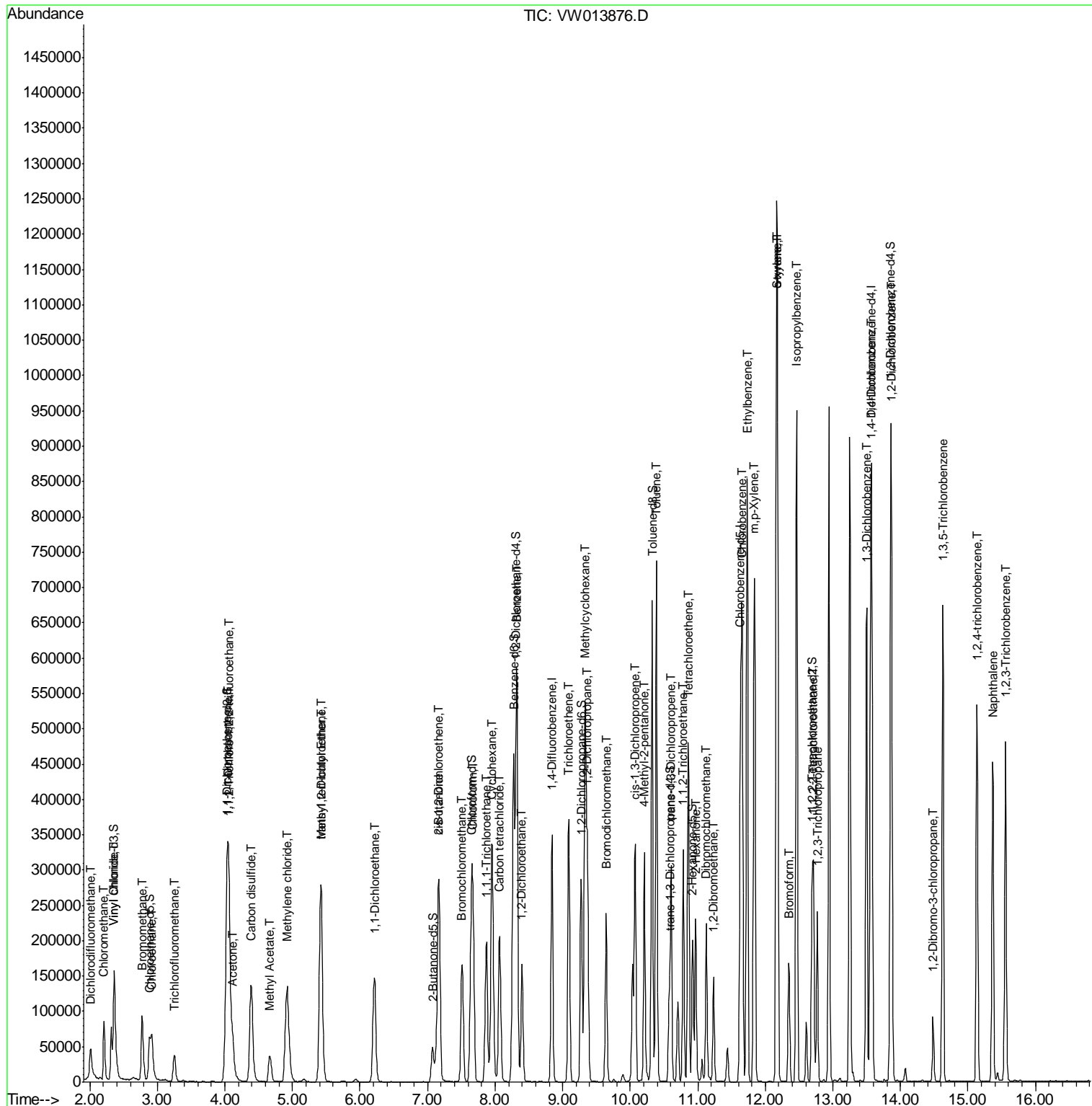
Internal Standards	R.T.	QIon	Response	Conc	Units	Dev(Min)
23) Bromochloromethane	7.51	128	67339	25.387	ug/L	97
25) Chloroform	7.67	83	223989	24.572	ug/L	99
27) 1,2-Dichloroethane	8.40	62	151902	25.336	ug/L	100
30) Cyclohexane	7.96	56	203438	23.197	ug/L	99
31) 1,1,1-Trichloroethane	7.87	97	166374	23.760	ug/L	100
32) Carbon tetrachloride	8.07	117	164028	23.533	ug/L	100
34) Benzene	8.32	78	518520	24.473	ug/L	100
35) Trichloroethene	9.09	95	133994	23.963	ug/L	98
36) Methylcyclohexane	9.34	83	230409	23.803	ug/L	100
40) 1,2-Dichloropropane	9.37	63	128752	24.599	ug/L	99
41) Bromodichloromethane	9.64	83	164659	25.049	ug/L	98
42) cis-1,3-Dichloropropene	10.07	75	201894	24.570	ug/L	99
43) 4-Methyl-2-pentanone	10.21	43	207350	51.341	ug/L	98
44) Toluene	10.39	91	564405	24.671	ug/L	99
45) trans-1,3-Dichloropropene	10.60	75	165921	24.758	ug/L	98
46) 1,1,2-Trichloroethane	10.79	97	105203	24.929	ug/L	97
47) Tetrachloroethene	10.86	164	118316	23.560	ug/L	97
49) 2-Hexanone	10.97	43	148188	51.275	ug/L	97
50) Dibromochloromethane	11.13	129	124857	25.449	ug/L	99
51) 1,2-Dibromoethane	11.23	107	102658	24.853	ug/L	97
52) Chlorobenzene	11.66	112	363834	24.524	ug/L	97
53) Ethylbenzene	11.73	91	619953	24.550	ug/L	97
54) m,p-Xylene	11.84	106	240322	24.325	ug/L	98
55) o-xylene	12.16	106	231732	24.920	ug/L	99
56) Styrene	12.18	104	404100	25.327	ug/L	98
57) Isopropylbenzene	12.46	105	617573	24.816	ug/L	99
58) 1,1,2,2-Tetrachloroethane	12.71	83	135608	25.596	ug/L	98
59) 1,2,3-Trichloropropane	12.77	75	101675	25.187	ug/L	99
62) Bromoform	12.35	173	82424	25.543	ug/L	99
63) 1,3-Dichlorobenzene	13.50	146	298494	24.660	ug/L	99
64) 1,4-Dichlorobenzene	13.58	146	296761	24.170	ug/L	99
65) 1,2-Dichlorobenzene	13.87	146	279852	25.013	ug/L	95
66) 1,2-Dibromo-3-chloropropan	14.48	75	23351	26.407	ug/L	90
67) 1,3,5-Trichlorobenzene	14.63	180	229662	24.663	ug/L	99
68) 1,2,4-trichlorobenzene	15.13	180	190422	25.495	ug/L	99
69) Naphthalene	15.36	128	402859	28.037	ug/L	99
70) 1,2,3-Trichlorobenzene	15.55	180	180864	26.190	ug/L	98

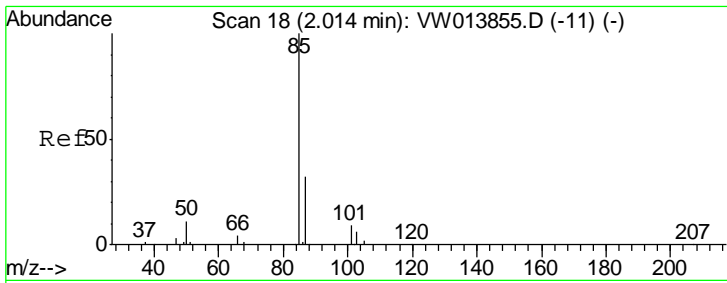
(#) = qualifier out of range (m) = manual integration (+) = signals summed

Data Path : Z:\VOASRV\HPCHEM1\MSVOA W\DATA\VW103119\
 Data File : VW013876.D
 Acq On : 31 Oct 2019 23:28
 Operator : SY/VA
 Sample : VSTDCCC025
 Misc : 5.00G/10ML/MSVOA W/SOIL
 ALS Vial : 1 Sample Multiplier: 1

Instrument :
 MSVOA_W
 Client Sampled :

Quant Time: Nov 01 05:51:16 2019
 Quant Method : Z:\VOASRV\HPCHEM1\MSVOA_W\METHOD\SOM2WLM103119S.M
 Quant Title : VOC Analysis
 QLast Update : Fri Nov 01 02:10:29 2019
 Response via : Initial Calibration

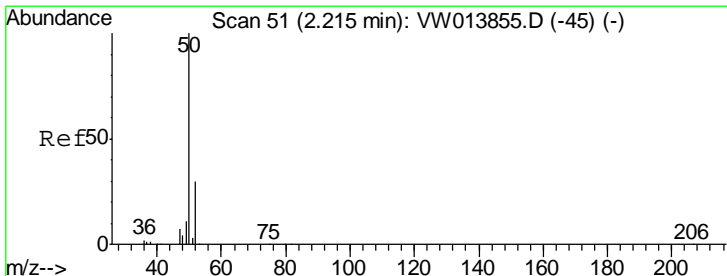
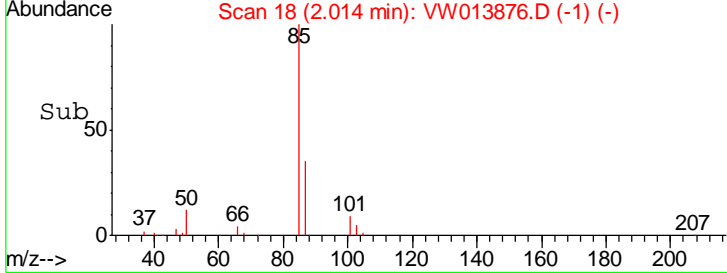
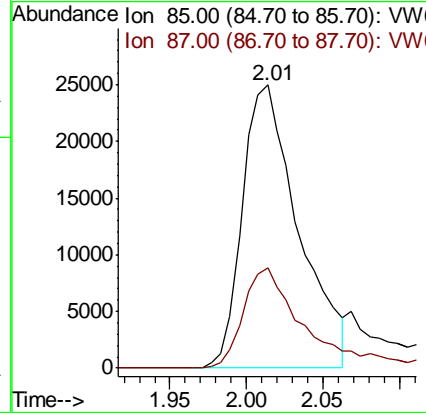
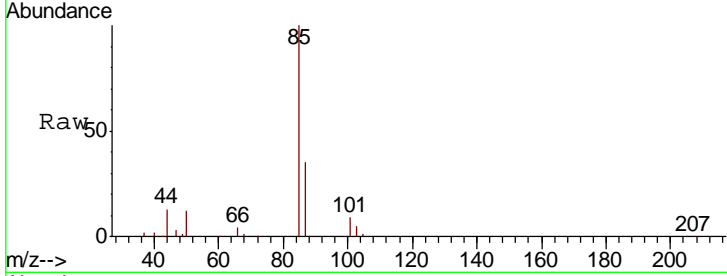




#2
 Dichlorodifluoromethane
 Concen: 18.875 ug/L
 RT: 2.01 min Scan# 18
 Delta R.T. 0.00 min
 Lab File: VW013876.D
 Acq: 31 Oct 2019 23:28

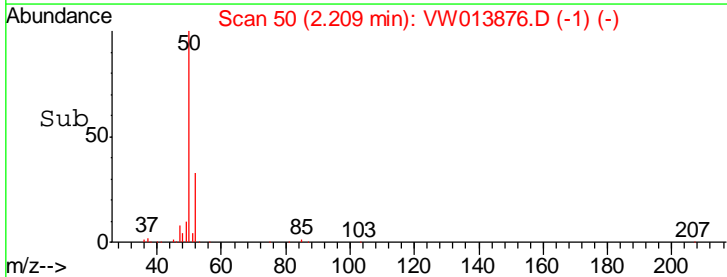
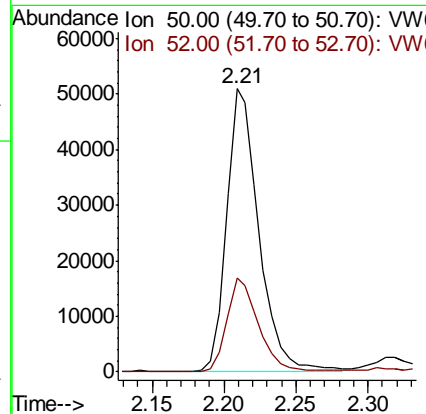
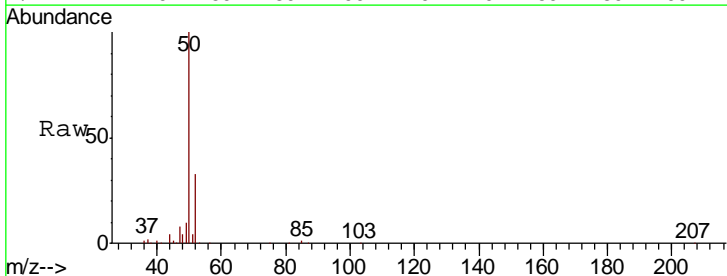
Instrument :
 MSVOA_W
 ClientSampled :

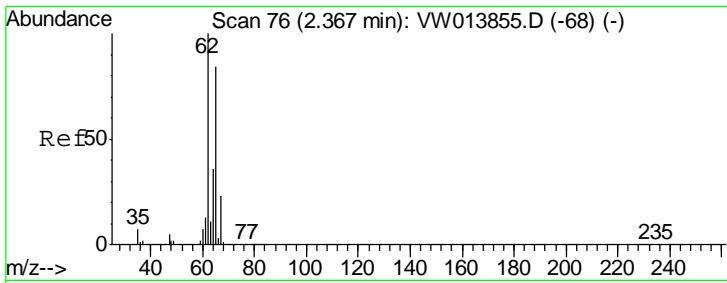
Tgt Ion: 85 Resp: 63879
 Ion Ratio Lower Upper
 85 100
 87 35.7 22.5 41.7



#3
 Chloromethane
 Concen: 21.859 ug/L
 RT: 2.21 min Scan# 50
 Delta R.T. -0.01 min
 Lab File: VW013876.D
 Acq: 31 Oct 2019 23:28

Tgt Ion: 50 Resp: 79529
 Ion Ratio Lower Upper
 50 100
 52 33.2 22.5 41.9

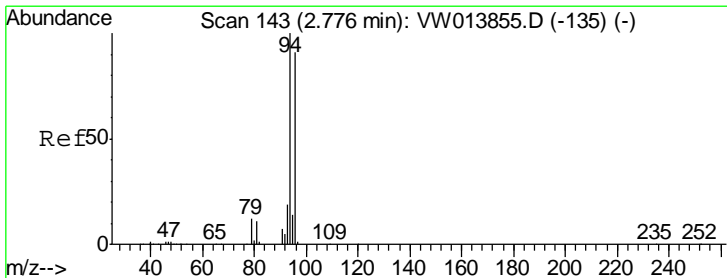
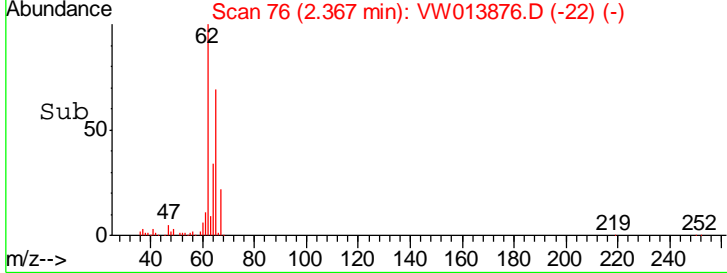
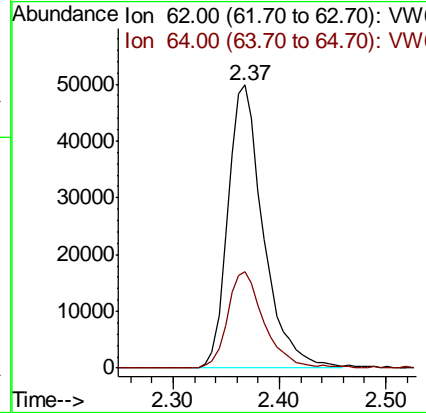
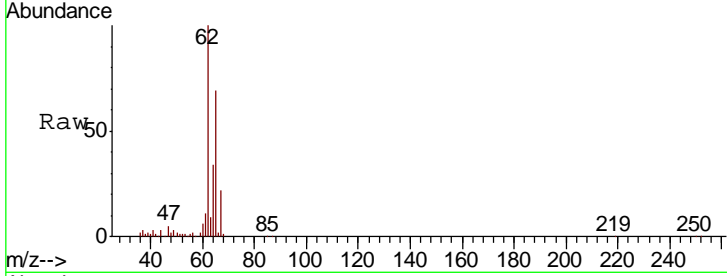




#5
 Vinyl chloride
 Concen: 22.526 ug/L
 RT: 2.37 min Scan# 76
 Delta R.T. 0.00 min
 Lab File: VW013876.D
 Acq: 31 Oct 2019 23:28

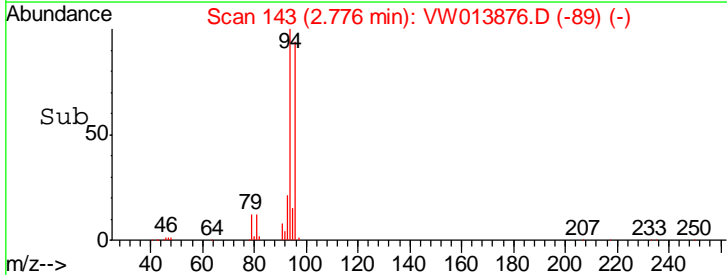
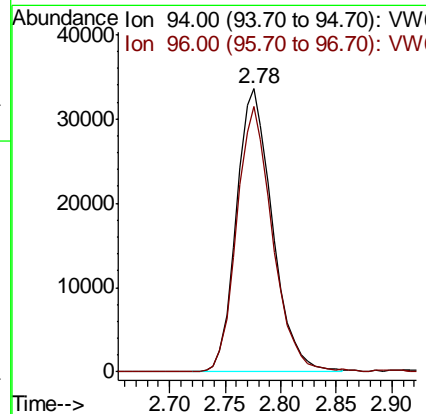
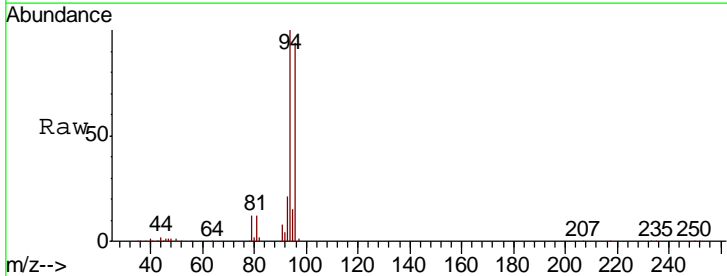
Instrument :
 MSVOA_W
 ClientSampled :

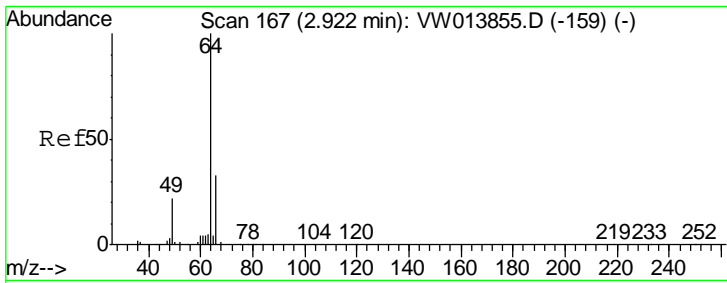
Tgt Ion: 62 Resp: 116197
 Ion Ratio Lower Upper
 62 100
 64 34.2 23.3 43.3



#6
 Bromomethane
 Concen: 23.203 ug/L
 RT: 2.78 min Scan# 143
 Delta R.T. 0.00 min
 Lab File: VW013876.D
 Acq: 31 Oct 2019 23:28

Tgt Ion: 94 Resp: 75408
 Ion Ratio Lower Upper
 94 100
 96 92.9 9.3 177.3

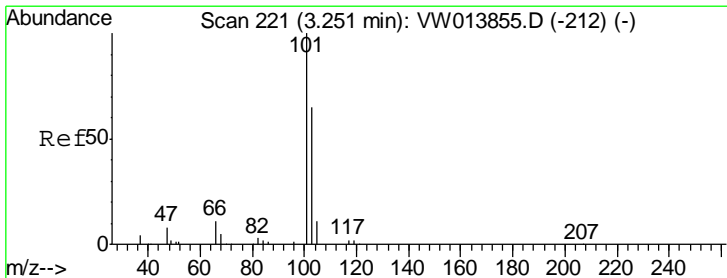
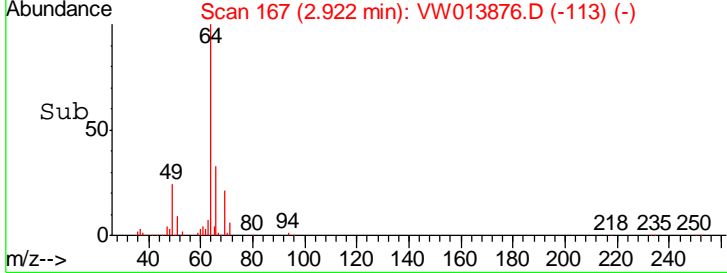
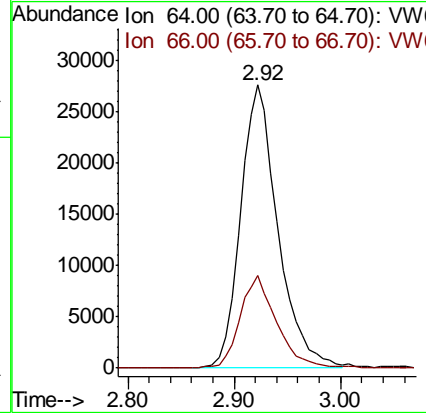
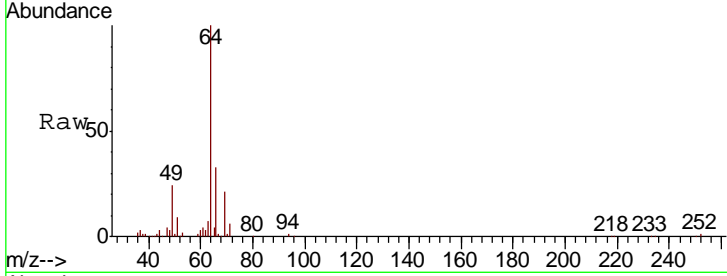




#8
 Chloroethane
 Concen: 23.241 ug/L
 RT: 2.92 min Scan# 167
 Delta R.T. 0.00 min
 Lab File: VW013876.D
 Acq: 31 Oct 2019 23:28

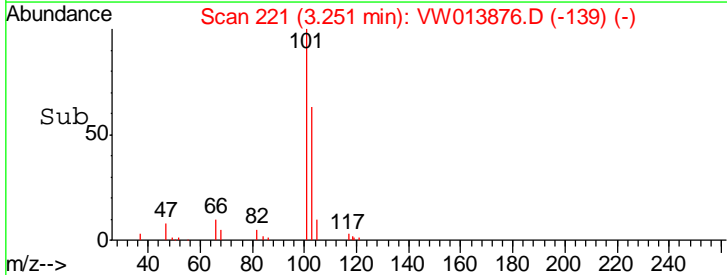
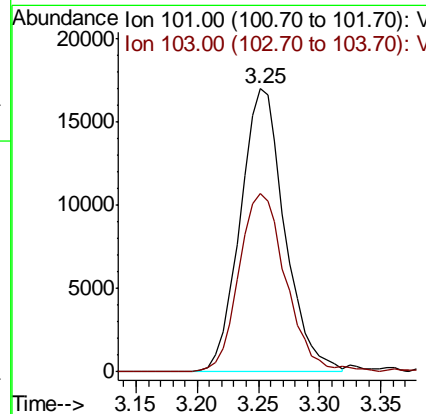
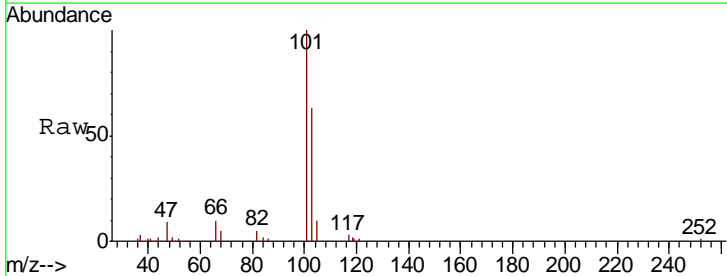
Instrument :
 MSVOA_W
 ClientSampled :

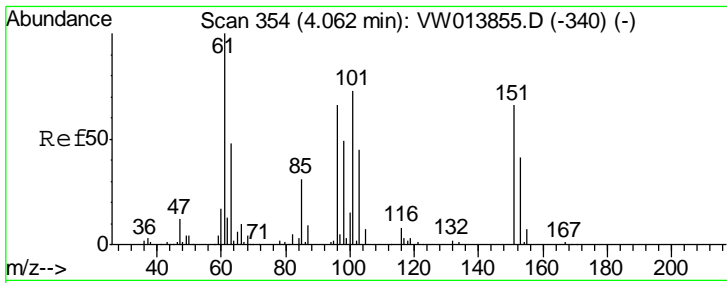
Tgt Ion: 64 Resp: 67704
 Ion Ratio Lower Upper
 64 100
 66 32.7 22.0 41.0



#9
 Trichlorofluoromethane
 Concen: 19.093 ug/L
 RT: 3.25 min Scan# 221
 Delta R.T. 0.00 min
 Lab File: VW013876.D
 Acq: 31 Oct 2019 23:28

Tgt Ion: 101 Resp: 42946
 Ion Ratio Lower Upper
 101 100
 103 65.7 45.8 85.0





#11

1,1,2-Trichloro-1,2,2-trifluoroethane

Concen: 23.407 ug/L

RT: 4.06 min Scan# 354

Delta R.T. 0.00 min

Lab File: VW013876.D

Acq: 31 Oct 2019 23:28

Instrument :
MSVOA_W
ClientSampled :

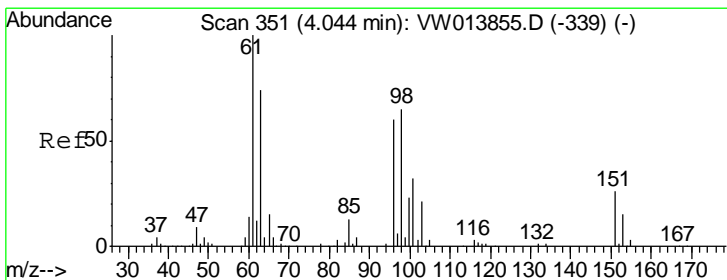
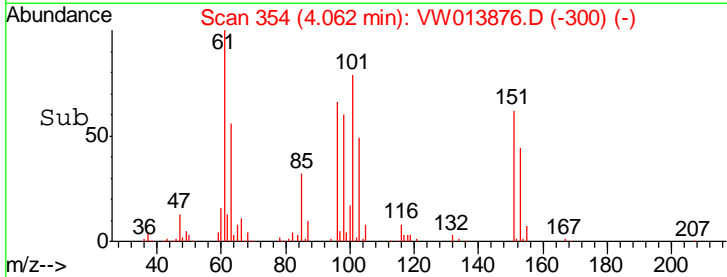
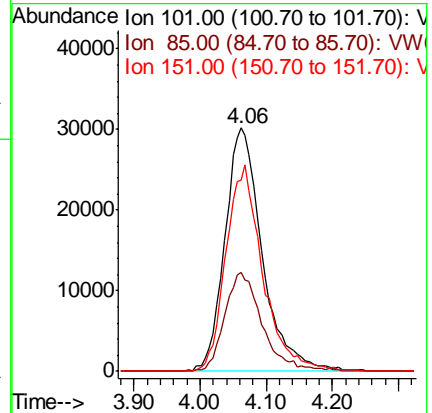
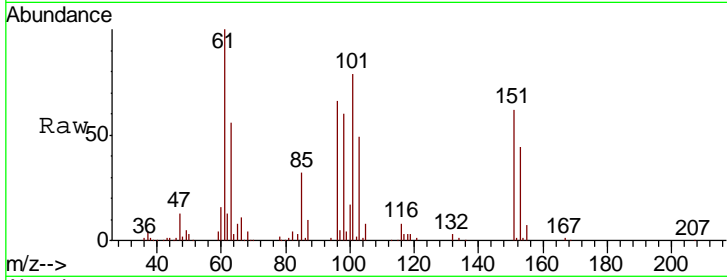
Tgt Ion: 101 Resp: 118288

Ion Ratio Lower Upper

101 100

85 38.8 32.6 48.8

151 83.2 68.2 102.4



#12

1,1-Dichloroethene

Concen: 23.308 ug/L

RT: 4.04 min Scan# 351

Delta R.T. 0.00 min

Lab File: VW013876.D

Acq: 31 Oct 2019 23:28

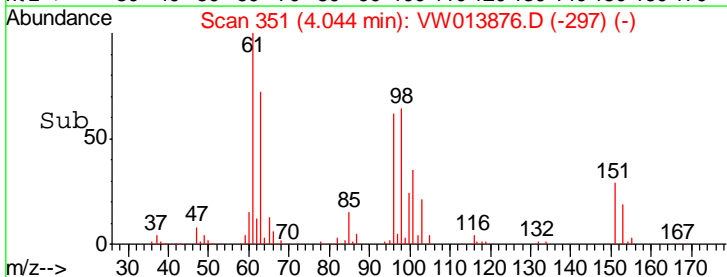
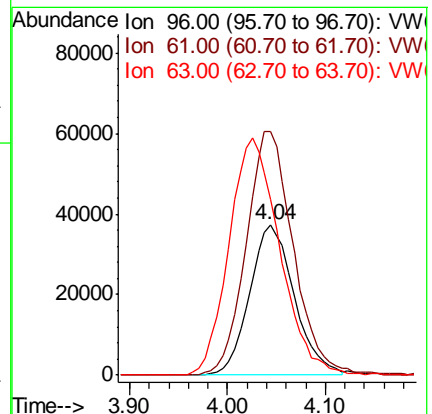
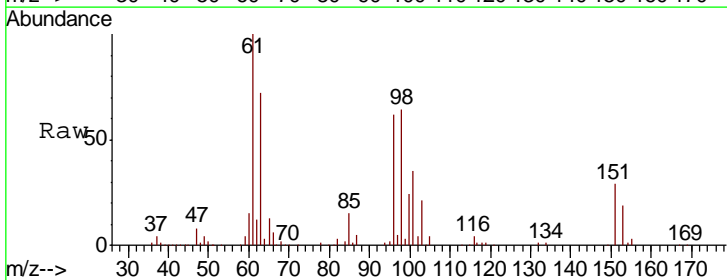
Tgt Ion: 96 Resp: 118119

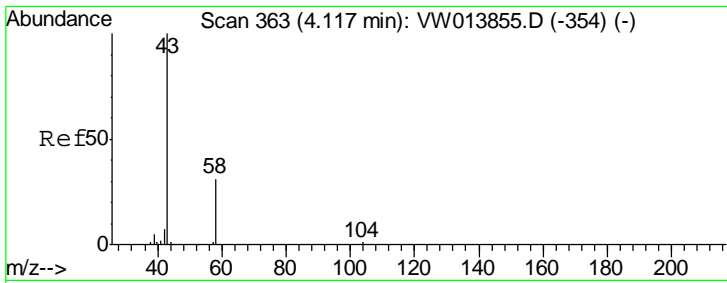
Ion Ratio Lower Upper

96 100

61 162.0 110.4 205.0

63 116.8 95.5 177.3

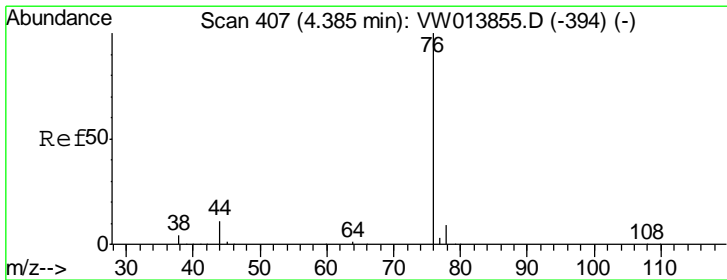
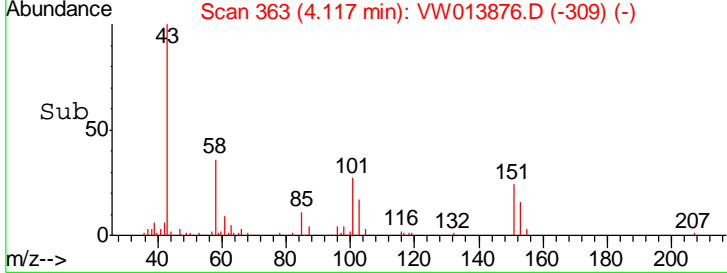
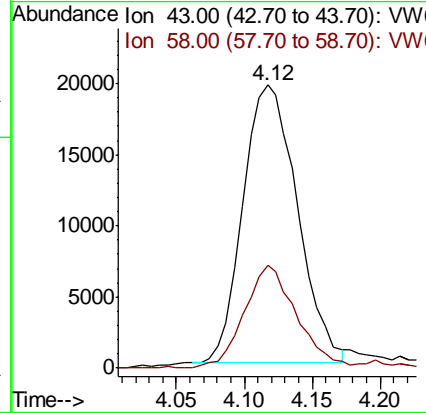
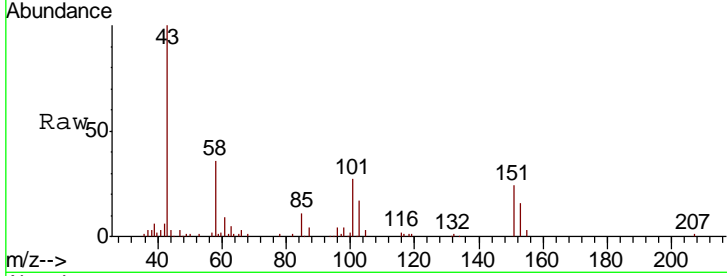




#13
 Acetone
 Concen: 35.479 ug/L
 RT: 4.12 min Scan# 363
 Delta R.T. 0.00 min
 Lab File: VW013876.D
 Acq: 31 Oct 2019 23:28

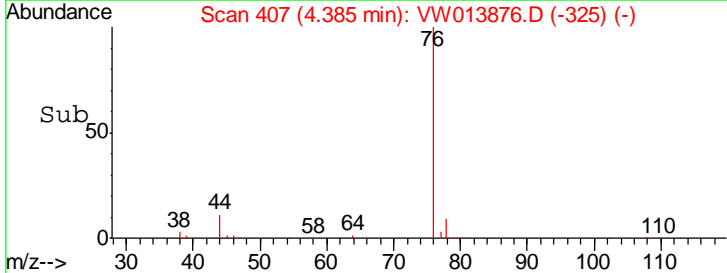
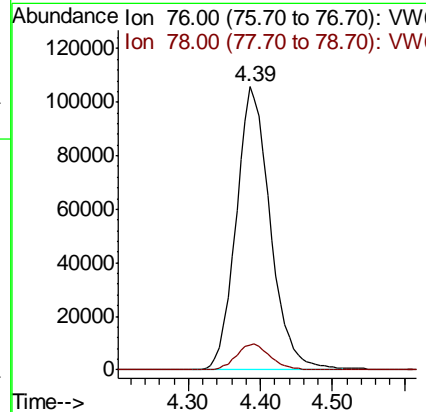
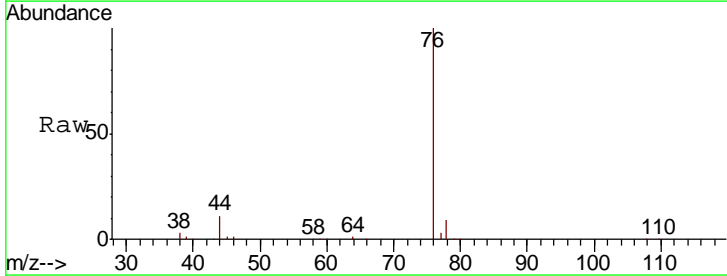
Instrument :
 MSVOA_W
 ClientSampled :

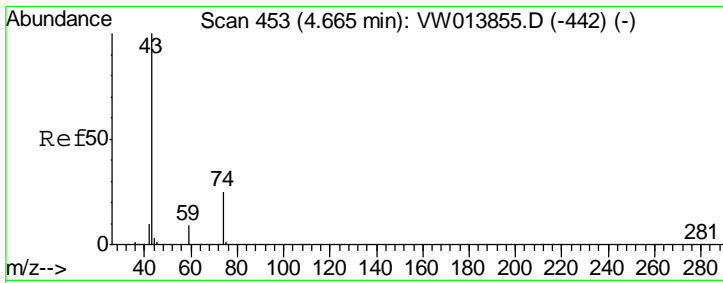
Tgt Ion	Resp	Lower	Upper
43	100		
58	35.5	0.0	63.4



#14
 Carbon disulfide
 Concen: 23.600 ug/L
 RT: 4.39 min Scan# 407
 Delta R.T. 0.00 min
 Lab File: VW013876.D
 Acq: 31 Oct 2019 23:28

Tgt Ion	Resp	Lower	Upper
76	100		
78	8.6	7.8	11.6

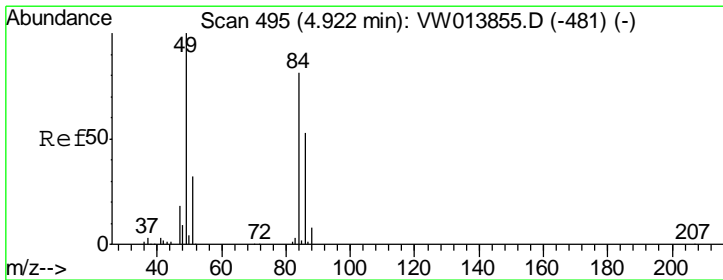
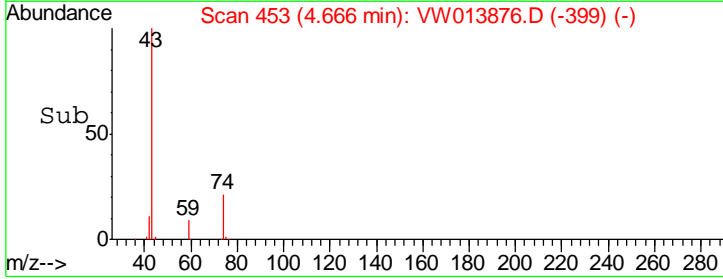
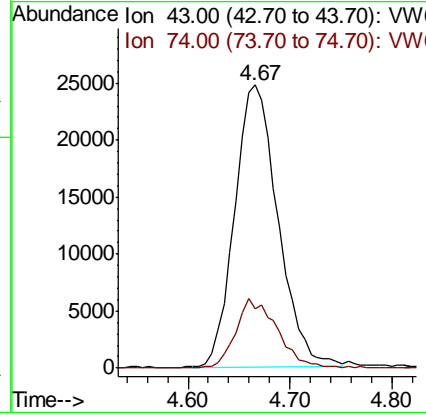
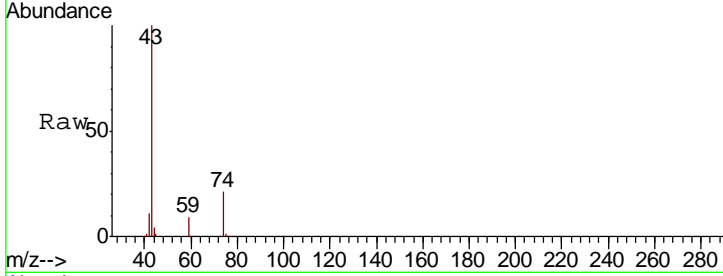




#15
 Methyl Acetate
 Concen: 25.926 ug/L
 RT: 4.67 min Scan# 453
 Delta R.T. 0.00 min
 Lab File: VW013876.D
 Acq: 31 Oct 2019 23:28

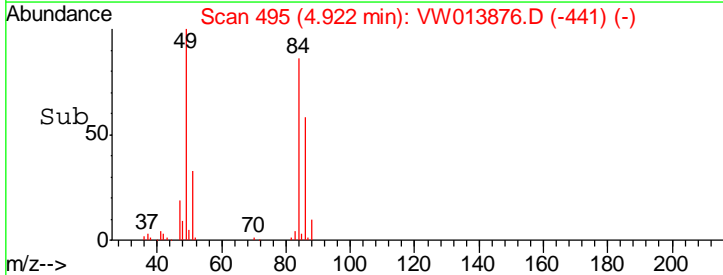
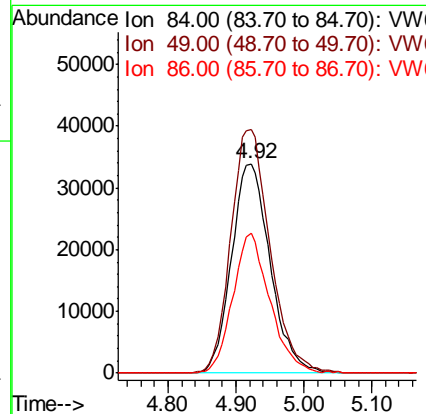
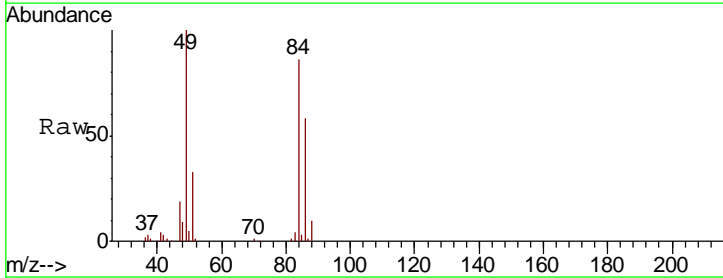
Instrument :
 MSVOA_W
 ClientSampled :

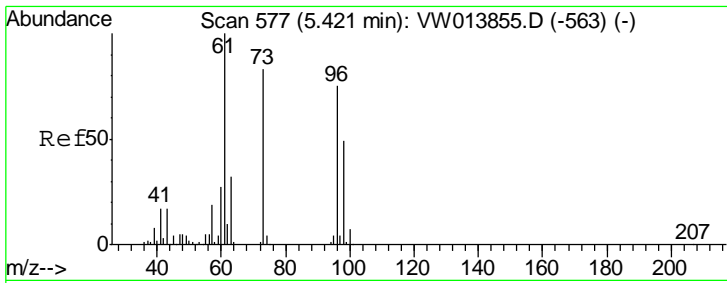
Tgt Ion	Resp	Lower	Upper
43	100		
74	23.3	19.2	28.8



#16
 Methylene chloride
 Concen: 22.396 ug/L
 RT: 4.92 min Scan# 495
 Delta R.T. 0.00 min
 Lab File: VW013876.D
 Acq: 31 Oct 2019 23:28

Tgt Ion	Resp	Lower	Upper
84	100		
49	116.2	82.2	152.6
86	66.9	45.6	84.8

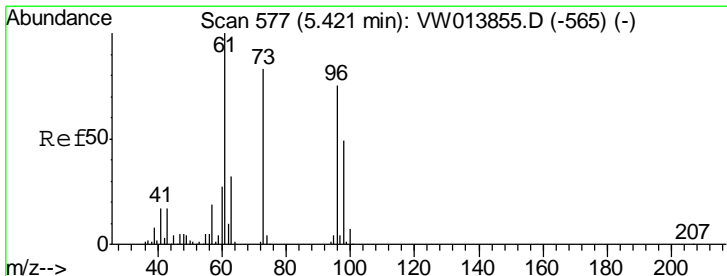
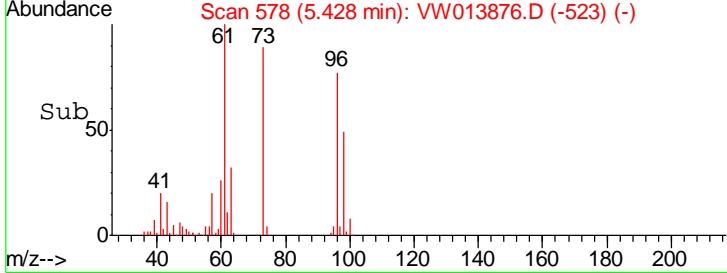
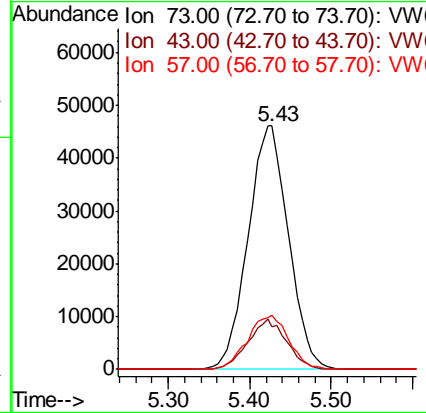
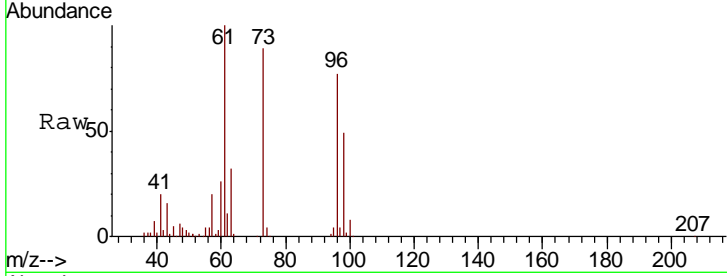




#17
 Methyl tert-butyl Ether
 Concen: 25.121 ug/L
 RT: 5.43 min Scan# 578
 Delta R.T. 0.01 min
 Lab File: VW013876.D
 Acq: 31 Oct 2019 23:28

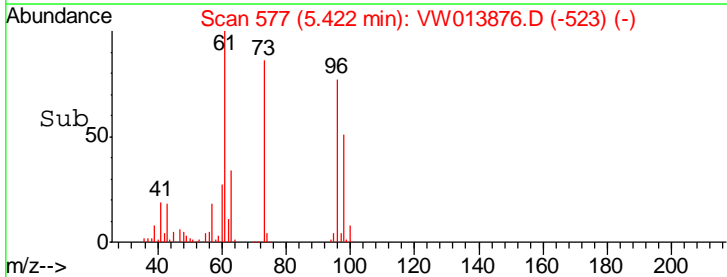
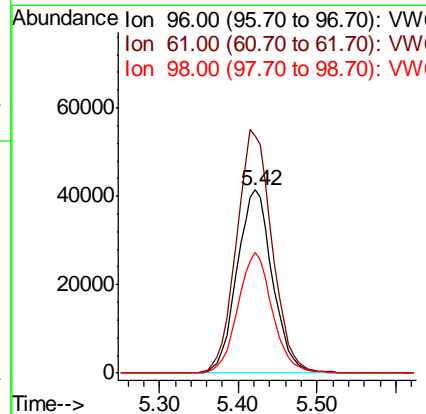
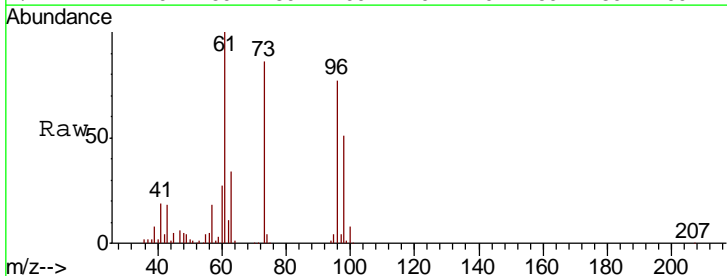
Instrument :
 MSVOA_W
 ClientSampled :

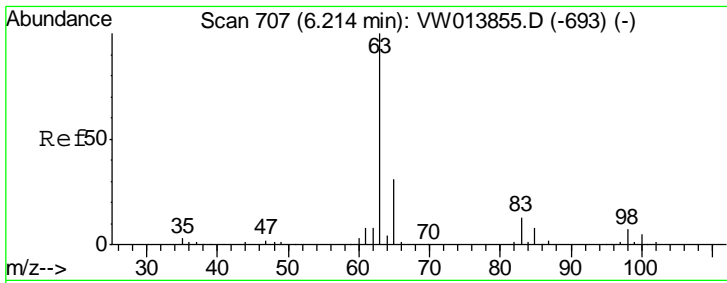
Tgt Ion	Resp	Lower	Upper
73	158520		
43	19.7	15.3	22.9
57	22.6	9.4	14.2#



#18
 trans-1,2-Dichloroethene
 Concen: 24.294 ug/L
 RT: 5.42 min Scan# 577
 Delta R.T. 0.00 min
 Lab File: VW013876.D
 Acq: 31 Oct 2019 23:28

Tgt Ion	Resp	Lower	Upper
96	128956		
61	129.3	95.5	177.4
98	65.8	45.4	84.4

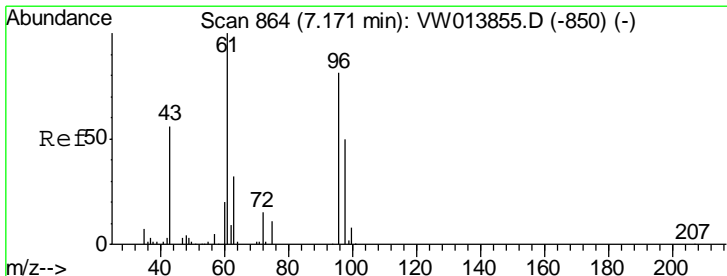
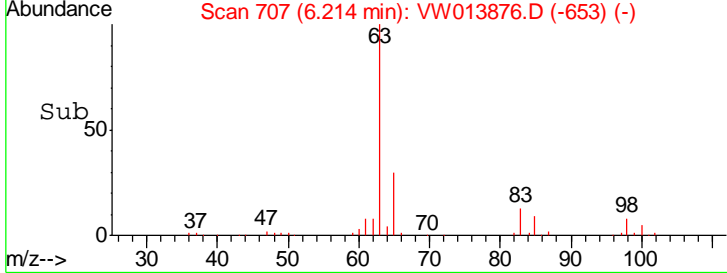
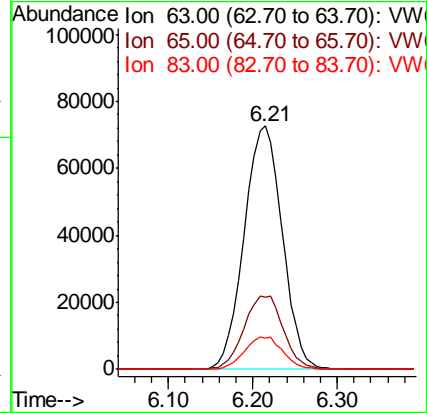
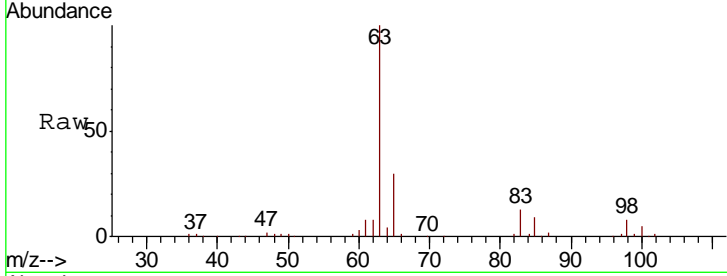




#19
 1,1-Dichloroethane
 Concen: 24.629 ug/L
 RT: 6.21 min Scan# 707
 Delta R.T. 0.00 min
 Lab File: VW013876.D
 Acq: 31 Oct 2019 23:28

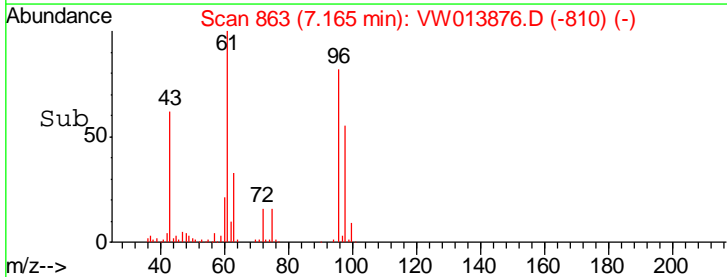
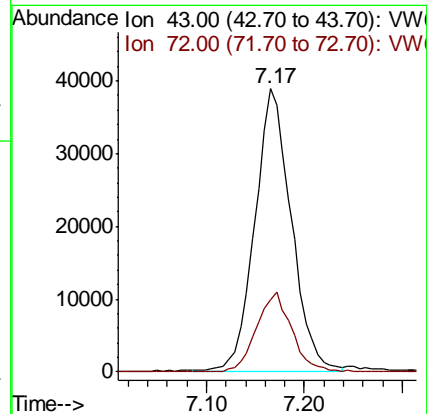
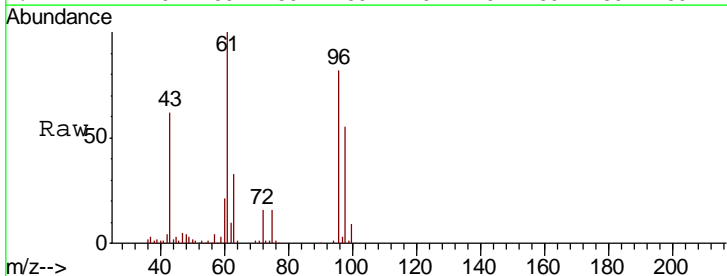
Instrument :
 MSVOA_W
 ClientSampled :

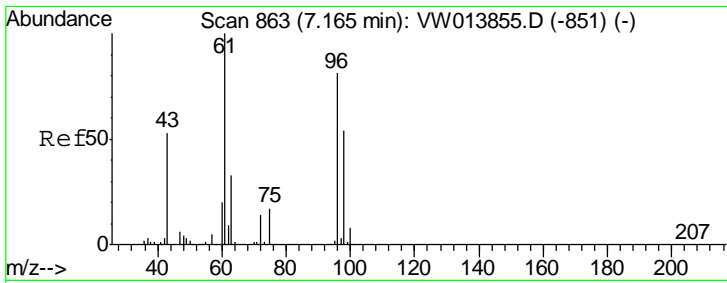
Tgt Ion	Resp	Lower	Upper
63	100		
65	29.5	22.0	40.8
83	12.8	9.1	16.9



#21
 2-Butanone
 Concen: 45.951 ug/L
 RT: 7.17 min Scan# 863
 Delta R.T. -0.01 min
 Lab File: VW013876.D
 Acq: 31 Oct 2019 23:28

Tgt Ion	Resp	Lower	Upper
43	100		
72	26.6	14.0	41.9

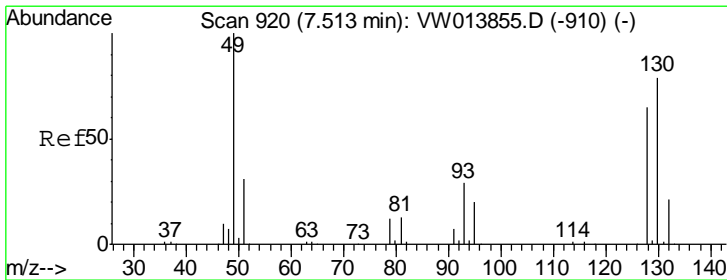
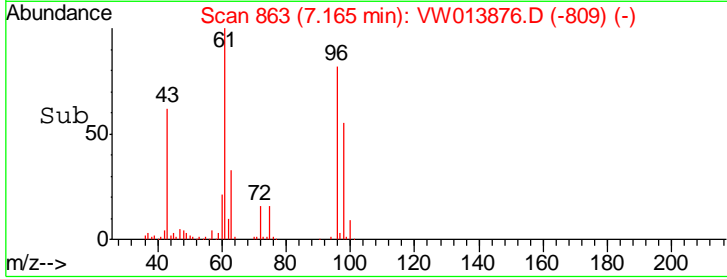
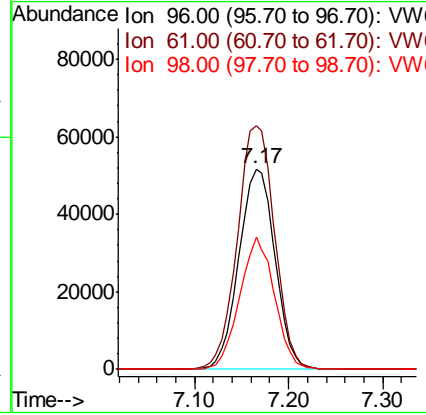
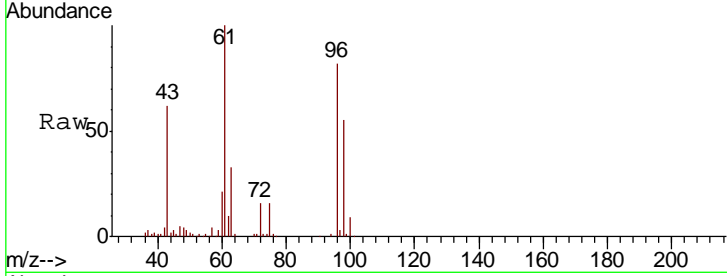




#22
 cis-1,2-Dichloroethene
 Concen: 24.287 ug/L
 RT: 7.17 min Scan# 863
 Delta R.T. 0.00 min
 Lab File: VW013876.D
 Acq: 31 Oct 2019 23:28

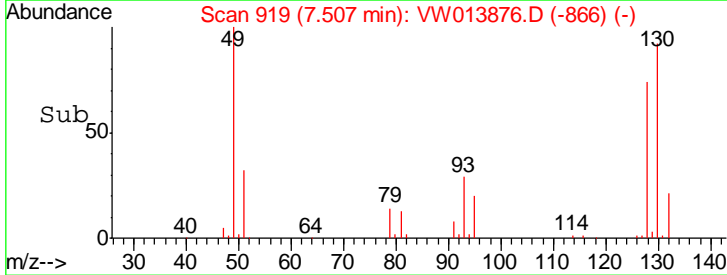
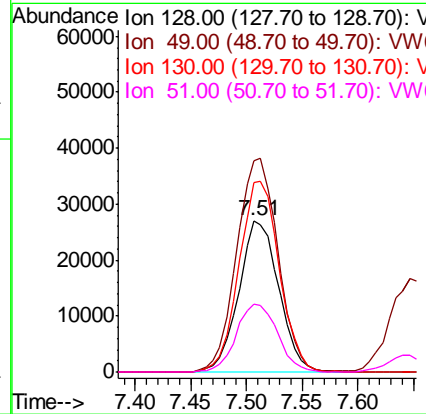
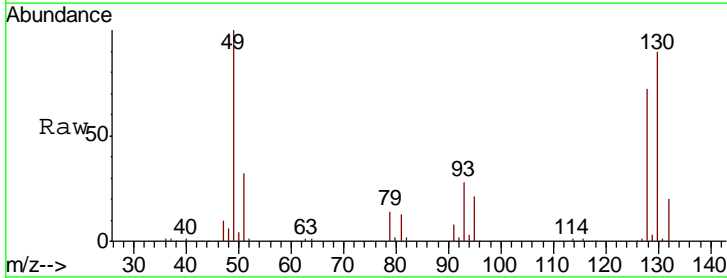
Instrument :
 MSVOA_W
 ClientSampled :

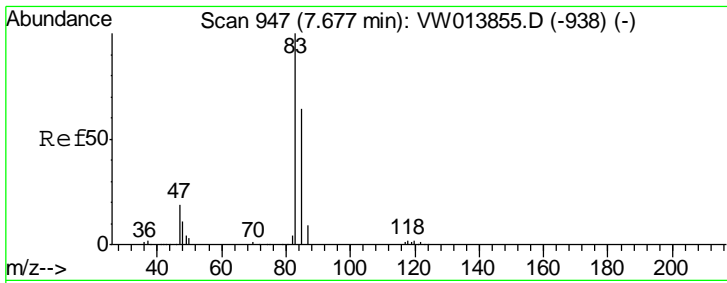
Tgt Ion	Resp	Lower	Upper
96	138000		
Ion Ratio			
96	100		
61	121.4	86.6	160.8
98	66.2	44.5	82.7



#23
 Bromochloromethane
 Concen: 25.387 ug/L
 RT: 7.51 min Scan# 919
 Delta R.T. -0.01 min
 Lab File: VW013876.D
 Acq: 31 Oct 2019 23:28

Tgt Ion	Resp	Lower	Upper
128	67339		
Ion Ratio			
128	100		
49	139.0	99.1	184.1
130	124.8	88.8	164.8
51	44.9	39.6	59.4

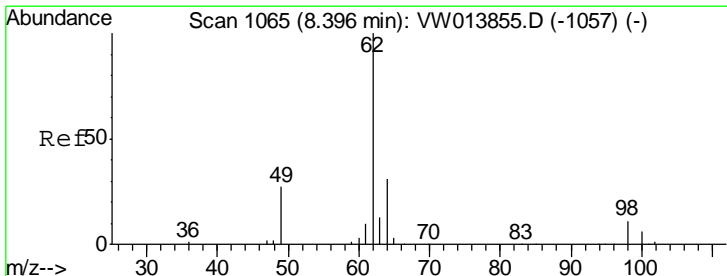
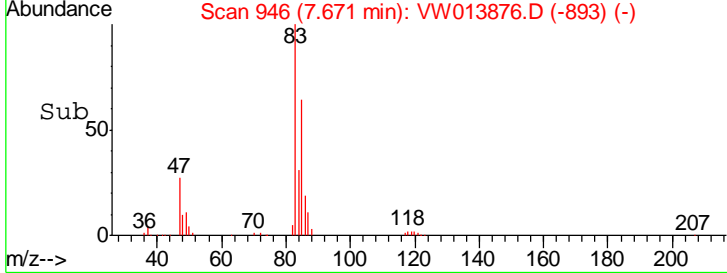
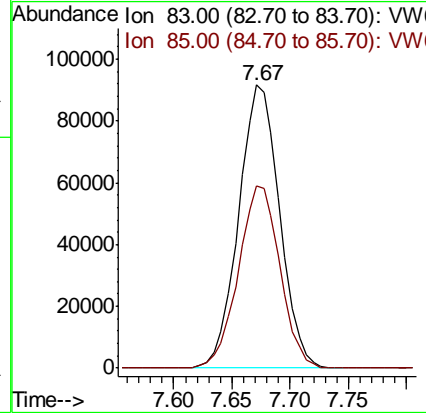
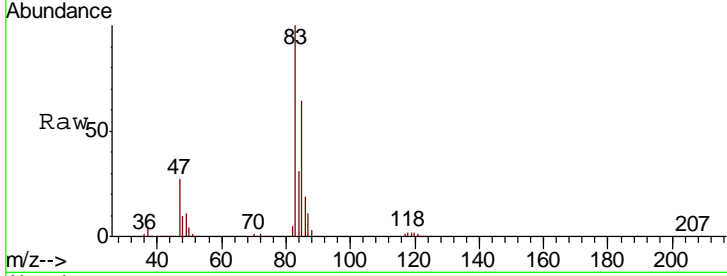




#25
 Chloroform
 Concen: 24.572 ug/L
 RT: 7.67 min Scan# 946
 Delta R.T. -0.01 min
 Lab File: VW013876.D
 Acq: 31 Oct 2019 23:28

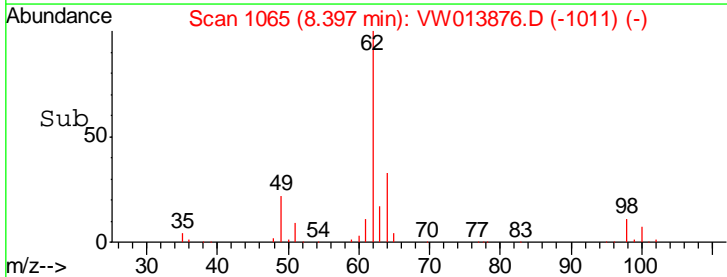
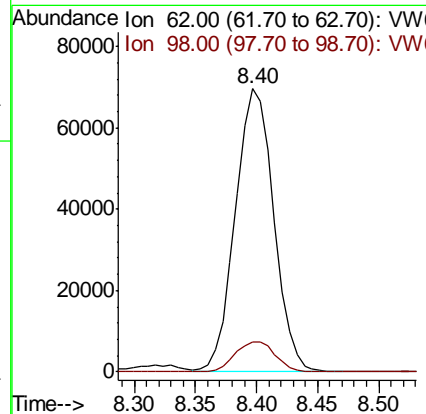
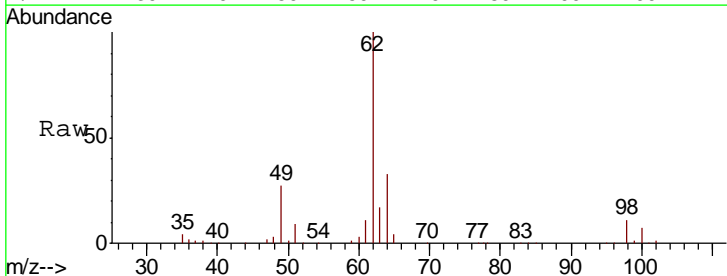
Instrument :
 MSVOA_W
 ClientSampled :

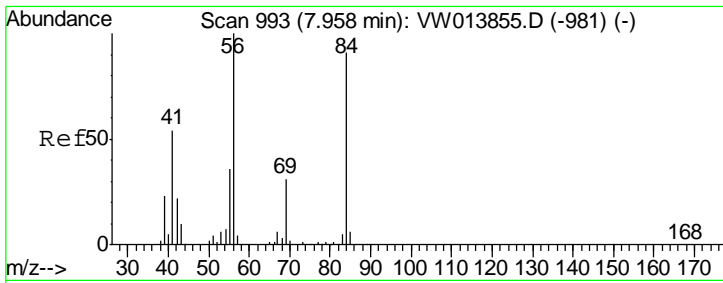
Tgt Ion	Resp	Lower	Upper
83	223989		
85	65.3	46.2	85.8



#27
 1,2-Dichloroethane
 Concen: 25.336 ug/L
 RT: 8.40 min Scan# 1065
 Delta R.T. 0.00 min
 Lab File: VW013876.D
 Acq: 31 Oct 2019 23:28

Tgt Ion	Resp	Lower	Upper
62	151902		
98	10.7	8.6	12.8

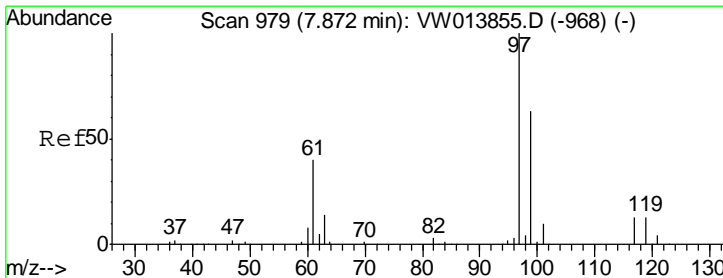
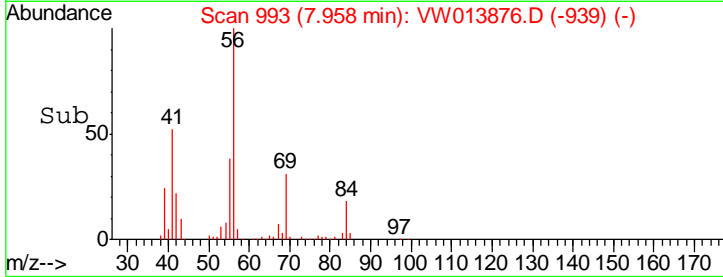
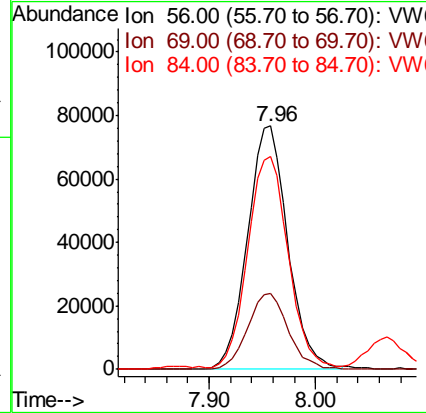
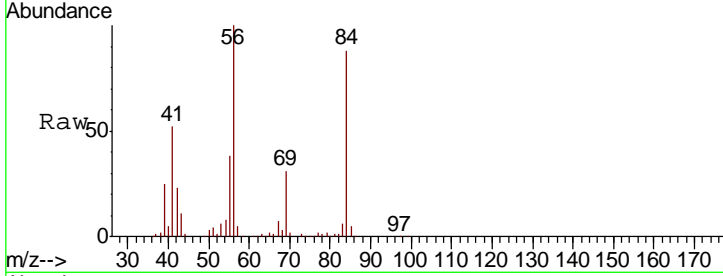




#30
 Cyclohexane
 Concen: 23.197 ug/L
 RT: 7.96 min Scan# 993
 Delta R.T. 0.00 min
 Lab File: VW013876.D
 Acq: 31 Oct 2019 23:28

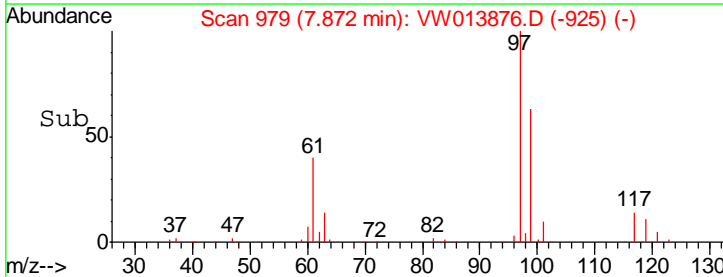
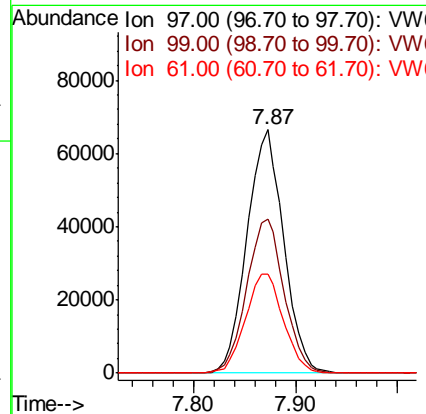
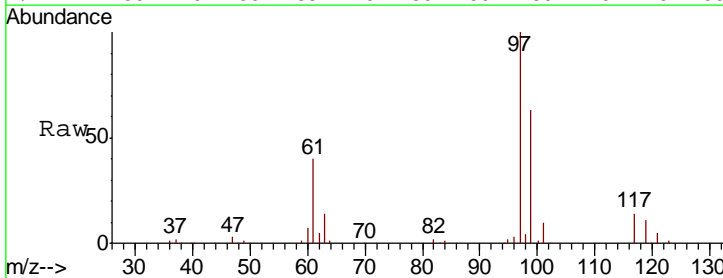
Instrument :
 MSVOA_W
 ClientSampled :

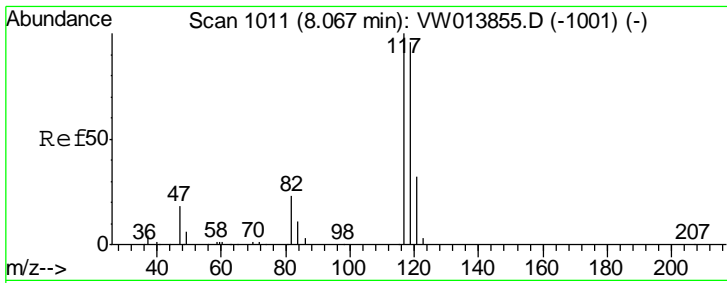
Tgt Ion	Resp	Lower	Upper
56	100		
69	31.4	24.6	36.8
84	88.7	70.2	105.4



#31
 1,1,1-Trichloroethane
 Concen: 23.760 ug/L
 RT: 7.87 min Scan# 979
 Delta R.T. 0.00 min
 Lab File: VW013876.D
 Acq: 31 Oct 2019 23:28

Tgt Ion	Resp	Lower	Upper
97	100		
99	64.4	51.3	76.9
61	41.9	33.6	50.4

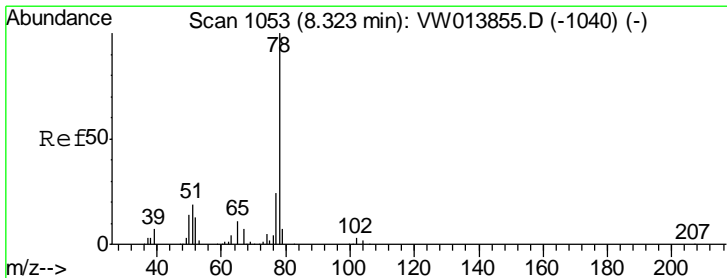
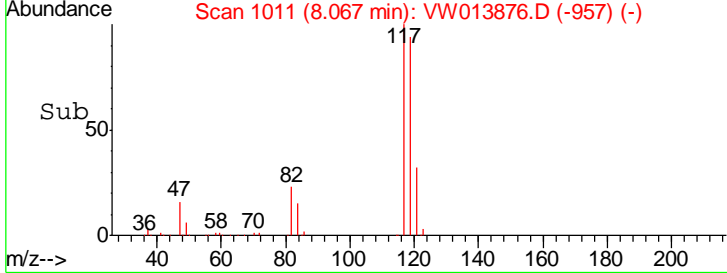
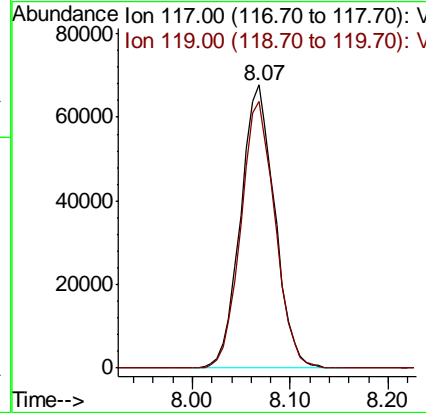
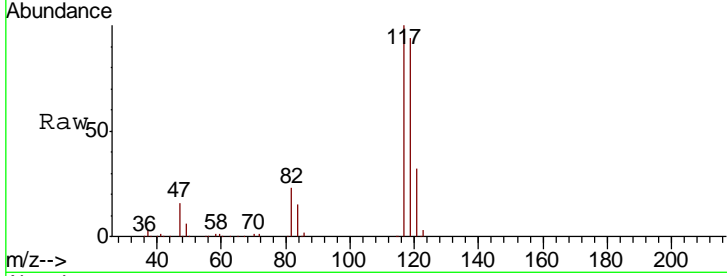




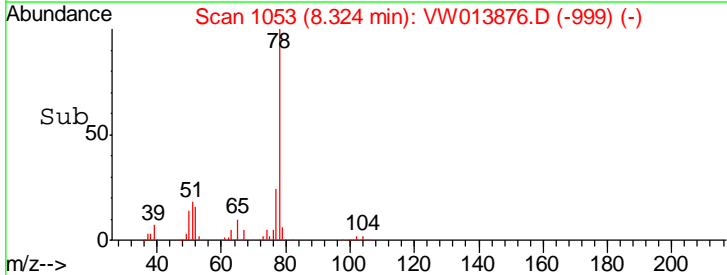
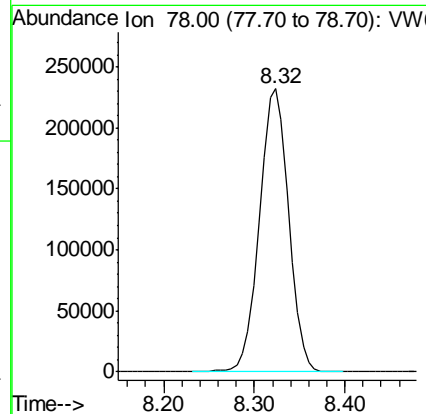
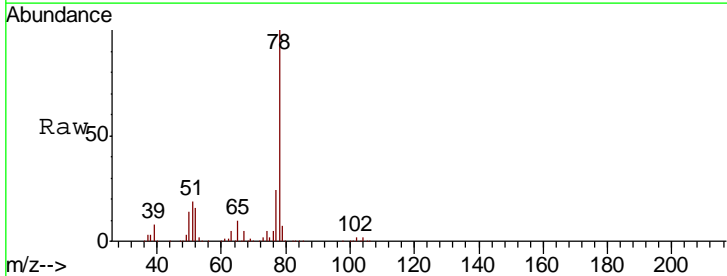
#32
 Carbon tetrachloride
 Concen: 23.533 ug/L
 RT: 8.07 min Scan# 1011
 Delta R.T. 0.00 min
 Lab File: VW013876.D
 Acq: 31 Oct 2019 23:28

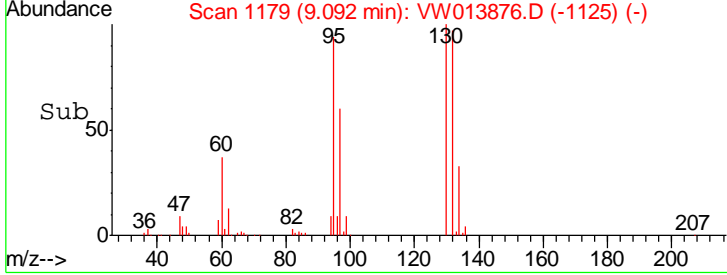
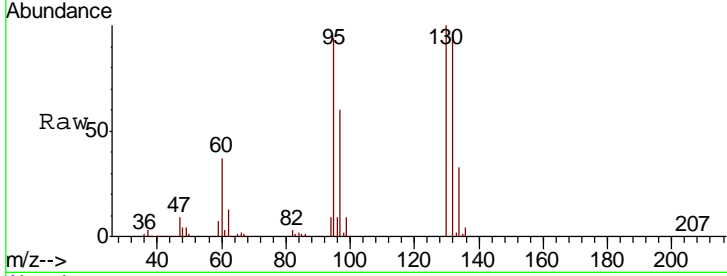
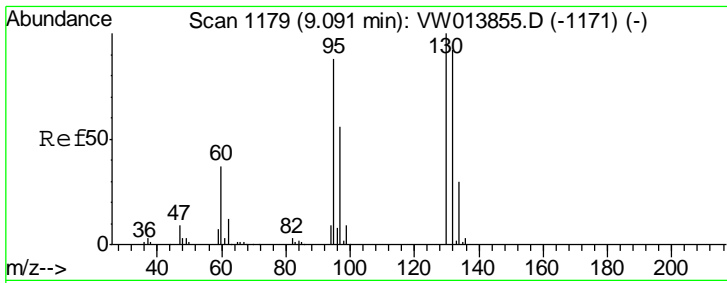
Instrument :
 MSVOA_W
 ClientSampled :

Tgt Ion: 117 Resp: 164028
 Ion Ratio Lower Upper
 117 100
 119 94.3 75.8 113.6



#34
 Benzene
 Concen: 24.473 ug/L
 RT: 8.32 min Scan# 1053
 Delta R.T. 0.00 min
 Lab File: VW013876.D
 Acq: 31 Oct 2019 23:28
 Tgt Ion: 78 Resp: 518520

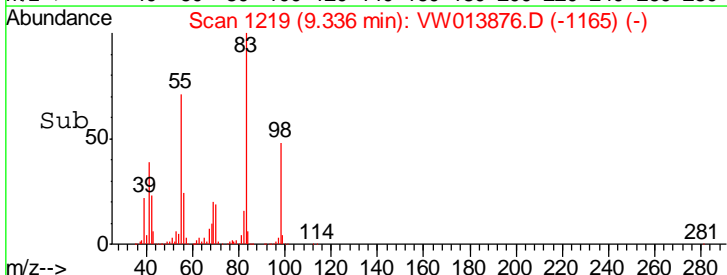
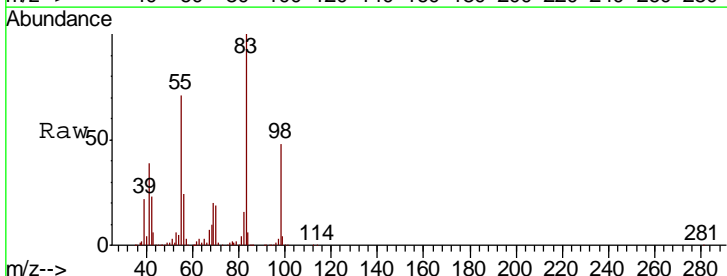
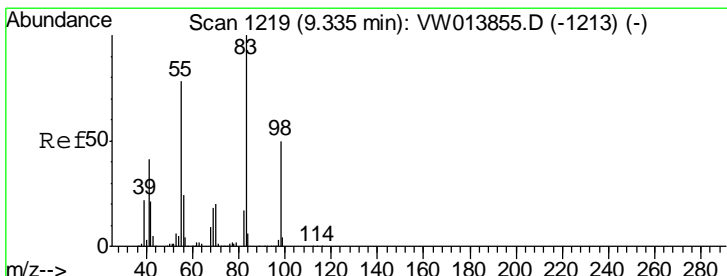
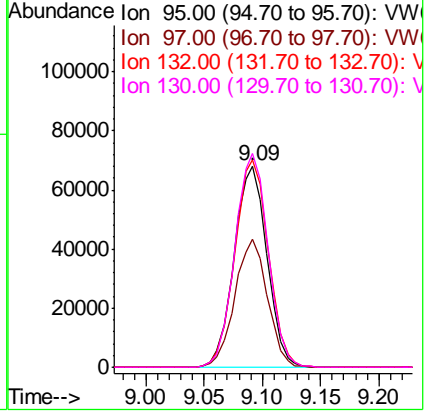




#35
 Trichloroethene
 Concen: 23.963 ug/L
 RT: 9.09 min Scan# 1179
 Delta R.T. 0.00 min
 Lab File: VW013876.D
 Acq: 31 Oct 2019 23:28

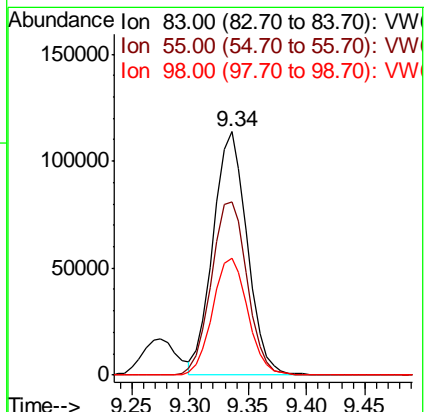
Instrument :
 MSVOA_W
 ClientSampled :

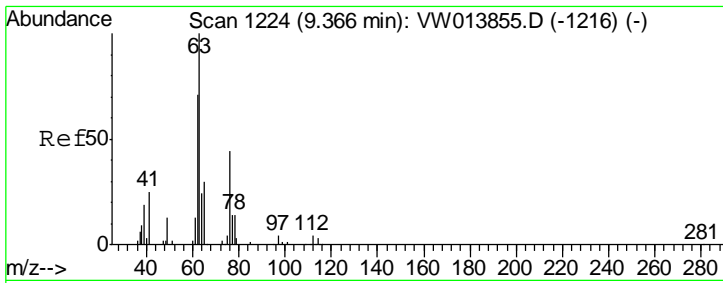
Tgt Ion	Resp	Lower	Upper
95	133994		
97	63.0	45.0	83.6
132	105.3	72.4	134.4
130	107.2	76.6	142.3



#36
 Methylcyclohexane
 Concen: 23.803 ug/L
 RT: 9.34 min Scan# 1219
 Delta R.T. 0.00 min
 Lab File: VW013876.D
 Acq: 31 Oct 2019 23:28

Tgt Ion	Resp	Lower	Upper
83	230409		
55	74.8	60.3	90.5
98	49.3	39.4	59.2

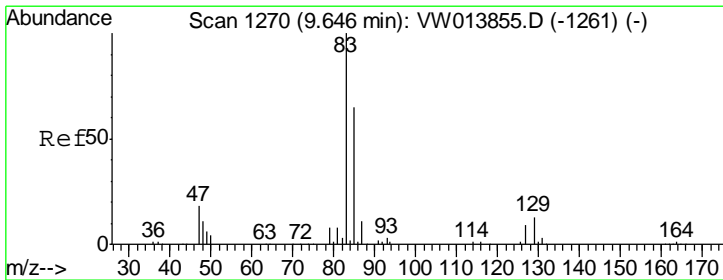
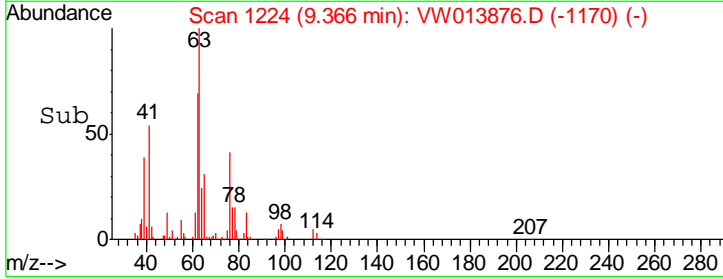
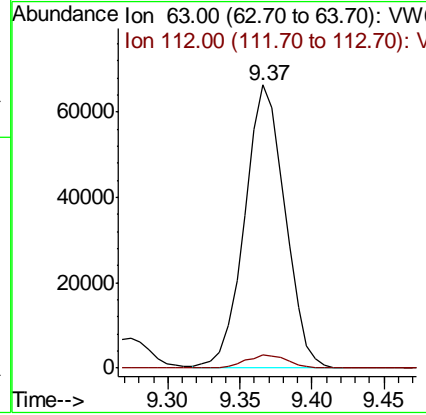
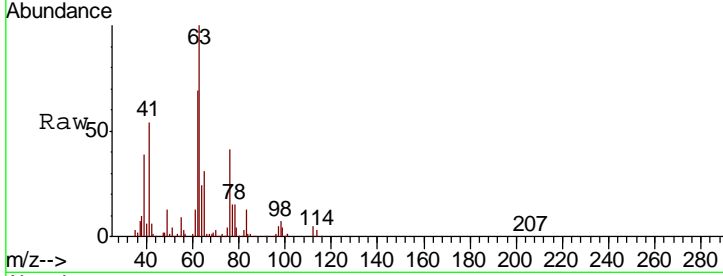




#40
 1,2-Dichloropropane
 Concen: 24.599 ug/L
 RT: 9.37 min Scan# 1224
 Delta R.T. 0.00 min
 Lab File: VW013876.D
 Acq: 31 Oct 2019 23:28

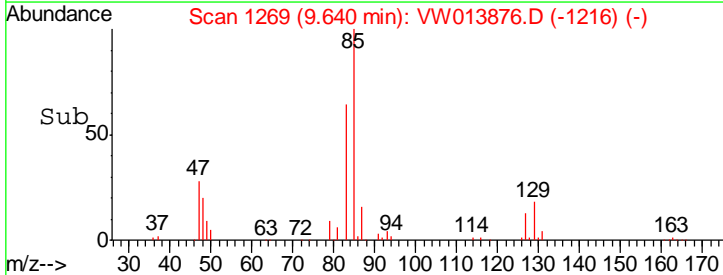
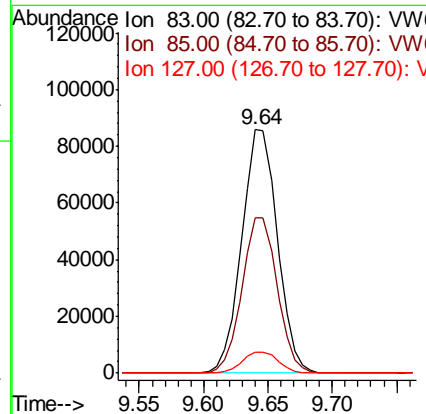
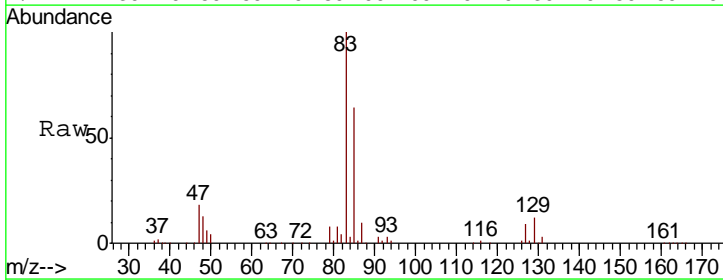
Instrument :
 MSVOA_W
 ClientSampled :

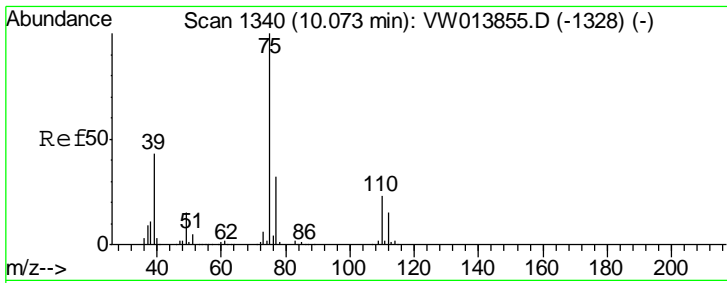
Tgt Ion	Resp	Lower	Upper
63	128752		
112	4.8	4.1	6.1



#41
 Bromodichloromethane
 Concen: 25.049 ug/L
 RT: 9.64 min Scan# 1269
 Delta R.T. -0.01 min
 Lab File: VW013876.D
 Acq: 31 Oct 2019 23:28

Tgt Ion	Resp	Lower	Upper
83	164659		
85	63.8	43.5	80.7
127	8.5	6.9	10.3

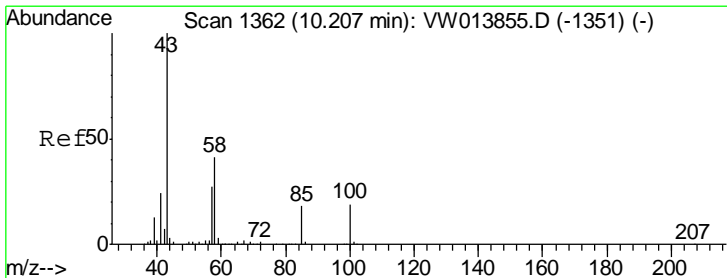
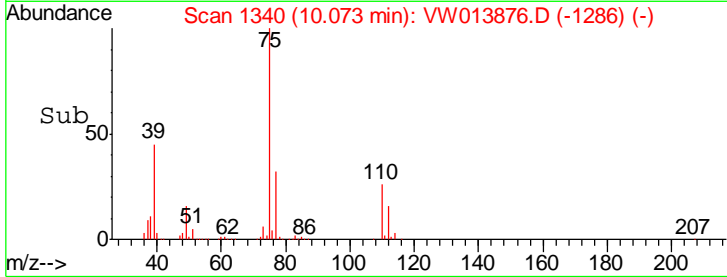
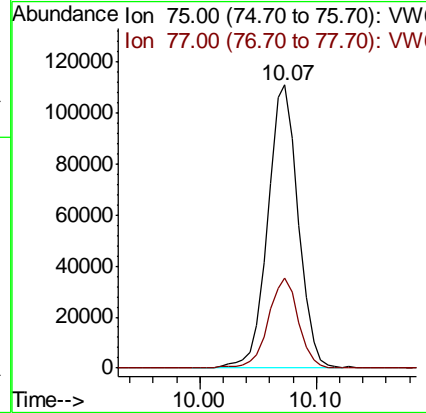
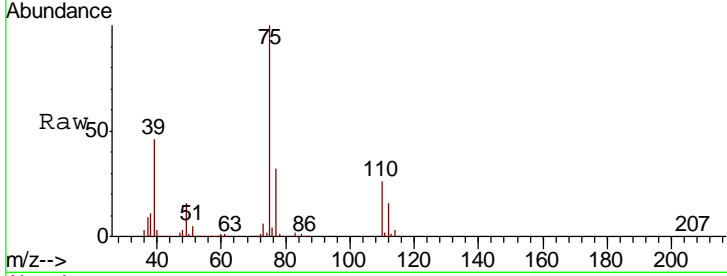




#42
 cis-1,3-Dichloropropene
 Concen: 24.570 ug/L
 RT: 10.07 min Scan# 1340
 Delta R.T. 0.00 min
 Lab File: VW013876.D
 Acq: 31 Oct 2019 23:28

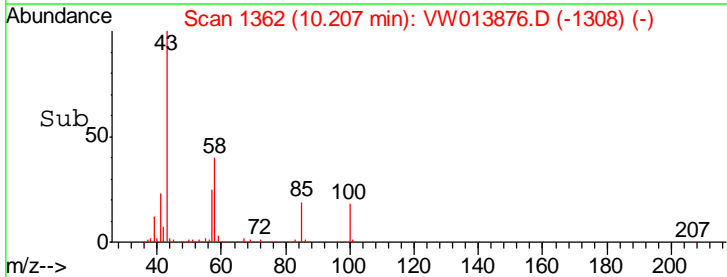
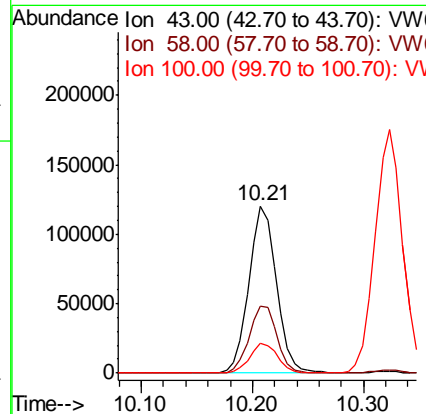
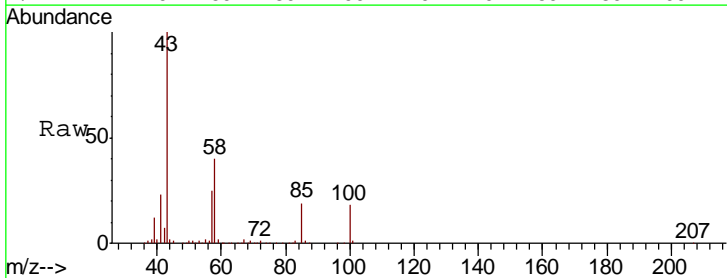
Instrument :
 MSVOA_W
 ClientSampled :

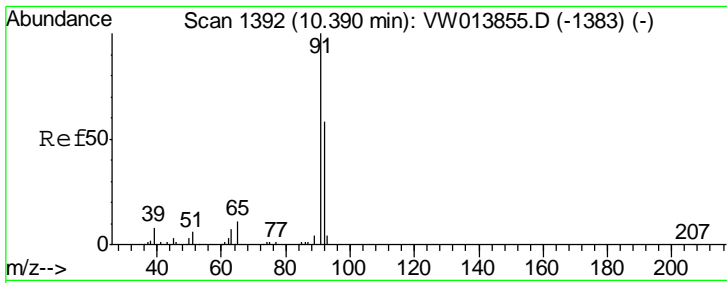
Tgt Ion: 75 Resp: 201894
 Ion Ratio Lower Upper
 75 100
 77 31.9 22.1 41.1



#43
 4-Methyl-2-pentanone
 Concen: 51.341 ug/L
 RT: 10.21 min Scan# 1362
 Delta R.T. 0.00 min
 Lab File: VW013876.D
 Acq: 31 Oct 2019 23:28

Tgt Ion: 43 Resp: 207350
 Ion Ratio Lower Upper
 43 100
 58 40.7 32.1 48.1
 100 18.0 13.4 20.0

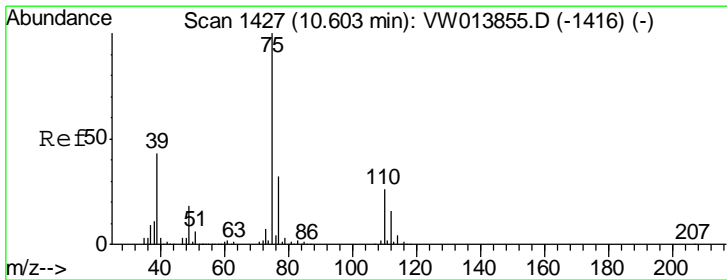
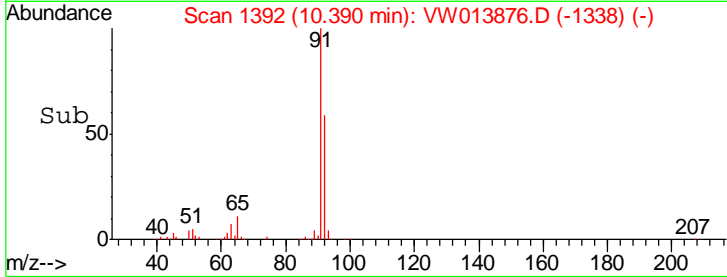
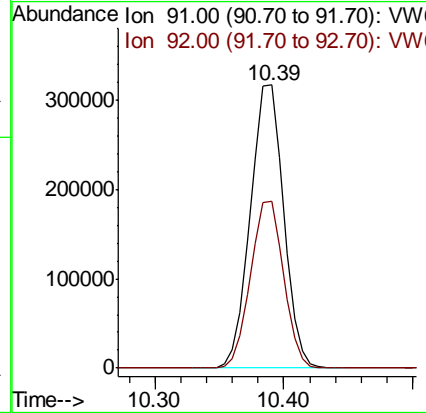
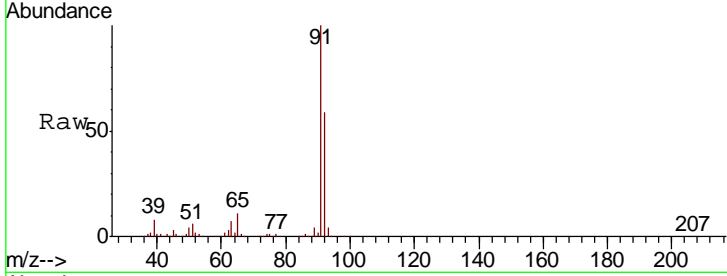




#44
 Toluene
 Concen: 24.671 ug/L
 RT: 10.39 min Scan# 1392
 Delta R.T. 0.00 min
 Lab File: VW013876.D
 Acq: 31 Oct 2019 23:28

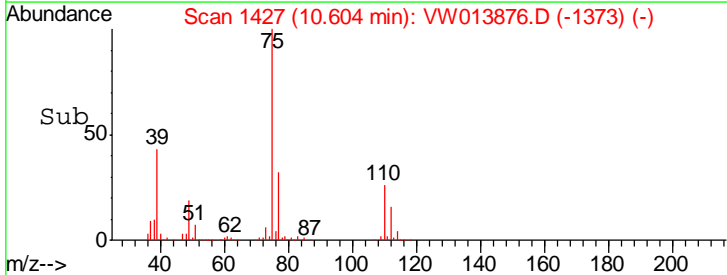
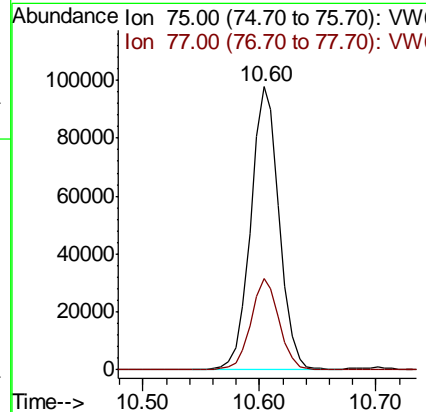
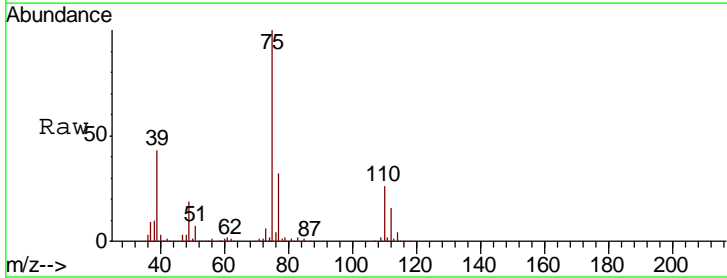
Instrument :
 MSVOA_W
 ClientSampled :

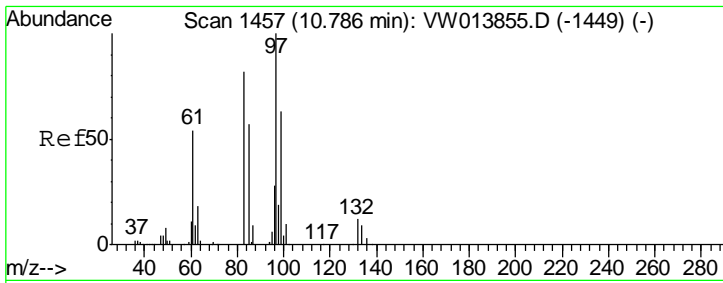
Tgt Ion: 91 Resp: 564405
 Ion Ratio Lower Upper
 91 100
 92 58.9 42.0 78.0



#45
 trans-1,3-Dichloropropene
 Concen: 24.758 ug/L
 RT: 10.60 min Scan# 1427
 Delta R.T. 0.00 min
 Lab File: VW013876.D
 Acq: 31 Oct 2019 23:28

Tgt Ion: 75 Resp: 165921
 Ion Ratio Lower Upper
 75 100
 77 32.2 21.9 40.7

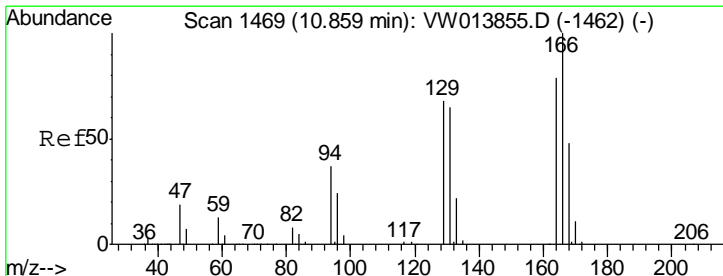
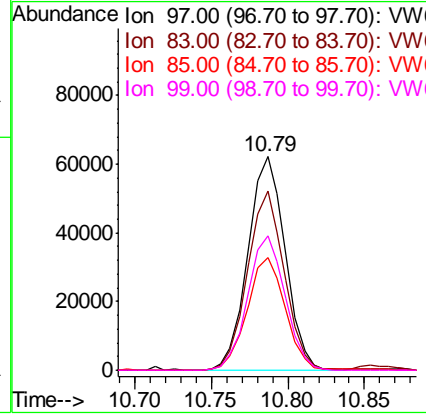
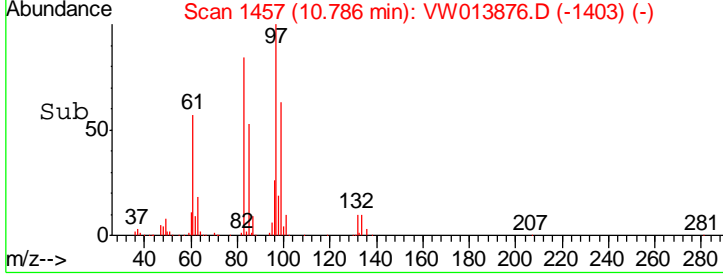
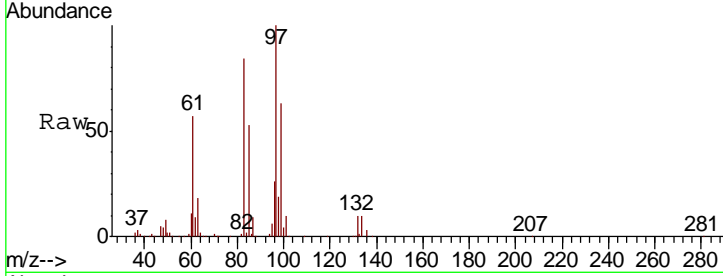




#46
 1,1,2-Trichloroethane
 Concen: 24.929 ug/L
 RT: 10.79 min Scan# 1457
 Delta R.T. 0.00 min
 Lab File: VW013876.D
 Acq: 31 Oct 2019 23:28

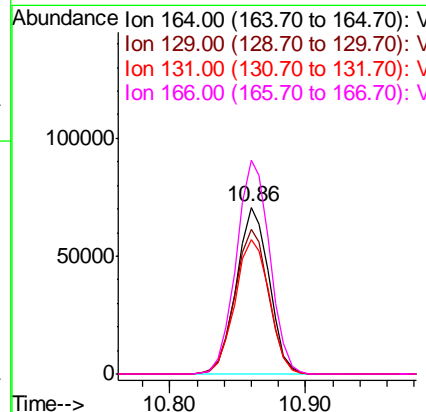
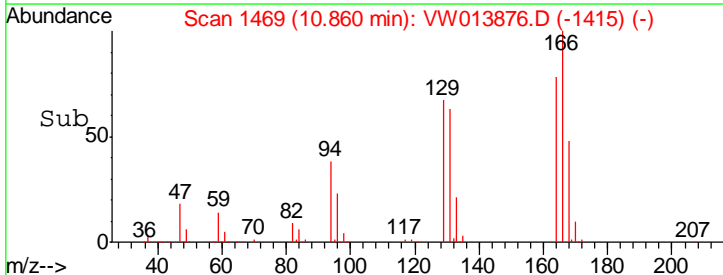
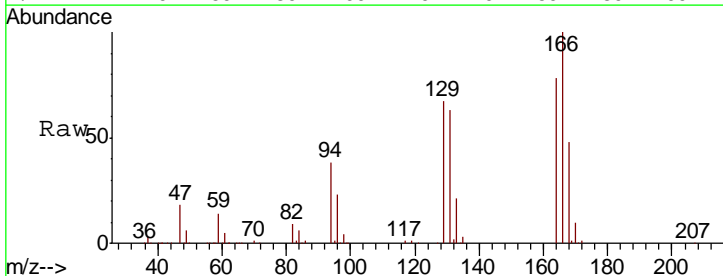
Instrument :
 MSVOA_W
 ClientSampled :

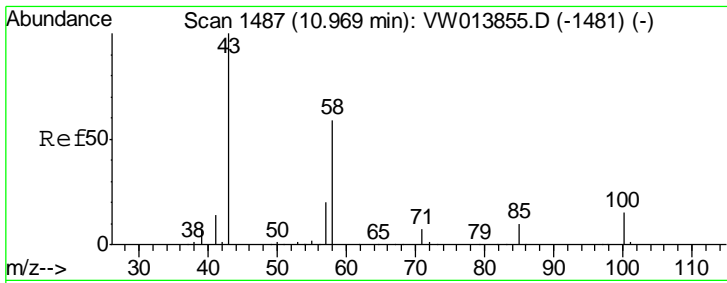
Tgt Ion	Resp	Lower	Upper
97	105203		
83	84.0	57.8	107.4
85	52.6	38.3	71.1
99	63.1	42.2	78.4



#47
 Tetrachloroethene
 Concen: 23.560 ug/L
 RT: 10.86 min Scan# 1469
 Delta R.T. 0.00 min
 Lab File: VW013876.D
 Acq: 31 Oct 2019 23:28

Tgt Ion	Resp	Lower	Upper
164	118316		
129	86.5	62.5	116.1
131	81.0	59.8	111.0
166	128.2	91.6	170.0

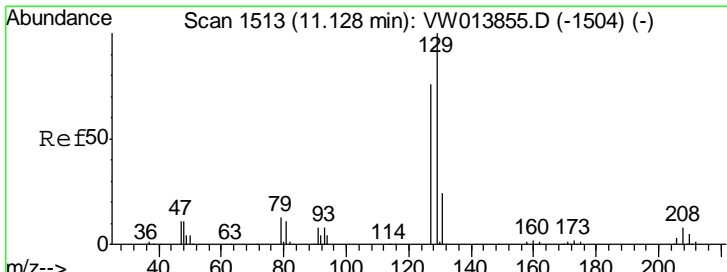
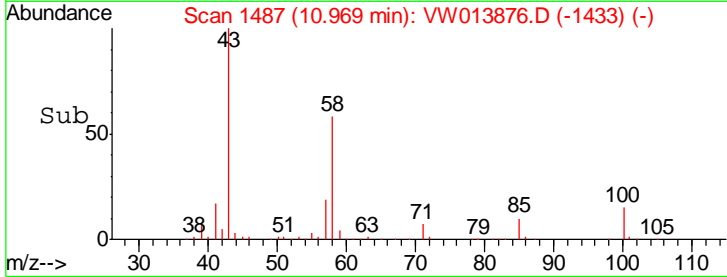
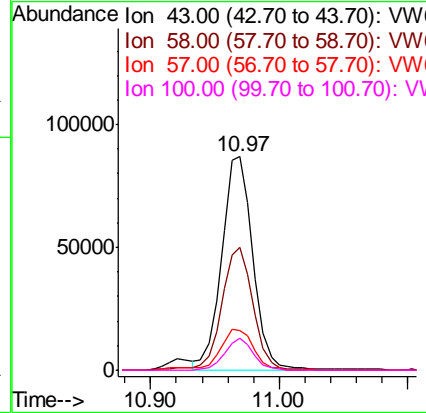
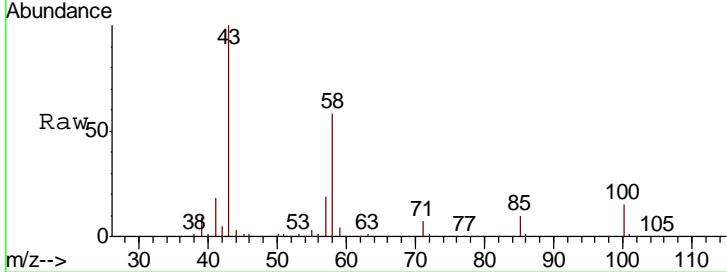




#49
 2-Hexanone
 Concen: 51.275 ug/L
 RT: 10.97 min Scan# 1487
 Delta R.T. 0.00 min
 Lab File: VW013876.D
 Acq: 31 Oct 2019 23:28

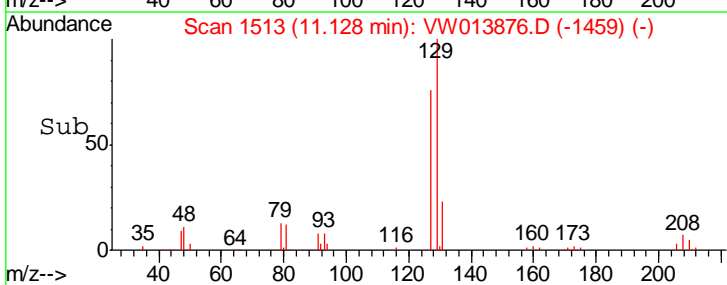
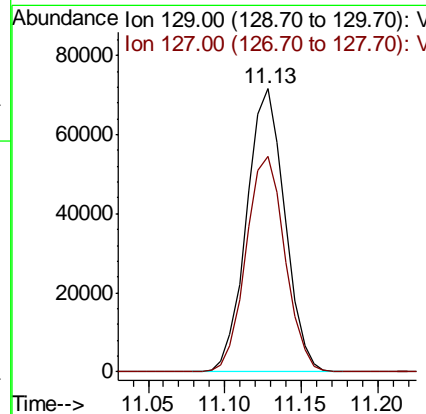
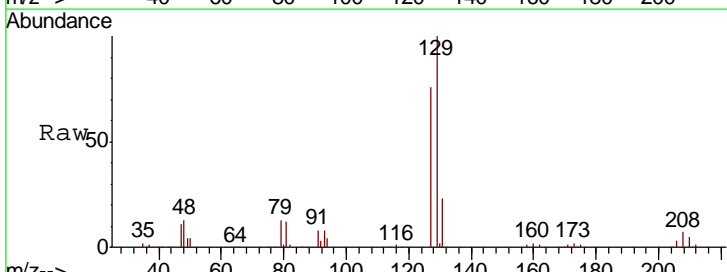
Instrument :
 MSVOA_W
 ClientSampled :

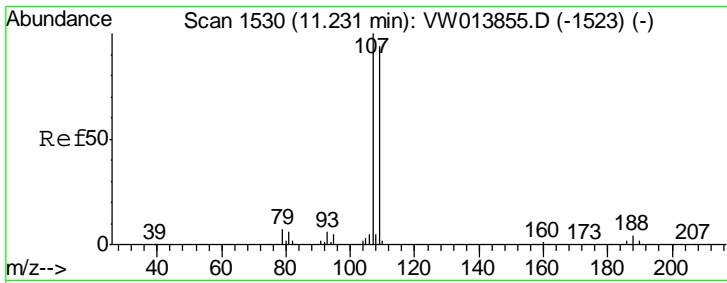
Tgt Ion	Resp	Lower	Upper
43	148188		
58	55.4	47.0	70.4
57	19.7	16.0	24.0
100	13.8	11.2	16.8



#50
 Dibromochloromethane
 Concen: 25.449 ug/L
 RT: 11.13 min Scan# 1513
 Delta R.T. 0.00 min
 Lab File: VW013876.D
 Acq: 31 Oct 2019 23:28

Tgt Ion	Resp	Lower	Upper
129	124857		
127	76.0	52.6	97.8

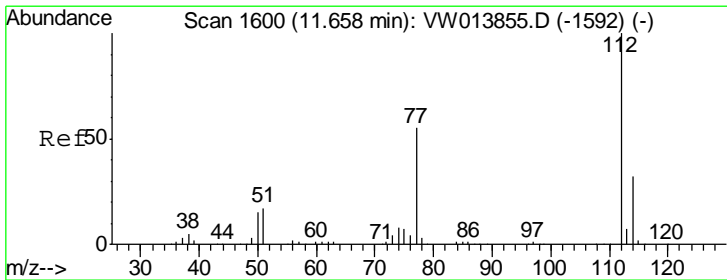
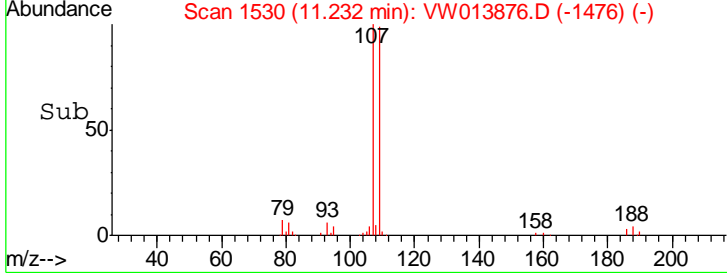
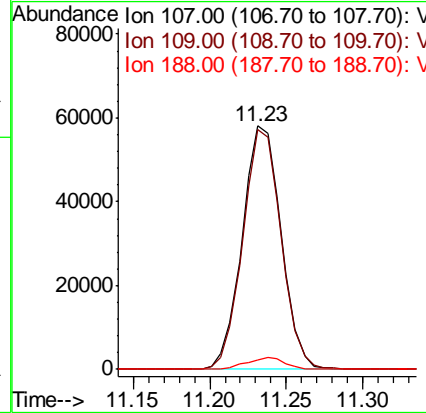
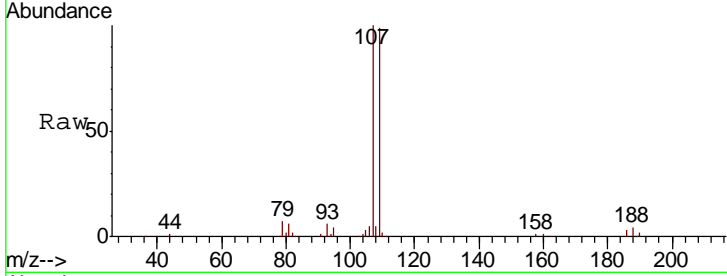




#51
 1,2-Dibromoethane
 Concen: 24.853 ug/L
 RT: 11.23 min Scan# 1530
 Delta R.T. 0.00 min
 Lab File: VW013876.D
 Acq: 31 Oct 2019 23:28

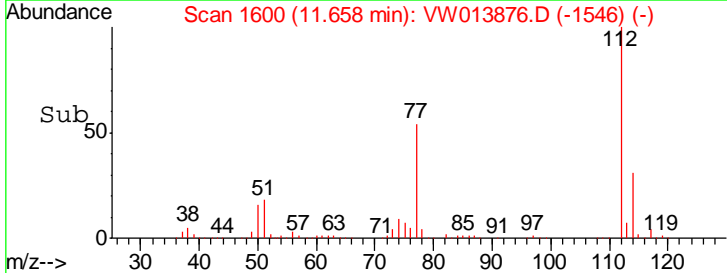
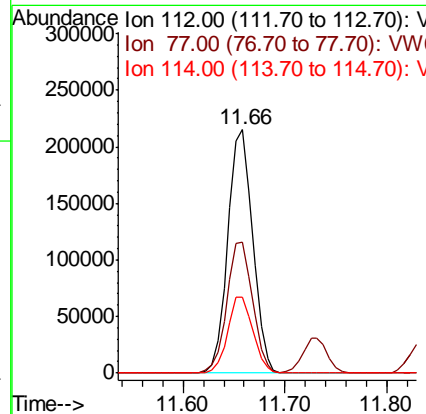
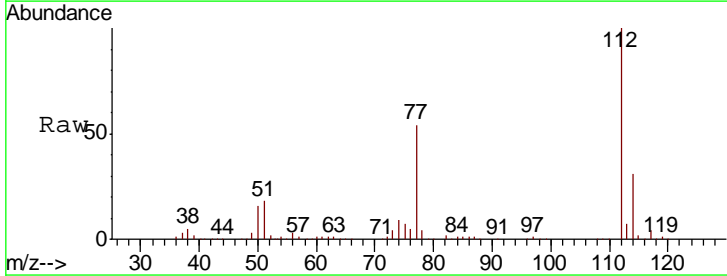
Instrument :
 MSVOA_W
 ClientSampled :

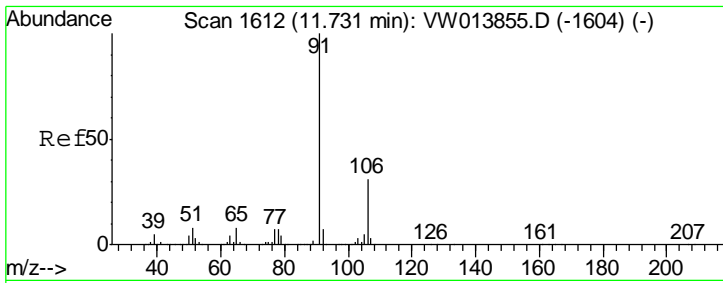
Tgt Ion	Resp	Lower	Upper
107	102658		
109	98.7	67.3	124.9
188	4.0	3.5	5.3



#52
 Chlorobenzene
 Concen: 24.524 ug/L
 RT: 11.66 min Scan# 1600
 Delta R.T. 0.00 min
 Lab File: VW013876.D
 Acq: 31 Oct 2019 23:28

Tgt Ion	Resp	Lower	Upper
112	363834		
77	53.7	44.7	67.1
114	31.3	23.1	42.9

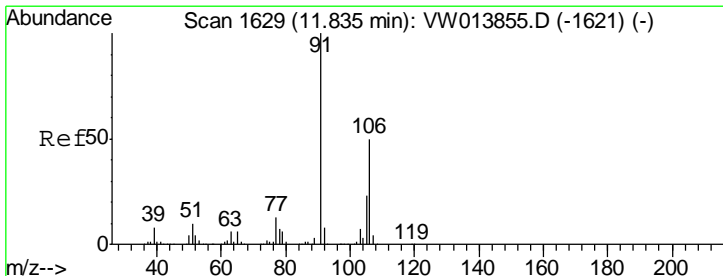
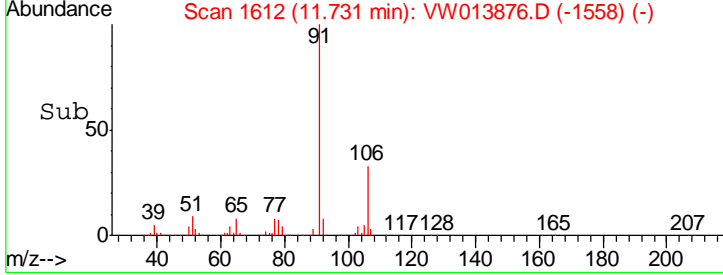
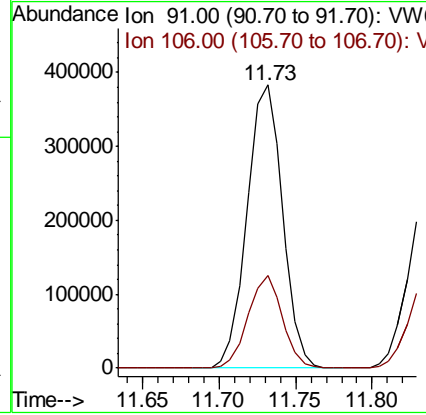
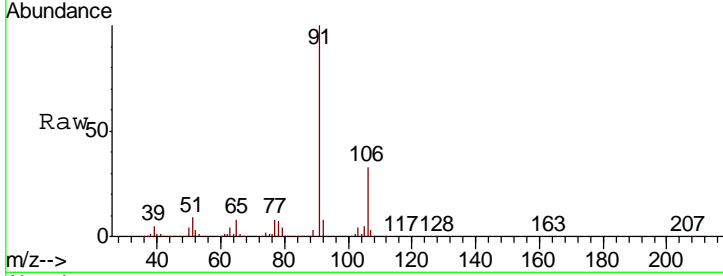




#53
 Ethylbenzene
 Concen: 24.550 ug/L
 RT: 11.73 min Scan# 1612
 Delta R.T. 0.00 min
 Lab File: VW013876.D
 Acq: 31 Oct 2019 23:28

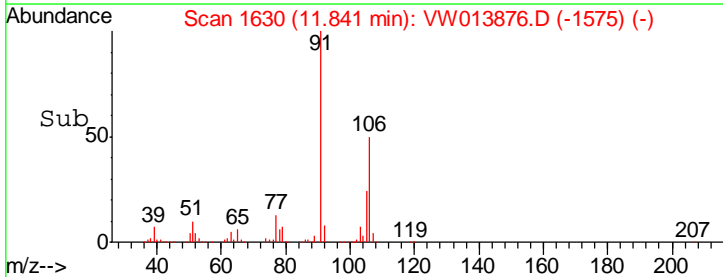
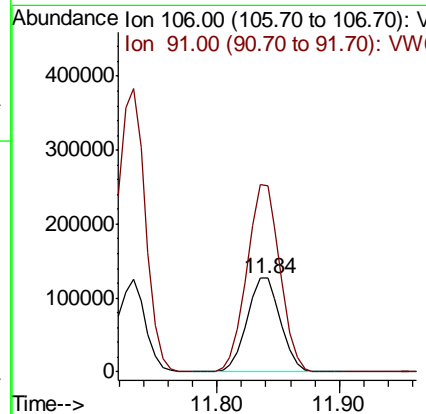
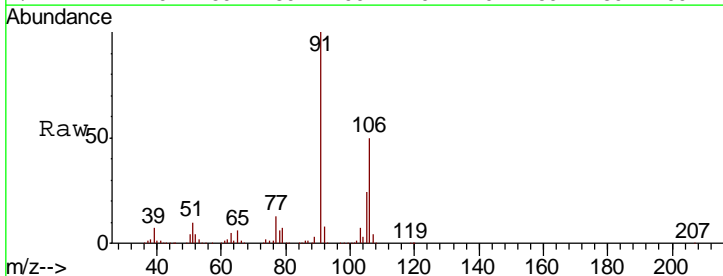
Instrument :
 MSVOA_W
 ClientSampled :

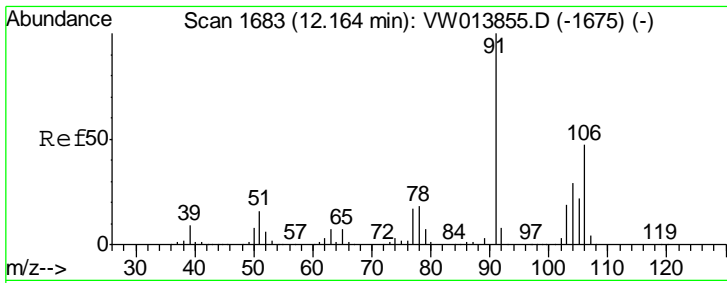
Tgt Ion	Resp	Lower	Upper
91	619953		
106	32.6	21.8	40.4



#54
 m,p-Xylene
 Concen: 24.325 ug/L
 RT: 11.84 min Scan# 1630
 Delta R.T. 0.01 min
 Lab File: VW013876.D
 Acq: 31 Oct 2019 23:28

Tgt Ion	Resp	Lower	Upper
106	240322		
91	198.9	136.6	253.8

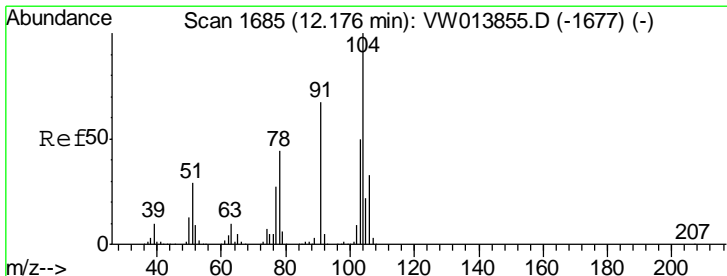
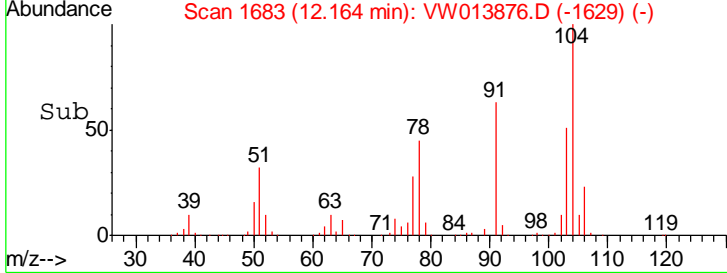
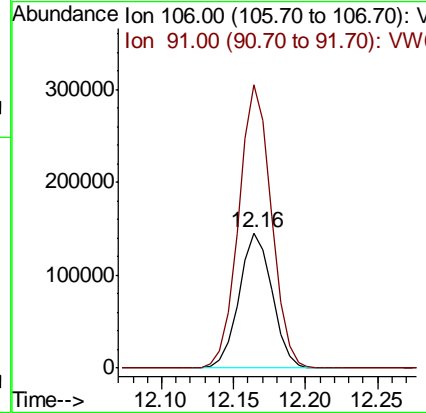
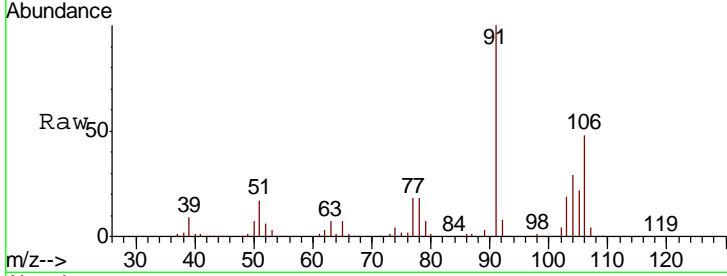




#55
 o-xylene
 Concen: 24.920 ug/L
 RT: 12.16 min Scan# 1683
 Delta R.T. 0.00 min
 Lab File: VW013876.D
 Acq: 31 Oct 2019 23:28

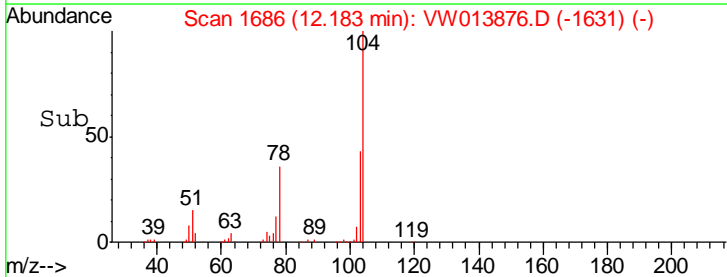
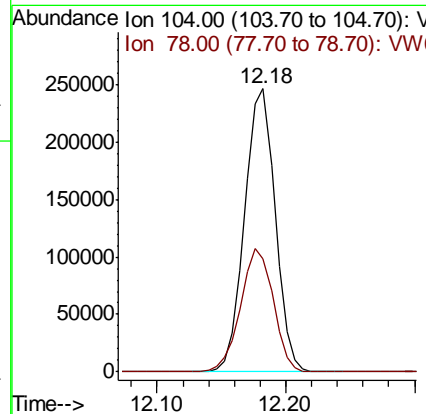
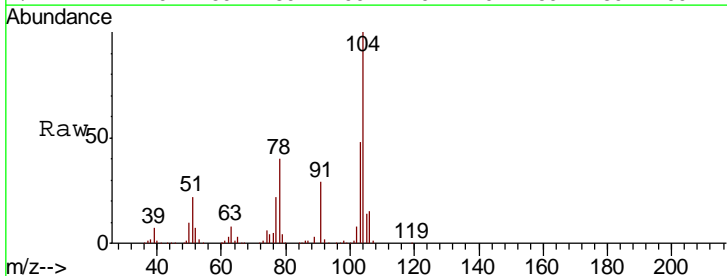
Instrument :
 MSVOA_W
 ClientSampled :

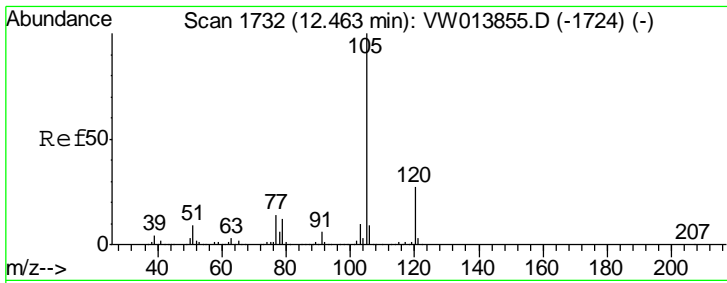
Tgt Ion:106 Resp: 231732
 Ion Ratio Lower Upper
 106 100
 91 209.3 148.0 274.8



#56
 Styrene
 Concen: 25.327 ug/L
 RT: 12.18 min Scan# 1686
 Delta R.T. 0.01 min
 Lab File: VW013876.D
 Acq: 31 Oct 2019 23:28

Tgt Ion:104 Resp: 404100
 Ion Ratio Lower Upper
 104 100
 78 40.0 28.9 53.7





#57

Isopropylbenzene

Concen: 24.816 ug/L

RT: 12.46 min Scan# 1732

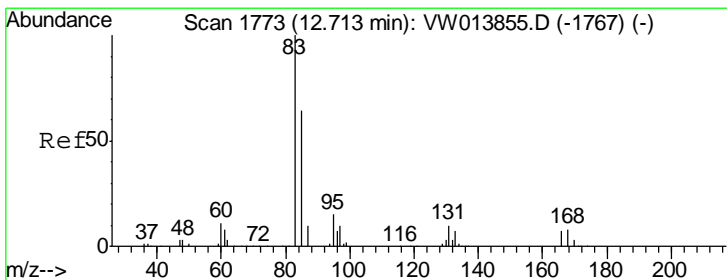
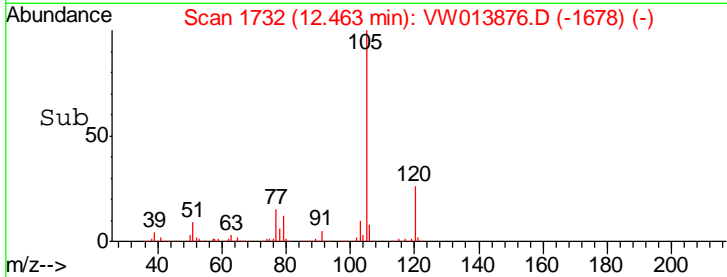
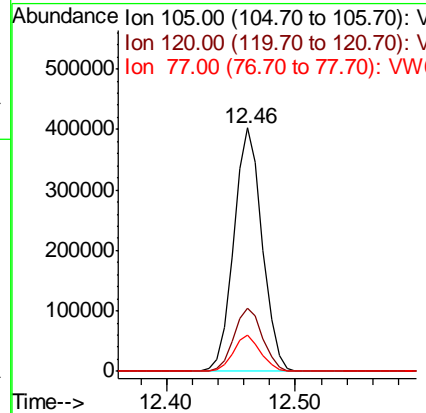
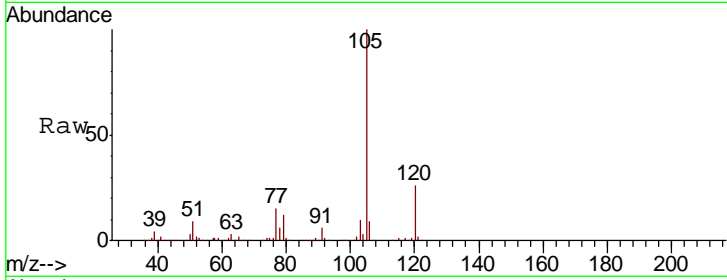
Delta R.T. 0.00 min

Lab File: VW013876.D

Acq: 31 Oct 2019 23:28

Instrument :
MSVOA_W
ClientSampled :

Tgt Ion	Resp	Lower	Upper
105	617573		
120	26.2	21.7	32.5
77	14.3	11.7	17.5



#58

1,1,2,2-Tetrachloroethane

Concen: 25.596 ug/L

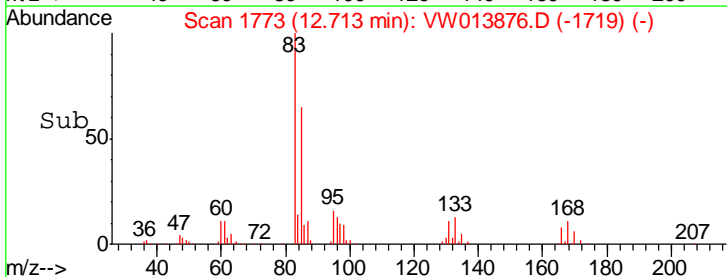
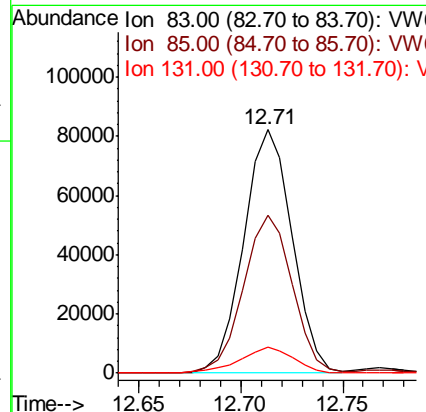
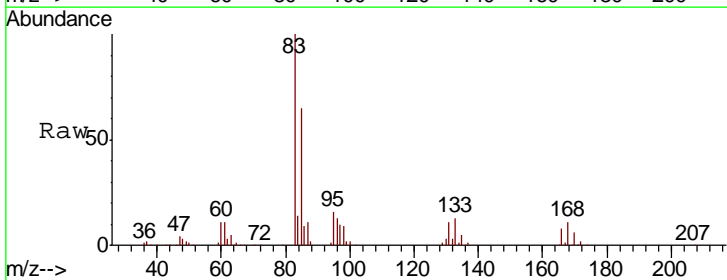
RT: 12.71 min Scan# 1773

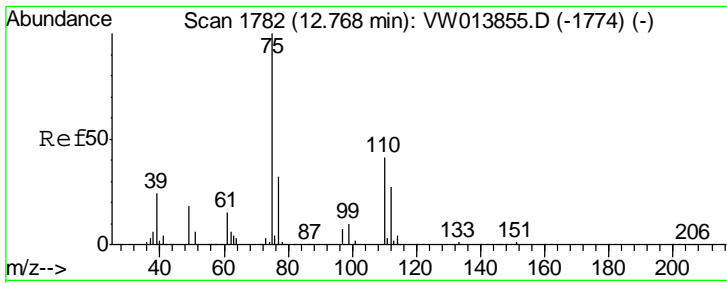
Delta R.T. 0.00 min

Lab File: VW013876.D

Acq: 31 Oct 2019 23:28

Tgt Ion	Resp	Lower	Upper
83	135608		
85	64.6	46.1	85.7
131	10.5	9.0	13.6

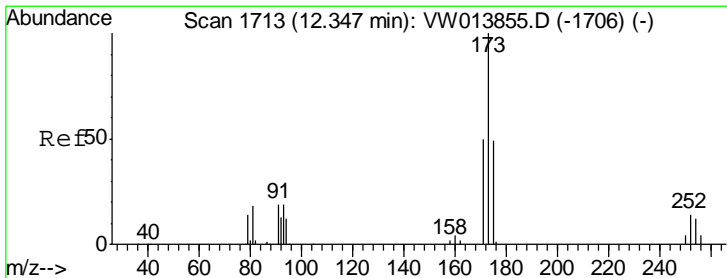
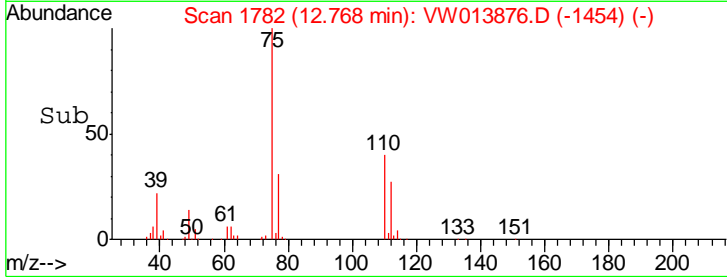
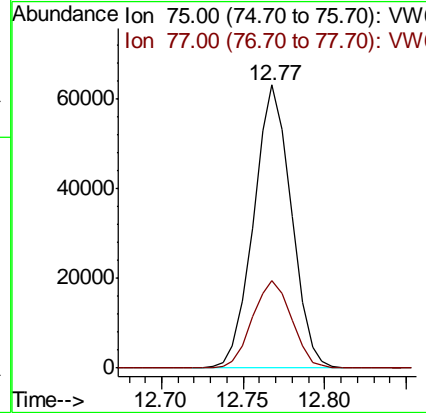
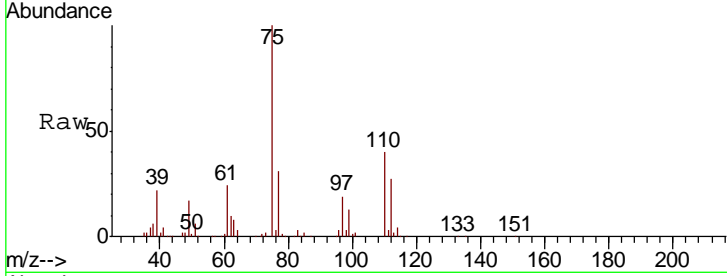




#59
 1,2,3-Trichloropropane
 Concen: 25.187 ug/L
 RT: 12.77 min Scan# 1782
 Delta R.T. 0.00 min
 Lab File: VW013876.D
 Acq: 31 Oct 2019 23:28

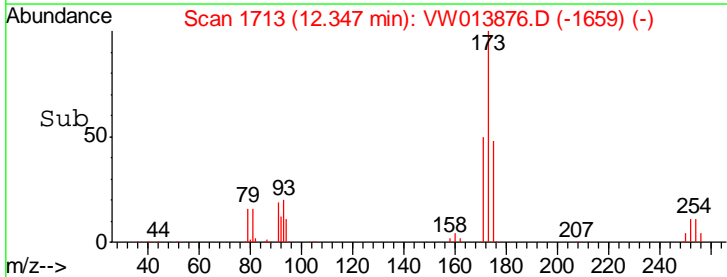
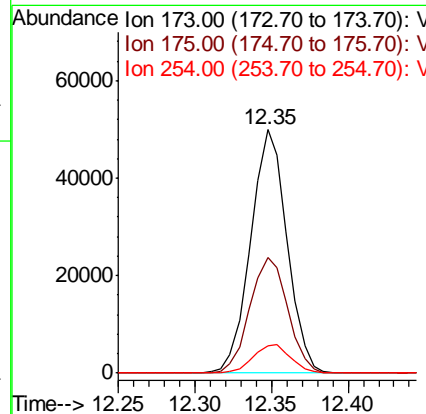
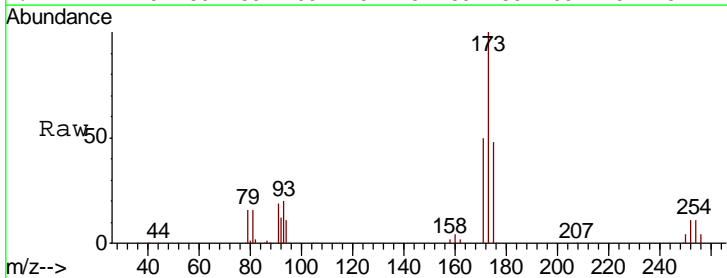
Instrument :
 MSVOA_W
 ClientSampled :

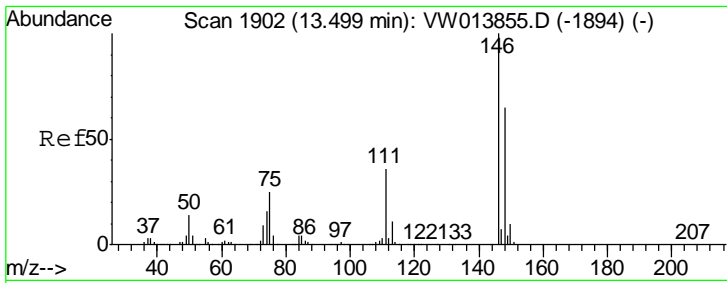
Tgt Ion: 75 Resp: 101675
 Ion Ratio Lower Upper
 75 100
 77 32.0 25.8 38.8



#62
 Bromoform
 Concen: 25.543 ug/L
 RT: 12.35 min Scan# 1713
 Delta R.T. 0.00 min
 Lab File: VW013876.D
 Acq: 31 Oct 2019 23:28

Tgt Ion: 173 Resp: 82424
 Ion Ratio Lower Upper
 173 100
 175 49.6 39.1 58.7
 254 12.1 9.4 14.2

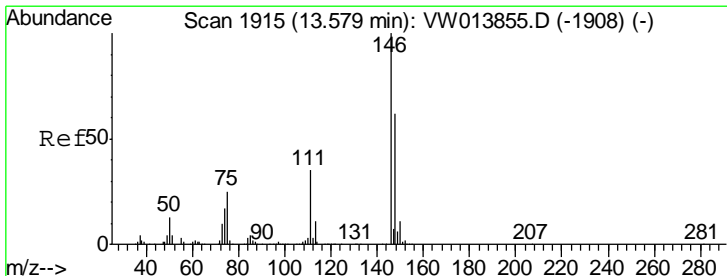
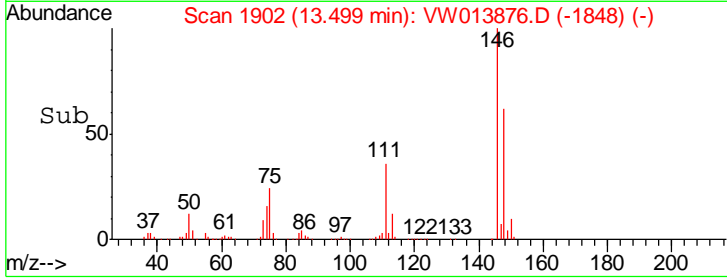
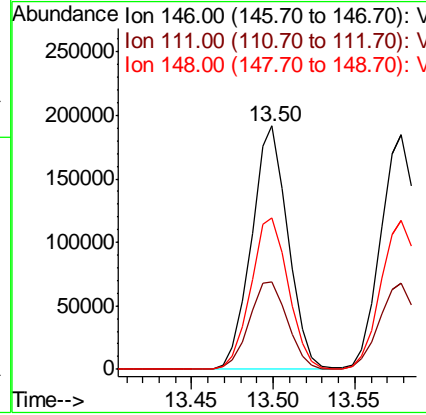
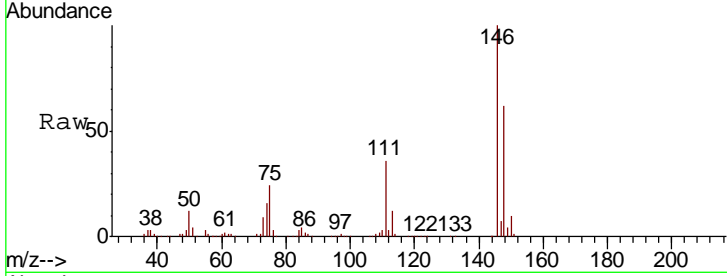




#63
 1,3-Dichlorobenzene
 Concen: 24.660 ug/L
 RT: 13.50 min Scan# 1902
 Delta R.T. 0.00 min
 Lab File: VW013876.D
 Acq: 31 Oct 2019 23:28

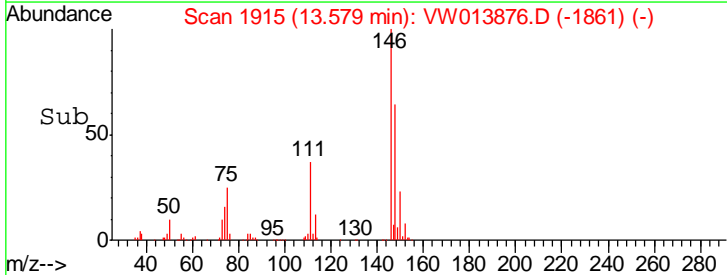
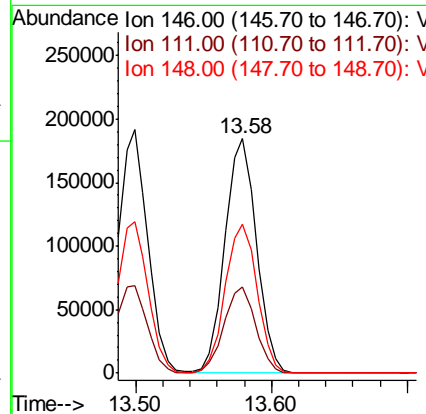
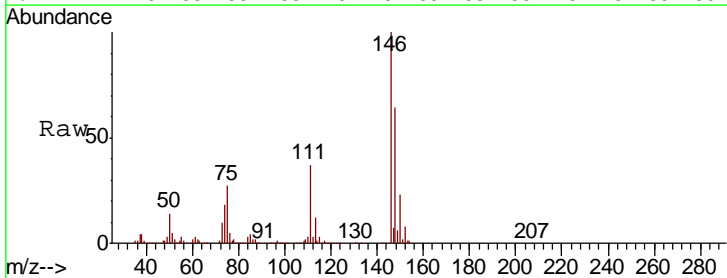
Instrument :
 MSVOA_W
 ClientSampled :

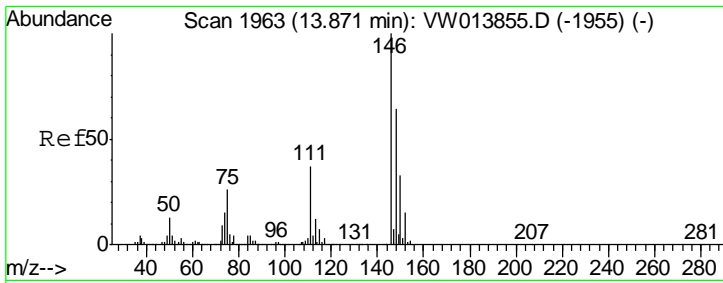
Tgt Ion	Resp	Lower	Upper
146	100		
111	35.8	26.5	49.1
148	62.3	43.7	81.1



#64
 1,4-Dichlorobenzene
 Concen: 24.170 ug/L
 RT: 13.58 min Scan# 1915
 Delta R.T. 0.00 min
 Lab File: VW013876.D
 Acq: 31 Oct 2019 23:28

Tgt Ion	Resp	Lower	Upper
146	100		
111	36.6	25.0	46.4
148	63.8	44.4	82.5

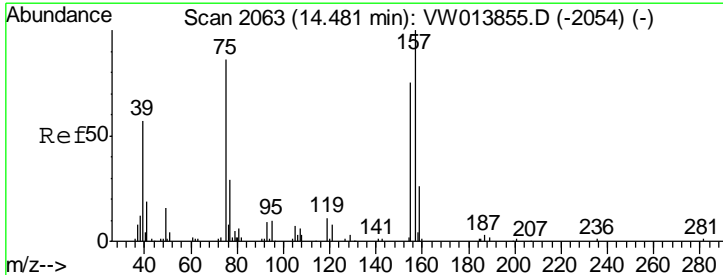
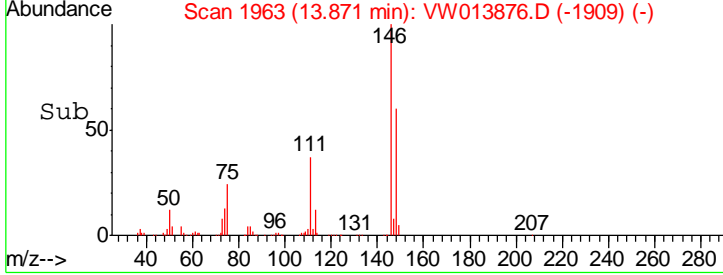
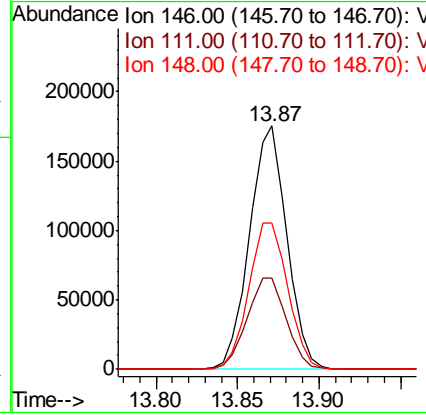
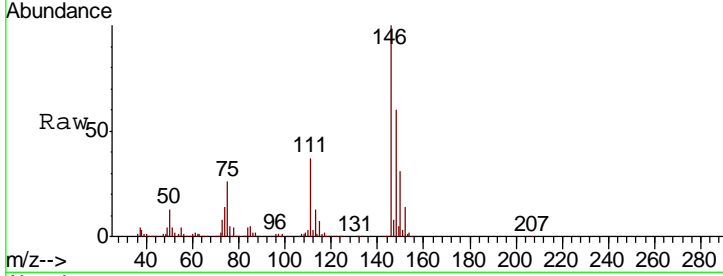




#65
 1,2-Dichlorobenzene
 Concen: 25.013 ug/L
 RT: 13.87 min Scan# 1963
 Delta R.T. 0.00 min
 Lab File: VW013876.D
 Acq: 31 Oct 2019 23:28

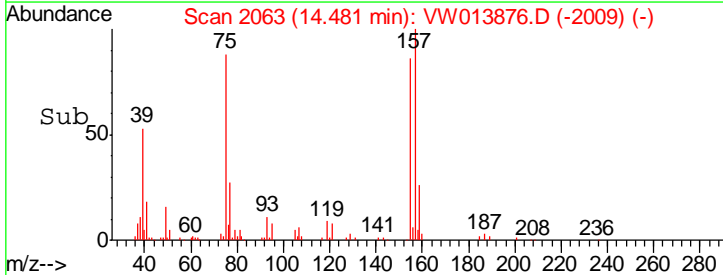
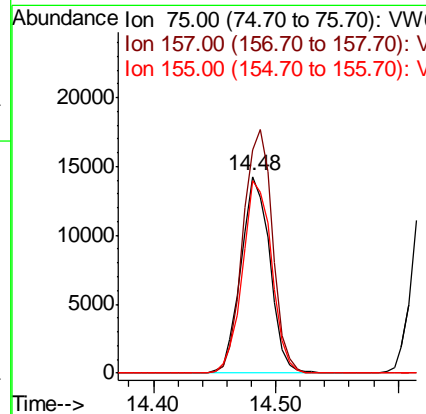
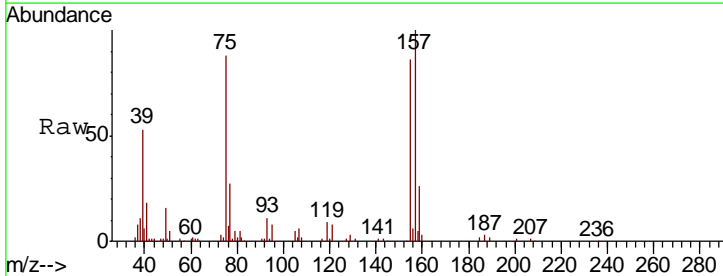
Instrument : MSVOA_W
 ClientSampled :

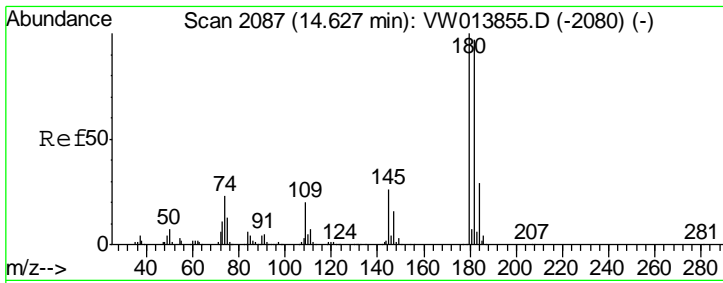
Tgt Ion	Resp	Lower	Upper
146	100		
111	37.4	31.0	46.4
148	59.9	51.8	77.6



#66
 1,2-Dibromo-3-chloropropane
 Concen: 26.407 ug/L
 RT: 14.48 min Scan# 2063
 Delta R.T. 0.00 min
 Lab File: VW013876.D
 Acq: 31 Oct 2019 23:28

Tgt Ion	Resp	Lower	Upper
75	100		
157	113.6	106.2	159.2
155	97.6	78.8	118.2

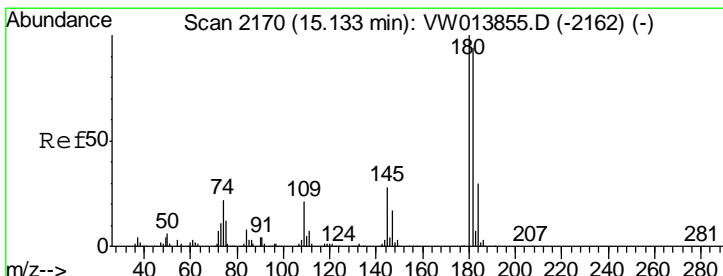
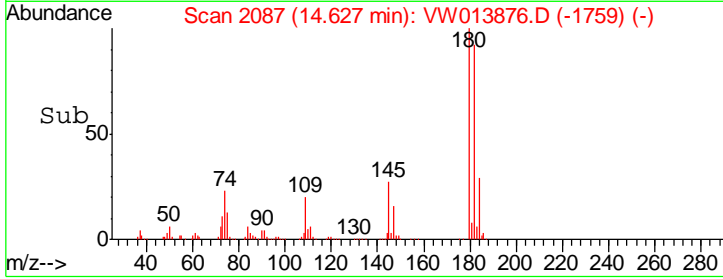
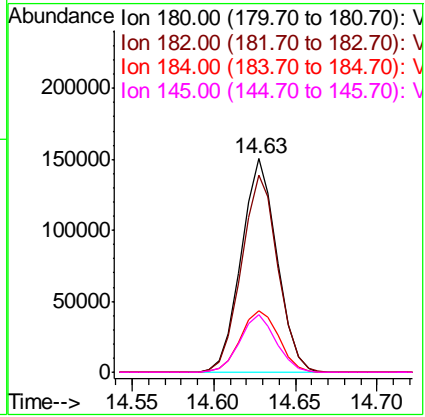
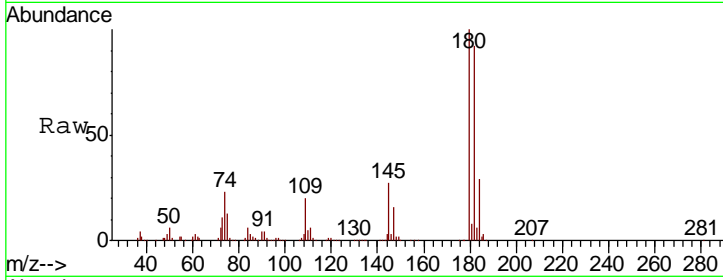




#67
 1,3,5-Trichlorobenzene
 Concen: 24.663 ug/L
 RT: 14.63 min Scan# 2087
 Delta R.T. 0.00 min
 Lab File: VW013876.D
 Acq: 31 Oct 2019 23:28

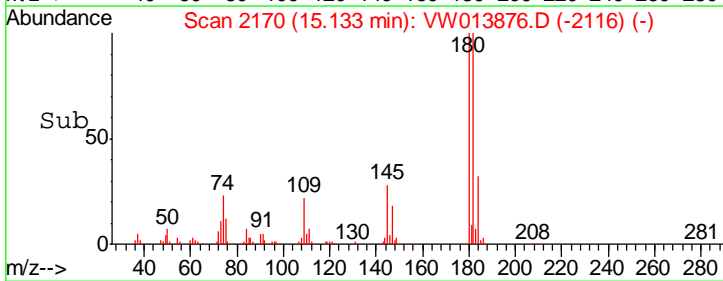
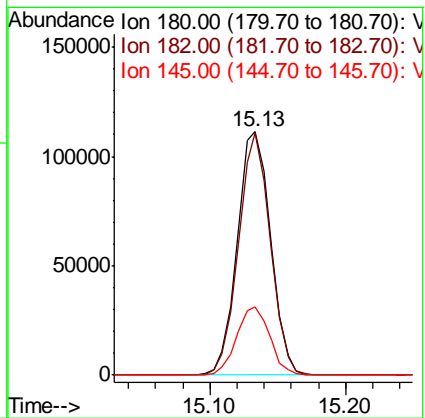
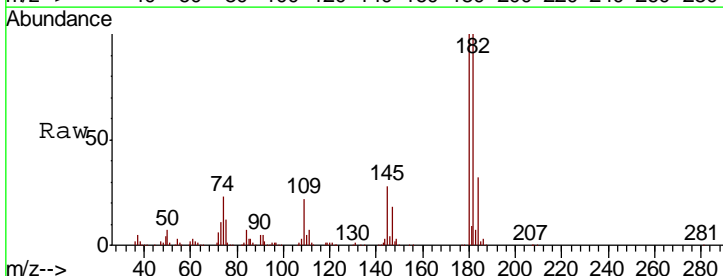
Instrument :
 MSVOA_W
 ClientSampled :

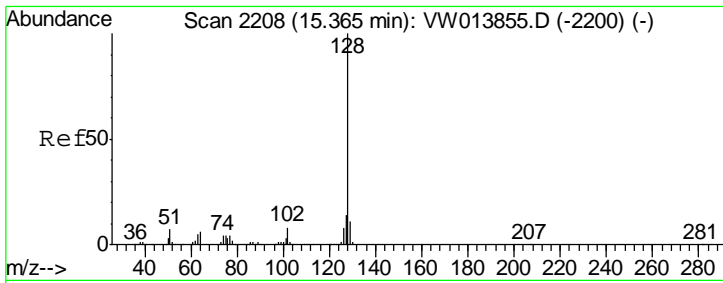
Tgt Ion	Resp	Lower	Upper
180	100		
182	93.8	76.2	114.4
184	30.8	24.1	36.1
145	27.2	21.7	32.5



#68
 1,2,4-trichlorobenzene
 Concen: 25.495 ug/L
 RT: 15.13 min Scan# 2170
 Delta R.T. 0.00 min
 Lab File: VW013876.D
 Acq: 31 Oct 2019 23:28

Tgt Ion	Resp	Lower	Upper
180	100		
182	94.6	74.8	112.2
145	27.9	22.4	33.6

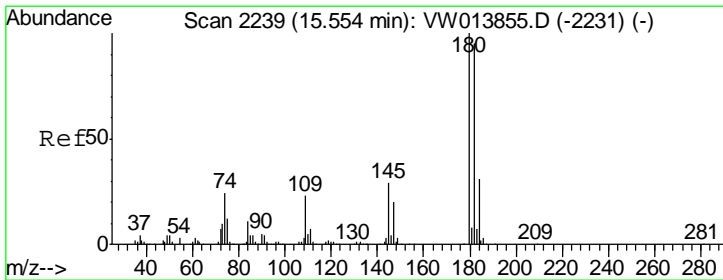
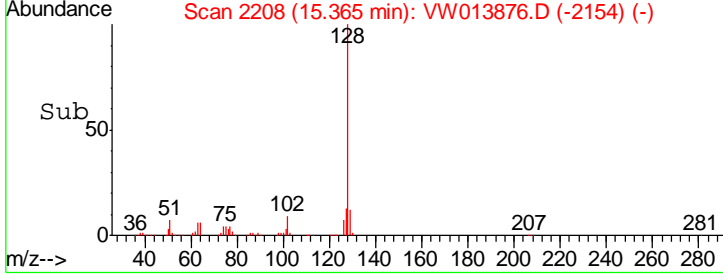
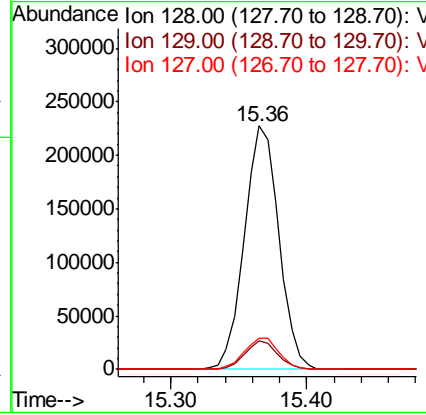
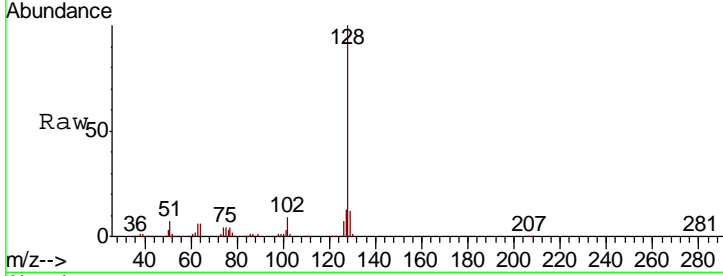




#69
 Naphthalene
 Concen: 28.037 ug/L
 RT: 15.36 min Scan# 2208
 Delta R.T. 0.00 min
 Lab File: VW013876.D
 Acq: 31 Oct 2019 23:28

Instrument : MSVOA_W
 ClientSampled :

Tgt Ion	Resp	Lower	Upper
128	402859		
129	11.1	8.6	13.0
127	12.9	10.5	15.7



#70
 1,2,3-Trichlorobenzene
 Concen: 26.190 ug/L
 RT: 15.55 min Scan# 2239
 Delta R.T. 0.00 min
 Lab File: VW013876.D
 Acq: 31 Oct 2019 23:28

Tgt Ion	Resp	Lower	Upper
180	180864		
182	95.2	78.0	117.0
145	29.8	23.9	35.9

