

Data Path : Z:\VOASRV\HPCHEM1\MSVOA W\DATA\VW103119\
 Data File : VW013880.D
 Acq On : 01 Nov 2019 04:44
 Operator : SY/VA
 Sample : K5552-13
 Misc : 5.74G/10ML/MSVOA W/SOIL
 ALS Vial : 1 Sample Multiplier: 1

Instrument :
 MSVOA_W
 ClientSampleId :

Quant Time: Nov 01 05:58:45 2019
 Quant Method : Z:\VOASRV\HPCHEM1\MSVOA_W\METHOD\SOM2WLM103119S.M
 Quant Title : VOC Analysis
 QLast Update : Fri Nov 01 05:55:58 2019
 Response via : Initial Calibration

Internal Standards	R.T.	QIon	Response	Conc	Units	Dev(Min)
1) 1,4-Difluorobenzene	8.84	114	313279	25.00	ug/L	0.00
28) Chlorobenzene-d5	11.63	117	270404	25.00	ug/L	0.00
60) 1,4-Dichlorobenzene-d4	13.56	152	110211	25.00	ug/L	0.00

System Monitoring Compounds

4) Vinyl Chloride-d3	2.35	65	136074	28.53	ug/L	0.00
Spiked Amount	25.000	Range	30 - 150	Recovery	=	114.12%
7) Chloroethane-d5	2.89	69	110601	29.64	ug/L	0.00
Spiked Amount	25.000	Range	30 - 150	Recovery	=	118.56%
10) 1,1-Dichloroethene-d2	4.02	63	194156	20.34	ug/L	0.00
Spiked Amount	25.000	Range	45 - 110	Recovery	=	81.36%
20) 2-Butanone-d5	7.07	46	74319	44.34	ug/L	0.00
Spiked Amount	50.000	Range	20 - 135	Recovery	=	88.68%
24) Chloroform-d	7.65	84	267956	27.95	ug/L	0.00
Spiked Amount	25.000	Range	40 - 150	Recovery	=	111.80%
26) 1,2-Dichloroethane-d4	8.31	65	138589	26.58	ug/L	0.00
Spiked Amount	25.000	Range	70 - 130	Recovery	=	106.32%
29) Benzene-d6	8.27	84	567299	32.38	ug/L	0.00
Spiked Amount	25.000	Range	20 - 135	Recovery	=	129.52%
33) 1,2-Dichloropropane-d6	9.27	67	170523	32.48	ug/L	0.00
Spiked Amount	25.000	Range	70 - 120	Recovery	=	129.92%#
37) Toluene-d8	10.32	98	498966	29.78	ug/L	0.00
Spiked Amount	25.000	Range	30 - 130	Recovery	=	119.12%
38) trans-1,3-Dichloropropene-	10.58	79	60496	25.19	ug/L	0.00
Spiked Amount	25.000	Range	30 - 135	Recovery	=	100.76%
39) 2-Hexanone-d5	10.93	63	59921	49.58	ug/L	0.00
Spiked Amount	50.000	Range	20 - 135	Recovery	=	99.16%
48) 1,1,2,2-Tetrachloroethane-	12.69	84	116618	24.43	ug/L	0.00
Spiked Amount	25.000	Range	45 - 120	Recovery	=	97.72%
61) 1,2-Dichlorobenzene-d4	13.85	152	122621	28.89	ug/L	0.00
Spiked Amount	25.000	Range	75 - 120	Recovery	=	115.56%

Target Compounds

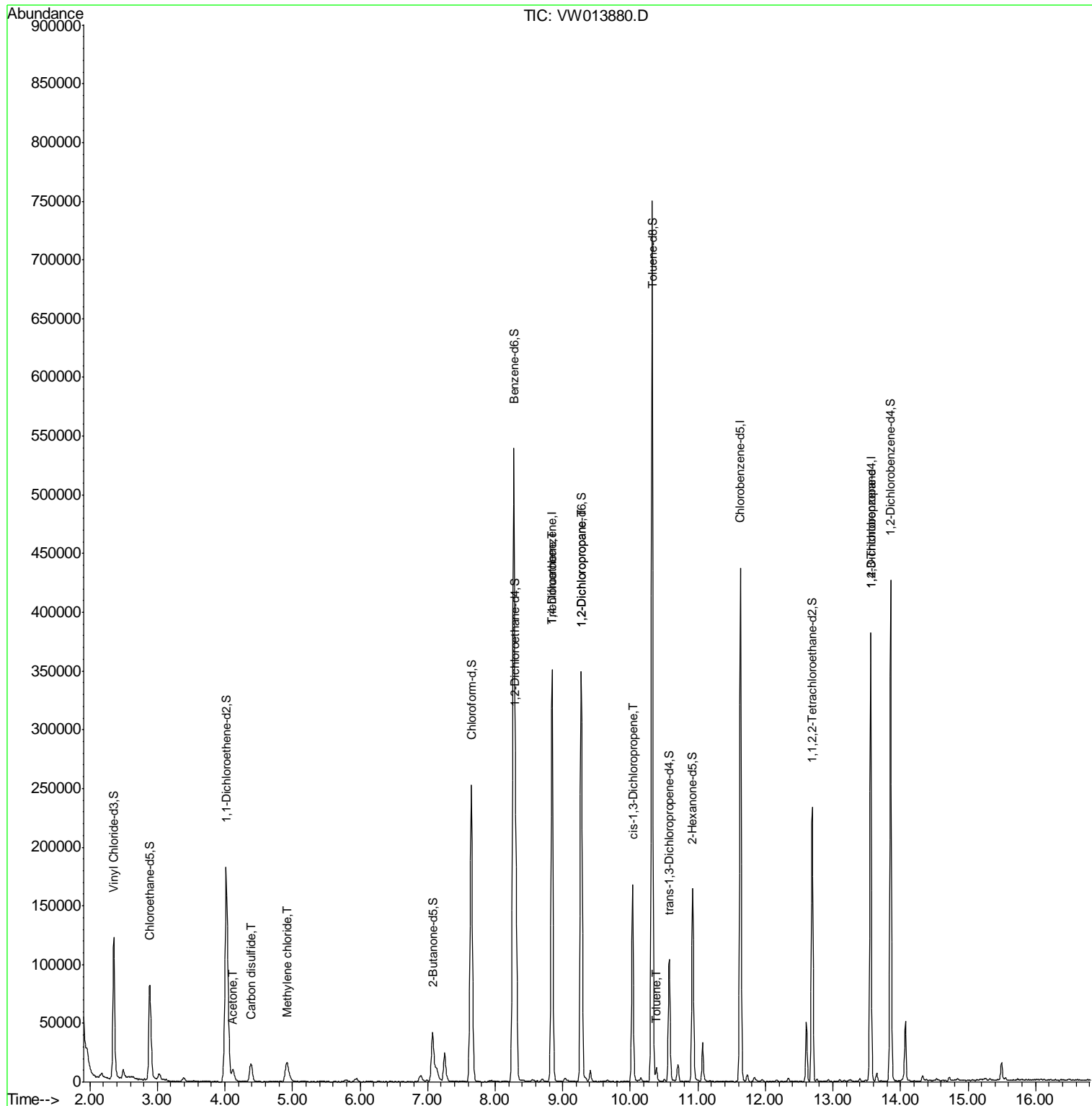
Target Compounds	R.T.	QIon	Response	Conc	Units	Ovalue
13) Acetone	4.12	43	17082	10.889	ug/L	71
14) Carbon disulfide	4.38	76	24267	1.610	ug/L	97
16) Methylene chloride	4.93	84	14524	2.371	ug/L	93
35) Trichloroethene	8.84	95	8854	1.789	ug/L #	2
40) 1,2-Dichloropropane	9.27	63	17682	3.817	ug/L #	86
42) cis-1,3-Dichloropropene	10.03	75	3827	0.526	ug/L #	76
44) Toluene	10.39	91	8007	0.395	ug/L	90
59) 1,2,3-Trichloropropane	13.56	75	11379	3.185	ug/L	91

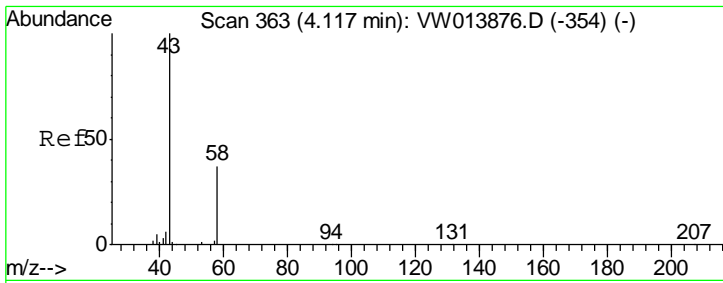
(#) = qualifier out of range (m) = manual integration (+) = signals summed

Data Path : Z:\VOASRV\HPCHEM1\MSVOA W\DATA\VW103119\
 Data File : VW013880.D
 Acq On : 01 Nov 2019 04:44
 Operator : SY/VA
 Sample : K5552-13
 Misc : 5.74G/10ML/MSVOA W/SOIL
 ALS Vial : 1 Sample Multiplier: 1

Instrument :
 MSVOA_W
 Client Sampled :

Quant Time: Nov 01 05:58:45 2019
 Quant Method : Z:\VOASRV\HPCHEM1\MSVOA_W\METHOD\SOM2WLM103119S.M
 Quant Title : VOC Analysis
 QLast Update : Fri Nov 01 05:55:58 2019
 Response via : Initial Calibration

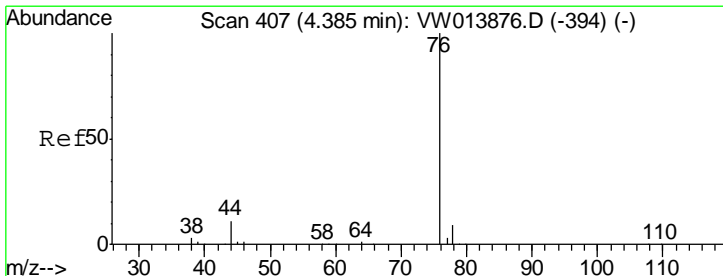
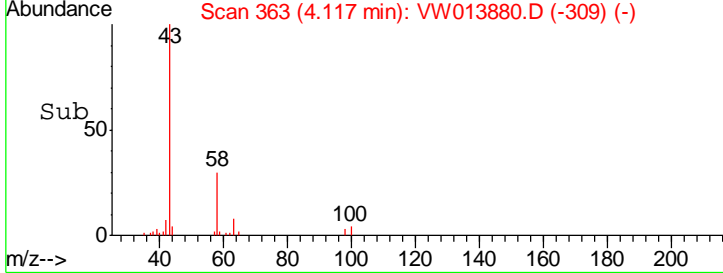
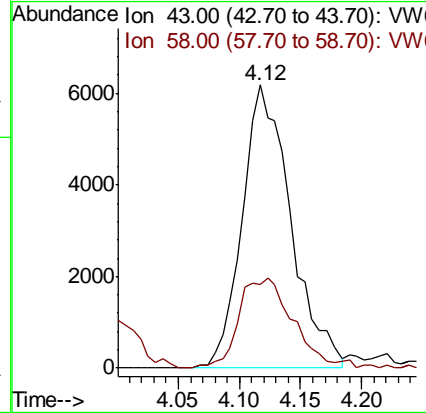
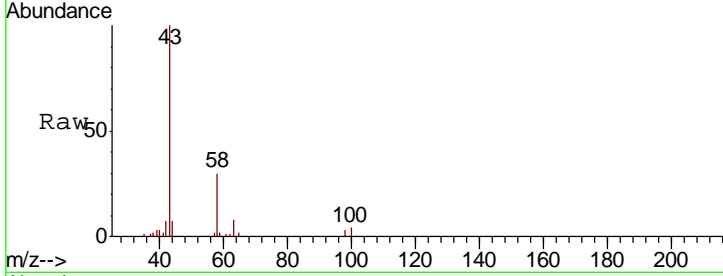




#13
 Acetone
 Concen: 10.889 ug/L
 RT: 4.12 min Scan# 363
 Delta R.T. -0.00 min
 Lab File: VW013880.D
 Acq: 01 Nov 2019 04:44

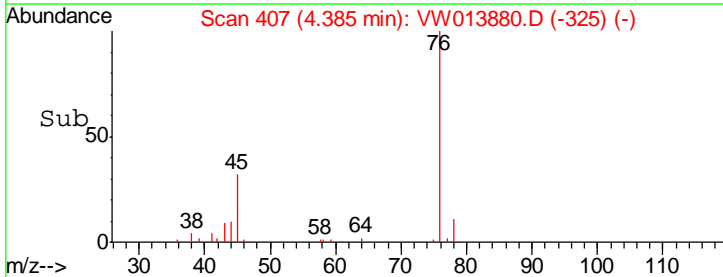
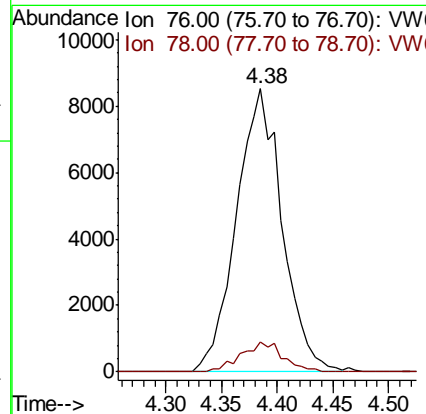
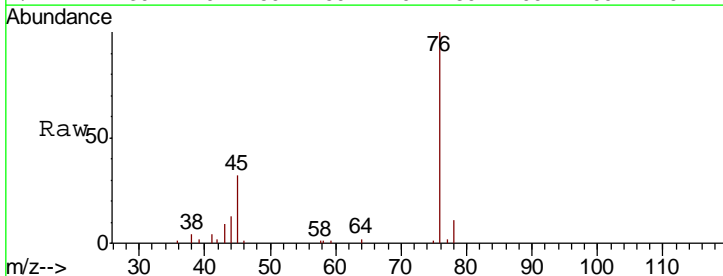
Instrument :
 MSVOA_W
 ClientSampled :

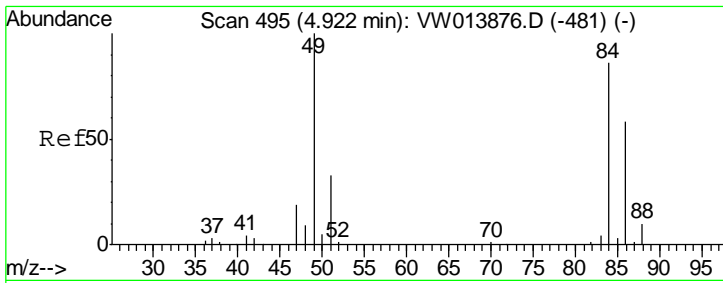
Tgt Ion	Resp	Lower	Upper
43	17082		
58	15.7	0.0	63.4



#14
 Carbon disulfide
 Concen: 1.610 ug/L
 RT: 4.38 min Scan# 407
 Delta R.T. -0.00 min
 Lab File: VW013880.D
 Acq: 01 Nov 2019 04:44

Tgt Ion	Resp	Lower	Upper
76	24267		
78	10.6	7.8	11.6

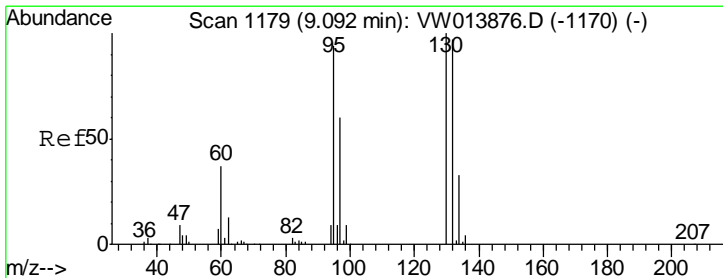
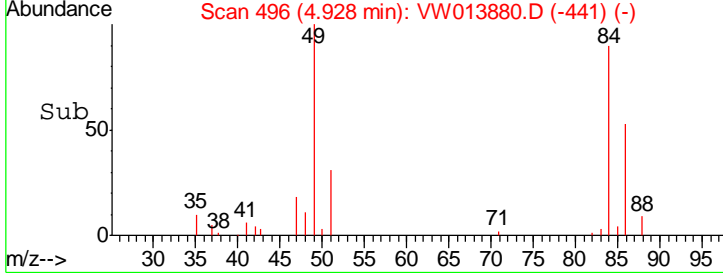
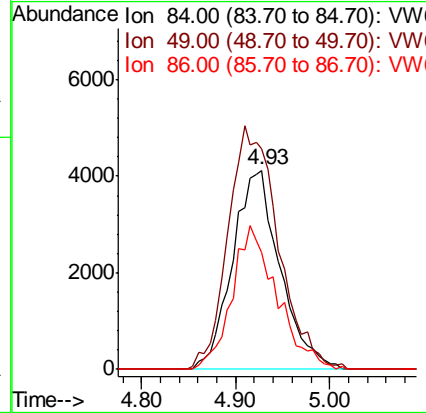
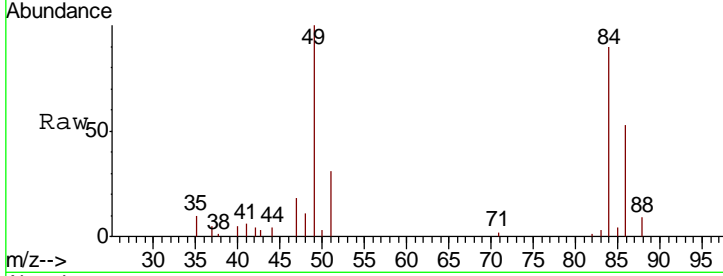




#16
 Methylene chloride
 Concen: 2.371 ug/L
 RT: 4.93 min Scan# 496
 Delta R.T. 0.01 min
 Lab File: VW013880.D
 Acq: 01 Nov 2019 04:44

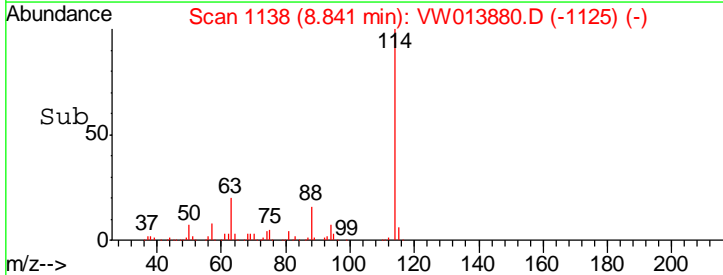
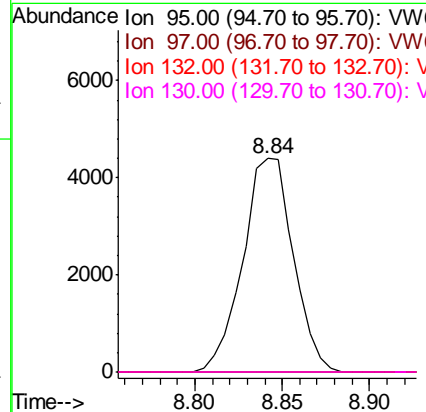
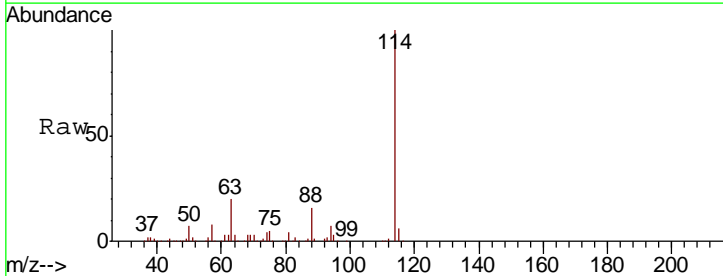
Instrument :
 MSVOA_W
 ClientSampled :

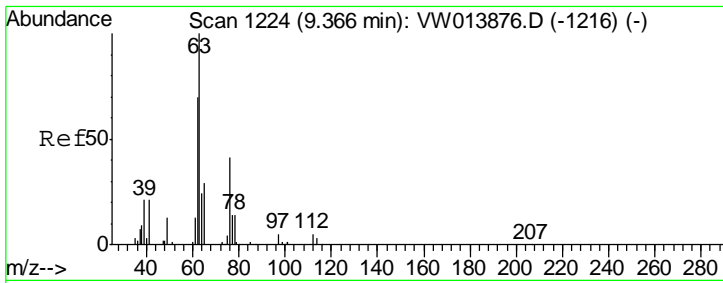
Tgt Ion	Resp	Lower	Upper
84	14524		
49	110.9	82.2	152.6
86	58.5	45.6	84.8



#35
 Trichloroethene
 Concen: 1.789 ug/L
 RT: 8.84 min Scan# 1138
 Delta R.T. -0.25 min
 Lab File: VW013880.D
 Acq: 01 Nov 2019 04:44

Tgt Ion	Resp	Lower	Upper
95	8854		
97	0.0	45.0	83.6#
132	0.0	72.4	134.4#
130	0.0	76.6	142.3#

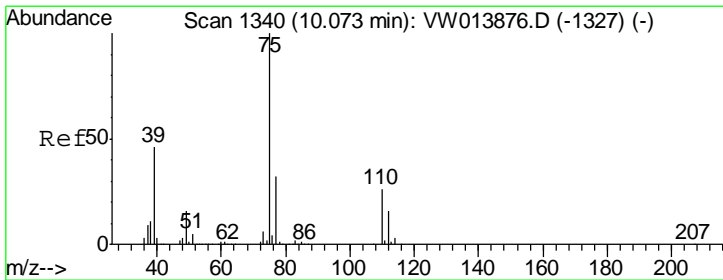
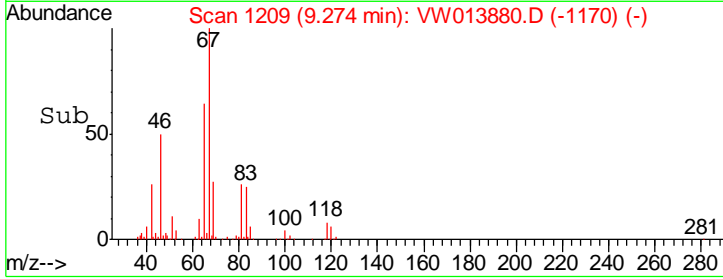
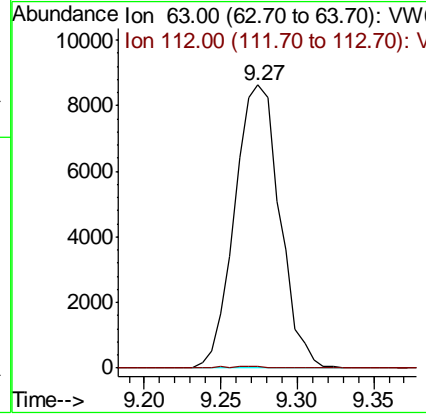
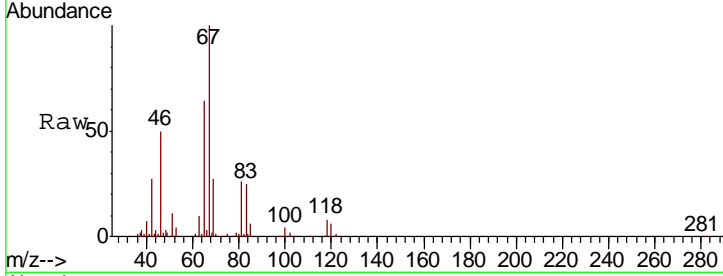




#40
 1,2-Dichloropropane
 Concen: 3.817 ug/L
 RT: 9.27 min Scan# 1209
 Delta R.T. -0.09 min
 Lab File: VW013880.D
 Acq: 01 Nov 2019 04:44

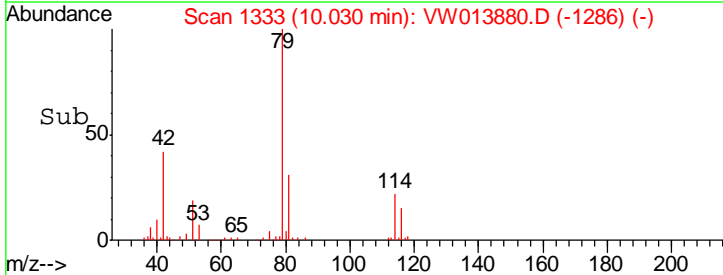
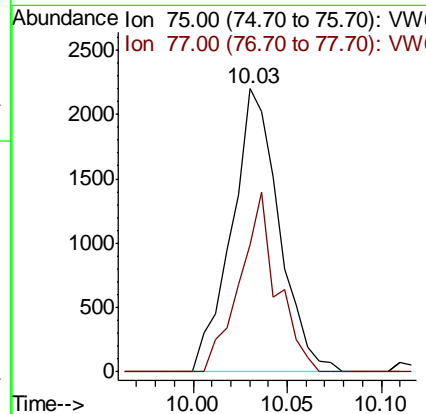
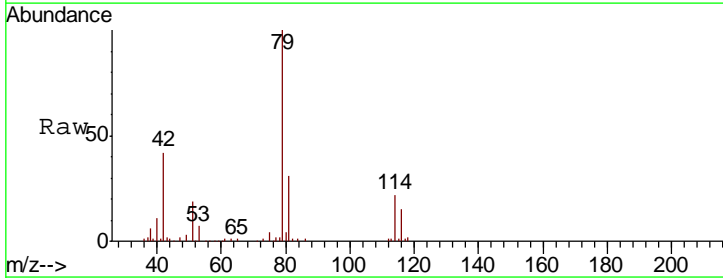
Instrument :
 MSVOA_W
 ClientSampled :

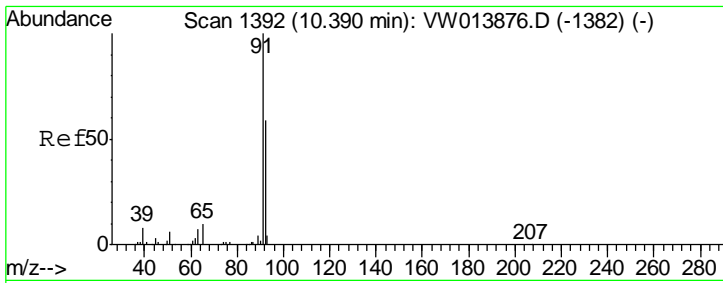
Tgt Ion	Resp	Lower	Upper
63	17682		
112	0.4	4.1	6.1#



#42
 cis-1,3-Dichloropropene
 Concen: 0.526 ug/L
 RT: 10.03 min Scan# 1333
 Delta R.T. -0.04 min
 Lab File: VW013880.D
 Acq: 01 Nov 2019 04:44

Tgt Ion	Resp	Lower	Upper
75	3827		
77	44.9	22.1	41.1#

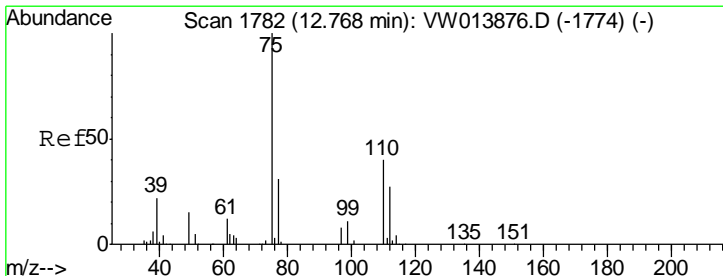
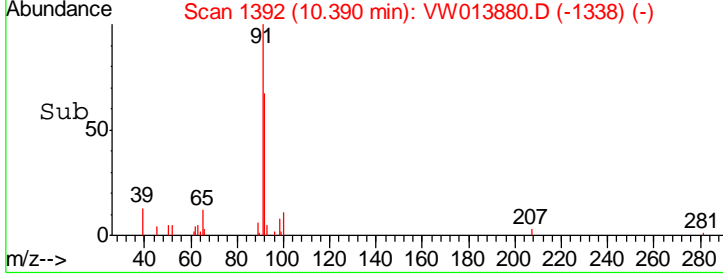
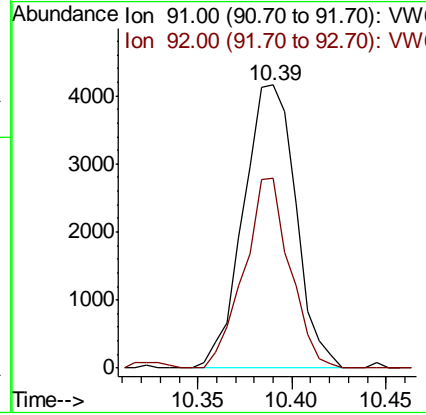
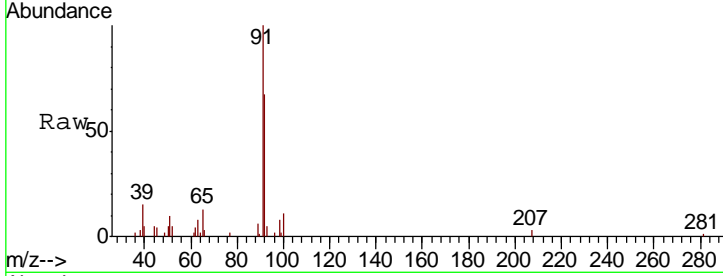




#44
 Toluene
 Concen: 0.395 ug/L
 RT: 10.39 min Scan# 1392
 Delta R.T. -0.00 min
 Lab File: VW013880.D
 Acq: 01 Nov 2019 04:44

Instrument : MSVOA_W
 ClientSampled :

Tgt Ion	Resp	Lower	Upper
91	100		
92	67.2	42.0	78.0



#59
 1,2,3-Trichloropropane
 Concen: 3.185 ug/L
 RT: 13.56 min Scan# 1912
 Delta R.T. 0.79 min
 Lab File: VW013880.D
 Acq: 01 Nov 2019 04:44

Tgt Ion	Resp	Lower	Upper
75	100		
77	37.1	25.8	38.8

