

Data Path : Z:\voasrv\HPCHEM1\MSVOA_W\Data\VW103123\
 Data File : VW027485.D
 Acq On : 31 Oct 2023 15:02
 Operator : SY/MD
 Sample : VIBLK561
 Misc : 5.00g/10mL/MSVOA_W/SOIL
 ALS Vial : 1 Sample Multiplier: 1

Instrument :
 MSVOA_W
 ClientSampleId :
 VIBLK561

Integration Parameters: LSCINT.P

Integrator: RTE
 Smoothing : OFF
 Sampling : 1
 Start Thrs : 0.2
 Stop Thrs : 0

Filtering: 5
 Min Area: 0 % of largest Peak
 Max Peaks: 100
 Peak Location: TOP

If leading or trailing edge < 100 prefer < Baseline drop else tangent >
 Peak separation: 5

Method : Z:\voasrv\HPCHEM1\MSVOA_W\Method\SFAMWLM101123SMA.M
 Title : SFAM01.0

Signal : TIC: VW027485.D\data.ms

peak #	R.T. min	first scan	max scan	last scan	PK TY	peak height	corr. area	corr. % max.	% of total
1	2.363	72	78	87	rBV	36603	89806	6.86%	0.899%
2	2.893	159	165	181	rVB	36216	97236	7.43%	0.974%
3	3.405	242	249	256	rVB5	4924	12715	0.97%	0.127%
4	3.600	273	281	284	rBV10	1486	2873	0.22%	0.029%
5	3.728	300	302	306	rBV5	1763	2318	0.18%	0.023%
6	4.021	337	350	367	rBV	96015	293128	22.39%	2.935%
7	4.405	407	413	418	rBV6	2869	7440	0.57%	0.074%
8	4.746	467	469	472	rVB4	1168	1463	0.11%	0.015%
9	4.923	486	498	509	rBV	24426	86018	6.57%	0.861%
10	5.088	522	525	526	rBV3	1440	1600	0.12%	0.016%
11	5.118	526	530	532	rVV4	2365	3017	0.23%	0.030%
12	5.149	532	535	536	rVV3	1957	2145	0.16%	0.021%
13	5.167	536	538	542	rVV5	2208	3679	0.28%	0.037%
14	5.216	545	546	551	rVB5	1388	1537	0.12%	0.015%
15	5.429	578	581	585	rVB6	1745	2202	0.17%	0.022%
16	5.490	588	591	594	rBV6	1224	1777	0.14%	0.018%
17	5.752	625	634	635	rBV8	3569	6705	0.51%	0.067%
18	5.807	642	643	648	rVB5	1473	1541	0.12%	0.015%
19	5.947	658	666	676	rVV5	12668	38680	2.95%	0.387%
20	6.264	716	718	721	rVB4	1420	1792	0.14%	0.018%
21	6.752	795	798	805	rVB8	2242	4284	0.33%	0.043%
22	6.911	822	824	828	rVV5	1383	1550	0.12%	0.016%
23	7.081	843	852	853	rBV	35092	65338	4.99%	0.654%
24	7.136	856	861	879	rVB	87125	252468	19.29%	2.528%
25	7.490	916	919	923	rBV6	972	1664	0.13%	0.017%
26	7.648	935	945	957	rVB	173191	426707	32.60%	4.272%
27	7.971	996	998	1001	rVV4	1403	1600	0.12%	0.016%
28	8.045	1006	1010	1012	rVV4	1213	1748	0.13%	0.018%
29	8.276	1032	1048	1065	rBV3	386475	1279904	97.77%	12.814%
30	8.551	1091	1093	1096	rVB4	1459	1435	0.11%	0.014%
31	8.642	1106	1108	1111	rVB4	1753	1709	0.13%	0.017%
32	8.673	1111	1113	1115	rBV3	1580	1804	0.14%	0.018%
33	8.843	1130	1141	1153	rBV	508811	1012046	77.31%	10.133%
34	9.081	1174	1180	1186	rVB	2825	6595	0.50%	0.066%
35	9.130	1186	1188	1196	rVB9	1324	2989	0.23%	0.030%
36	9.197	1196	1199	1202	rVB5	1757	2125	0.16%	0.021%

Data Path : Z:\voasrv\HPCHEM1\MSVOA_W\Data\VW103123\
 Data File : VW027485.D
 Acq On : 31 Oct 2023 15:02
 Operator : SY/MD
 Sample : VIBLK561
 Misc : 5.00g/10mL/MSVOA_W/SOIL
 ALS Vial : 1 Sample Multiplier: 1

Instrument :
 MSVOA_W
 ClientSampleId :
 VIBLK561

Integration Parameters: LSCINT.P

Integrator: RTE
 Smoothing : OFF
 Sampling : 1
 Start Thrs: 0.2
 Stop Thrs : 0

Filtering: 5
 Min Area: 0 % of largest Peak
 Max Peaks: 100
 Peak Location: TOP

If leading or trailing edge < 100 prefer < Baseline drop else tangent >
 Peak separation: 5

Method : Z:\voasrv\HPCHEM1\MSVOA_W\Method\SFAMWLM101123SMA.M
 Title : SFAM01.0

37	9.270	1202	1211	1222	rBV	241724	506156	38.67%	5.068%
38	9.471	1241	1244	1248	rVB5	1818	2479	0.19%	0.025%
39	9.666	1271	1276	1280	rBV7	3215	7405	0.57%	0.074%
40	9.758	1287	1291	1296	rVB7	1776	2832	0.22%	0.028%
41	9.892	1307	1313	1319	rBV7	2201	5592	0.43%	0.056%
42	9.971	1323	1326	1328	rVV4	2588	3231	0.25%	0.032%
43	10.032	1330	1336	1344	rVV	118811	217493	16.61%	2.178%
44	10.124	1348	1351	1352	rBV3	2495	2019	0.15%	0.020%
45	10.319	1376	1383	1392	rBV	451984	807351	61.68%	8.083%
46	10.575	1419	1425	1434	rBV	69510	126124	9.63%	1.263%
47	10.703	1438	1446	1455	rBV	136527	253516	19.37%	2.538%
48	10.849	1464	1470	1475	rBV4	6725	12434	0.95%	0.124%
49	10.922	1476	1482	1493	rBV	89556	160092	12.23%	1.603%
50	10.995	1493	1494	1498	rVB4	1758	2132	0.16%	0.021%
51	11.062	1500	1505	1510	rBV	16529	28071	2.14%	0.281%
52	11.172	1519	1523	1527	rVB2	7677	10767	0.82%	0.108%
53	11.300	1543	1544	1547	rBV3	1601	1884	0.14%	0.019%
54	11.343	1547	1551	1555	rBV7	1311	2521	0.19%	0.025%
55	11.434	1555	1566	1574	rVB2	27649	56052	4.28%	0.561%
56	11.629	1590	1598	1610	rBV	738230	1244446	95.07%	12.459%
57	11.727	1612	1614	1618	rVV5	2765	3846	0.29%	0.039%
58	11.837	1628	1632	1636	rVB7	3107	4779	0.37%	0.048%
59	11.934	1646	1648	1652	rVB5	1725	2037	0.16%	0.020%
60	12.044	1664	1666	1670	rBV4	1293	2177	0.17%	0.022%
61	12.160	1682	1685	1686	rBV3	1917	2432	0.19%	0.024%
62	12.239	1693	1698	1699	rBV4	1079	1656	0.13%	0.017%
63	12.471	1730	1736	1741	rVB4	7945	14423	1.10%	0.144%
64	12.605	1750	1758	1766	rVV	94806	167033	12.76%	1.672%
65	12.690	1766	1772	1782	rBV	200399	337036	25.75%	3.374%
66	12.788	1786	1788	1790	rVB3	1699	1427	0.11%	0.014%
67	12.818	1790	1793	1795	rBV4	1496	1611	0.12%	0.016%
68	12.934	1804	1812	1817	rBV7	5453	10643	0.81%	0.107%
69	13.032	1820	1828	1832	rVB10	3198	8105	0.62%	0.081%
70	13.068	1832	1834	1836	rBV2	1677	1837	0.14%	0.018%
71	13.239	1860	1862	1864	rVV3	1967	1841	0.14%	0.018%
72	13.288	1866	1870	1880	rVB2	9087	15083	1.15%	0.151%
73	13.410	1886	1890	1893	rVB6	1566	2596	0.20%	0.026%
74	13.470	1895	1900	1902	rBV5	2871	4043	0.31%	0.040%
75	13.556	1907	1914	1927	rVB	808050	1309035	100.00%	13.106%
76	13.763	1942	1948	1950	rBV7	3584	6135	0.47%	0.061%

Data Path : Z:\voasrv\HPCHEM1\MSVOA_W\Data\VW103123\
 Data File : VW027485.D
 Acq On : 31 Oct 2023 15:02
 Operator : SY/MD
 Sample : VIBLK561
 Misc : 5.00g/10mL/MSVOA_W/SOIL
 ALS Vial : 1 Sample Multiplier: 1

Instrument :
 MSVOA_W
 ClientSampleId :
 VIBLK561

Integration Parameters: LSCINT.P
 Integrator: RTE
 Smoothing : OFF
 Sampling : 1
 Start Thrs: 0.2
 Stop Thrs : 0
 Filtering: 5
 Min Area: 0 % of largest Peak
 Max Peaks: 100
 Peak Location: TOP

If leading or trailing edge < 100 prefer < Baseline drop else tangent >
 Peak separation: 5

Method : Z:\voasrv\HPCHEM1\MSVOA_W\Method\SFAMWLM101123SMA.M
 Title : SFAM01.0

77	13.848	1956	1962	1970	rBV	437220	695733	53.15%	6.966%
78	14.007	1983	1988	1991	rBV6	2210	3393	0.26%	0.034%
79	14.062	1991	1997	2006	rVB	52758	88685	6.77%	0.888%
80	14.190	2016	2018	2022	rVB5	1906	2424	0.19%	0.024%
81	14.300	2031	2036	2037	rBV4	3491	4365	0.33%	0.044%
82	14.434	2055	2058	2059	rBV3	1249	1458	0.11%	0.015%
83	14.458	2059	2062	2064	rVV4	1529	1971	0.15%	0.020%
84	14.489	2064	2067	2069	rVV3	2008	2496	0.19%	0.025%
85	14.623	2085	2089	2092	rBV5	2106	2796	0.21%	0.028%
86	14.714	2101	2104	2108	rVB5	5801	7413	0.57%	0.074%
87	14.775	2111	2114	2116	rBV4	1692	2106	0.16%	0.021%
88	15.031	2153	2156	2159	rVB5	1492	2157	0.16%	0.022%
89	15.092	2159	2166	2169	rBV9	2735	6048	0.46%	0.061%
90	15.360	2204	2210	2215	rBV10	3177	8645	0.66%	0.087%
91	15.427	2216	2221	2226	rVV	20151	36152	2.76%	0.362%
92	15.482	2226	2230	2235	rVV2	9307	17312	1.32%	0.173%
93	15.543	2237	2240	2245	rVB7	2614	4849	0.37%	0.049%
94	15.677	2259	2262	2263	rBV3	2390	2623	0.20%	0.026%
95	15.757	2271	2275	2276	rBV4	2380	2707	0.21%	0.027%
96	15.842	2284	2289	2291	rVB6	2500	3444	0.26%	0.034%
97	16.031	2317	2320	2321	rBV3	1620	1434	0.11%	0.014%
98	16.208	2347	2349	2353	rVB5	1697	1938	0.15%	0.019%
99	16.488	2389	2395	2400	rVB4	7548	14268	1.09%	0.143%
100	16.756	2436	2439	2440	rBV3	1302	1555	0.12%	0.016%

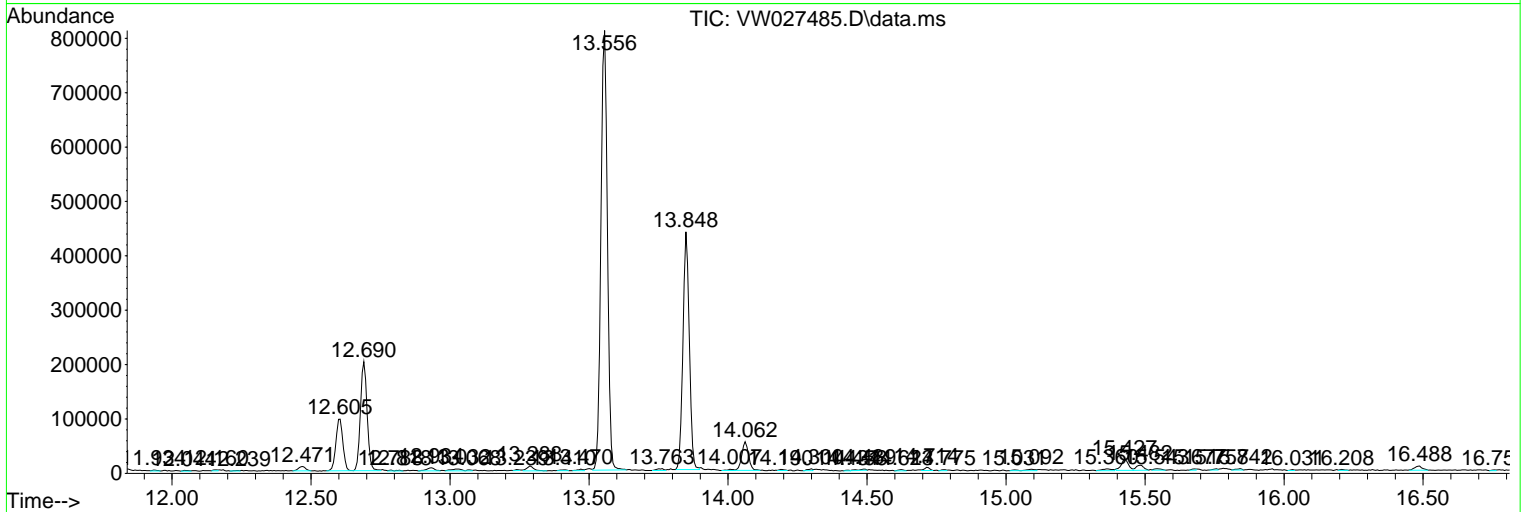
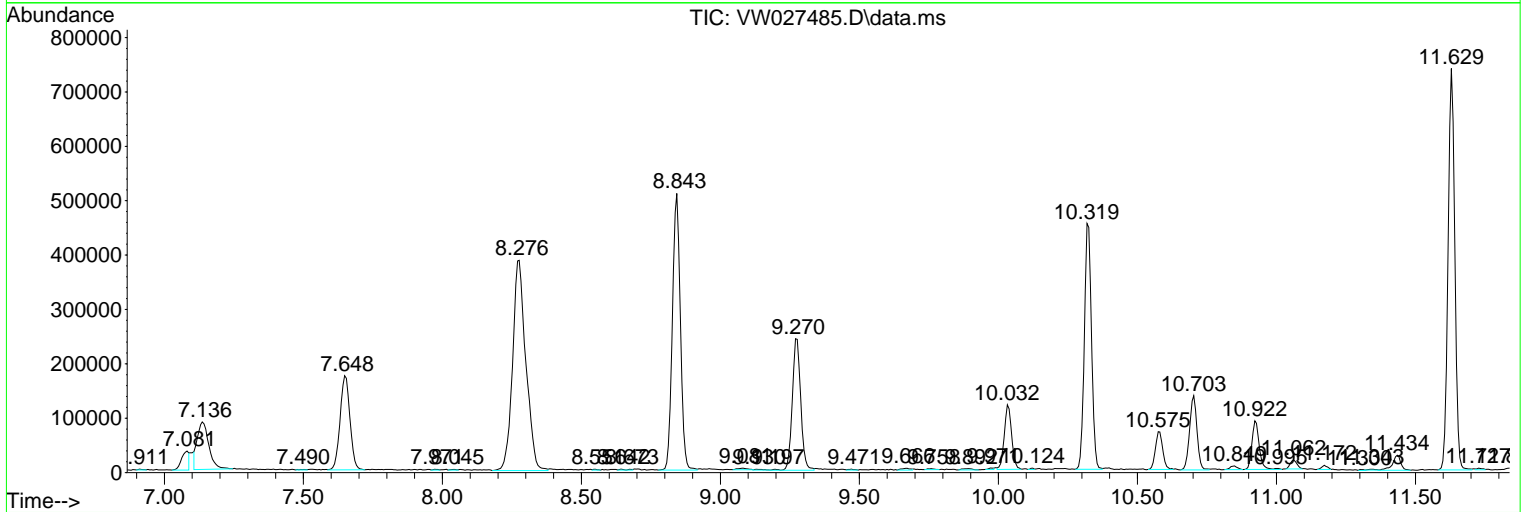
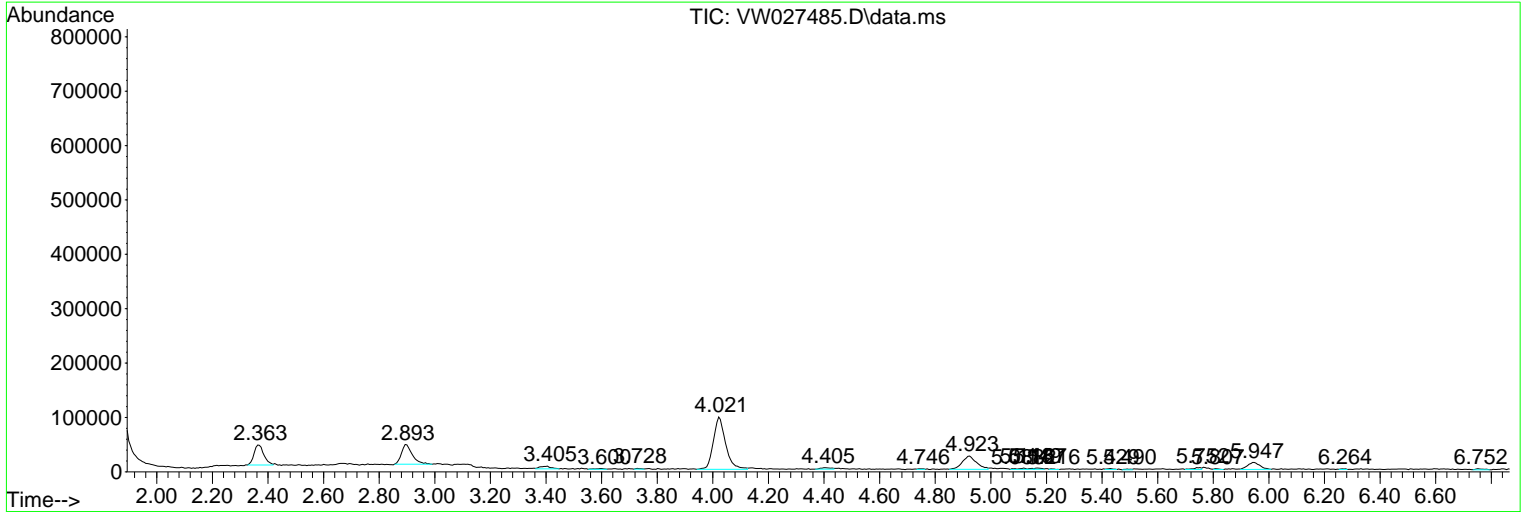
Sum of corrected areas: 9987982

Data Path : Z:\voasrv\HPCHEM1\MSVOA_W\Data\VW103123\
 Data File : VW027485.D
 Acq On : 31 Oct 2023 15:02
 Operator : SY/MD
 Sample : VIBLK561
 Misc : 5.00g/10mL/MSVOA_W/SOIL
 ALS Vial : 1 Sample Multiplier: 1

Instrument :
 MSVOA_W
ClientSampleId :
 VIBLK561

Quant Method : Z:\voasrv\HPCHEM1\MSVOA_W\Method\SFAMWLM101123SMA.M
 Quant Title : SFAM01.0

TIC Library : C:\Database\NIST20.L
 TIC Integration Parameters: LSCINT.P



Library Search Compound Report

Data Path : Z:\voasrv\HPCHEM1\MSVOA_W\Data\VW103123\
Data File : VW027485.D
Acq On : 31 Oct 2023 15:02
Operator : SY/MD
Sample : VIBLK561
Misc : 5.00g/10mL/MSVOA_W/SOIL
ALS Vial : 1 Sample Multiplier: 1

Instrument :
MSVOA_W
ClientSampleId :
VIBLK561

Quant Method : Z:\voasrv\HPCHEM1\MSVOA_W\Method\SFAMWLM101123SMA.M
Quant Title : SFAM01.0

TIC Library : C:\Database\NIST20.L
TIC Integration Parameters: LSCINT.P

No Library Search Compounds Detected

Data Path : Z:\voasrv\HPCHEM1\MSVOA_W\Data\VW103123\
Data File : VW027485.D
Acq On : 31 Oct 2023 15:02
Operator : SY/MD
Sample : VIBLK561
Misc : 5.00g/10mL/MSVOA_W/SOIL
ALS Vial : 1 Sample Multiplier: 1

Instrument :
MSVOA_W
ClientSampleId :
VIBLK561

Quant Method : Z:\voasrv\HPCHEM1\MSVOA_W\Method\SFAMWLM101123SMA.M
Quant Title : SFAM01.0

TIC Library : C:\Database\NIST0.L
TIC Integration Parameters: LSCINT.P

TIC Top Hit name	RT	EstConc	Units	Response	--Internal Standard--			
					#	RT	Resp	Conc
