

Data Path : Z:\voasrv\HPCHEM1\MSVOA_W\Data\VW103123\
 Data File : VW027486.D
 Acq On : 31 Oct 2023 15:26
 Operator : SY/MD
 Sample : 05174-03
 Misc : 4.76g/10mL/MSVOA_W/SOIL
 ALS Vial : 1 Sample Multiplier: 1

Instrument :
 MSVOA_W
 ClientSampleId :
 COAM6

Integration Parameters: LSCINT.P

Integrator: RTE
 Smoothing : OFF
 Sampling : 1
 Start Thrs : 0.2
 Stop Thrs : 0

Filtering: 5
 Min Area: 0 % of largest Peak
 Max Peaks: 100
 Peak Location: TOP

If leading or trailing edge < 100 prefer < Baseline drop else tangent >
 Peak separation: 5

Method : Z:\voasrv\HPCHEM1\MSVOA_W\Method\SFAMWLM101123SMA.M
 Title : SFAM01.0

Signal : TIC: VW027486.D\data.ms

peak #	R.T. min	first scan	max scan	last scan	PK TY	peak height	corr. area	corr. % max.	% of total
1	2.369	74	79	89	rVB	48923	112544	6.45%	0.948%
2	2.899	160	166	178	rBV	43619	118797	6.81%	1.000%
3	3.503	263	265	268	rBV4	1217	1460	0.08%	0.012%
4	3.887	326	328	330	rBV3	1152	1285	0.07%	0.011%
5	4.021	339	350	372	rBV	119524	379635	21.76%	3.197%
6	4.368	398	407	408	rBV8	1881	3452	0.20%	0.029%
7	4.557	437	438	441	rBV3	1588	1097	0.06%	0.009%
8	4.582	441	442	444	rBV2	959	721	0.04%	0.006%
9	4.661	453	455	456	rBV2	1414	1122	0.06%	0.009%
10	4.704	460	462	464	rBV3	846	722	0.04%	0.006%
11	4.783	473	475	477	rBV3	951	674	0.04%	0.006%
12	4.929	488	499	508	rBV3	14574	51209	2.94%	0.431%
13	5.356	566	569	571	rVB4	968	824	0.05%	0.007%
14	5.411	574	578	579	rBV4	1574	2537	0.15%	0.021%
15	5.466	586	587	589	rVV2	1492	720	0.04%	0.006%
16	5.496	591	592	594	rBV2	1021	694	0.04%	0.006%
17	5.515	594	595	598	rVB3	982	723	0.04%	0.006%
18	5.673	619	621	622	rBV2	1723	1222	0.07%	0.010%
19	5.722	627	629	632	rBV4	727	900	0.05%	0.008%
20	5.752	632	634	635	rBV2	1415	1092	0.06%	0.009%
21	5.880	653	655	657	rBV3	1234	1557	0.09%	0.013%
22	5.941	659	665	666	rBV5	4654	6860	0.39%	0.058%
23	6.088	687	689	691	rBV3	1009	819	0.05%	0.007%
24	6.124	693	695	698	rBV4	983	1099	0.06%	0.009%
25	6.155	698	700	702	rBV3	1112	969	0.06%	0.008%
26	6.277	718	720	722	rBV3	1371	1533	0.09%	0.013%
27	6.466	750	751	755	rVB4	1120	1007	0.06%	0.008%
28	6.496	755	756	758	rVB2	1292	622	0.04%	0.005%
29	6.533	760	762	764	rVB3	1164	877	0.05%	0.007%
30	6.569	766	768	771	rBV4	1272	1007	0.06%	0.008%
31	6.606	771	774	775	rBV3	848	949	0.05%	0.008%
32	6.728	792	794	795	rVB2	1218	667	0.04%	0.006%
33	6.752	795	798	800	rBV4	978	1182	0.07%	0.010%
34	6.789	803	804	806	rBV2	1077	823	0.05%	0.007%
35	6.862	814	816	818	rVB4	1668	1208	0.07%	0.010%
36	6.886	818	820	822	rBV3	1296	1031	0.06%	0.009%

Data Path : Z:\voasrv\HPCHEM1\MSVOA_W\Data\VW103123\
 Data File : VW027486.D
 Acq On : 31 Oct 2023 15:26
 Operator : SY/MD
 Sample : 05174-03
 Misc : 4.76g/10mL/MSVOA_W/SOIL
 ALS Vial : 1 Sample Multiplier: 1

Instrument :
 MSVOA_W
 ClientSampleId :
 COAM6

Integration Parameters: LSCINT.P

Integrator: RTE
 Smoothing : OFF
 Sampling : 1
 Start Thrs : 0.2
 Stop Thrs : 0

Filtering: 5
 Min Area: 0 % of largest Peak
 Max Peaks: 100
 Peak Location: TOP

If leading or trailing edge < 100 prefer < Baseline drop else tangent >
 Peak separation: 5

Method : Z:\voasrv\HPCHEM1\MSVOA_W\Method\SFAMWLM101123SMA.M
 Title : SFAM01.0

37	6.996	836	838	840	rVB4	1081	743	0.04%	0.006%
38	7.075	843	851	856	rBV	61331	166488	9.54%	1.402%
39	7.258	876	881	891	rVB	19845	48300	2.77%	0.407%
40	7.575	931	933	934	rVB2	1182	796	0.05%	0.007%
41	7.648	934	945	957	rBV	230270	560153	32.11%	4.717%
42	7.886	983	984	987	rBV3	1167	954	0.05%	0.008%
43	7.959	993	996	997	rBV3	1446	1478	0.08%	0.012%
44	8.118	1020	1022	1024	rVB3	942	683	0.04%	0.006%
45	8.276	1037	1048	1063	rBV2	451976	1356761	77.78%	11.426%
46	8.606	1100	1102	1104	rBV3	1244	1002	0.06%	0.008%
47	8.843	1132	1141	1151	rBV	656057	1307283	74.94%	11.009%
48	9.160	1191	1193	1195	rVB3	1413	1111	0.06%	0.009%
49	9.191	1195	1198	1199	rBV3	1094	1216	0.07%	0.010%
50	9.276	1204	1212	1222	rVV	318176	649667	37.24%	5.471%
51	9.666	1271	1276	1279	rBV7	3440	6883	0.39%	0.058%
52	10.032	1330	1336	1348	rVB	168230	304615	17.46%	2.565%
53	10.172	1357	1359	1360	rBV2	1362	703	0.04%	0.006%
54	10.191	1360	1362	1363	rBV2	1307	896	0.05%	0.008%
55	10.325	1376	1384	1391	rBV	582214	1045963	59.96%	8.809%
56	10.575	1419	1425	1434	rBV	105509	183979	10.55%	1.549%
57	10.703	1439	1446	1452	rBV3	23786	45111	2.59%	0.380%
58	10.922	1476	1482	1492	rBV	253134	423608	24.28%	3.567%
59	11.062	1501	1505	1512	rVB5	10092	19555	1.12%	0.165%
60	11.318	1546	1547	1549	rBV2	787	800	0.05%	0.007%
61	11.434	1560	1566	1572	rVB3	7421	14077	0.81%	0.119%
62	11.629	1590	1598	1608	rBV	966440	1628940	93.38%	13.718%
63	11.806	1625	1627	1628	rBV2	1633	1141	0.07%	0.010%
64	11.910	1642	1644	1645	rBV2	1130	952	0.05%	0.008%
65	11.952	1650	1651	1652	rBV	957	683	0.04%	0.006%
66	12.038	1662	1665	1667	rBV4	1033	1291	0.07%	0.011%
67	12.074	1669	1671	1673	rVB3	1302	997	0.06%	0.008%
68	12.123	1678	1679	1681	rVV2	1076	662	0.04%	0.006%
69	12.148	1681	1683	1685	rVV2	1305	1457	0.08%	0.012%
70	12.178	1685	1688	1695	rVB8	3431	6284	0.36%	0.053%
71	12.257	1699	1701	1704	rVB4	1069	1514	0.09%	0.013%
72	12.288	1704	1706	1710	rBV5	1225	1458	0.08%	0.012%
73	12.330	1710	1713	1714	rBV3	1415	1753	0.10%	0.015%
74	12.465	1730	1735	1740	rVB8	3125	6058	0.35%	0.051%
75	12.526	1740	1745	1747	rVB6	1692	1658	0.10%	0.014%
76	12.556	1747	1750	1751	rBV3	1073	1289	0.07%	0.011%

Data Path : Z:\voasrv\HPCHEM1\MSVOA_W\Data\VW103123\
 Data File : VW027486.D
 Acq On : 31 Oct 2023 15:26
 Operator : SY/MD
 Sample : 05174-03
 Misc : 4.76g/10mL/MSVOA_W/SOIL
 ALS Vial : 1 Sample Multiplier: 1

Instrument :
 MSVOA_W
 ClientSampleId :
 COAM6

Integration Parameters: LSCINT.P

Integrator: RTE
 Smoothing : OFF Filtering: 5
 Sampling : 1 Min Area: 0 % of largest Peak
 Start Thrs: 0.2 Max Peaks: 100
 Stop Thrs : 0 Peak Location: TOP

If leading or trailing edge < 100 prefer < Baseline drop else tangent >
 Peak separation: 5

Method : Z:\voasrv\HPCHEM1\MSVOA_W\Method\SFAMWLM101123SMA.M
 Title : SFAM01.0

77	12.605	1751	1758	1764	rBV	48190	84153	4.82%	0.709%
78	12.690	1765	1772	1780	rBV	292374	477893	27.40%	4.025%
79	12.843	1795	1797	1799	rBV3	1018	1120	0.06%	0.009%
80	12.867	1799	1801	1802	rVV2	1134	843	0.05%	0.007%
81	12.940	1805	1813	1817	rVB9	4192	10343	0.59%	0.087%
82	13.391	1881	1887	1888	rBV6	2348	3919	0.22%	0.033%
83	13.464	1896	1899	1902	rBV5	2994	5112	0.29%	0.043%
84	13.556	1907	1914	1923	rVV	1076400	1744332	100.00%	14.690%
85	13.849	1955	1962	1969	rBV	565400	930561	53.35%	7.837%
86	14.062	1992	1997	2005	rVB2	23010	38710	2.22%	0.326%
87	14.318	2036	2039	2044	rBV7	3267	5357	0.31%	0.045%
88	14.403	2051	2053	2055	rVB3	2141	1601	0.09%	0.013%
89	14.446	2055	2060	2062	rBV5	1458	2668	0.15%	0.022%
90	14.470	2062	2064	2067	rVV4	1464	1967	0.11%	0.017%
91	14.519	2070	2072	2075	rVB4	2168	1792	0.10%	0.015%
92	14.623	2085	2089	2091	rBV5	1950	3137	0.18%	0.026%
93	14.714	2101	2104	2109	rVB5	4704	6882	0.39%	0.058%
94	14.781	2113	2115	2116	rBV2	1374	920	0.05%	0.008%
95	15.360	2206	2210	2215	rBV7	3099	6738	0.39%	0.057%
96	15.427	2216	2221	2227	rVB2	22906	38515	2.21%	0.324%
97	15.659	2258	2259	2260	rBV	2210	1428	0.08%	0.012%
98	15.988	2311	2313	2314	rBV2	1511	786	0.05%	0.007%
99	16.628	2416	2418	2419	rBV2	1975	1352	0.08%	0.011%
100	16.744	2435	2437	2439	rBV3	1164	1522	0.09%	0.013%

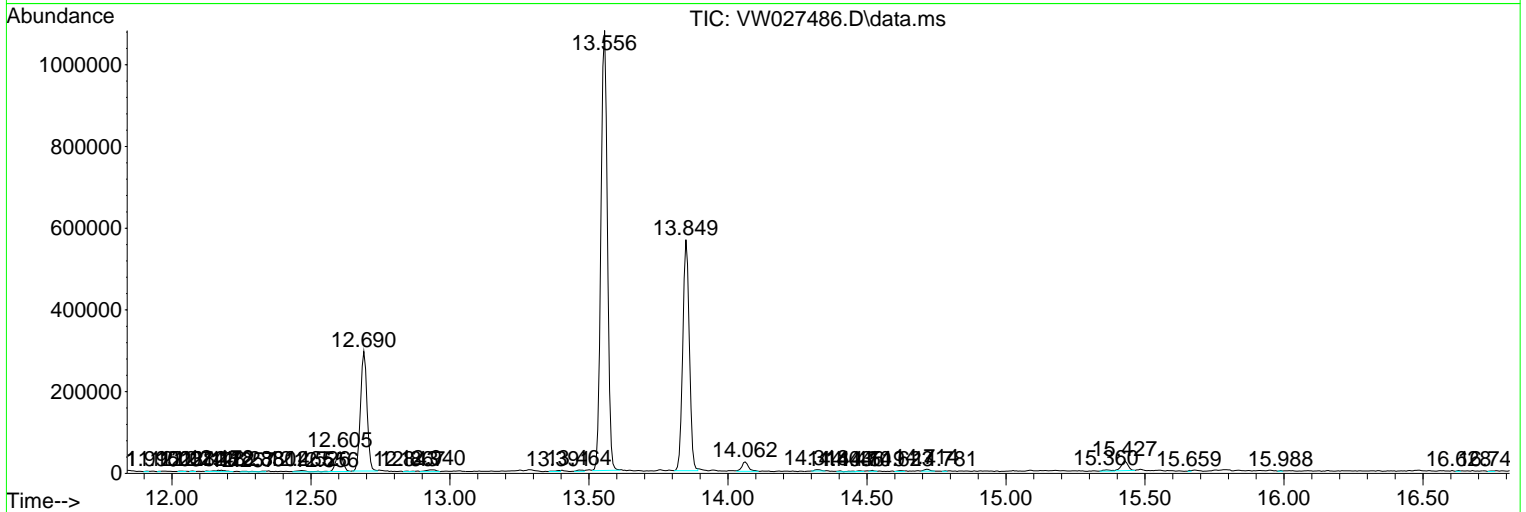
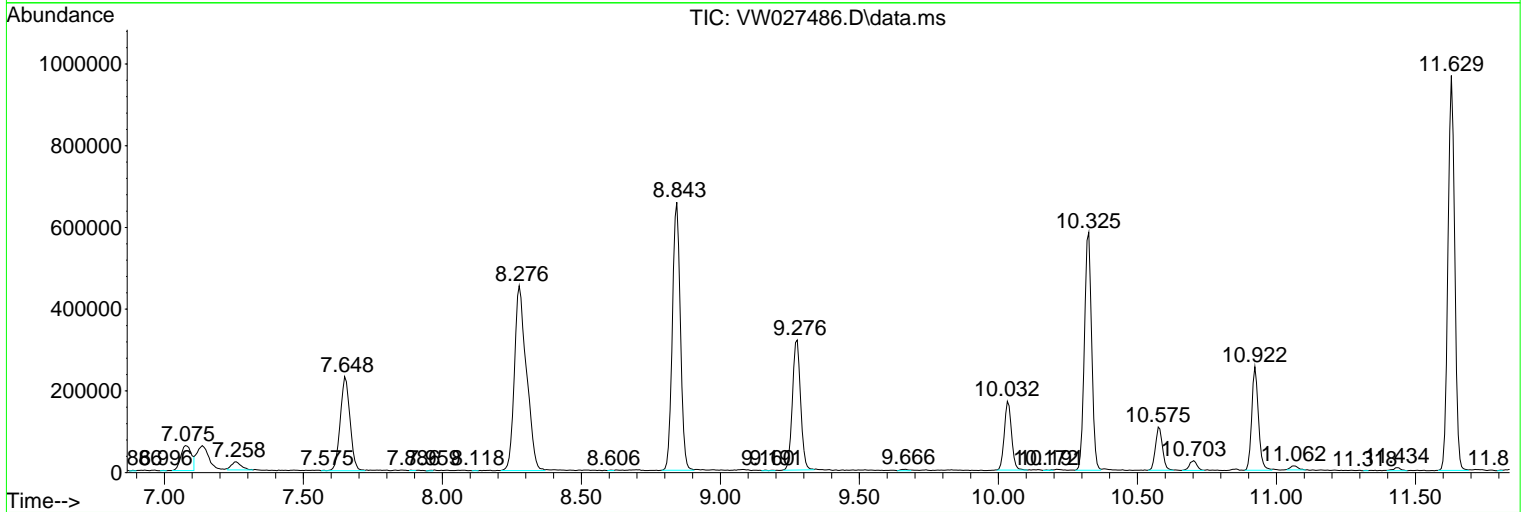
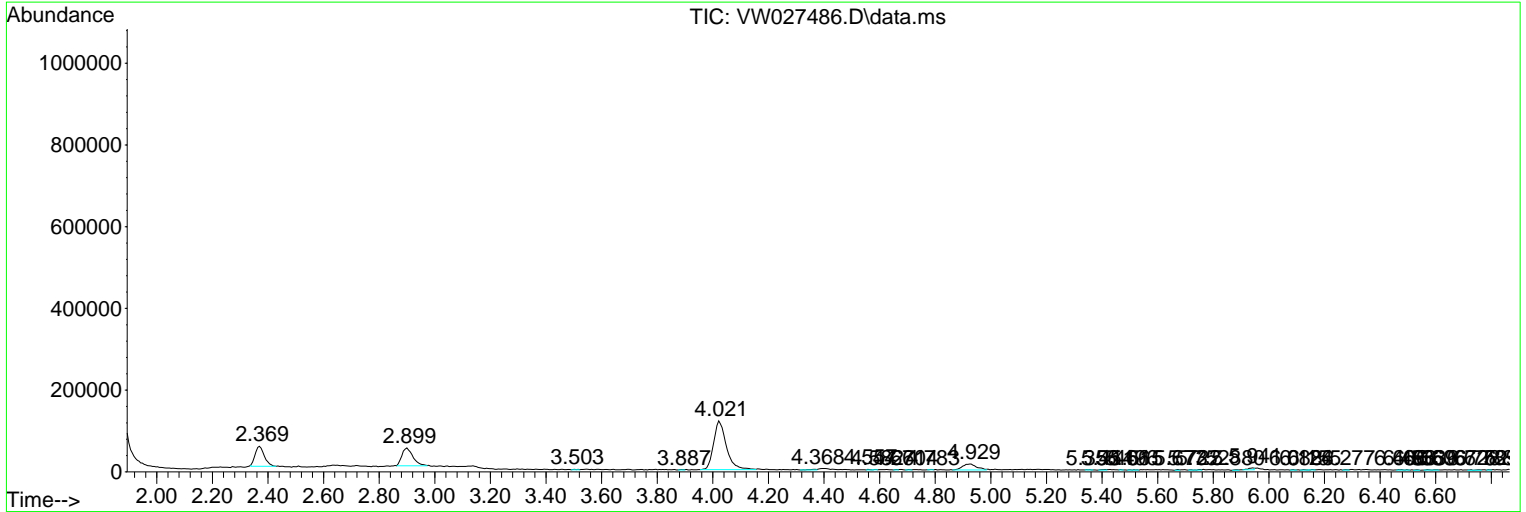
Sum of corrected areas: 11874253

Data Path : Z:\voasrv\HPCHEM1\MSVOA_W\Data\VW103123\
 Data File : VW027486.D
 Acq On : 31 Oct 2023 15:26
 Operator : SY/MD
 Sample : 05174-03
 Misc : 4.76g/10mL/MSVOA_W/SOIL
 ALS Vial : 1 Sample Multiplier: 1

Instrument :
 MSVOA_W
ClientSampleId :
 COAM6

Quant Method : Z:\voasrv\HPCHEM1\MSVOA_W\Method\SFAMWLM101123SMA.M
 Quant Title : SFAM01.0

TIC Library : C:\Database\NIST20.L
 TIC Integration Parameters: LSCINT.P



Library Search Compound Report

Data Path : Z:\voasrv\HPCHEM1\MSVOA_W\Data\VW103123\
Data File : VW027486.D
Acq On : 31 Oct 2023 15:26
Operator : SY/MD
Sample : 05174-03
Misc : 4.76g/10mL/MSVOA_W/SOIL
ALS Vial : 1 Sample Multiplier: 1

Instrument :
MSVOA_W
ClientSampleId :
C0AM6

Quant Method : Z:\voasrv\HPCHEM1\MSVOA_W\Method\SFAMWLM101123SMA.M
Quant Title : SFAM01.0

TIC Library : C:\Database\NIST20.L
TIC Integration Parameters: LSCINT.P

No Library Search Compounds Detected

Data Path : Z:\voasrv\HPCHEM1\MSVOA_W\Data\VW103123\
Data File : VW027486.D
Acq On : 31 Oct 2023 15:26
Operator : SY/MD
Sample : 05174-03
Misc : 4.76g/10mL/MSVOA_W/SOIL
ALS Vial : 1 Sample Multiplier: 1

Instrument :
MSVOA_W
ClientSampleId :
C0AM6

Quant Method : Z:\voasrv\HPCHEM1\MSVOA_W\Method\SFAMWLM101123SMA.M
Quant Title : SFAM01.0

TIC Library : C:\Database\NIST0.L
TIC Integration Parameters: LSCINT.P

TIC Top Hit name	RT	EstConc	Units	Response	--Internal Standard--		
					#	RT	Resp Conc
