

Data Path : Z:\voasrv\HPCHEM1\MSVOA_W\Data\VW103124\
 Data File : VW030858.D
 Acq On : 31 Oct 2024 14:01
 Operator : SY/MD
 Sample : P4582-09
 Misc : 4.91g/10mL/MSVOA_W/SOIL/A
 ALS Vial : 12 Sample Multiplier: 1

Instrument :
 MSVOA_W
 ClientSampleId :
 A4EC0

Integration Parameters: LSCINT.P

Integrator: RTE
 Smoothing : OFF
 Sampling : 1
 Start Thrs: 0.2
 Stop Thrs : 0

Filtering: 5
 Min Area: 0 % of largest Peak
 Max Peaks: 100
 Peak Location: TOP

If leading or trailing edge < 100 prefer < Baseline drop else tangent >
 Peak separation: 5

Method : Z:\voasrv\HPCHEM1\MSVOA_W\Method\SFAMWLM100924SMA.M
 Title : SFAM01.0

Signal : TIC: VW030858.D\data.ms

peak #	R.T. min	first scan	max scan	last scan	PK TY	peak height	corr. area	corr. % max.	% of total
1	2.369	72	79	93	rBV	117136	287461	16.53%	2.265%
2	2.899	159	166	182	rBV	89525	264402	15.20%	2.083%
3	4.021	340	350	372	rBV	193060	589735	33.91%	4.647%
4	5.350	564	568	570	rBV4	765	1315	0.08%	0.010%
5	5.393	573	575	576	rBV2	813	731	0.04%	0.006%
6	5.521	594	596	597	rBV2	697	360	0.02%	0.003%
7	5.661	617	619	620	rBV2	802	439	0.03%	0.003%
8	5.698	623	625	627	rBV	669	590	0.03%	0.005%
9	5.795	639	641	643	rBV	624	660	0.04%	0.005%
10	5.874	652	654	655	rBV2	447	209	0.01%	0.002%
11	6.338	729	730	731	rVB	424	155	0.01%	0.001%
12	6.356	731	733	734	rBV	339	212	0.01%	0.002%
13	6.399	738	740	742	rVB3	581	324	0.02%	0.003%
14	6.423	742	744	747	rBV3	693	989	0.06%	0.008%
15	6.533	760	762	763	rBV	522	374	0.02%	0.003%
16	6.758	798	799	802	rVB2	464	309	0.02%	0.002%
17	6.789	802	804	805	rBV2	390	353	0.02%	0.003%
18	6.899	820	822	823	rBV	598	334	0.02%	0.003%
19	6.917	823	825	828	rVB2	562	465	0.03%	0.004%
20	7.081	844	852	860	rBV	25956	77728	4.47%	0.612%
21	7.405	904	905	908	rVB3	767	546	0.03%	0.004%
22	7.441	909	911	912	rVV2	812	481	0.03%	0.004%
23	7.490	916	919	923	rVB4	773	960	0.06%	0.008%
24	7.545	926	928	932	rBV4	529	629	0.04%	0.005%
25	7.648	934	945	959	rBV	358056	848503	48.79%	6.686%
26	7.764	963	964	965	rVB	527	195	0.01%	0.002%
27	7.831	973	975	976	rBV2	371	214	0.01%	0.002%
28	8.008	1001	1004	1005	rBV3	334	353	0.02%	0.003%
29	8.045	1009	1010	1013	rVB2	649	510	0.03%	0.004%
30	8.142	1024	1026	1029	rBV3	584	793	0.05%	0.006%
31	8.167	1029	1030	1033	rBV3	572	641	0.04%	0.005%
32	8.276	1036	1048	1071	rBV2	611565	1738919	100.00%	13.701%
33	8.776	1127	1130	1131	rBV3	474	438	0.03%	0.003%
34	8.843	1131	1141	1153	rBV	621963	1210151	69.59%	9.535%
35	9.142	1188	1190	1192	rBV3	769	661	0.04%	0.005%
36	9.270	1203	1211	1223	rBV	408245	841640	48.40%	6.631%

Data Path : Z:\voasrv\HPCHEM1\MSVOA_W\Data\VW103124\
 Data File : VW030858.D
 Acq On : 31 Oct 2024 14:01
 Operator : SY/MD
 Sample : P4582-09
 Misc : 4.91g/10mL/MSVOA_W/SOIL/A
 ALS Vial : 12 Sample Multiplier: 1

Instrument :
 MSVOA_W
 ClientSampleId :
 A4EC0

Integration Parameters: LSCINT.P

Integrator: RTE
 Smoothing : OFF
 Sampling : 1
 Start Thrs: 0.2
 Stop Thrs : 0

Filtering: 5
 Min Area: 0 % of largest Peak
 Max Peaks: 100
 Peak Location: TOP

If leading or trailing edge < 100 prefer < Baseline drop else tangent >
 Peak separation: 5

Method : Z:\voasrv\HPCHEM1\MSVOA_W\Method\SFAMWLM100924SMA.M
 Title : SFAM01.0

37	9.563	1254	1259	1261	rBV2	754	841	0.05%	0.007%
38	9.819	1299	1301	1302	rBV2	217	133	0.01%	0.001%
39	9.867	1306	1309	1310	rBV3	880	873	0.05%	0.007%
40	9.928	1318	1319	1321	rVB2	549	312	0.02%	0.002%
41	9.959	1321	1324	1328	rBV5	594	1031	0.06%	0.008%
42	10.032	1328	1336	1349	rBV	194129	366411	21.07%	2.887%
43	10.325	1375	1384	1396	rBV	863791	1547468	88.99%	12.193%
44	10.575	1418	1425	1436	rBV	116695	208881	12.01%	1.646%
45	10.697	1441	1445	1451	rVB2	6812	11948	0.69%	0.094%
46	10.922	1476	1482	1494	rBV	112553	208398	11.98%	1.642%
47	11.629	1590	1598	1608	rBV	894152	1479616	85.09%	11.658%
48	11.831	1627	1631	1636	rBV6	1587	3065	0.18%	0.024%
49	12.013	1658	1661	1662	rBV3	627	576	0.03%	0.005%
50	12.038	1662	1665	1666	rBV3	761	856	0.05%	0.007%
51	12.245	1698	1699	1700	rVB3	622	228	0.01%	0.002%
52	12.349	1714	1716	1718	rBV3	602	442	0.03%	0.003%
53	12.398	1721	1724	1725	rBV3	465	400	0.02%	0.003%
54	12.501	1740	1741	1742	rBB	412	151	0.01%	0.001%
55	12.519	1742	1744	1747	rVB2	830	611	0.04%	0.005%
56	12.599	1750	1757	1764	rBV3	7330	13854	0.80%	0.109%
57	12.690	1764	1772	1781	rBV	264931	438393	25.21%	3.454%
58	12.830	1794	1795	1797	rBV2	413	269	0.02%	0.002%
59	12.855	1797	1799	1802	rBV3	493	632	0.04%	0.005%
60	12.891	1802	1805	1806	rBV3	370	405	0.02%	0.003%
61	12.922	1808	1810	1811	rBV2	691	406	0.02%	0.003%
62	13.074	1833	1835	1836	rVB2	733	309	0.02%	0.002%
63	13.184	1850	1853	1858	rVB2	5932	9152	0.53%	0.072%
64	13.300	1867	1872	1876	rBV3	3227	5460	0.31%	0.043%
65	13.403	1880	1889	1894	rBV2	11179	22281	1.28%	0.176%
66	13.556	1907	1914	1920	rBV	873755	1328182	76.38%	10.465%
67	13.848	1955	1962	1974	rBV	716965	1160270	66.72%	9.142%
68	14.214	2020	2022	2024	rBV3	493	506	0.03%	0.004%
69	14.769	2111	2113	2115	rBV3	533	426	0.02%	0.003%
70	14.830	2120	2123	2124	rBV3	743	793	0.05%	0.006%
71	14.958	2142	2144	2147	rBV4	386	552	0.03%	0.004%
72	14.989	2147	2149	2150	rVB2	586	317	0.02%	0.002%
73	15.068	2161	2162	2164	rVB2	515	224	0.01%	0.002%
74	15.123	2170	2171	2176	rVB4	1278	1036	0.06%	0.008%
75	15.427	2219	2221	2222	rVB	597	255	0.01%	0.002%
76	15.476	2227	2229	2232	rVV3	1435	1525	0.09%	0.012%

Data Path : Z:\voasrv\HPCHEM1\MSVOA_W\Data\VW103124\
Data File : VW030858.D
Acq On : 31 Oct 2024 14:01
Operator : SY/MD
Sample : P4582-09
Misc : 4.91g/10mL/MSVOA_W/SOIL/A
ALS Vial : 12 Sample Multiplier: 1

Instrument :
MSVOA_W
ClientSampleId :
A4EC0

Integration Parameters: LSCINT.P
Integrator: RTE
Smoothing : OFF Filtering: 5
Sampling : 1 Min Area: 0 % of largest Peak
Start Thrs: 0.2 Max Peaks: 100
Stop Thrs : 0 Peak Location: TOP

If leading or trailing edge < 100 prefer < Baseline drop else tangent >
Peak separation: 5

Method : Z:\voasrv\HPCHEM1\MSVOA_W\Method\SFAMWLM100924SMA.M
Title : SFAM01.0

77	15.519	2235	2236	2238	rBV2	485	318	0.02%	0.003%
78	15.830	2285	2287	2288	rBV2	665	387	0.02%	0.003%
79	16.342	2369	2371	2372	rBV2	609	373	0.02%	0.003%
80	16.397	2378	2380	2381	rVB	726	317	0.02%	0.002%

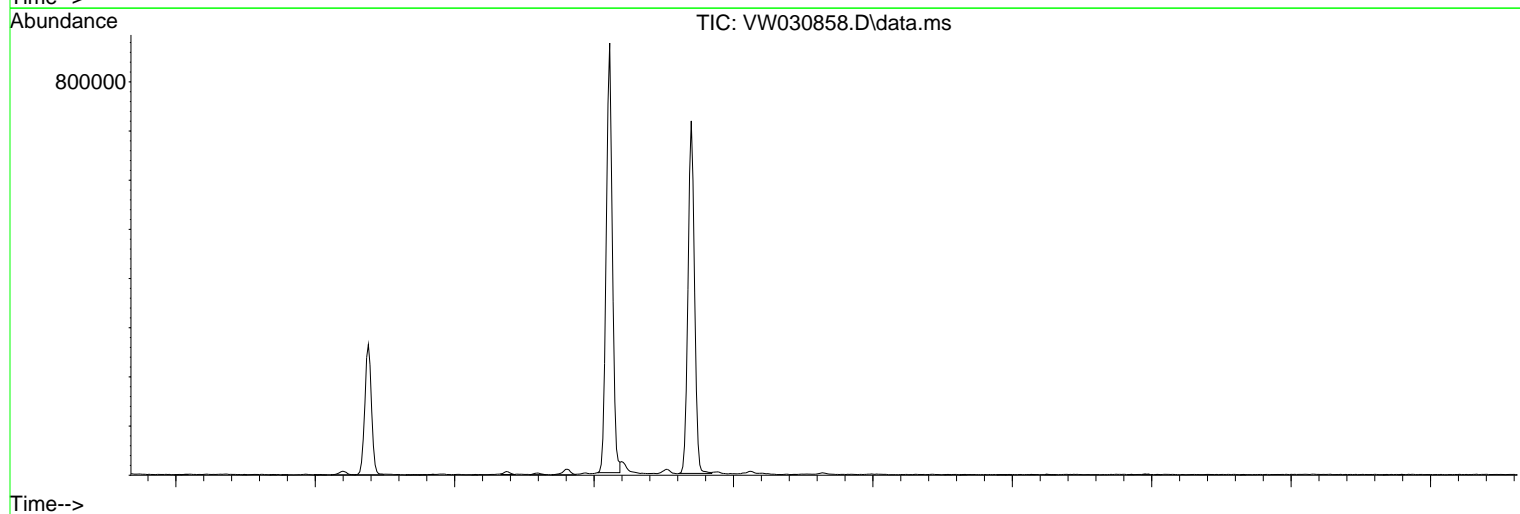
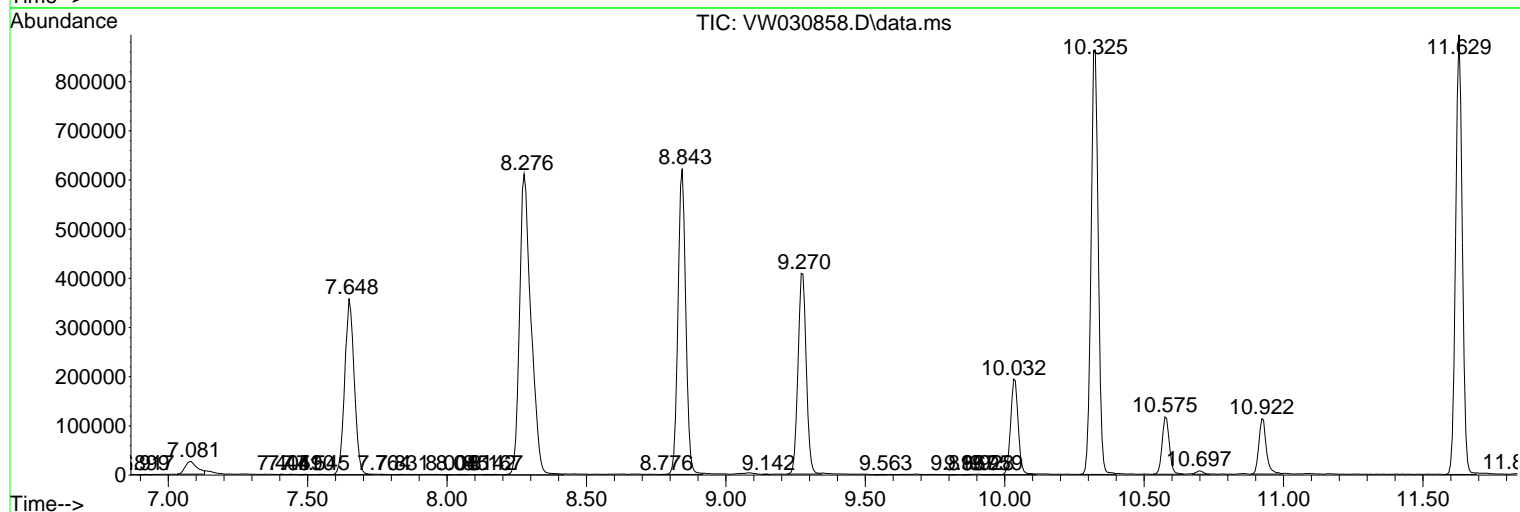
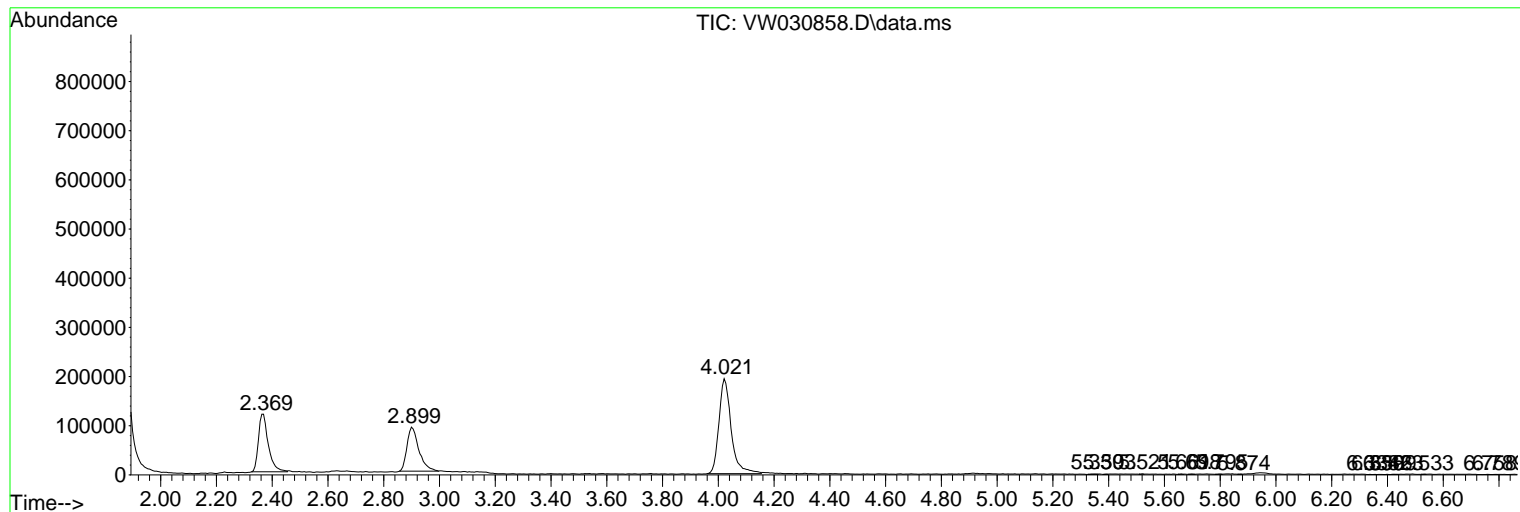
Sum of corrected areas: 12691662

Data Path : Z:\voasrv\HPCHEM1\MSVOA_W\Data\VW103124\
 Data File : VW030858.D
 Acq On : 31 Oct 2024 14:01
 Operator : SY/MD
 Sample : P4582-09
 Misc : 4.91g/10mL/MSVOA_W/SOIL/A
 ALS Vial : 12 Sample Multiplier: 1

Instrument :
 MSVOA_W
 ClientSampleId :
 A4EC0

Quant Method : Z:\voasrv\HPCHEM1\MSVOA_W\Method\SFAMWLM100924SMA.M
 Quant Title : SFAM01.0

TIC Library : C:\Database\NIST20.L
 TIC Integration Parameters: LSCINT.P



Library Search Compound Report

Data Path : Z:\voasrv\HPCHEM1\MSVOA_W\Data\VW103124\
Data File : VW030858.D
Acq On : 31 Oct 2024 14:01
Operator : SY/MD
Sample : P4582-09
Misc : 4.91g/10mL/MSVOA_W/SOIL/A
ALS Vial : 12 Sample Multiplier: 1

Instrument :
MSVOA_W
ClientSampleId :
A4EC0

Quant Method : Z:\voasrv\HPCHEM1\MSVOA_W\Method\SFAMWLM100924SMA.M
Quant Title : SFAM01.0

TIC Library : C:\Database\NIST20.L
TIC Integration Parameters: LSCINT.P

No Library Search Compounds Detected

Data Path : Z:\voasrv\HPCHEM1\MSVOA_W\Data\VW103124\
Data File : VW030858.D
Acq On : 31 Oct 2024 14:01
Operator : SY/MD
Sample : P4582-09
Misc : 4.91g/10mL/MSVOA_W/SOIL/A
ALS Vial : 12 Sample Multiplier: 1

Instrument :
MSVOA_W
ClientSampleId :
A4EC0

Quant Method : Z:\voasrv\HPCHEM1\MSVOA_W\Method\SFAMWLM100924SMA.M
Quant Title : SFAM01.0

TIC Library : C:\Database\NIST20.L
TIC Integration Parameters: LSCINT.P

TIC Top Hit name	RT	EstConc	Units	Response	#	RT	Resp	Conc
------------------	----	---------	-------	----------	---	----	------	------

-----|